

Fig. S1

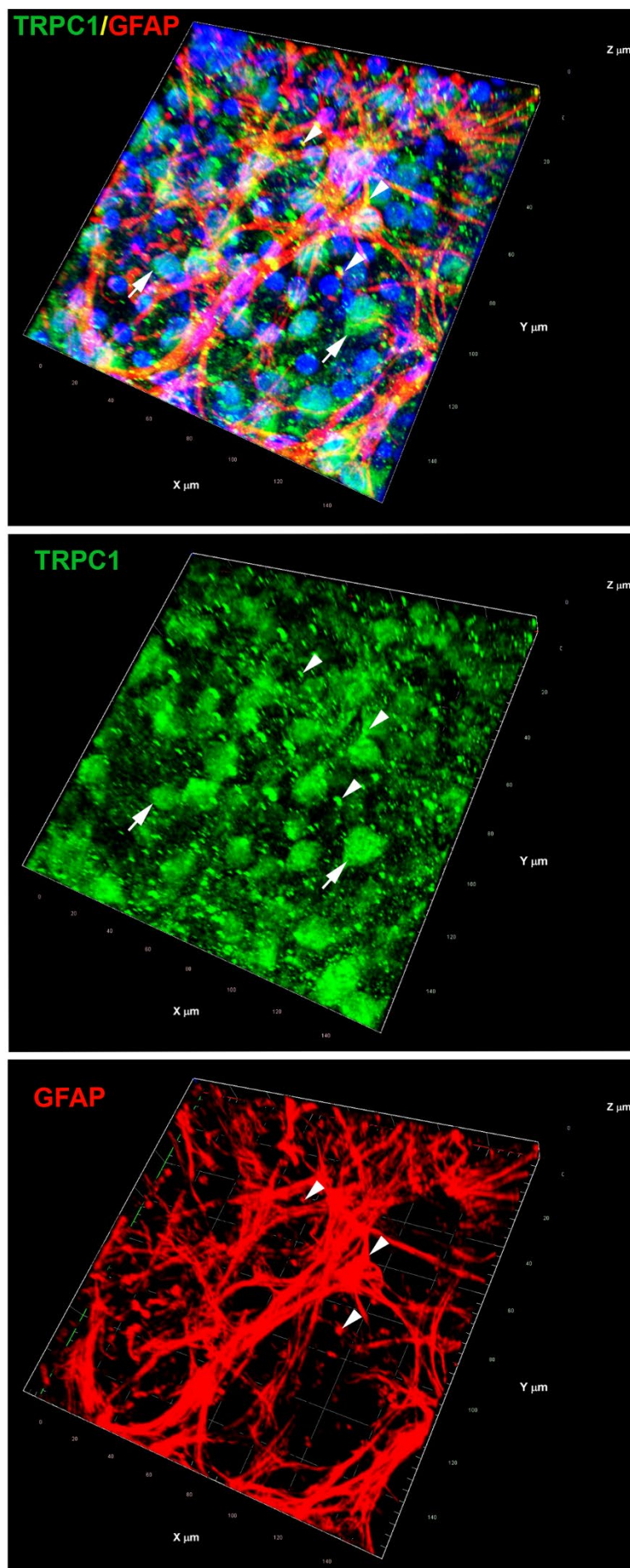


Figure S1. Immunolocalization of TRPC1 (green) and GFAP (red) in a P23H-P240 rat retina. 3D composition reconstructed from 10 scanned images taken from a whole mounted retina. Overlap in yellow. Overlap in glial cells (arrowheads) and localization of TRPC1 in ganglion cells (arrows).

Fig. S2

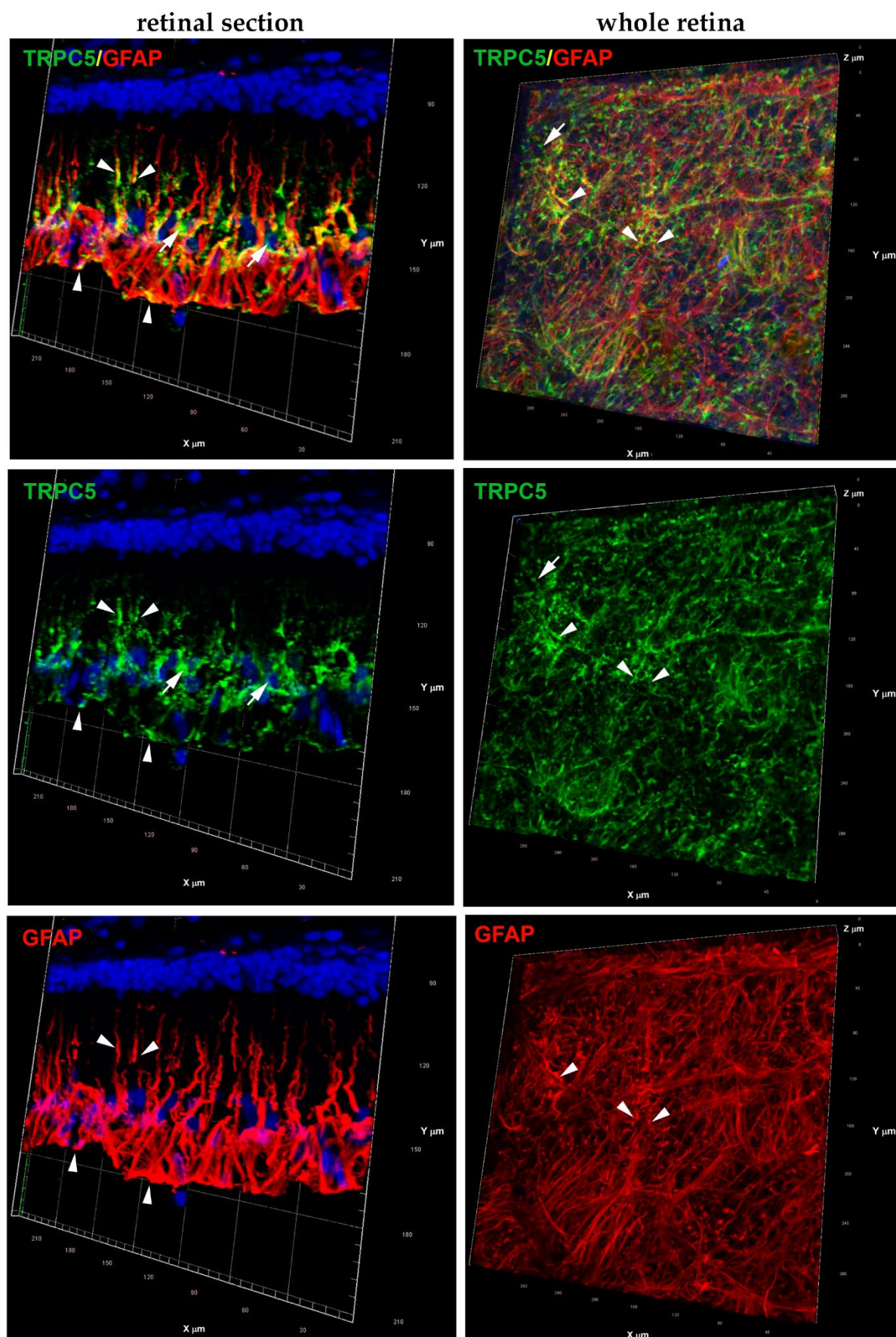


Figure S2. Immunolocalization of TRPC5 (green) and GFAP (red) in a P23H-P240 rat retina. 3D composition reconstructed from 10 scanned images taken from a retinal section (column left) and from a whole mounted retina (column right). Overlap in yellow. Overlap in glial cells (arrowheads) and localization of TRPC5 in ganglion cells (arrows).

Fig. S3

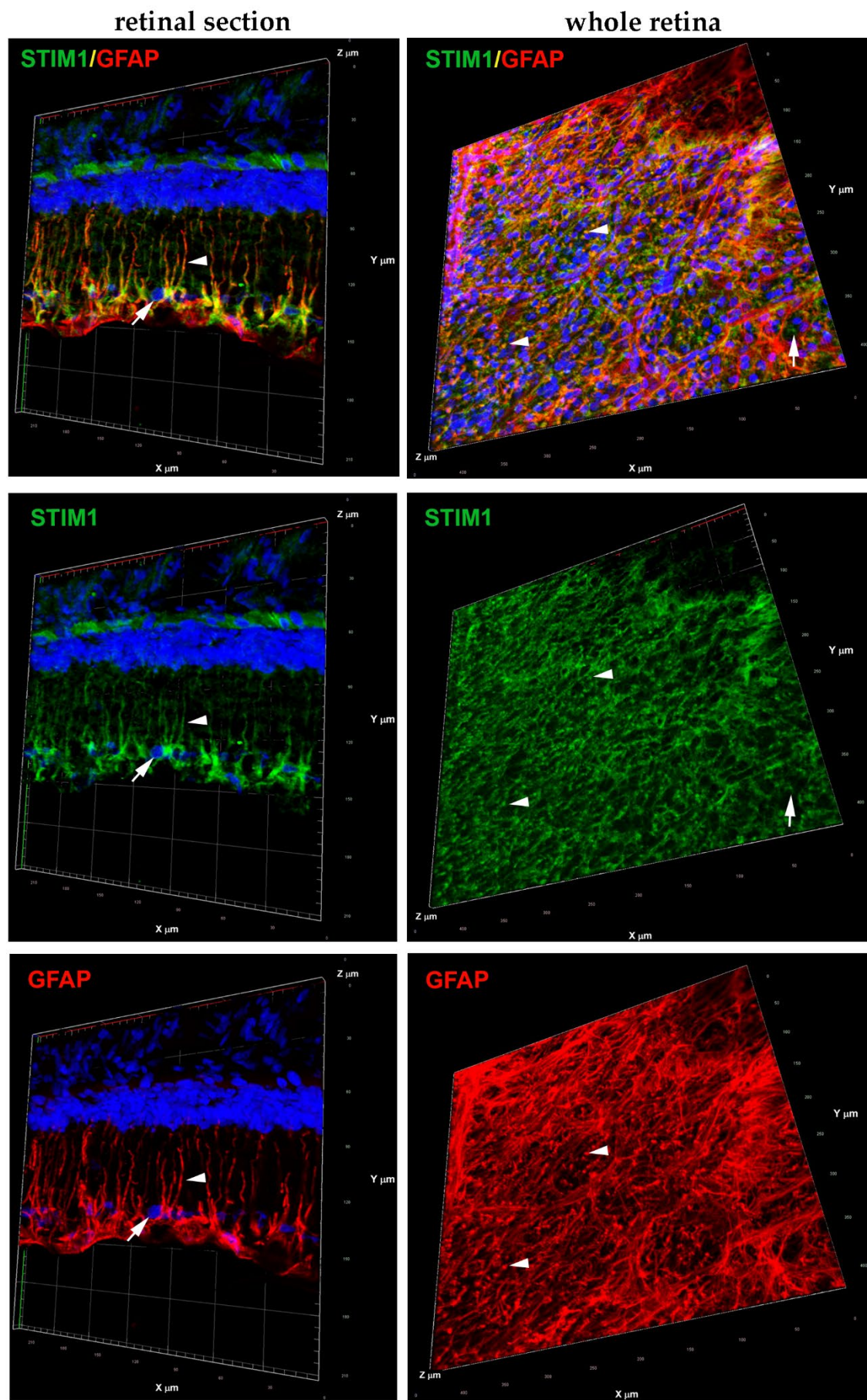


Figure S2. Immunolocalization of STIM1 (green) and GFAP (red) in a P23H-P240 rat retina. 3D composition reconstructed from 10 scanned images taken from a retinal section (column left) and from a whole mounted retina (column right). Overlap in yellow. Overlap in glial cells (arrowheads) and localization of TRPC5 in ganglion cells (arrows).