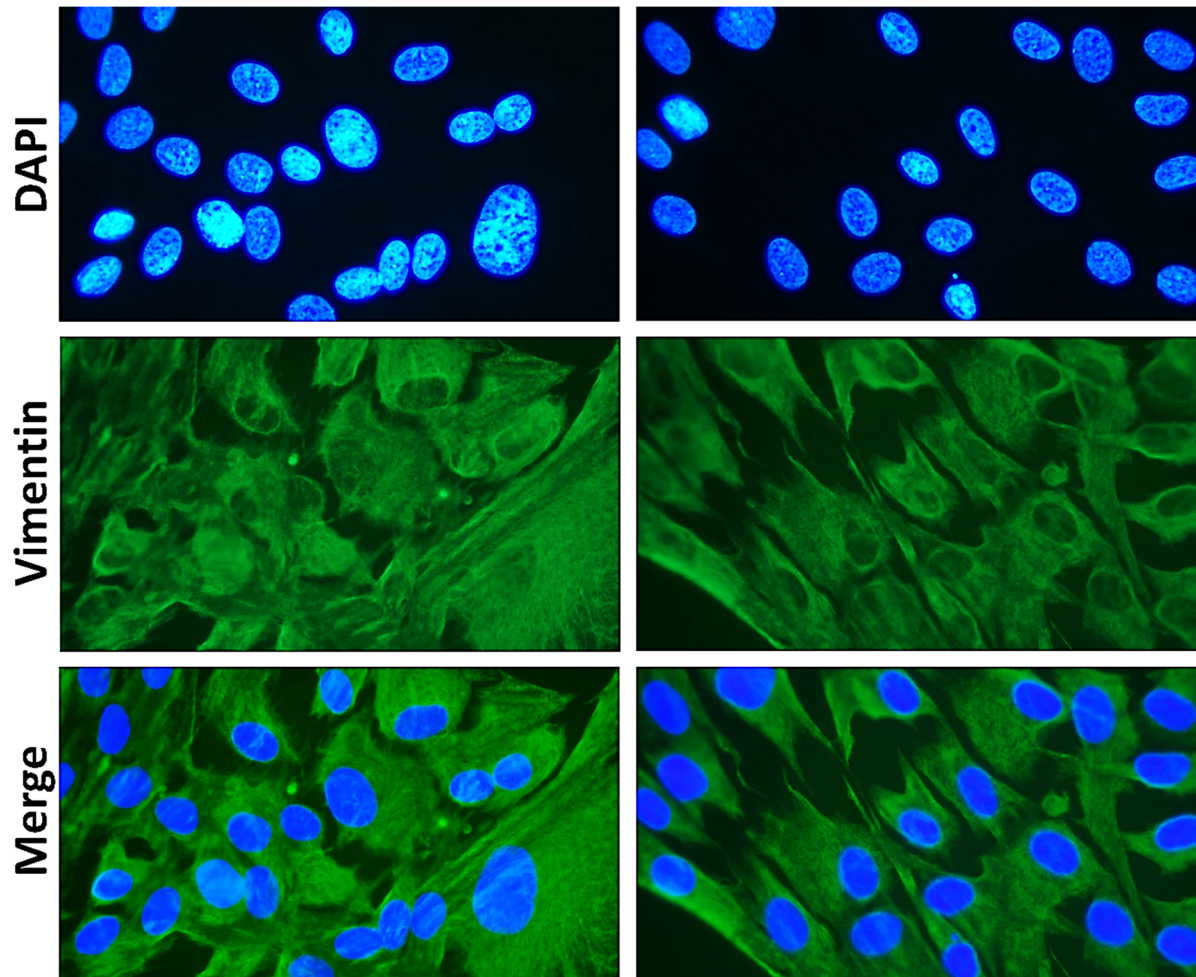


# Supplementary material

for

## Herpes Simplex Virus Type 1 Infection of Human Periodontal Ligament



**Figure S1.** Immunofluorescent staining of cultured cells for vimentin, confirming their identity as fibroblasts. Cell nuclei were counterstained with DAPI. Representative micrographs from duplicate experiments are shown. Magnification,  $\times 100$ .

**Table S1.** Statistical significance and p-values of comparisons determined using repeated measures ANOVA to delineate the viral titer-dependent (MOI) response to HSV-1 infection in PDL-cells.

	Multiple comparisons	Significance	P-values
ICP0 1h	MOI 0 vs. MOI 10	ns	0.5196
	MOI 0 vs. MOI 100	**	0.0092
	MOI 0 vs. MOI 1 000	****	<0.0001
	MOI 0 vs. MOI 10 000	****	<0.0001
	MOI 0 vs. MOI 40 000	****	<0.0001
	MOI 10 vs. MOI 100	ns	0.6975
	MOI 10 vs. MOI 1 000	**	0.0026
	MOI 10 vs. MOI 10 000	****	<0.0001
	MOI 10 vs. MOI 40 000	****	<0.0001
	MOI 100 vs. MOI 1 000	ns	0.2197
	MOI 100 vs. MOI 10 000	***	0.0004
	MOI 100 vs. MOI 40 000	****	<0.0001
	MOI 1 000 vs. MOI 10 000	ns	0.1945
	MOI 1 000 vs. MOI 40 000	**	0.0024
	MOI 10 000 vs. MOI 40 000	ns	0.7190
ICP0 6h	MOI 0 vs. MOI 10	***	0.0005
	MOI 0 vs. MOI 100	****	<0.0001
	MOI 0 vs. MOI 1 000	****	<0.0001
	MOI 0 vs. MOI 10 000	****	<0.0001
	MOI 0 vs. MOI 40 000	****	<0.0001
	MOI 10 vs. MOI 100	ns	0.6463
	MOI 10 vs. MOI 1 000	****	<0.0001
	MOI 10 vs. MOI 10 000	****	<0.0001
	MOI 10 vs. MOI 40 000	****	<0.0001
	MOI 100 vs. MOI 1 000	***	0.0007
	MOI 100 vs. MOI 10 000	***	0.0001
	MOI 100 vs. MOI 40 000	****	<0.0001
	MOI 1 000 vs. MOI 10 000	ns	>0.9999
	MOI 1 000 vs. MOI 40 000	ns	0.7843
	MOI 10 000 vs. MOI 40 000	ns	0.9973
ICP4 1h	MOI 0 vs. MOI 10	ns	>0.9999
	MOI 0 vs. MOI 100	ns	>0.9999
	MOI 0 vs. MOI 1 000	ns	0.5215

	MOI 0 vs. MOI 10 000	**	0.0034
	MOI 0 vs. MOI 40 000	***	0.0001
	MOI 10 vs. MOI 100	ns	>0.9999
	MOI 10 vs. MOI 1 000	ns	0.4784
	MOI 10 vs. MOI 10 000	**	0.0030
	MOI 10 vs. MOI 40 000	****	<0.0001
	MOI 100 vs. MOI 1 000	ns	0.6581
	MOI 100 vs. MOI 10 000	**	0.0055
	MOI 100 vs. MOI 40 000	***	0.0002
	MOI 1 000 vs. MOI 10 000	ns	0.4088
	MOI 1 000 vs. MOI 40 000	*	0.0207
	MOI 10 000 vs. MOI 40 000	ns	0.9521
ICP4 6h	MOI 0 vs. MOI 10	ns	0.6951
	MOI 0 vs. MOI 100	*	0.0437
	MOI 0 vs. MOI 1 000	****	<0.0001
	MOI 0 vs. MOI 10 000	****	<0.0001
	MOI 0 vs. MOI 40 000	****	<0.0001
	MOI 10 vs. MOI 100	ns	0.9264
	MOI 10 vs. MOI 1 000	**	0.0011
	MOI 10 vs. MOI 10 000	***	0.0003
	MOI 10 vs. MOI 40 000	****	<0.0001
	MOI 100 vs. MOI 1 000	*	0.0419
	MOI 100 vs. MOI 10 000	*	0.0129
	MOI 100 vs. MOI 40 000	**	0.0016
	MOI 1 000 vs. MOI 10 000	ns	>0.9999
	MOI 1 000 vs. MOI 40 000	ns	0.9681
	MOI 10 000 vs. MOI 40 000	ns	0.9997
ICP8 1h	MOI 0 vs. MOI 10	ns	>0.9999
	MOI 0 vs. MOI 100	ns	0.8997
	MOI 0 vs. MOI 1 000	***	0.0008
	MOI 0 vs. MOI 10 000	****	<0.0001
	MOI 0 vs. MOI 40 000	****	<0.0001
	MOI 10 vs. MOI 100	ns	0.9948
	MOI 10 vs. MOI 1 000	**	0.0025
	MOI 10 vs. MOI 10 000	****	<0.0001
	MOI 10 vs. MOI 40 000	****	<0.0001
	MOI 100 vs. MOI 1 000	*	0.0361
	MOI 100 vs. MOI 10 000	****	<0.0001

	MOI 100 vs. MOI 40 000	****	<0.0001
	MOI 1 000 vs. MOI 10 000	**	0.0023
	MOI 1 000 vs. MOI 40 000	****	<0.0001
	MOI 10 000 vs. MOI 40 000	ns	0.3484
ICP8 6h	MOI 0 vs. MOI 10	****	<0.0001
	MOI 0 vs. MOI 100	****	<0.0001
	MOI 0 vs. MOI 1 000	****	<0.0001
	MOI 0 vs. MOI 10 000	****	<0.0001
	MOI 0 vs. MOI 40 000	****	<0.0001
	MOI 10 vs. MOI 100	ns	0.3072
	MOI 10 vs. MOI 1 000	****	<0.0001
	MOI 10 vs. MOI 10 000	****	<0.0001
	MOI 10 vs. MOI 40 000	****	<0.0001
	MOI 100 vs. MOI 1 000	**	0.0047
	MOI 100 vs. MOI 10 000	****	<0.0001
	MOI 100 vs. MOI 40 000	****	<0.0001
	MOI 1 000 vs. MOI 10 000	*	0.0222
	MOI 1 000 vs. MOI 40 000	**	0.0018
	MOI 10 000 vs. MOI 40 000	ns	0.9971