

# Hyperthermia intensifies gambogic acid and synthetic xanthones' antimalignancy properties.

Jakub Rech <sup>1,\*</sup>, Dorota Żelaszczyk <sup>2</sup>, Henryk Marona <sup>2</sup>, Agnieszka Gunia-Krzyżak<sup>2</sup>,  
Paweł Żmudzki<sup>3</sup> and Ilona Bednarek <sup>1</sup>

<sup>1</sup> Department of Biotechnology and Genetic Engineering, Faculty of Pharmaceutical Sciences in Sosnowiec, Medical University of Silesia, 40-055 Katowice, Poland; jrech@sum.edu.pl (J.R), ibednarek@sum.edu.pl (I.B.)

<sup>2</sup> Department of Bioorganic Chemistry, Chair of Organic Chemistry, Faculty of Pharmacy, Jagiellonian University Medical College, 30-688 Krakow, Poland; dorota.zelaszczyk@uj.edu.pl (D.Z.); henryk.marona@uj.edu.pl (H.M.); agnieszka.gunia@uj.edu.pl (A.G-K)

<sup>3</sup> Department of Pharmaceutical Chemistry, Faculty of Pharmacy, Jagiellonian University Medical College, Krakow, 30-688 Krakow, Poland; pawel.zmudzki@uj.edu.pl (P.Z.)

\* Correspondence: jrech@sum.edu.pl

Intermediate products

## Compound 1

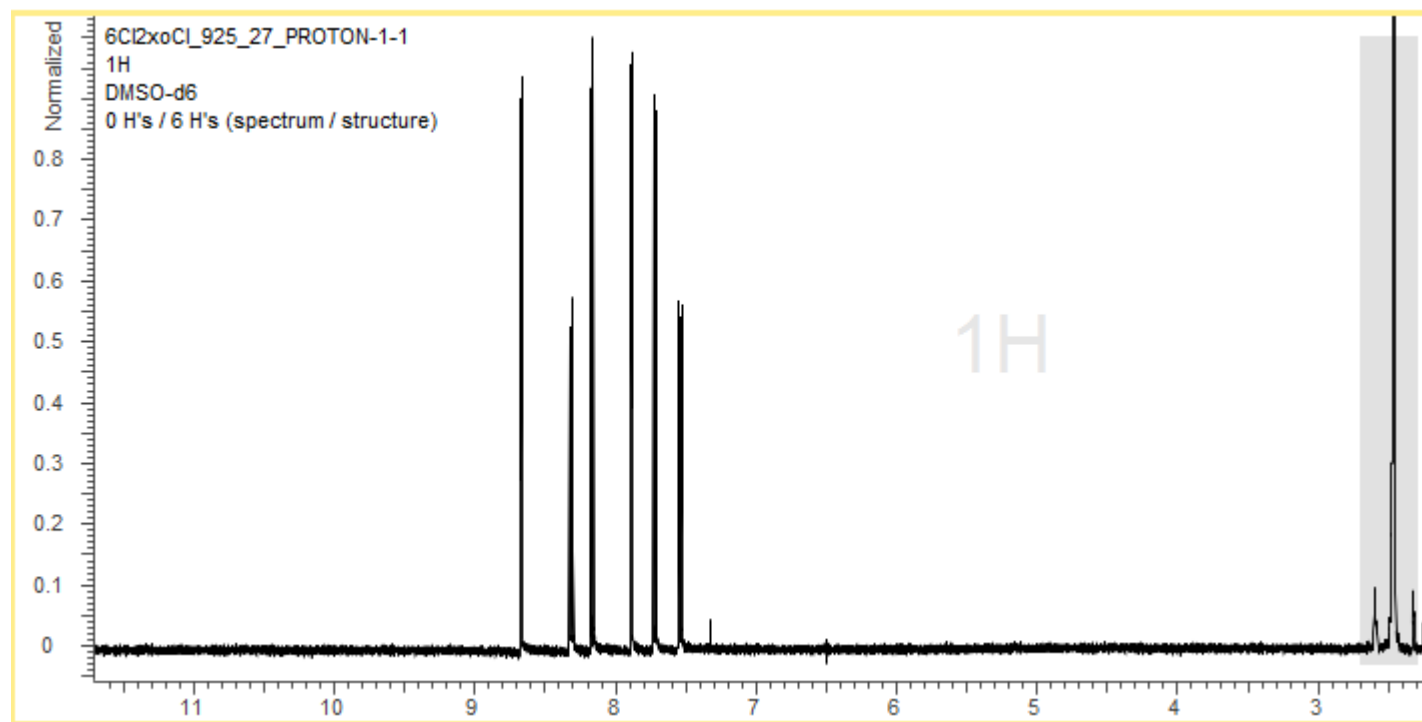
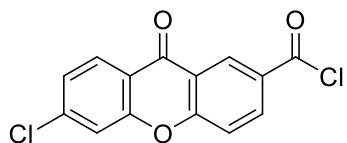


Figure S1

## Compound 2

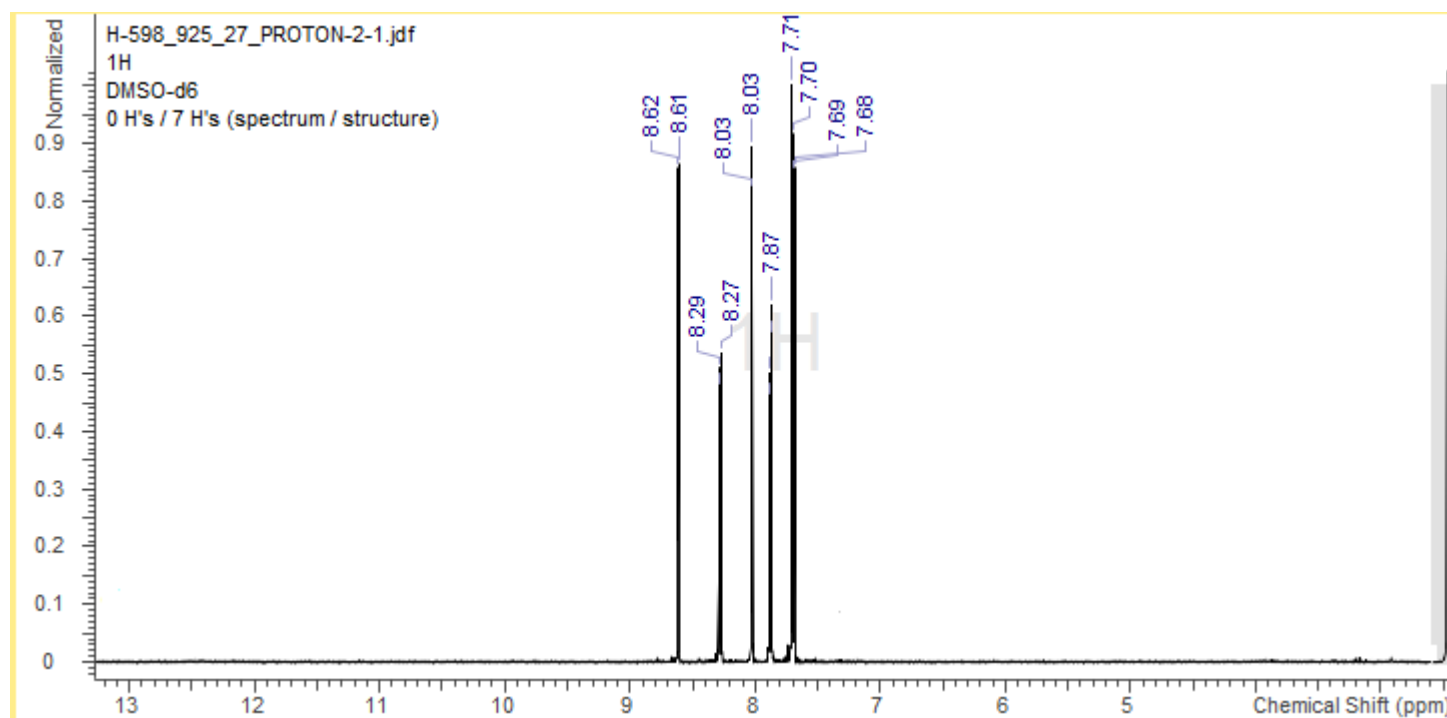
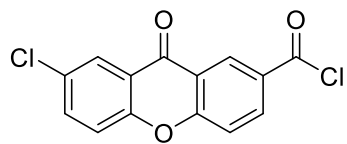


Figure S2

Compound 4

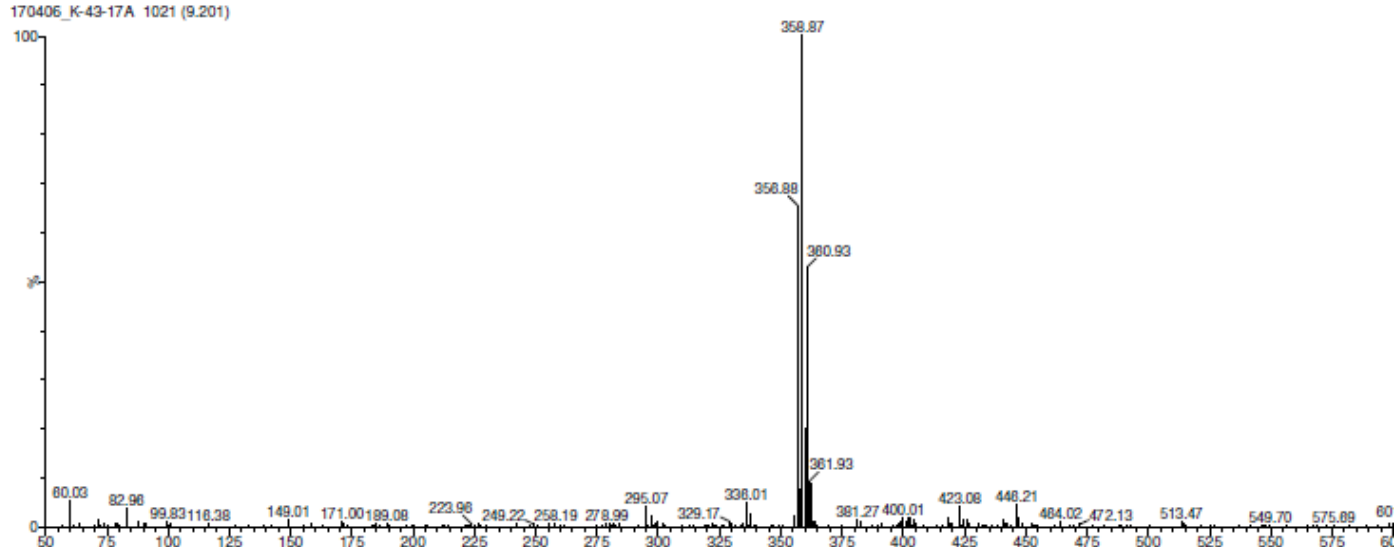
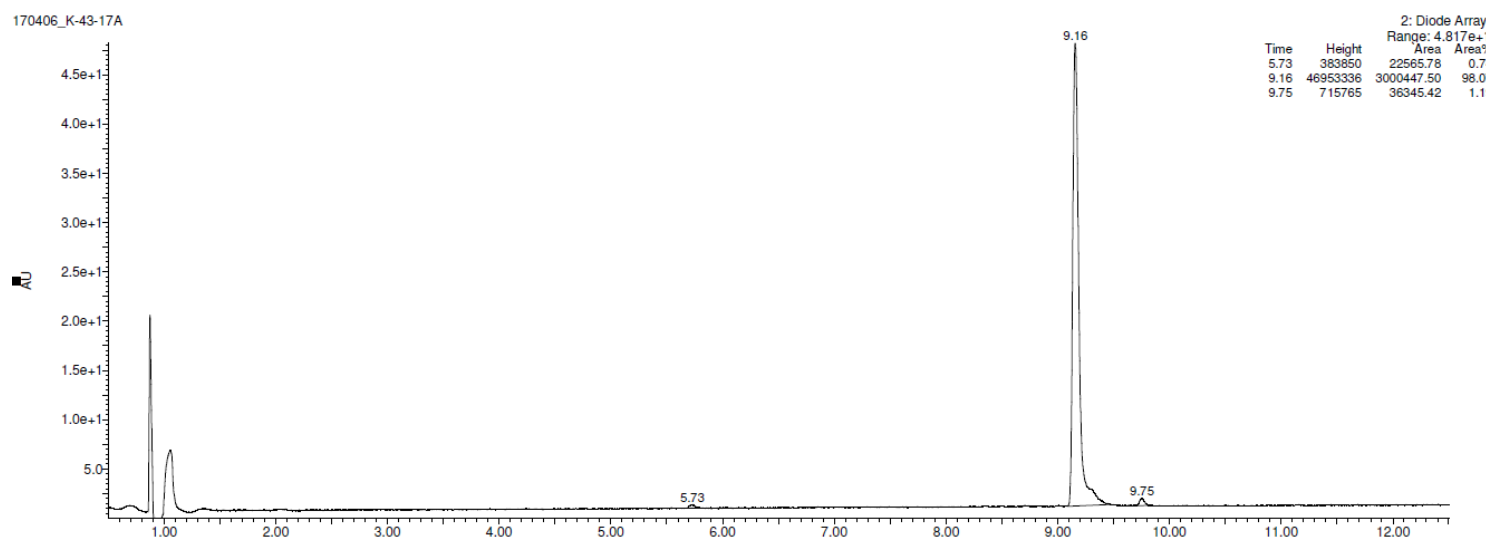
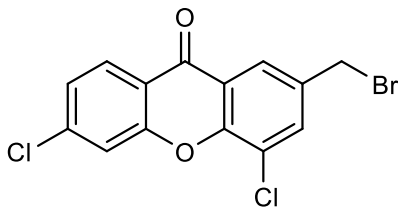


Figure S3

## Compound 4

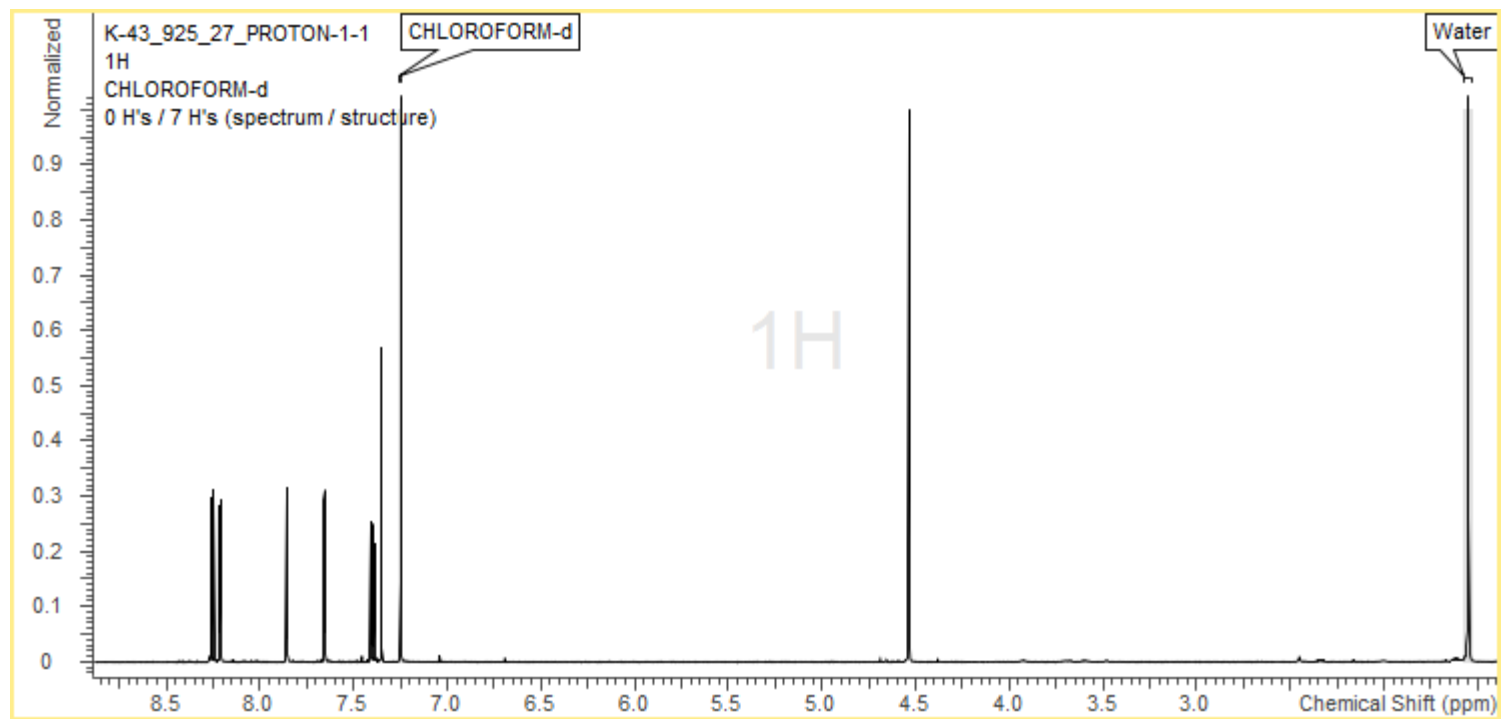
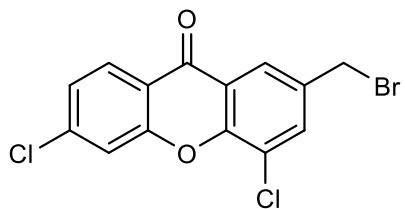
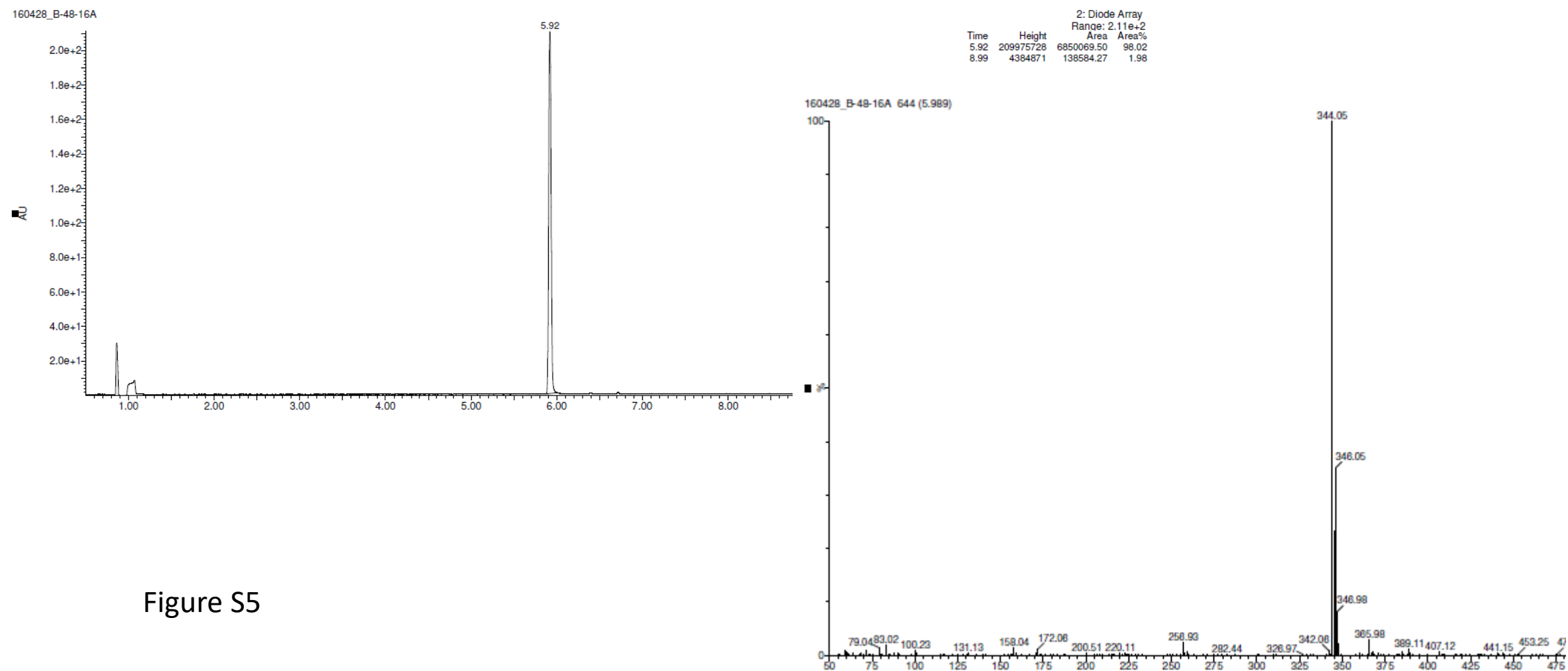
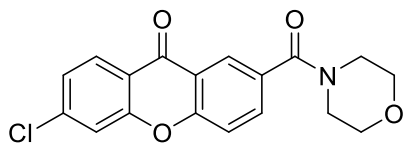


Figure S4

Final compounds

C1



C1

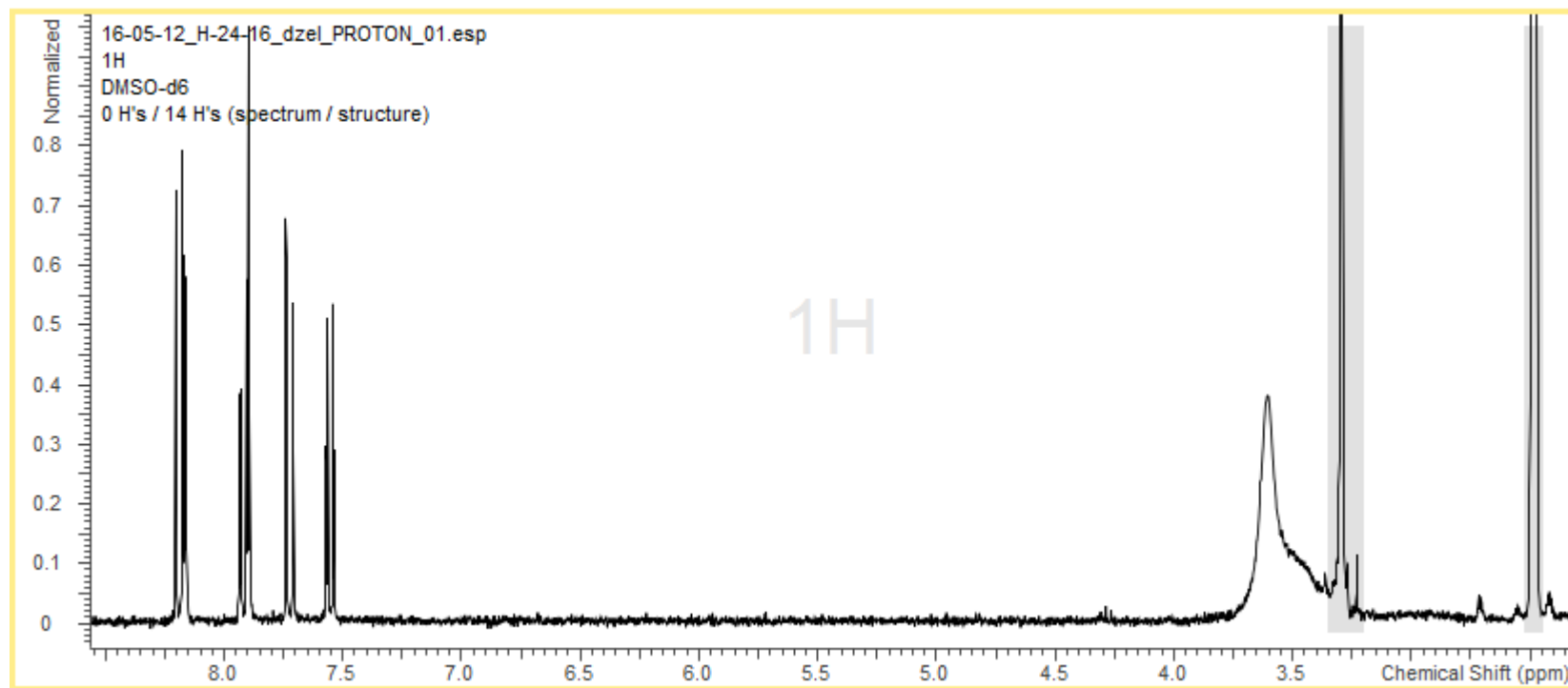
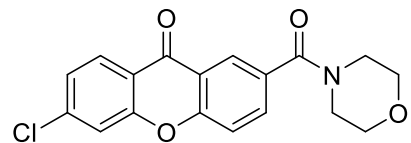


Figure S6

C1

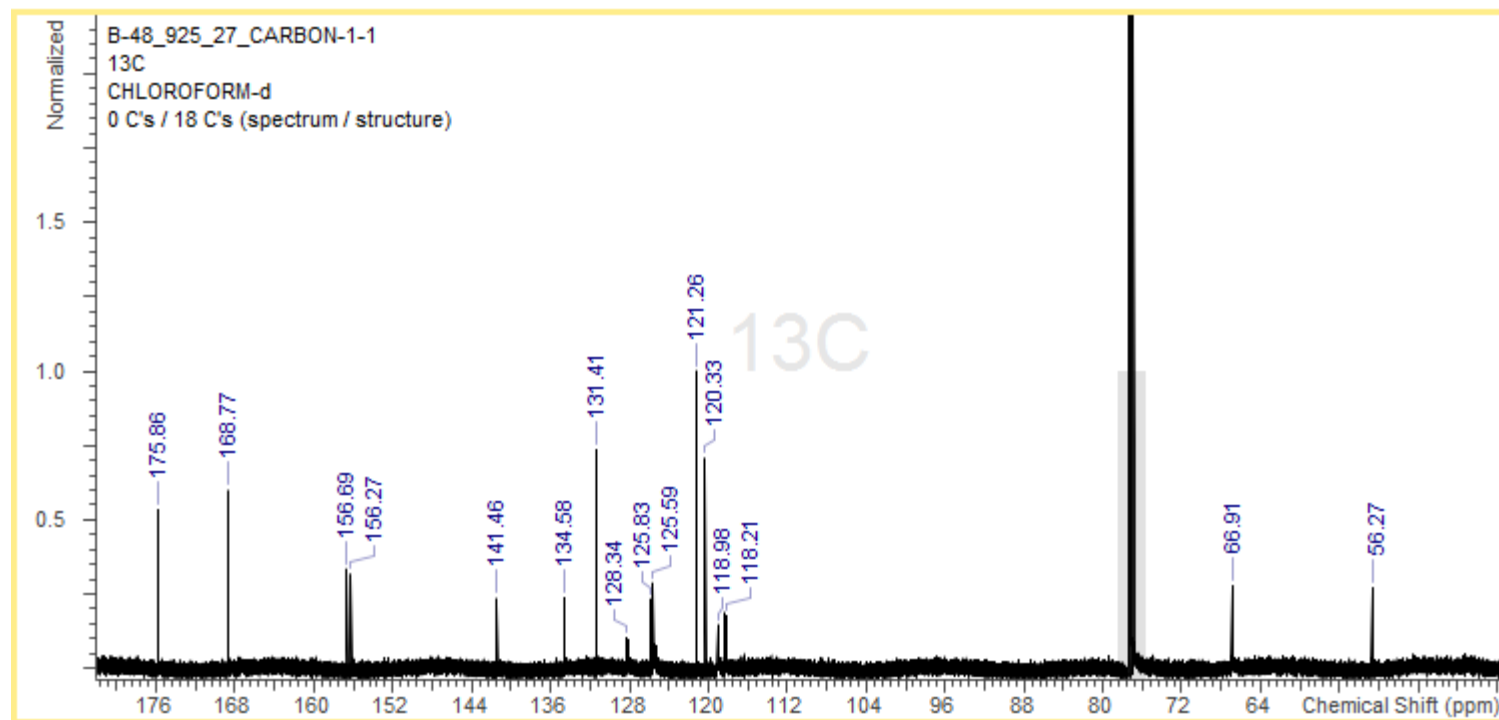
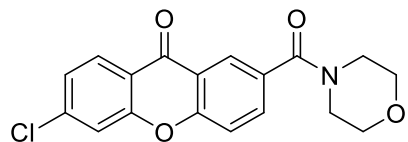


Figure S7

C2

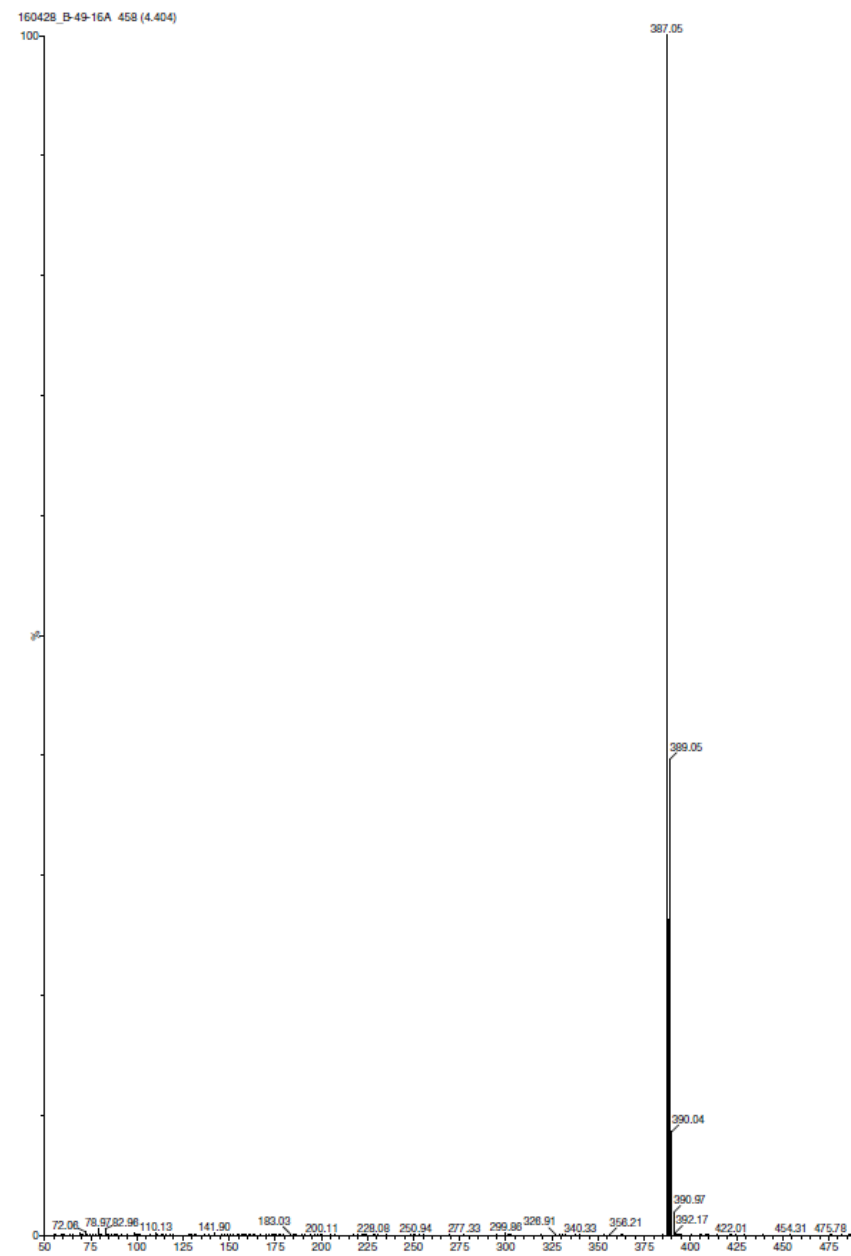
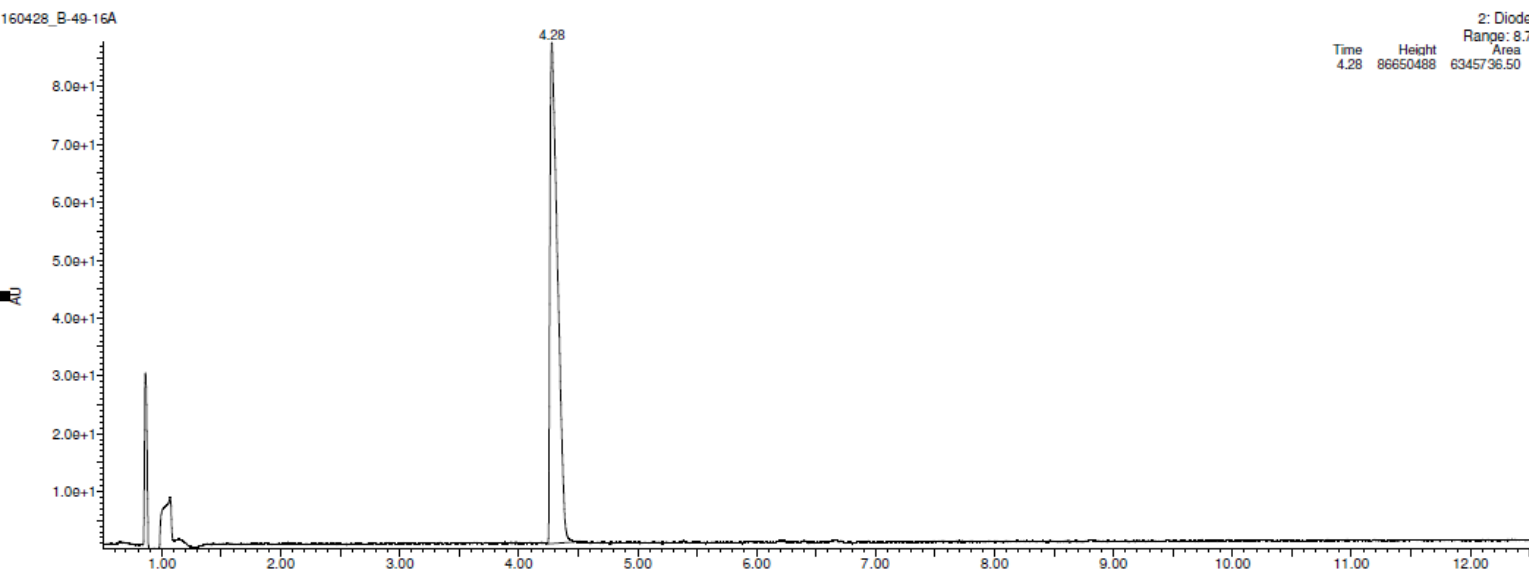
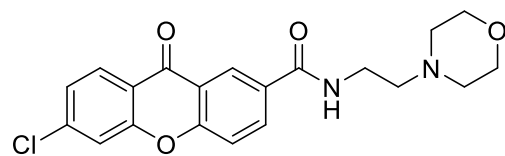


Figure S8

C2

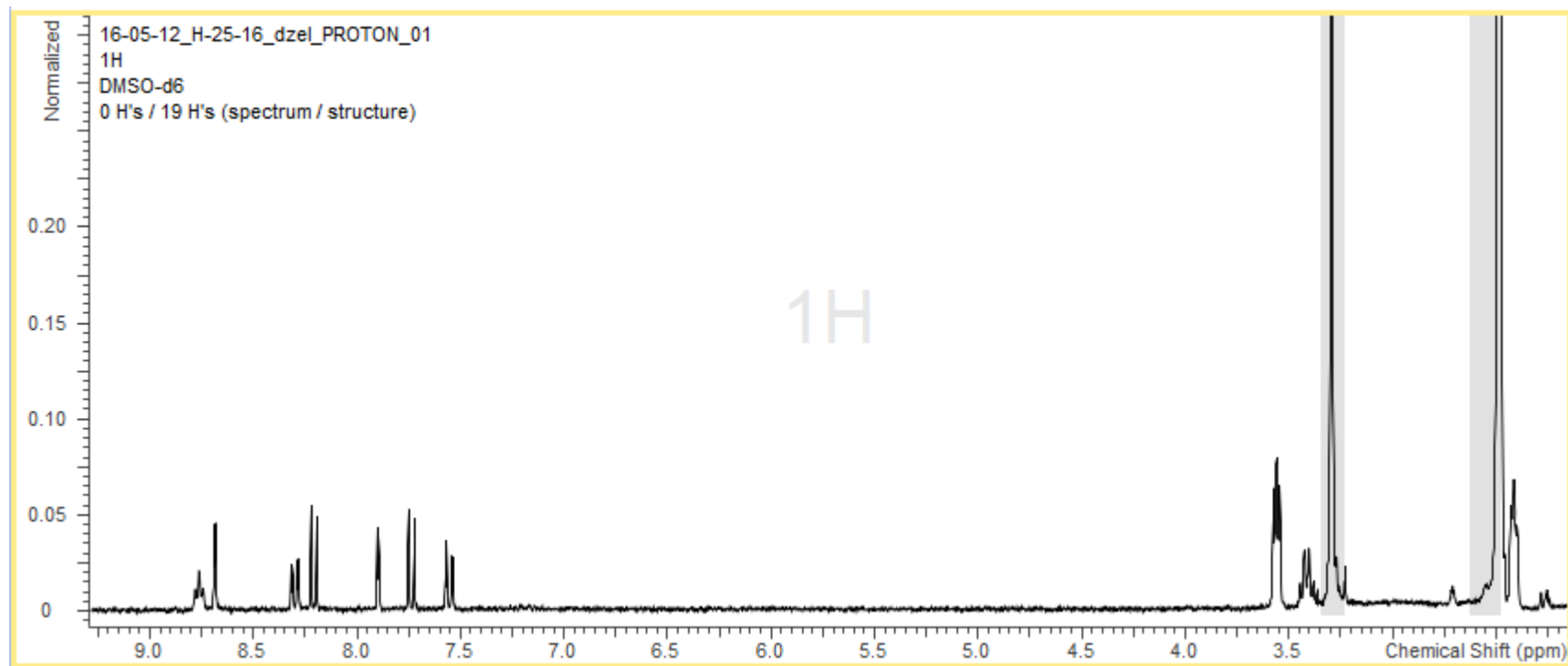
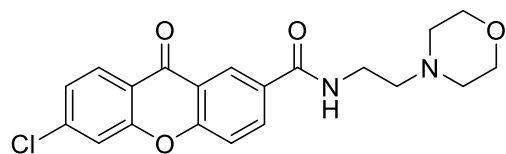


Figure S9

C2

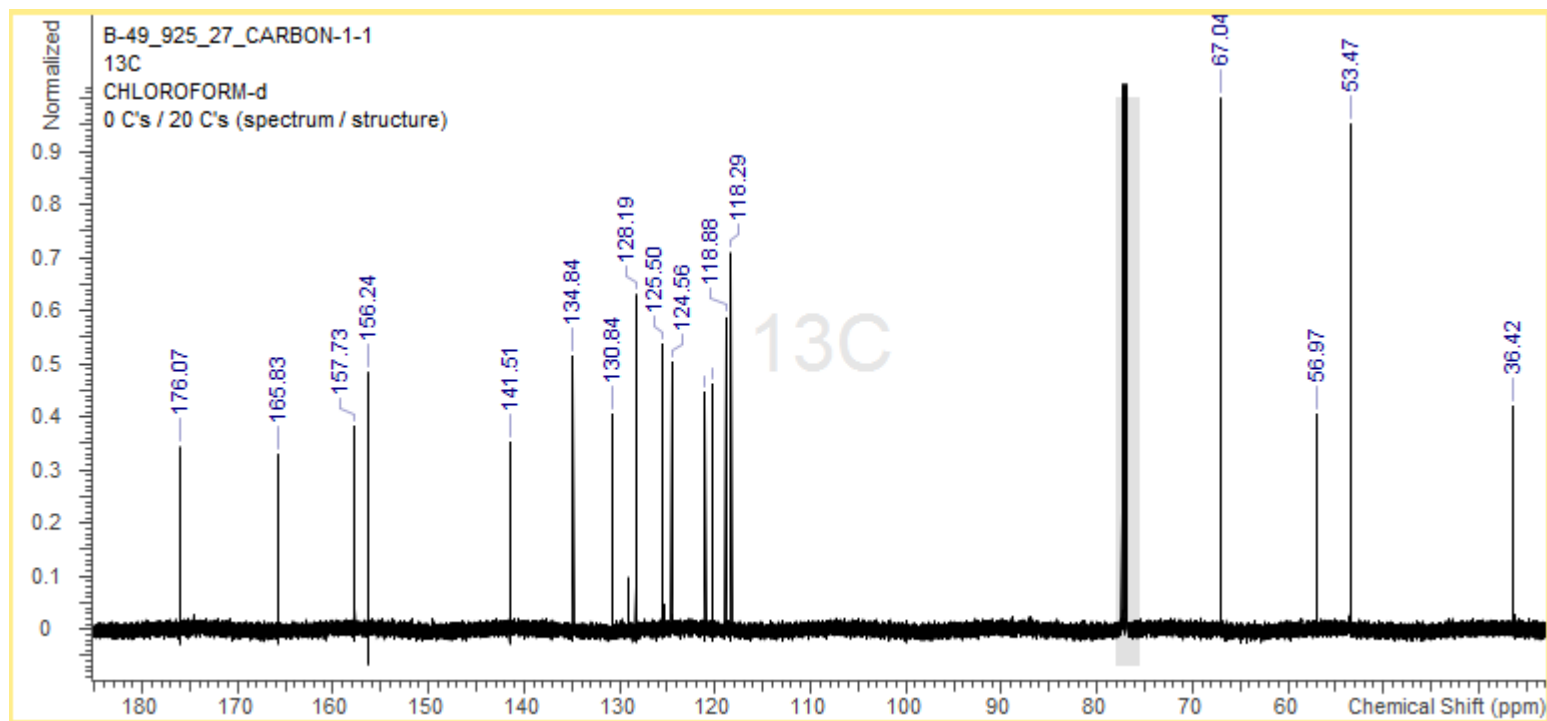
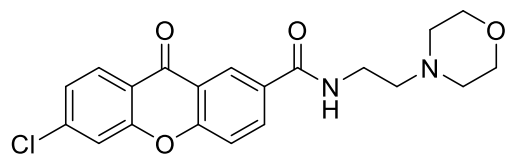
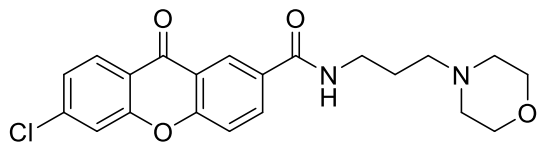
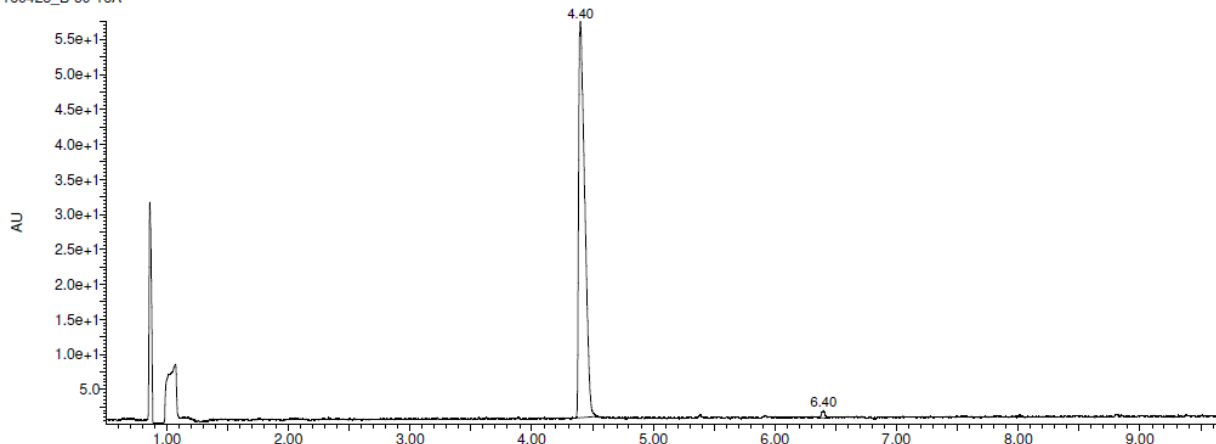


Figure S10

C3



160428\_B-50-16A



| 2: Diode Array  |          |            |       |
|-----------------|----------|------------|-------|
| Range: 5.749e+1 |          |            |       |
| Time            | Height   | Area       | Area% |
| 4.40            | 56643796 | 3283074.25 | 98.97 |
| 6.40            | 1074267  | 34258.82   | 1.03  |

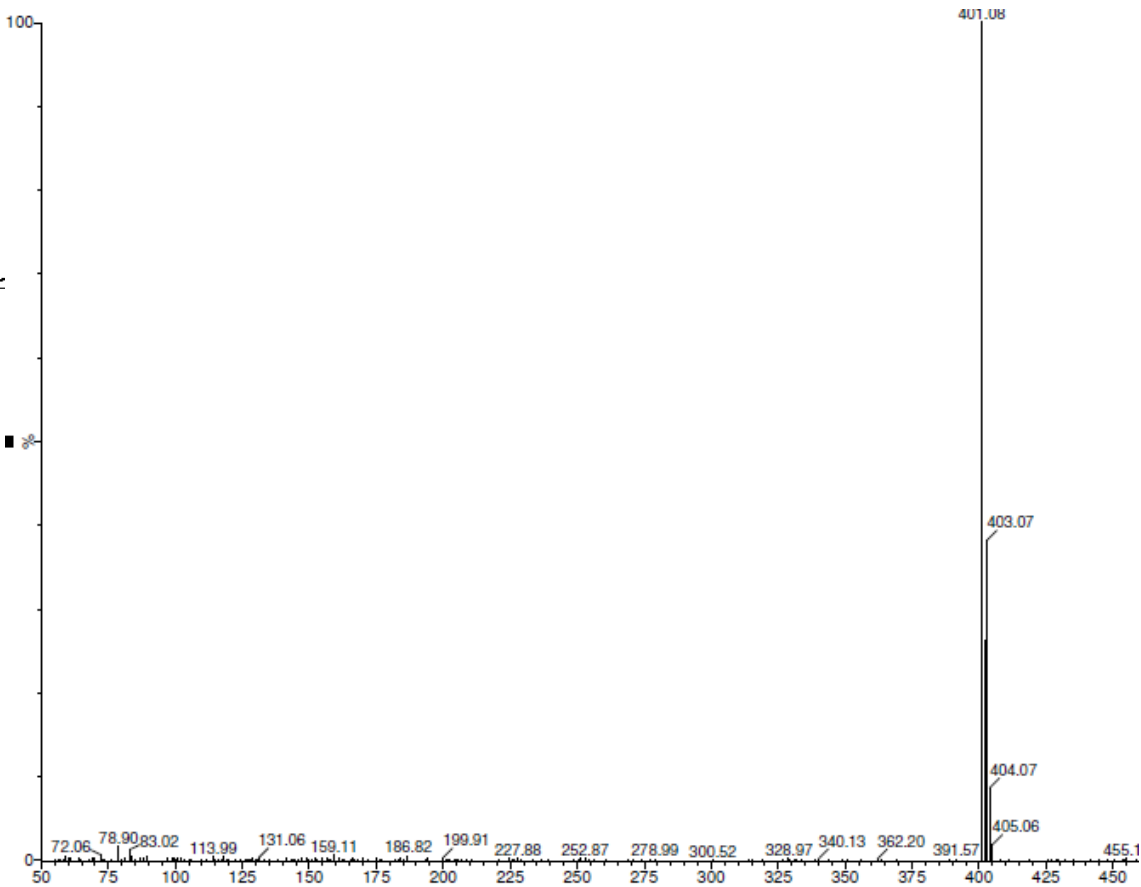


Figure S11

C3

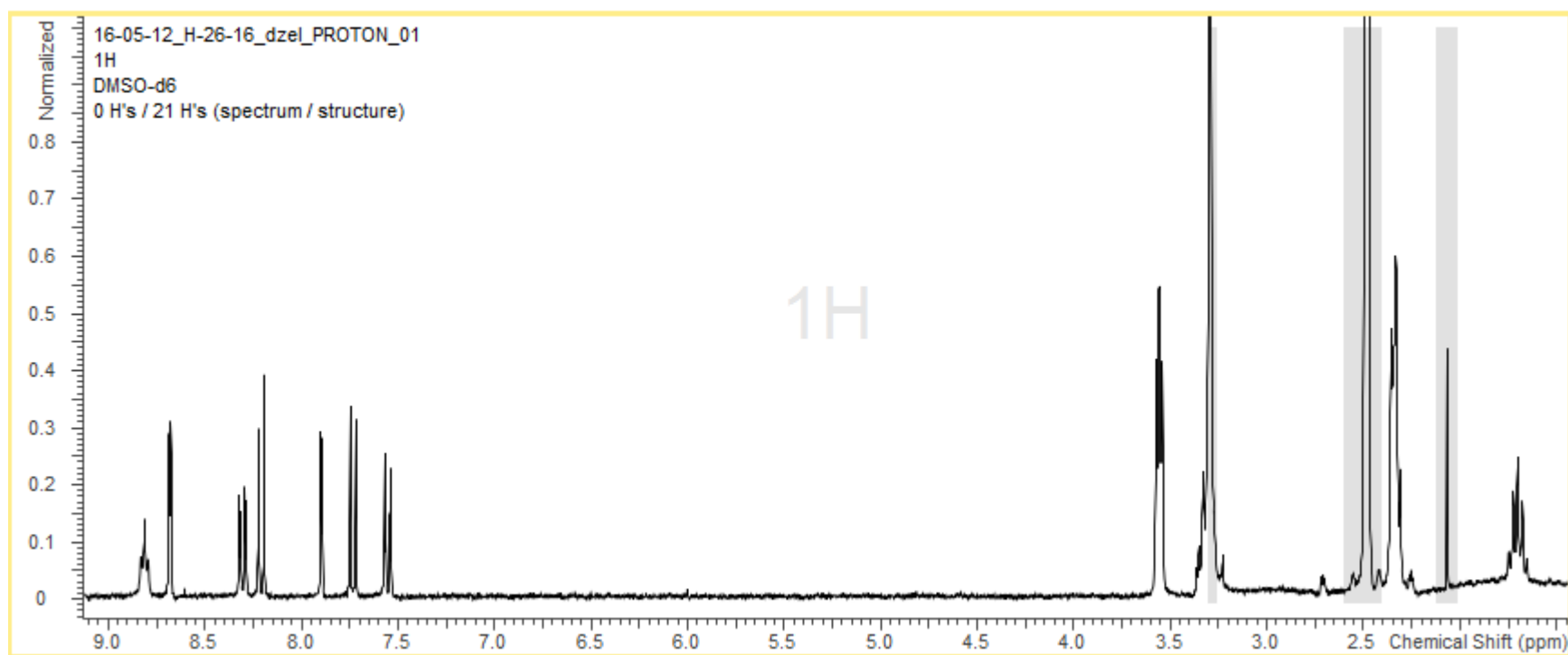
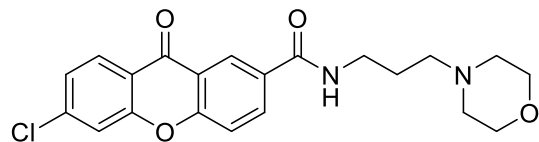


Figure S12

C3

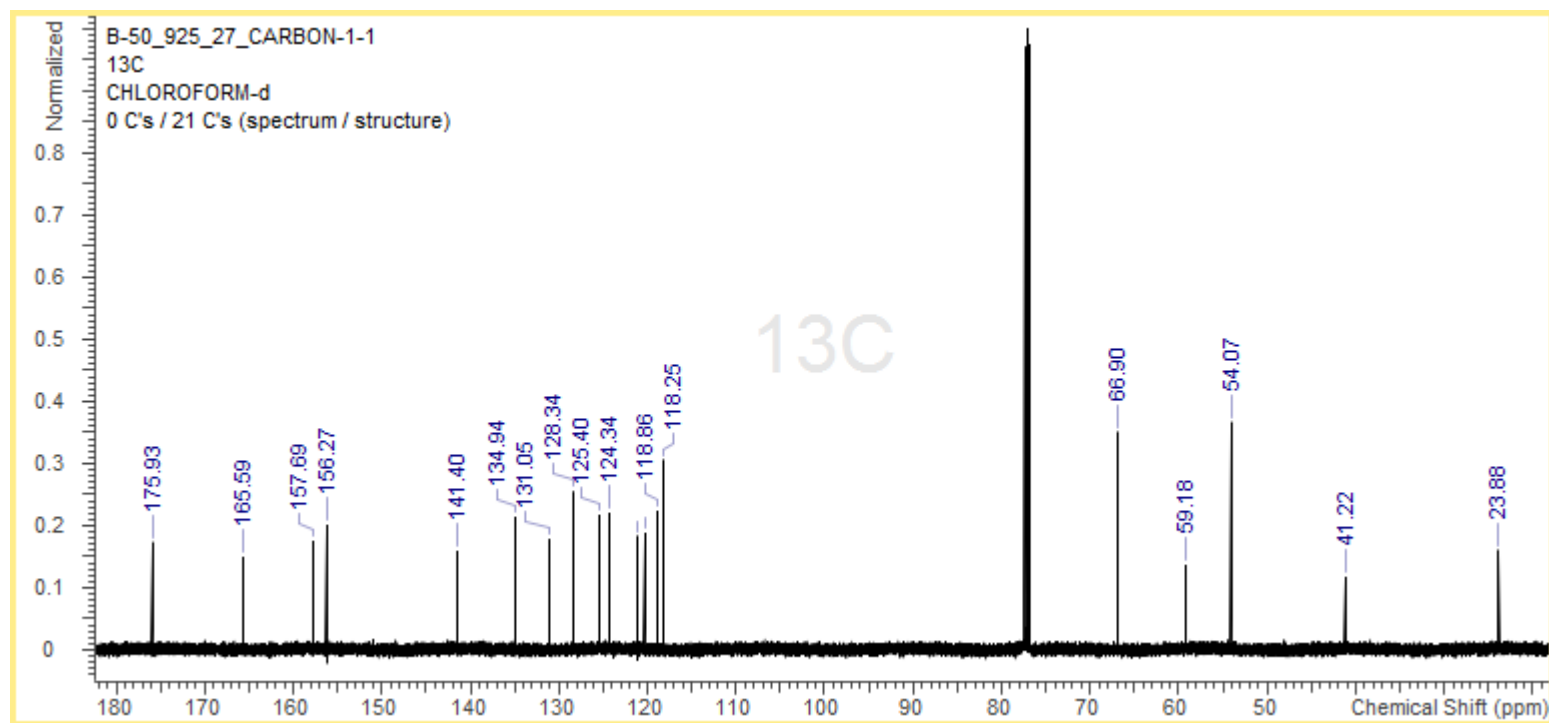
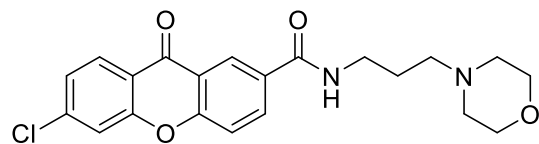


Figure S13

C4

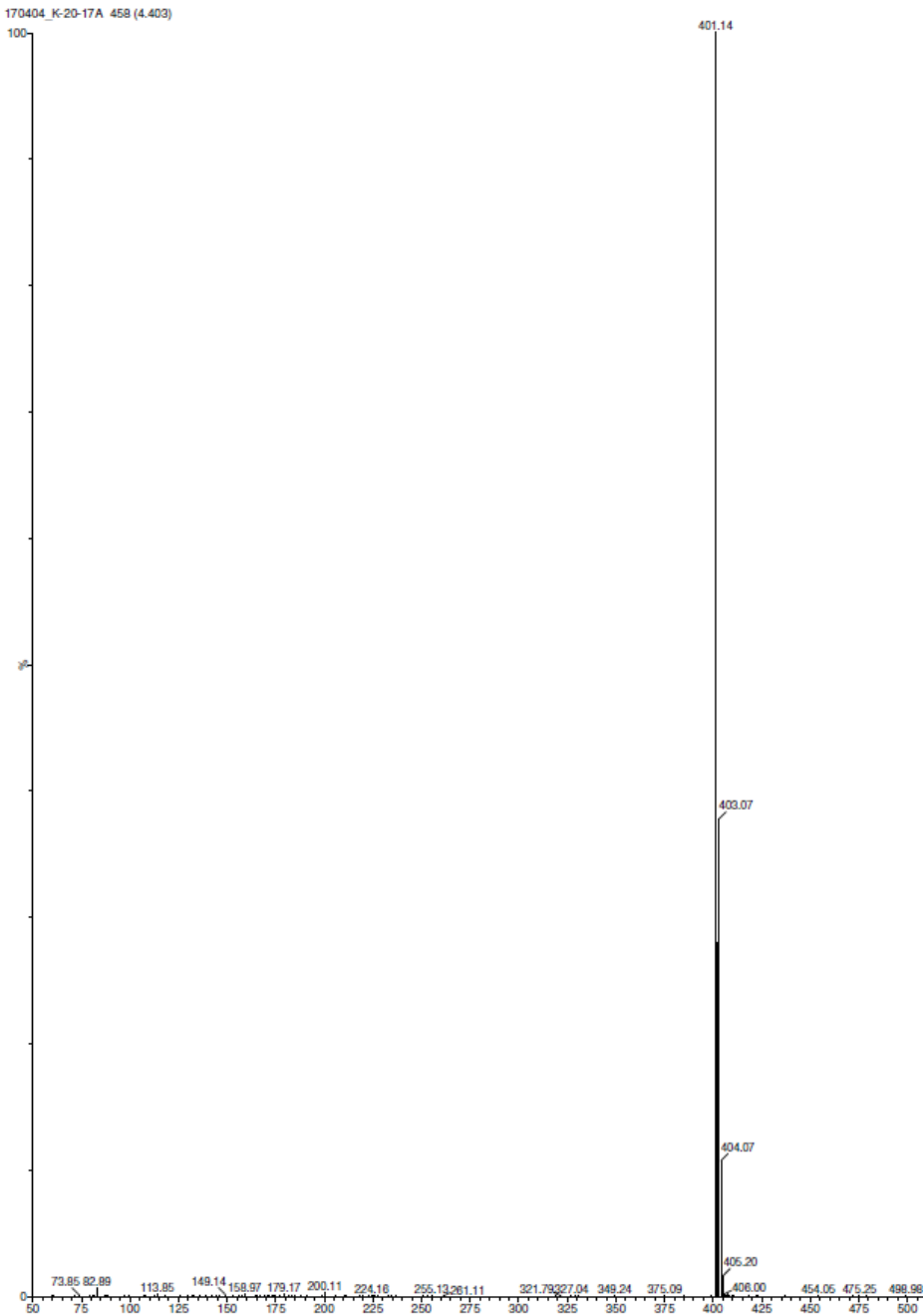
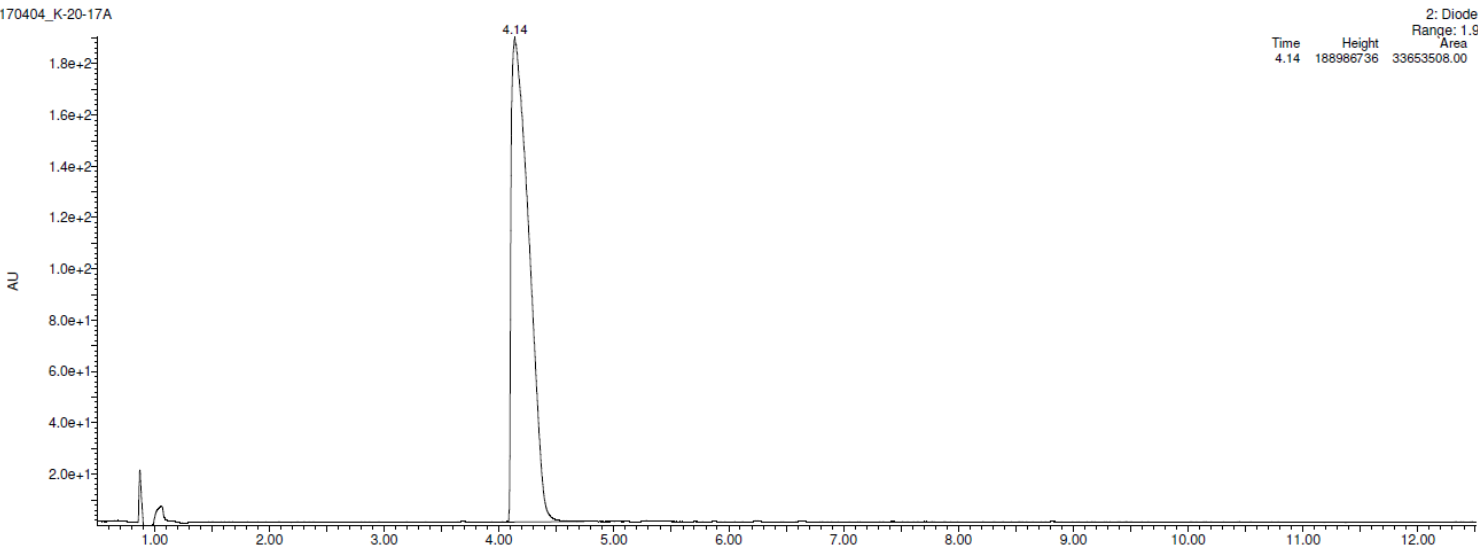
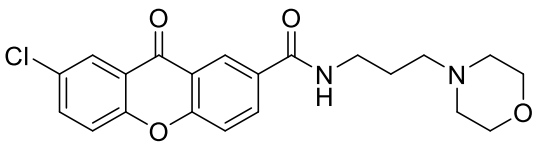


Figure S14

**C4**

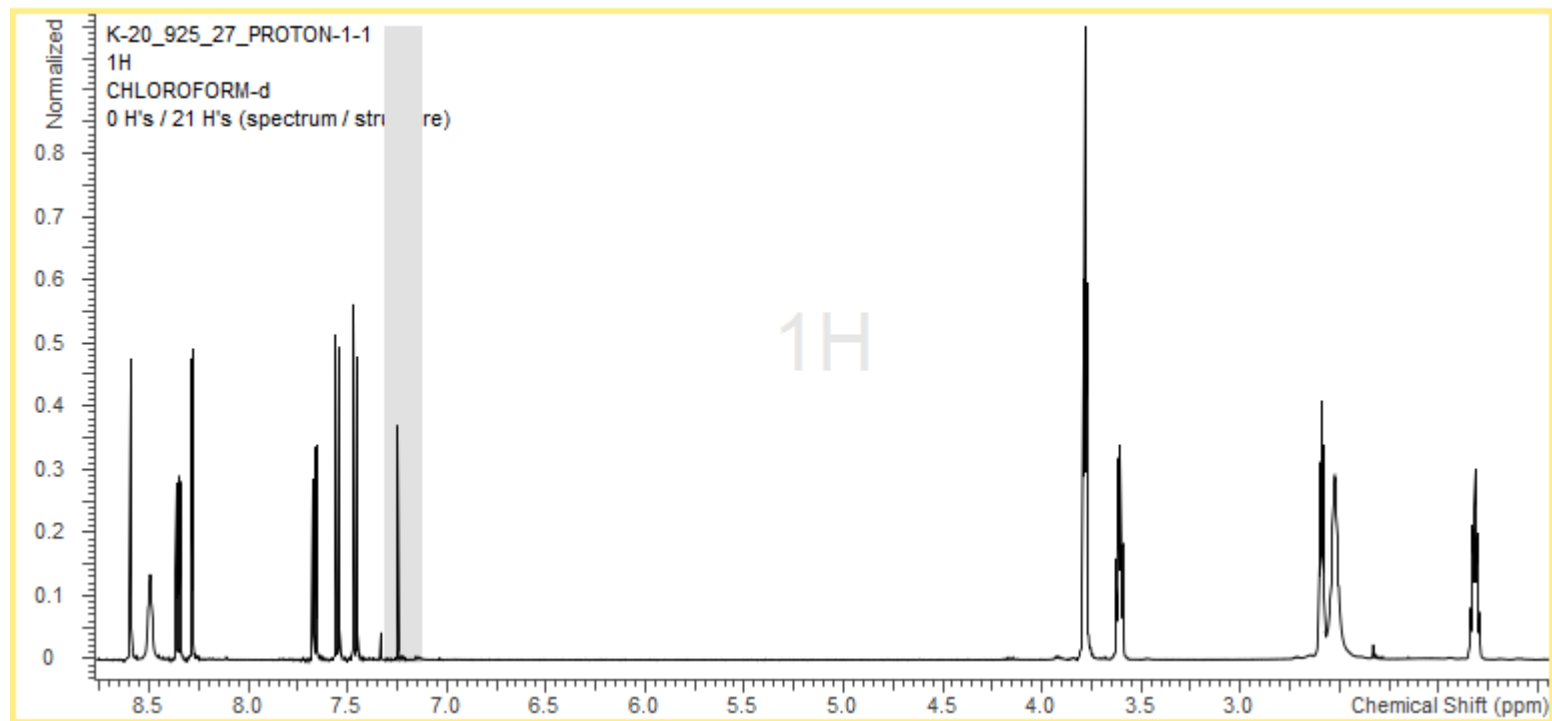
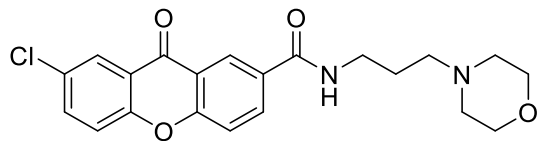


Figure S15

C4

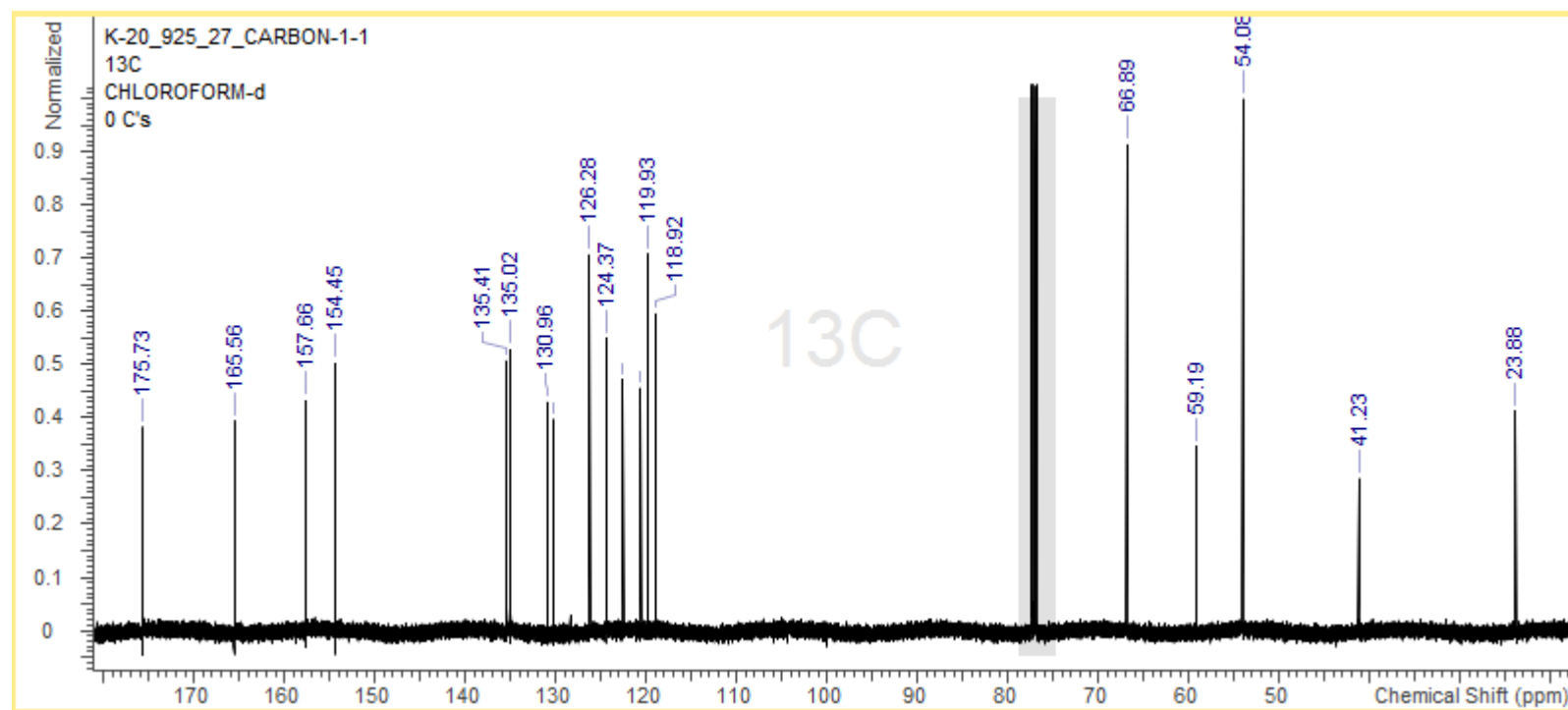
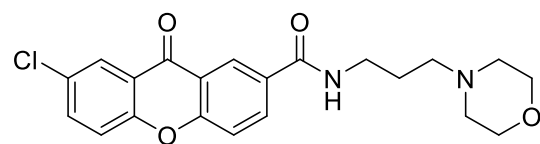
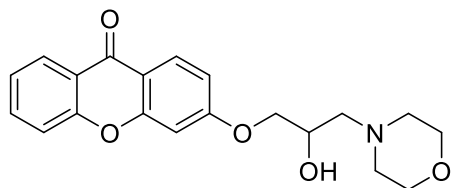
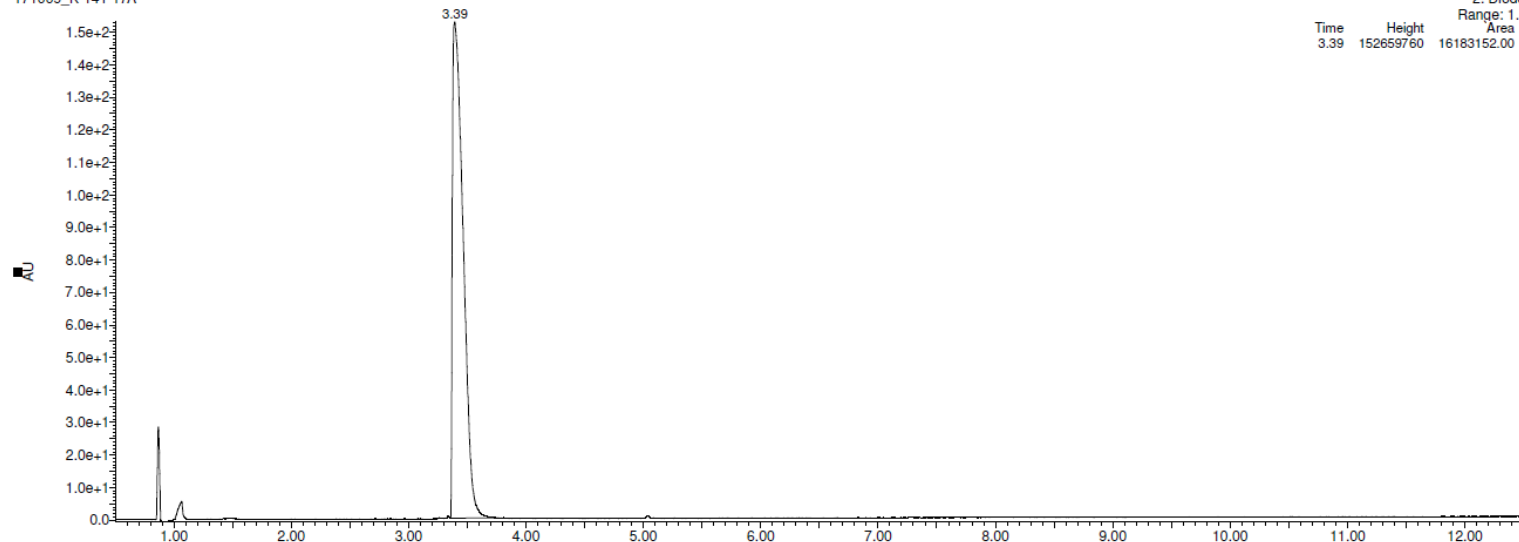


Figure S16

C5



171009\_K-141-17A



2: Diode Array  
Range: 1.536e+2

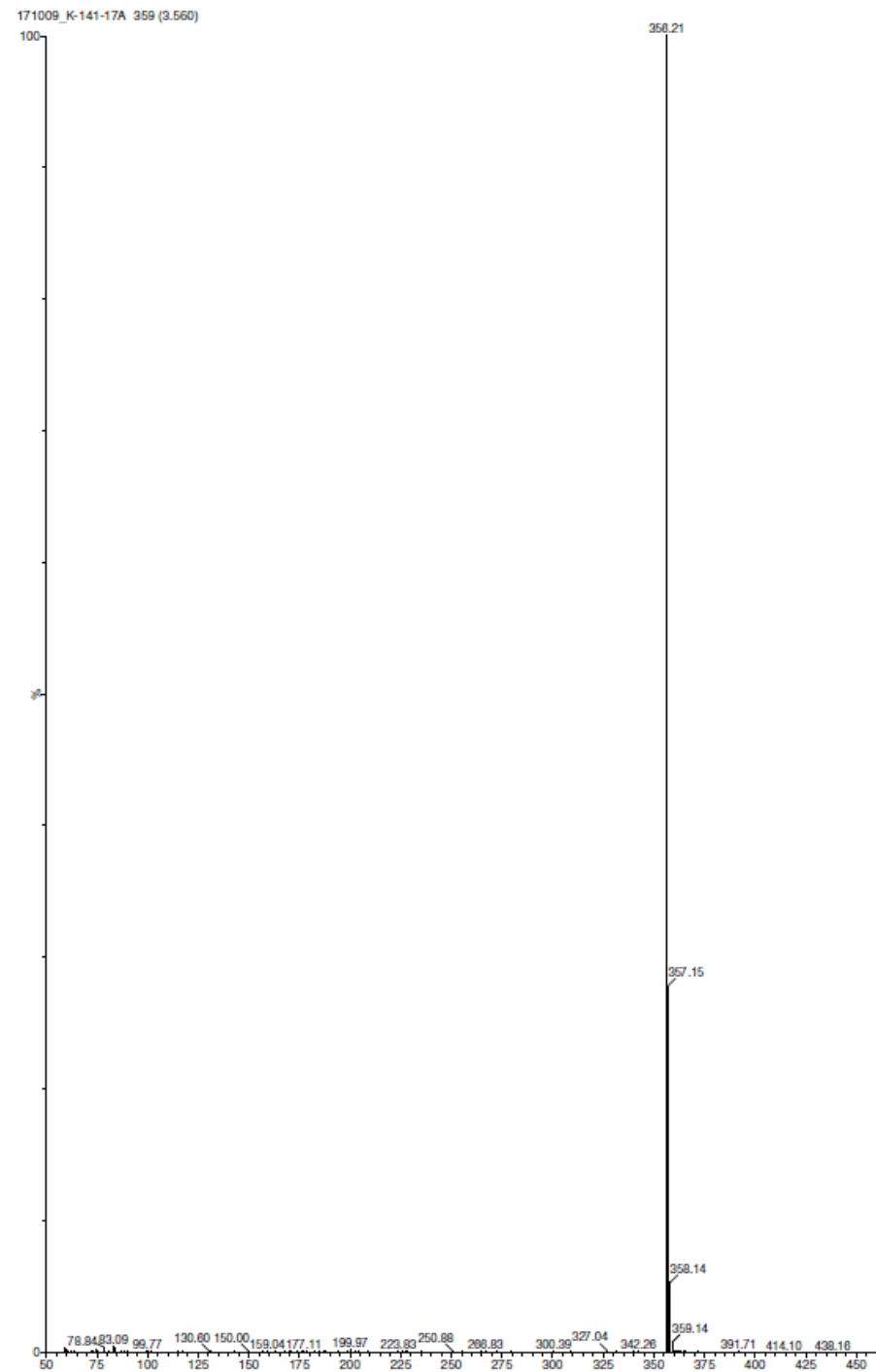


Figure S17

C5

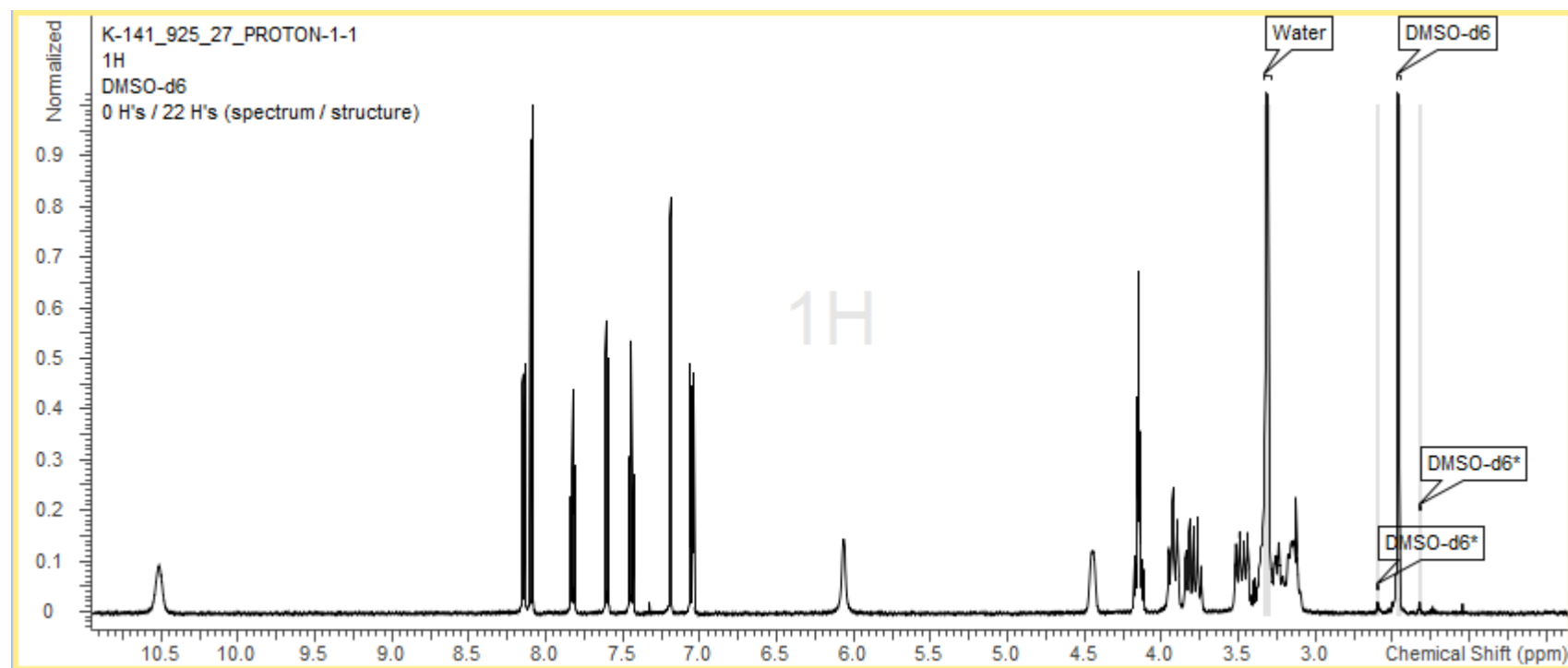
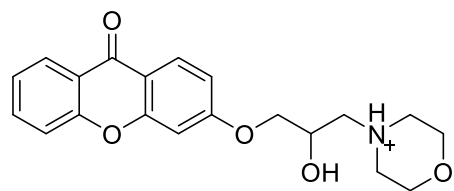


Figure S18

C5

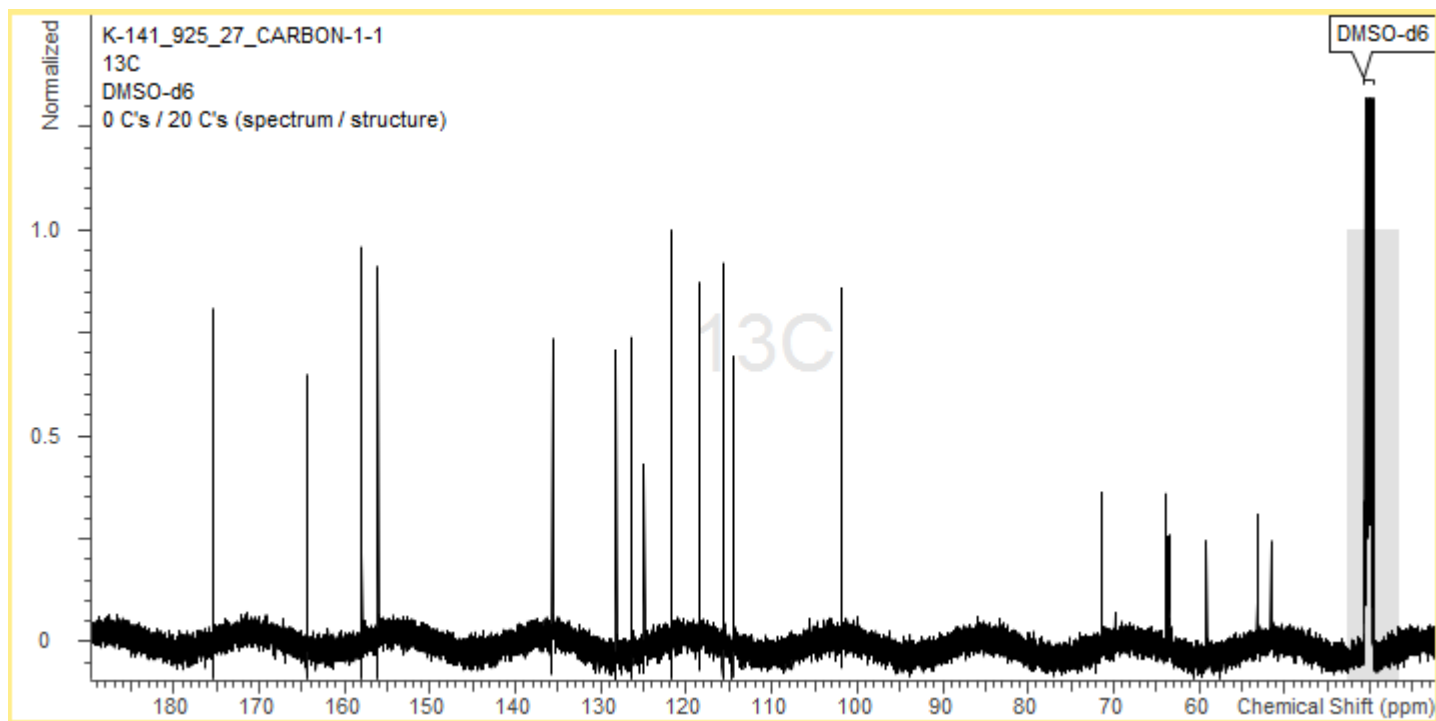
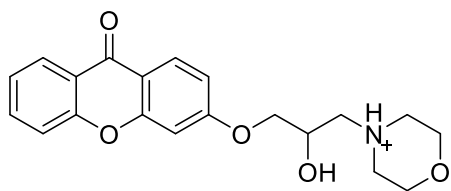


Figure S19

C6

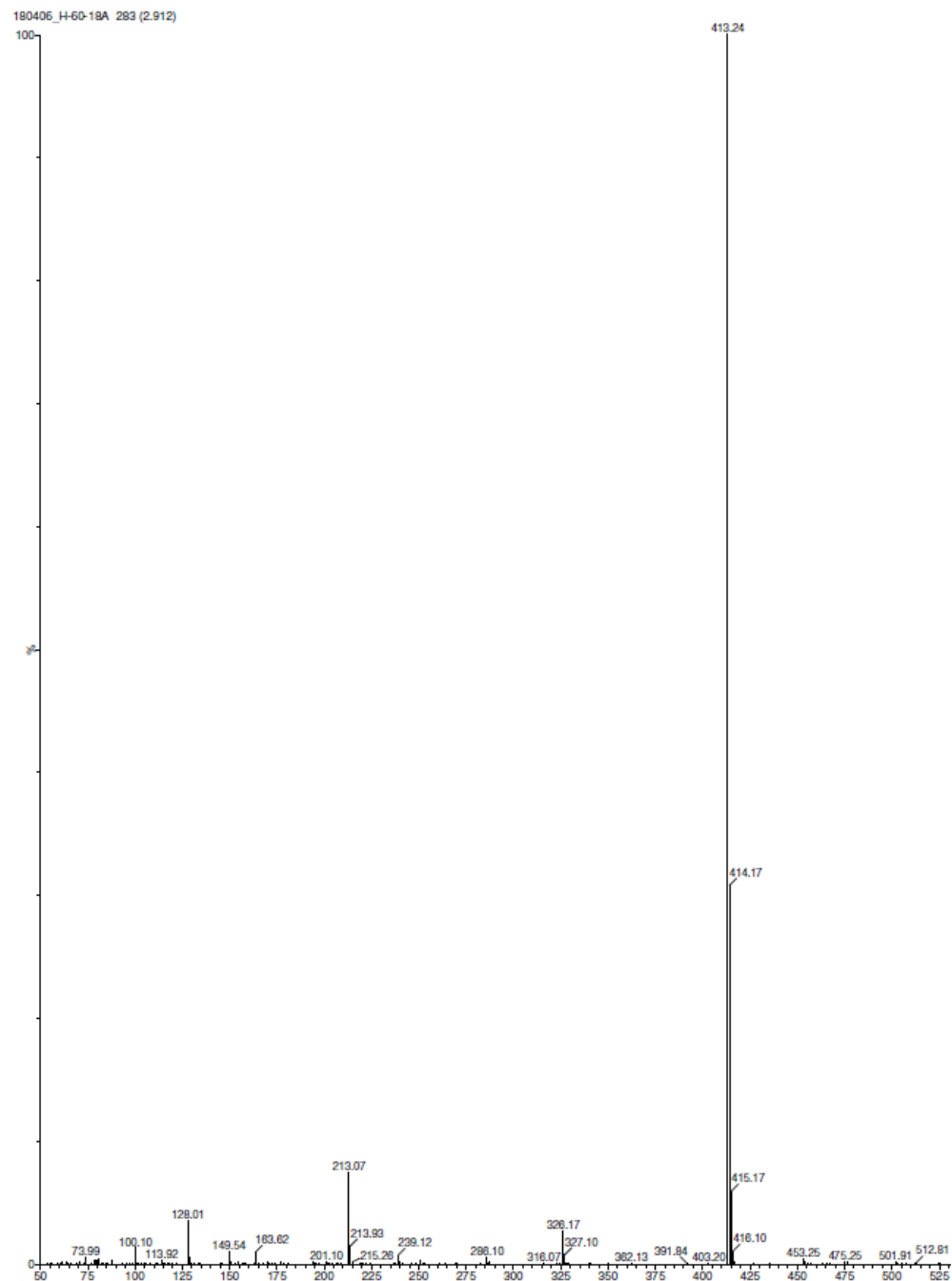
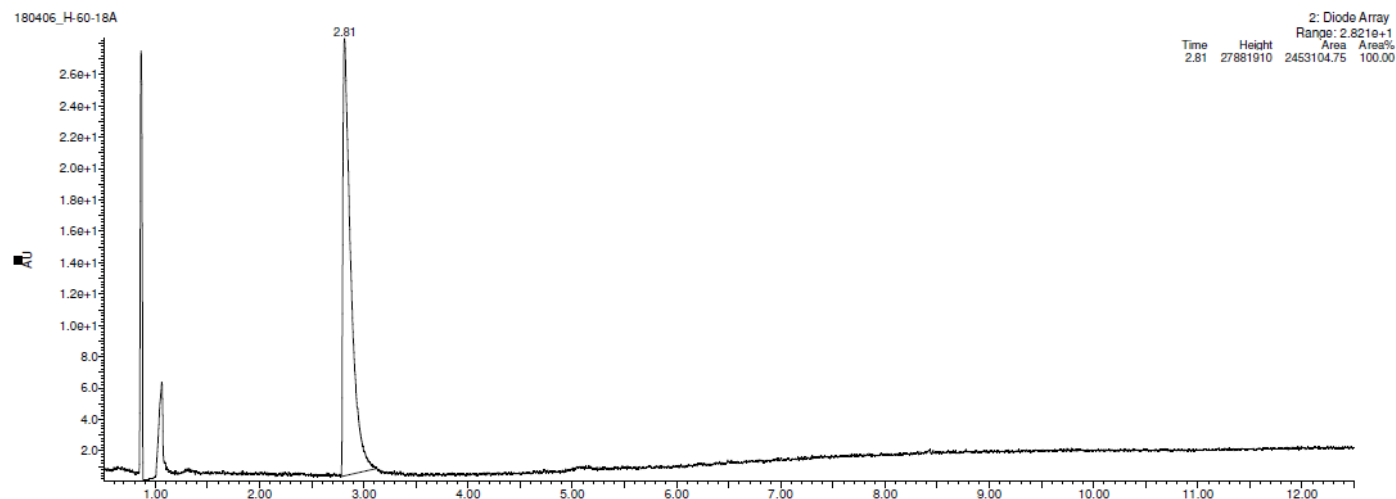
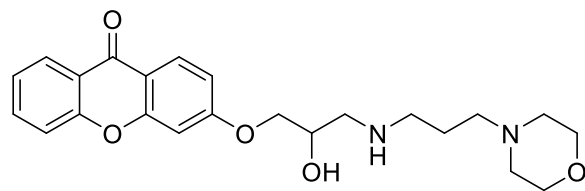


Figure S20

C6

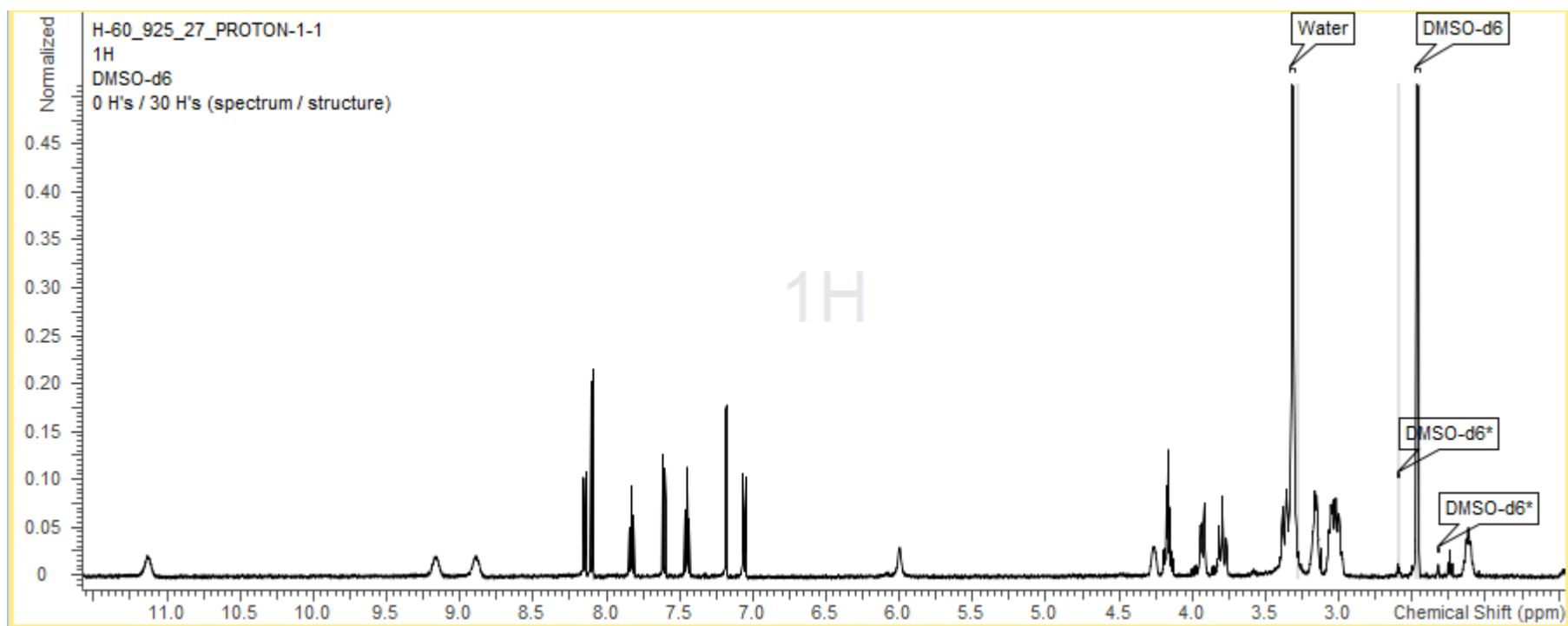
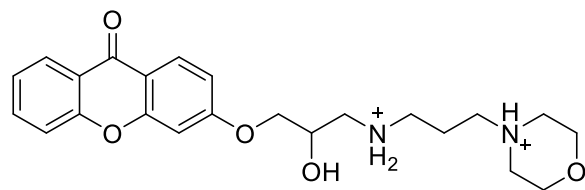


Figure S21

C6

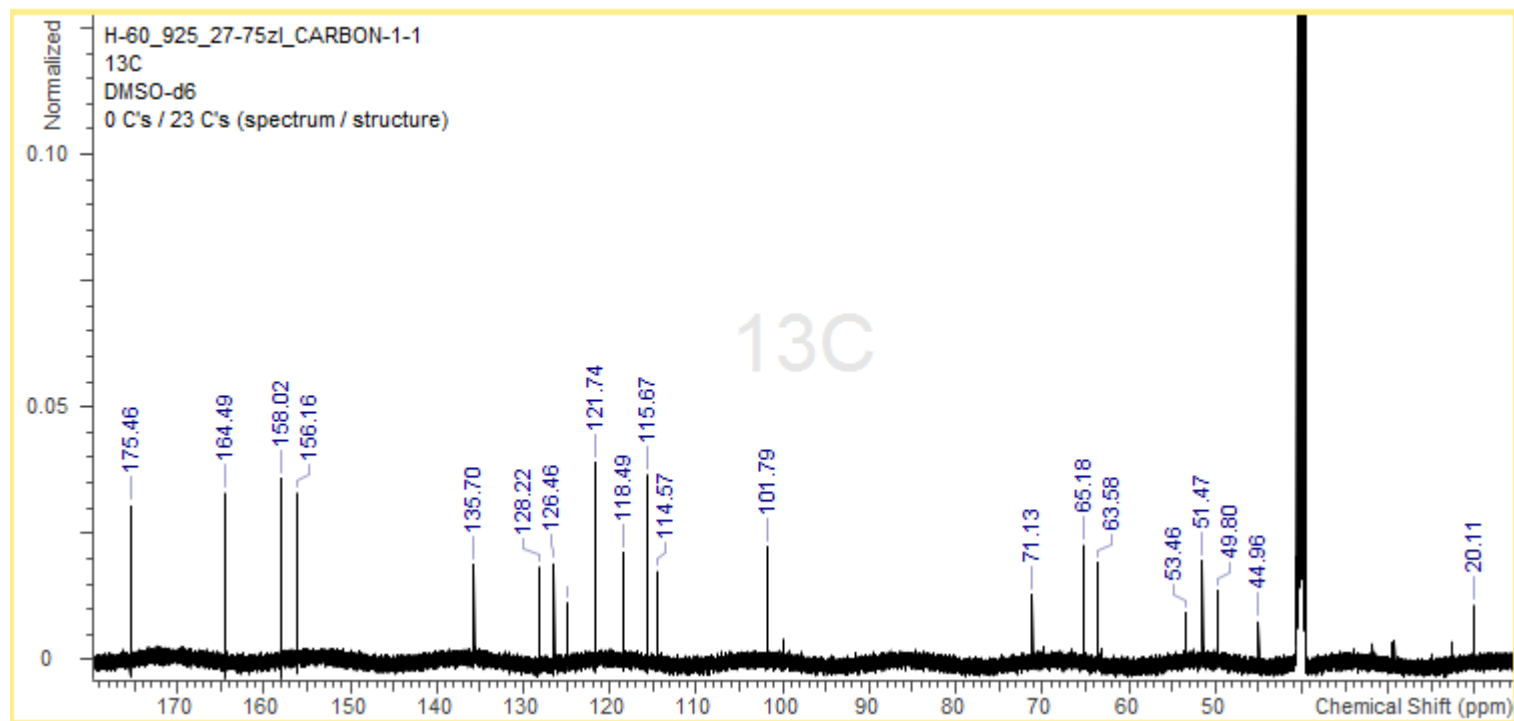
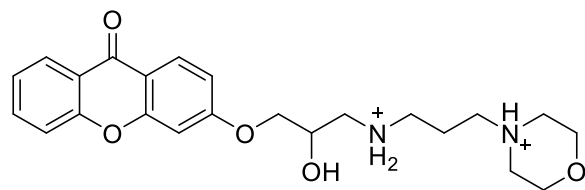
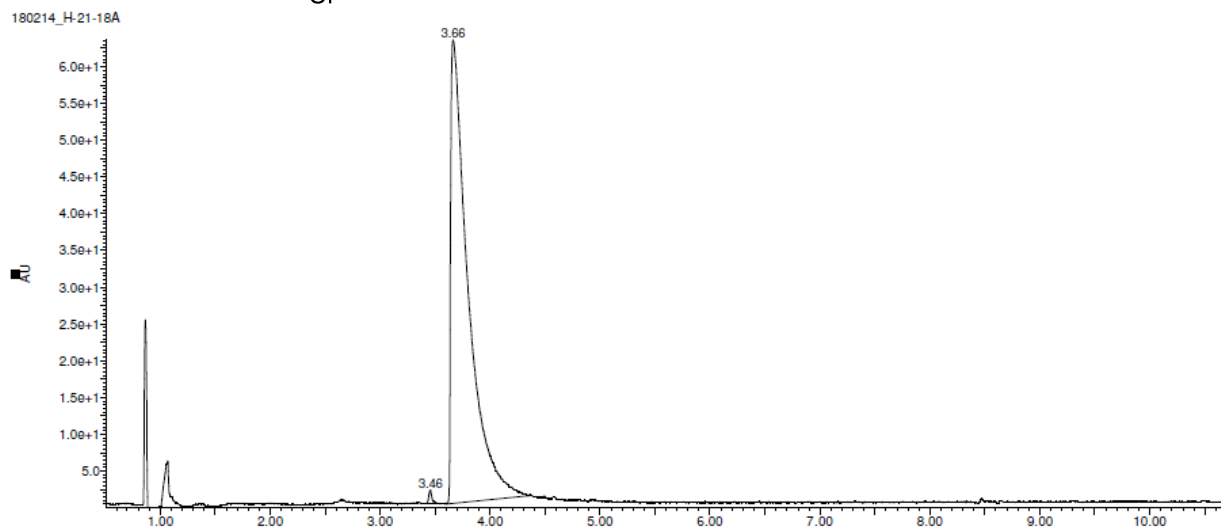
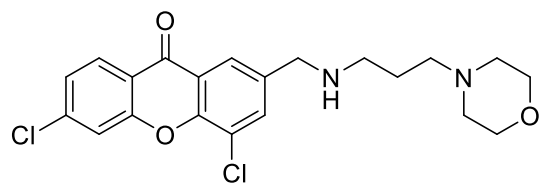


Figure S22

C7



2: Diode Array  
Range: 6.357e+1

| Time | Height   | Area        | Area% |
|------|----------|-------------|-------|
| 3.46 | 1840281  | 61413.39    | 0.53  |
| 3.66 | 62995880 | 11503902.00 | 99.47 |

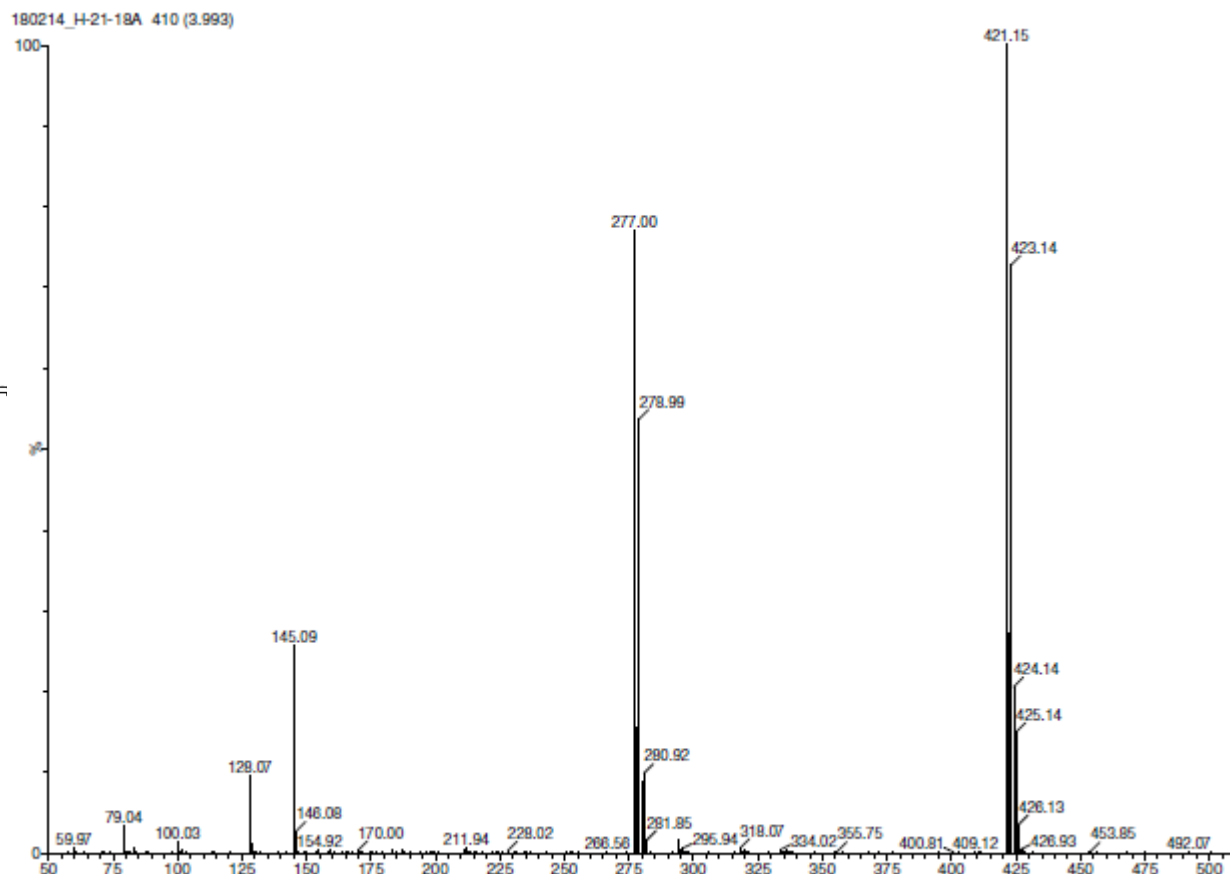


Figure S23

C7

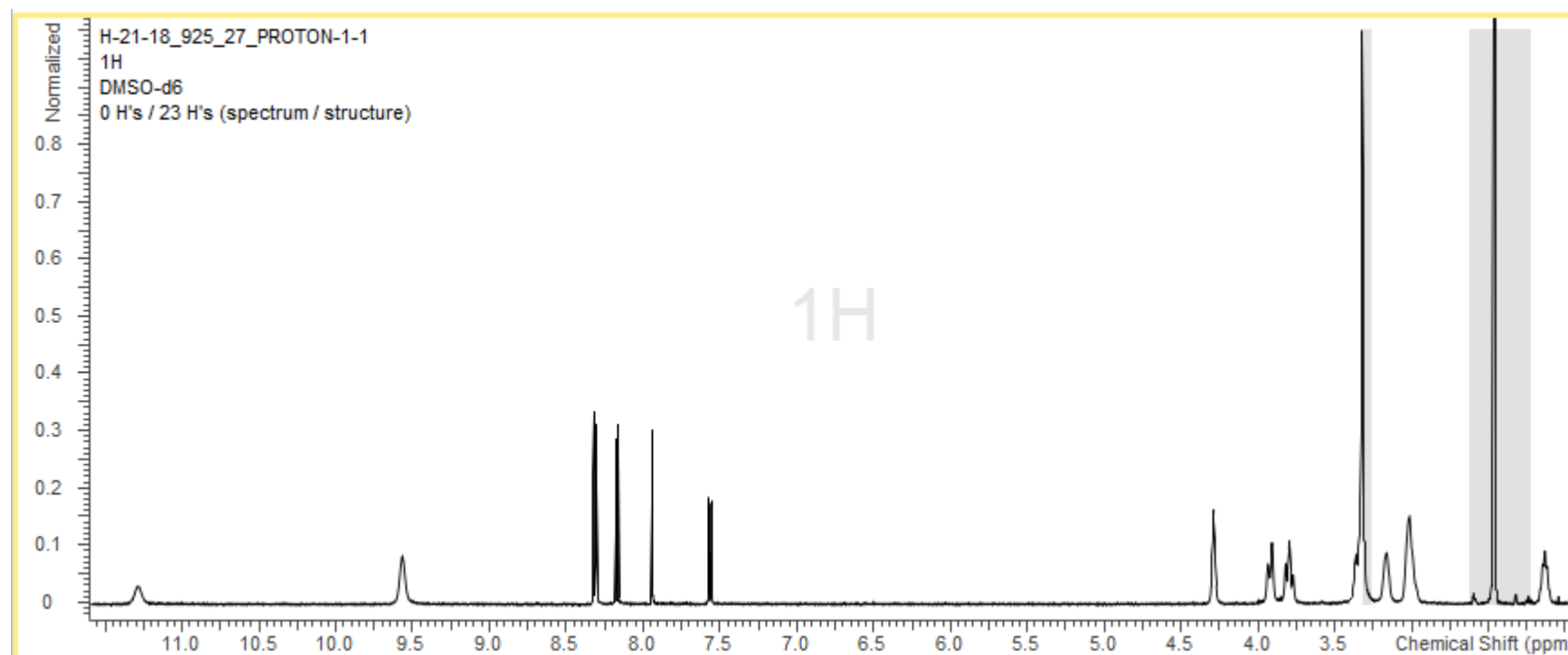
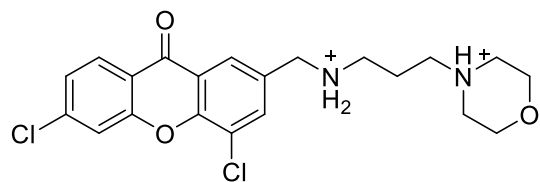


Figure S24

C7

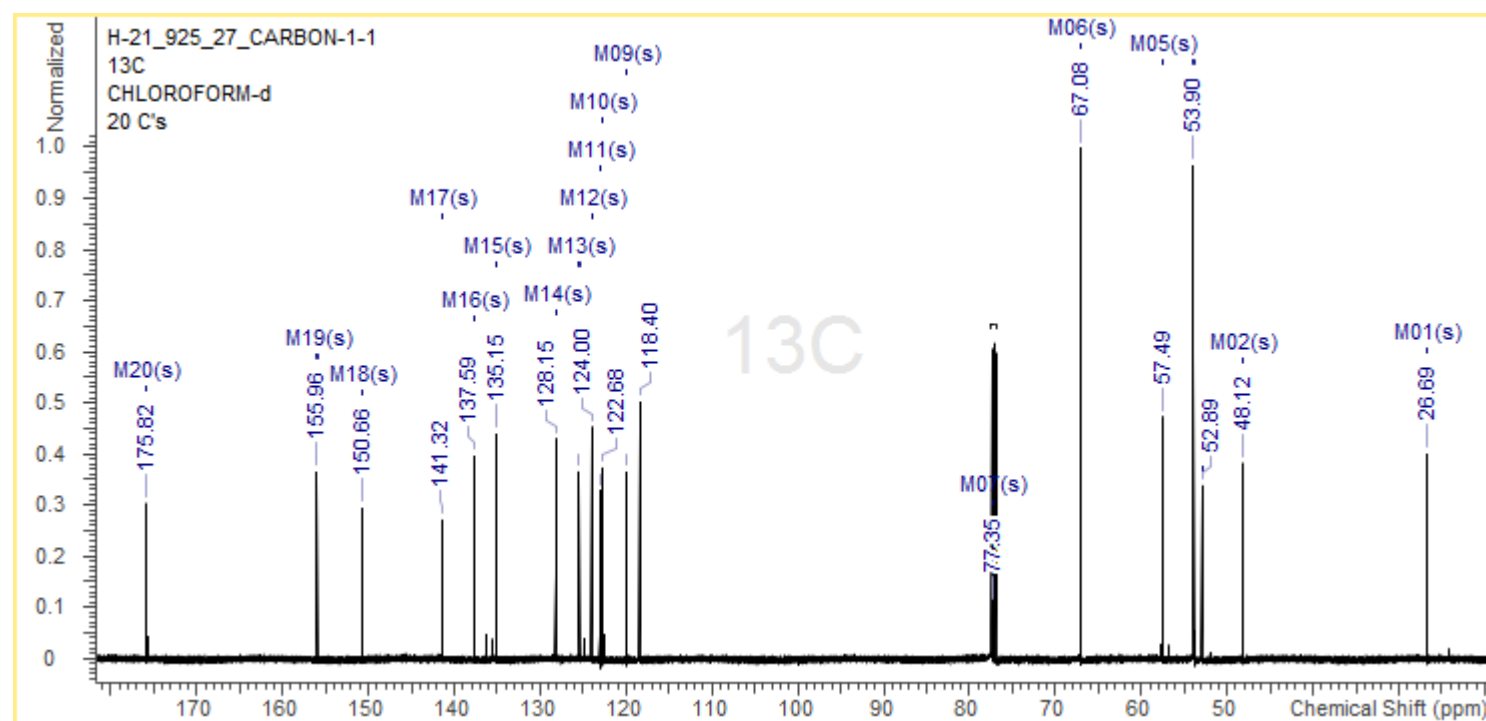
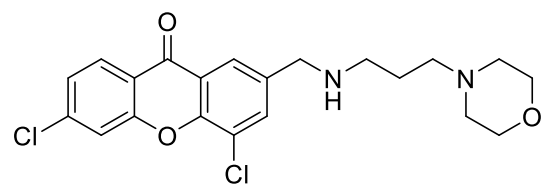
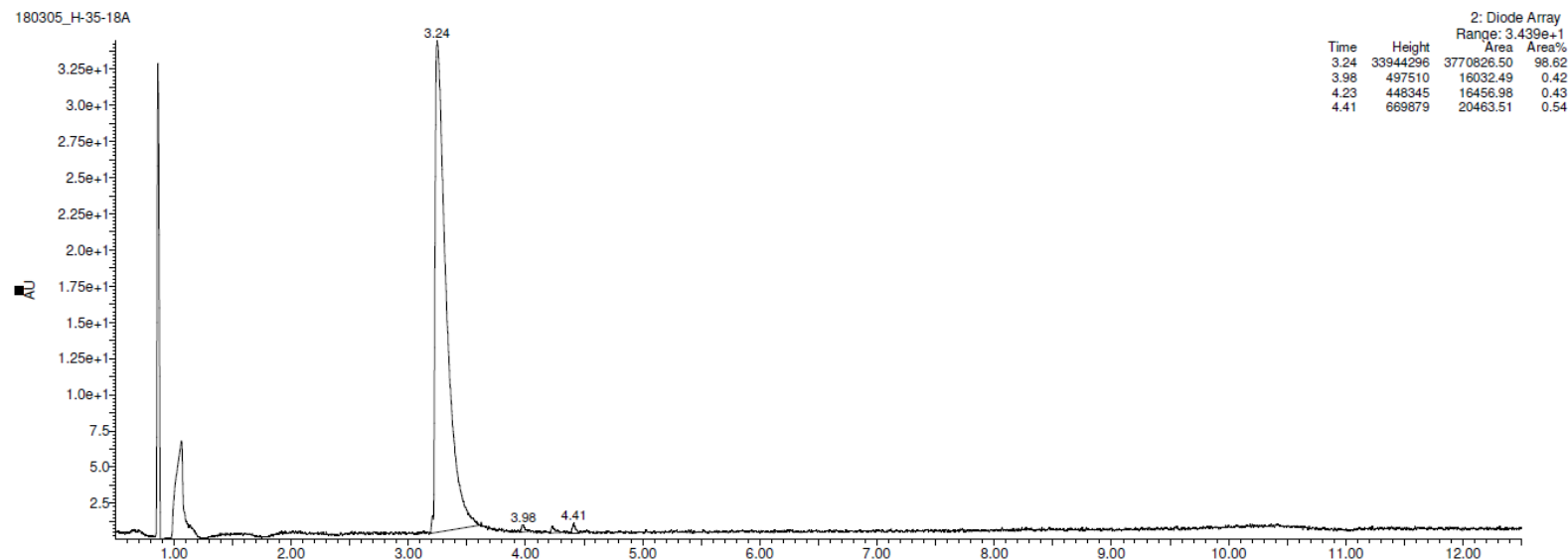
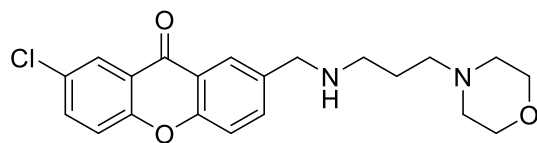


Figure S25

C8



180305\_H-35-18A 345 (3.441)

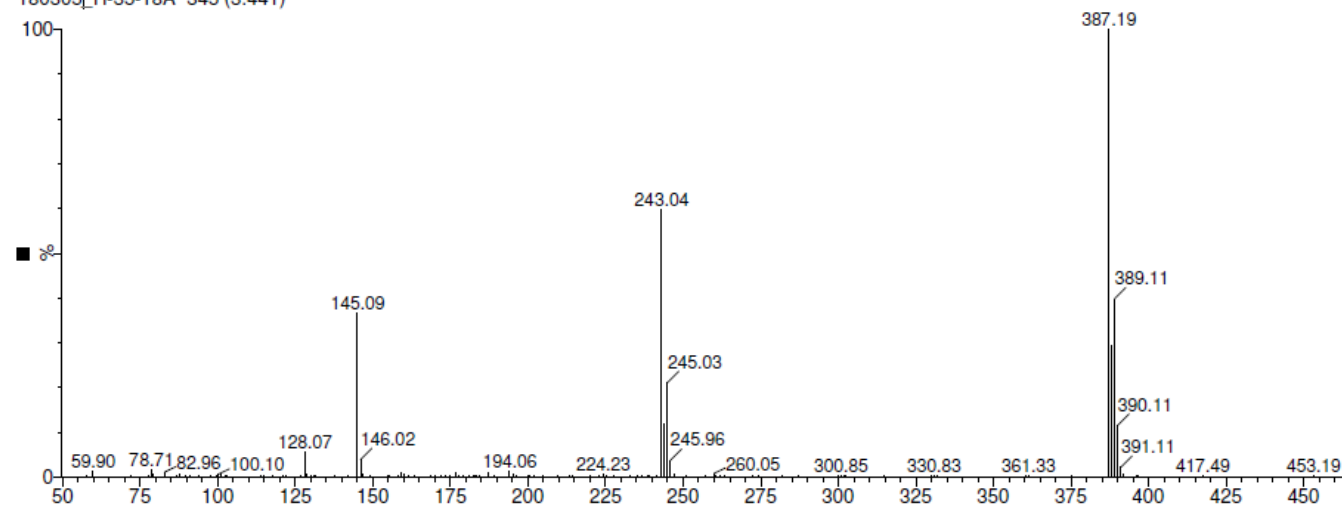


Figure S26

C8

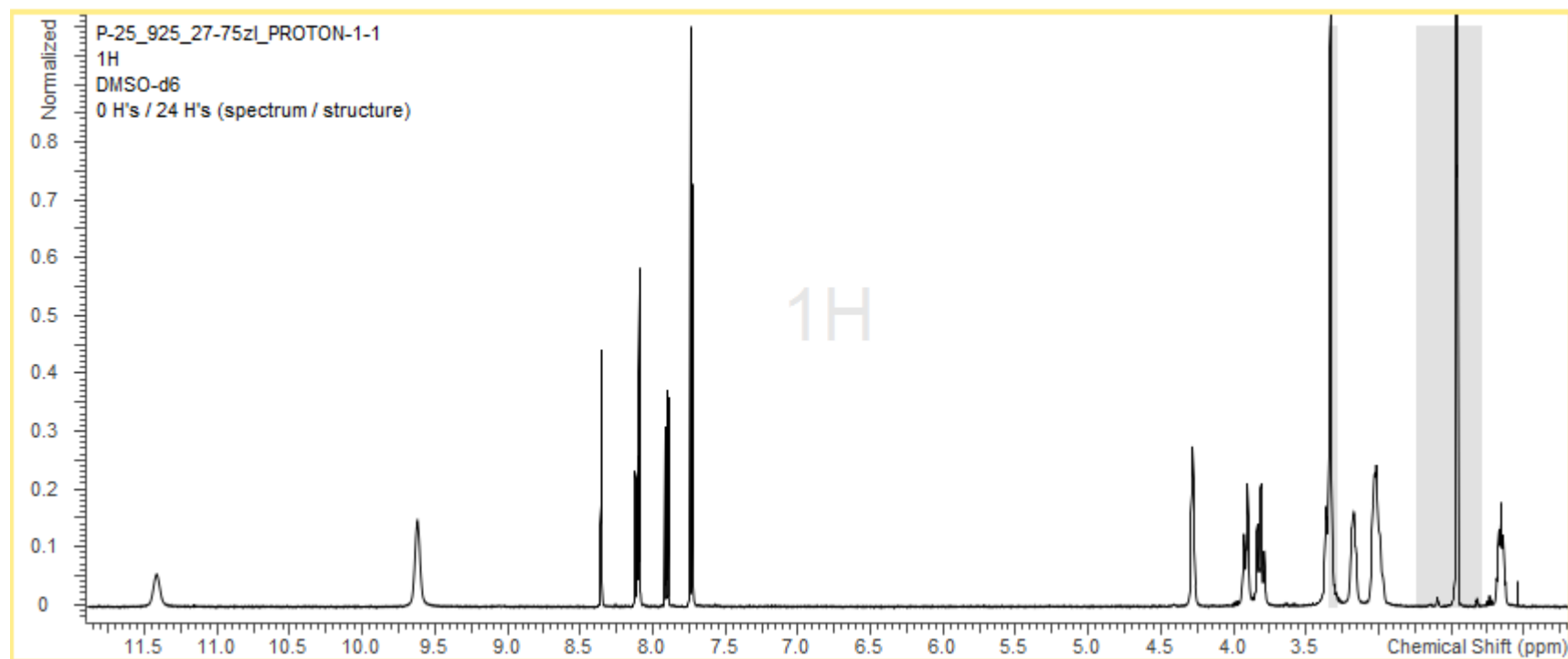
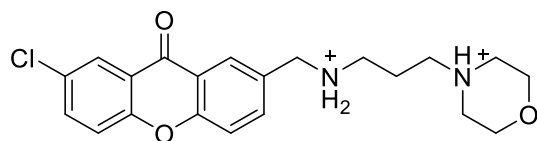


Figure S27

C8

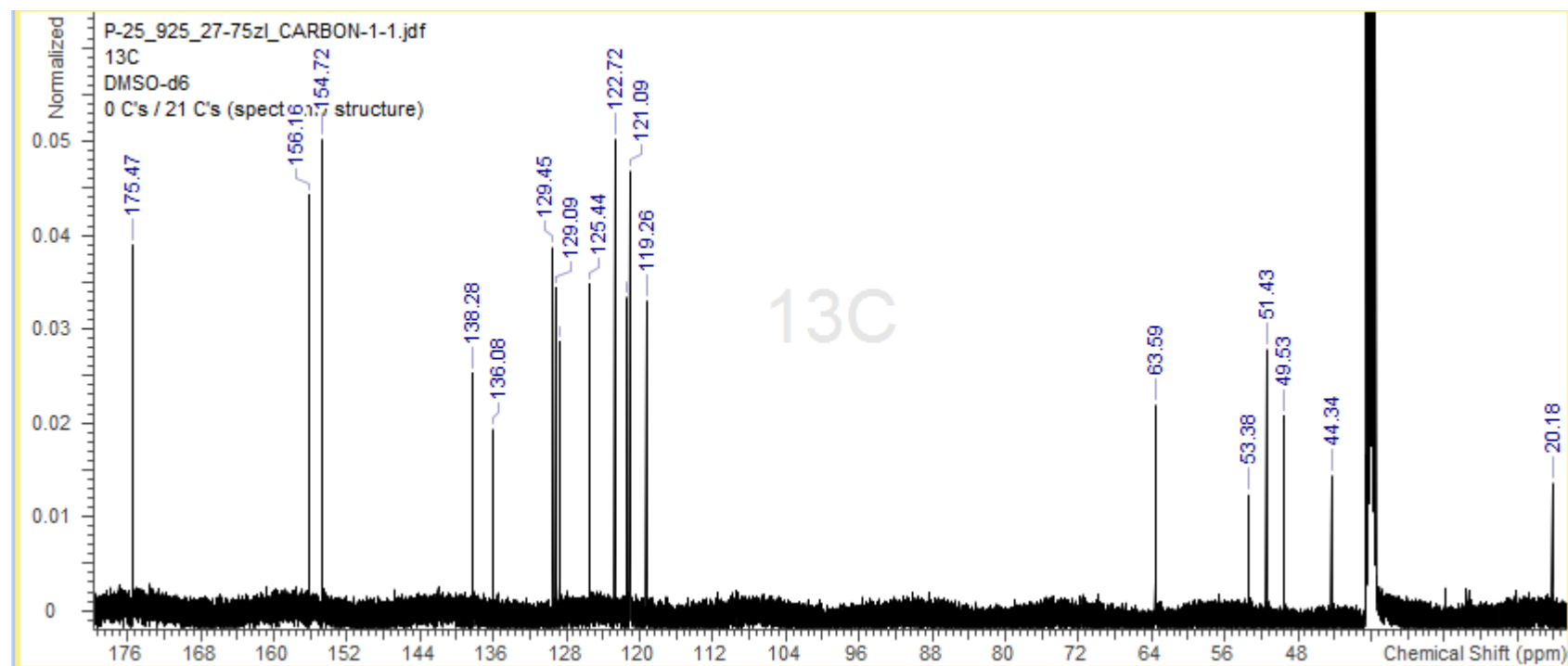
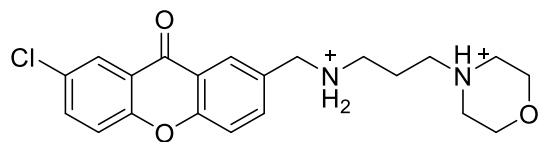


Figure S28

# Table S1

| L929 | IC50 [μM] | IC25 [μM] | GI10 [μM] |
|------|-----------|-----------|-----------|
| CIS  | 121,71    | 78,45     | 52,50     |
| MAG  | 32,48     | 15,26     | 4,92      |
| C8   | 59,64     | 32,50     | 16,21     |
| C7   | 27,57     | 16,61     | 10,04     |

Table S1. L929 growth inhibition (GI) values in 37°C for 24h