

Figure 1

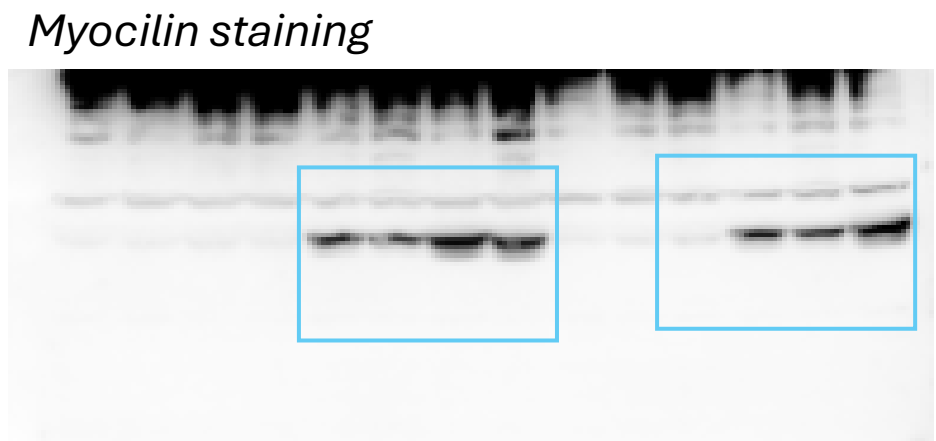
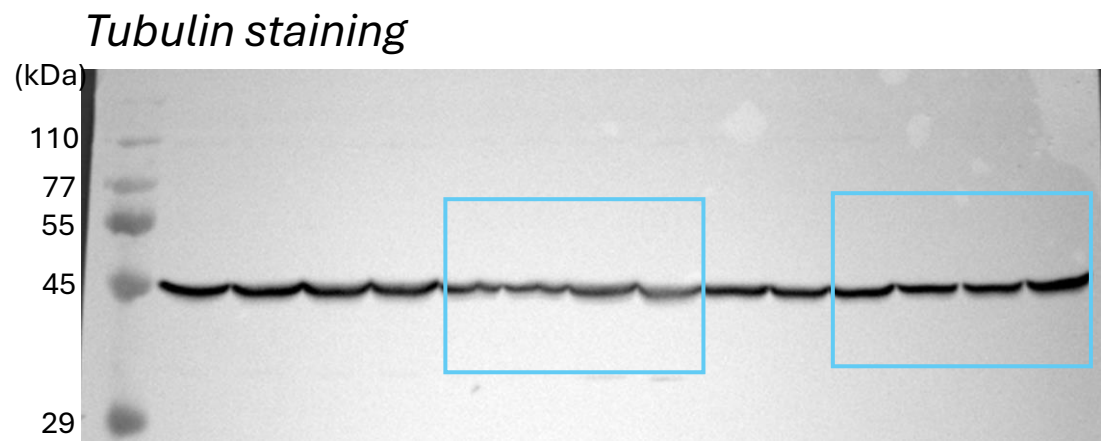


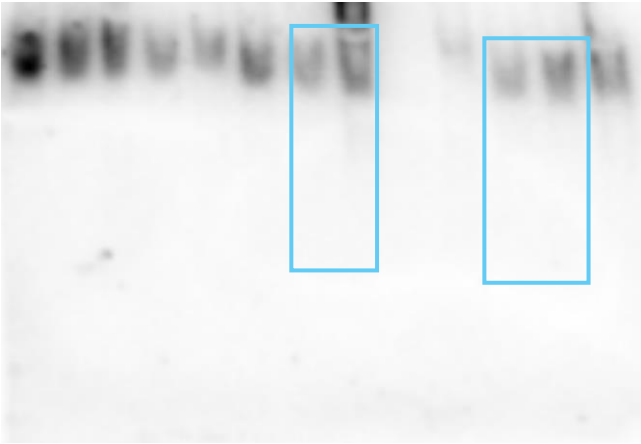
Figure 2 Myocilin and Ub Staining – Native Gel

Myocilin Low exposure

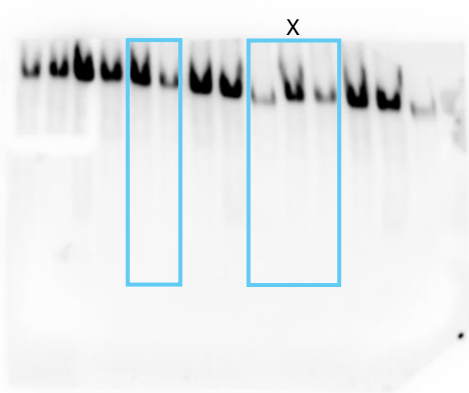


X: identifies a cropped lane

Ubiquitin staining



Myocilin High exposure

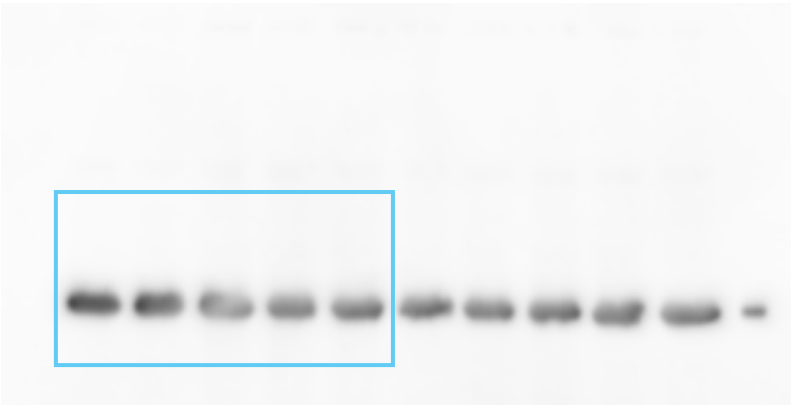


X: identifies a cropped lane

Figure 4



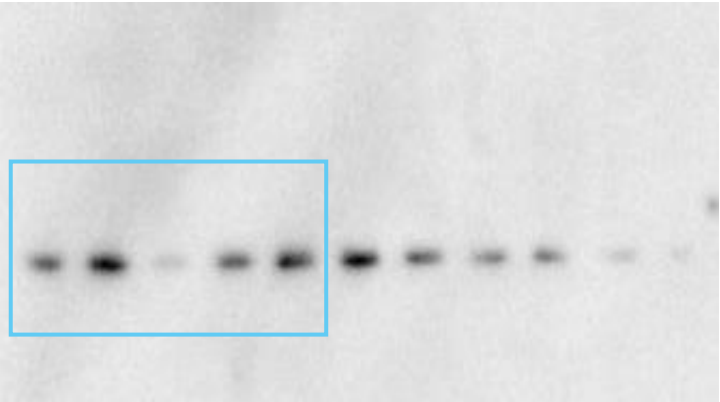
GAPDH staining



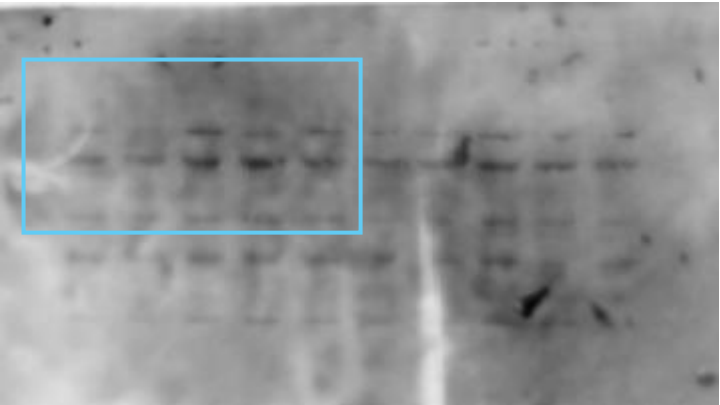
S Ponceau Staining - Supernatant



CHIP/STUB1 staining



Myocilin staining



Myocilin staining - Supernatant



Calnexin staining

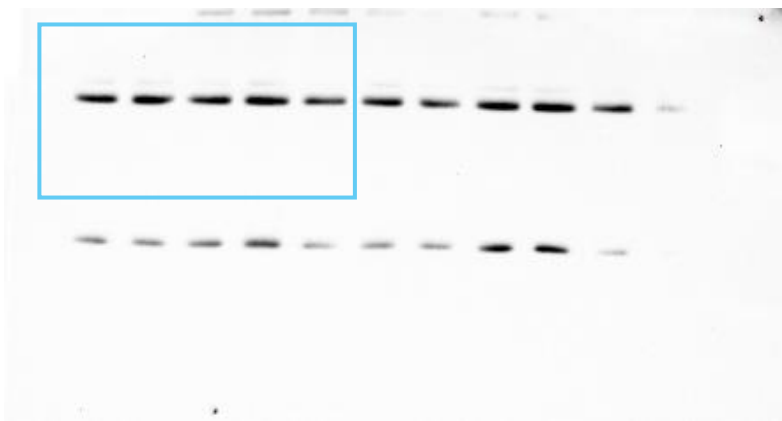
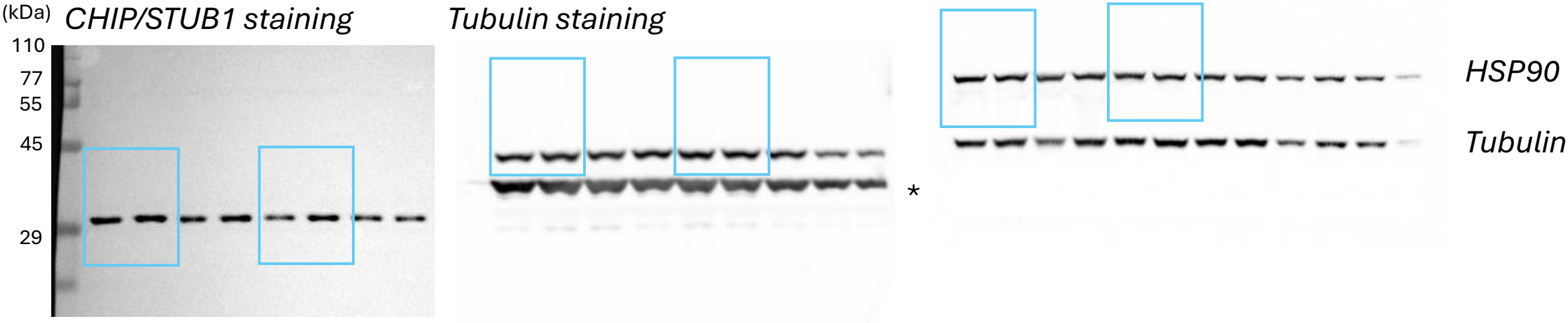


Figure 5



* The band indicated by the asterisk corresponds to beta-actin which was first probed highlighting that saturation was reached