



Correction

Correction: Jin et al. Comparative Evaluation of STEAP1 Targeting Chimeric Antigen Receptors with Different Costimulatory Domains and Spacers. *Int. J. Mol. Sci.* 2024, 25, 586

Yixin Jin¹, Claire Dunn¹, Irene Persiconi¹ , Adam Sike¹, Gjertrud Skorstad², Carole Beck¹
and Jon Amund Kyte^{1,2,3,*}

- ¹ Department of Cancer Immunology, Institute for Cancer Research, Oslo University Hospital, 0379 Oslo, Norway; yixin.jin@rr-research.no (Y.J.); claire.dunn@ous-research.no (C.D.); irene.persiconi@rr-research.no (I.P.); adam.sike@ous-research.no (A.S.); c.a.beck@ous-research.no (C.B.)
² Department of Clinical Cancer Research, Oslo University Hospital, 0424 Oslo, Norway
³ Faculty of Health Sciences, Oslo Metropolitan University, 0130 Oslo, Norway
* Correspondence: jonky@ous-hf.no

In the original publication [1], there was a mistake in Figure 6A. When the IVIS images of two mice in JK10 group day 17 were cropped from the original larger image to fit with the layout, a mistake occurred so that one JK10 mouse was replaced with a JK11 mouse. The analyzed data were correct; as were Figure 6B–D. Only the image of the individual mouse was wrong. The corrected Figure 6 appears below. The authors state that the scientific conclusions are unaffected. This correction was approved by the Academic Editor. The original publication has also been updated.

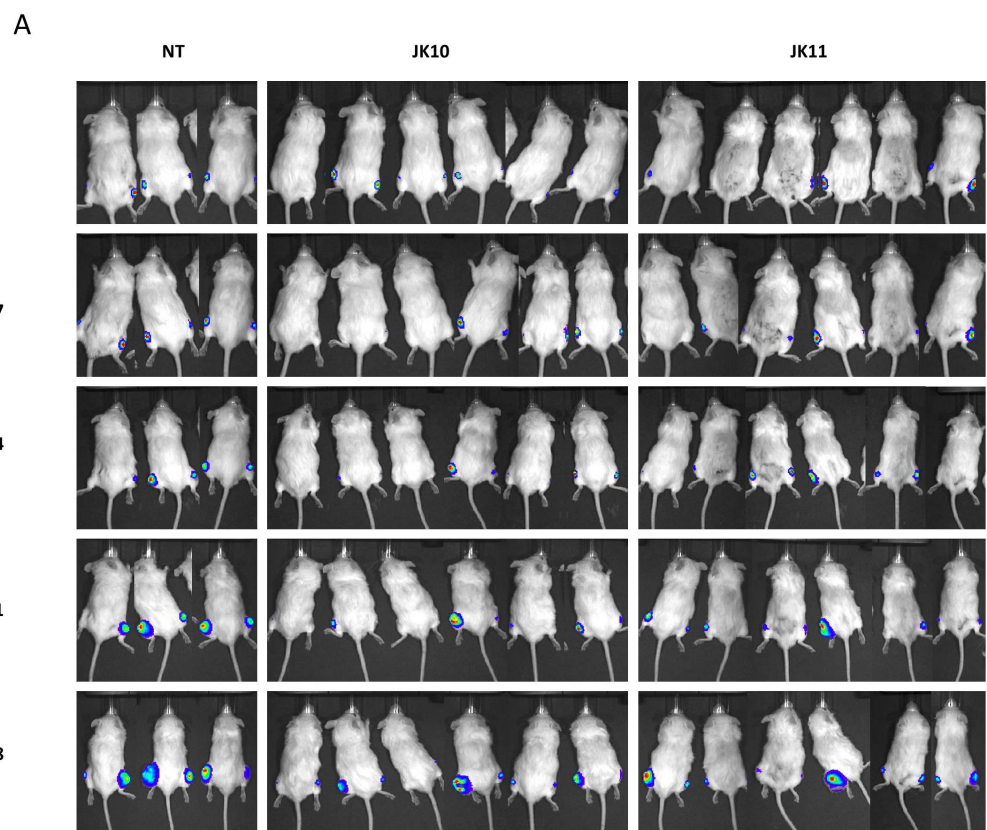


Figure 6. Cont.



Citation: Jin, Y.; Dunn, C.; Persiconi, I.; Sike, A.; Skorstad, G.; Beck, C.; Kyte, J.A. Correction: Jin et al. Comparative Evaluation of STEAP1 Targeting Chimeric Antigen Receptors with Different Costimulatory Domains and Spacers. *Int. J. Mol. Sci.* 2024, 25, 586. *Int. J. Mol. Sci.* 2024, 25, 10024. <https://doi.org/10.3390/ijms251810024>

Received: 5 September 2024

Accepted: 5 September 2024

Published: 18 September 2024



Copyright: © 2024 by the authors. Licensee MDPI, Basel, Switzerland. This article is an open access article distributed under the terms and conditions of the Creative Commons Attribution (CC BY) license (<https://creativecommons.org/licenses/by/4.0/>).

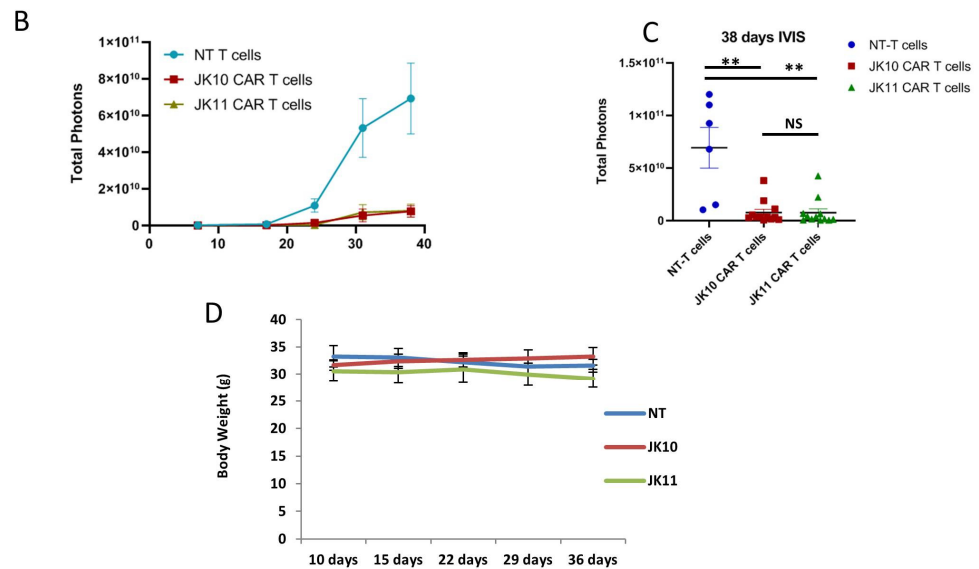


Figure 6. CD28 and 4-1BB CAR T cells inhibit tumor growth in vivo. (A) Bioluminescence images of individual mice at multiple time points in a subcutaneous tumor model. NSG mice were engrafted subcutaneously on both hind legs with 2×10^6 luciferase expressing 22Rv1 prostate cancer cells. On days 10 and 17, the mice were treated with 1×10^7 non-transduced (NT) T cells ($N_{\text{tumor}} = 6$) or CD28 CAR T cells ($N_{\text{tumor}} = 12$) and 4-1BB CAR T cells ($N_{\text{tumor}} = 12$) by intravenous injection. Bioluminescence signals of individual mice were measured at indicated time points (days after tumor engraftment). (B) Tumor growth is measured once a week by bioluminescence IVIS imaging. The data are presented as the mean \pm SEM of tumors in each group. (C) Bioluminescence signals (mean \pm SEM) 38 days after tumor engraftment. Statistical analyses in (B,C) were performed with the Mann–Whitney U test. NS (not significant), ** $p < 0.001$. (D) The body weight of the mice was measured once per week after the first treatment with T cells on day 10. Error bars indicate SD.

Reference

- Jin, Y.; Dunn, C.; Persiconi, I.; Sike, A.; Skorstad, G.; Beck, C.; Kyte, J.A. Comparative Evaluation of STEAP1 Targeting Chimeric Antigen Receptors with Different Costimulatory Domains and Spacers. *Int. J. Mol. Sci.* **2024**, *25*, 586. [[CrossRef](#)] [[PubMed](#)]

Disclaimer/Publisher’s Note: The statements, opinions and data contained in all publications are solely those of the individual author(s) and contributor(s) and not of MDPI and/or the editor(s). MDPI and/or the editor(s) disclaim responsibility for any injury to people or property resulting from any ideas, methods, instructions or products referred to in the content.