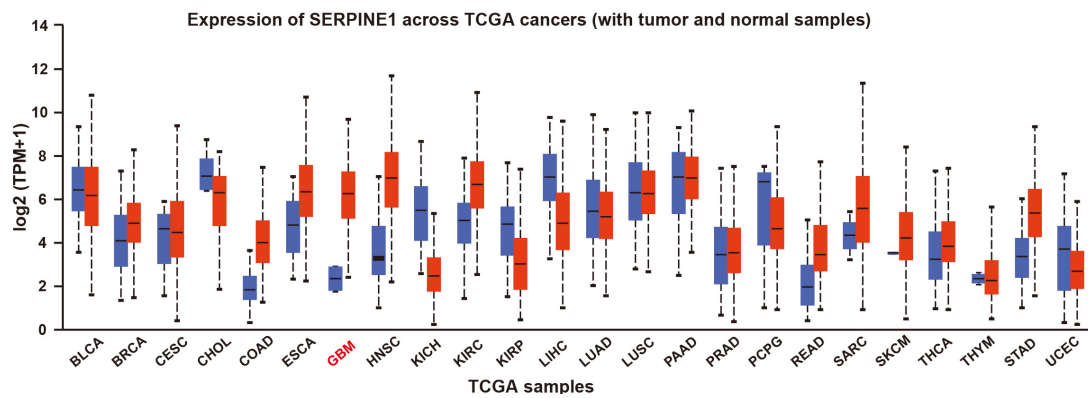
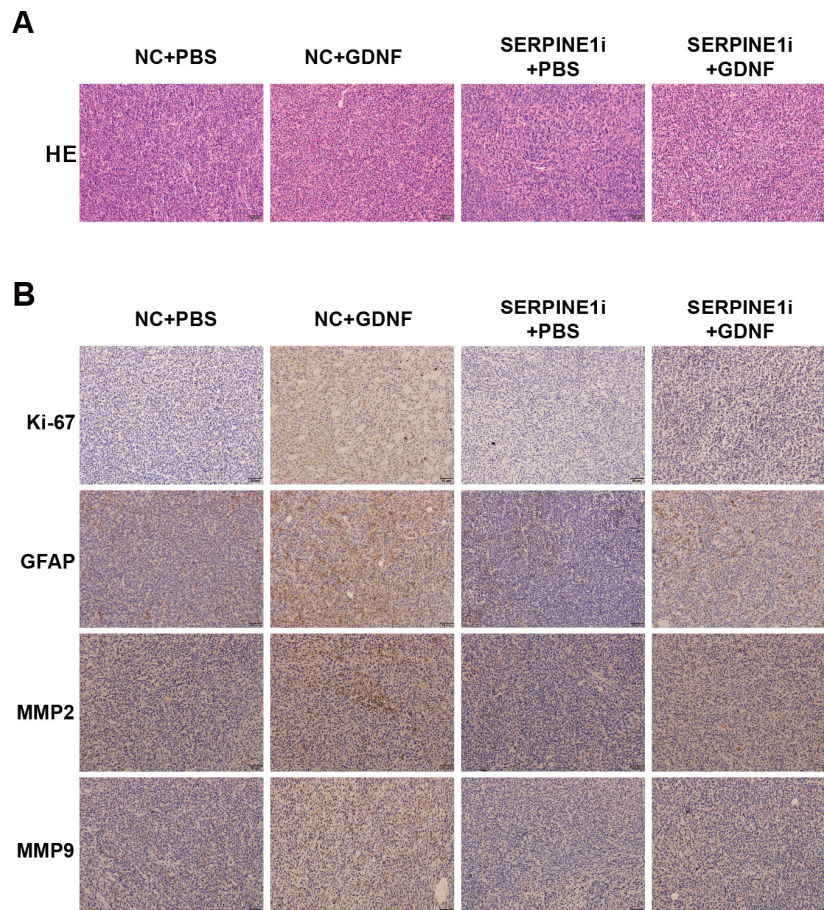


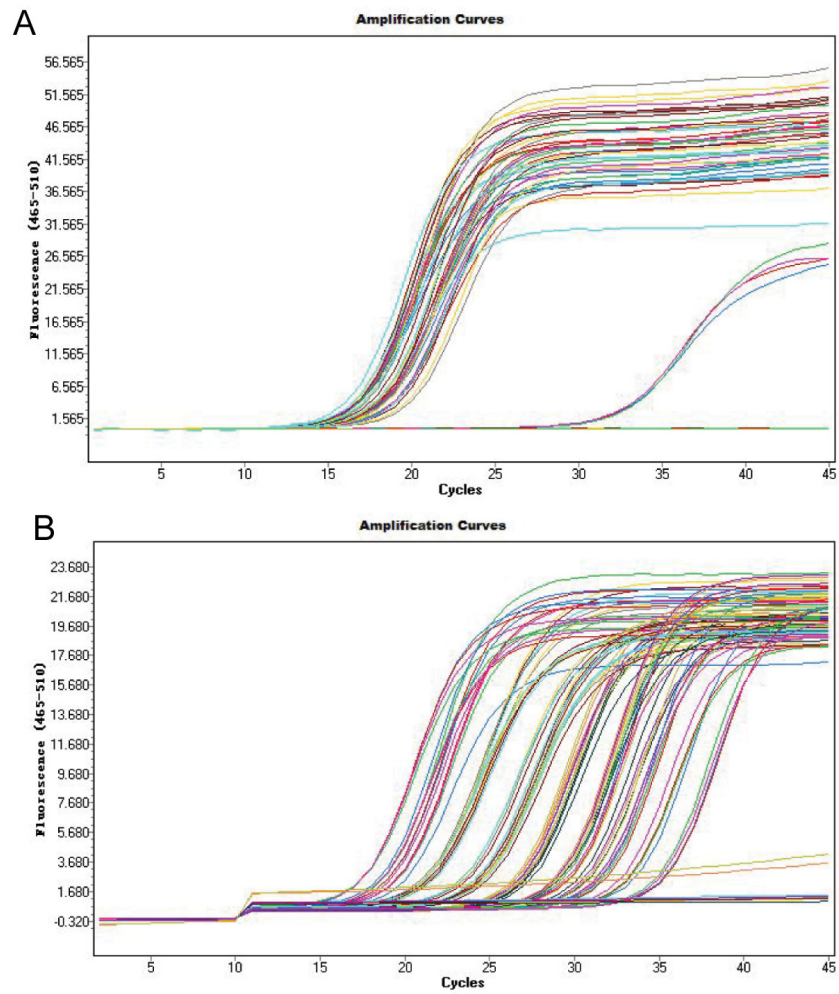
## Supplementary Figures



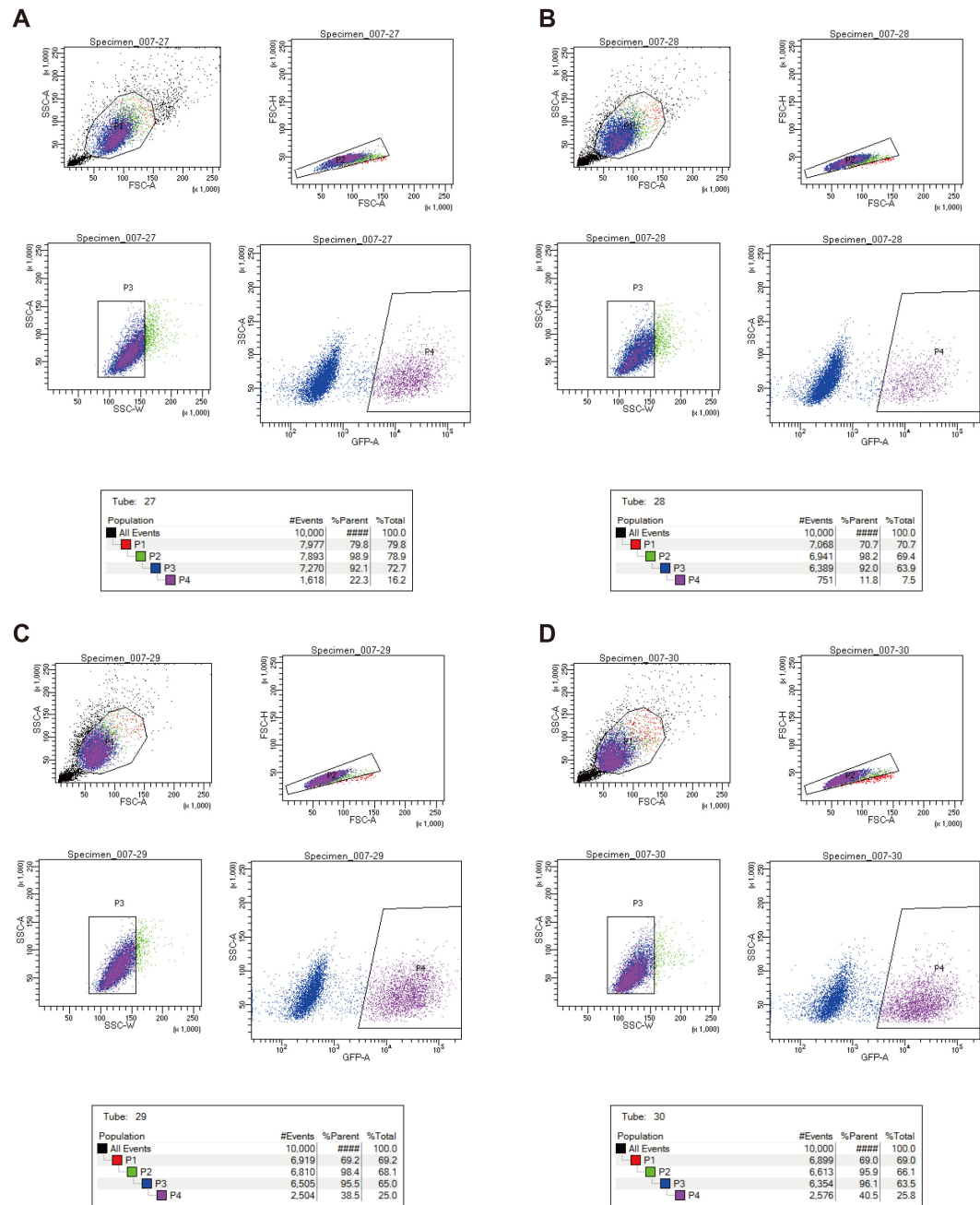
**Figure S1.** The mRNA levels of SERPINE1 were analyzed between multiple human tumors and corresponding normal tissues using UALCAN database.



**Figure S2.** GDNF accelerates GBM growth *in vivo*. (A) HE staining of tumor tissues. (B) Immunohistochemistry was performed to detect the levels of ki-67, GFAP, MMP2 and MMP9. Bar = 50  $\mu$ m. n = 5.



**Figure S3.** The amplification curves of SERPINE1 primers in U251 (A) and C6 (B) cells.



**Figure S4.** C6 cells were sorted by FACS based on SERPINE1 knockdown. (A) Negative control group. (B) RNAi-1 group. (C) RNAi-2 group. (D) RNAi-3 group.

## Supplementary Tables

**Table S1: Primer sequences for qRT-PCR.**

Gene	Forward sequence	Reverse sequence
Human	5'-GCGTCTTCCTCCACAGCCATTC-3'	5'-TGTCTCTGTTGGATTGTGCCGAAC-3'
Rat SERPINE1	5'-GCGTCTTCCTCCACAGCCATTC-3'	5'-TGTCTCTGTTGGATTGTGCCGAAC-3'
Human GAPDH	5'-AGAAGGCTGGGGCTCATTTG-3'	5'-AGGGGCCATCCACAGTCTTC-3'
Rat GAPDH	5'-CAGTGCCAGCCTCGTCTCAT-3'	5'-AGGGGCCATCCACAGTCTTC-3'

**Table S2: siRNA sequences.**

siRNA name	Species	Sequences
si-SERPINE1-#1	Human	Sense: CCCUCCGGCAUCUGUACAATT
		Antisense: UUGUACAGAUGCCGGAGGGTT
si-SERPINE1-#2	Human	Sense: CCGGAGCACGGUCAAGCAATT
		Antisense: UUGCUUGACCGUGCUCCGGTT
si-SERPINE1-#3	Human	Sense: GCCACUGGAAAGGCAACAUTT
		Antisense: AUGUUGCCUUUCCAGUGGGCTT
si-SMAD2	Rat	Sense: GCCGAGUGCCUAAGUGAUATT
		Antisense: UAUCACUUAGGCACUCGGCTT
si-SMAD3	Rat	Sense: GCUUUGAGGCUGUCUACCATT
		Antisense: UGGUAGACAGCCUCAAAGCTT