

Supplemental Materials to the paper

# Serum-Free Media Formulation Using Marine Microalgae Extracts and Growth Factor Cocktails for Madin-Darby canine kidney and Vero Cell Cultures

Areumi Park <sup>1</sup>, Yeon-Ji Lee <sup>1</sup>, Eunyoung Jo <sup>1</sup>, Gun-Hoo Park <sup>1</sup>, Seong-Yeong Heo <sup>1,2</sup>, Eun-Jeong Koh <sup>1</sup>, Seung-Hong Lee <sup>3</sup>, Seon-Heui Cha <sup>4</sup>, and Soo-Jin Heo <sup>1,2,\*</sup>

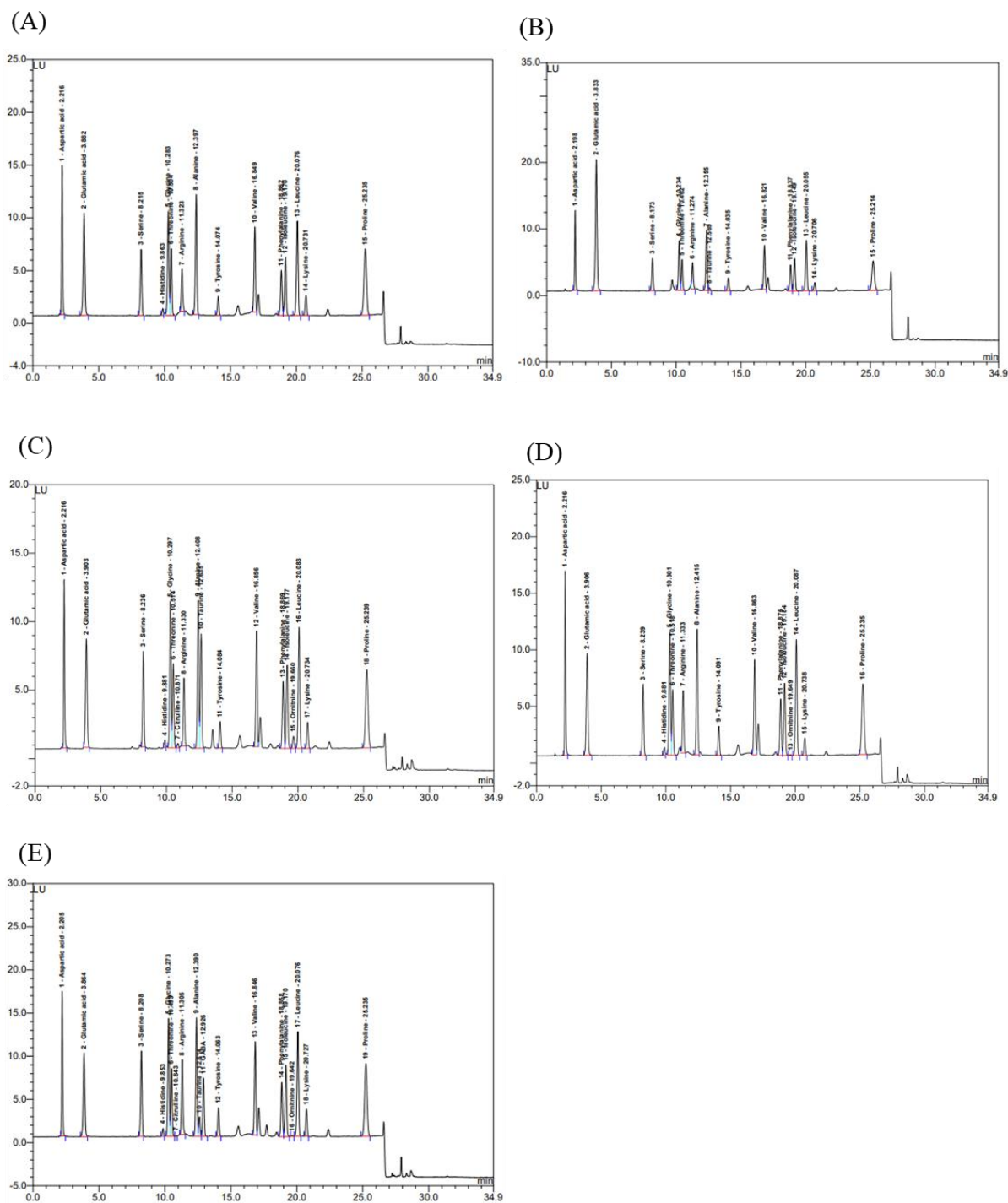
<sup>1</sup> Jeju Bio Research Center, Korea Institute of Ocean Science and Technology (KIOST), Jeju 63349, Republic of Korea; areumi1001@kiost.ac.kr (A.P.); leeyj0409@kiost.ac.kr (Y.-J.L.); jey8574@kiost.ac.kr (E.J.); gunhoopark@kiost.ac.kr (G.-H.P.); syheo@kiost.ac.kr (S.-Y.H.); kej763@kiost.ac.kr (E.-J.K.)

<sup>2</sup> Department of Marine Technology & Convergence Engineering (Marine Biotechnology), University of Science and Technology (UST), Daejeon 34113, Republic of Korea

<sup>3</sup> Department of Pharmaceutical Engineering, Soonchunhyang University, Asan 31538, Republic of Korea; shlee80@sch.ac.kr

<sup>4</sup> Department of Marine Bio and Medical Sciences, Hanseo University, Seosan-si 32158, Republic of Korea; sunnycha@hanseo.ac.kr

\* Correspondence: sjheo@kiost.ac.kr



**Figure S1.** The amino acid HPLC chromatogram of microalgae extract. (A) *Spirulina platensis*, (B) *Dunaliella salina*, (C) *Haematococcus pluvialis*, (D) *Nannochloropsis salina*, (E) *Tetraselmis* sp