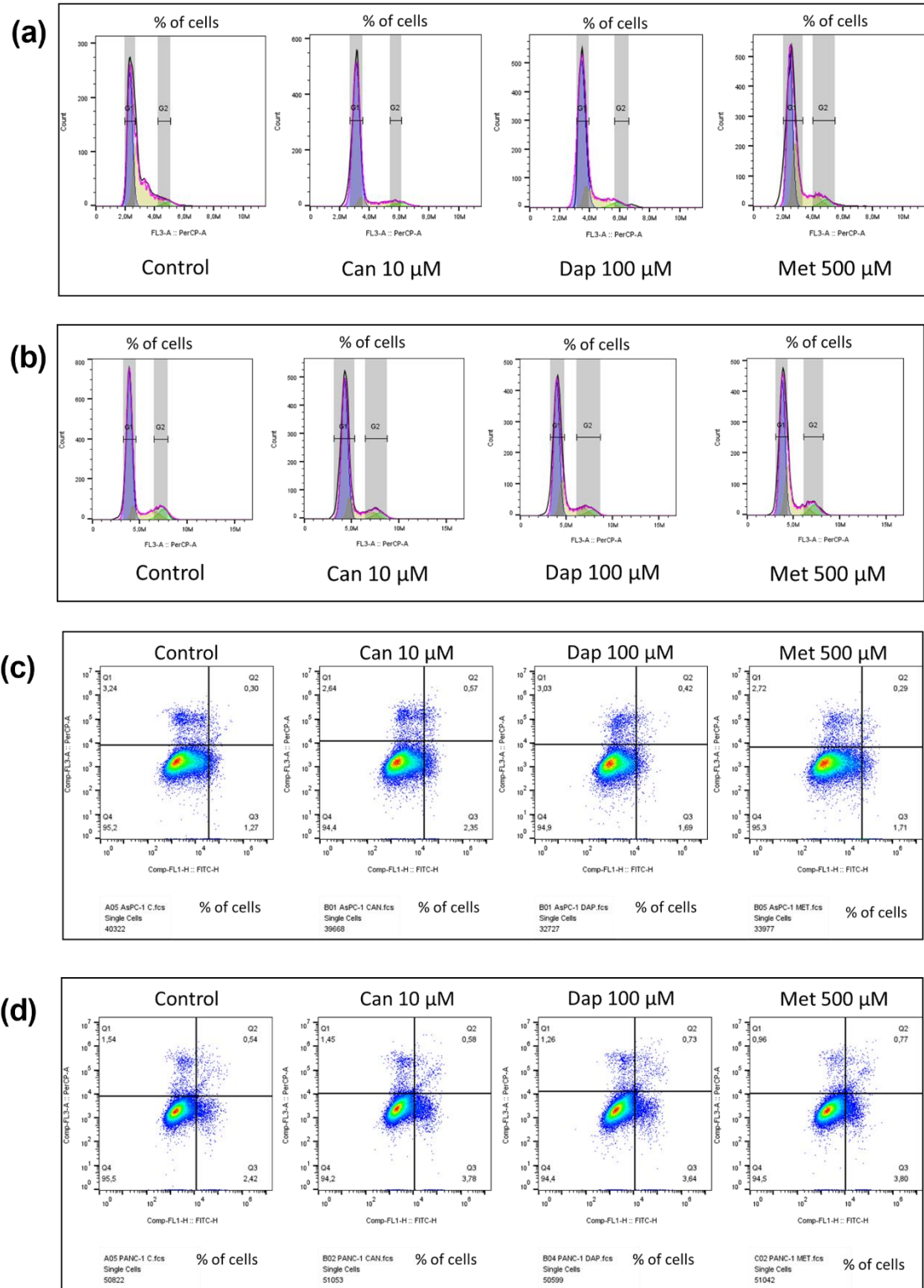
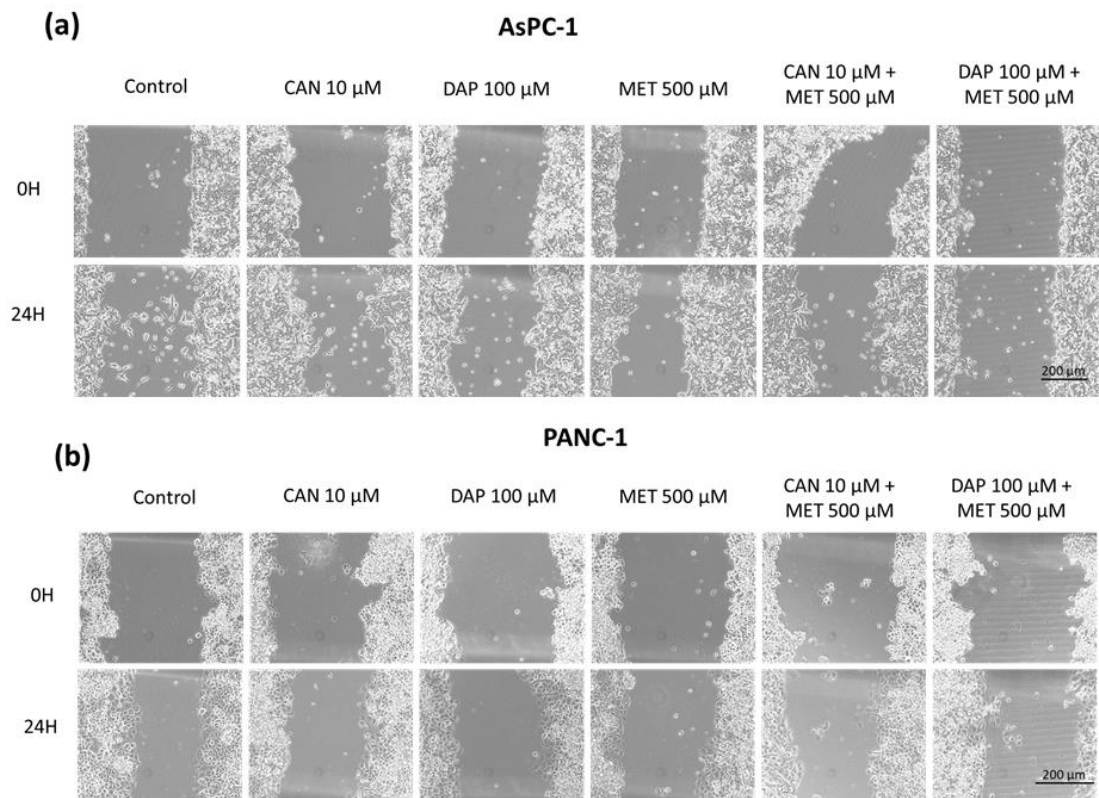


**Figure S1.** Effect of treatments with canagliflozin (Can), dapagliflozin (Dap), metformin (Met) and Cisplatin (Cis) on migration ability of **(a)** AsPC-1 and **(b)** PANC-1 cell lines. Shown are the representative images obtained with each condition (magnification 10 X).

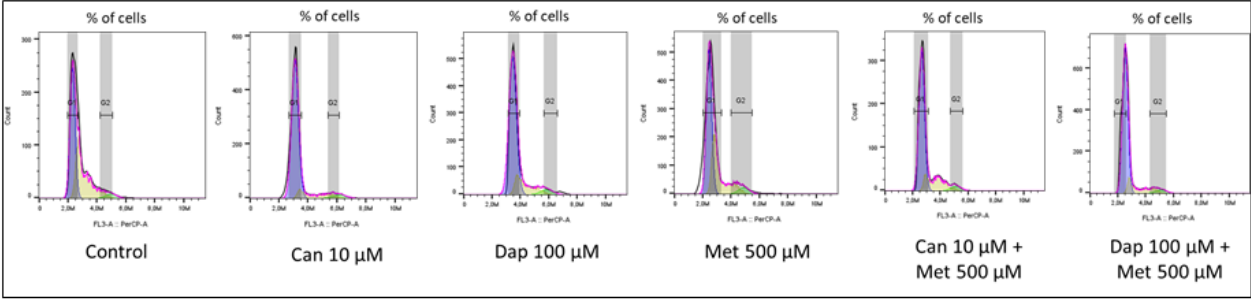


**Figure S2.** Representative plots of the effect of treatments with canagliflozin (Can), dapagliflozin (Dap) and metformin (Met), on cell cycle in the (a) AsPC-1 and (b) PANC-1 cell lines and on apoptosis rates in the (c) AsPC-1 and (d) PANC-1 cell lines.

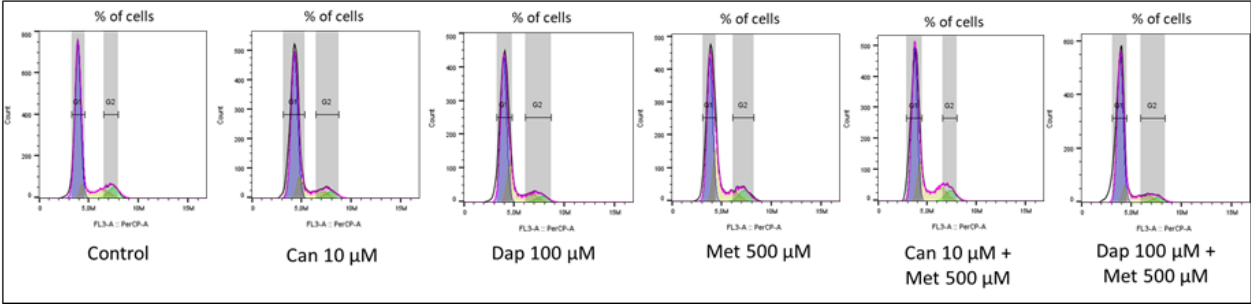


**Figure S3.** Effects of treatments with Canagliflozin (Can), Dapagliflozin (Dap) and Metformin (Met), separately or in combination, on the migration of the **(a)** AsPC-1 and **(b)** PANC-1 cell lines. Shown are the representative images obtained with each condition (magnification 10 X).

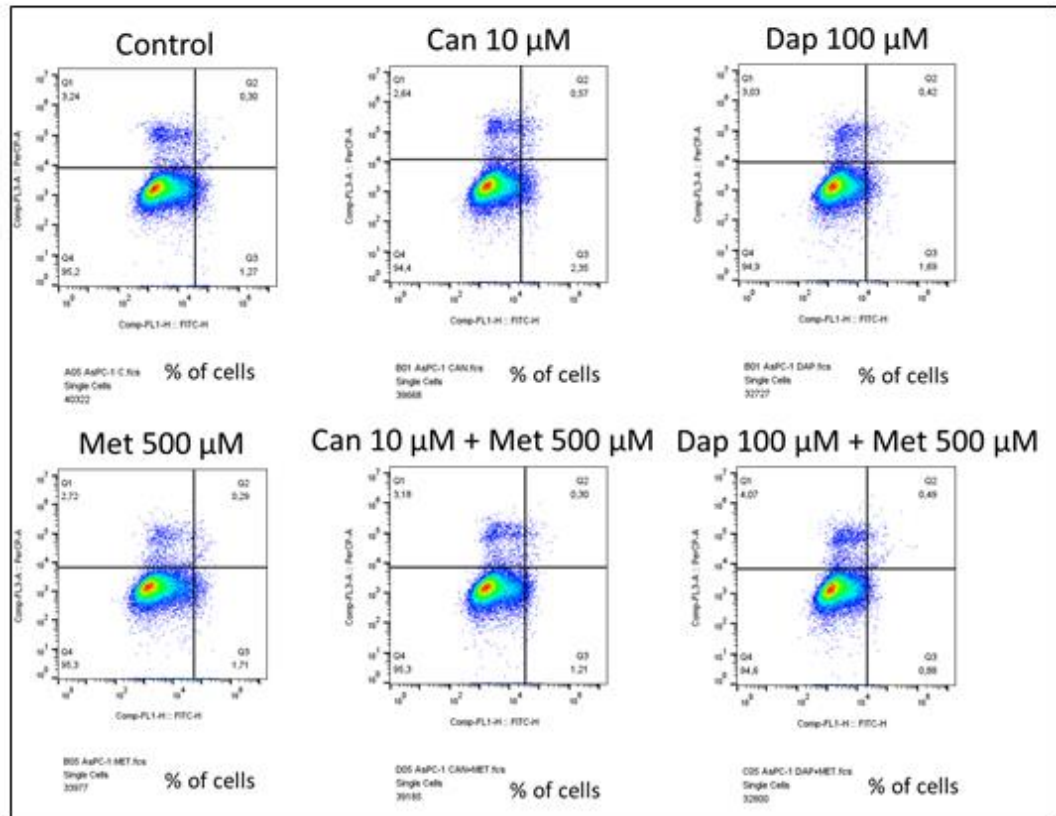
a)



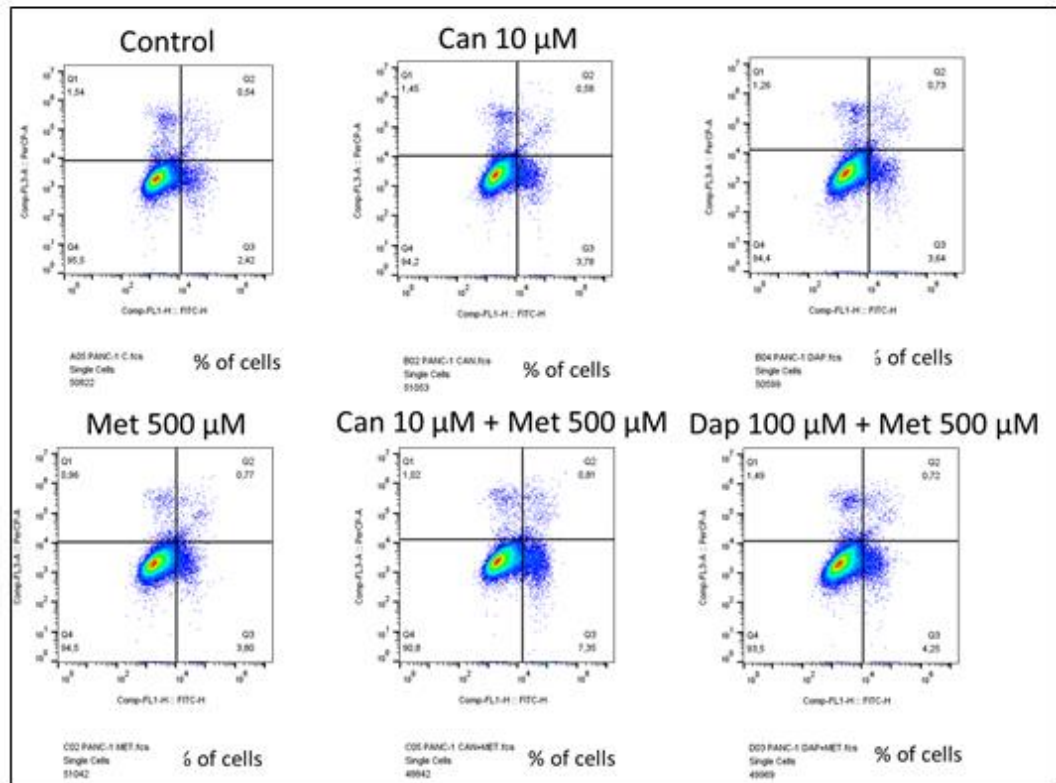
b)



c)



d)



**Figure S4.** Representative plots of the effect of treatments with canagliflozin (Can), dapagliflozin (Dap) and metformin (Met), separately or in combination, on cell cycle in the (a)

AsPC-1 and (b) PANC-1 cell lines and on apoptosis rates in the (c) AsPC-1 and (d) PANC-1 cell lines.