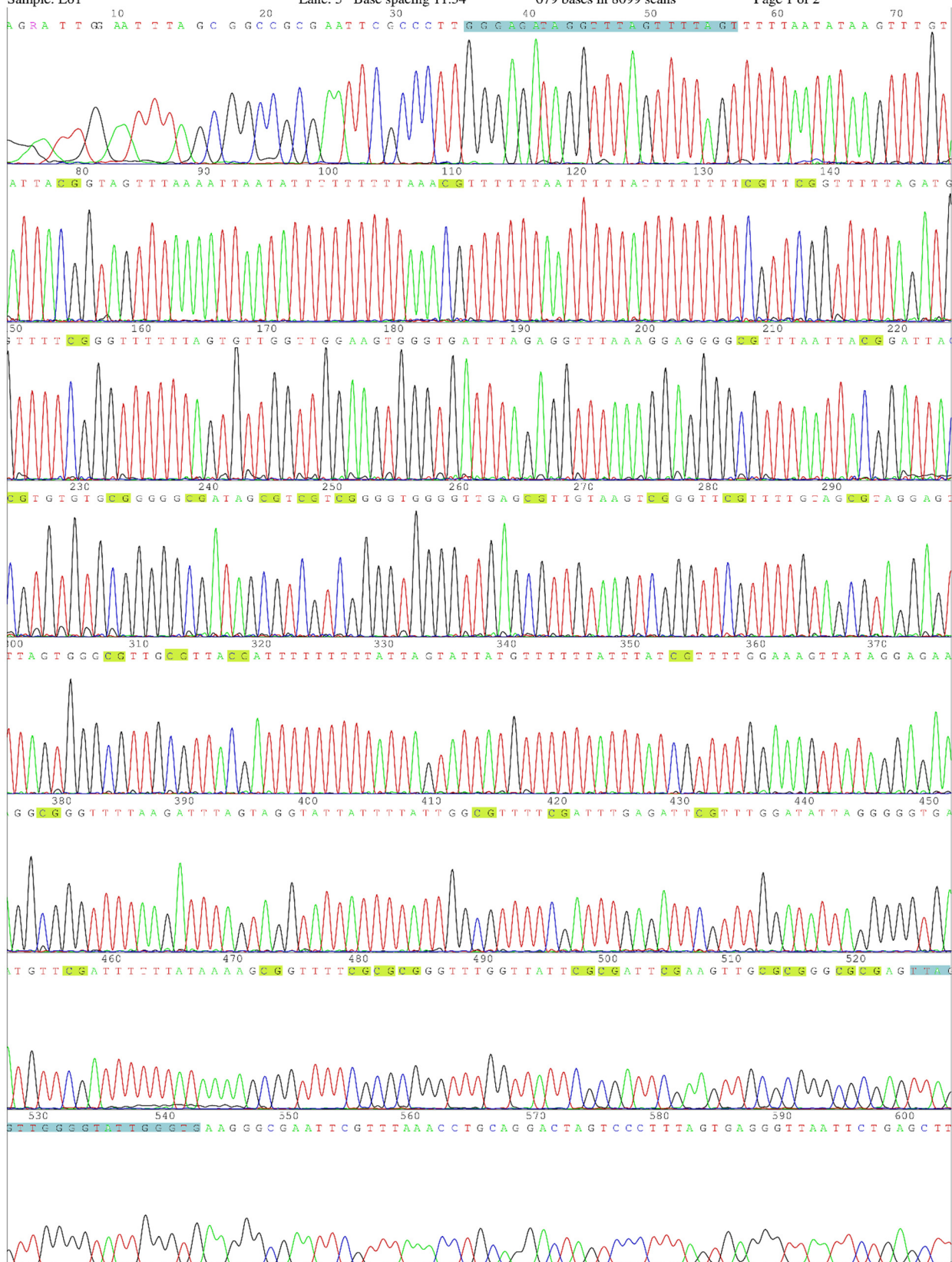


Supplementary figures

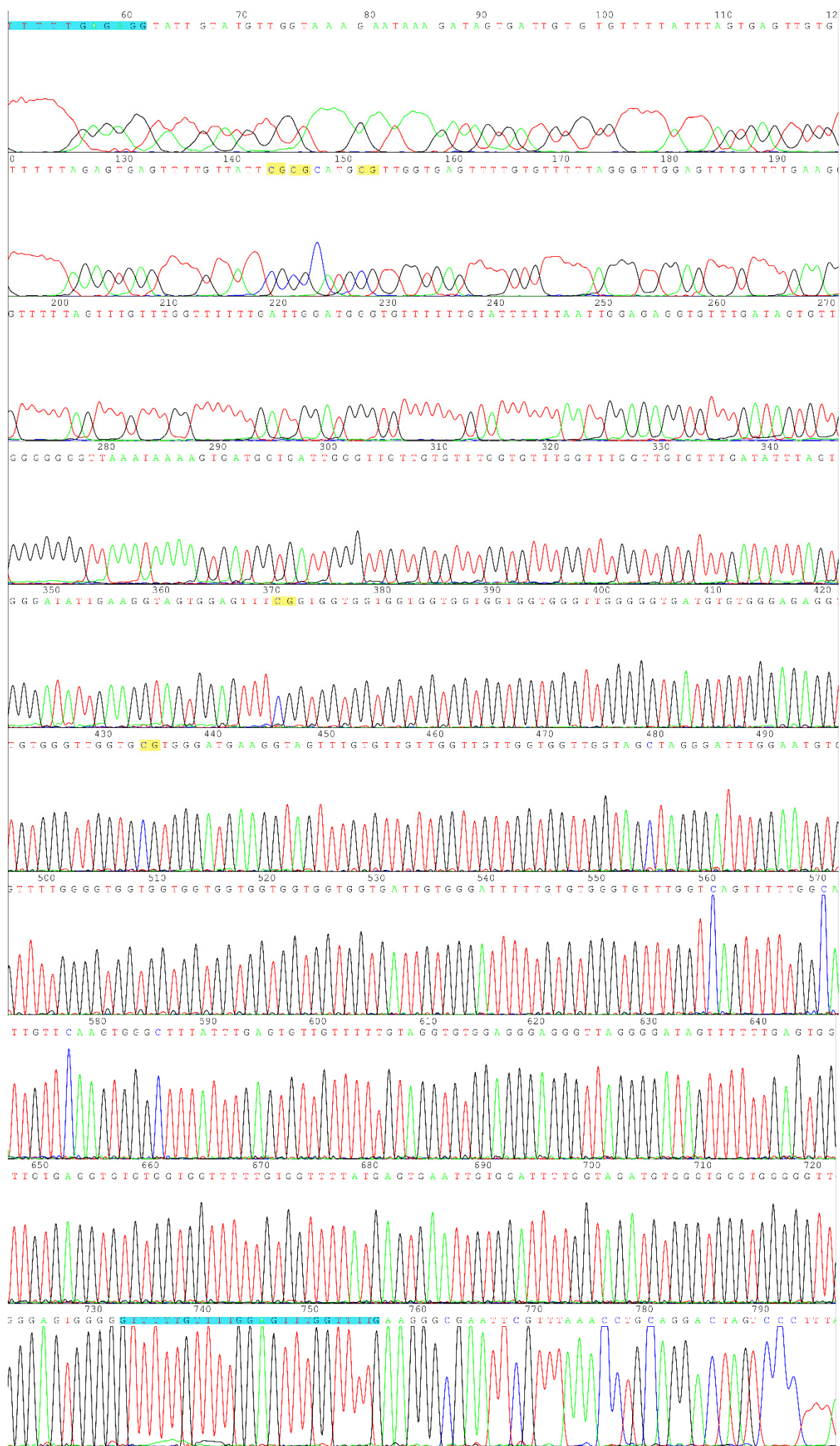
Sequencing of DM miniprepplasmid DNA used for gene promoter methylation analysis. Primers used to amplify fragments are highlighted in blue. Detected CpGs are highlighted in yellow.

Supplementary Figure S 1. Representative chromatogram of the *Cebpa* promoter showing methylation of 37 CpGs detected in the *Cebpa* promoter of undifferentiated Δ S/N cells.



[illegible]

Supplementary Figure S 3. Representative chromatogram of the 722 bp *Ezh2* promoter showing CpG methylation detected in differentiated Δ S/N cells.



Supplementary Figure S 4. Representative chromatogram of the 696 bp *Mll4* promoter showing CpG methylation detected in differentiated Δ S/N cells.

