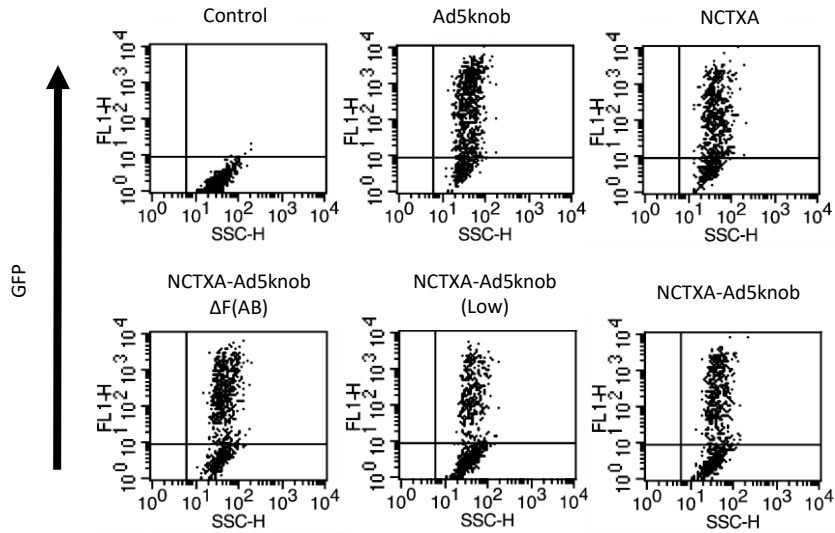


A



B

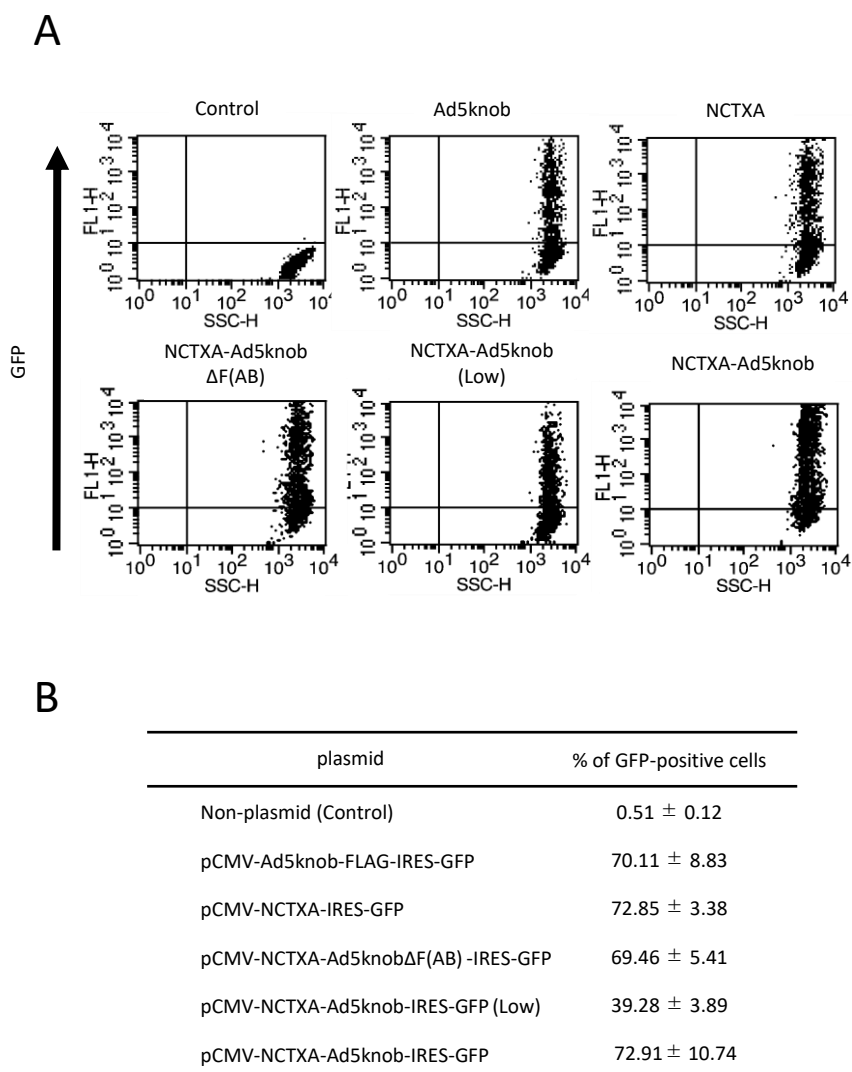
plasmid	% of GFP-positive cells
Non-plasmid (Control)	0.24 \pm 0.08
pCMV-Ad5knob-FLAG-IRES-GFP	75.24 \pm 8.43
pCMV-NCTXA-IRES-GFP	66.21 \pm 5.63
pCMV-NCTXA-Ad5knob $\Delta F(AB)$ -IRES-GFP	62.97 \pm 6.61
pCMV-NCTXA-Ad5knob-IRES-GFP (Low)	35.20 \pm 6.29
pCMV-NCTXA-Ad5knob-IRES-GFP	54.91 \pm 3.89

Supplementary Figure S1.

The GFP-positive rate of 293T cells transfected with the plasmid

(A) The 293T cells were transfected with either plasmids using the calcium phosphate method. After one day, the cells were suspended in 5 mM EDTA/PBS. The cells were washed twice with PBS and the GFP expression percentage in the transfected B16B16-hCAR cells was analyzed using flow-cytometry.

(B) The GFP positive rate calculated from flow-cytometry analysis.



Supplementary Figure S2.

The GFP-positive rate of B16BL6-hCAR cells transfected with the plasmid

(A) The B16BL6-hCAR cells were transfected with either plasmids using Lipofectamine 2000 (ThermoFisher Co. Ltd.). After one day, the cells were suspended in 5 mM EDTA/PBS. The cells were washed twice with PBS and the GFP expression percentage in the transfected B16B16-hCAR cells was analyzed using flow-cytometry.

(B) The GFP positive rate calculated from flow-cytometry analysis.