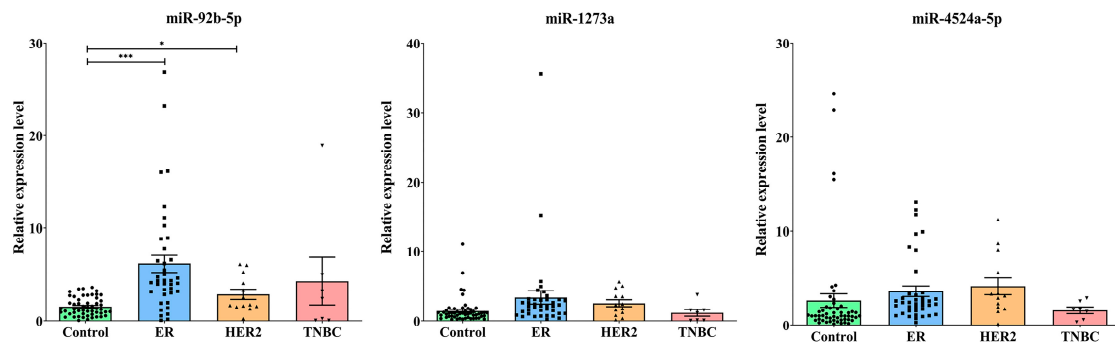


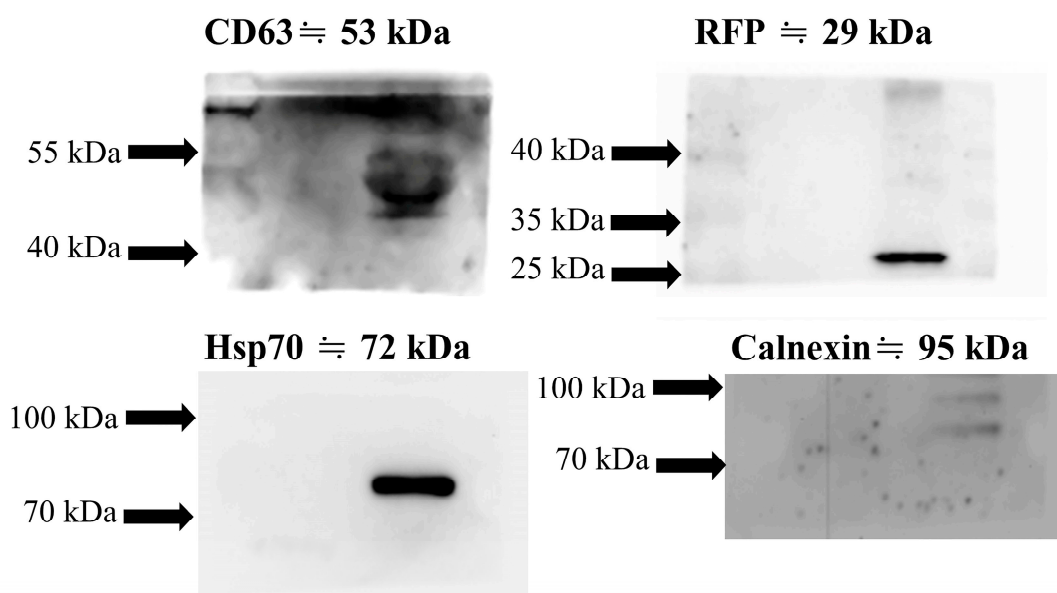
Supplementary Materials:



Supplementary Figure S1. Among the three candidate exosomal miRNAs, miR-92b-5p exhibit significant increase in ER and HER2 subtypes patients with breast cancer compared with that of controls. The p -value is estimated using a two-tailed t-test, and a p value of less than 0.05 (denoted as * $p < 0.05$, and *** $p < 0.001$) denotes statistical significance.

Original Western Blot Figures

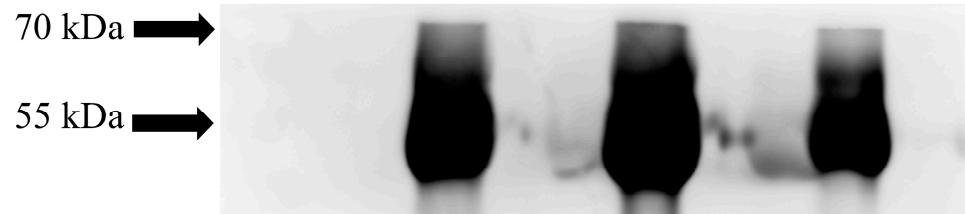
Thermo Scientific
PageRuler Prestained Protein Ladder
#26616
Fig 1A



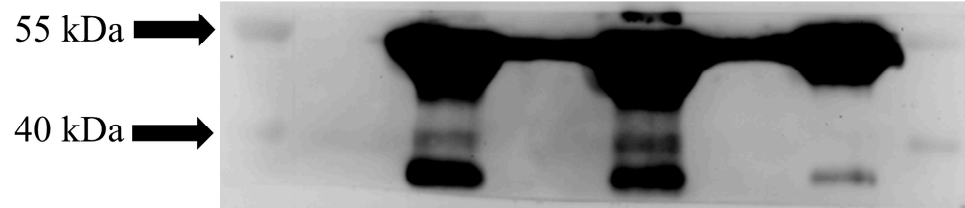
Thermo Scientific
PageRuler Prestained Protein Ladder
#26616

Fig 2A

CD63 \doteq 53 kDa



GAPDH \doteq 37 kDa



Calnexin \doteq 95 kDa



