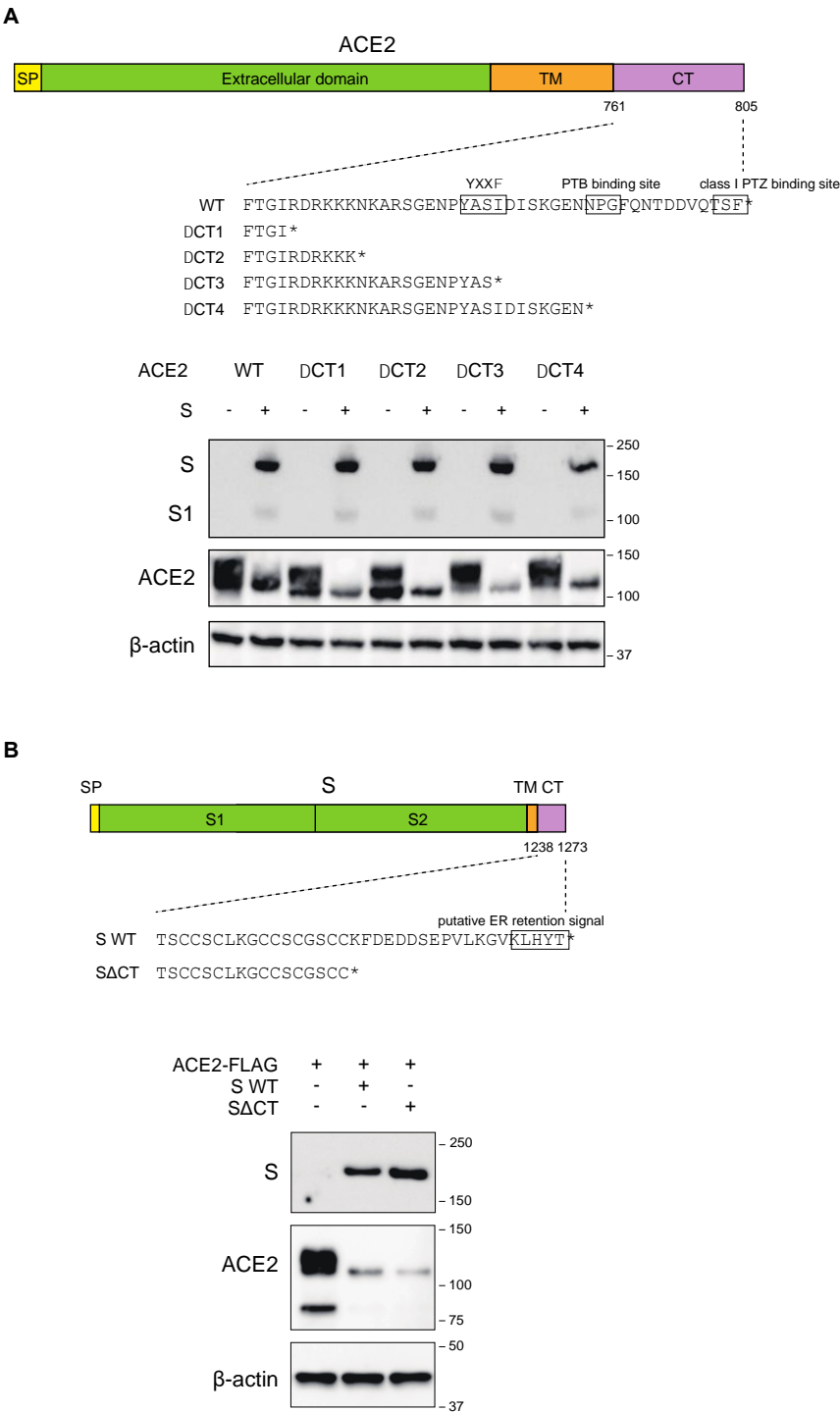


Supplementary Figures

Fig. S1



Supplemental Figure S1: Effect of cytoplasmic tail deletions of ACE2 or the S protein of SARS-COV-2 on the downregulation of ACE2. (A) (upper) Schematic of deletions in

cytoplasmic tail of ACE2. Amino acid sequences of wild-type cytoplasmic tail (WT) of ACE2 or deletions of the cytoplasmic tail (Δ CT1-4) are shown. **(lower)** Cell lysates from 293T cells transfected with ACE2 expression vectors with wild-type (WT) or cytoplasmic deletions (Δ CT1-4) in the presence or absence of an S protein expression vector were subjected to Western blotting using anti-S1, anti-ACE2, and anti- β -actin antibodies. **(B) (upper)** Schematic of a deletion in cytoplasmic tail of the S protein. Amino acid sequences of a wild-type cytoplasmic tail (S WT) or a cytoplasmic tail deletion (S Δ CT) of the S protein are shown. **(lower)** Cell lysates from 293T cells transfected with an ACE2-FLAG expression vector in the presence of empty, S WT, or S Δ CT vectors were subjected to Western blotting using anti-S1, anti-FLAG, and anti- β -actin antibodies. The positions of the molecular mass marker (kDa) are indicated on the right.