

Supplementary Material

1.1 Supplementary Figures

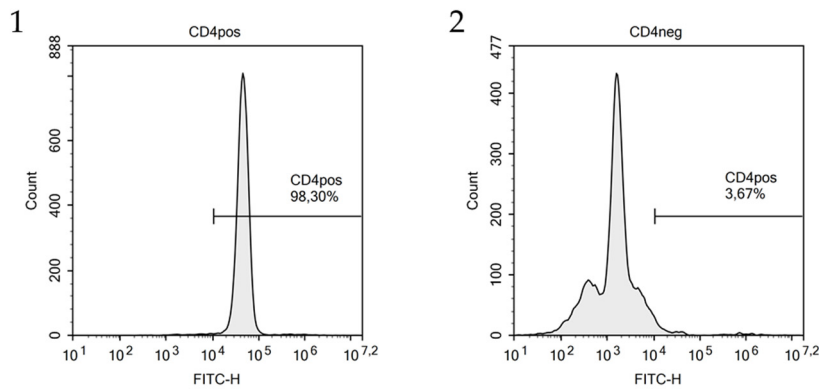


Figure S1: Purity of CD4⁺ T cell fractions after magnetic activated cell sorting (MACS). (1) Graph showing representative flow cytometry result of a CD4 positive T cell fraction, stained with mouse anti horse CD4 FITC antibody. (2) Graph showing a representative flow cytometry result of the flow-through CD4 negative T cell fraction, stained with mouse anti horse CD4 FITC antibody.

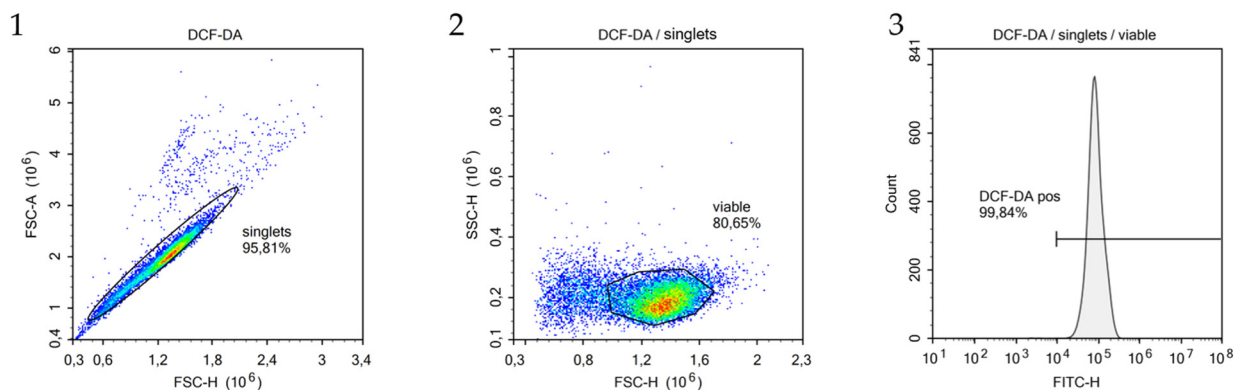


Figure S2: Representative gating strategy for flow cytometry analysis in DCF-DA staining experiments. (1) Single cells were selected in a forward scatter-height vs forward scatter-area density plot. (2) Viable cells (PI negative) were used for further analysis in (3) DCF-DA staining. Positive cells were selected by FITC-H expression.