

Supporting information

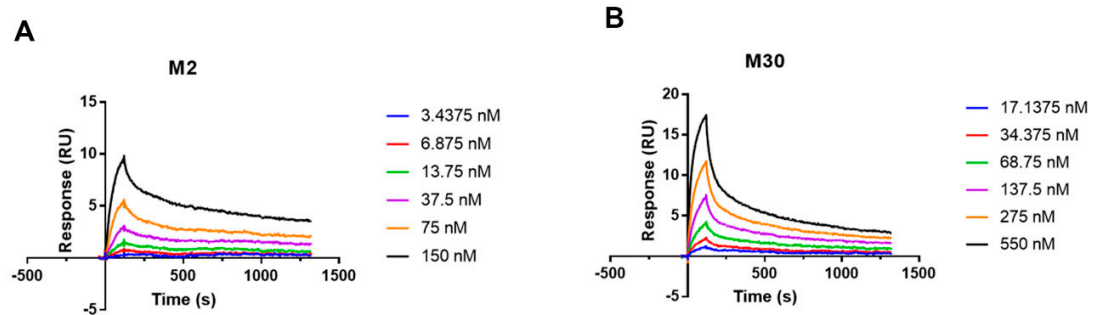


Figure S1. Further affinity analysis of M2 and M30 mutants binding to Aβ1-42 oligomers by Biacore T200. **(A)** M2; **(B)** M30.

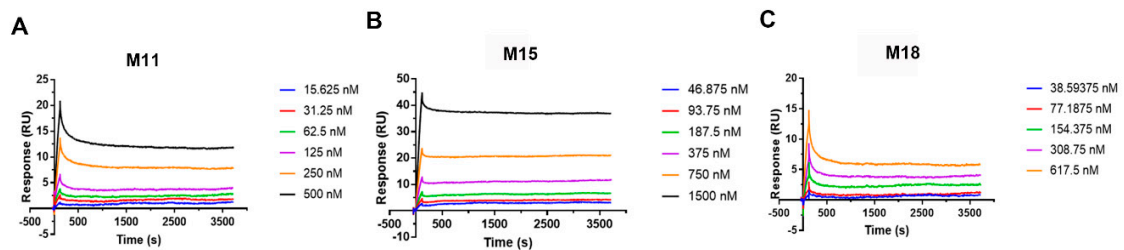


Figure S2. Further affinity analysis of M11, M15 and M18 mutants binding to AL fibrils by Biacore T200. **(A)** M11; **(B)** M15; **(C)** M18.

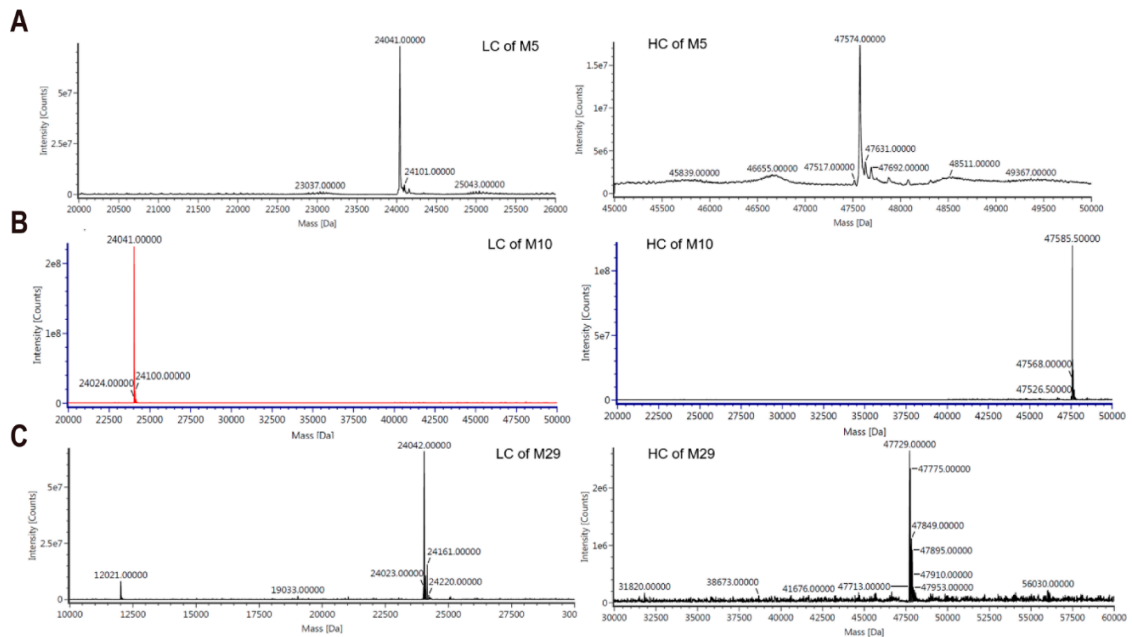


Figure S3. Light chain and heavy chain molecular weight analysis of M5, M10 and M29 by Waters ACQUITY UPLC H-Class system. **(A)** M5; **(B)** M10; **(C)** M29.

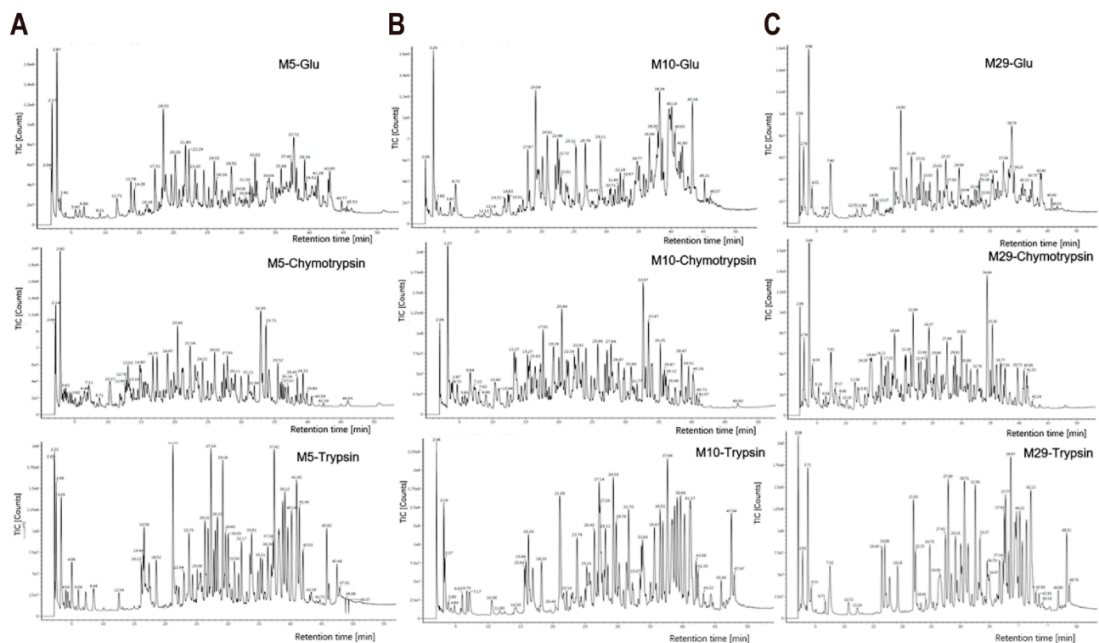


Figure S4. Peptide mapping of M5, M10 and M29 digested by three enzymes (Trypsin, Chymotrypsin, Glu-C) respectively by Waters ACQUITY UPLC H-Class system.