

Supplementary materials

Untargeted Metabolomic Analyses and Antilipidemic Effects of Citrus Physiological Premature Fruit Drop

Chao Wang ^{1,2}, Mingfang Peng ^{1,2}, Zhipeng Gao ³, Qi Han ⁴, Fuhua Fu ^{1,2}, Gaoyang Li ^{1,2}, Donglin Su ^{1,2}, Lvhong Huang ², Jiajing Guo ^{2,*} and Yang Shan ^{1,*}

¹ Longping Branch, College of Biology, Hunan University, Changsha 410125, China

² Hunan Agriculture Product Processing Institute, Dongting Laboratory, Hunan Provincial Key Laboratory of Fruits & Vegetables Storage, Processing, Quality and Safety, Hunan Academy of Agricultural Sciences, Changsha 410125, China

³ Fisheries College, Hunan Agricultural University, Changsha 410128, China

⁴ College of Animal Science and Technology, Hunan Agricultural University, Changsha 410128, China

* Correspondence: guojiajing1986@163.com (J.G.); sy6302@sohu.com or sy6302@hnu.edu.cn (Y.S.); Tel.: +86-(0)731-8469-8915 (J.G.); +86-(0)731-8469-1289 (Y.S.)

Total Pages: 2; Total Figures:2

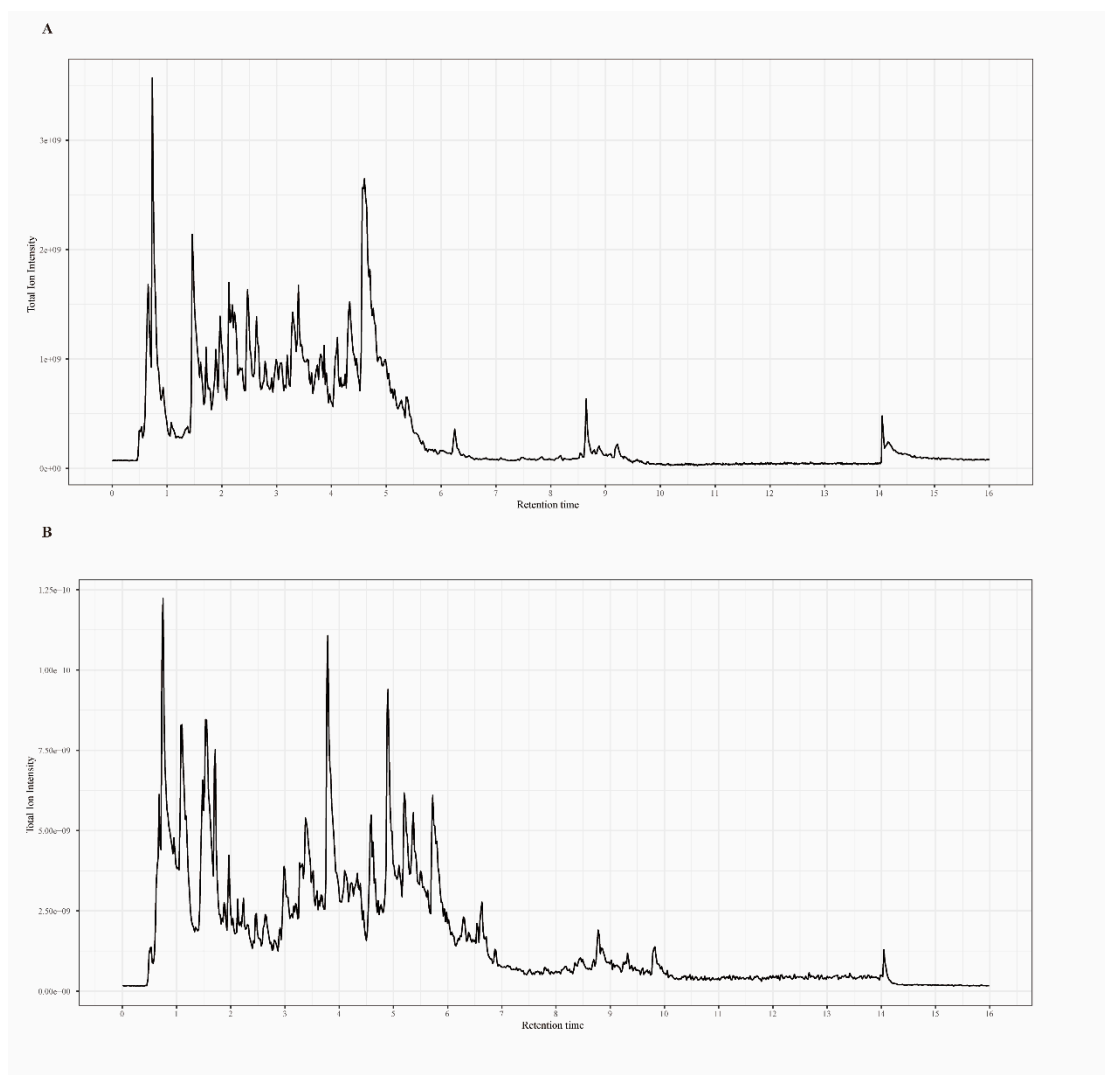


Figure S1. Total ion current (TIC) chromatograms of *Citrus aurantium* L. 'Daidai' physiological premature fruit drop. **(A)** negative mode. **(B)** positive mode.

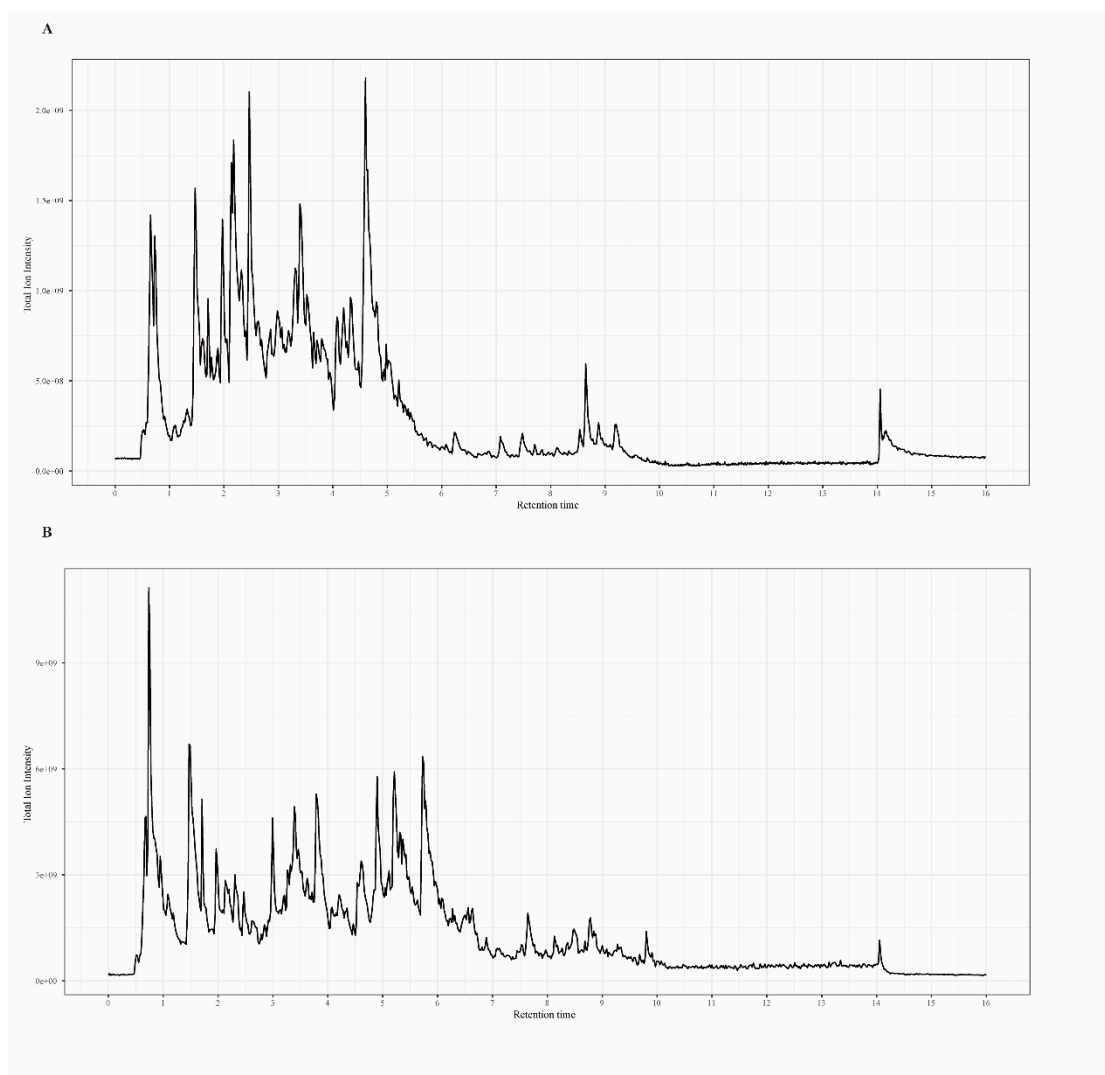


Figure S2. Total ion current chromatograms of *Citrus aurantium* 'Changshan-huyou' physiological premature fruit drop. **(A)** negative mode. **(B)** positive mode.