

Supplementary information

The Nuclear Localization Signal of Porcine Circovirus Type 4 Affects the Subcellular Localization of the Virus Capsid and the Production of Virus-like Particles

Jiawei Zheng ^{1,†}, Nan Li ^{2,†}, Xue Li ¹, Yaqi Han ¹, Xinru Lv ¹, Huimin Zhang ¹
and Linzhu Ren ^{1,3,*}

¹ College of Animal Sciences, Key Lab for Zoonoses Research, Ministry of Education, Jilin University, 5333 Xi'an Road, Changchun 130062, China; zhengjw21@mails.jlu.edu.cn (J.Z.)

² Changchun Veterinary Research Institute, Chinese Academy of Agricultural Sciences, 666 Liuying West Road, Changchun 130122, China; linan226@126.com

³ College of Veterinary Medicine, Yunnan Agricultural University, Kunming 650201, China

* Correspondence: renlz@jlu.edu.cn

† These authors contributed equally to this work.

This file includes:
Supplemental Table S1
Figure S1 to S2

Supplementary Table S1. Primers used for site-directed mutagenesis techniques.

| Primer Name | Primer Sequence |
|---|--|
| pEGFP-Cap Δ NLS-A | F: ccgctcgagatgccaatccggggactg R: cgggggtacctccctgtttggggtagttaac |
| pEGFP-Cap Δ NLS-B | F: ccgctcgagatgccaatcagatctaggtacagcagac R: cgggggtacctccctgtttggggtagttaac |
| pEGFP-Cap Δ NLS | F: ccgctcgagatgggaattttccatgcgcgcttc R: cgggggtacctccctgtttggggtagttaac |
| pET-28a-PCV4Cap Δ NLS | F: ggaattttccatgcgc R: gattggcatatggctg |
| pET-28a-PCV4cap Δ NLS-A | F: cggggactgtggcc R: gattggcatatggctgcc |
| pET-28a-PCV4cap Δ NLS-B | F: aacggaattttccatgcgc R: ccacagtccccgcc |
| pET-28a-PCV4Cap Δ NLSA1 | F: cgtaaccggcggaaccag R: gattggcatatggctgccg |
| pET-28a-PCV4Cap Δ NLSA2 | F: cggggactgtggccccgg R: cctccgtctgctgtacctagatctgattgg |
| pET-28a-PCV4Cap Δ NLS-A β | F: cggggactgtggccccgg R: ccgccggttacgcctccg |
| pET-28a-PCV4Cap Δ NLS-A α | F: agcagacggaggcgtaac R: gattggcatatggctgcc |

Figure S1

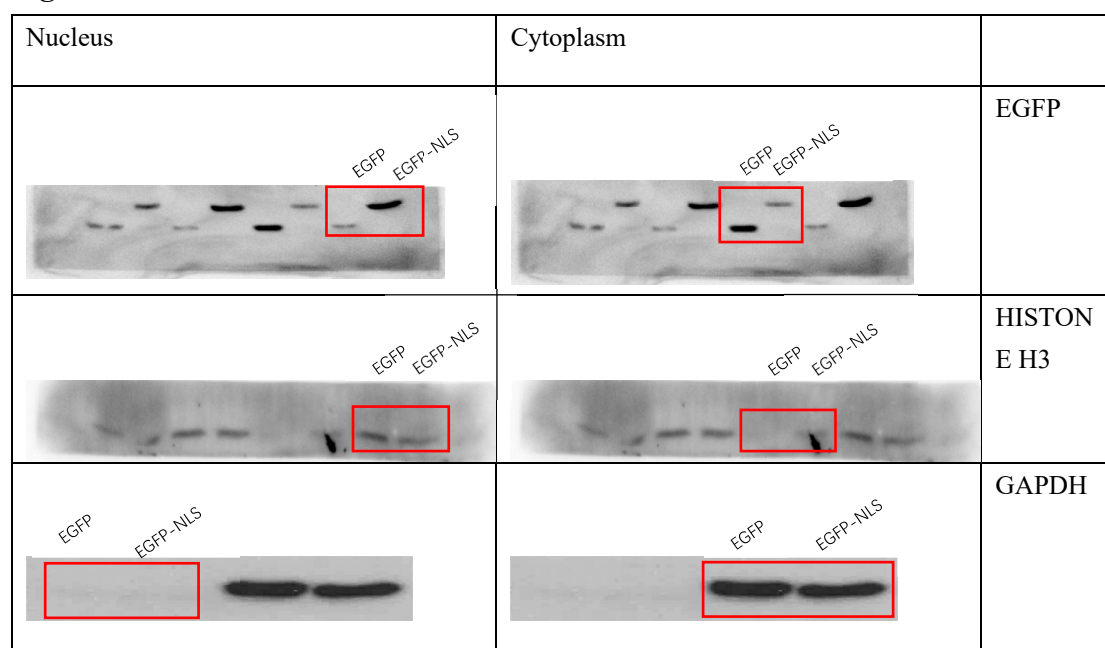


Figure S1. Original Western blot images used to prepare Figure 1C.

Figure S2

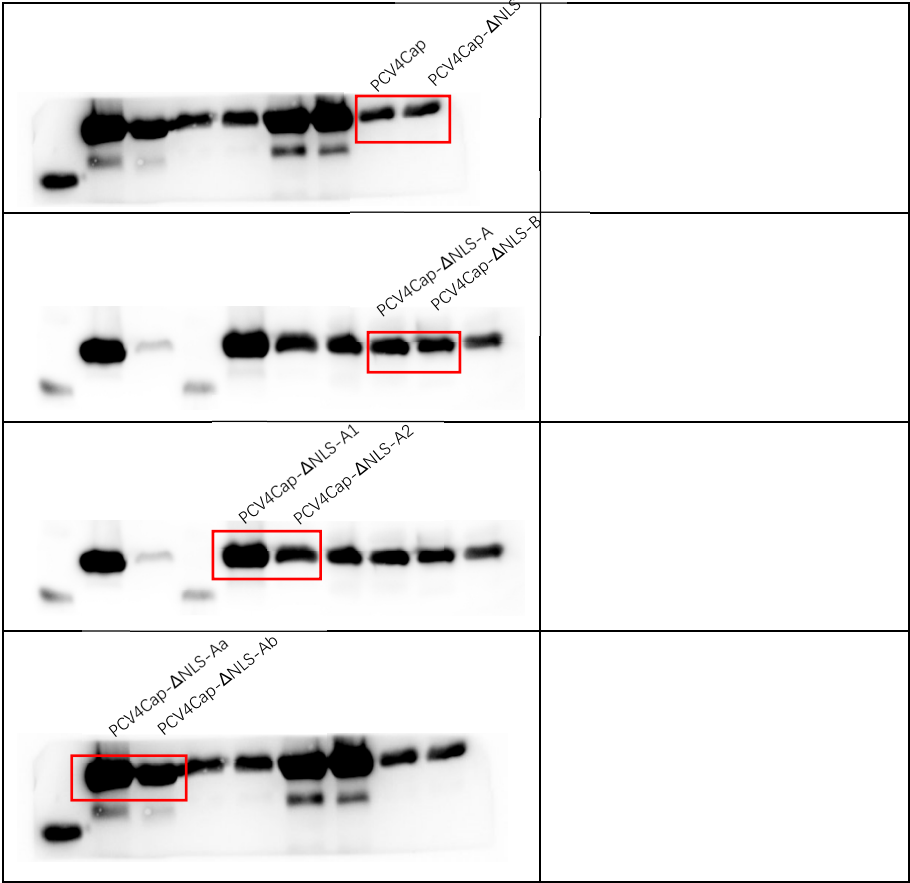


Figure S2. Original Western blot images used to prepare Figure 3B.