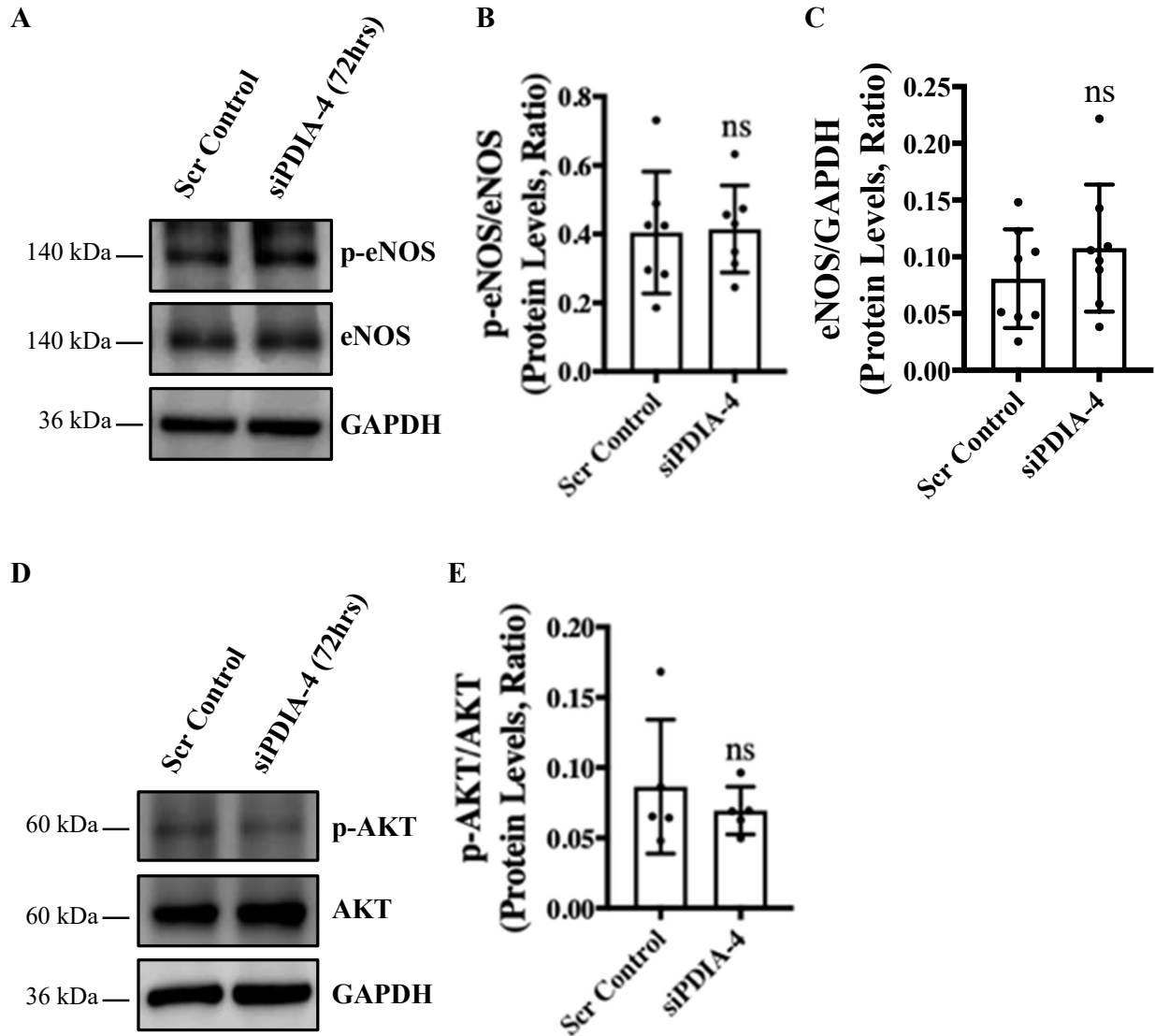


Supplementary Figure S1



Supplementary Figure S1. HUVECs were reverse transfected with siPDIA-4 or scrambled control and incubated in complete EGM-2 medium for 72hrs. Proteins were extracted and western blot was performed targeting eNOS, p-eNOS or GAPDH (**A**), AKT, p-AKT or GAPDH (**B**), and bands were quantified (**B**, **C**, **E**) (n=5-7). ns=non-significant.

Supplementary Table S1

Table S1. List of primers used to amplify genes

Primer Name	Sequences (5'-3')
Hsa- <i>PDIA-4-F</i>	5'-CACGCTTGTGTTGACCAAAGA-3'
Hsa- <i>PDIA-4-R</i>	5'-AATTGGAGGAGAACGCTTGCT-3'
Hsa- <i>TGFB1-F</i>	5'-TACAGCACGGTATGCAAGCC-3'
Hsa- <i>TGFB1-R</i>	5'-GCAACCGATCTAGCTCACAGAG-3'
Hsa- <i>SMAD3-F</i>	5'-TGGACGCAGGTTCTCCAAAC-3'
Hsa- <i>SMAD3-R</i>	5'-CCGGCTC GCAGTAGGAAC-3'
Hsa- <i>SMAD4-F</i>	5'-CTCATGTGATCTATGCCCGTC-3'
Hsa- <i>SMAD4-R</i>	5'-AGGTGATACAACCTCGTTCGTAGT-3'
Hsa- <i>CD31-F</i>	5'-TCCTGAGGGTCAAGGTAATAGC-3'
Hsa- <i>CD31-R</i>	5'-CTCCAGACTGTACATCGTTACCC-3'
Hsa- <i>VE-Cadherin-F</i>	5'-GAGTCTTCAGCTCACGGACA-3'
Hsa- <i>VE-Cadherin-R</i>	5'-CAGCTCTGTGAGCCTCTGC-3'
Hsa- <i>SLUG-F</i>	5'-ATCTGCGCiCAAGGCGTTTTCCA-3'
Hsa- <i>SLUG-R</i>	5'-GAGCCCTCAGATTTGACCTGTC-3'
Hsa- <i>TGFBR1-F</i>	5'-TACCTGAACCCGTGTTGCTCTC-3'
Hsa- <i>TGFBR1-R</i>	5'-GTTGCTGAGGTATCGCCAGGAA-3'
Hsa- <i>TGFBR2-F</i>	5'-GTCTGTGGATGACCTGGCTAAC-3'
Hsa- <i>TGFBR2-R</i>	5'-GACATCGGTCTGCTTGAAGGAC-3'
Hsa- <i>FSPI-F</i>	5'-TCTTGGTCTGGTCTCAACGG-5'
Hsa- <i>FSPI-R</i>	5'-TGTCACCCTCTTTGCCTGAG-3'
Hsa- <i>N-Cadherin-F</i>	5'-CCTCCAGAGTTTACTGCCATGAC-3'
Hsa- <i>N-Cadherin-R</i>	5'-GTAGGATCTCCGCCACTGATTC-3'