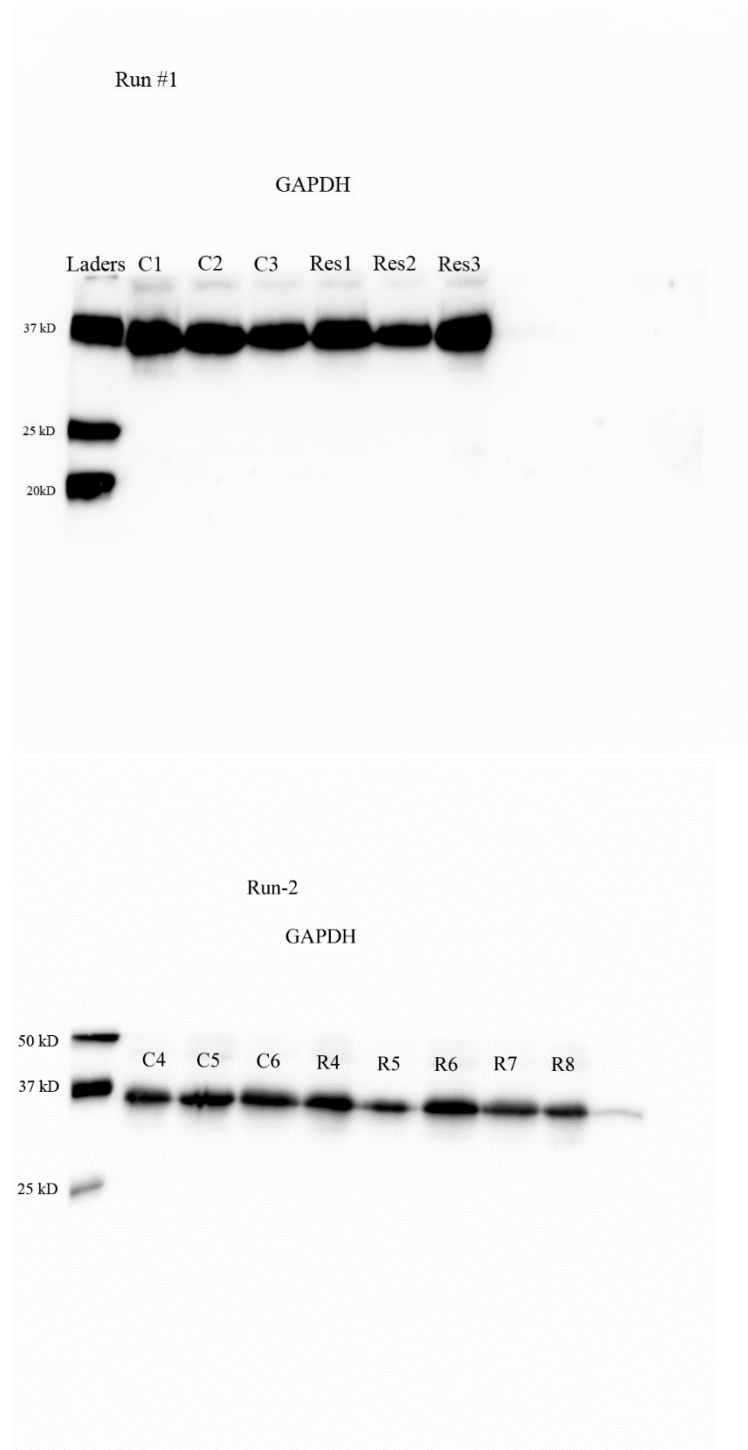


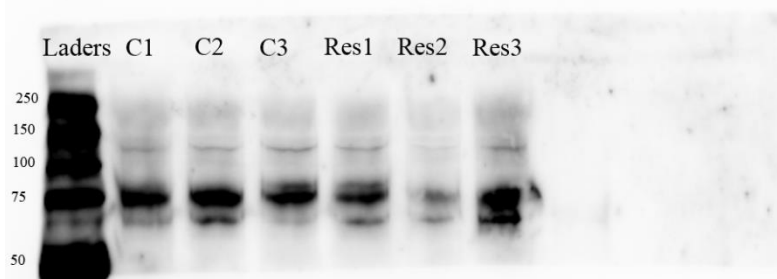
**Supplementary Figure S2.** Western Blot membranes showing proteins extracted from OVCAR-8 and SKOV-3 tumour implants. The OVCAR-8 cell lines are represented by six control tumour implants and eight tumour implants treated with resveratrol at 91.24  $\mu\text{g}$  (2 mM). Additionally, the SKOV-3 cell line data includes nine control tumour implants and eight tumour implants treated with resveratrol at 91.24  $\mu\text{g}$  (2 mM), C = control, and Res = Resveratrol.

### OVCAR-8 cell line



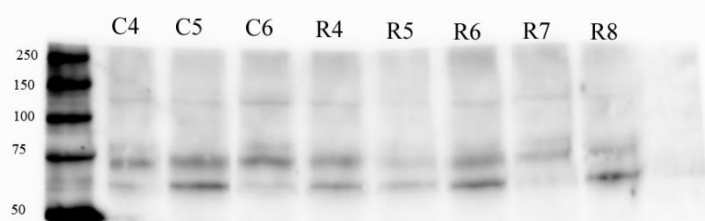
Run-1

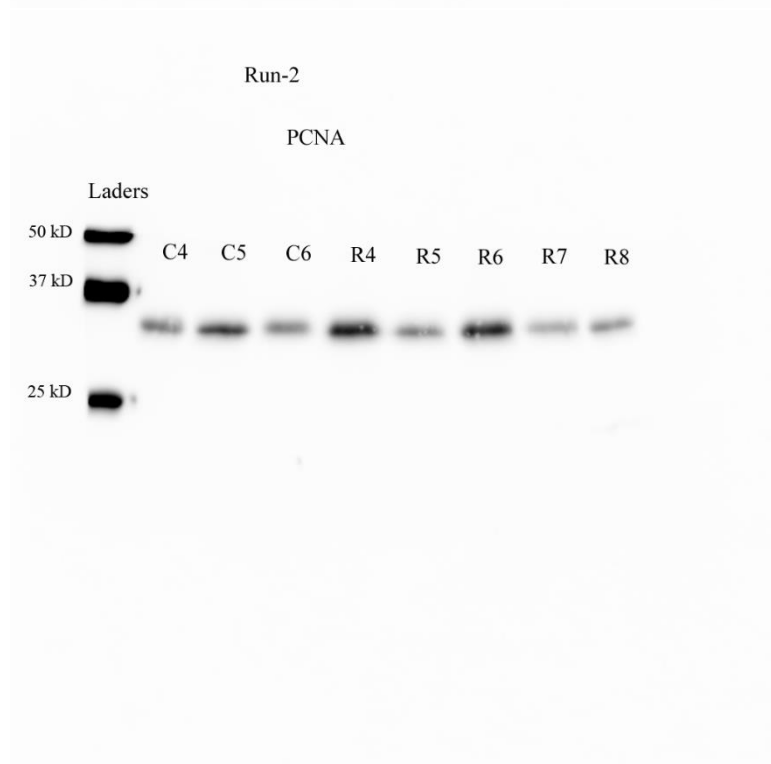
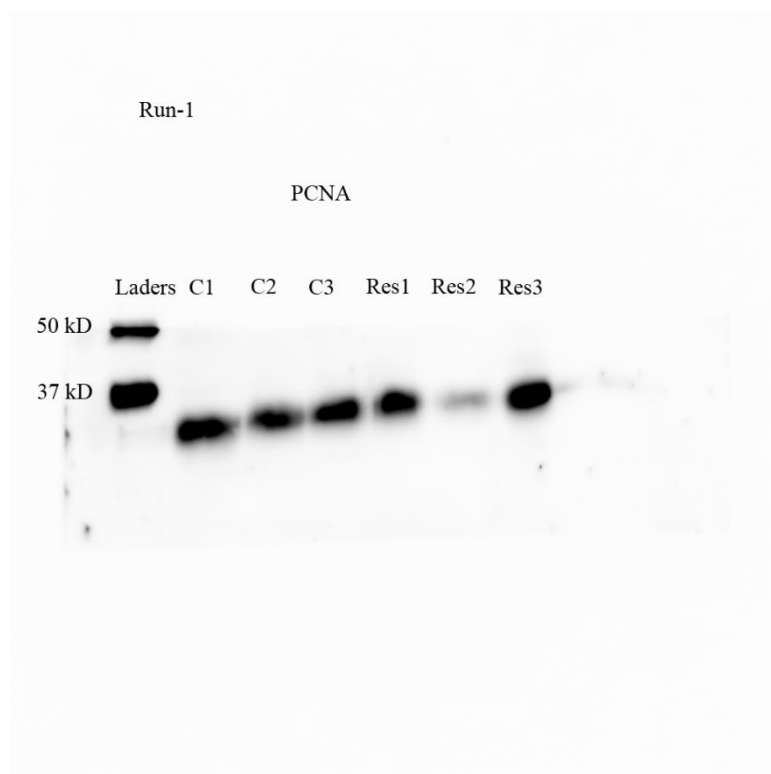
NF-kB



Run-2

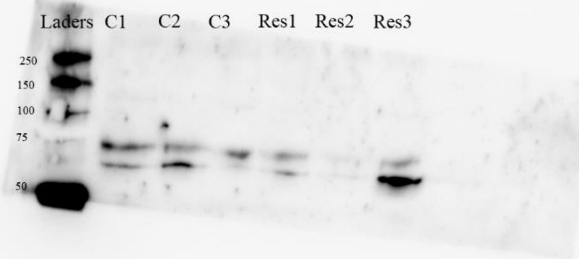
NF-kB





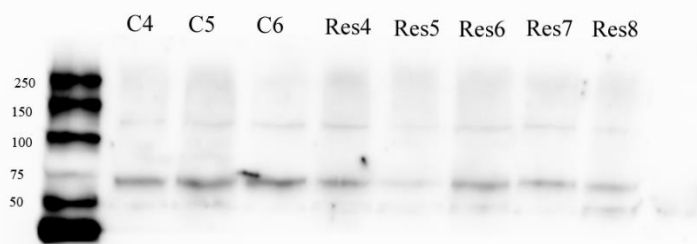
Run-1

pNF-kB



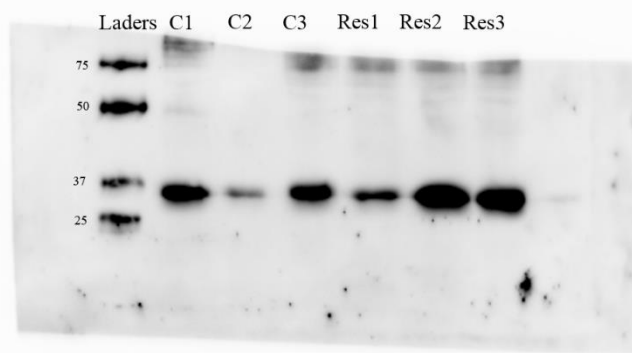
Run-2

pNF-kB



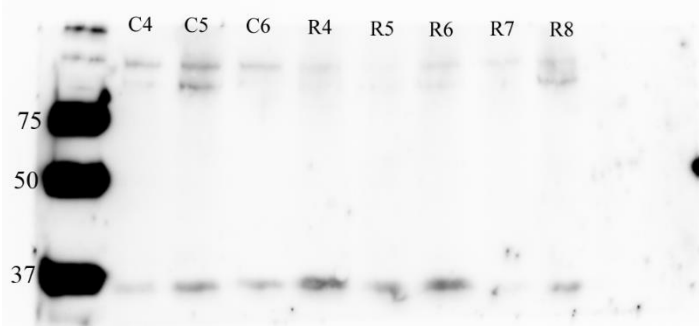
Run-1

SLUG

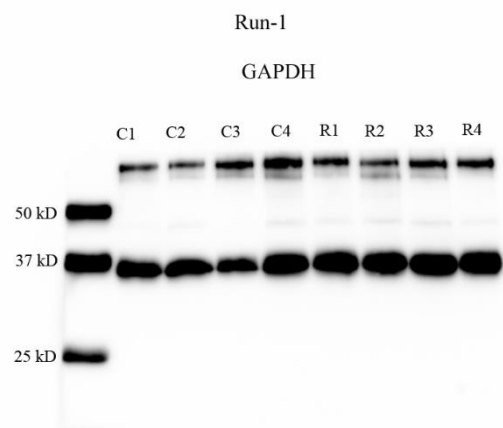
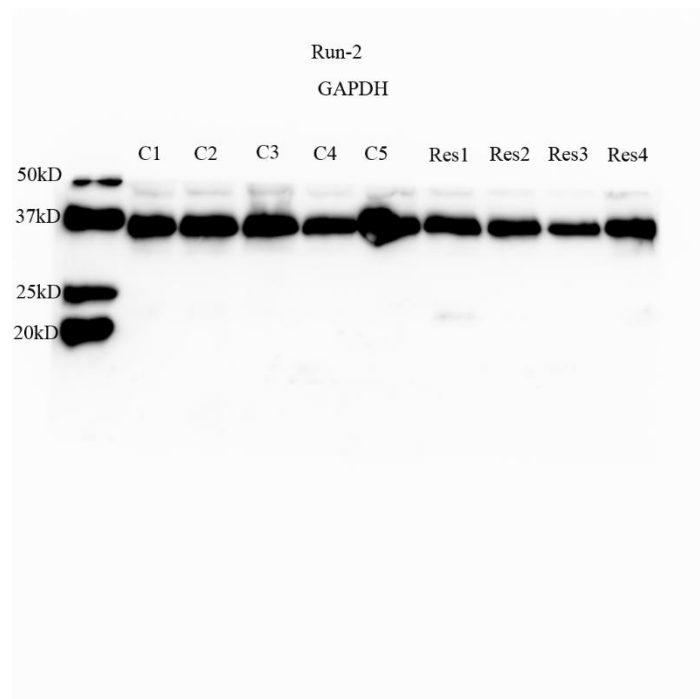


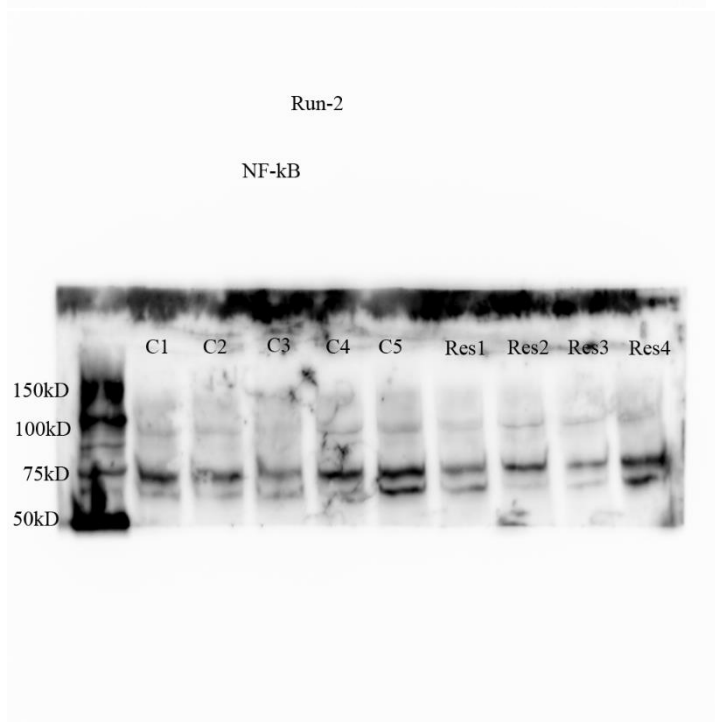
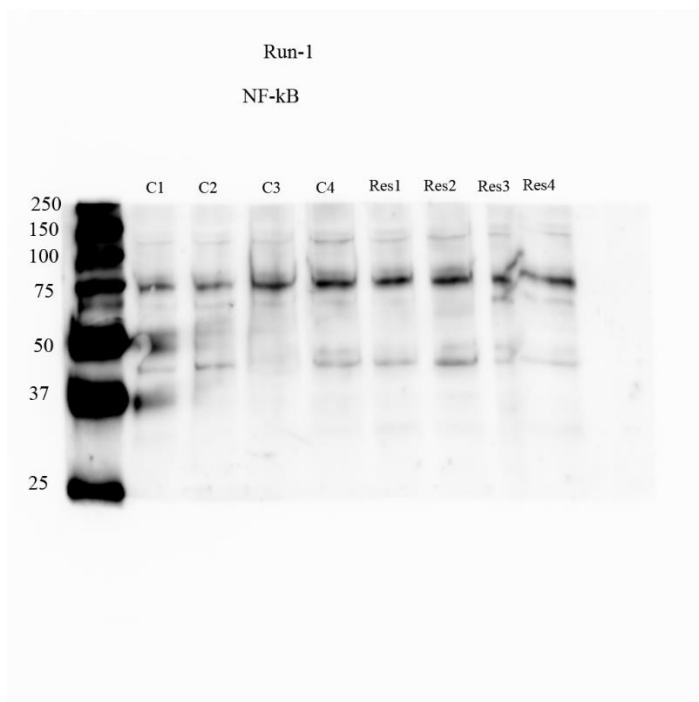
Run-2

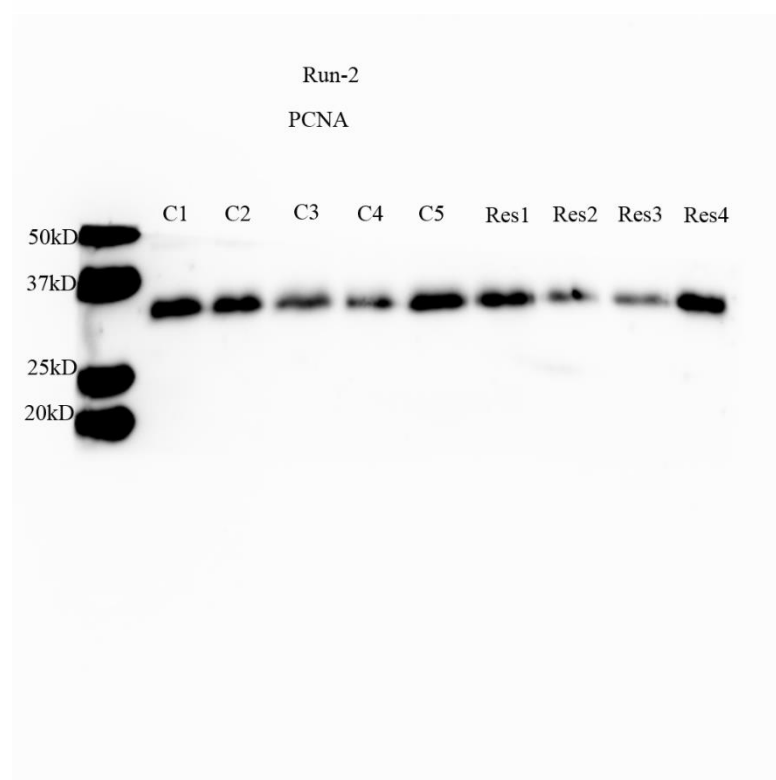
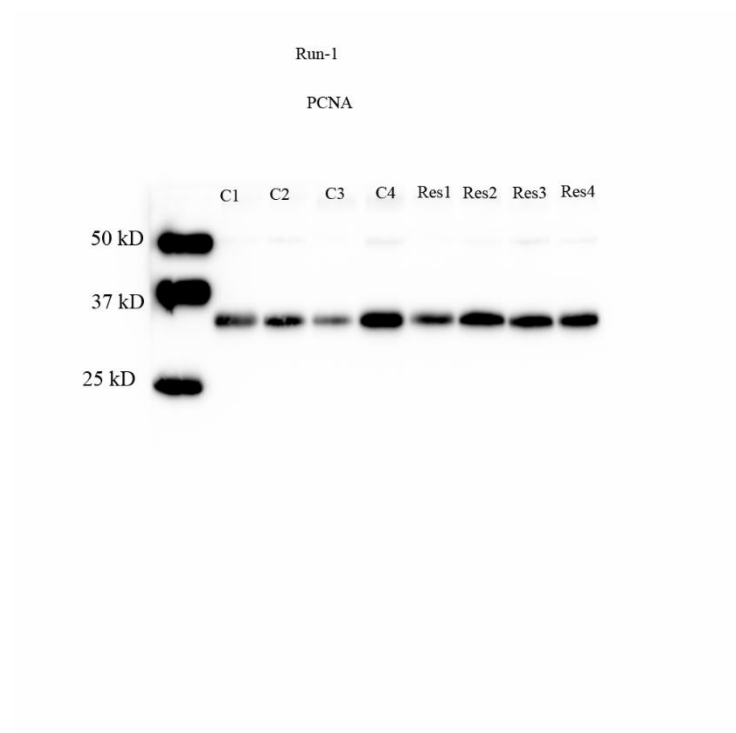
SLUG



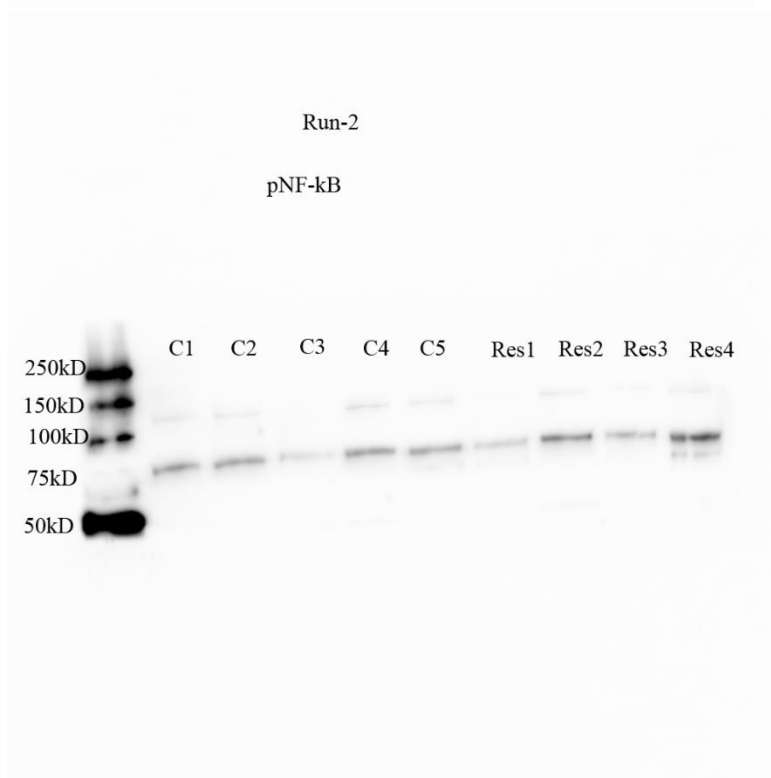
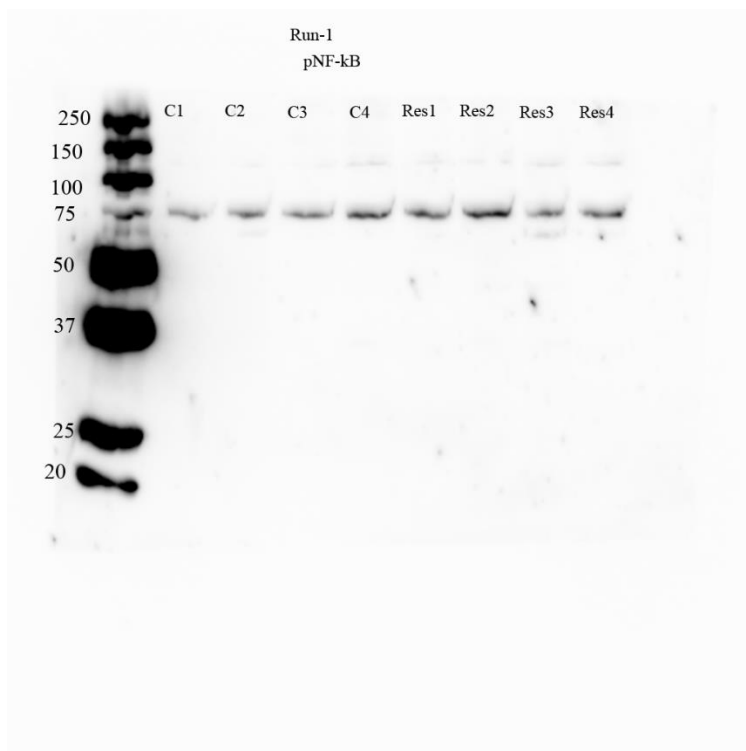
## SKOV-3



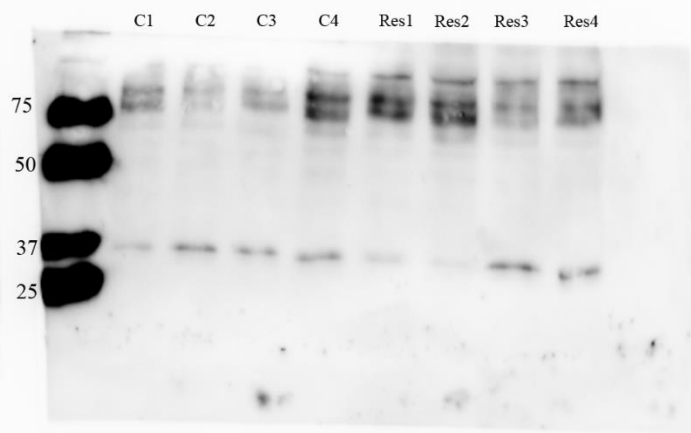








Run-1  
SLUG



Run-2  
SLUG

