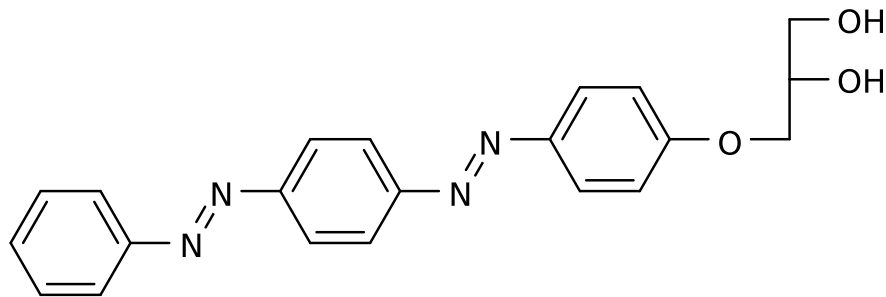


¹H NMR



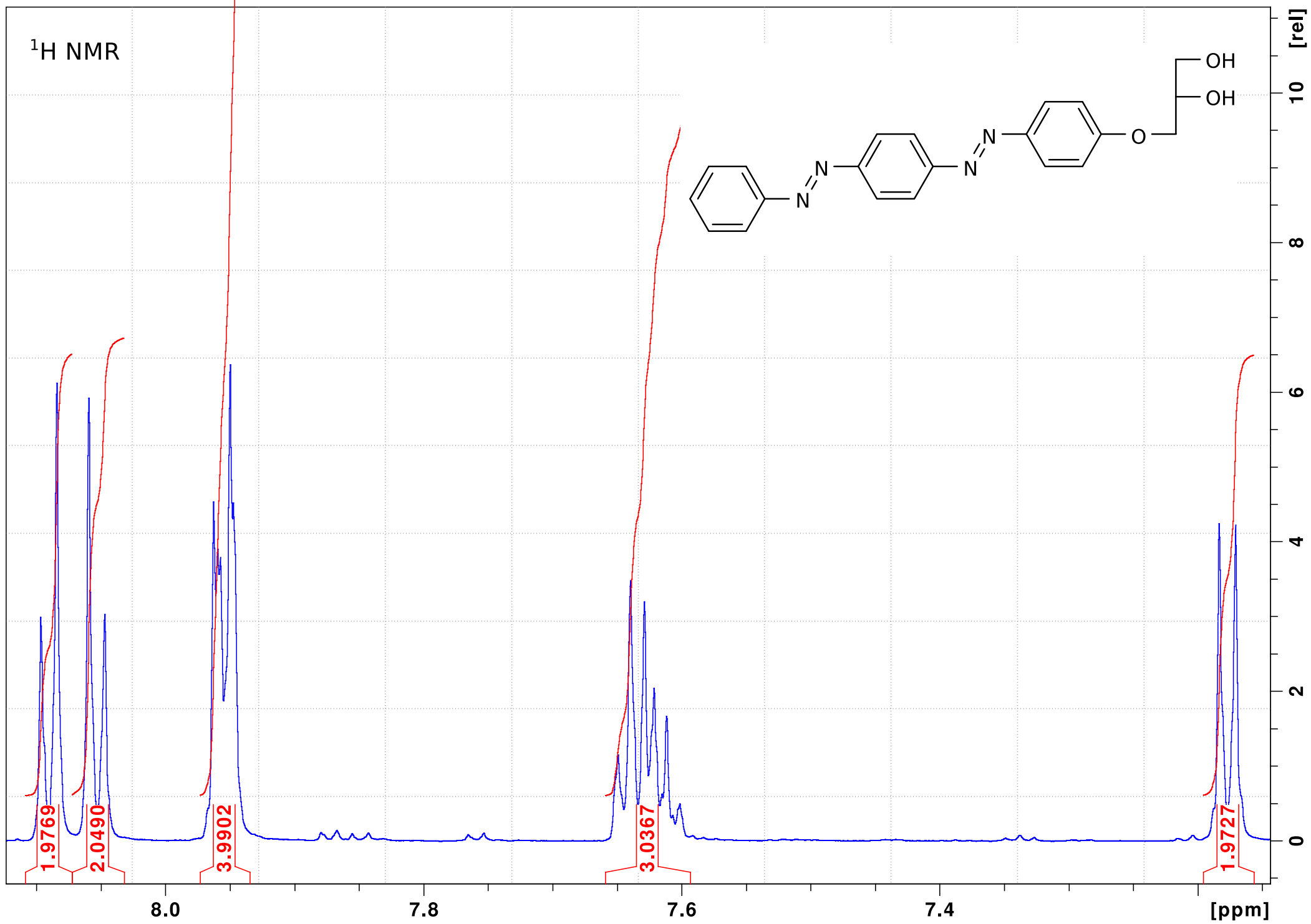
8.1032
8.0929
8.0668
8.0563
7.9678
7.9579
7.6556
7.6469
7.6377
7.6287
7.6201
7.6111
7.1899
7.1792

4.1712
4.1673
4.1595
4.1553
4.0366
4.0286
4.0168
3.8631
3.5024
3.4957

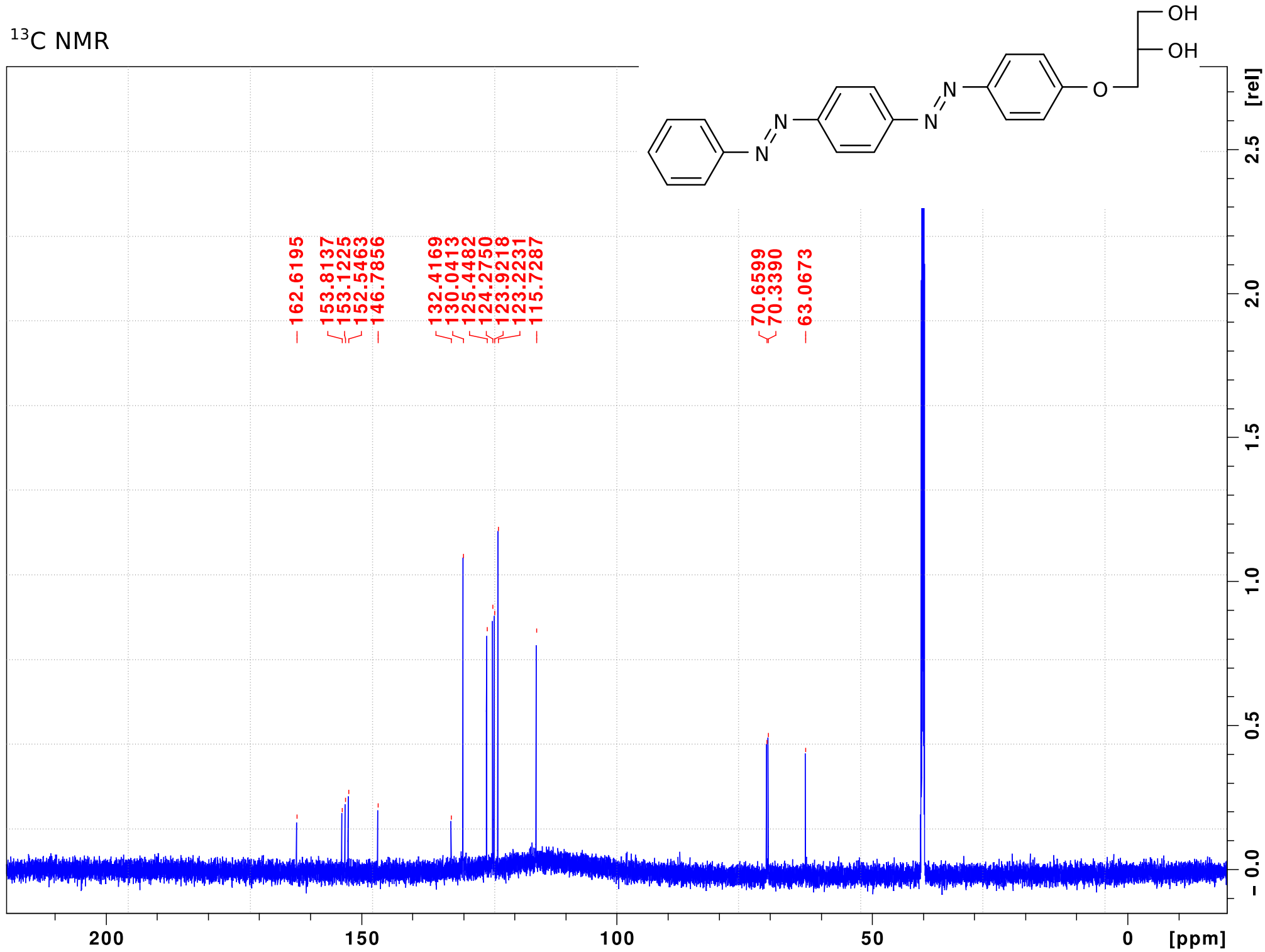
3.9952
3.9936
3.0308
2.0000

0.9630
0.9394
1.0158
1.0057
1.0062
1.9641

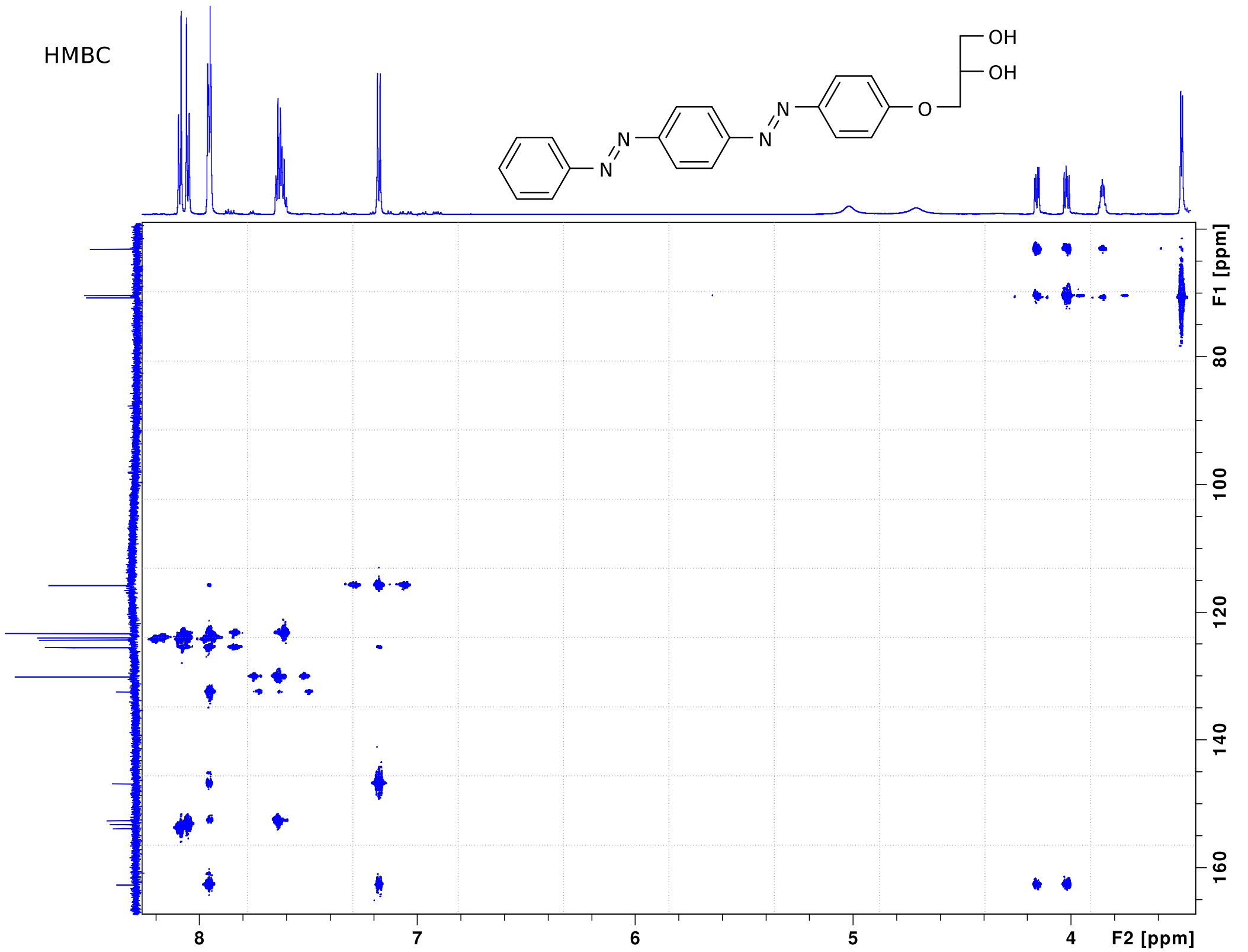
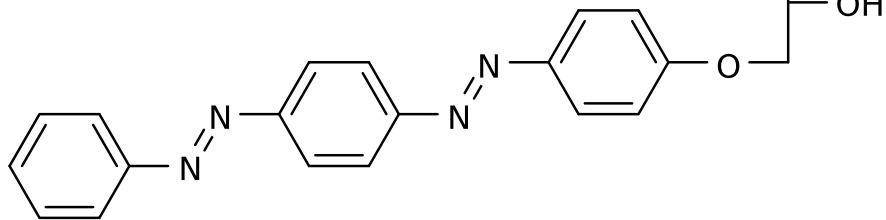
10 8 6 4 2 0 [ppm]



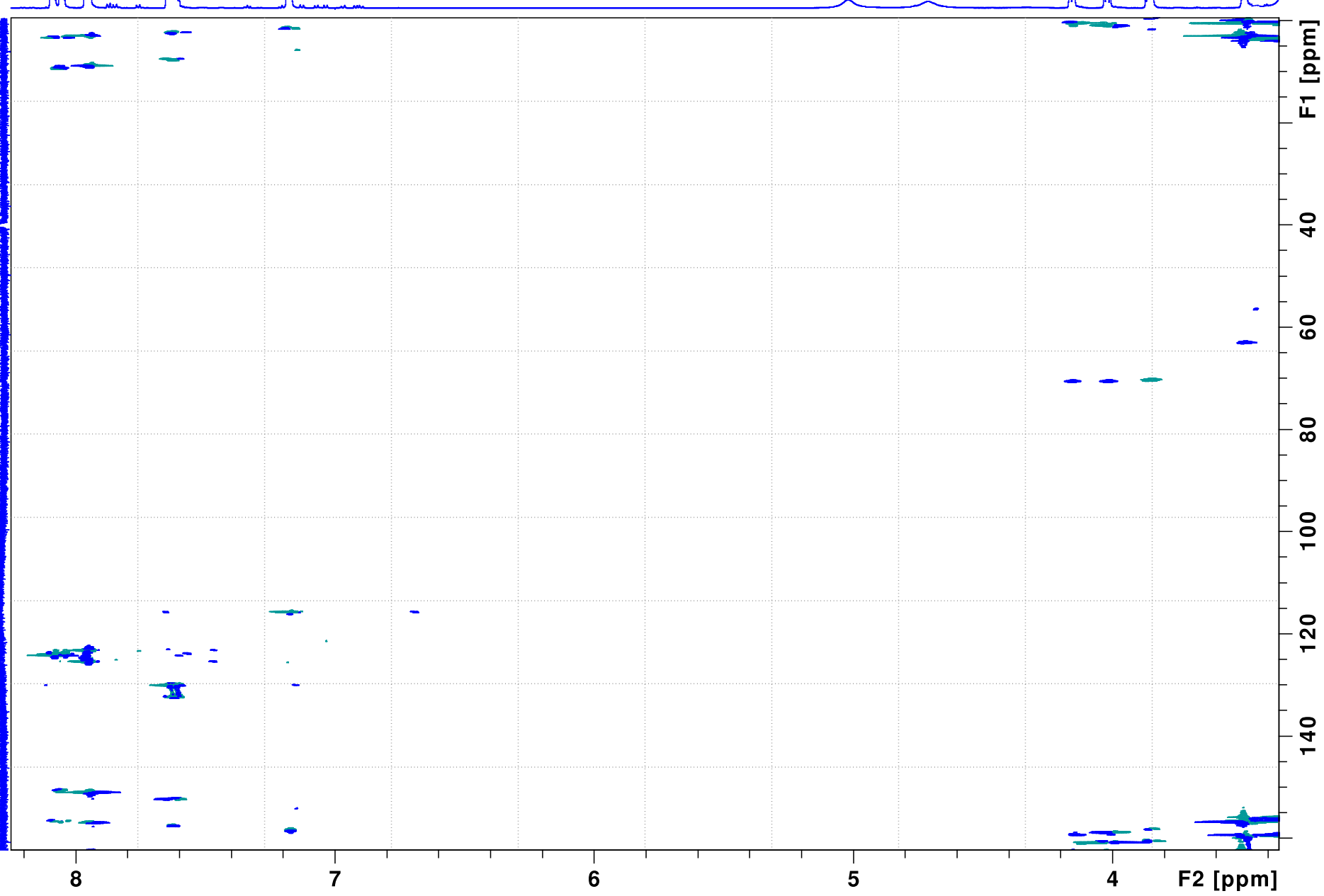
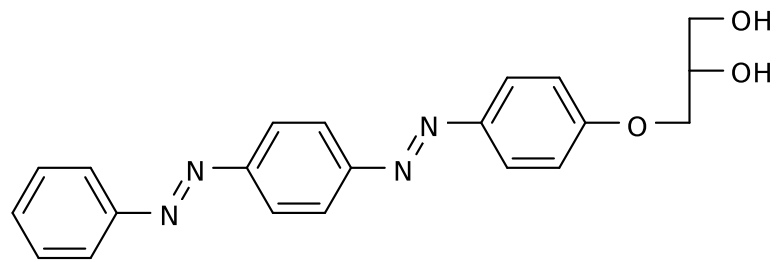
¹³C NMR

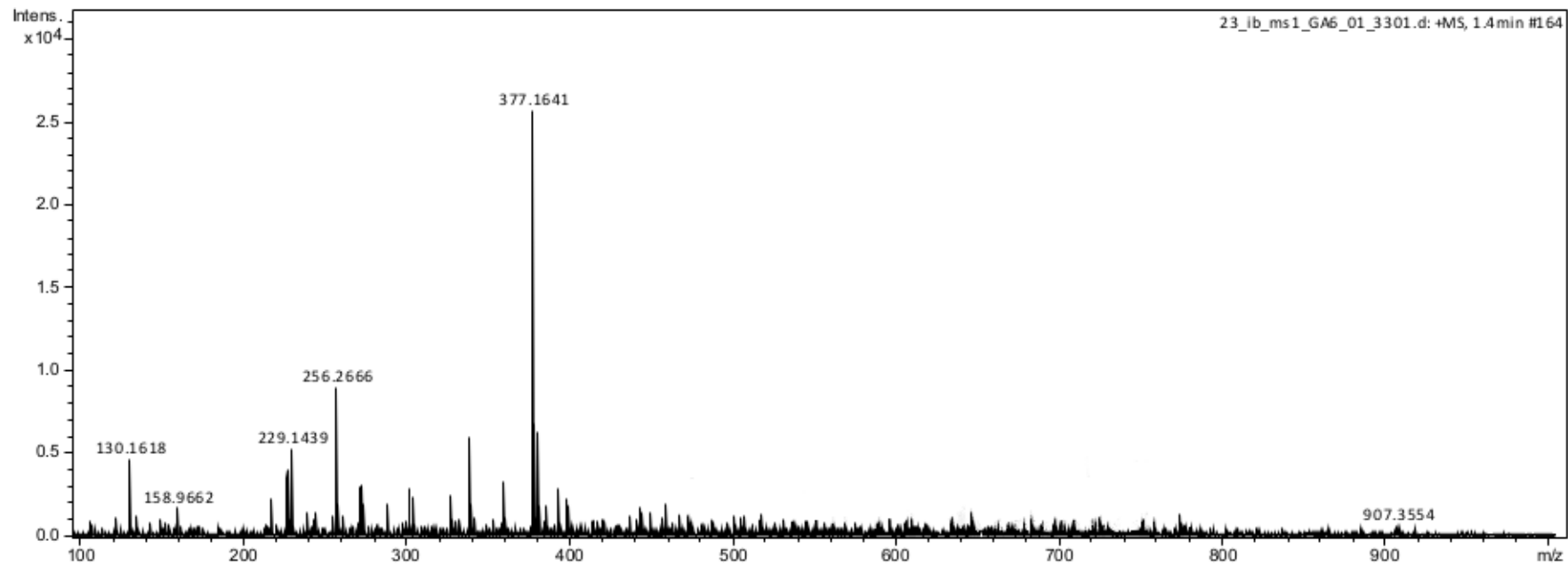


HMBC



HSQC





MW 376.15354