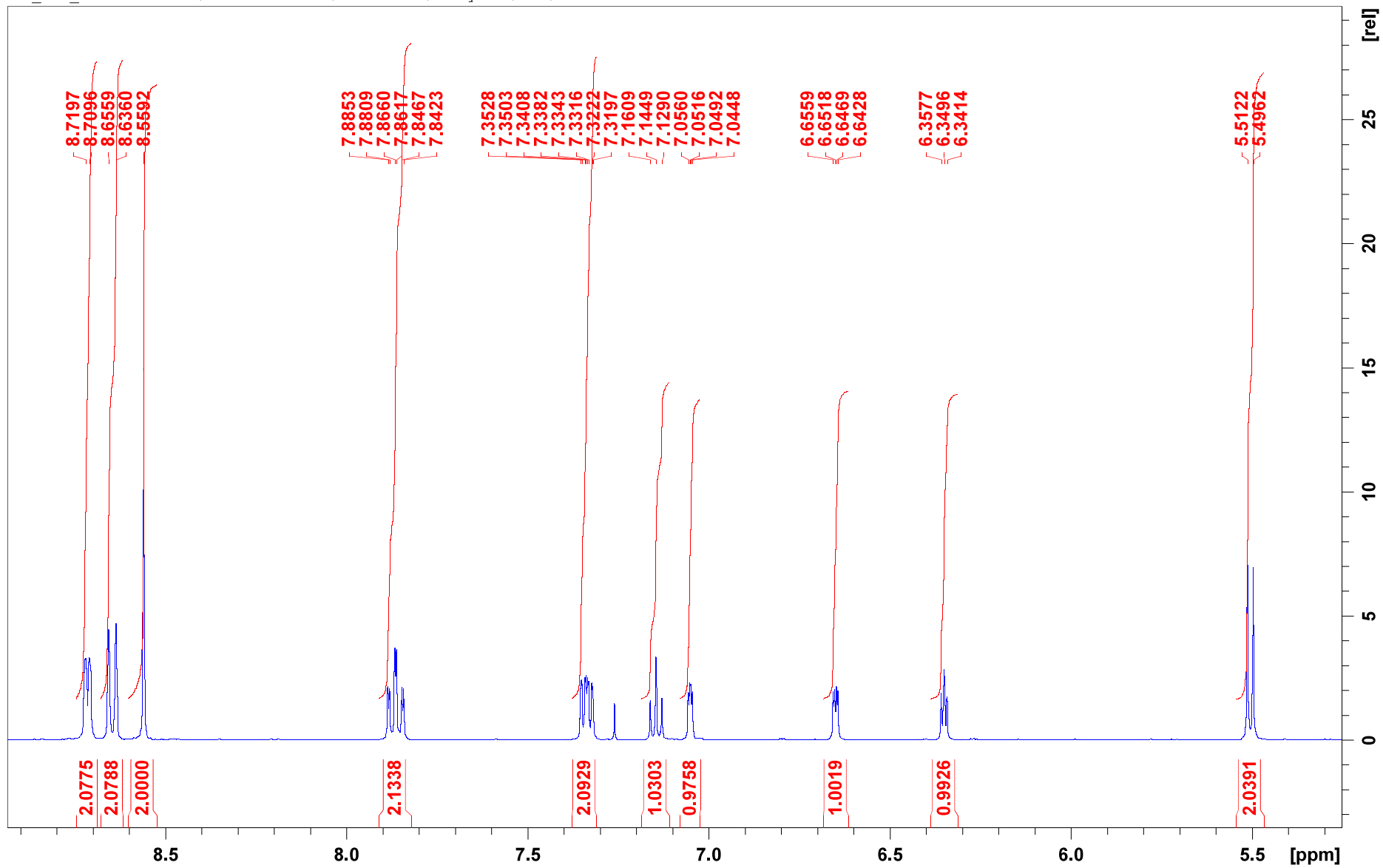
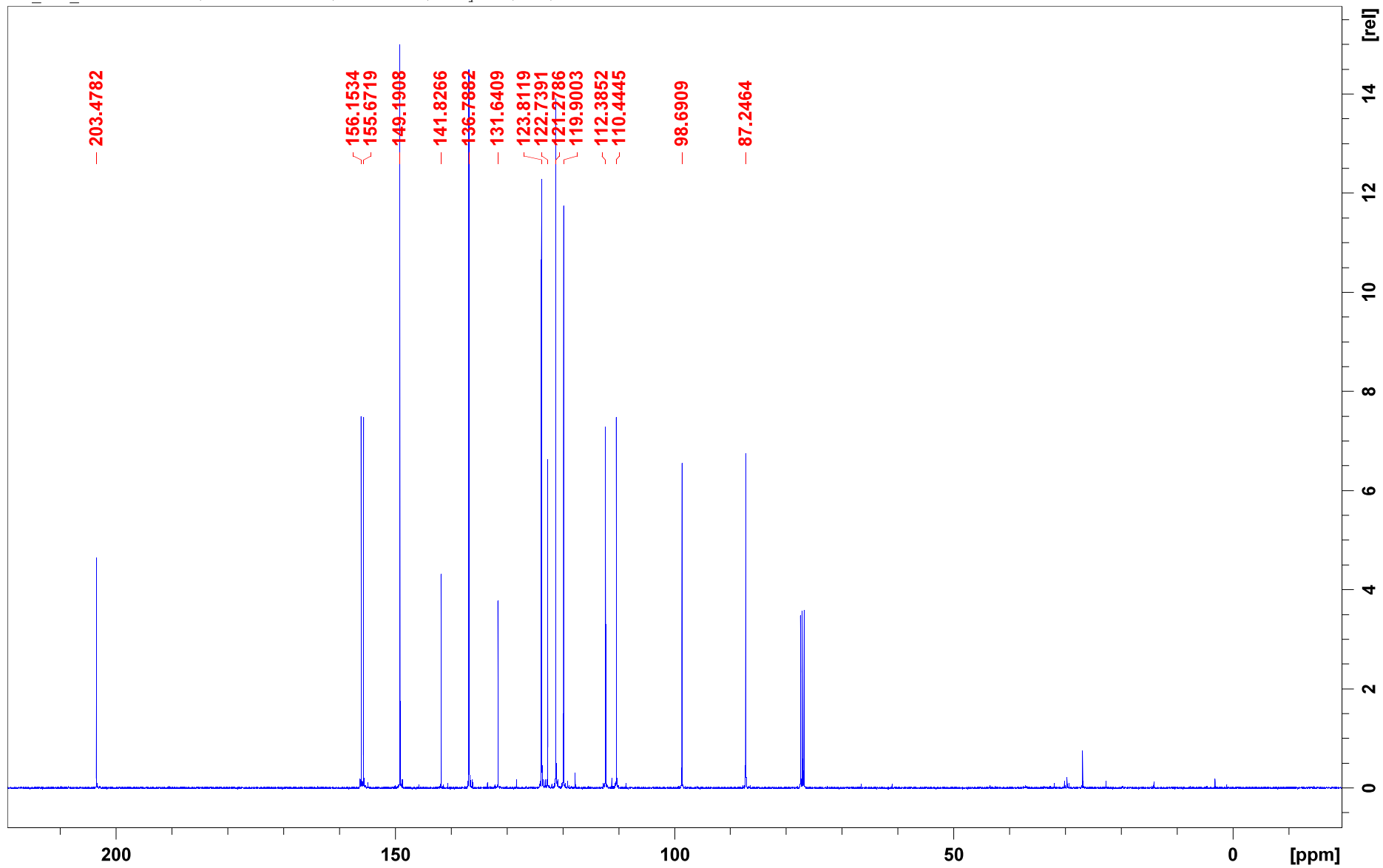


Supplementary Material

- ^1H NMR Spectrum
- ^{13}C NMR Spectrum
- ^1H - ^1H COSY Spectrum
- ^1H - ^{13}C HSQC Spectrum
- MS Spectra

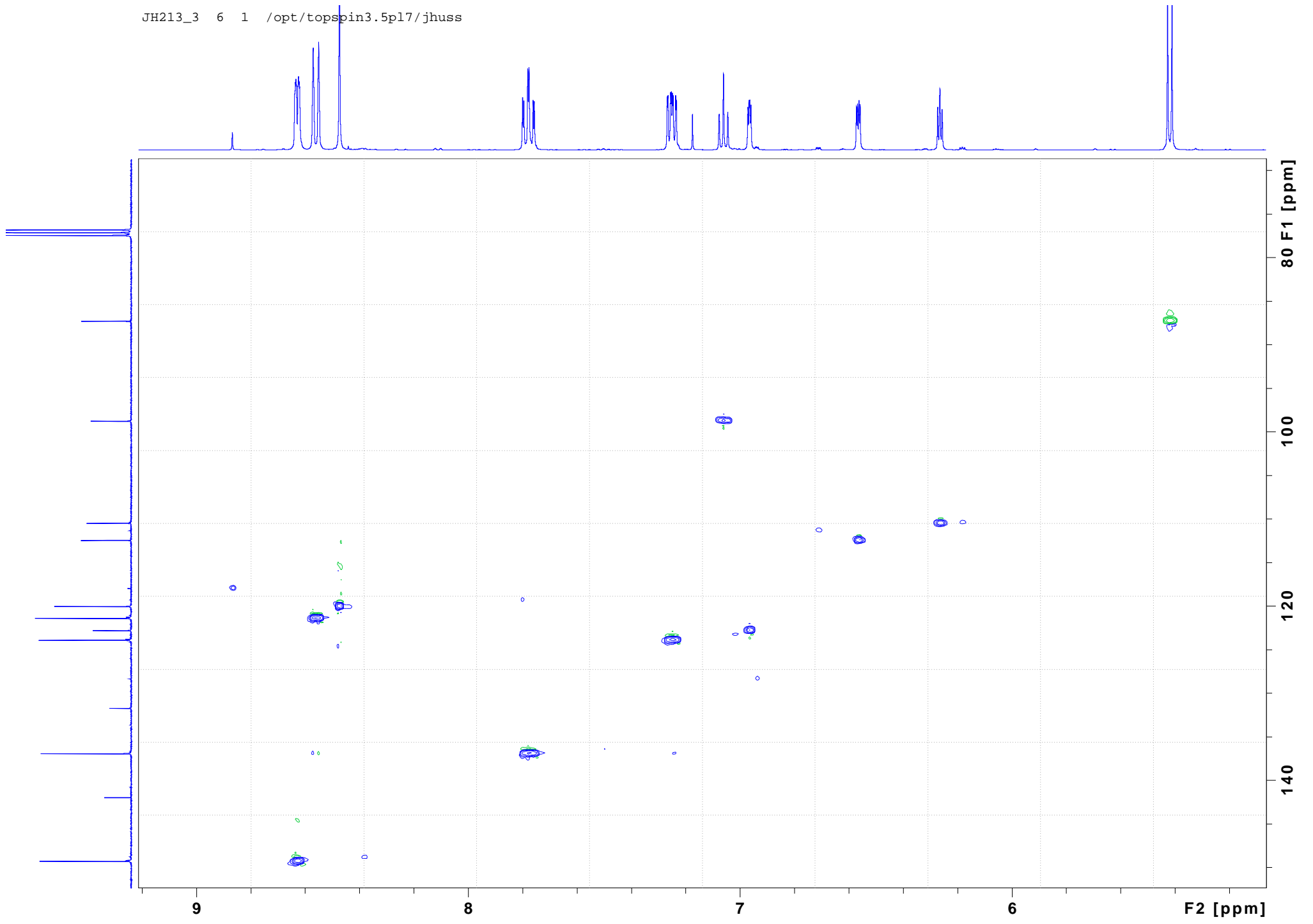




JH213_3 5 1 /opt/topspin3.5p17/jhuss

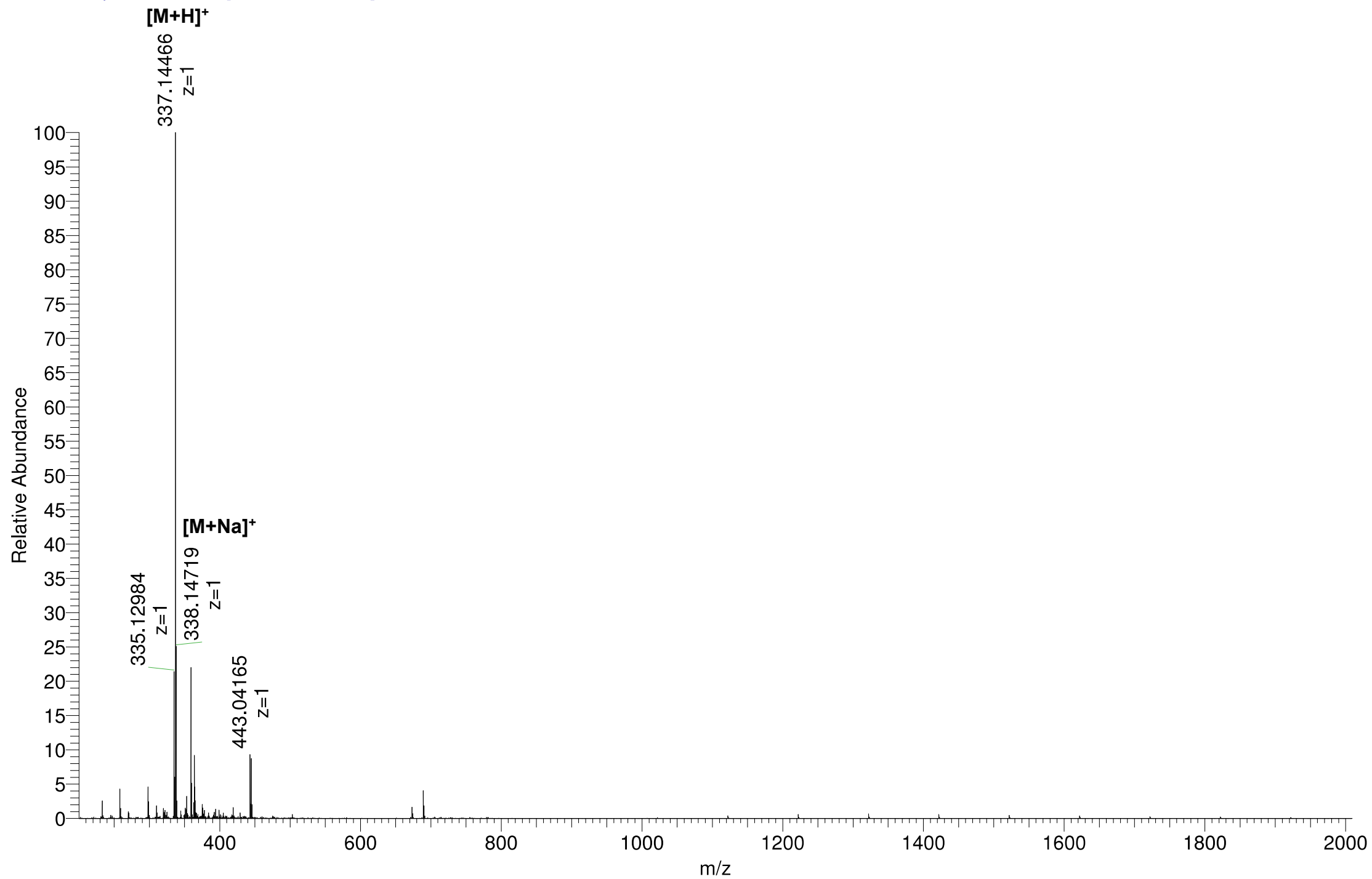


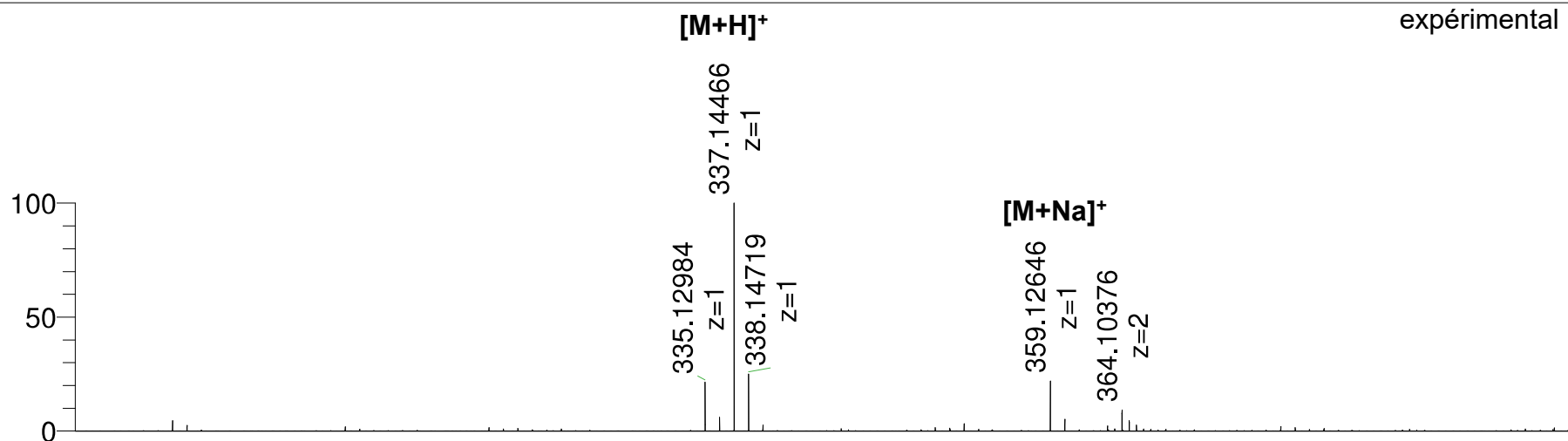
JH213_3 6 1 /opt/topspin3.5pl17/jhuss



19bq_wpcm_023503_1 #1-13 RT: 0.01-0.28 AV: 13 NL: 1.29E6

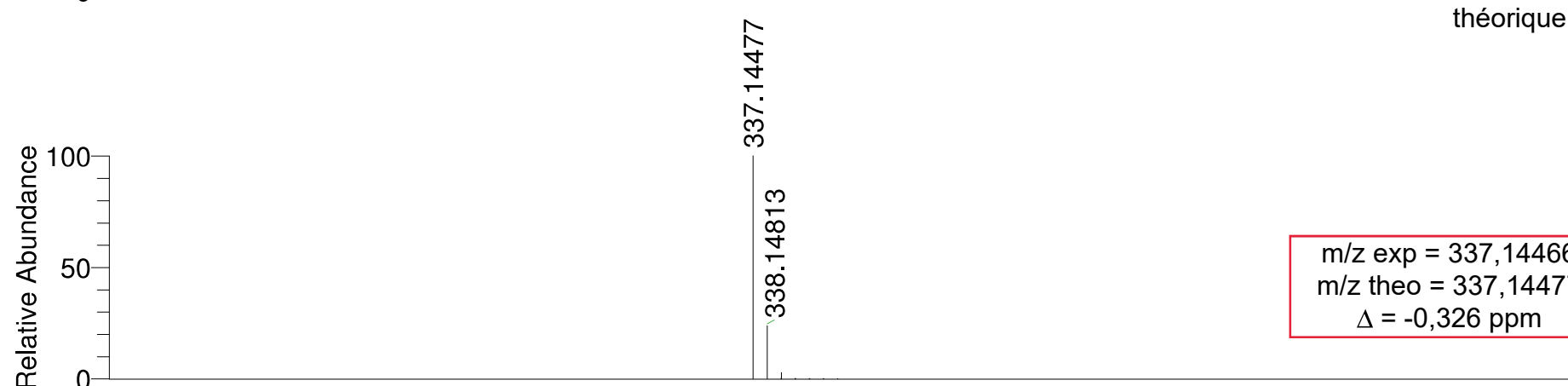
T: FTMS + p ESI Full ms [200.00-2000.00]





expérimental

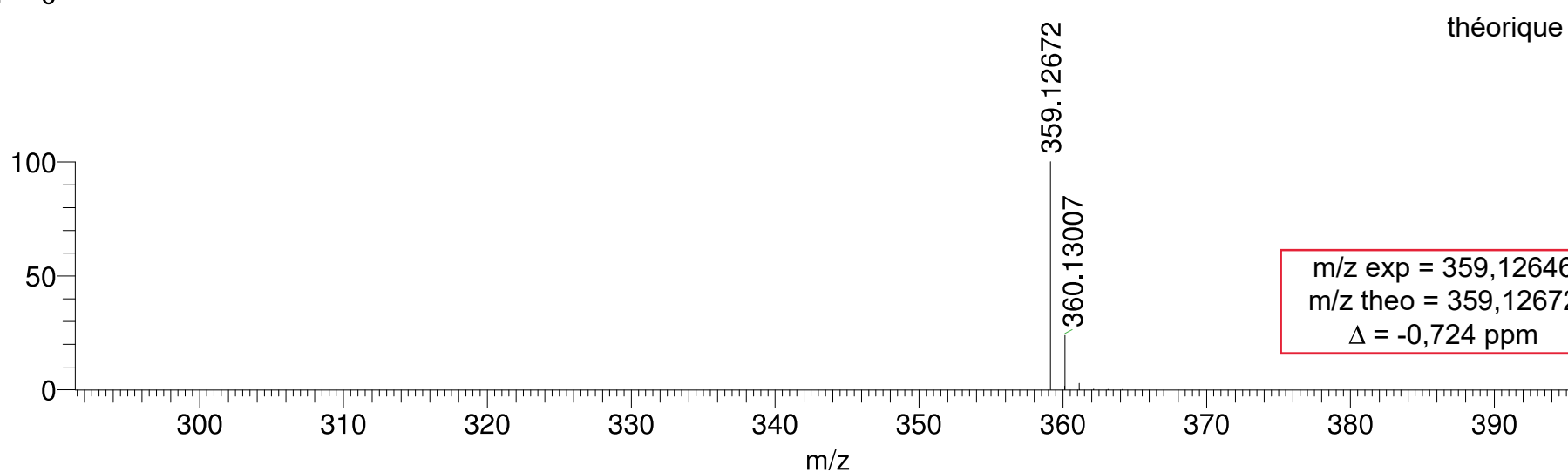
NL:
1.29E6
19bq_wpcm_023503_1
#1-13 RT: 0.01-0.28
AV: 13 T: FTMS + p
ESI Full ms
[200.00-2000.00]



théorique

NL:
7.76E5
C₂₂ H₁₆ N₄ +H:
C₂₂ H₁₇ N₄
pa Chrg 1

m/z exp = 337,14466
m/z theo = 337,14477
Δ = -0,326 ppm



théorique

NL:
7.76E5
C₂₂ H₁₆ N₄ +Na:
C₂₂ H₁₆ N₄ Na₁
pa Chrg 1

m/z exp = 359,12646
m/z theo = 359,12672
Δ = -0,724 ppm

m/z