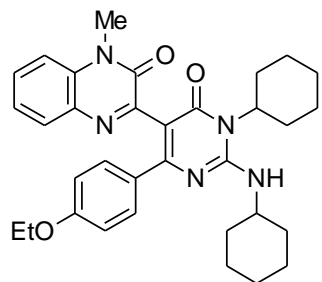
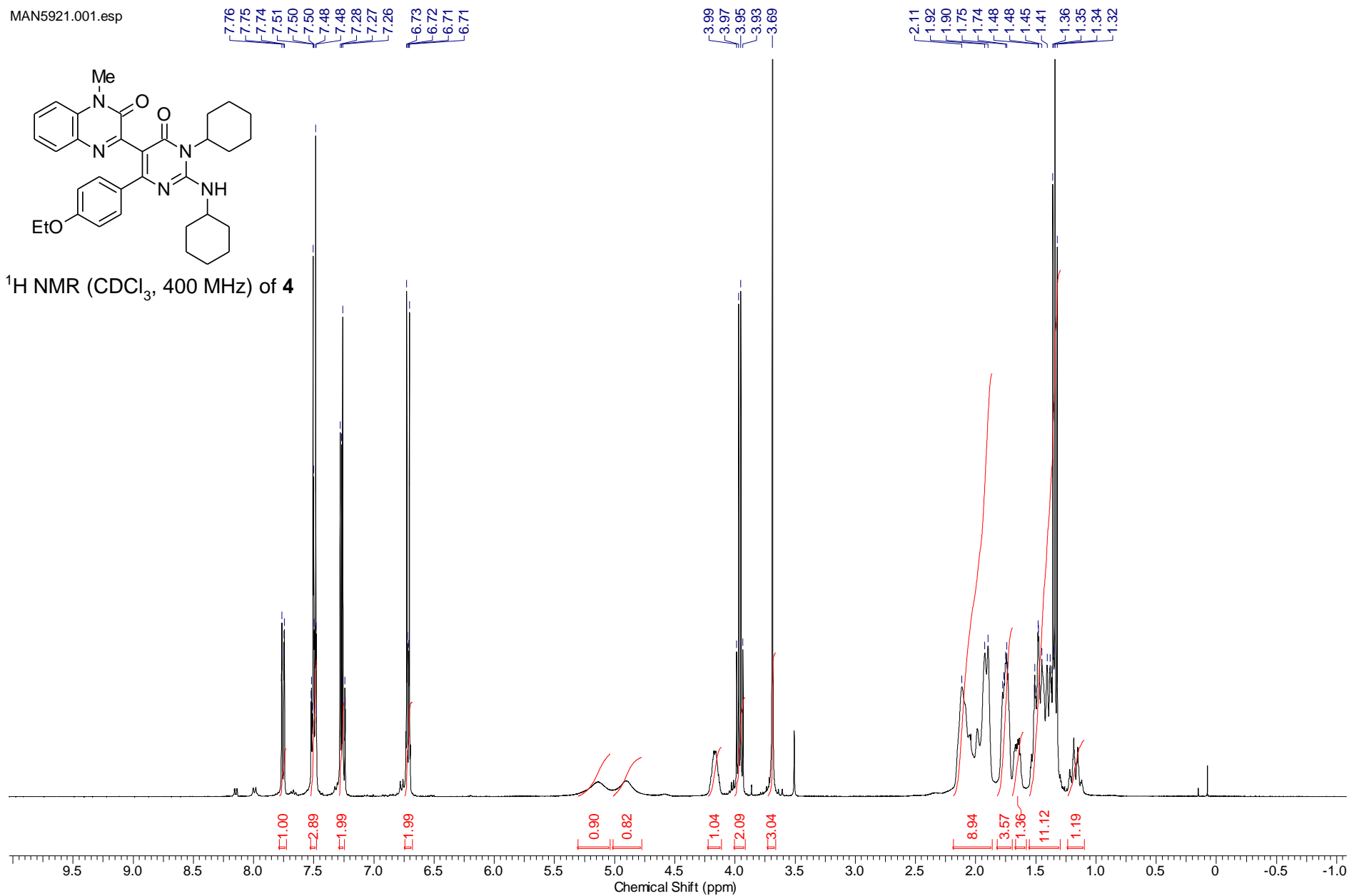


MAN5921.001.esp



^1H NMR (CDCl_3 , 400 MHz) of **4**



MAN5921.002.esp

162.79
159.76
156.87
154.83
151.95

133.58
133.09
133.05
130.38
130.26
130.01
129.95
123.14
113.92
113.87
113.36

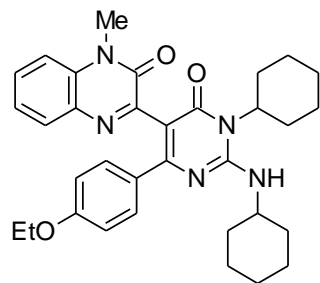
77.31
77.20
77.00
76.68

63.29

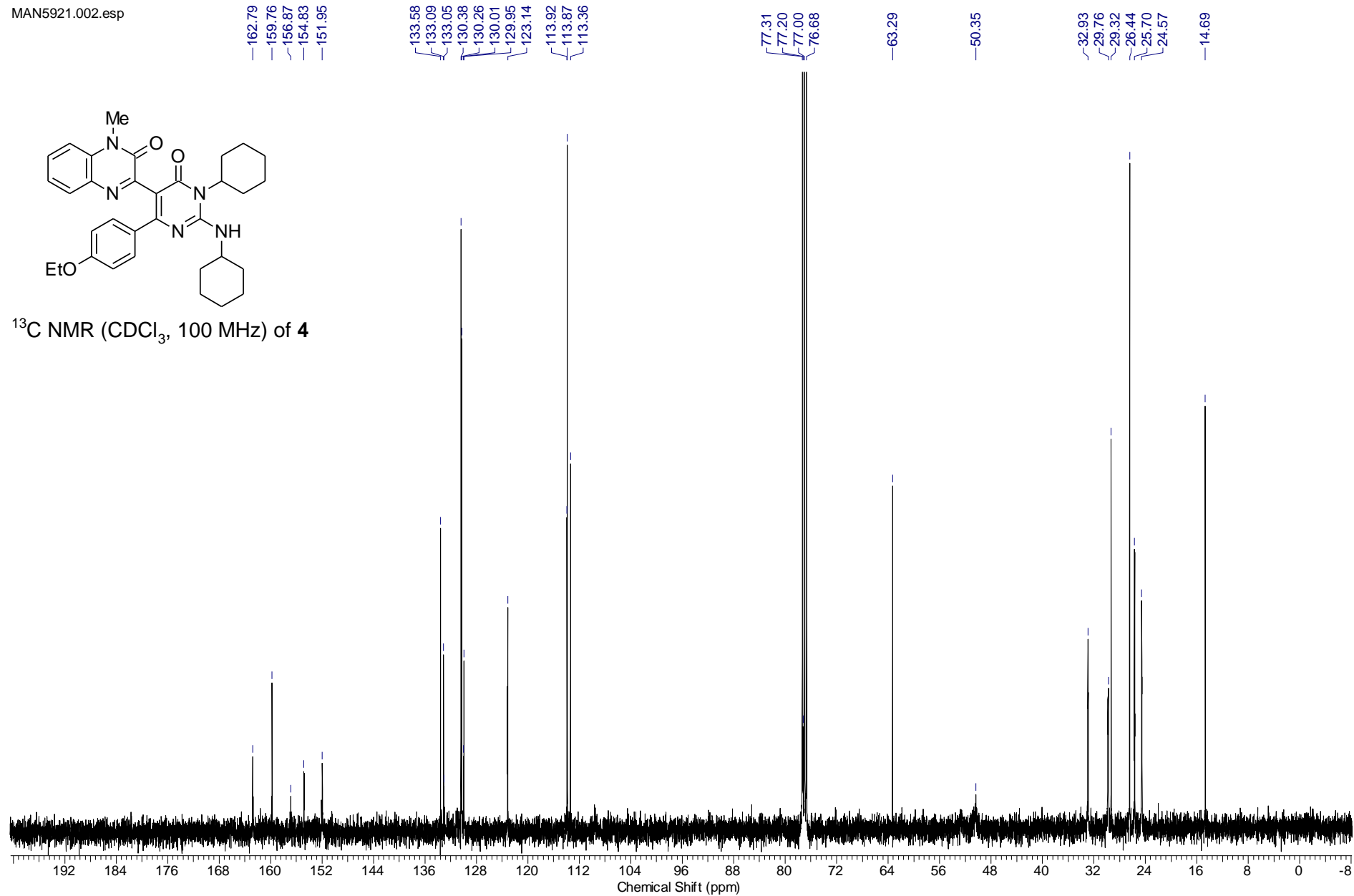
50.35

32.93
29.76
29.32
26.44
25.70
24.57

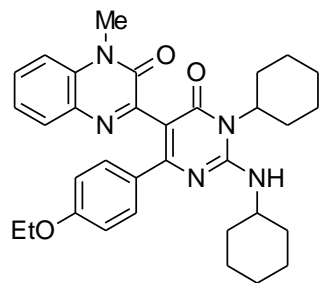
14.69



^{13}C NMR (CDCl_3 , 100 MHz) of **4**



MAN5921.003.esp



DEPT135 (CDCl₃, 100 MHz) of 4

