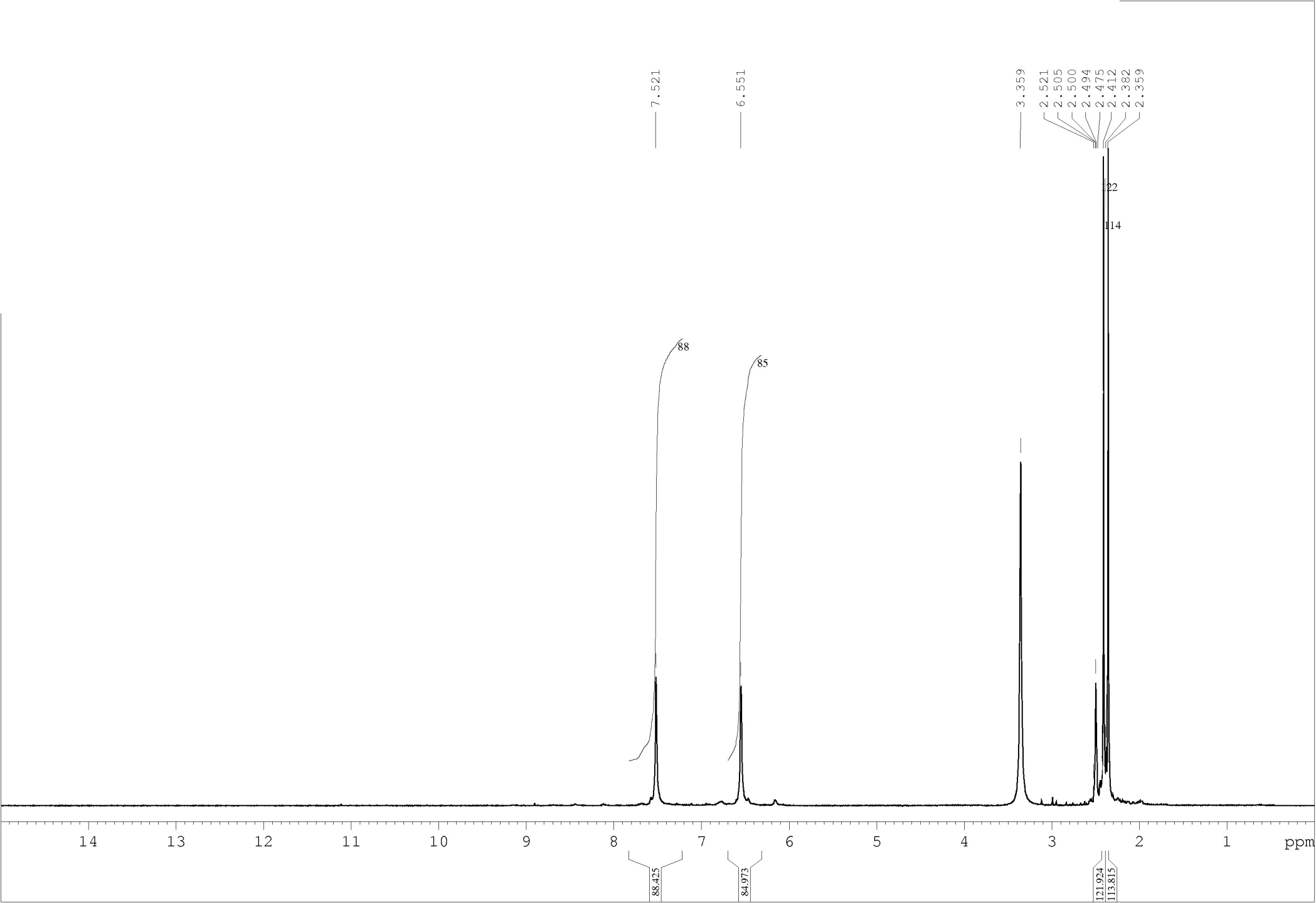


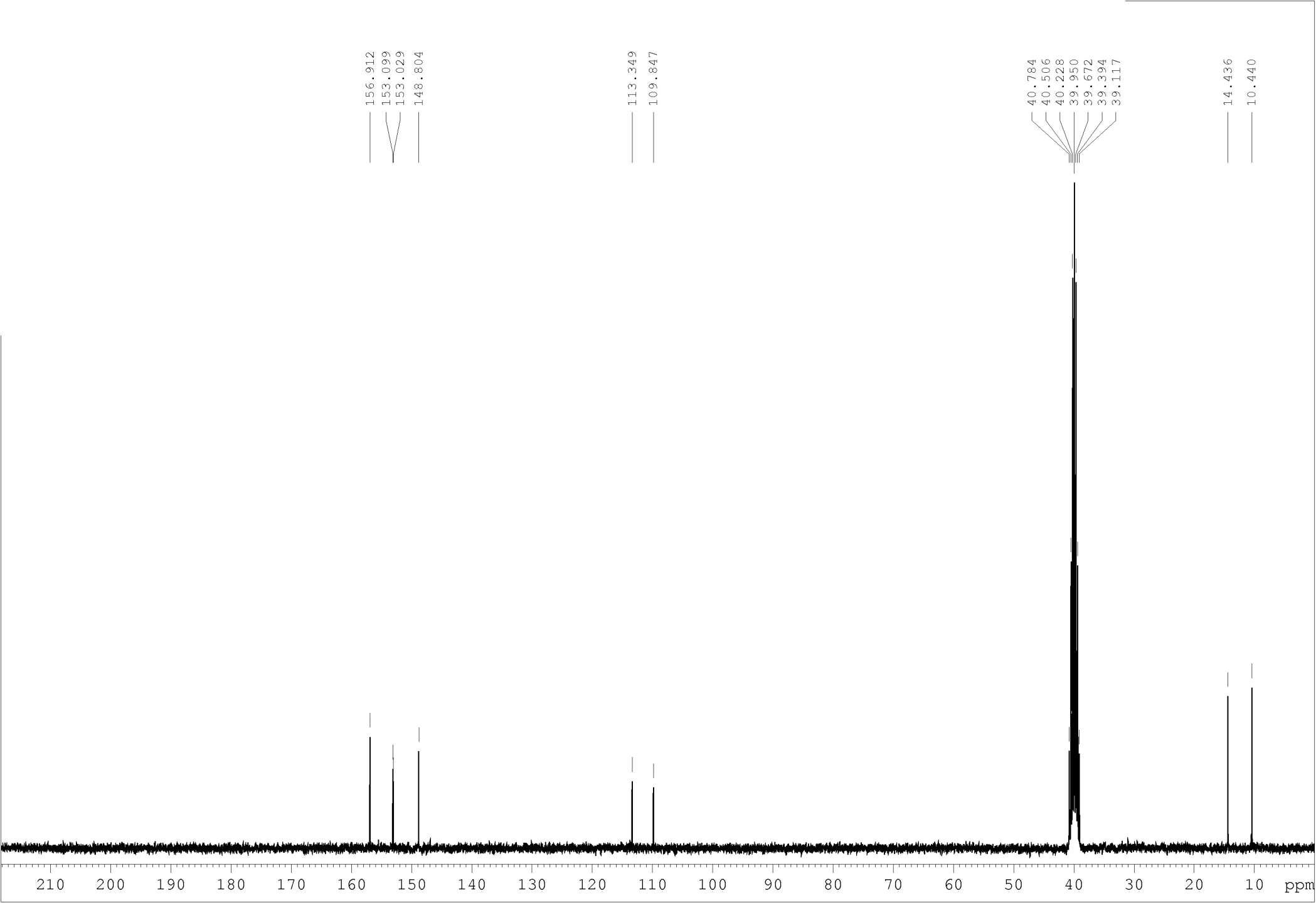
D:\Ил\Епишина Р-2.0

Епишина Р-2

КВr прессовка

09.06.2022





**Acquisition Parameter**

|             |            |                      |          |                  |           |
|-------------|------------|----------------------|----------|------------------|-----------|
| Source Type | ESI        | Ion Polarity         | Positive | Set Nebulizer    | 0.4 Bar   |
| Focus       | Not active |                      |          | Set Dry Heater   | 180 °C    |
| Scan Begin  | 50 m/z     | Set Capillary        | 4500 V   | Set Dry Gas      | 4.0 l/min |
| Scan End    | 1600 m/z   | Set End Plate Offset | -500 V   | Set Divert Valve | Waste     |

