

Short Note

# Dichloro{4-(4-chlorophenoxy)phthalazin-1-yl} methylphosphonic dichloride

Dyhia Amrane <sup>1</sup>, Omar Koumeri <sup>1</sup>, Patrice Vanelle <sup>1,2,\*</sup> and Nicolas Primas <sup>1,2,\*</sup>

<sup>1</sup> Aix Marseille Univ, CNRS, ICR UMR 7273, Equipe Pharmaco-Chimie Radicalaire, Faculté de Pharmacie, CEDEX 05, 13385 Marseille, France

<sup>2</sup> APHM, Hôpital Conception, Service Central de la Qualité et de l'Information Pharmaceutiques, 13005 Marseille, France

\* Correspondence: patrice.vanelle@univ-amu.fr (P.V.); nicolas.primas@univ-amu.fr (N.P.)

Figure S1. <sup>1</sup>H NMR spectra of 1-(4-Chlorophenoxy)-4-methylphthalazine

Figure S2. <sup>13</sup>C NMR spectra of 1-(4-Chlorophenoxy)-4-methylphthalazine

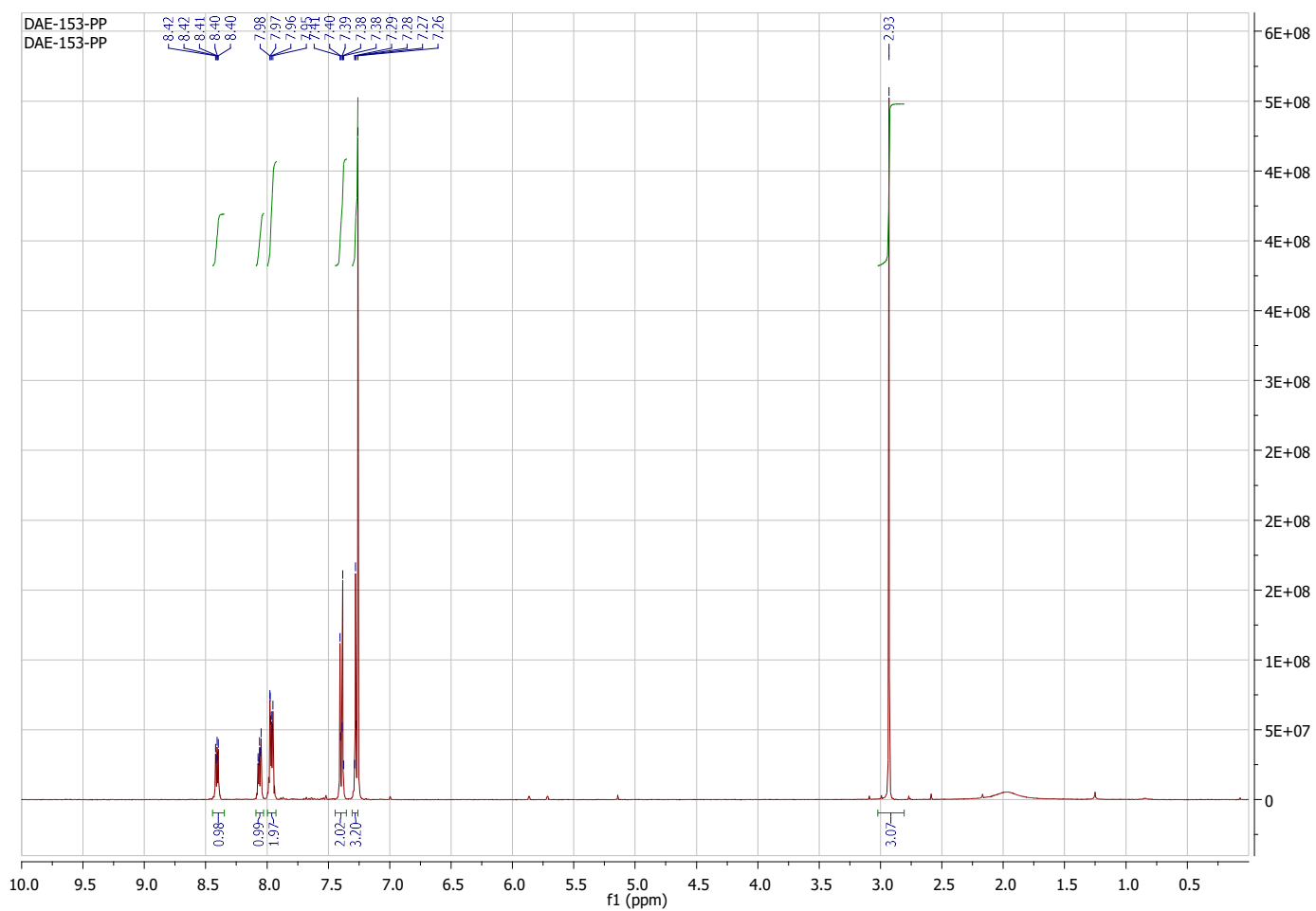
Figure S3. HRMS (ESI) spectra of 1-(4-Chlorophenoxy)-4-methylphthalazine

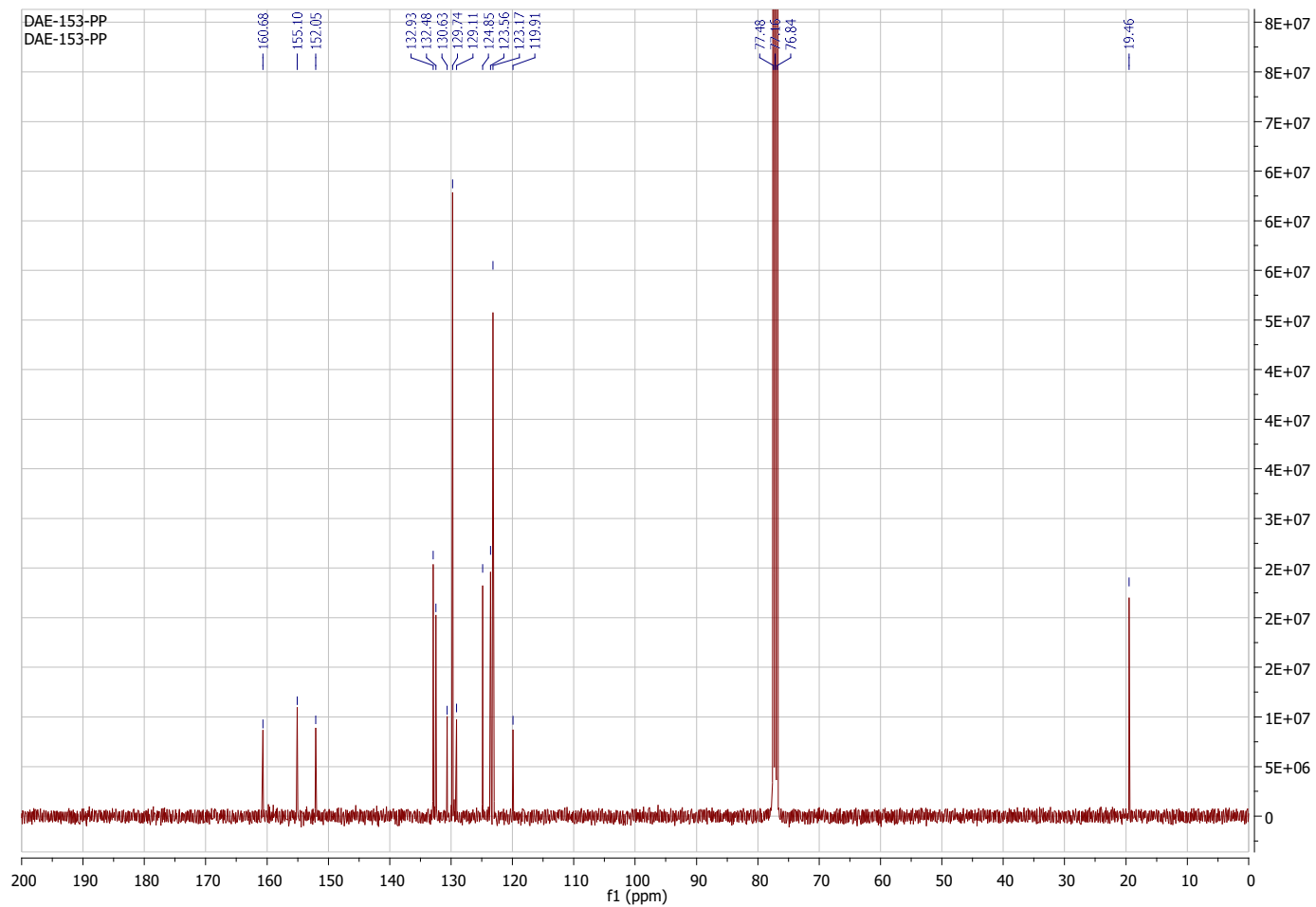
Figure S4. <sup>1</sup>H NMR spectra of Dichloro(4-(4-chlorophenoxy)phthalazin-1-yl)methyl)phosphonic dichloride

Figure S5. <sup>13</sup>C NMR spectra of Dichloro(4-(4-chlorophenoxy)phthalazin-1-yl)methyl)phosphonic dichloride

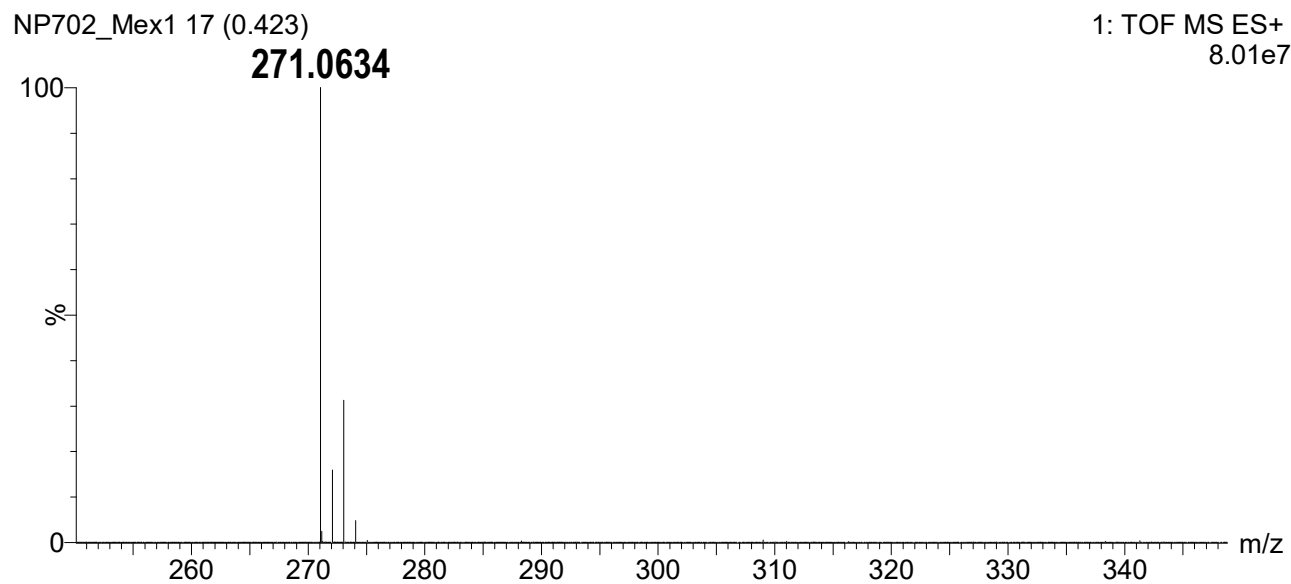
Figure S6. <sup>31</sup>P NMR spectra of Dichloro(4-(4-chlorophenoxy)phthalazin-1-yl)methyl)phosphonic dichloride

Figure S7. HRMS (ESI) spectra of Dichloro(4-(4-chlorophenoxy)phthalazin-1-yl)methyl)phosphonic dichloride

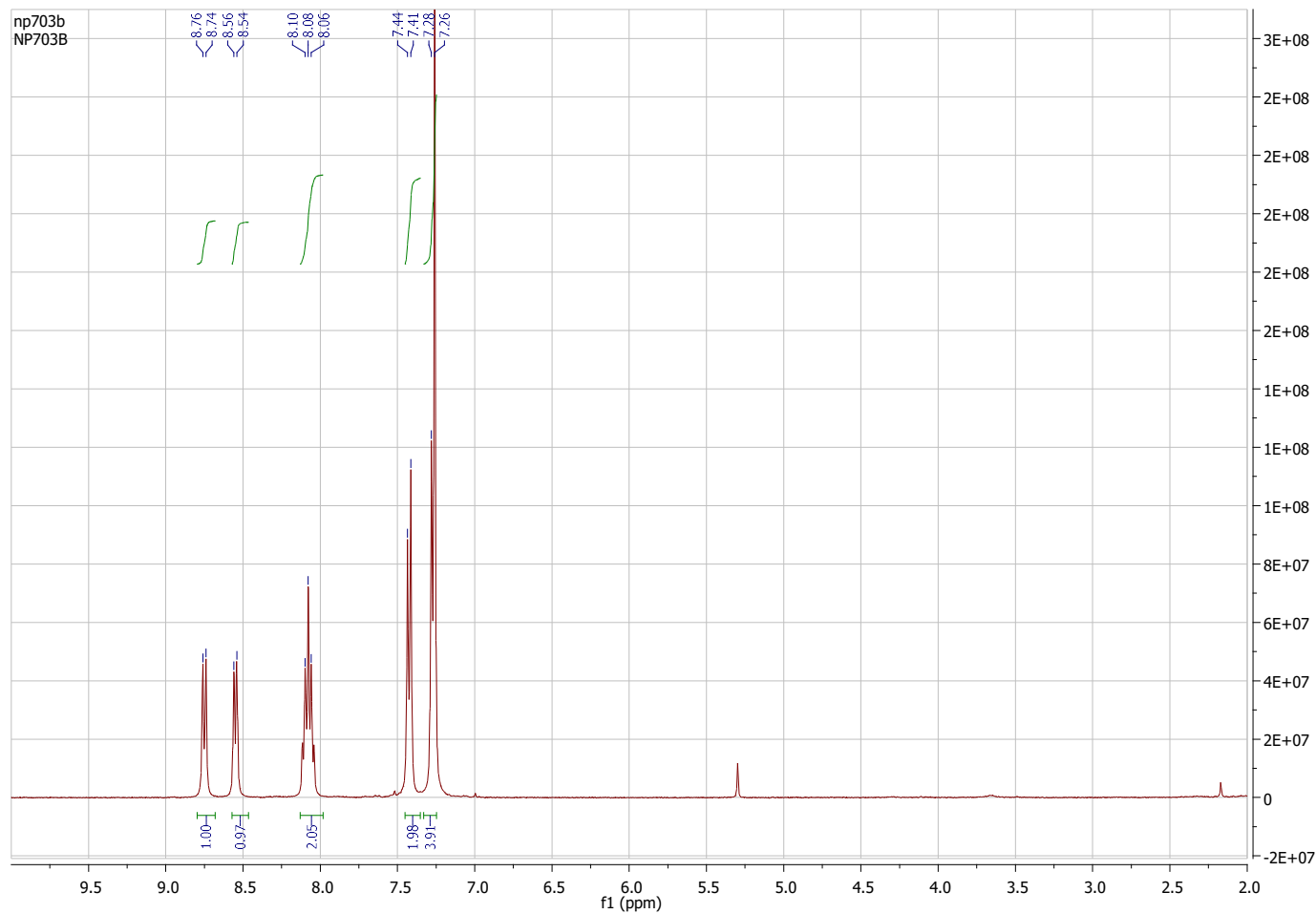
1. Figure S1.  $^1\text{H}$  NMR spectra of 1-(4-Chlorophenoxy)-4-methylphthalazine

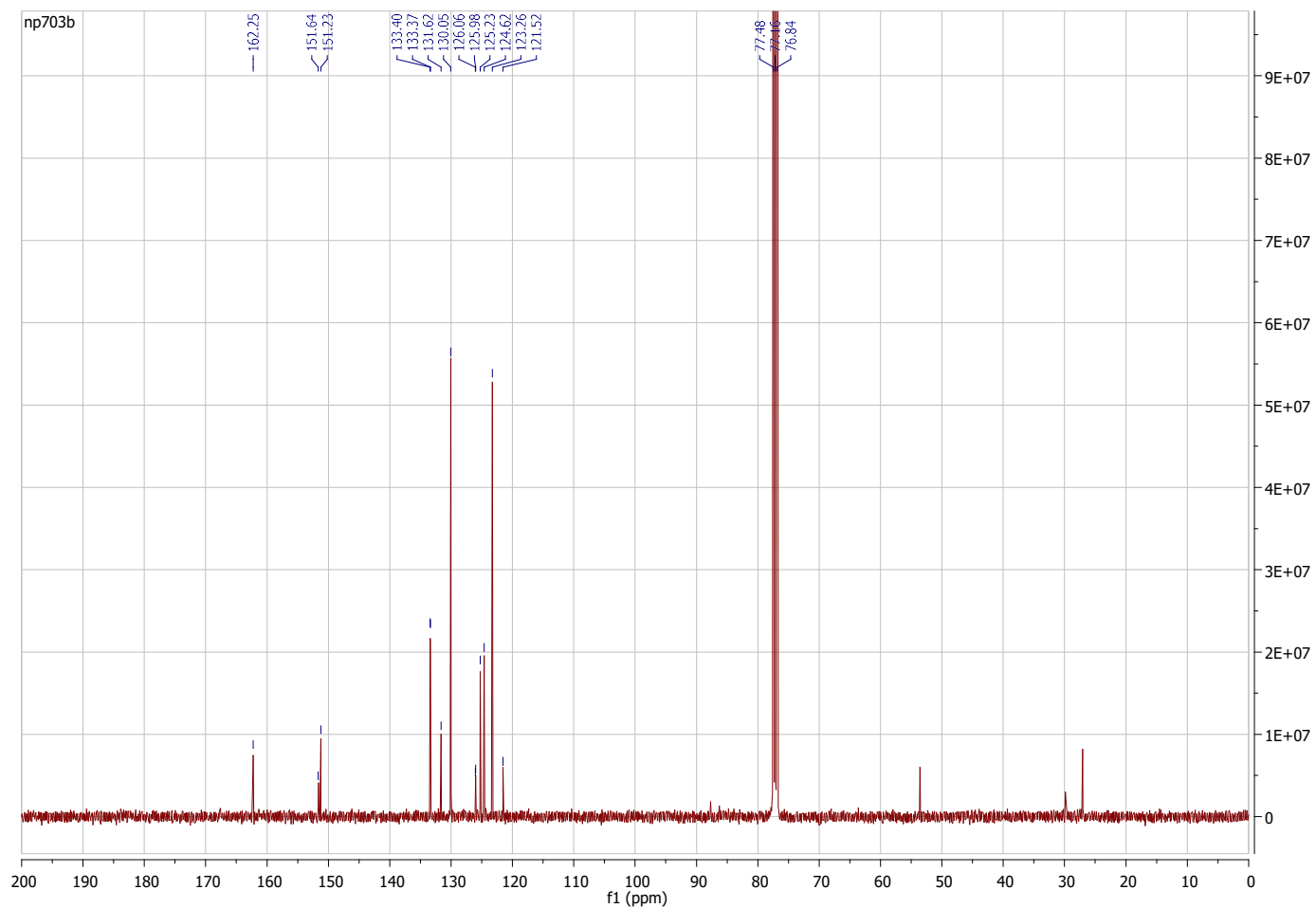
2. Figure S2.  $^{13}\text{C}$  NMR spectra of 1-(4-Chlorophenoxy)-4-methylphthalazine

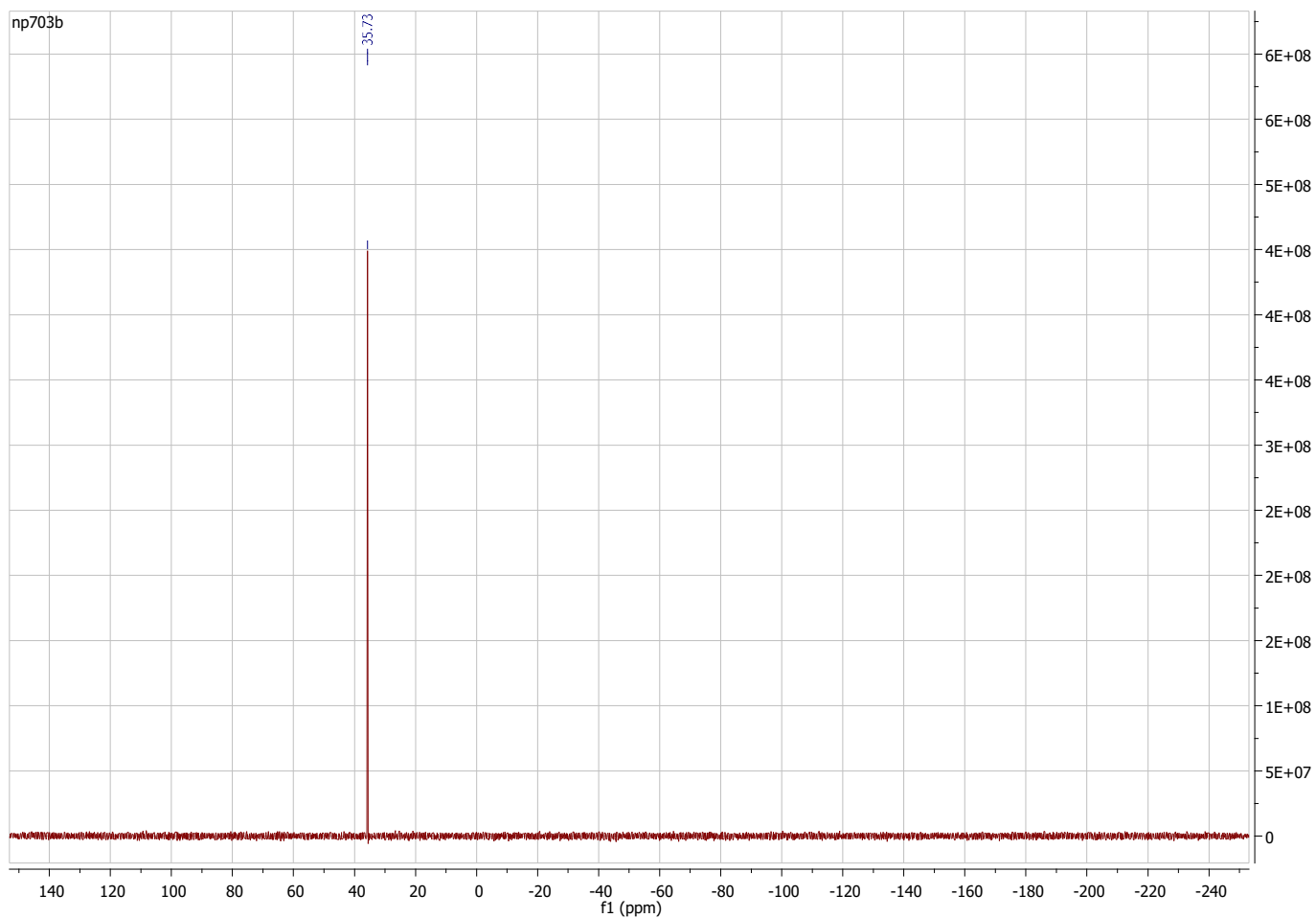
## 3. Figure S3. HRMS (ESI) spectra of 1-(4-Chlorophenoxy)-4-methylphthalazine

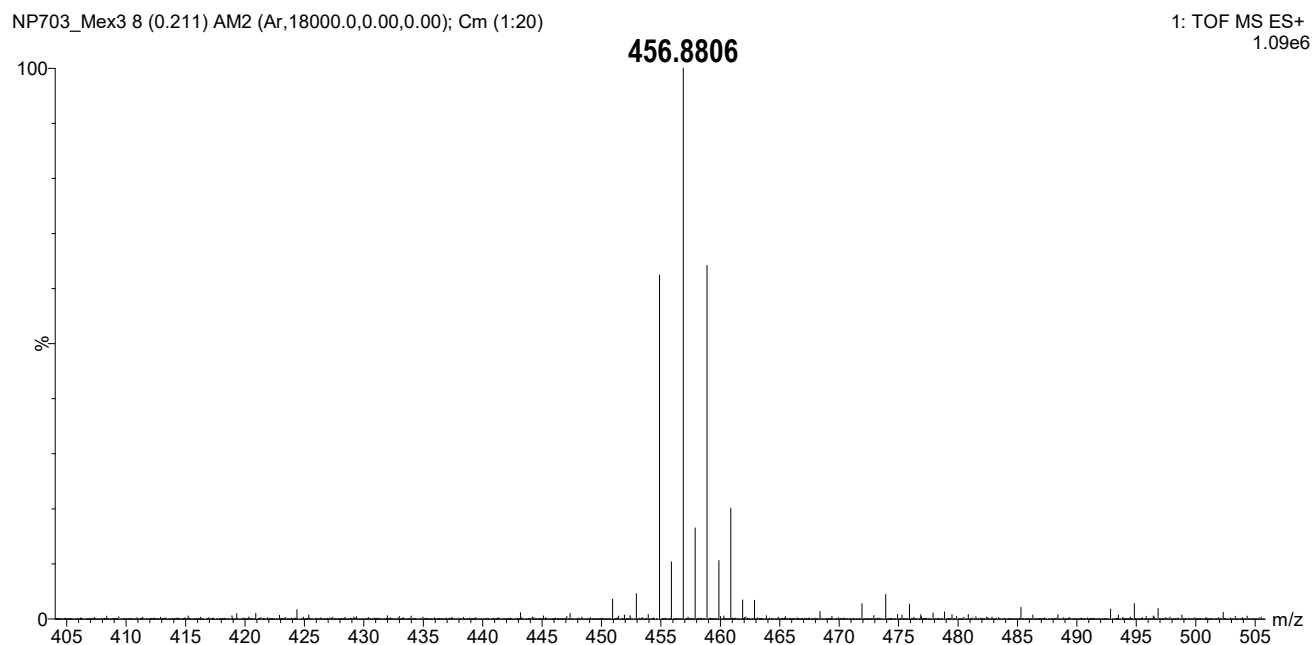


		m/z	Error (mDa)	Error (ppm)
Theoretical value		271.0633	-	-
Experimental values	1	271.0634	+ 0.1	+ 0.4
	2	271.0632	- 0.1	- 0.4
	3	271.0631	- 0.2	- 0.7

4. Figure S4. <sup>1</sup>H NMR spectra of Dichloro(4-(4-chlorophenoxy)phthalazin-1-yl)methyl)phosphonic dichloride

5. Figure S5.  $^{13}\text{C}$  NMR spectra of Dichloro(4-(4-chlorophenoxy)phthalazin-1-yl)methyl)phosphonic dichloride

**6. Figure S6.  $^{31}\text{P}$  NMR spectra of Dichloro(4-(4-chlorophenoxy)phthalazin-1-yl)methyl)phosphonic dichloride**

**7. Figure S7. HRMS (ESI) spectra of Dichloro(4-(4-chlorophenoxy)phthalazin-1-yl)methyl)phosphonic dichloride**

		m/z	Error (mDa)	Error (ppm)
Theoretical value		456.8810	-	-
Experimental values	1	456.8805	-0.5	-1.1
	2	456.8805	-0.5	-1.1
	3	456.8806	-0.4	-0.9