

Figure S1. ¹H-NMR spectrum of compound 2.

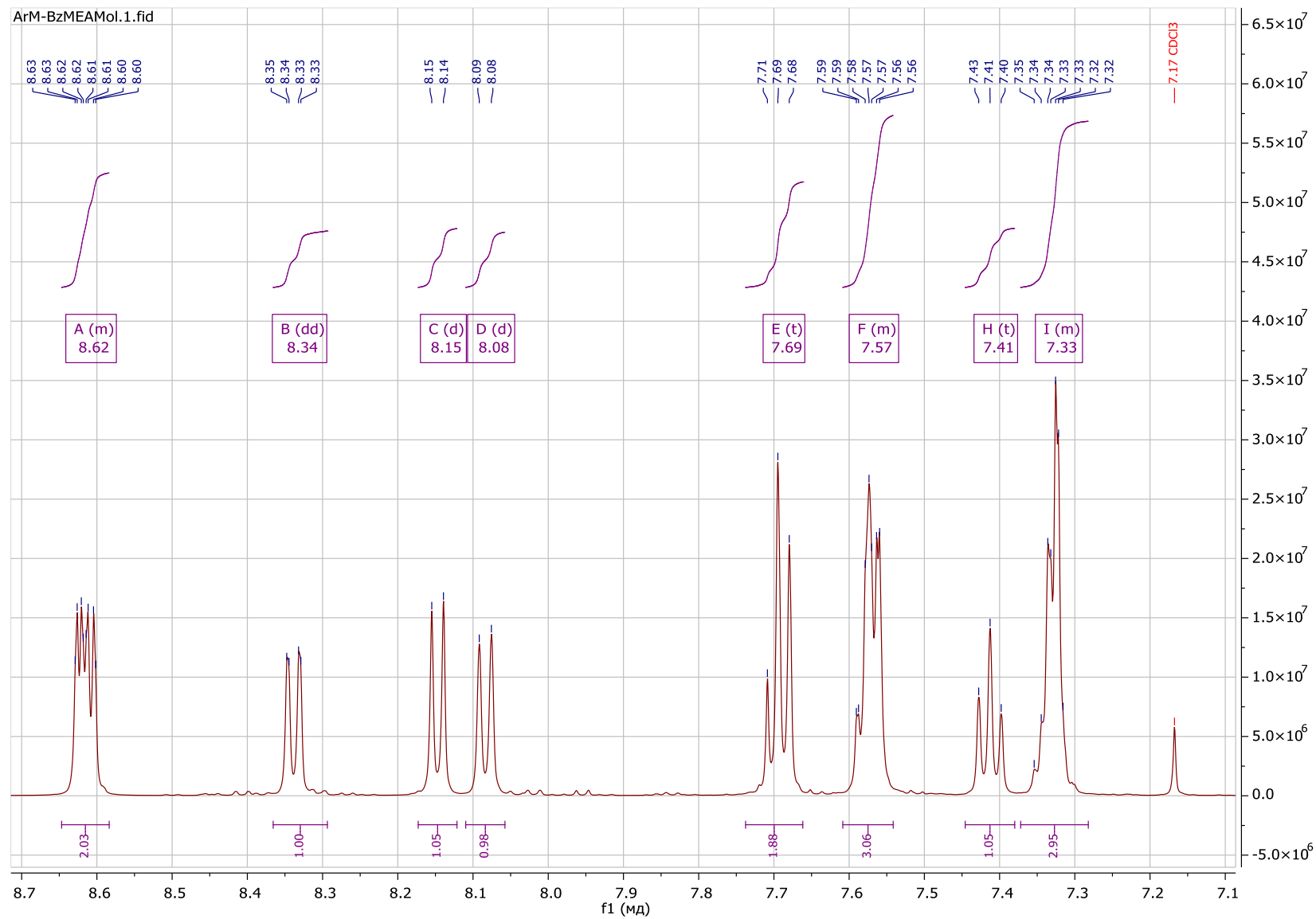


Figure S2. ¹H-NMR spectrum of compound 2 (aromatic region).

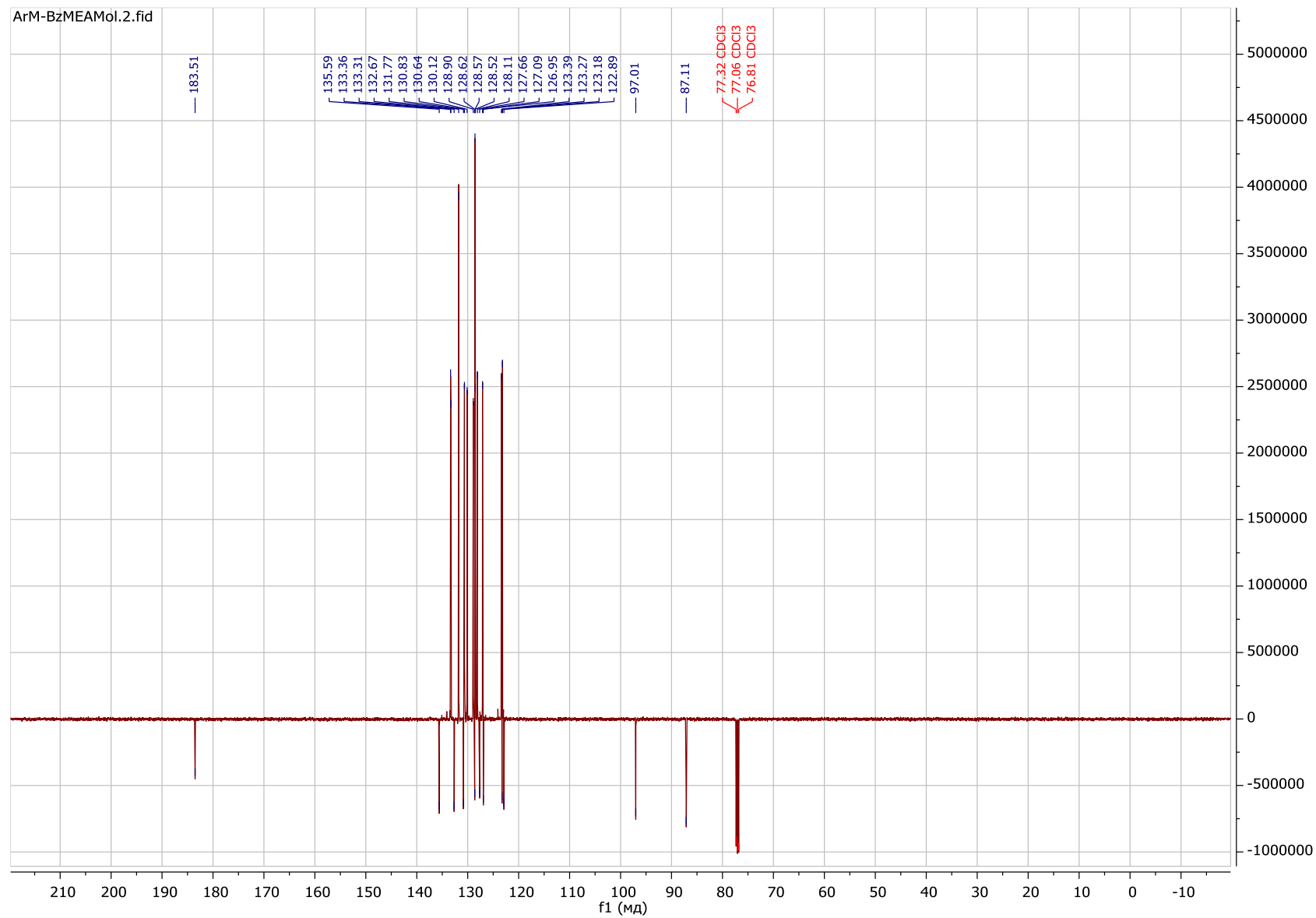


Figure S3. APT spectrum of compound 2.

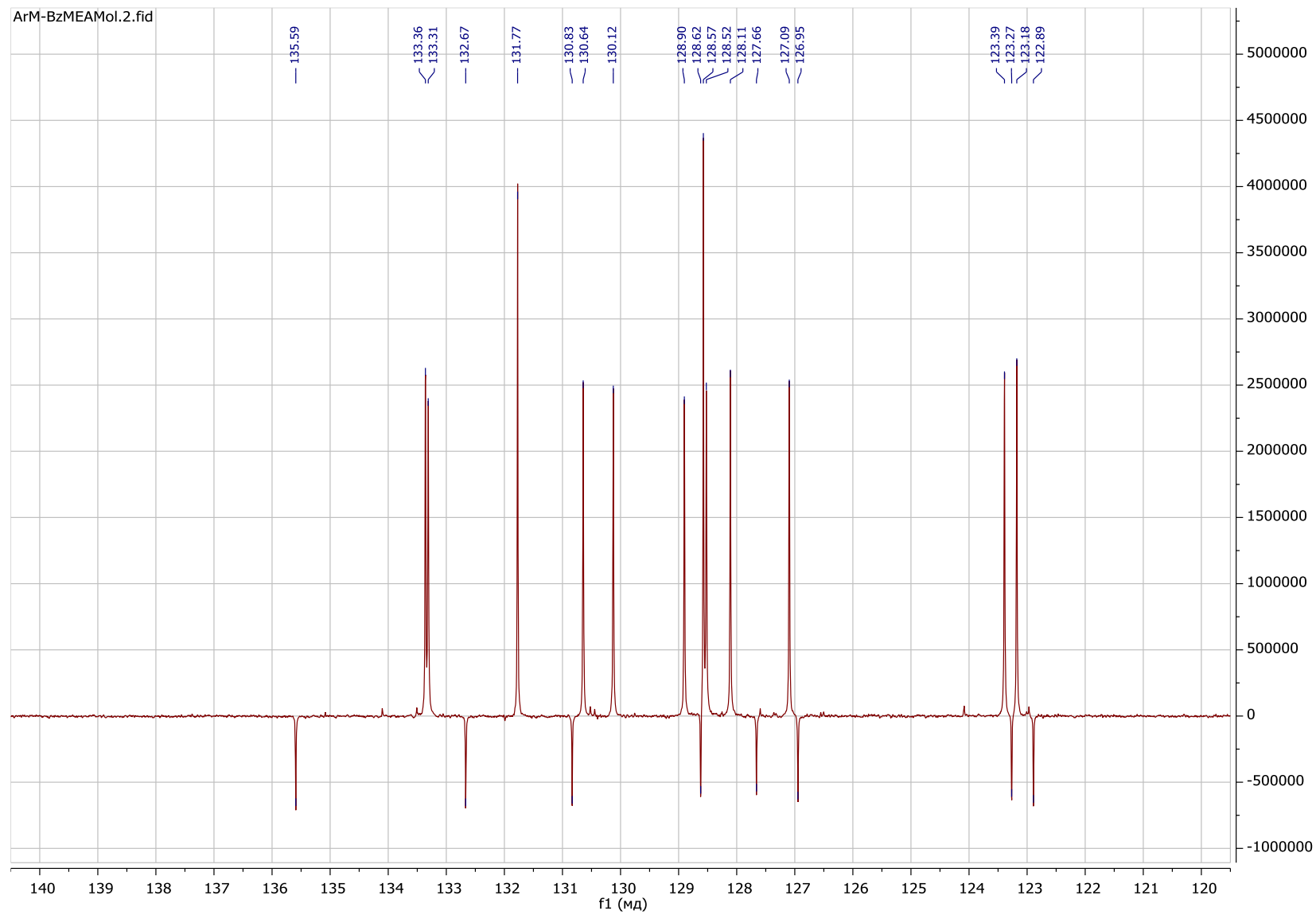


Figure S4. APT spectrum of compound **2** (120 – 140 ppm).

MEA-1

[M+H] ⁺ calc	[M+H] ⁺ found	Δ
331,1117	331,1115	0,0002

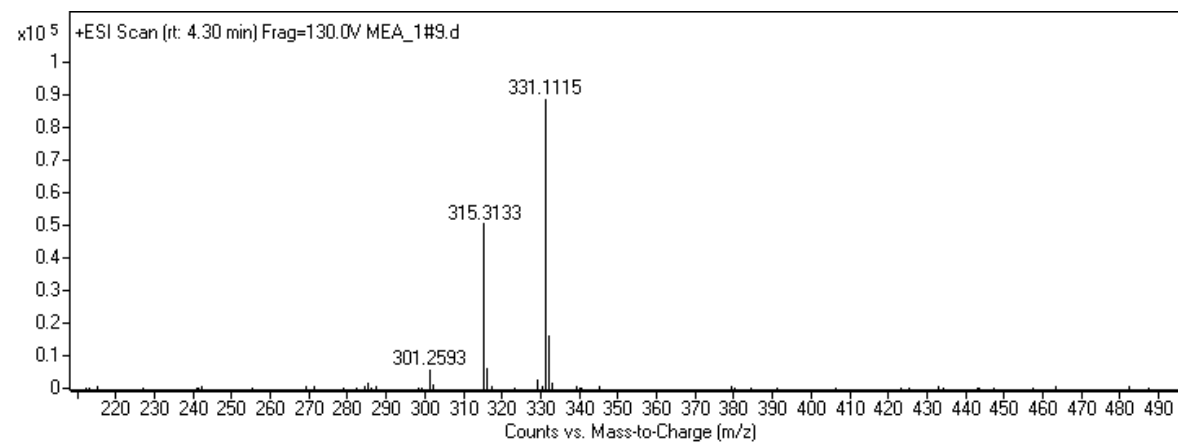


Figure S5. HRMS (ESI) data for compound 2.

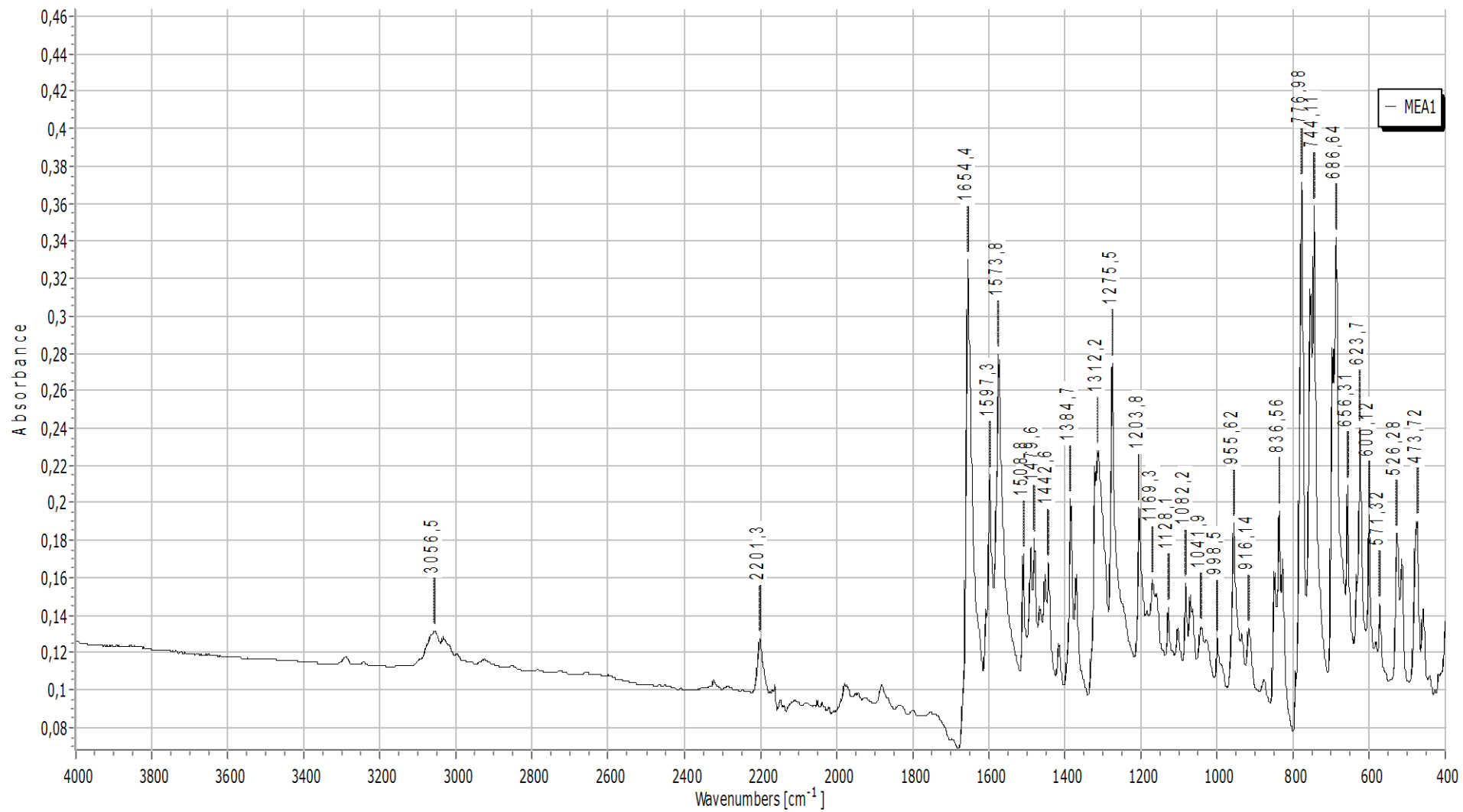


Figure S6. IR spectrum of compound 2.