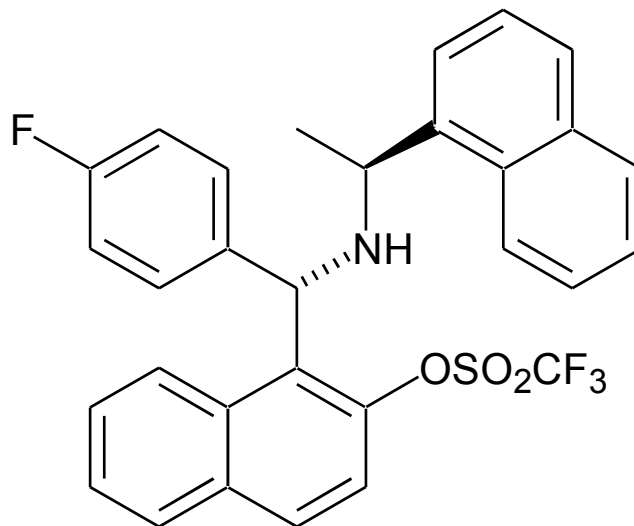
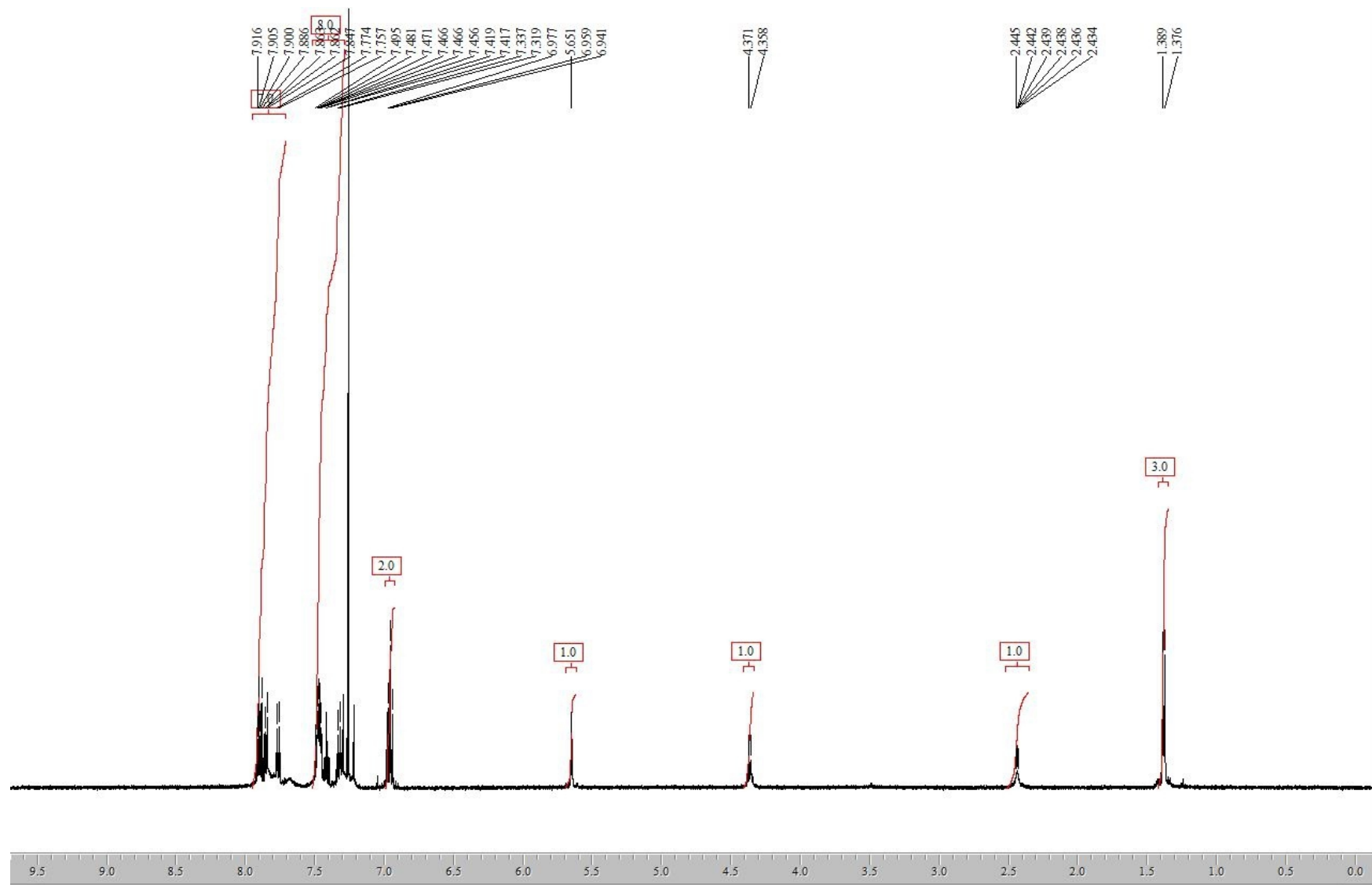


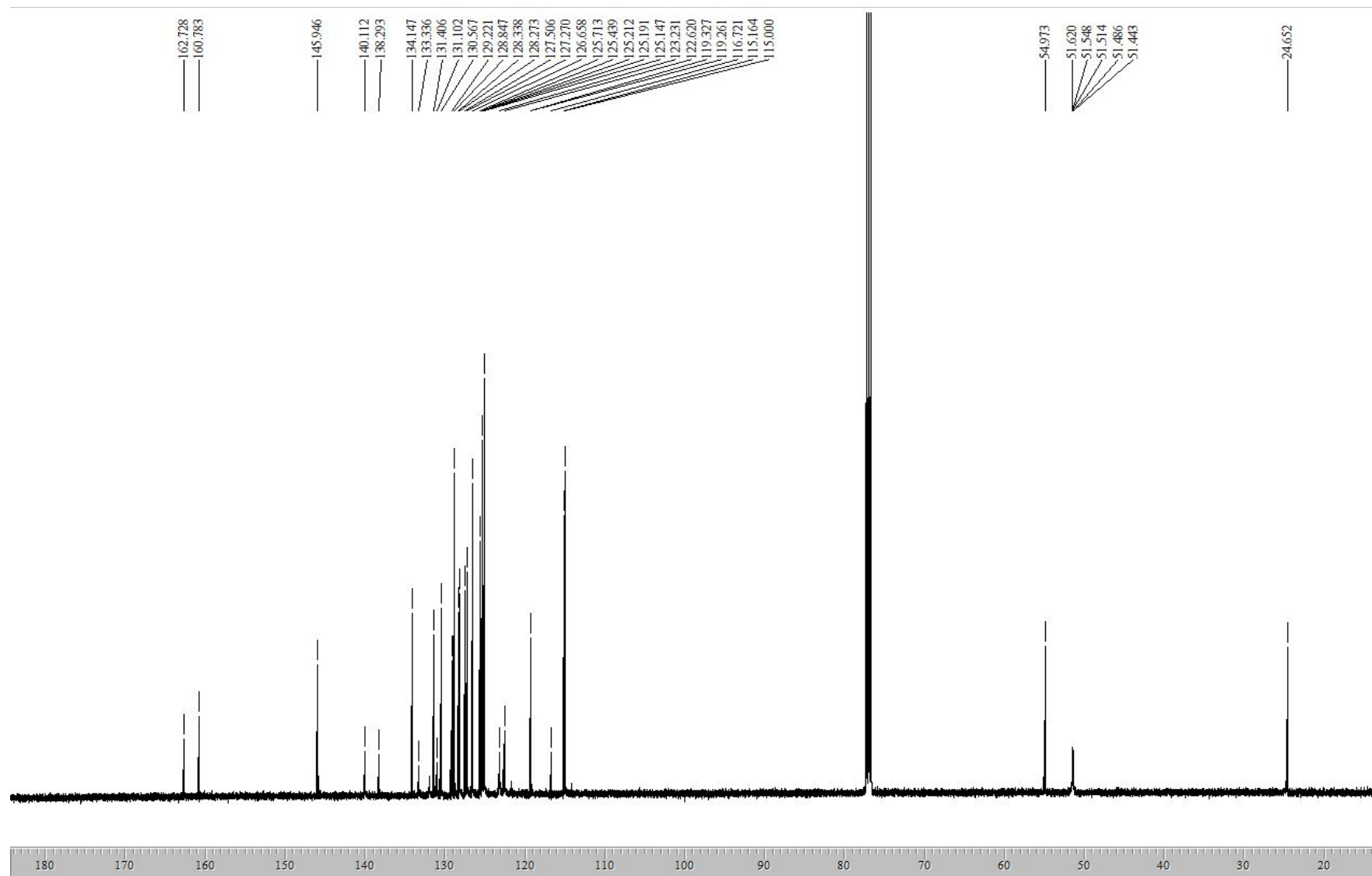
# Spectral properties for 1-[(1*S*)-(4-Fluorophenyl)-((1'*S*)-1'-naphthalen-1-yl-ethylamino)-methyl]-naphthalen-2-trifluoromethanesulfonate

Cosimo Cardellicchio and Maria Annunziata M. Capozzi



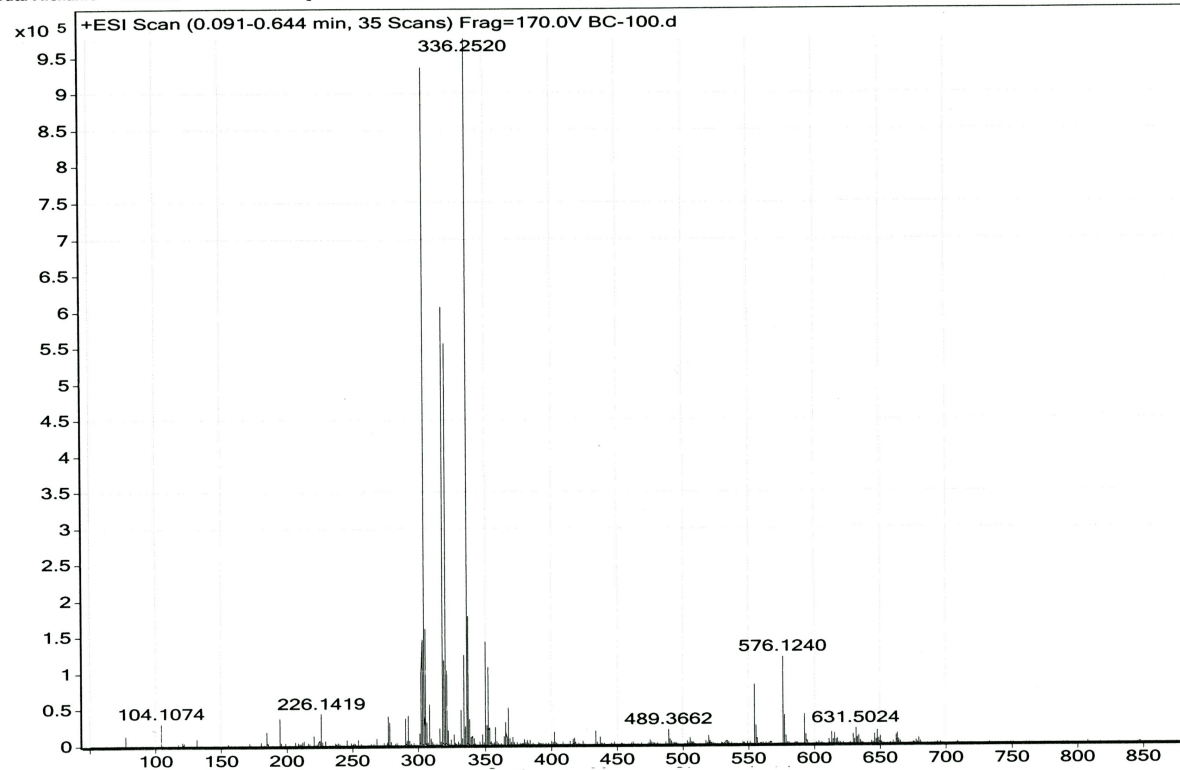


**500 MHz  $^1\text{H}$ -NMR spectrum of 1-[(1*S*)-(4-Fluorophenyl)-((1'*S*)-1'-naphthalen-1-yl-ethylamino)-methyl]-naphthalen-2-trifluoromethanesulfonate**



**125 MHz C(13)-NMR spectrum of 1-[(1S)-(4-Fluorophenyl)-((1'S)-1'-naphthalen-1-yl-ethylamino)-methyl]-naphthalen-2-trifluoromethanesulfonate**

Sample Name	See data file	Position		Instrument Name	Instrument 1	User Name	QTOF-HP\admin
Inj Vol	-1	InjPosition		SampleType	Sample	IRM Calibration Status	Success
Data Filename	BC-100.d	ACQ Method	infusione-10uL-min.m	Comment		Acquired Time	4/18/2023 12:01:54 PM



QTOF MS Spectrum of 1-[(1S)-(4-Fluorophenyl)-((1'S)-1'-naphthalen-1-yl-ethylamino)-methyl]-naphthalen-2-trifluoromethanesulfonate