

Changes in Heterotrophic Picoplankton Community Structure after Induction of a Phytoplankton Bloom under Different Light Regimes

Hera Karayanni¹, Konstantinos A. Kormas², Maria Moustaka-Gouni³, Ulrich Sommer⁴

¹Department of Biological Applications and Technology, University of Ioannina, 451 10 Ioannina, Greece, hkaray@uoi.gr

²Department of Ichthyology and Aquatic Environment, School of Agricultural Sciences, University of Thessaly, 384 46 Volos, Greece, kkormas@uth.gr

³School of Biology, Department of Botany, Aristotle University of Thessaloniki, 541 24, mmustaka@bio.auth.gr

⁴Helmholtz Center for Ocean Research (GEOMAR), Düsternbrooker Weg 20, 24105 Kiel, Germany, usommer@geomar.de

Table S1. Relative abundance (%) of the most abundant ($\geq 1\%$) OTUs. J: January, F: February, C: control (baseline light intensity), H: high light intensity.

	JC				JH				FC				FH			
	d1	d11	d15	d15	d1	d11	d15	d15	d1	d11	d15	d15	d1	d11	d15	d15
<i>Otu0001</i>	22.9	7.6	6.5	13.4	22.1	17.1	24.2	10.7	20.1	8.0	14.2	32.3	15.0	8.9	22.6	55.7
<i>Otu0002</i>	18.4	58.4	21.8	43.9	16.5	71.0	57.1	4.0	19.3	66.2	39.0	5.5	12.3	68.6	37.1	2.1
<i>Otu0003</i>	2.4				2.9				13.2							
<i>Otu0004</i>	11.6	1.7	1.5	4.0	15.0				12.0		1.3	4.2	15.8	1.6	4.5	2.4
<i>Otu0005</i>	2.0				2.4				8.5							
<i>Otu0006</i>	1.4			1.0	2.8				2.1			2.7	2.2			3.8
<i>Otu0007</i>	3.1		1.1		2.7			2.2	1.3				2.3			
<i>Otu0008</i>		1.6	1.9	5.4	1.3			3.6	1.0				1.4			
<i>Otu0009</i>	4.1		5.3		3.9			7.9	1.4				5.5			
<i>Otu0011</i>		2.9	2.4				2.1			1.3	7.2	8.4		3.5	3.9	
<i>Otu0012</i>	1.1			1.3	1.6				1.3				1.9			
<i>Otu0014</i>	1.2				1.5			2.0					2.1			
<i>Otu0015</i>	1.0												1.1			
<i>Otu0018</i>													1.3			
<i>Otu0019</i>	3.7		1.0		2.0			2.8					5.5			
<i>Otu0020</i>	1.8		2.5					18.4				1.4	1.8			
<i>Otu0021</i>				1.0								1.5			1.6	1.7
<i>Otu0024</i>	1.3				1.0			1.7					3.3			
<i>Otu0032</i>		4.6	1.2	2.9						1.2	3.1	8.0		1.7	5.4	4.8
<i>Otu0036</i>	1.6	1.2	4.1	1.0	1.4			10.6					2.6			
<i>Otu0040</i>	1.2		2.2					1.9					1.3			
<i>Otu0043</i>	1.5				1.1			1.6					1.7			
<i>Otu0044</i>			1.4					2.4								
<i>Otu0046</i>												1.0				
<i>Otu0061</i>																2.1

<i>Otu0074</i>									1.1
<i>Otu0083</i>		7.4	1.2		6.2				1.4
<i>Otu0084</i>								3.2	1.1
<i>Otu0097</i>			1.1		2.0				
<i>Otu0105</i>		1.7	1.3				1.5		1.4
<i>Otu0119</i>	1.6			2.5				3.1	
<i>Otu0123</i>									1.4
<i>Otu0131</i>									1.4
<i>Otu0137</i>		2.6	1.3						1.6
<i>Otu0140</i>					1.6		1.4		
<i>Otu0142</i>			1.0		3.8		3.3		
<i>Otu0147</i>		3.1	2.1	7.5	3.2	7.1	16.0	5.6	2.0 6.1 5.9
<i>Otu0161</i>									2.1
<i>Otu0163</i>									1.0
<i>Otu0189</i>							1.0		
<i>Otu0244</i>					1.3				
<i>Otu0329</i>			7.5						
<i>Otu0619</i>				1.6		1.0	3.6	7.9	7.6
<i>Otu0728</i>							1.3		
<i>Otu0746</i>			1.5						
<i>Otu1431</i>									1.4

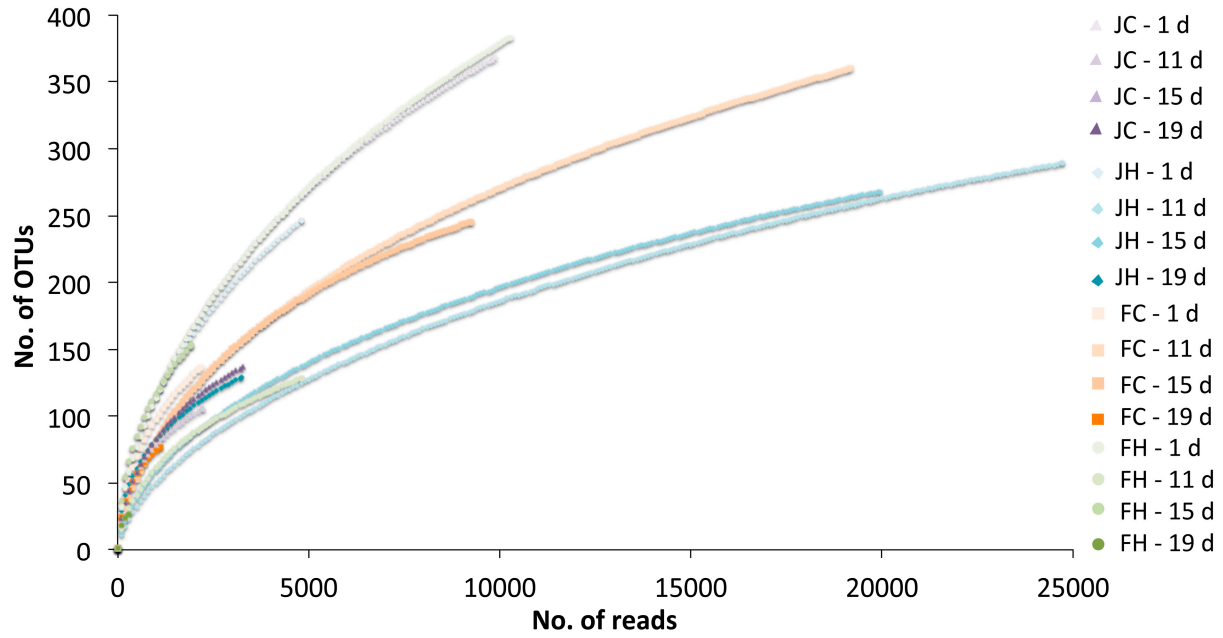


Figure S1. Rarefaction curves of Operational Taxonomic Units (OTUs) numbers against the number of high-quality reads, at ≥ 97 similarity, in the studied mesocosms.

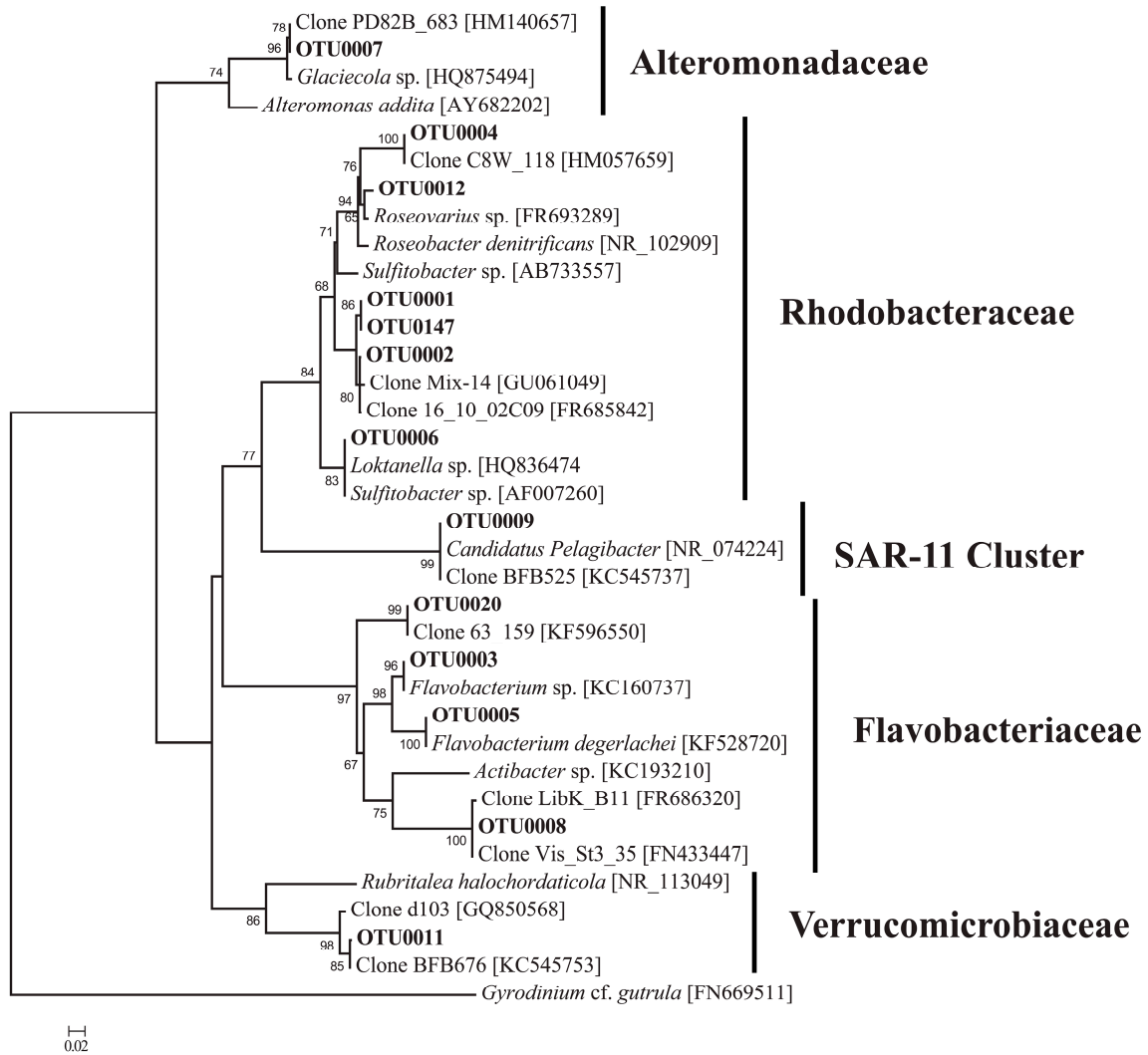


Figure S2. Maximum likelihood phylogenetic tree of the Bacteria most dominant operational taxonomic units (OTU) and the ones found in all four mesocosms all sampling points (in bold). Bootstrap values were estimated from 1,000 replicates.

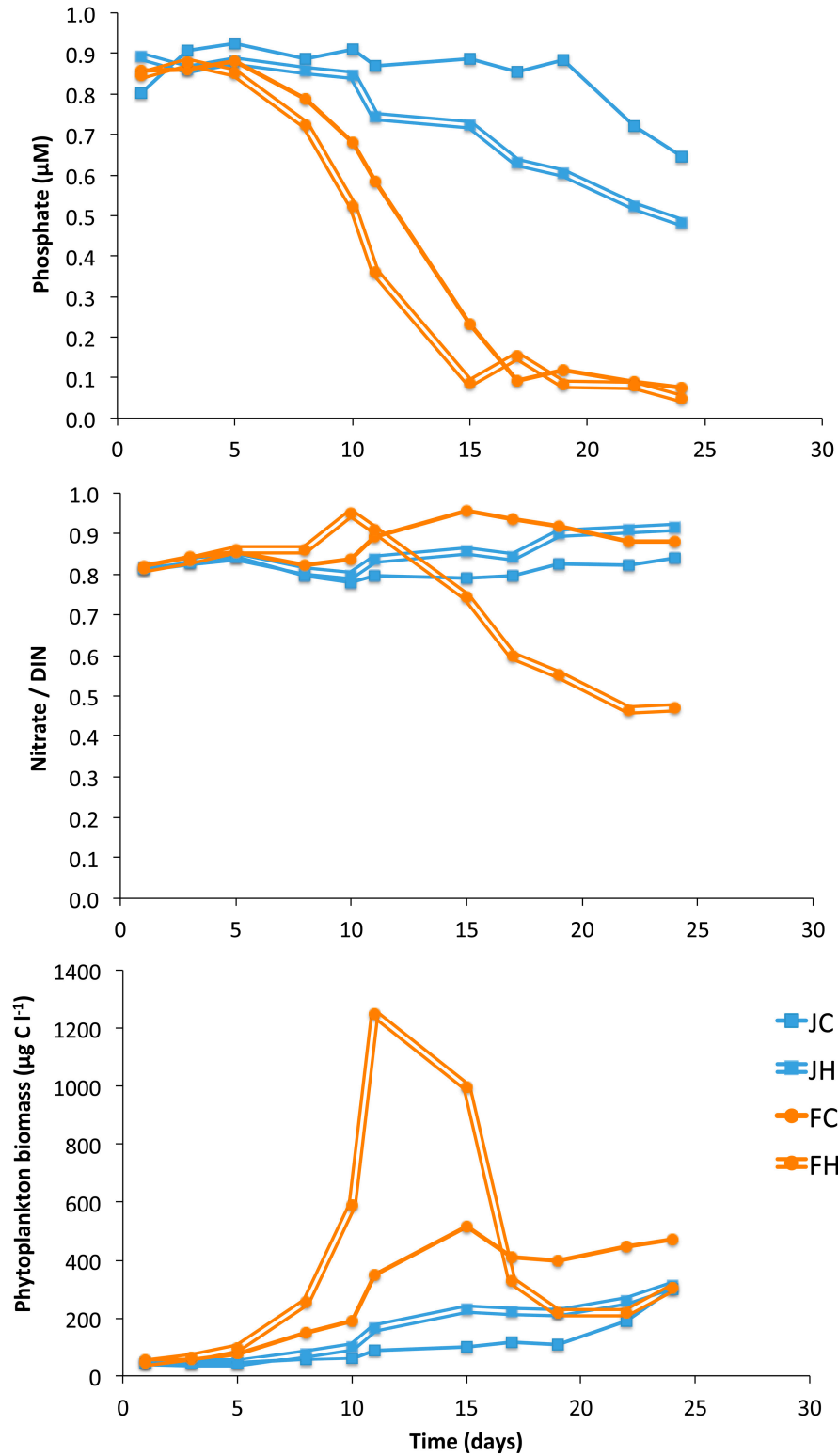


Figure S3. Temporal dynamics of phosphate, nitrate to total dissolved inorganic nitrogen (DIN) ration and phytoplankton biomass in the studied mesocosms (data from Sommer et al. 2012).

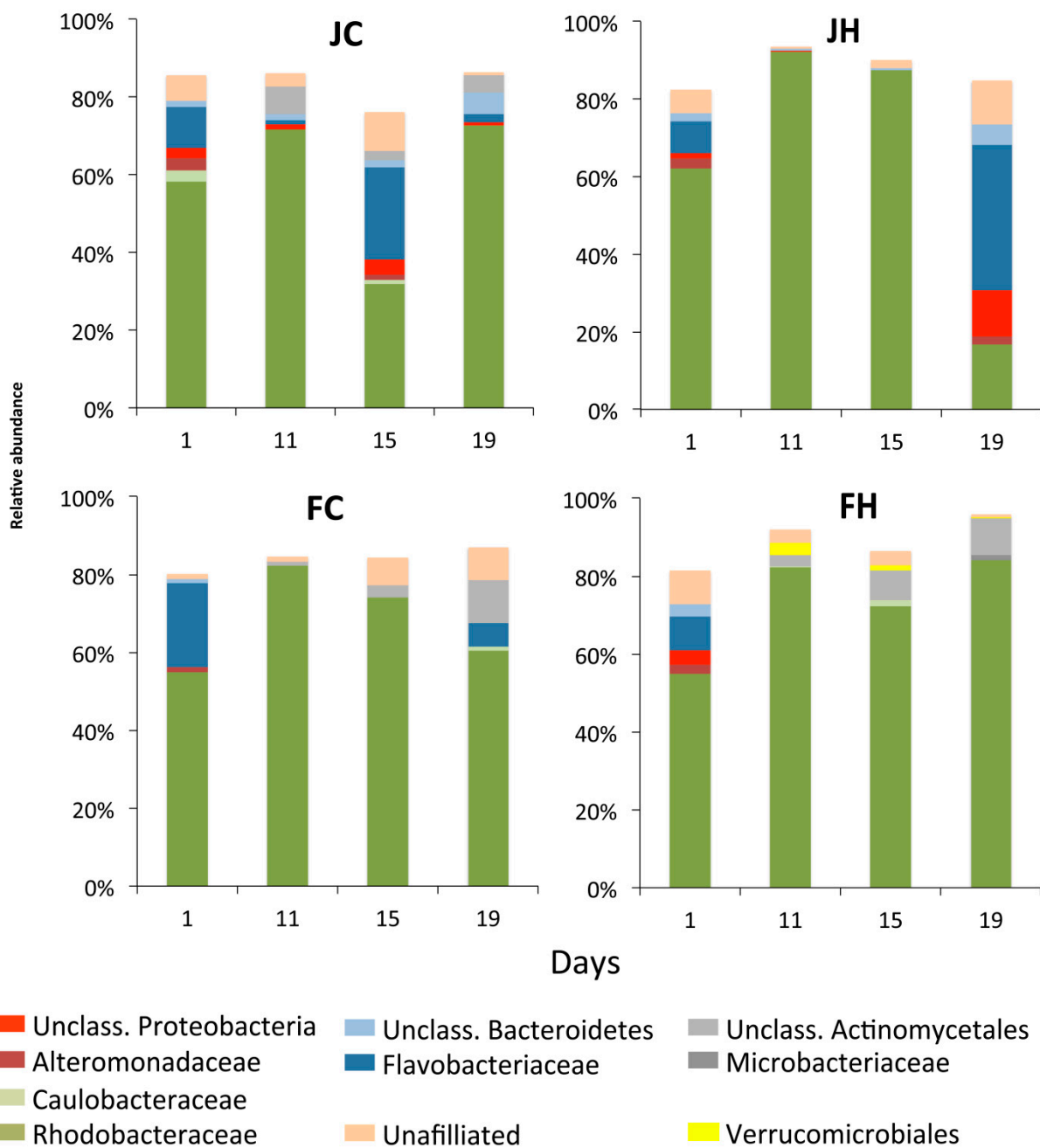


Figure S4. Taxonomic composition of the most abundant (>1%) bacterial OTUs in the studied mesocosms. J: January, F: February, C: control (baseline light intensity), H: high light intensity. Numbers indicate day number of the incubation period.

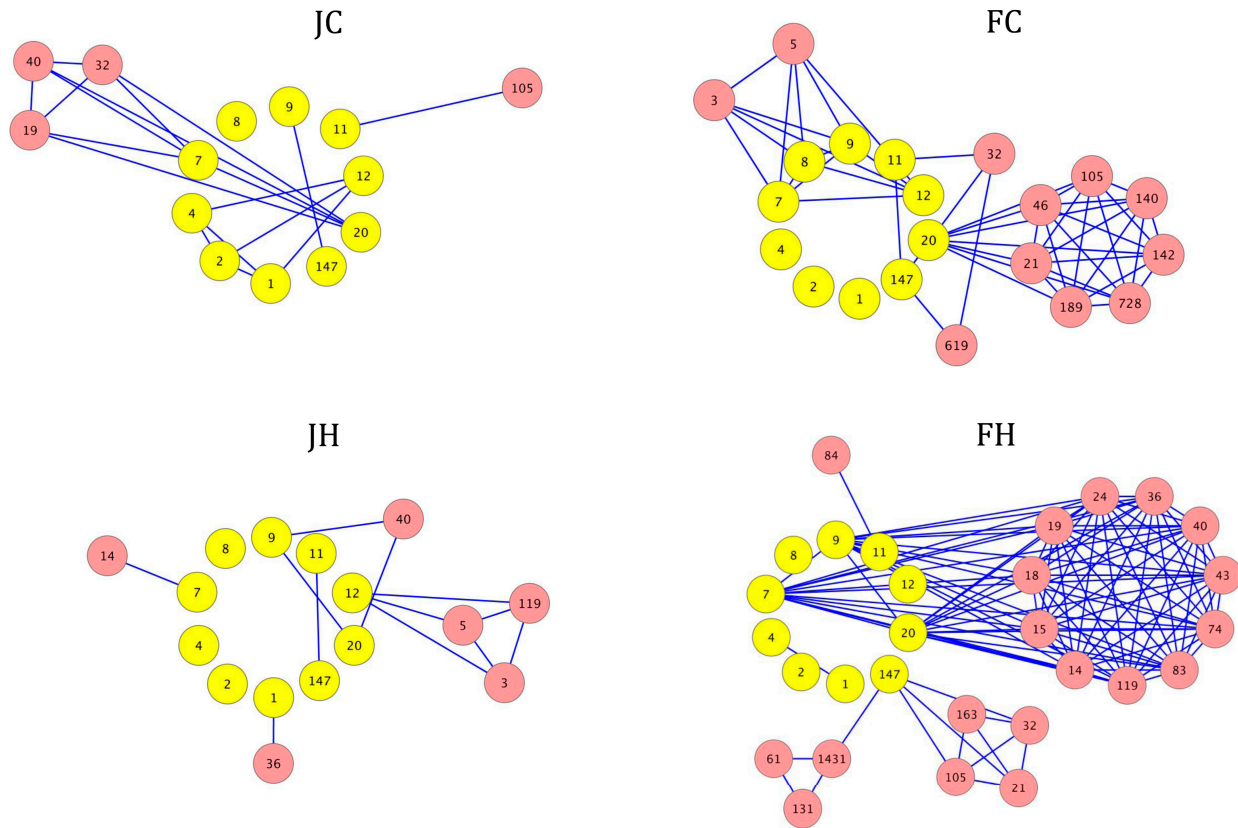


Figure S5. Association network diagram of Spearman's correlations (edges) between the 10 operational taxonomic units (numbers in nodes) shared among the four mesocosms (yellow nodes) that showed statistically significant ($P < 0.02$) correlations of their relative abundances. J: January, F: February, C: control (baseline light intensity), H: high light intensity. Numbers indicate day number of the incubation period.

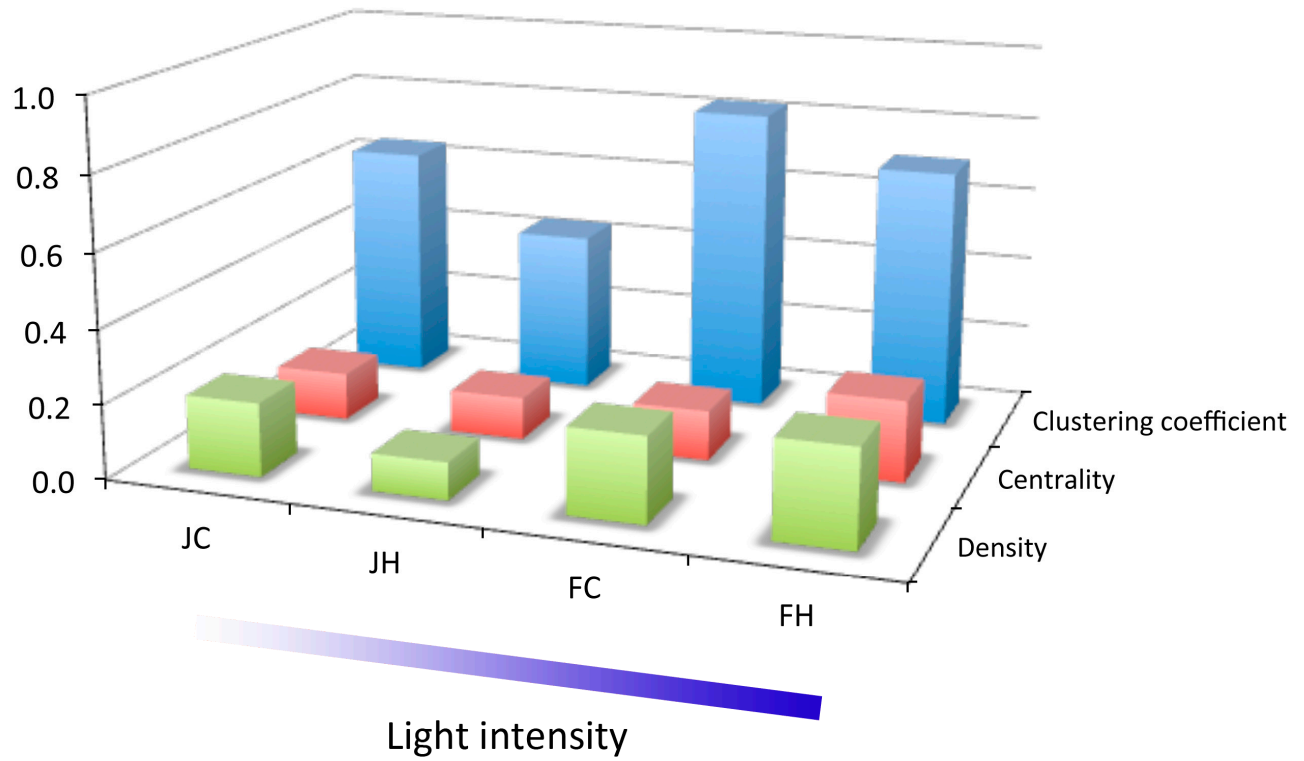


Figure S6. Basic analysis parameters of the networks presented in Fig. S5. J: January, F: February, C: control (baseline light intensity), H: high light intensity. all sampling points (in bold). Bootstrap values were estimated from 1,000 replicates.