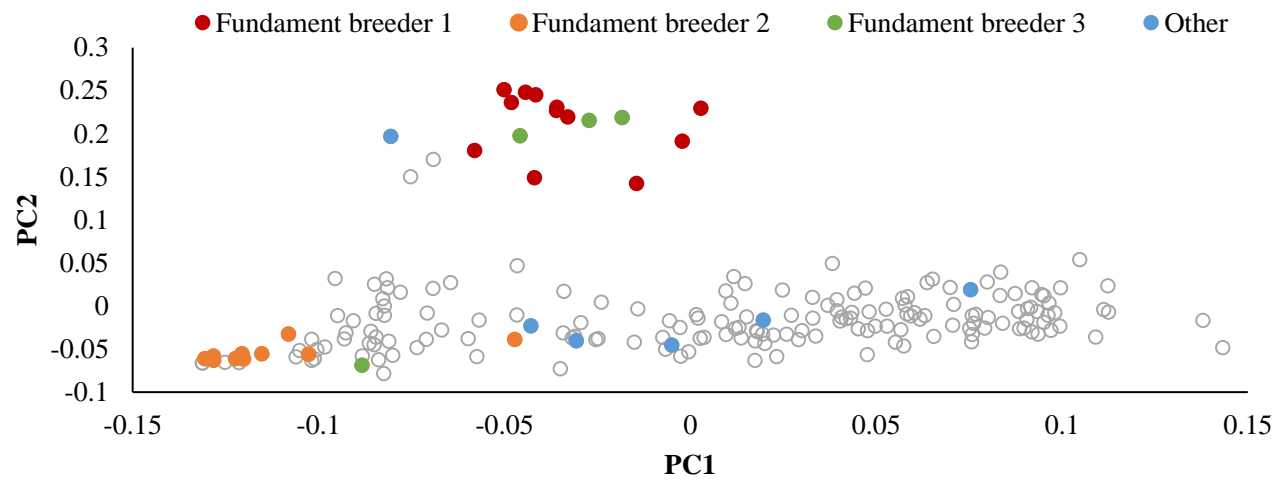


Supplement 3.1. Principal component analysis within Dutch Friesian (DF) bulls showing groups of bulls from fundament breeders. The first two components, PC1 and PC2, accounted for respectively 7.7% and 6.3% of the total variation.



Supplement 3.2. Principal component analysis within MRY bulls. The first two components, PC1 and PC2, accounted for respectively 6.5% and 6.0% of the total variation.

