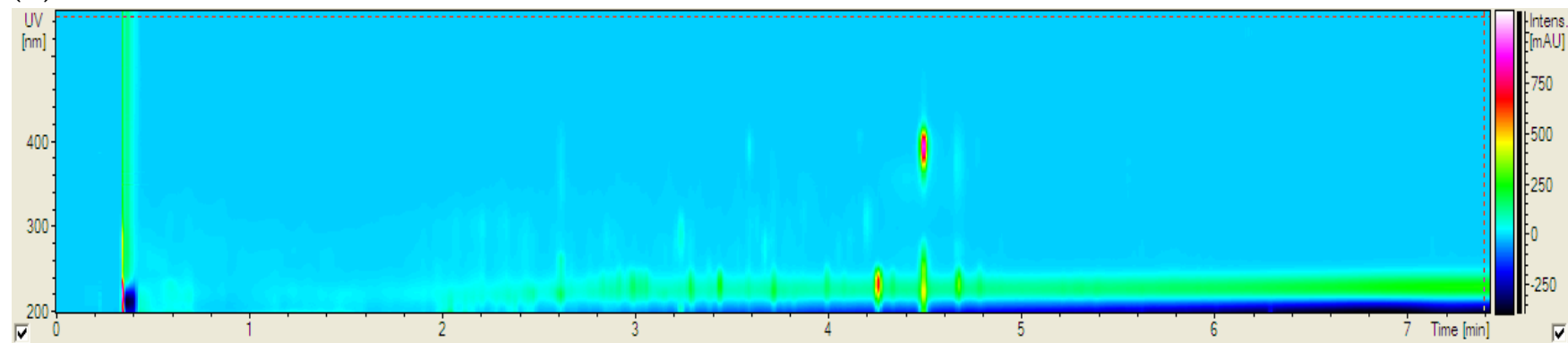
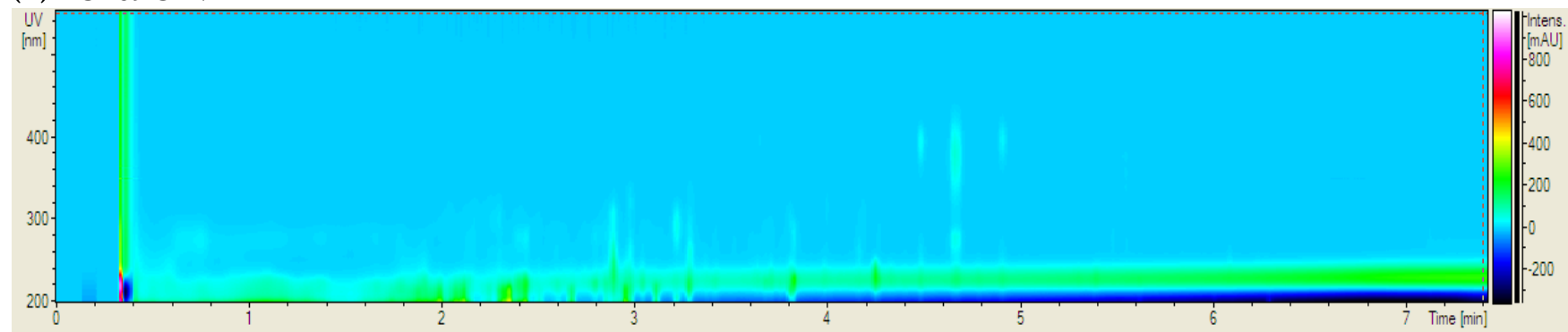


## Supplementary materials

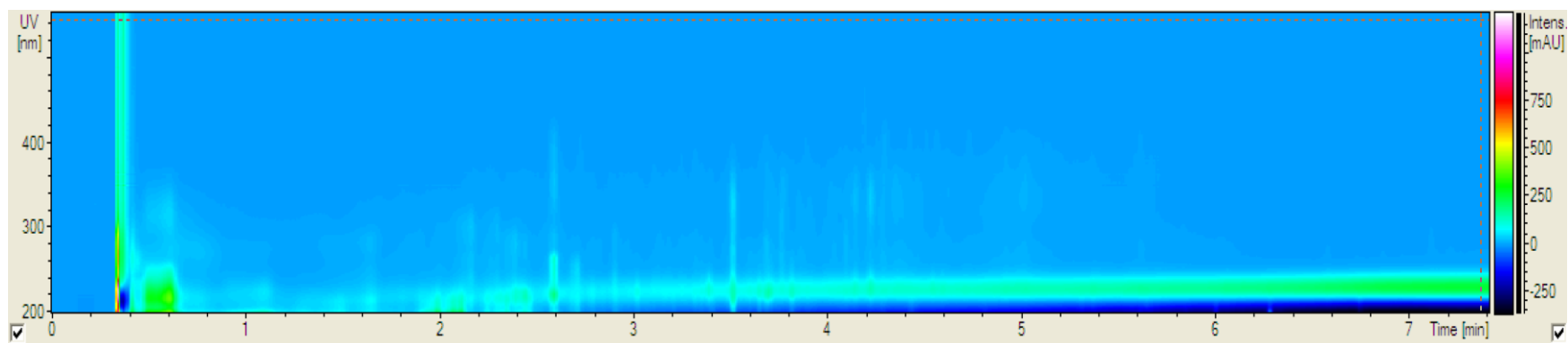
(A) HST09-GYM



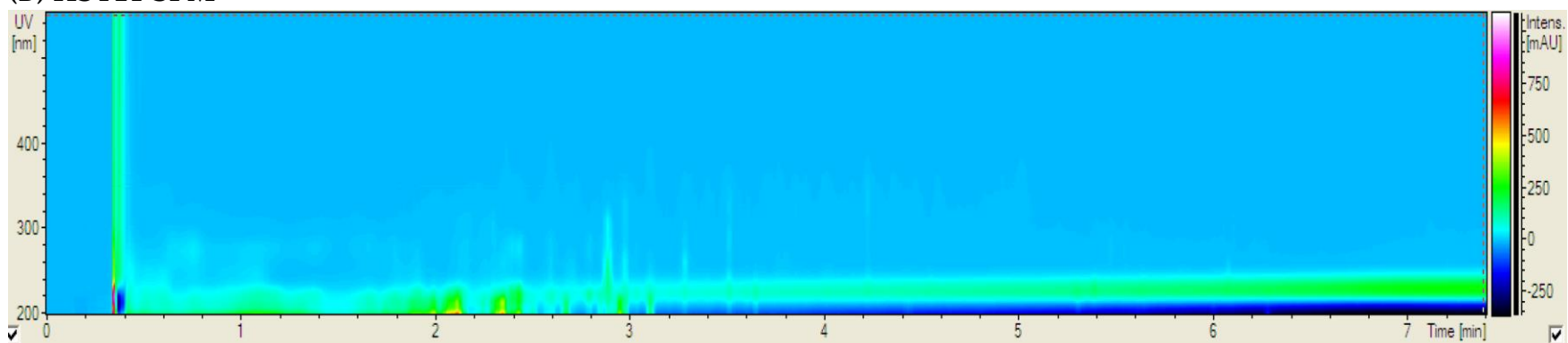
(B) HST09-SPM



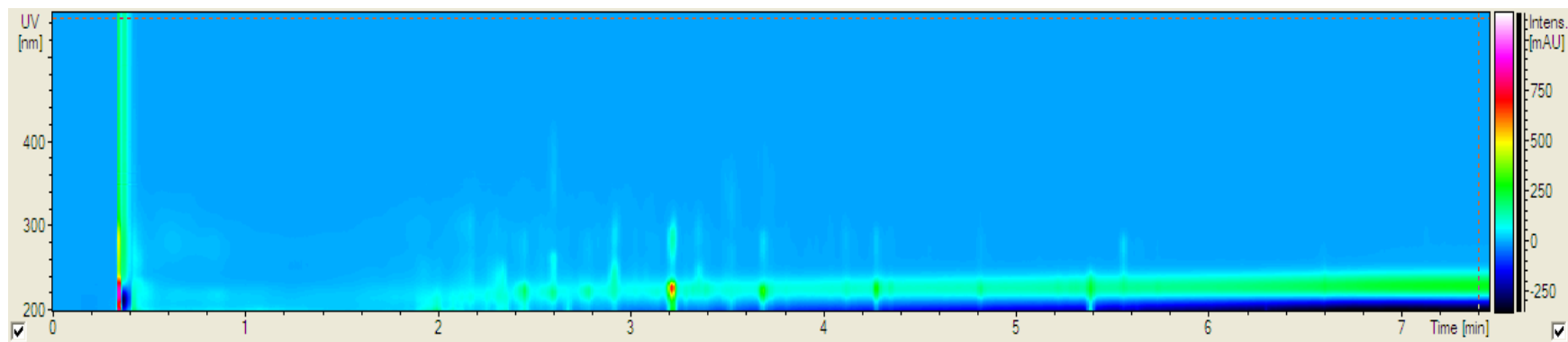
(A) HST14-GYM



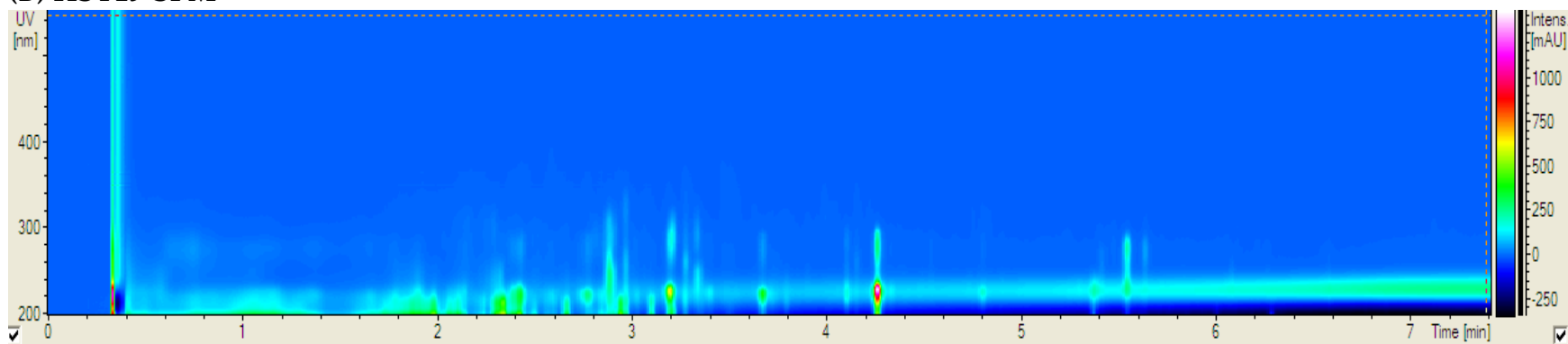
**(B) HST14-SPM**



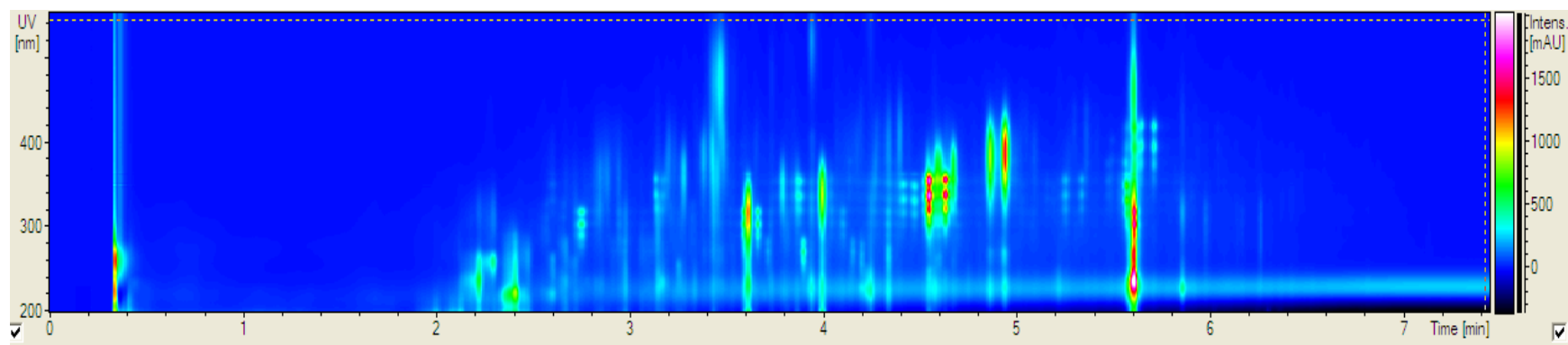
**(A) HST19-GYM**



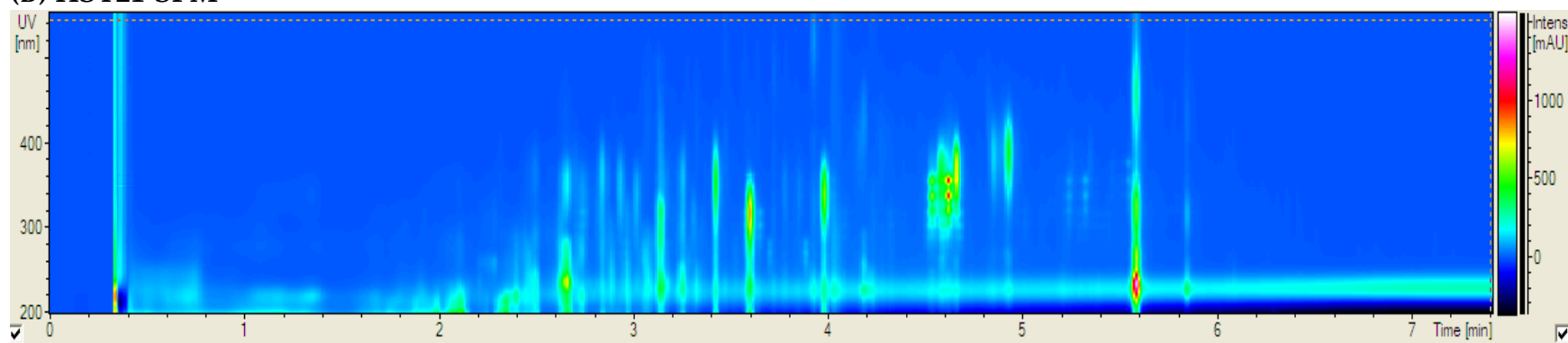
**(B) HST19-SPM**



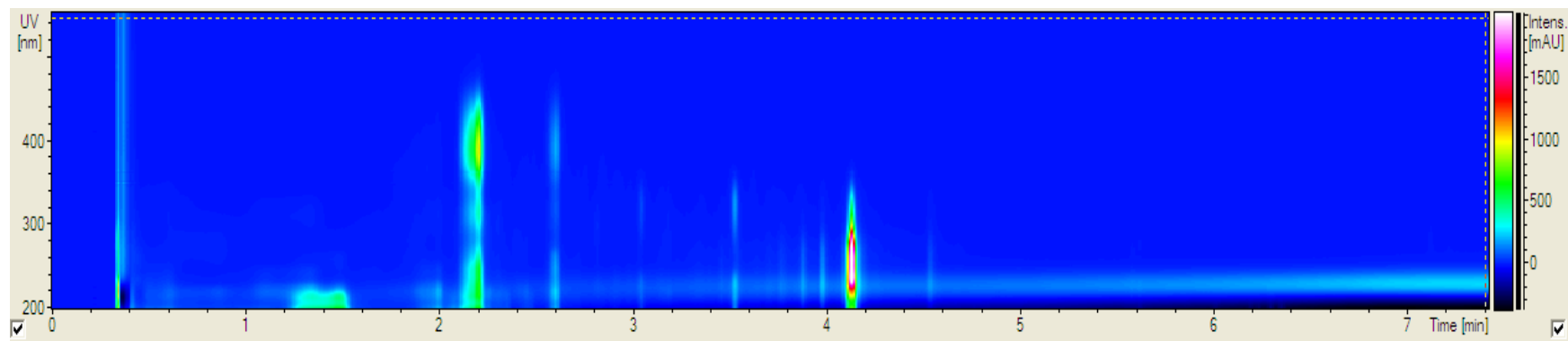
**(A) HST21-GYM**



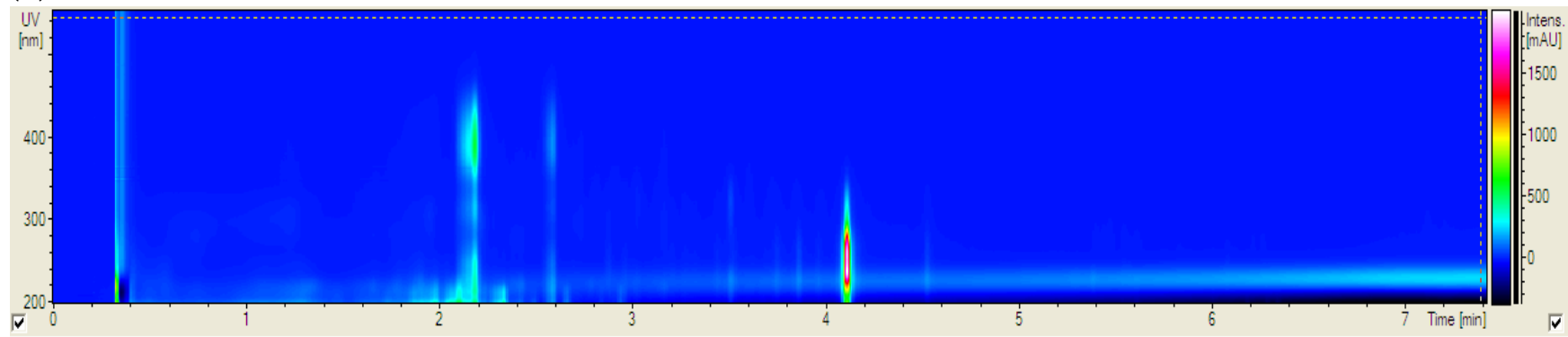
**(B) HST21-SPM**



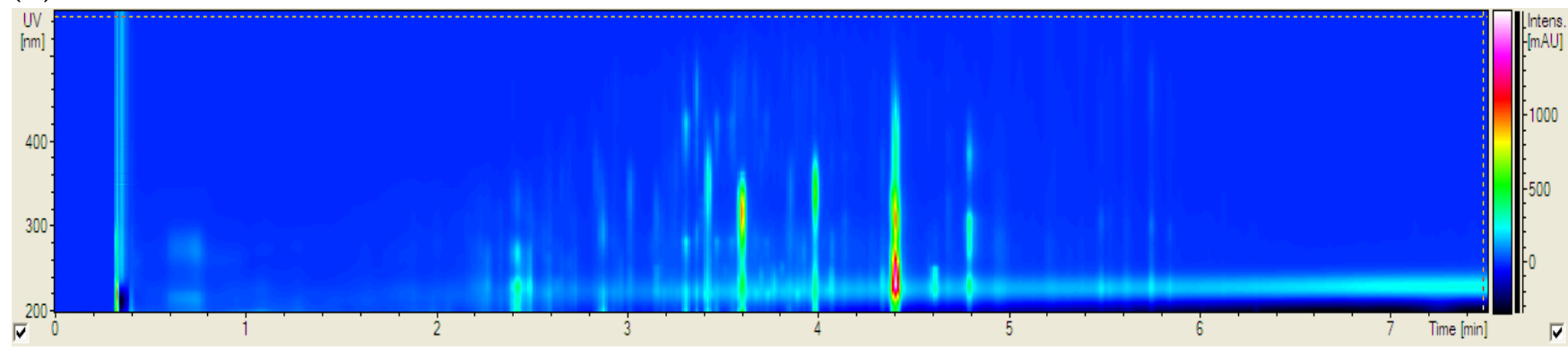
**(A) HST23-GYM**



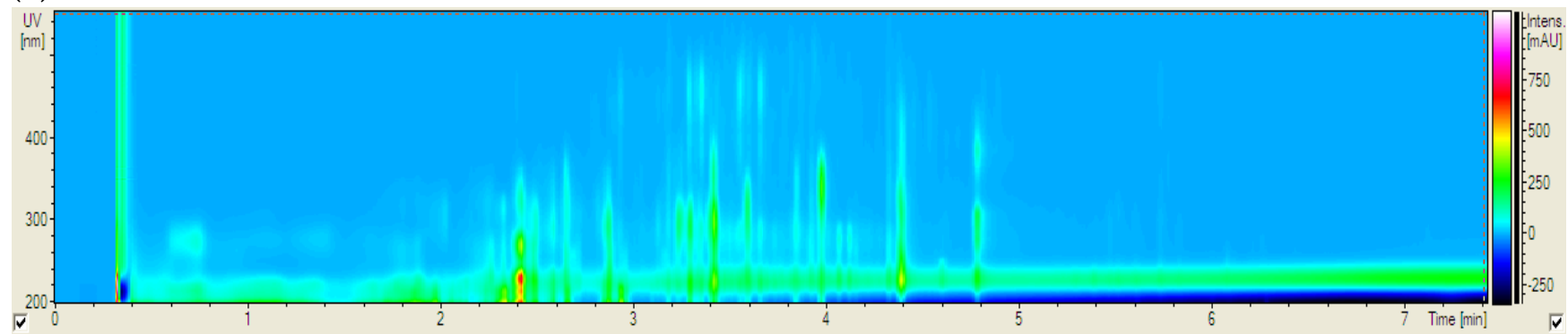
**(B) HST23-SPM**



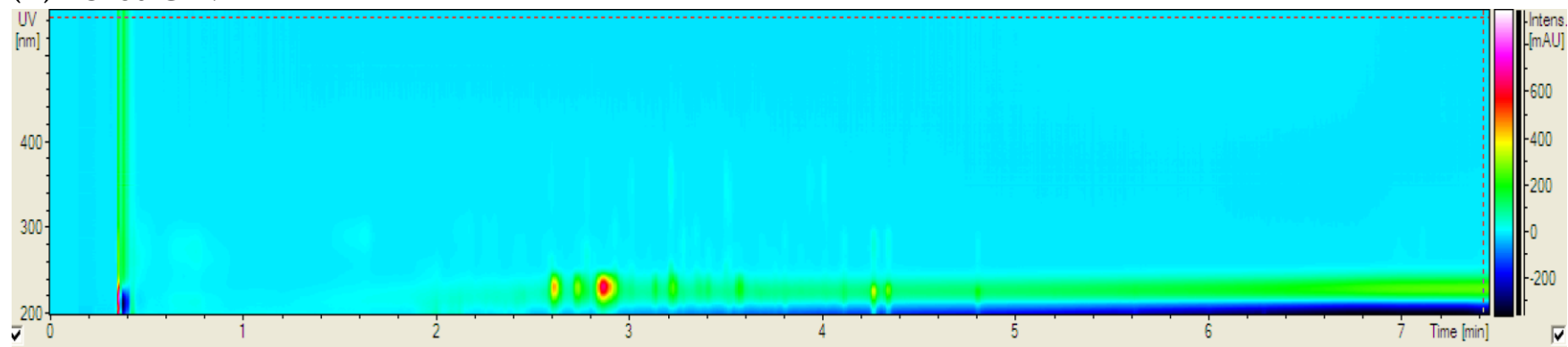
**(A) HST28-GYM**



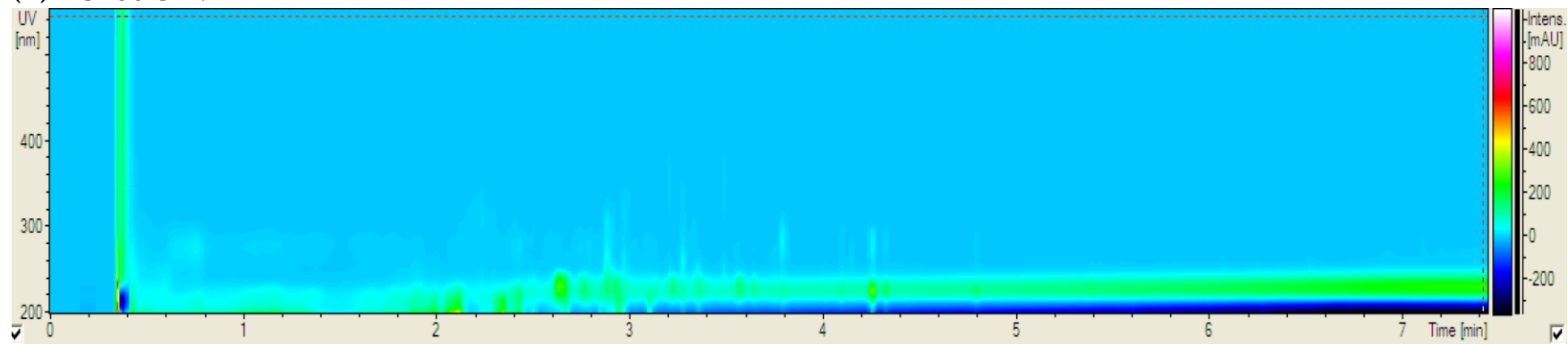
**(B) HST28-SPM**



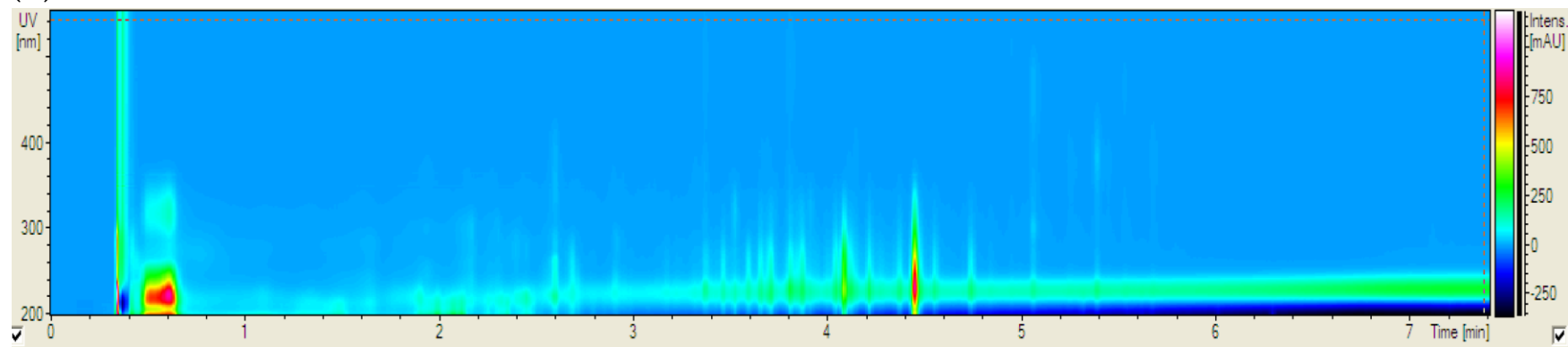
**(A) HST50-GYM**



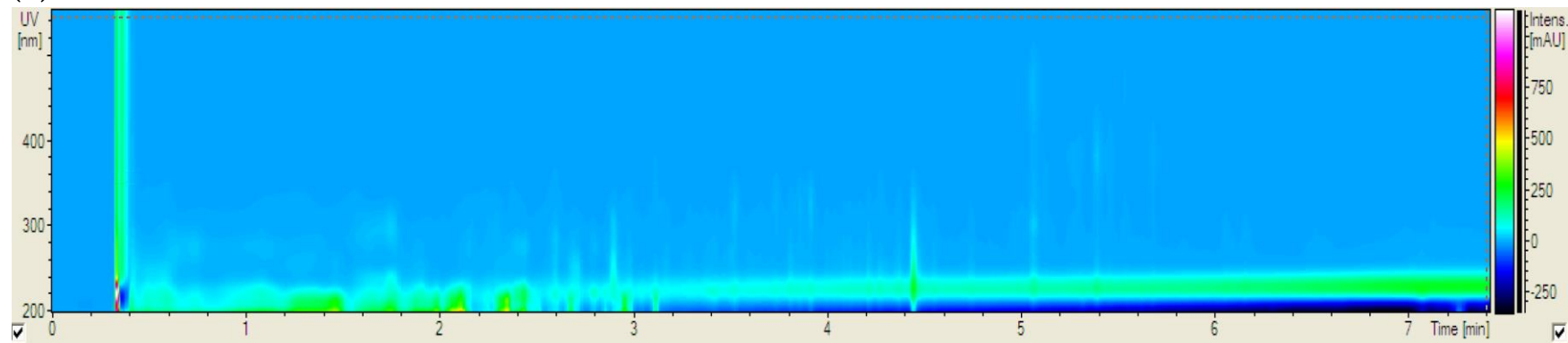
**(B) HST50-SPM**



**(A) HST54-GYM**

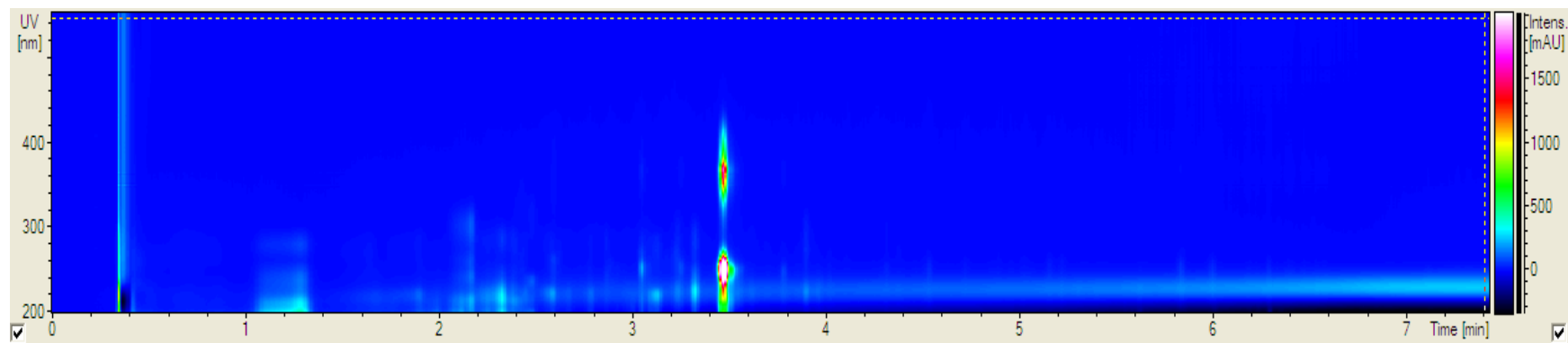


**(B) HST54-SPM**

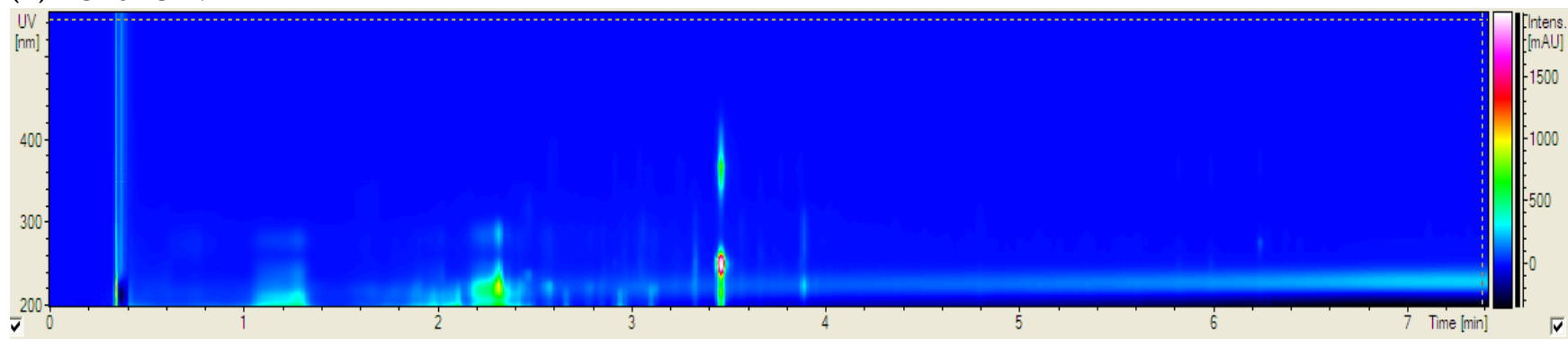


**(A) HST61-GYM**

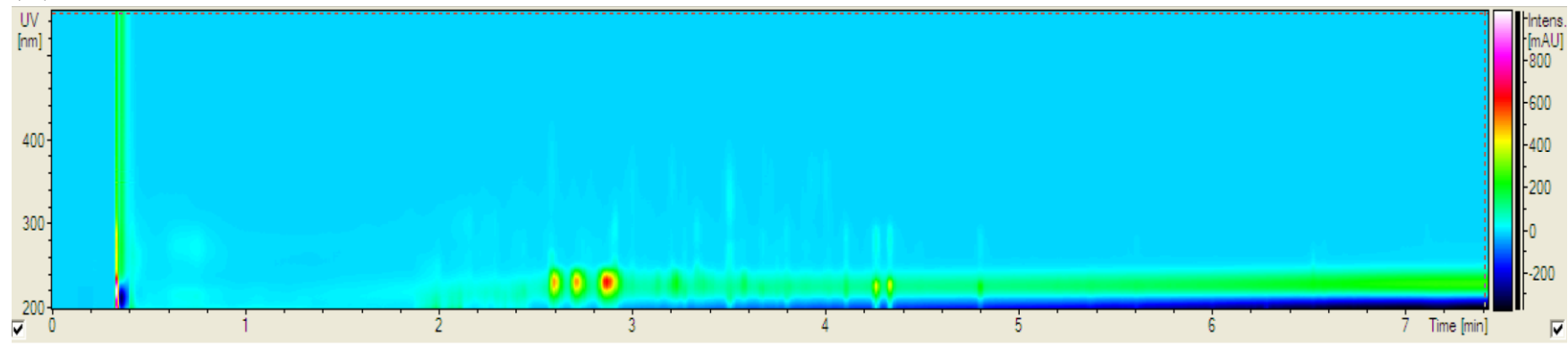




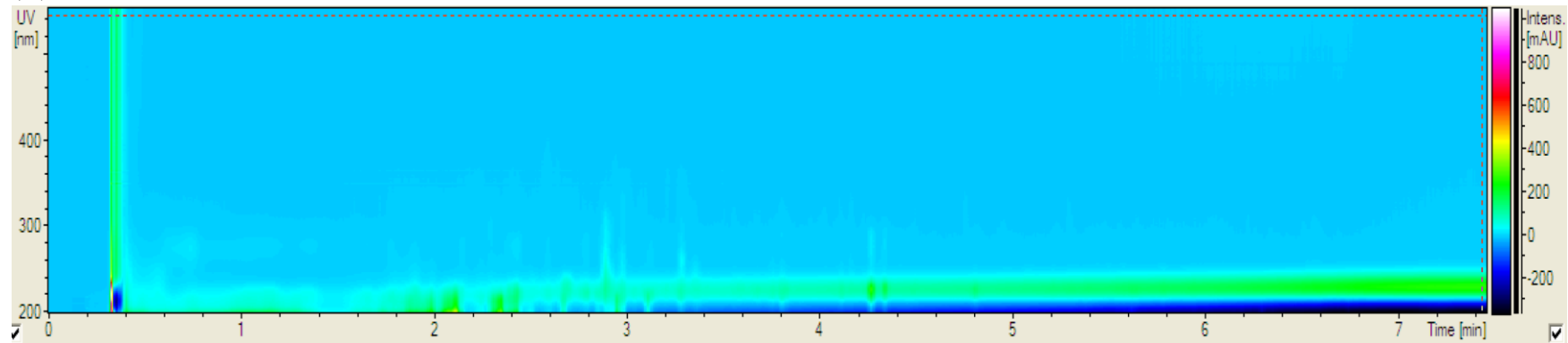
**(B) HST61-SPM**



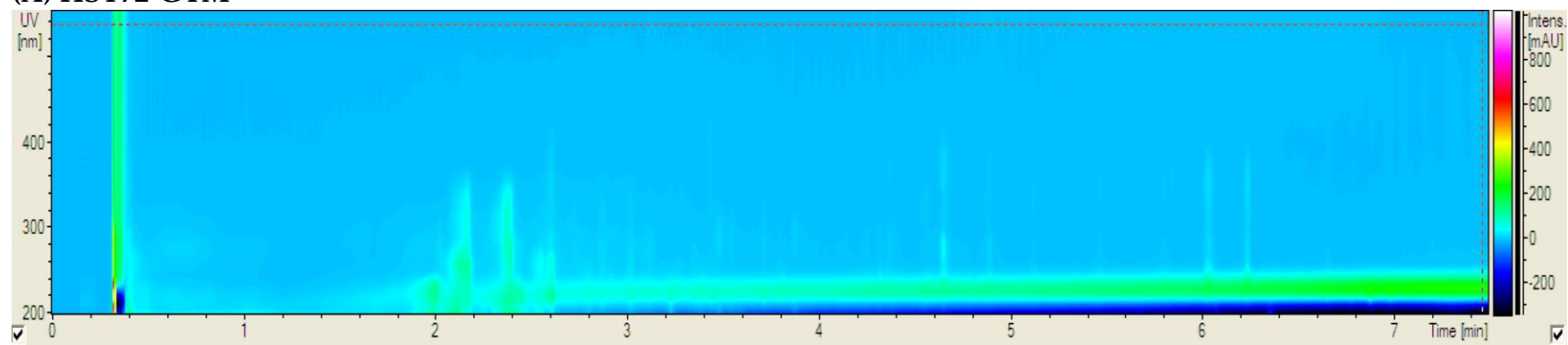
**(A) HST68-GYM**



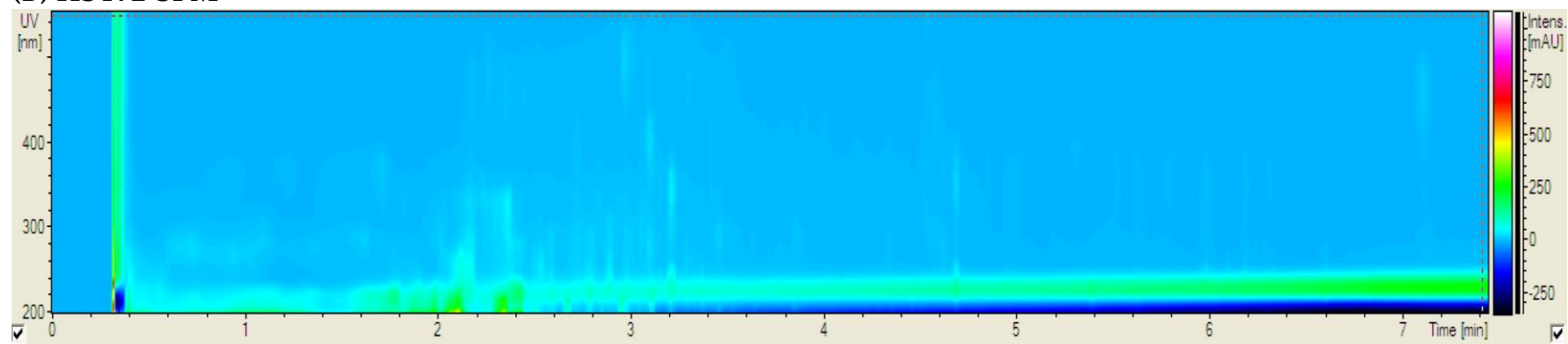
**(B) HST68-SPM**



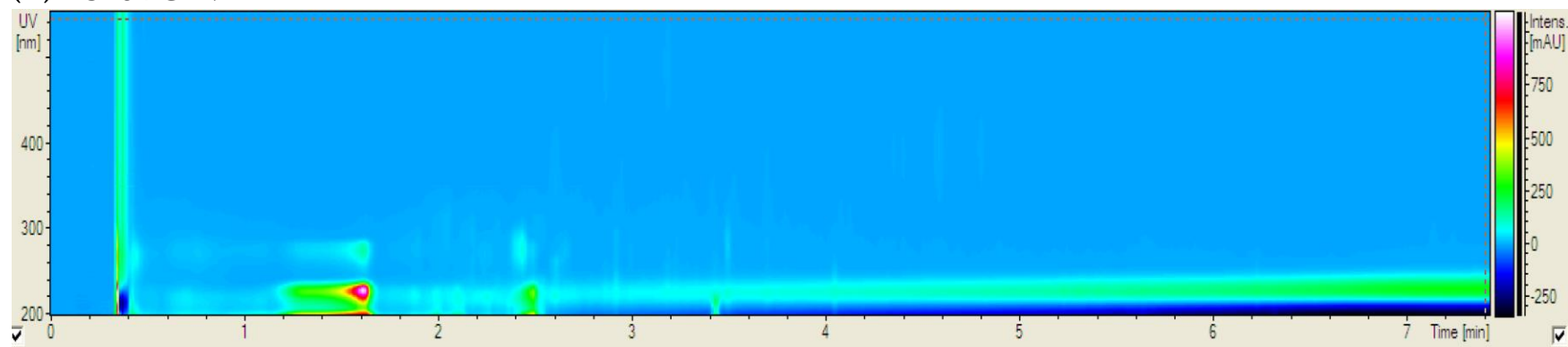
**(A) HST72-GYM**



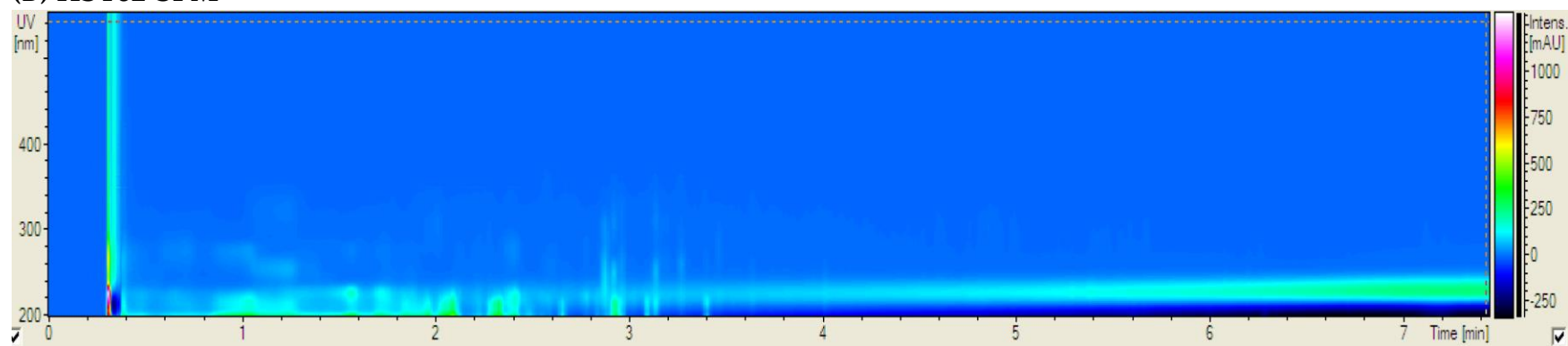
**(B) HST72-SPM**



### (A) HST82-GYM



### (B) HST82-SPM



**Figure S1.** HPLC-UV/Vis Chromatographic profiles of extracts obtained from culture metabolic extracts for analyzed strains, which were grown in liquid media GYM4 (A) and SPM (B) both of them at 2% NaCl. To the left of the graphics it is the absorbance (nm) within UV spectrum, to the right, the intensity of the elution peaks (mAU), and at the bottom, the elution time.