

Supplementary Materials: The following are available online at www.mdpi.com/xxx/s1, Figure S1: Pooled sampling sites of *Emys trinacris*. Consecutive numbers of pooled sites refer to Table S1; Figure S2: Genotypic structuring of 245 Sicilian pond turtles (*Emys trinacris*) from 21 sampling sites for $K=5$ using 16 microsatellite loci. Samples are arranged according to the numbers of the pooled sampling sites (see Table S1). Colours of pooled sampling sites in the map correspond to GENELAND clusters; slices represent turtles with mixed ancestries or conflicting cluster assignment (percentages); Table S1: Origin of the studied *Emys trinacris* samples. Sample sites values refers to number showed in Figure S1.

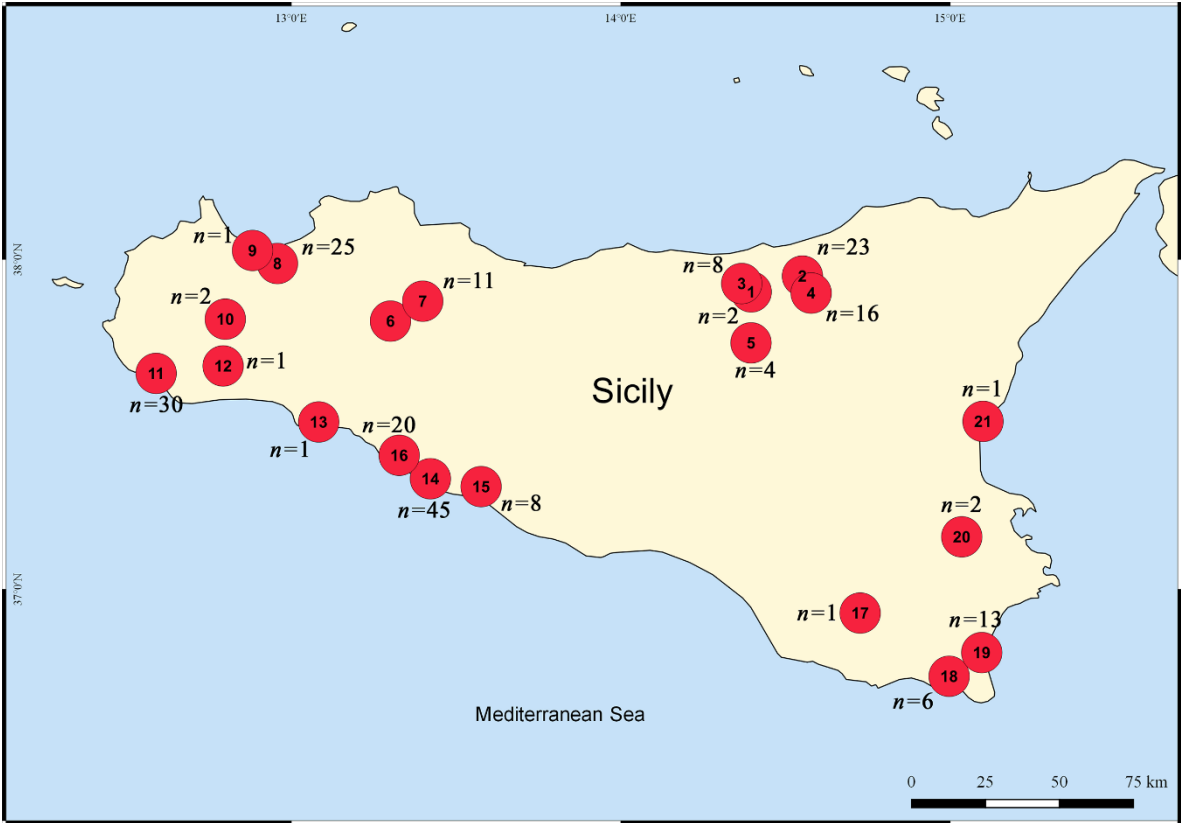


Figure 1. Pooled sampling sites of *Emys trinacris*. Consecutive numbers of pooled sites refer to Table S1.

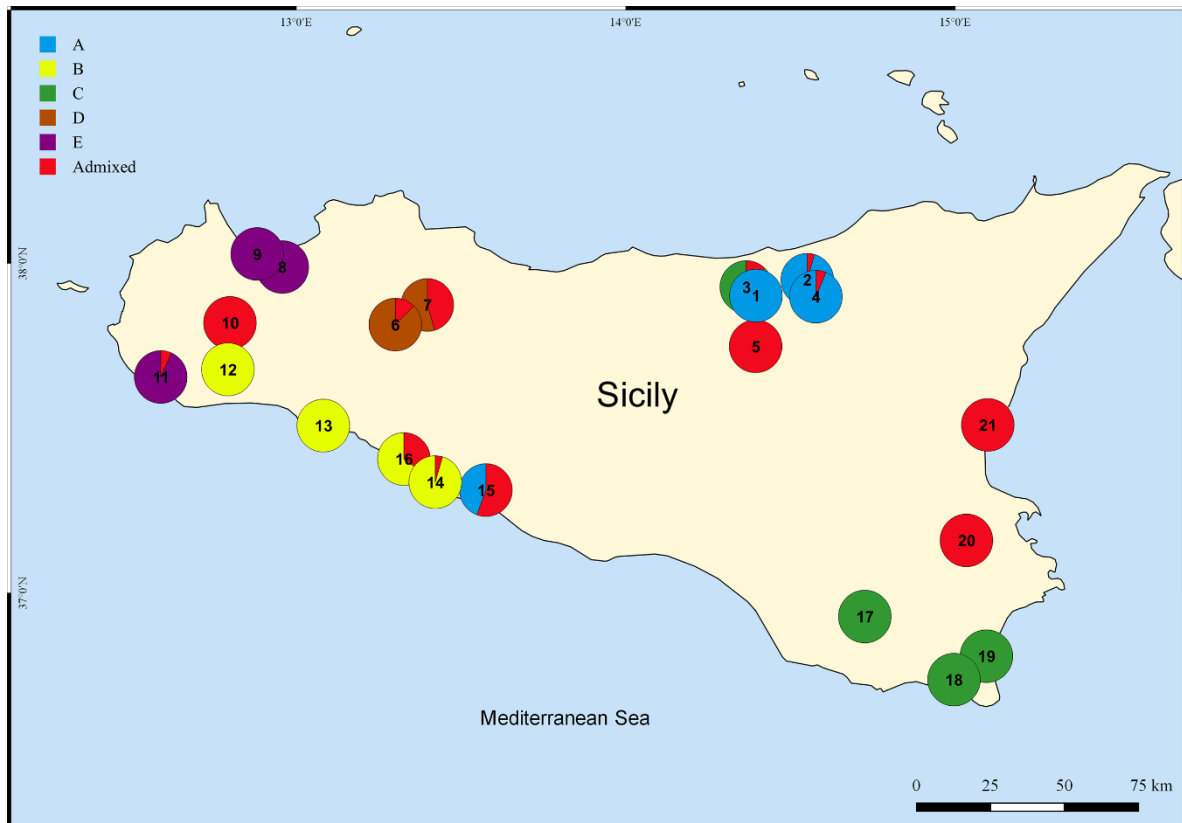


Figure 2. Genotypic structuring of 245 Sicilian pond turtles (*Emys trinacris*) from 21 sampling sites for $K=5$ using 16 microsatellite loci. Samples are arranged according to the numbers of the pooled sampling sites (see Table S1). Colours of pooled sampling sites in the map correspond to GENELAND clusters; slices represent turtles with mixed ancestries or conflicting cluster assignment (percentages).

Table S1. Origin of the studied *Emys trinacris* samples. Sample sites values refers to number showed in Figure S1.

Location	<i>n</i>	Sample sites
Messina: Mistretta: Urio Quattrocchi	2	1
Messina: Caronia: Pantana	23	2
Messina: Mistretta	8	3
Messina: Cesarò	16	4
Enna: Nicosia	4	5
Palermo: Corleone	24	6
Palermo: Godrano: Laghetti Coda di Riccio	11	7
Palermo: Monreale: Lago Gallitello	25	8
Trapani: Castellamare del Golfo	1	9
Trapani: Salemi	2	10
Trapani: Mazara del Vallo: RNI "Lago Preola e Gorgi Tondi"	30	11
Trapani: Castelvetro	1	12
Agrigento: Ribera	1	13
Agrigento: Siculiana. RNO "Torre Salsa"	45	14
Agrigento	1	15
Agrigento: Montallegro: Diga Gorgo	20	16
Ragusa	1	17
Ragusa: Ispica: Canale Longarini	6	18
Siracusa: Vendicari	13	19
Siracusa: Fiume San Leonardo	2	20
Catania: Fiume Simeto	1	21