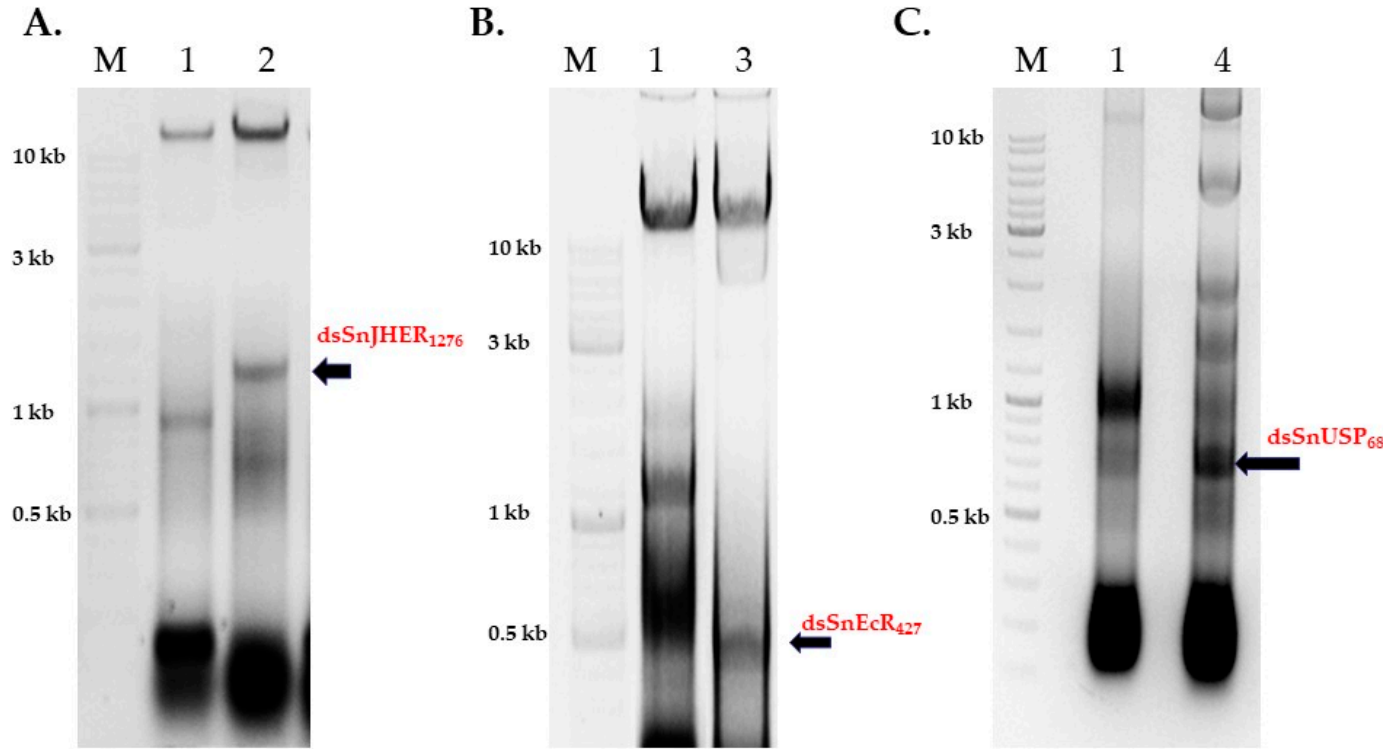


Supplementary materials

Table S1: PCR primers used in this study.

PRIMER NAME	SEQUENCE 5'→3'
<i>SnEcRDegF</i>	TTGTAAAGGNGTRTTCAGGCSGAG
<i>SnEcRDegR</i>	CGGCAGTTNCCRGTTSBTCAGCTTC
<i>SnUSPDegF</i>	ATGTCGCCATGTCNCCDCCBGARATG
<i>SnUSPDegR</i>	GAGTTNCGGTGCAGGNTCATGC
<i>T7RNAPolProm</i>	TAATACGACTCACTATAGGG
<i>TubF</i>	GAGCAGTTCACCGCTATGTTCC
<i>TubR:</i>	GGTGTGAGTGCTTTAGTTGTCC
<i>SnEcRRTF</i>	AGAGGGAAAAAGACAAGTTACCAG
<i>SnEcRF</i>	AGATTACATTATTAAAGGCGTGCTC
<i>SnEcRR</i>	GAGATGCACATGTTGGAGTTCTGC
<i>SnUSPConF</i>	CTAAGTGGTTCCAAGCATCTCTG
<i>SnUSPConR</i>	GAGTTACGGTGCAGGGTCATGC
<i>OligodT</i>	GTCGACCTCGAG(T17)
<i>SnEcRF:</i>	AGATTACATTATTAAAGGCGTGCTC
<i>SnEcRR</i>	GAGATGCACATGTTGGAGTTCTGC



M: Marker

1: L4440 +IPTG

2: L4440-SnJHER₁₂₇₆ +IPTG

3: L4440- SnEcR₄₂₇ +IPTG

4: L4440- SnUSP₆₈₉ +IPTG

Figure S1. Production of SnJHER₁₂₇₆, SnEcR₄₂₇ and SnUSP₆₈₉ dsRNAs in HT115 cells. **A.** Total RNA isolated from L4440 or L4440-SnJHER₁₂₇₆-transformed and IPTG induced HT115 bacteria, **B.** Total RNA isolated from L4440 or L4440- SnEcR₄₂₇-transformed and IPTG induced HT115 bacteria and **C.** Total RNA isolated from L4440 or L4440- SnUSP₆₈₉-transformed and IPTG induced HT115 bacteria, analyzed in 1% w/v agarose gels. **M:** Molecular marker. Unspecific dsRNA products of the empty L4440 plasmid can be observed in ~1 kb.