

**Table S1.** Basic information on studied reservoirs.

Name	Forest division	Forestry	Approximate area (m <sup>2</sup> )
WEB1	227	Czarny Bród	500
WEB2	78	Żyliny	500
WEB3	132	Żyliny	500
WEB4	189	Sajenek	500
WEB5	168	Czarny Bród	150
SEM1	75/76	Żyliny	35
SEM2	2	Żyliny	30
SEM3	249/250	Czarny Bród	20
SEM4	256	Sajenek	10
TRA1	75/76	Żyliny	450
TRA2	2	Żyliny	450
TRA3	249/250	Czarny Bród	450
TRA4	256	Sajenek	450
NAT1	112	Brzozowe Grądy	<1000
NAT2	139	Brzozowe Grądy	25
NAT3	161	Żyliny	30
NAT4	189	Sajenek	10
NAT5	158	Czarny Bród	100
NAT6	176	Kozi Rynek	30

Table S2. List of Odonata taxa recorded.

Taxa	Locality														
	Reservoirs transformed in 2018				Waterholes created in 2013-2015					Natural reservoirs					
	TRA1	TRA2	TRA3	TRA4	WEB1	WE B2	WE B3	WE B4	WEB5	NA T1	NA T2	NA T3	NA T4	NA T5	NAT6
<i>Calopteryx splendens</i> (Harris, 1780)		○		○											
<i>Calopteryx virgo</i> (Linnaeus, 1758)		○													
<i>Lestes sponsa</i> (Hansemann, 1823)	○		○			○	■		○						
<i>Lestes dryas</i> Kirby, 1890	○	○		●	○		○		●					○	
<i>Lestes barbarus</i> (Fabricius, 1798)									○						
<i>Lestes virens</i> (Charpentier, 1825)	○	○	○	○		■	○								
<i>Ischnura elegans</i> (Vander Linden, 1820)					●				●				○		
<i>Ischnura pumilio</i> (Charpentier, 1825)						○	○								
<i>Enallagma cyathigerum</i> (Charpentier, 1840)	○						○		○						
<i>Coenagrion puella</i> (Linnaeus, 1758)	●	●	●	●	●	●	●	●	●	●		■	○	●	●
<i>Coenagrion hastulatum</i> (Charpentier, 1825)		●						○						○	
<i>Coenagrion lunulatum</i> (Charpentier, 1840)		●*													
<i>Pyrrhosoma nymphula</i> (Sulzer, 1776)			■		○									●	
<i>Aeshna isoeles</i> (Müller, 1767)				○											
<i>Aeshna grandis</i> (Linnaeus, 1758)														●	
<i>Aeshna cyanea</i> (Müller, 1764)	■	○	■	●					■	●		■		●	■
Aeshnidae					○										
<i>Gomphus vulgatissimus</i> (Linnaeus, 1758)		○												○	
<i>Cordulia aenea</i> (Linnaeus, 1758)			○		○										
<i>Somatochlora metallica</i> (Vander Linden, 1825)									○						
Corduliidae						○									
<i>Libellula quadrimaculata</i> Linnaeus, 1758	●	○	■	●		●	■	●	○					○	
<i>Libellula depressa</i> Linnaeus, 1758	●	■	●	●			○		○						
<i>Leucorrhinia pectoralis</i> (Charpentier, 1825)	■	○	●	●	○	■								■	○
<i>Sympetrum danae</i> (Sulzer, 1776)	○	○													
<i>Sympetrum sanguineum</i> (Müller, 1764)	■		○			■	○		■						

\* 1 *exuviae* was found. Reliably distinguishing the *exuviae* of *Coenagrion lunulatum* from the *exuviae* of the *C. hastulatum* and *C. armatum* is difficult. The record should be regarded as uncertain. ● autochthonous; ■ probably autochthonous; ○ recorded.

Table S3. List of Amphibians taxa recorded in 2018 and in 2020.

Taxa	Locality																														
	Ponds built in 2013-2015												Ponds built in 2018								Natural ponds										
	WEB1		WEB2		WEB3		WEB4		WEB5		SEM/ TRA1		SEM/ TRA2		SEM/ TRA3		SEM/ TRA4		NAT1		NAT2		NAT3		NAT4		NAT5		NAT6		
	2018	2020	2018	2020	2018	2020	2018	2020	2018	2020	2018	2020	2018	2020	2018	2020	2018	2020	2018	2020	2018	2020	2018	2020	2018	2020	2018	2020	2018	2020	
<i>Bufo bufo</i> (Linnaeus, 1758)			●■		●■					●■									●■												
<i>Hyla arborea</i> (Linnaeus, 1758)																			○												
<i>Lissotriton vulgaris</i> (Linnaeus, 1758)	●■		●■				●		●		●■			●■	●■	●■	●								●■	●■					
<i>Pelophylax esculentus</i> (Linnaeus, 1758) *																															
<i>Pelophylax lessonae</i> (Camerano, 1882) *	●■	●■	●■	●■	●■	●■	●■	●■		●■	●■	●	●	●	●	●	●	●■	●	●■		●		●	●	●					
<i>Pelophylax ridibundus</i> (Pallas, 1771) *																															
<i>Pseudepidalea viridis</i> (Laurenti, 1768)							●■	●■																							
<i>Rana arvalis</i> (Nilsson, 1842)	●■		●■		●■				●■						●			●■									●■				
<i>Rana temporaria</i> (Linnaeus, 1758)																															
<i>Triturus cristatus</i> (Laurenti, 1768)	●■		●■	●■	●■	●						●	●■	●	●		●■		●■						●■	●					

\* Due to the difficulty of determining the taxonomic affiliation of green frogs in the field, each individual encountered was described as belonging to the group of "green frogs" (*Pelophylax esculentus* complex). ● adult; ■ eggs/larvae/tadpole; ○ only call recorded.

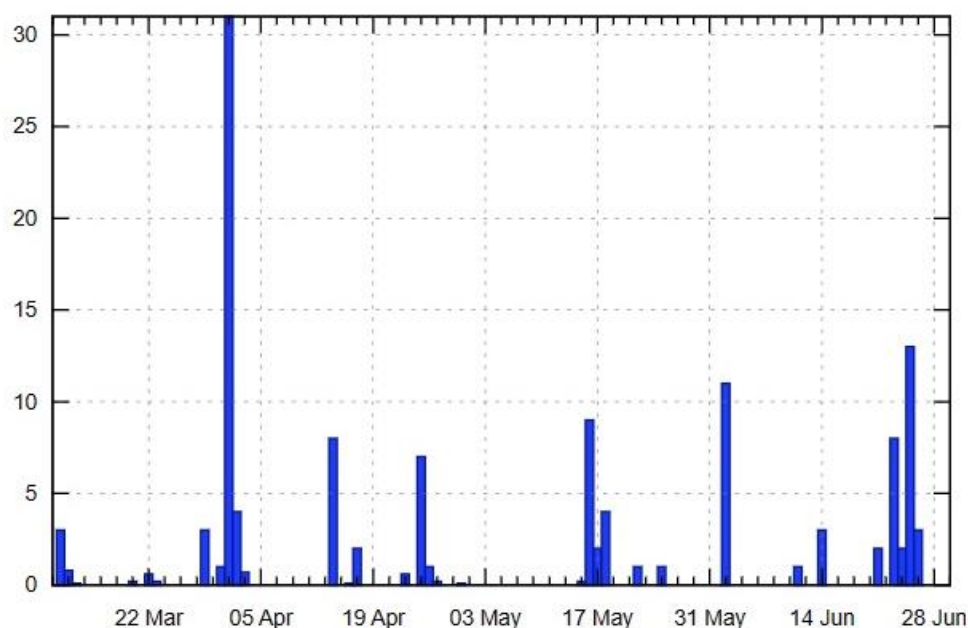
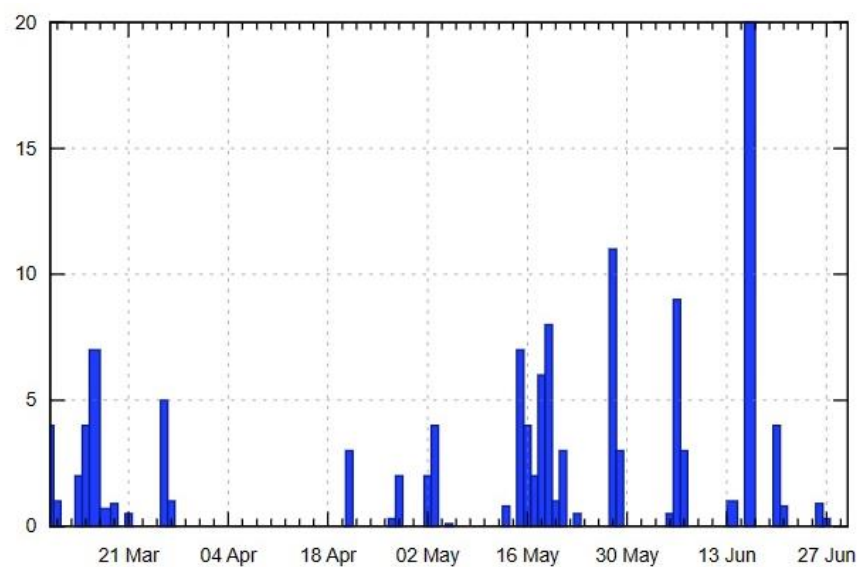
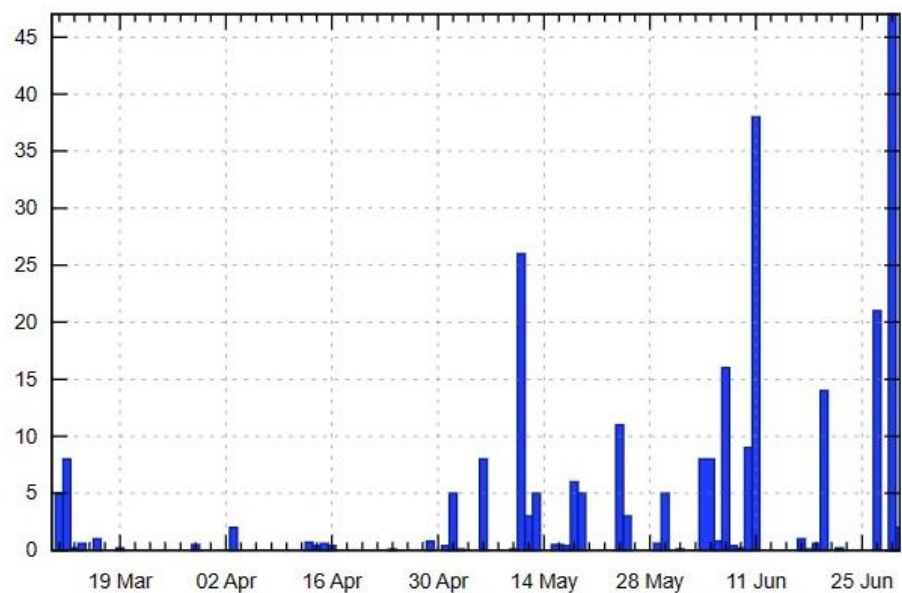


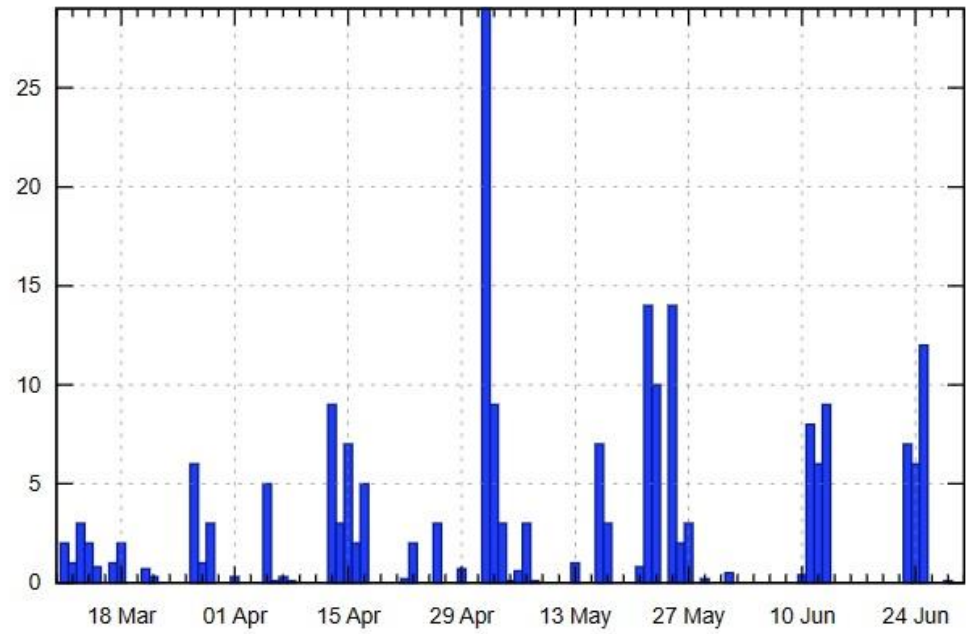
Figure S1. The chart of precipitation in Suwalki, 10.03.2018-30.06.2018 [74].



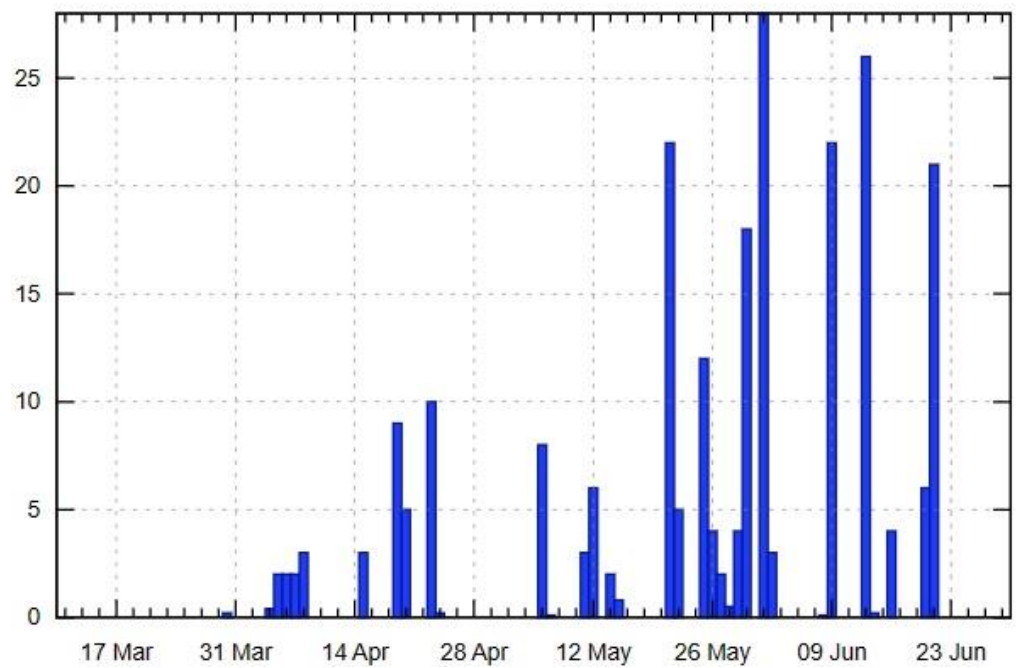
**Figure S2.** The chart of precipitation in Suwalki, 10.03.2019-30.06.2019 [74].



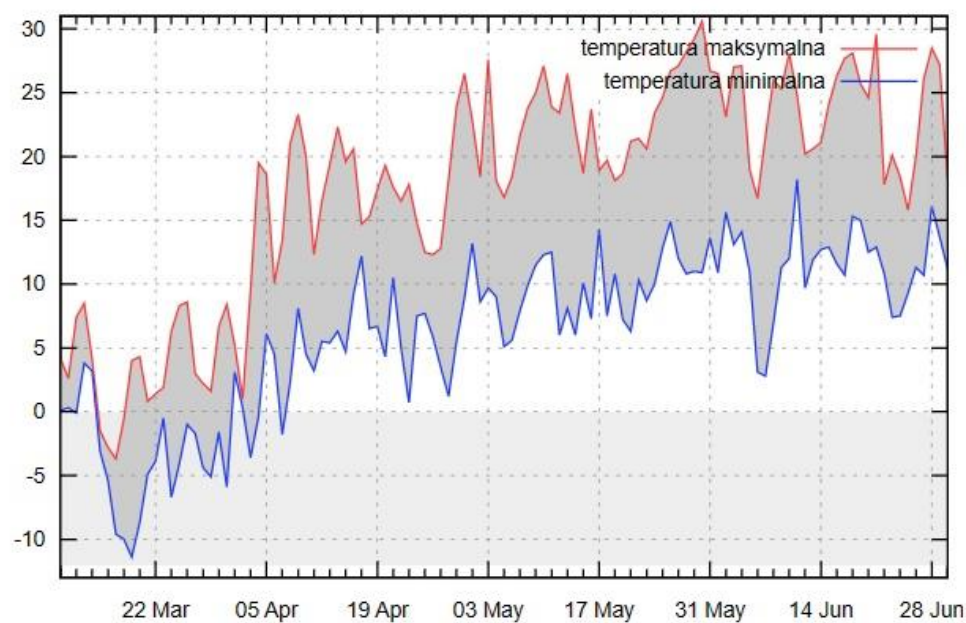
**Figure S3.** The chart of precipitation in Suwalki, 10.03.2020-30.06.2020 [74]



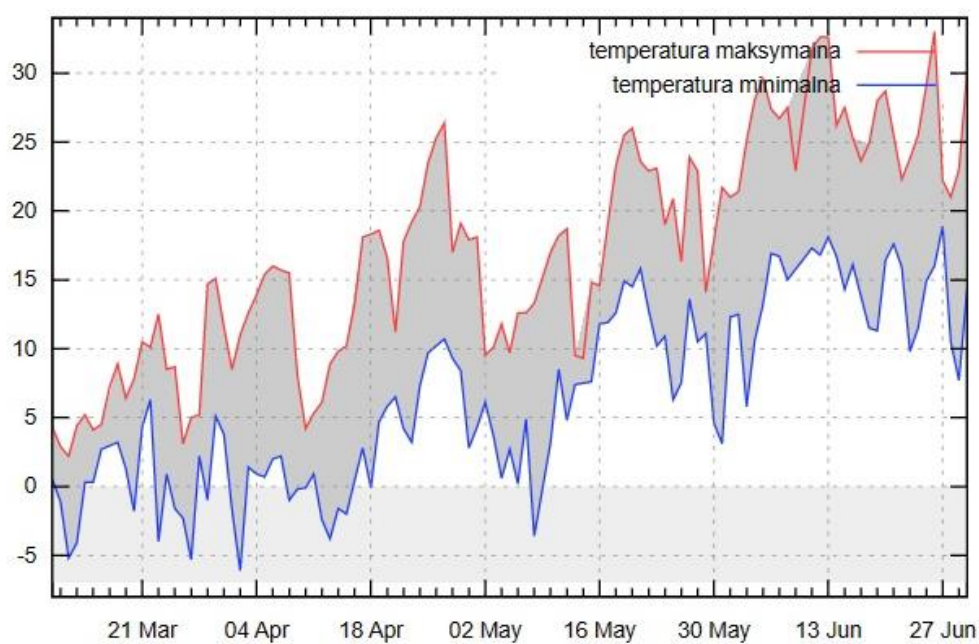
**Figure S4.** The chart of precipitation in Suwalki, 10.03.2020-30.06.2021 [74].



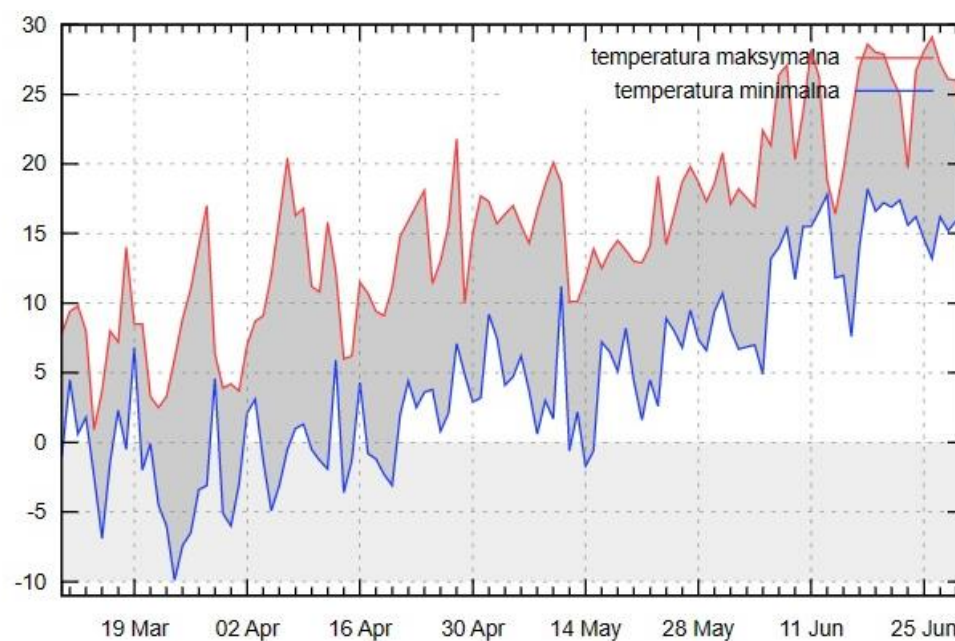
**Figure S5.** The chart of precipitation in Suwalki, 10.03.2022-30.06.2022 [74].



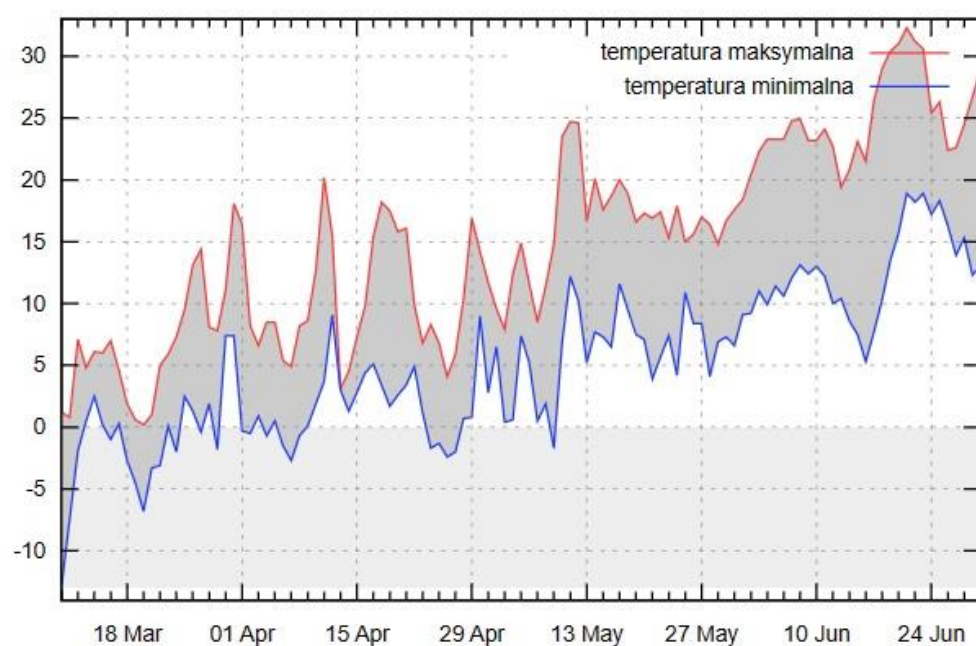
**Figure S6.** The chart of minimum and maximum temperature in Suwalki, 10.03.2022-30.06.2018 [74].



**Figure S7.** The chart of minimum and maximum temperature in Suwalki, 10.03.2022-30.06.2019 [74].

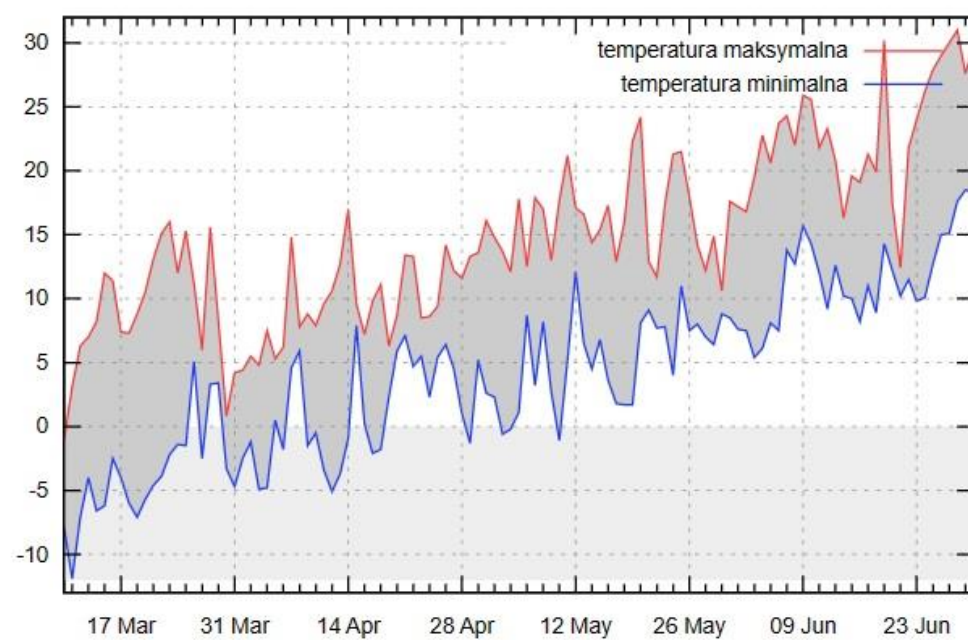


**Figure S8.** The chart of minimum and maximum temperature in Suwalki, 10.03.2020-30.06.2020 [74].



**Figure S9.** The chart of minimum and maximum temperature in Suwalki, 10.03.2021-30.06.2021 [74].





**Figure S10.** The chart of minimum and maximum temperature in Suwalki, 10.03.2022-30.06.2022 [74].