

Supplementary Materials

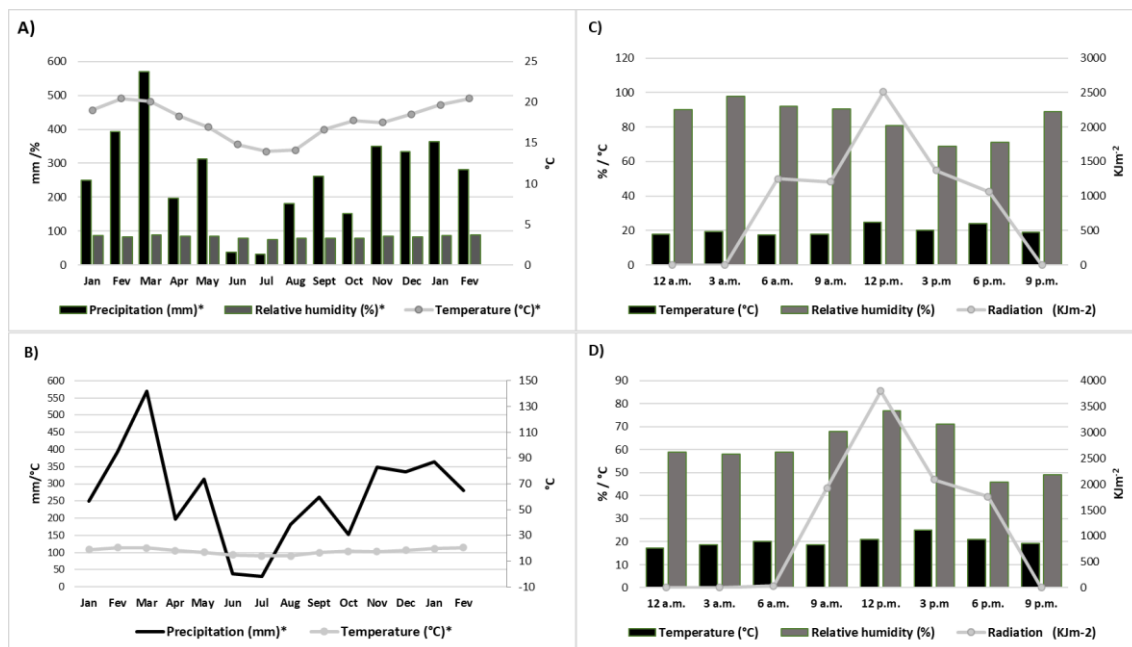


Figure S1. Climatic data of the Serra dos Órgãos National Park area, Teresópolis City (Brazil) during the collections of *Piper lhotzkyanum* Kunth leaves. Data collected from reference INMET (2019–2021). Monthly averages of temperature, precipitation, and relative humidity from January to December 2019 and January to February 2020 (A). Ombrothermal diagram from January to December 2019 and January to February 2020 (B). Data of temperature, relative humidity, and radiation from the leaves' collection time for the circadian study in July 2019 (D) and January 2020 (C).

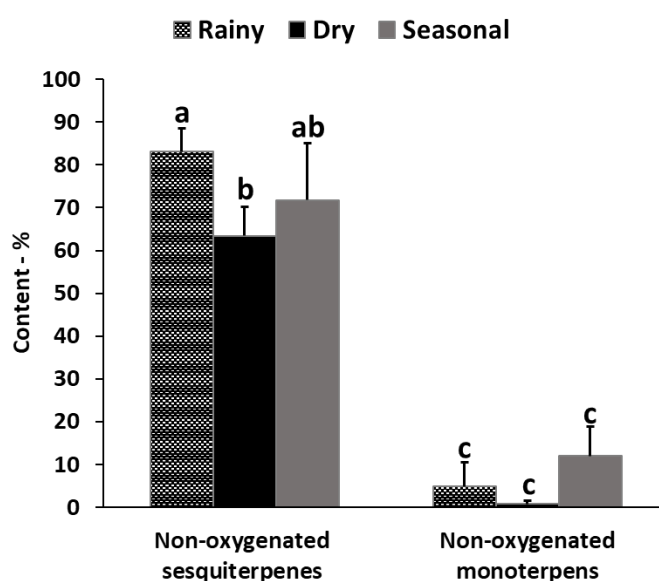


Figure S2. Variations in the Percentage of Chemical Class Contents in the Essential Oils from *Piper lhotzkyanum* Kunth Leaves.

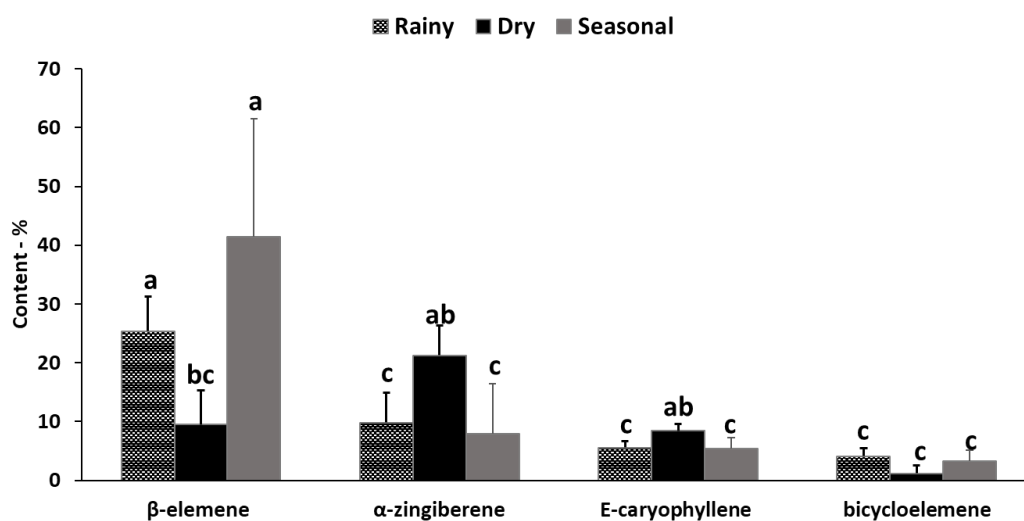


Figure S3. Variations in the Percentage of Major Components in the Essential Oils from *Piper lhotzkyanum* Kunth Leaves.

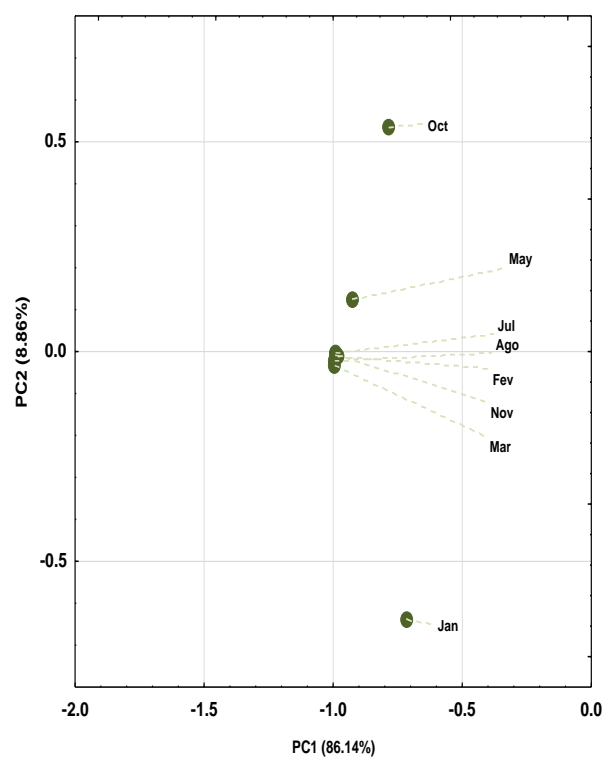


Figure S4. Biplot (Principal Component Analysis—PCA) Resulting from the Analysis of the Essential Oils Obtained from leaves of *Piper lhotzkyanum* Kunth (Piperaceae) Collected for the Seasonality Study.