

Article

The Genus *Nama*, with the Description of 14 New Species (Curculionidae, Entiminae, Namaini) [†]

Massimo Meregalli ^{1,*}  and Roman Borovec ²

¹ Department of Life Sciences and Systems Biology, University of Torino, Via Accademia Albertina, 13, 10123 Torino, Italy

² Independent Researcher, Sloupno 64, 503 53 Smidary, Czech Republic; roman.borovec@bcas.cz

* Correspondence: massimo.meregalli@unito.it

[†] Zoobank registration: urn:lsid:zoobank.org:pub:C1797BF1-0EFC-474E-A464-3D977E71438D.

Abstract: The authors complete the study of the genus *Nama* Borovec & Meregalli, 2013, one of the seven genera of the tribe Namaini Meregalli & Borovec, 2021, with the description of 14 new species: *Nama chaslavskae* (type locality: North of Aggeneys, 29°12' S 18°50' E); *N. startorum* (type locality: Danielskuil, 28°11' S 23°33' E); *N. ginobartalii* (type locality: Messelpad Pass, 29°54' S, 17°44' E); *N. yusrae* (type locality: Wildepaarde Hoek, 29°57' S 17°33' E); *N. goegapensis* (type locality: Goegap Park, Kraaifontein, 29°37' S, 18°02' E); *N. semilunata* (type locality: Gemsbok Vlakke frm., 30°30' S 17°29' E); *N. martiana* (type locality: Aggeneys, Gamsberg, 1116 m, 29°15' S, 18°57' E); *Nama smithi* (type locality: Tswalu Kalahari Reserve, Pass South, 27°19' S, 22°31' E); *N. kostali* (type locality: near Danielskuil, 28°15' S, 23°34' E); *Nama seriehispida* (type locality: NE Bitterfontein, 30°53' S, 18°19' E); *N. khalidae* (type locality: SW Kliprand, 30°40' S, 18°41' E); *N. switzeriae* (type locality: W Gamoep, 29°58' S, 18°22' E); *N. peternormani* (type locality: Anenous Pass, 29°14' S, 17°35' E); *N. wallacei* (type locality: Pofadder, 29°07' S, 19°25' E). Short biogeographical remarks are added.

Keywords: taxonomy; South Africa; weevils; new taxa



Citation: Meregalli, M.; Borovec, R. The Genus *Nama*, with the Description of 14 New Species (Curculionidae, Entiminae, Namaini). *Diversity* **2023**, *15*, 944. <https://doi.org/10.3390/d15080944>

Academic Editor: Michael Wink

Received: 15 July 2023

Revised: 11 August 2023

Accepted: 16 August 2023

Published: 20 August 2023



Copyright: © 2023 by the authors. Licensee MDPI, Basel, Switzerland. This article is an open access article distributed under the terms and conditions of the Creative Commons Attribution (CC BY) license (<https://creativecommons.org/licenses/by/4.0/>).

1. Introduction

Recent research by the authors has led to the discovery of an extraordinary diversity of the edaphic entimine weevil fauna of the western part of South Africa, which is composed of hundreds of species and tens of genera, all previously unknown, belonging to a monophyletic clade. This astonishing number of taxa led to two initial contributions published by the authors. In the first paper, a new genus with four new species from the Richtersveld National Park was described [1]; in the second, a phylogenetic analysis of all the morphospecies was conducted, and the results allowed the description of a new tribe, with six more new genera [2]. In this paper we analyse the genus *Nama*, with the description of 14 new species.

2. Material and Methods

The specimens used in this study were collected by sifting underneath shrubs and under stones and killed in ethyl acetate vapour immediately after collecting. Dissections were made by excision of the whole abdomen, which was subsequently treated for about ten minutes in a 10% KOH solution. The ventrites were mounted on the same card on which the rest of the specimen was mounted, the male and female genitalia were either embedded in Solakryl (Medika, Prague, Czech Republic) on the same card or preserved in glycerol in minivials pinned on the same pin as the rest of the specimen. The terminology mainly follows Lyal [3], with a partial exception for the female genitalia and the definitions of frons and epifrons, whose terminology follows Oberprieler [4]. The photographs were taken with a Nikon P6000 camera fixed to the 20× ocular of a Leica stereomicroscope. A series of photographs were taken and a stack was performed with Zerene Stacker 1.04 (Zerene

Systems LLC). The final images were processed using Photoshop CS3 (Adobe Systems Inc., San Jose, CA, USA). The map was created from Google Earth and also processed using Photoshop CS3.

All type specimens were mounted on labels, with genitalia glued to the same label, usually behind the specimen. Type specimen labels are cited verbatim; separate labels are indicated by double slash (//), separate lines by a simple slash (/). Holotypes and paratypes bear a further printed red label “HOLOTYPUS [PARATYPUS]/*Nama* [species name] sp. nov./M.Meregalli & R.Borovec des. 2023”. Abbreviations: lgt, leg. = legit/legerunt [collected].

The specimens examined are deposited in the following collections:

BMNH: Natural History Museum, London, United Kingdom (formerly British Museum of Natural History)

CMNC: Canadian Museum of Nature Collection, Ottawa, Canada

MKŠS: Michael Košťál private collection, Šoporňa, Slovakia

MMTI: Massimo Meregalli private collection, Torino, Italy

NMBH: National Museum, Bloemfontein, South Africa

RBSC: Roman Borovec private collection, Sloupno, Czech Republic

SANC: National Collection of Insects, Pretoria, South Africa

TMSA: Ditsong National Museum of Natural History (formerly Transvaal Museum), Pretoria, South Africa

3. Taxonomy

3.1. The Genus *Nama* Borovec & Meregalli, 2013

Nama Borovec & Meregalli 2013: 504 (original description) [1]; Meregalli et al., 2021: 12 (genus redefinition) [2].

The genus *Nama* Borovec & Meregalli, 2013 (type species: *N. richtersveldiana* Borovec & Meregalli, 2013) was described for four new species of small entimines from the Richtersveld National Park [1]. The three non-type species originally described in *Nama* were later placed into different new genera [2]. Five more field trips to the Western and Northern Cape provinces by both authors allowed for the collection of over 60 more undescribed taxa, related to the genus *Nama*, which were provisionally identified as numbered morphospecies. After a phylogenetic study [2], these taxa were included in seven genera, six of which were new, belonging to the new tribe Namaini Borovec & Meregalli, 2021. In the cited paper, only the type species of the new genera were described; the remaining taxa were simply listed according to their morphospecies identification number. All the species belonging to the seven genera will be described in a series of further contributions, currently in preparation. The present paper deals with the genus *Nama* and includes the descriptions of 14 new species. See [1,2] for the description and a more precise definition and redescription of the genus.

Biology. The majority of the specimens were collected by litter sifting from large *Euphorbia dregeana* E. Mey and *E. mauritanica* L. shrubs in arid, semi-desert habitats. One species was gathered in the Tswalu Kalahari Reserve by litter sifting from *Euclea undulata* Thunb, while two more were found by litter sifting from Chenopodiaceae shrubs.

Distribution. The known species of the genus are distributed in South Africa, in the Northern Cape Province and northern part of the Western Cape Province (Figure 1).

Phylogeny and biogeography. The phylogenetic relationships of the genus *Nama* within the tribe Namaini have been discussed in Meregalli et al. [2]. The genus includes two different groups of species, geographically isolated. One of these is present in Namaqualand and the desert areas on the southern side of the Orange River, and the other is distributed in a savanna shrubland on the eastern part of Northern Cape, east of the Orange River.

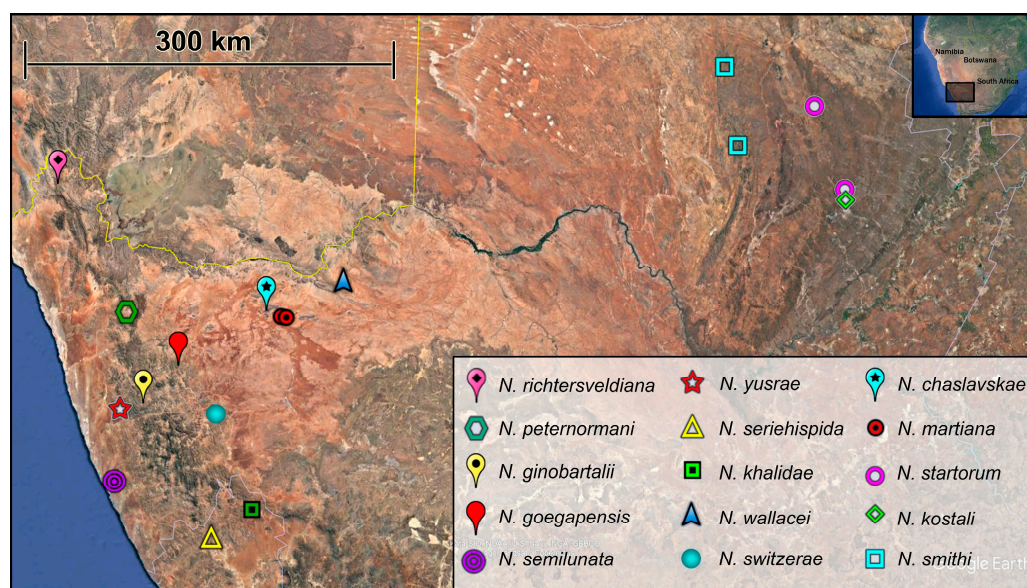


Figure 1. Distribution map of the genus *Nama*. Map data: Google Earth, Maxar Technologies, used according to Google Earth Terms of Service.

The molecular sequence is only available for one of this second group of species; as expected, it falls in a lineage distinct from the other species. Morphologically, the *Nama* from the savanna share a straight margin of the ventrite 1, whereas all the species from the other group have a more or less curved margin of the ventrite 1, and, as a consequence, the ventrite 2 is very short, with the partial exception of *N. martiana* sp. n., which has the ventrite 1 very feebly curved at the margin, and a rather long ventrite 2. The two species groups, derived from a common ancestor, appear to have evolved independently in the two regions. At present, it is not easy to explain the range of the genus based on a historical biogeography approach. It is known that in the late Cretaceous a Karoo river flowed to the Atlantic Ocean, in a region that corresponds to the southern range of the genus, whereas the northern limits of the range of the two groups of species appears to be associated with the course of the Cretaceous Kalahari [5], which approximately corresponds to the lower course of the present day Orange River. Obviously, Cretaceous geological events cannot explain the actual distribution of these specialized Entiminae, whose differentiation is much more recent [6]. The geological constraints to a northwards expansion of the scarcely vagile entimines of the genus *Nama*, and the tribe Namaini as a whole, correspond to the Kalahari-Orange river, which has remained more or less constant from the Cretaceous to the present time, and might have determined the northernmost limit of their distribution. Regarding the southern limits of the range, and the disjunct distribution of the two species groups, it seems likely that they derive from adaptation to, respectively, the Namaqualand bioregion of the Succulent Karoo biome and the Savanna biome. However, only after the large number of taxa that remain undescribed are studied will better hypotheses of the biogeographic origin and distribution of the tribe Namaini be formulated.

Differential diagnosis. The genus *Nama* is differentiated from the other genera of Namaini by the following set of characters: epifrons very wide, occupying the majority of the dorsal area of the rostrum; frons squamose; antennal sockets in dorsal view invisible or narrowly visible on anterior part, in lateral view subtriangular; distinctly enlarged posteriad, with the dorsal margin parallel to the dorsal margin of the rostrum and the ventral margin directed towards the lower half of the eye; the pronotum in some species conspicuously broadened laterally to form dorso-ventrally flattened lobes; the lateral erect setae of the pronotum well differentiated, often very long; the protibiae apically rounded, enlarged laterally and mesally, armed with sparse, stout spines; the tarsi long and slender; the ventrites squamose; the apical margin of the ventrite 1 in many species more or less

distinctly curved; the apodeme of the female sternite VIII terminating inside an oval plate; the gonocoxites with short apical styli.

3.2. *The Type Species, Nama Richtersveldiana* Borovec & Meregalli, 2013

Nama richtersveldiana Borovec & Meregalli 2013: 504 (original description) [1]; Meregalli et al., 2021: 12 (note) [2].

Figure 2 (Morphology); Figure 17d,p (Terminalia)

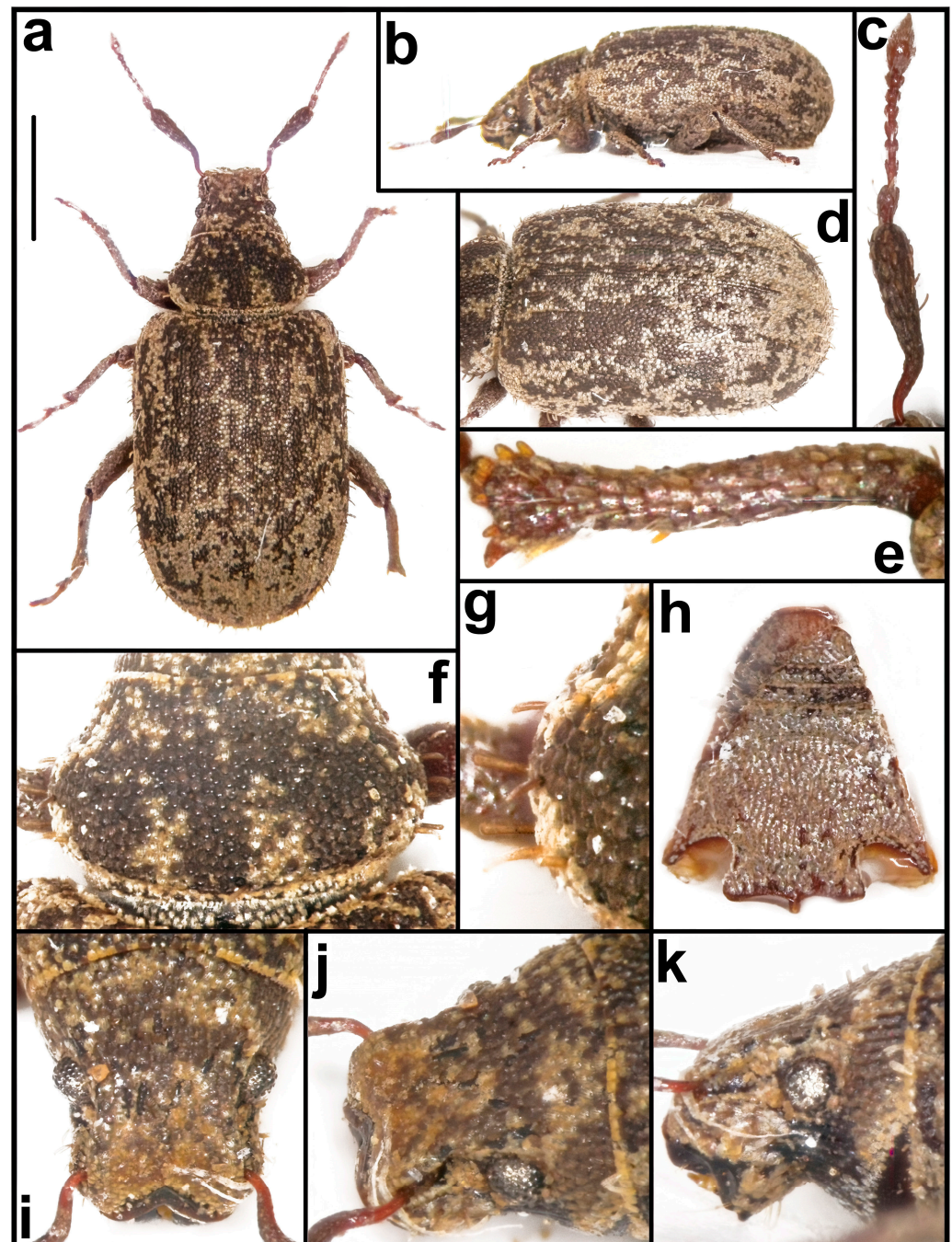


Figure 2. *Nama richtersveldiana* Borovec & Meregalli, 2013. Habitus photographs. Dorsal view (a), lateral view (b); antenna (c); elytra, dorso-lateral view (d); pronotum, dorsal view (f), detail of sides (g); ventrites (h); protibia (e); rostrum, dorsal view (i), dorso-lateral view (j), lateral view (k). Bar: 1 mm (from Meregalli & al. [2]).

Type material. 13 spec., South Africa, Northern Cape, Richtersveld National Park, 5.5 km N of Helskloof Pass, 28°17.211' S 16°59.378' E, 570 m, 22.ix.2012, M. Meregalli legit (TMSA, MMTI, RBSC); 2 spec., same data but 2.xi.2011 (RBSC).

Redescription. Body length 2.69–3.43 mm. Body densely covered with regularly rounded, isolated appressed scales, 4–5 across each interstria. Lateral erect setae of pronotum subrectangular, slender, about 4× as long as wide. Each interstria with a regular row of erect, subspatulate, apically rounded setae, about as long as half one interstria width; distance between two setae about 2× one seta length. Ventrites with scales elongate, partly imbricate, glossy. Elytra marbled with small light and dark brown spots; pronotum with three longitudinal dark brown stripes.

Rostrum 1.79–1.95× as wide as long, subparallel-sided, with straight to slightly concave sides; epifrons wide, as wide at base as at apex, with slightly concave sides; dorsally flat, with slender U-shaped stria opened anteriorly, extended from between posterior margin of eyes to antennal insertions. Antennal insertions not visible in dorsal view. Eyes small, moderately prominent from outline of head; in lateral view placed in upper half of head. Vertex wide, flat; head distinctly enlarged posteriorly, with rounded sides.

Antennae slender, scape 4.9–5.1× as long as wide at apex, in basal quarter slender, distinctly S-shaped, gradually thickened apically, elongate subtriangular, at apex 1.3–1.4× as wide as club. Funicle 7-segmented, segment 1 1.6–1.8× as long as wide and 1.5–1.7× as long as segment 2, this 1.7–1.9× as long as wide; segments 3 and 4 1.3–1.5× as long as wide; segment 5 1.2–1.3× as long as wide; segment 6 1.1–1.2× as long as wide; segment 7 as long as wide; club slender, 2.2–2.3× as long as wide.

Pronotum 1.65–1.74× as wide as long, widest at basal third, distinctly constricted behind anterior margin, lateral lobes not clearly expanded, only forming strongly curved sides; disc regularly domed; base arched; pronotum in lateral view flat.

Elytra long oval, 1.48–1.55× as long as wide, subparallel-sided, apically broadly rounded; striae very narrow, interstriae flat; base arched; elytra in lateral view flat.

Protibiae moderately slender, 6.1–6.4× as long as wide at midlength, apex rounded, slightly widened laterally and medially, armed with 6 yellow, short, stout spines and brown mucro. Tarsi slender and long; segment 2 1.1× as wide as long; segment 3 1.2–1.3× as wide as long and 1.7–1.8× as wide as segment 2; onychium long, 2.1–2.2× as long as segment 3.

Ventrites slender, long triangular, length/width ratio 1.12, sides linearly convergent from base of ventrite 1 to ventrite 5; ventrite 1 strongly curved above ventrite 2, at midwidth 1.25× as long as ventrites 2–5 together; ventrite 5 almost semicircular.

Penis long and slender, more than twice as long as wide, subparallel-sided, apex rounded.

Female sternite VIII with plate small, oval, about as long as wide, with basal margin translucent; apodeme terminating inside plate, here Y-shaped. Spermatheca with short and slightly curved cornu; corpus large, rounded; ramus robust, straight, almost twice as long as wide; collum small, distinctly shorter and narrower than ramus, subtriangular, curved.

Biology. All the known specimens were sifted under a single Chenopodiaceae shrub.

Differential remarks. *Nama richtersveldiana* is similar to *N. khalidae* (Figure 13) and *N. switzeriae* (Figure 14), which mainly differ in the short ventrites, wider than long; the slightly shorter elytra (length/width ratio 1.40–1.45 vs. >1.50 in *N. richtersveldiana*); the margins of the epifrons slightly raised basally; the antennal scape simply curved at base, not distinctly S-shaped; and the short lateral setae of the pronotum; the latter also has the pronotal and elytral scales partly imbricate, not reciprocally isolated.

3.3. Description of the New Species

The 14 new species are here described. The species sequence follows the key of the genus (see Section 3.4)

Nama chaslavskae Meregalli & Borovec sp. n.

Nama sp. 527 in Meregalli et al., 2021 [2].

Figure 3 (Morphology); Figure 17f,m (Terminalia)

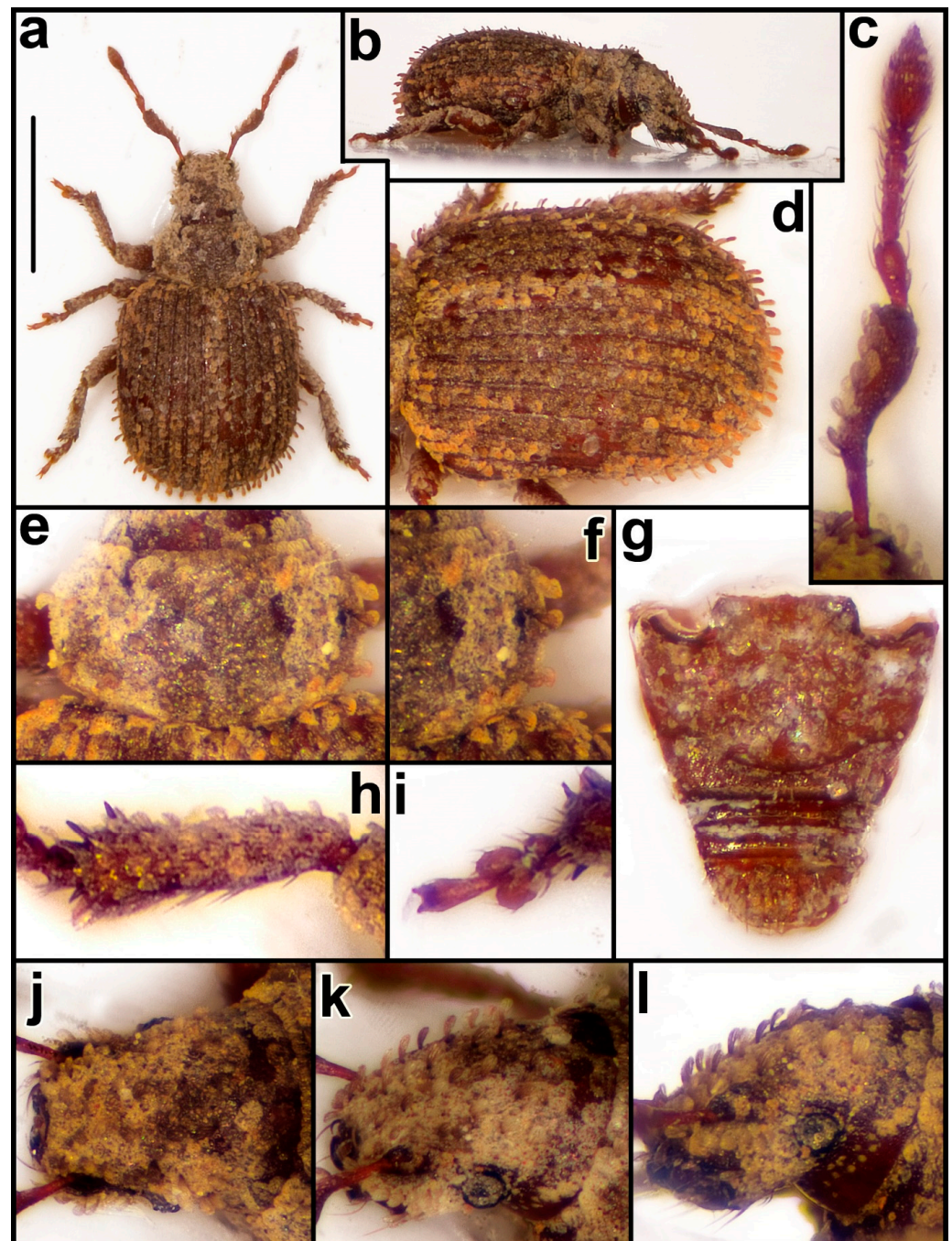


Figure 3. *Nama chaslavskae* sp. n. Habitus photographs. Dorsal view (a), lateral view (b); antenna (c); elytra, dorso-lateral view (d); pronotum, dorsal view (e), detail of sides (f); ventrites (g); protibia (h); protarsus (i); rostrum, dorsal view (j), dorso-lateral view (k), lateral view (l). Bar: 1 mm.

Zoobank registration: urn:lsid:zoobank.org:act:2048FCCE-2F91-4BDD-B179-3E990BA10787

Type material. Holotype: ♂, RSA Northern Cape 890 m/North of Aggeney's 3.xi.2018/29°12.324' S 18°50.549' E/R. Borovec & M. Meregalli lgt.//sifting of litter under/shrubby *Euphorbia* (TMSA). **Paratypes:** 2 ♀♀, same data as the holotype (MMTI, RBSC).

Description. Body length: holotype 1.94 mm, paratypes 2.53–2.56 mm. Body covered with moderately large, rounded appressed scales, 2 across each interstria; scales on pronotum irregularly inserted, appressed and imbricate. Interstriae with one regular row of semi-erect, subspatulate setae, slightly longer than half interstria width, distance between two setae 2× one seta length. Head, rostrum and pronotum with similar setae, densely

and irregularly scattered, slightly shorter than elytral ones; pronotum with about 3–4 erect short spatulate lateral setae at midlength, as long as wide. Dorsal vestiture light brown, elytra with small dark brown spots, pronotum with three scarcely distinct longitudinal dark brown stripes, median stripe larger and clearly delimited. Ventrites glossy, ventrites 1–4 with scales similar to those of dorsum; ventrite 5 with slender spatulate scales and hair-like setae.

Rostrum $1.67\text{--}1.79\times$ as wide as long, slightly tapering apicad, with straight sides; epifrons distinctly tapering apicad, with concave sides, at base $1.41\text{--}1.45\times$ as wide as at apex, dorsally flat, with slender median longitudinal stria reaching anterior pronotal margin. Antennal scrobes in dorsal view narrow, visible in anterior half. Eyes small, in dorsal view slightly prominent from outline of head, in lateral view placed at bottom third of head thickness. Vertex wide, distinctly domed.

Antennae slender; scape $4.9\text{--}5.1\times$ as long as wide at apex, curved at middle, outer margin strongly curved at apical third, evenly enlarged in apical half, at apex subequal to club width. Funicle 5-segmented; segments 1 and 2 slender, segment 1 $2.5\times$ as long as wide and $1.4\times$ as long as segment 2, this $3.1\text{--}3.3\times$ as long as wide, distinctly narrower than 1; segment 3 $1.2\text{--}1.3\times$ as long as wide; segment 4 $1.1\text{--}1.2\times$ as long as wide; segment 5 subquadrate. Club $1.7\text{--}1.8\times$ as long as wide.

Pronotum in male shorter, $1.83\times$ as wide as long, in females $1.71\text{--}1.76\times$ as wide as long, widest at midlength, with rounded sides, distinctly more narrowing anteriorly than posteriorly; in lateral view slightly vaulted.

Elytra short oval, in males shorter, $1.16\times$ as long as wide, in females $1.26\text{--}1.29\times$ as long as wide, humeral calli broadly rounded, then subparallel-sided, apically broadly rounded; in lateral view almost flat. Striae moderately wide, finely punctured.

Protibiae $4.3\text{--}4.4\times$ as long as wide at midlength; lateral margin almost straight, only indistinctly enlarged at apex; apex with 5 moderately long, dark brown acute spines, mucro light brown, spines in males shorter and finer than in females. Tarsi with segment 2 $1.1\text{--}1.2\times$ as wide as long; segment 3 $1.3\text{--}1.4\times$ as wide as long and $1.5\times$ as wide as segment 2; onychium $1.2\text{--}1.3\times$ as long as segment 3.

Ventrites regularly triangular, $1.1\times$ as long as wide, ventrite 1 scarcely broadened, suture with ventrite 2 straight at sides, strongly curved medially; ventrite 1 $1.1\times$ as long as ventrites 2–5 together, ratio ventrite 1/ventrites 2–5 together 1.1; ventrite 5 transverse, $2\times$ as wide as long.

Penis short and wide, evenly enlarged from base to apical portion with straight sides, apically narrowed in very short part, tip small, rounded.

Female sternite VIII with plate umbrella-shaped, more than twice as wide as long. Spermatheca with cornu long and slender; ramus and collum subequal in size, respectively V-shaped, both apically obtuse.

Biology. The type specimens were sifted from litter under *Euphorbia* sp.

Origin of the name. This species is named after Věra Čáslavská (1942–2016). She was an artistic gymnast and Czech sports official. In addition to her gymnastic success, she was known for her consistent outspoken support of the Czechoslovak democratization movement in 1968. After the Soviet invasion, Čáslavská's actions resulted in her becoming a *persona non grata* in the new regime. She was forced into retirement and for many years was denied the right to travel, work, and attend sporting events. The letter "Č" of Čáslavská is here transliterated "ch", in order to make its pronunciation more similar to the real pronunciation of the name Čáslavská

Differential remarks. This is the only species of the genus with 5-segmented funicle.

Nama startorum Meregalli & Borovec sp. n.

Figure 4 (Morphology); Figure 17j,u (Terminalia)

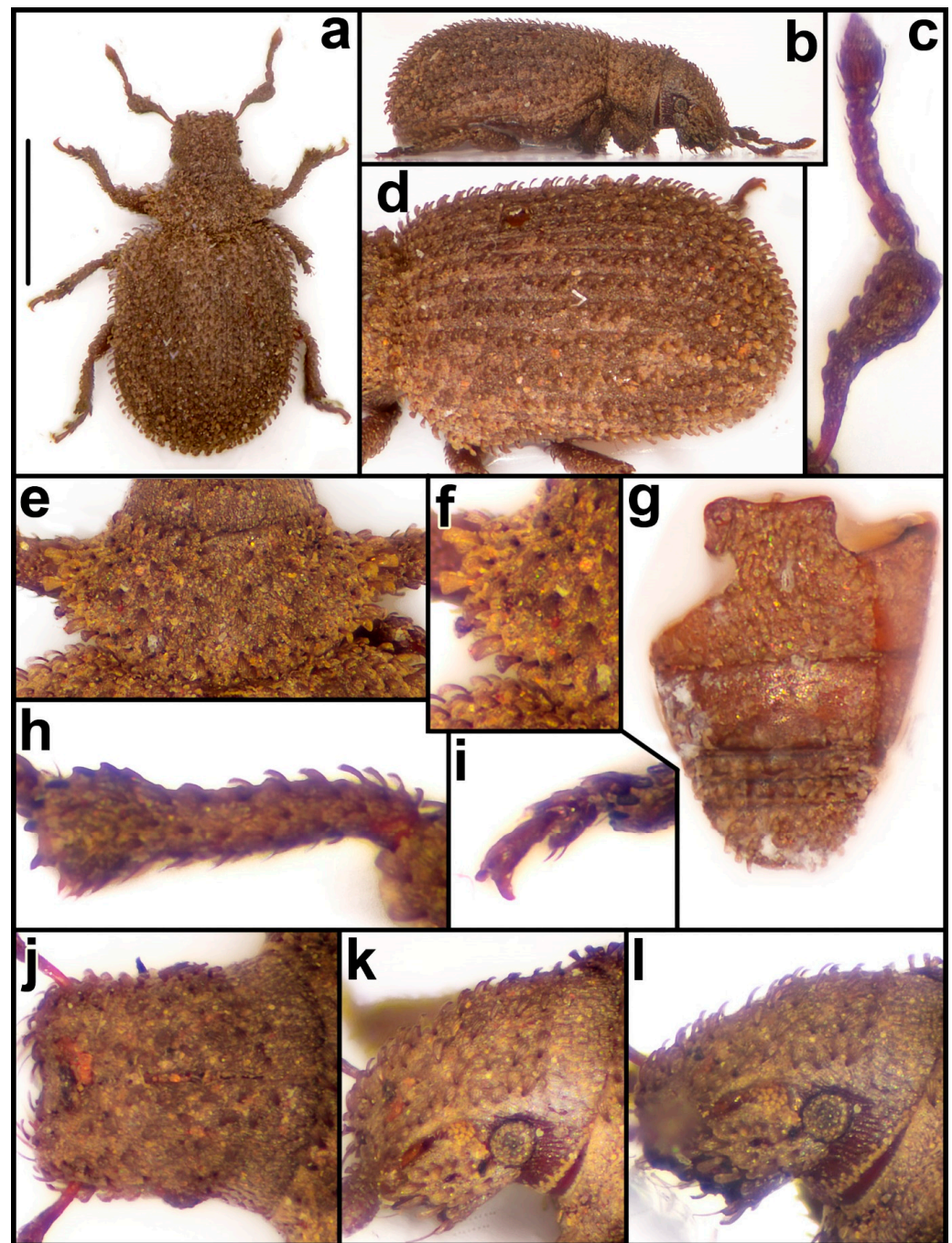


Figure 4. *Nama startorum* sp. n. Habitus photographs, dorsal view (a), lateral view (b); antenna (c); elytra, dorso-lateral view (d); pronotum, dorsal view (e), detail of sides (f); ventrites (g); protibia (i); protarsus (h); rostrum, dorsal view (j), dorso-lateral view (k), lateral view (l). Bar: 1 mm.

Zoobank registration: urn:lsid:zoobank.org:act:7BF70AD2-69A5-4A93-906A-85297A33F36A

Type material. Holotype: ♀, S. [South] Africa, CP [Cape Province, Northern Cape now]/Danielskuil/SE2823Ba [28°11' S, 23°33' E]//24. Jan.1983/C. M. Engelbrecht lgt. (NMBH). **Paratypes:** 1 ♂1 ♀, same data as the holotype, 1 ♂, same data but 10 km from Kuruman on Danielskuil Rd [approx. 27°33' S, 23°28' E] (NMBH).

Description. Body length 2.03–2.56 mm, holotype 2.28 mm. Body densely covered with densely appressed scales without discernible structure. Each interstria with short and dense, semi-erect, subspatulate setae, apically rounded, as long as 1/3 of one interstria width, distance between two setae as long as or shorter than one seta length; setae aligned

in one irregular row on interstriae 2–7, in some specimens on 5–7 aligned in two irregular rows; setae on pronotum and head with rostrum slightly shorter than elytral setae, very densely irregularly scattered; lateral setae of pronotum broadly spatulate, slightly longer than wide, numerous, relatively evenly distributed. Ventricle 1 with small oval scales, 2 with large round translucent scales, 3–5 with short slightly raised scales; ventrite 5 with relatively dense elliptical raised setae. Vestiture uniformly light brown.

Rostrum $1.78\text{--}1.86\times$ as wide as long, subparallel-sided to indistinctly tapering apicad, with straight sides; epifrons as wide as rostrum, with straight sides, at base as wide as at apex, dorsally flat, with distinct longitudinal median furrow, extended behind posterior margins of eyes. Antennal scrobes invisible in dorsal view. Eyes small, weakly vaulted and weakly prominent from outline of head; in lateral view placed slightly above mid thickness of head. Vertex wide, regularly weakly domed; head slightly enlarged posteriad.

Antennae short; scape $3.8\text{--}4.0\times$ as long as wide, curved at basal third, in apical two thirds strongly thickened, at apex $1.4\text{--}1.5\times$ as wide as club. Funicle segment 1 long, conical, $1.6\text{--}1.7\times$ as long as wide and twice as long as segment 2, this $1.2\text{--}1.3\times$ as long as wide; segments 3–5 $1.2\text{--}1.3\times$ as wide as long; segment 6 $1.3\text{--}1.4\times$ as wide as long; segment 7 $1.5\text{--}1.6\times$ as wide as long; club $1.7\text{--}1.8\times$ as long as wide.

Pronotum short and very wide, $2.14\text{--}2.29\times$ as wide as long, widest slightly behind midlength, distinctly constricted behind anterior margin, lateral lobes scarcely expanded; disc regularly domed; base arched; pronotum in lateral view flat.

Elytra oval, $1.21\text{--}1.27\times$ as long as wide, subparallel-sided, apically broadly rounded; base arched. Striae narrow; interstriae flat. Elytra in lateral view slightly vaulted.

Protibiae robust, $4.9\text{--}5.1\times$ as long as wide at midlength, apically broadly regularly rounded, with 5–6 sparse, short blackish spines and short light brown mucro. Tarsi with segment 2 $1.2\text{--}1.3\times$ as wide as long; segment 3 $1.2\text{--}1.3\times$ as wide as long and $1.2\text{--}1.3\times$ as wide as segment 2; onychium long, $1.6\text{--}1.8\times$ as long as segment 3. Ventriles scarcely broadened basad, length/width ratio 1.14, sides regularly slightly curved from ventrite 1 to 4; ventrite 1 with straight linear margin, at midwidth $0.76\times$ as long as 2–5 together; ventrite 2 distinctly longer than 3–4 together; ventrite 5 strongly transverse.

Penis widest at base, slightly evenly tapering apicad with almost straight sides, at apical portion tapering apicad with slightly rounded sides, tip narrowly rounded.

Female sternite VIII with plate umbrella-shaped, wider than long and apodeme terminating inside plate, simple. Spermatheca with cornu long and almost straight; ramus short, as long as wide; collum long, about $5\times$ as long as wide, apically pointed, distinctly curved backwards.

Biology. Unknown.

Origin of the name. In 1942 in Kiev, under Nazi occupation, former footballers linked to the resistance organised a football team, named START F.C. The Nazis organised a tournament with five other teams, all linked to the Nazi regime. The START team won all the competitions, thus providing strong psychological support for the civil resistance against the invaders. The species is dedicated to these sportsmen and, by extension, to people fighting for their freedom.

Differential remarks. *Nama smithi* (Figure 10) has a less transverse pronotum (length/width ratio 0.60 vs. 0.48 in *N. startorum*), lacking lateral lobes and with few slender setae; distantly spaced semi-erect elytral setae; penis widest at midlength and spermatheca with ramus longer than wide and collum curved to the opposite side of cornu.

Nama ginobartalii Meregalli & Borovec sp. n.

Nama sp. 426 in Meregalli et al., 2021 [2].

Figure 5 (Morphology); Figure 17a (Terminalia)

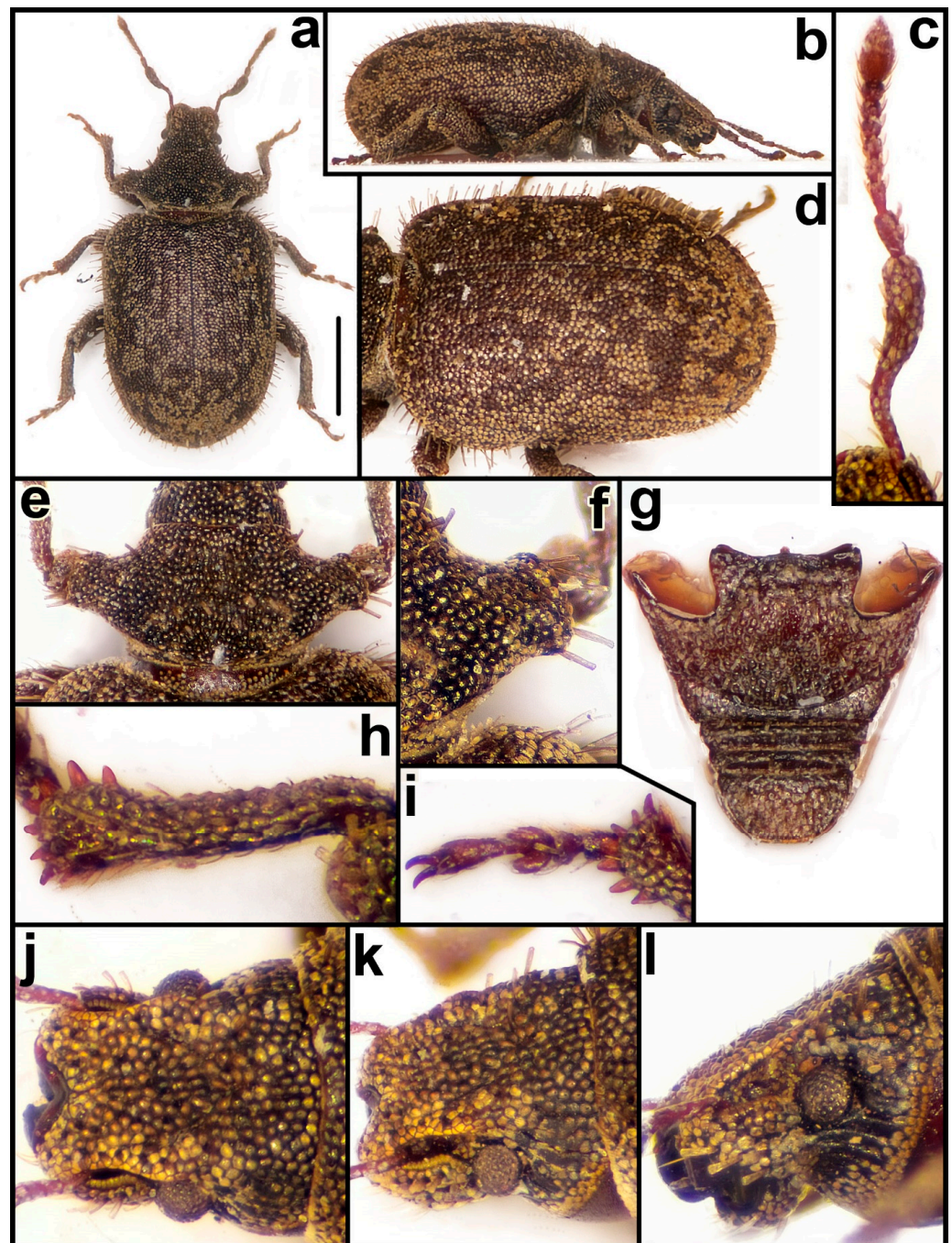


Figure 5. *Nama ginobartalii* sp. n. Habitus photographs, dorsal view (a), lateral view (b); antenna (c); elytra, dorso-lateral view (d); pronotum, dorsal view (e), detail of sides (f); ventrites (g); protibia (h); protarsus (i); rostrum, dorsal view (j), dorso-lateral view (k), lateral view (l). Bar: 1 mm.

Zoobank registration: urn:lsid:zoobank.org:act:0460F105-9B95-41BA-BD5C-DE796365B295

Type material. Holotype: ♂, RSA, Northern Cape/Messelpad Pass/29°54.597' S, 17°44.282' E/14.xi.2016 370 m//sifting of detritus, dry/leaves and branches/below shrubby *Euphorbia*/R. Borovec & M. Meregalli lgt. (TMSA). **Paratype:** 1♂1♀ fragment, same data as the holotype (♀RBSC, ♂, fragment MMTI).

Description. Body length: holotype 3.28 mm, paratype 3.91 mm. Body densely covered with isolated, regularly rounded, finely striate appressed scales, reciprocally distinctly isolated, 4–5 across each interstria. Interstriae with one regular row of erect setae; setae narrowly subspatulate, at least 5× as long as wide at apex, slightly evenly enlarged

apicad and apically obtuse or sharply cut, as long as $2/3$ of interstria width; distance between two setae about $2\times$ one seta length. Setae on pronotum and head with rostrum densely and irregularly scattered, pronotal setae as long as elytral ones, rostrum with setae shorter; setae at margin of lateral lobes of pronotum about 5, very slender, $7\times$ as long as wide. Ventrites with isolated glossy scales, ventrites 1 and 2 with sparse straight erect setae. Predominant colour of vestiture dark brown, elytra with variegated light and dark brown spots.

Rostrum $1.84\text{--}1.96\times$ as wide as long, at base about as wide as at apex, with regularly rounded sides; epifrons distinctly broadened at base, tapering apicad, with slightly concave sides, base $1.22\text{--}1.27\times$ as wide as apex, dorsally flat, slightly impressed near base, lateral margins slightly convex, with distinct U-shaped stria, opened apicad. Antennal scrobes in dorsal view narrowly visible in anterior part as narrow furrows. Eyes strongly vaulted, distinctly prominent from outline of head; in lateral view placed slightly below middle of head thickness. Vertex wide, regularly domed, with short median longitudinal stria; head behind eyes with regularly rounded sides.

Antennae slender; scape $5.1\text{--}5.3\times$ as long as wide at apex, S-shaped, distinctly curved at basal and apical third, evenly slightly enlarged in apical half, at apex $1.1\text{--}1.2\times$ as wide as club. Funicle 7-segmented; segment 1 $2.0\text{--}2.1\times$ as long as wide and $1.6\text{--}1.7\times$ as long as segment 2, this $1.6\text{--}1.8\times$ as long as wide; segments 3 and 4 $1.1\text{--}1.2\times$ as long as wide; segment 5 as long as wide; segments 6 and 7 $1.1\times$ as wide as long; club $1.7\text{--}1.8\times$ as long as wide.

Pronotum short and wide, $2.14\text{--}2.19\times$ as wide as long, behind anterior margin distinctly constricted, base distinctly rounded, laterally with conspicuous, dorso-ventrally flattened lobes; lobes laterally wide and rounded, with anterior and posterior margin concave. Pronotum on disc slightly regularly domed; in lateral view flat.

Elytra long oval, $1.33\text{--}1.35\times$ as long as wide, widest behind broadly rounded humeral calli, with parallel sides, apically broadly rounded; in lateral view flat; base arched. Interstriae wide and flat; striae narrow, finely punctuate.

Protibiae $5.2\text{--}5.4\times$ as long as wide; apically regularly rounded and laterally widened, armed with 5–6 sparse, short, stout, brown-yellowish spines of equal size, mucronate; spines in males slightly shorter and smaller than in females. Tarsi with segment 2 $1.2\text{--}1.3\times$ as wide as long; segment 3 $1.3\text{--}1.4\times$ as wide as long and $1.4\text{--}1.5\times$ as wide as segment 3; onychium long, $1.9\text{--}2.1\times$ as long as segment 3.

Ventrites short, length/width ratio at base 0.94, sides of ventrites 1 and 2 distinctly broadened, margin of ventrite 1 strongly convex apically from sides, at midwidth longer than 2–5 together, ratio length ventrite 1/length ventrites 2–5 together 1.17; ventrite 5 $2\times$ as wide as long.

Penis long and slender, slightly widest at base, then subparallel-sided with slightly concave sides, apically broadly rounded with very small apical concavity.

Female sternite VIII with moderately large plate, regularly semi-circular, about as wide as long. Spermatheca not examined.

Biology. The type specimens were sifted from under *Euphorbia mauritanica*.

Origin of the name. Gino Bartali (1914–2000) was a champion road cyclist. Bartali earned respect for his work helping Jews who were being persecuted by the Nazis during the time of the Italian Social Republic and used his fame to carry messages and documents to the Italian Resistance. In 2013 he was awarded the honorific Righteous Among the Nations.

Differential remarks. *Nama ginobartalii* is relatively similar to *N. yusrae* (Figure 6), which differs by the larger size; the epifrons not broadened basad before the head; the pronotal lobes moderately prominent, with short spatulate setae; the elytra with scales adjacent one another and short, apically curved spatulate setae and the ventrite 1 distinctly shorter than 2–5 together.

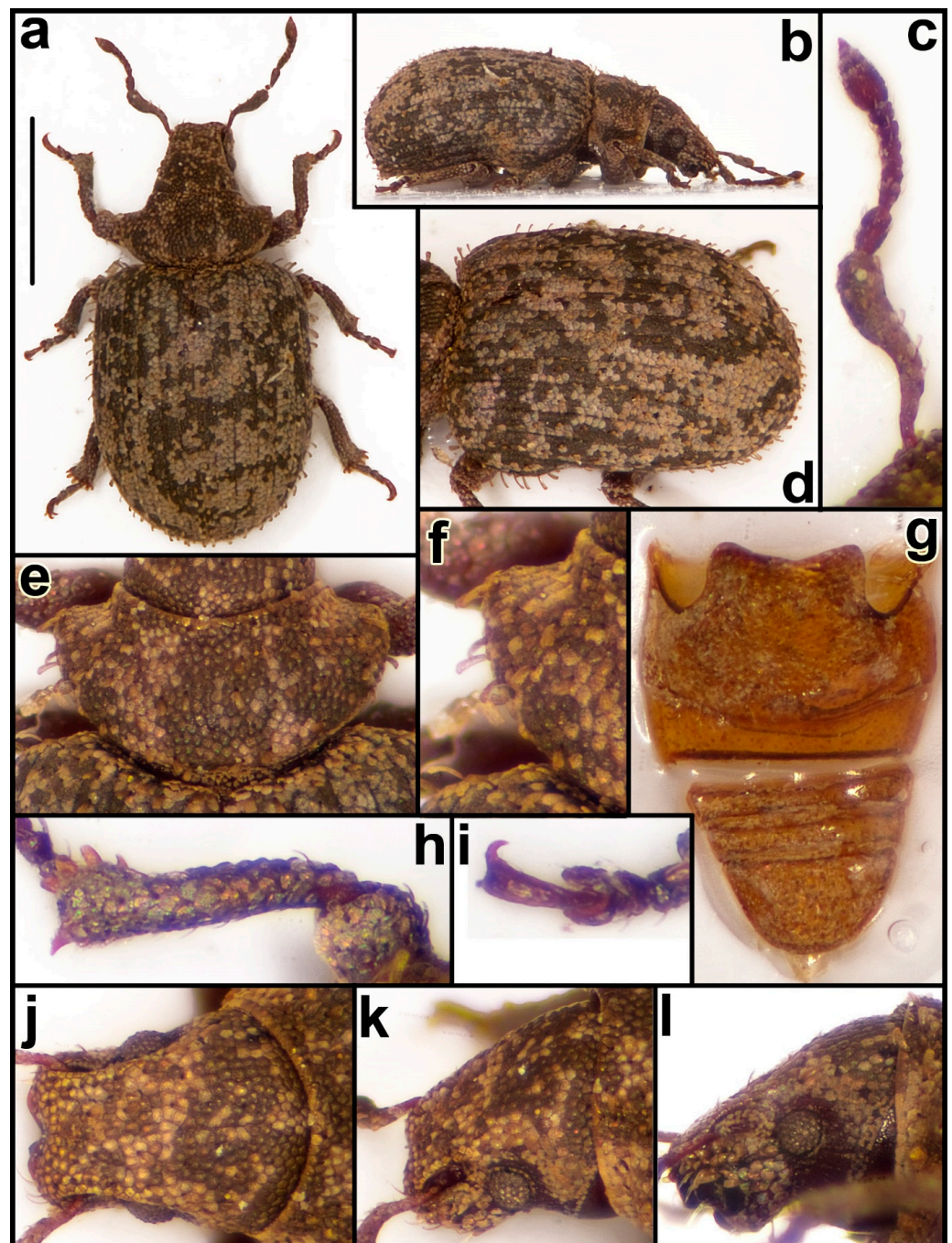


Figure 6. *Nama yusrae* sp. n. Habitus photographs, dorsal view (a), lateral view (b); antenna (c); elytra, dorso-lateral view (d); pronotum, dorsal view (e), detail of sides (f); ventrites (g); protibia (h); protarsus (i); rostrum, dorsal view (j), dorso-lateral view (k), lateral view (l). Bar: 1 mm.

***Nama yusrae* Meregalli & Borovec sp. n.**

Nama sp. 3, in Meregalli et al., 2021 [2].

Figure 6 (Morphology); Figure 17k (Terminalia)

Zoobank registration: urn:lsid:zoobank.org:act:ED66F24C-9155-4909-8746-FB3FD8DCCFE9

Type material. Holotype: ♂, S. Afr., Namaq. [= Namaqualand] Coast/Wildepaaarde Hoek, 29.57 S–17.33 E [= 29°57' S 17°33' E] // 28.8.1977, E-Y: 1351/groundtraps, 60 days/leg. Endrödy-Younga // groundtrap/with banana bait (TMSA) [Note. We have no information on the “groundtraps” used by Endrödy-Younga; they were probably usual pitfall traps].

Paratypes: 1 ♂1 ♀, same data as the holotype (♀TMSA, ♂RBSC). The holotype lacks the onychium of the right foreleg and both hind legs.

Description. Body length 2.13–2.81 mm, holotype 2.19 mm. Elytra covered with large, rounded, finely striate, imbricate appressed scales, 3–4 across each interstria, pronotum and head with rostrum covered with smaller, reciprocally isolated rounded scales. Each interstria with one regular row of semi-erect, subspatulate setae; setae evenly enlarged apicad, about twice as long as wide, apically rounded, as long as 1/3 to 1/4 of interstria width, distance between two setae 4–5× one seta length; setae on humeri and interstria 7 longer and denser. Pronotum and head with rostrum densely and irregularly scattered with setae similar to elytral setae; lateral setae of pronotum 4–5, about 4x as long as wide, spatulate. Body vestiture marbled with grey and dark brown spots. Ventrites light orange-brown, with irregular scales.

Rostrum 1.76–1.85× as wide as long, at base as wide as at apex, with slightly rounded sides; epifrons very wide, occupying almost entire dorsal width of rostrum, slightly tapering apicad, with slightly concave sides, at base 1.09–1.13× as wide as at apex, dorsally flat, with indistinct U-shaped stria and with narrow median longitudinal stria, posteriorly almost reaching anterior margin of pronotum. Antennal scrobes in dorsal view hardly visible as narrow furrows. Eyes vaulted, moderately prominent from outline of head, in lateral view placed at middle of head thickness. Vertex wide, regularly domed; head behind eyes with rounded sides.

Antennae of medium thickness, scape 4.4–4.7× as long as wide at apex, S-shaped, distinctly curved at about basal third and slightly curved at apical third, outer margin strongly vaulted, evenly slightly enlarged in apical two thirds, at apex 1.1–1.2× as wide as club. Funicle 7-segmented, segments 2–7 quite compact; segment 1 1.6–1.7× as long as wide and 1.6–1.8× as long as segment 2, this 1.6–1.7× as long as wide; segments 3–5 1.1–1.2× as wide as long; segment 6 1.3–1.4 as wide as long; segment 7 1.5–1.6× as wide as long; club 1.8–2.0× as long as wide.

Pronotum short and wide, 2.61–2.86× as wide as long, behind anterior margin distinctly constricted, with moderately expanded lateral lobes; lobes laterally rounded with anterior margin straight and posterior margin rounded, evenly tapering posteriad; base regularly rounded along entire width. Pronotum on disc regularly domed; in lateral view slightly convex, behind anterior margin flat.

Elytra long oval, 1.19–1.24× as long as wide, with regularly rounded humeral calli and subparallel sides, apically broadly rounded; in lateral view slightly vaulted; base slightly arched. Interstriae wide and flat; striae narrow, finely punctuate.

Protibiae 5.1–5.3× as long as wide, apically regularly rounded, distinctly widened laterally, armed with 4–5 stout, yellow, equally sized short spines, first lateral spine much smaller. Tarsi with segment 2 1.1–1.2× as wide as long; segment 3 1.4–1.5× as wide as long and 1.5× as wide as segment 2; onychium long, 1.8–2.0 as long as segment 3.

Ventrites slender, length/width ratio at base of ventrite 1 1.30, ventrite 1 with sides not broadened, margin moderately convex medially, distinctly shorter than 2–5 together, ratio length/length of 2–5 0.75; ventrite 5 1.8× as wide as long.

Penis short and moderately slender, widest in basal portion, evenly tapering apicad with slightly rounded sides, apically narrowly rounded without separated tip.

Female terminalia not examined.

Biology. The type specimens were collected with ground traps.

Origin of the name. Yusra Mardini (born 1998) is a former Syrian competition swimmer and refugee of the Syrian civil war. She also competed in the 2020 Summer Olympics in Tokyo, held in 2021, with the Refugee Olympic Team (EOR). In August 2015, while escaping by boat from the war, the motor stopped working and the dinghy began to take on water. Yusra and her sister Sarah jumped into the water and pushed and pulled the boat for over 3 h at night, saving all the people from drowning. She was named one of the 100 most influential people in the world by Time magazine in 2023, alongside her sister, Sarah.

Differential remarks. See the differential remarks of *Nama ginobartalii*.

Nama goegapensis Meregalli & Borovec sp. n.*Nama* sp. 239 in Meregalli et al., 2021 [2].

Figure 7 (Morphology); Figure 17c,p (Terminalia)

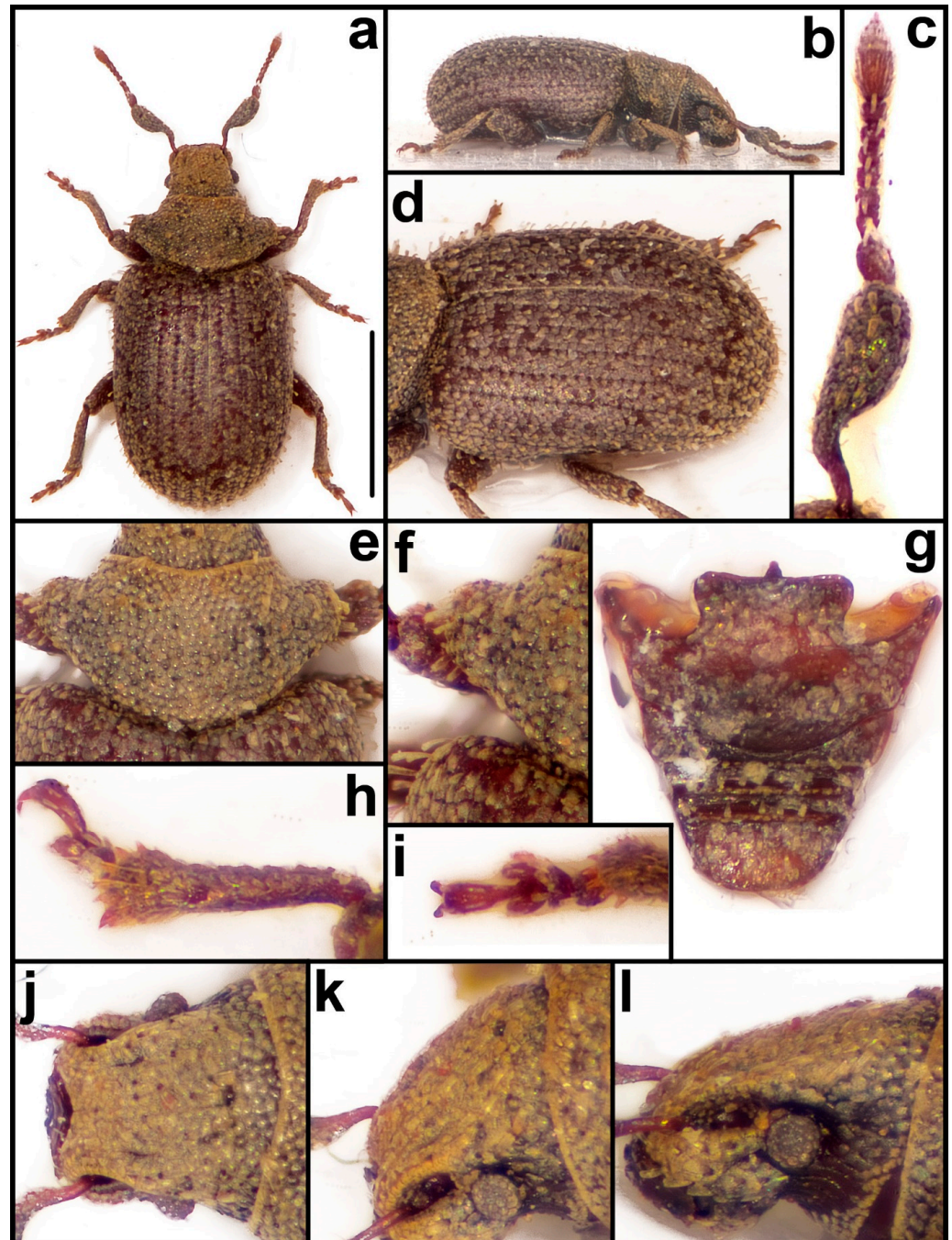


Figure 7. *Nama goegapensis* sp. n. Habitus photographs, dorsal view (a), lateral view (b); antenna (c); elytra, dorso-lateral view (d); pronotum, dorsal view (e), detail of sides (f); ventrites (g); protibia (h); protarsus (i); rostrum, dorsal view (j), dorso-lateral view (k), lateral view (l). Bar: 1 mm.

Zoobank registration: urn:lsid:zoobank.org:act:74D46E44-00D5-4181-9CF6-5F436251BED2

Type material. Holotype: ♂, ZA North. Cape, Goegap/Park—Kraaifontein/29°37.711' S, 18°02.561' E/1059m, 18.ix.20 12 Meregalli (TMSA). **Paratypes:** 2 ♂, 1 fragment, same data as the holotype (MMTI, RBSC)

Description. Body length 2.31–2.56 mm, holotype 2.38 mm. Elytra with irregularly rounded appressed scales, slightly imbricated, 3–4 across each interstria; pronotum and head with rostrum with smaller, regularly distributed, reciprocally isolated appressed scales. Each interstria with one regular row of semi-erect, short, subspatulate setae; setae apically truncate, as long as 1/3 of interstria width, distance between two setae 3× one seta length. Setae on pronotum and head with rostrum short, inconspicuous; setae on lobes of pronotum and humeri longer, erect, at least 4× as long as wide. Ventrites with dense irregular scales, similar to those on elytra, and sparse spatulate setae, aligned in one transverse row on ventrites 3 and 4. Vestiture uniformly light brown with distinct varnished sheen.

Rostrum 1.71–1.75× as wide as long, with distinctly rounded sides; epifrons wide and flat, distinctly tapering apicad, with concave sides, at base 1.23–1.27× as wide as at apex, dorsally with two longitudinal narrow striae, not always clearly distinct. Antennal scrobes in dorsal view visible only in apical half as narrow furrows. Eyes distinctly vaulted, asymmetrical, conspicuously prominent from outline of head; in lateral view placed at middle of head thickness. Vertex wide, regularly domed, in some specimens with short longitudinal median stria; head distinctly widened posteriad.

Antennae short and robust; scape 3.5–3.6× as long as wide at apex, at basal third slender, distinctly S-shaped, in apical two thirds sharply enlarged, inner margin straight, outer margin curved, at apex 1.6–1.7× as wide as club. Funicle 7-segmented; segment 1 1.7–1.8× as long as wide and 1.5–1.6× as long as segment 2, this 1.5–1.6× as long as wide; segments 3–6 1.1–1.2× as wide as long; segment 7 1.3× as wide as long; club 1.8–1.9× as long as wide.

Pronotum short and wide, 1.94–1.98× as wide as long, behind anterior margin conspicuously constricted, base conspicuously arched, lateral lobes strongly expanded, distinctly prominent, with anterior margin concave and posterior margin rounded, slightly concave towards base. Pronotum regularly domed on disc; in lateral view flat.

Elytra long oval, 1.29–1.34× as long as wide, with almost subparallel sides, apically broadly rounded; in lateral view vaulted; base arched. Interstriae wide and flat; striae very narrow, densely punctate.

Protibiae rather slender, 5.5–5.8× as long as wide, apically rounded and slightly widened laterally, armed with 5–6 yellow, short, stout spines and light brown mucro. Tarsi with segment 2 1.3–1.4× as wide as long; segment 3 1.2–1.3× as wide as long and 1.2–1.3× as wide as segment 2; onychium 1.5–1.6× as long as segment 3.

Ventrites broadened, short, length/width ratio 0.93, margin of ventrite 1 strongly convex, at midwidth 1.3× as long as ventrites 2–5 together; ventrite 5 very short, 2.4× as wide as long.

Penis subparallel-sided; apex broadly rounded.

Female sternite VIII with plate umbrella-shaped, more than twice as wide as long, with apodeme terminating inside plate, Y-shaped. Spermatheca with cornu slender, slightly curved; corpus elongate; ramus robust, as long as wide, rounded; collum slightly narrower and distinctly longer than ramus, straight, more than twice as long as wide, slightly tapering apicad.

Biology. The type specimens were sifted below a Chenopodiaceae shrub.

Origin of the name. From the type locality, Goegap Natural Park.

Differential remarks. The new species is similar to *N. semilunata* (Figure 8), which mainly differs in the peculiar shape of the pronotum, extremely short and broad, semicircular, more than 3× as wide as long and with very long lateral setae.

Nama semilunata Meregalli & Borovec sp. n.

Nama sp. 2, in Meregalli et al., 2021 [2].

Figure 8 (Morphology); Figure 171 (Terminalia)

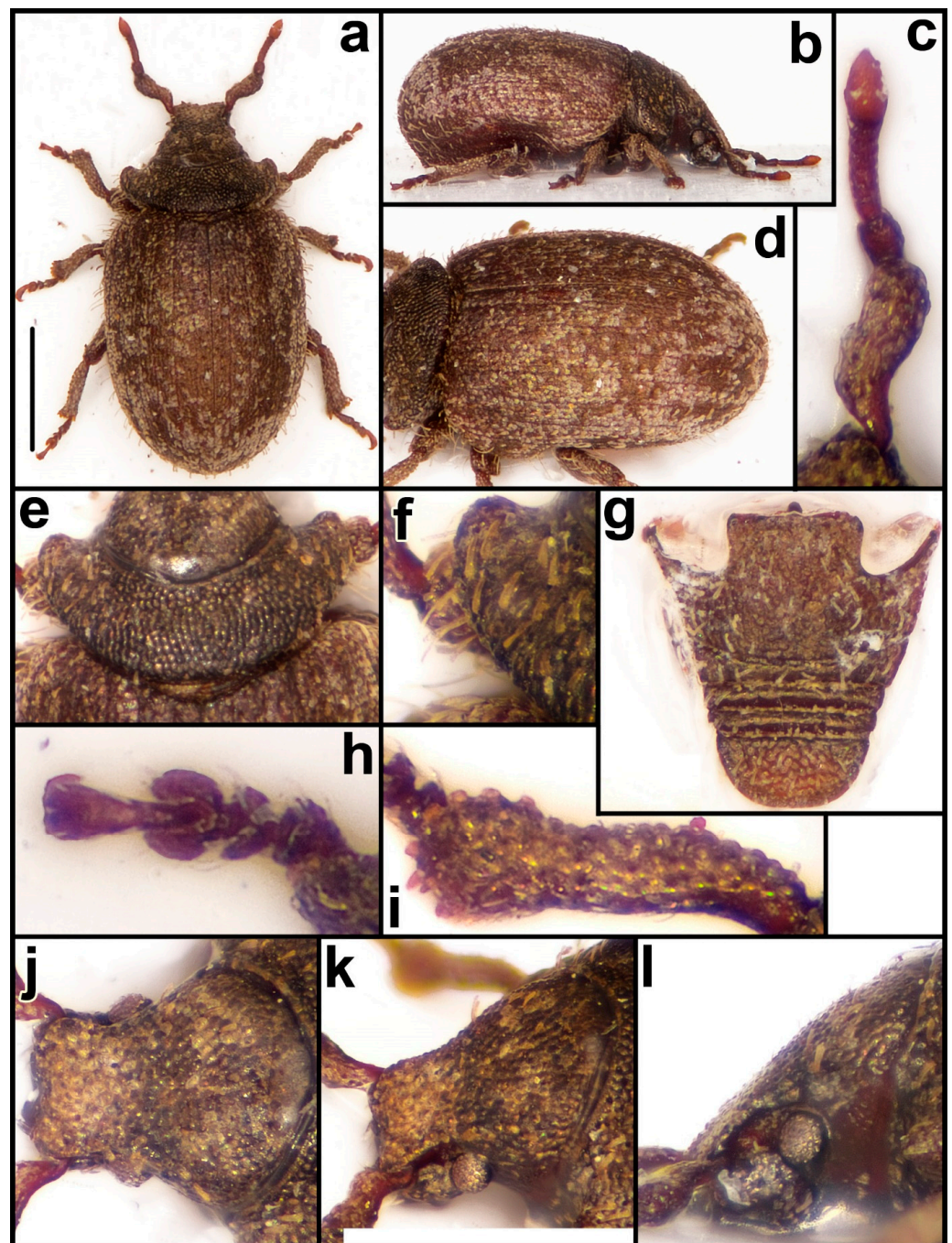


Figure 8. *Nama semilunata* sp. n. Habitus photographs, dorsal view (a), lateral view (b); antenna (c); elytra, dorso-lateral view (d); pronotum, dorsal view (e), detail of sides (f); ventrites (g); protibia (i); protarsus (h); rostrum, dorsal view (j), dorso-lateral view (k), lateral view (l). Bar: 1 mm.

Zoobank registration: urn:lsid:zoobank.org:act:3CFB04E7-F755-4BC5-9FC2-C5770C46A7B6

Type material. Holotype: ♀, S. Afr., Namaq. [= Namaqualand] coast/Gemsbok Vlakte frm./30.30 S–17.29 E [= 30°30′ S 17°29′ E]//1.9.1977; E-Y: 1366//groundtraps, 56 days/leg. Endrödy-Younga//groundtrap/with meat bait (TMSA).

Description. Body length 2.81 mm. Elytra with irregularly rounded or subtriangular, slightly imbricated appressed scales, 3–4 across each interstria on dorsum, up to 6 on interstriae 4 to 6; pronotum and head with rostrum with smaller, regularly rounded isolated appressed scales. Each interstria with one row of semi-erect setae; setae subspatulate,

apically rounded, on disc shorter, on lateral interstriae longer than half of interstria width, distance between two setae $2\times$ one seta length. Pronotum and head with rostrum with similar setae as on elytra, irregularly densely scattered; lateral setae on pronotal lobes and first half of interval 7 very long, up to $8\times$ as long as wide. Ventrites with isolated round scales, distantly inserted on ventrite 5, and elongate suberect setae, sparsely distributed.

Rostrum $1.88\times$ as wide as long, subparallel-sided with slightly rounded sides; epifrons very wide, occupying most of rostral width in dorsal view, with strongly concave sides, at base $1.08\times$ as wide as at apex, dorsally slightly depressed at middle. Antennal scrobes in dorsal view invisible. Eyes distinctly vaulted, conspicuously prominent from outline of head; in lateral view placed at middle of head thickness. Vertex very wide and distinctly domed, lacking any fovea or stria; head distinctly widened posteriad.

Antennae short and robust; scape $2.8\times$ as long as wide at apex, at basal quarter broad, distinctly S-shaped, in apical three quarters extremely thickened, straight, inner side linear, outer side distinctly convex, almost of equal width along entire straight part, at apex as wide as protibia at midlength and $1.4\times$ as wide as club. Funicle 7-segmented, segments 2–7 very compact; segment 1 robust, $1.3\times$ as long as wide, $2\times$ as long and $1.8\times$ as wide as segment 2, this $1.1\times$ as long as wide; segments 3–6 twice as wide as long; segment 7 $2.2\times$ as wide as long; club $1.8\times$ as long as wide.

Pronotum very short and wide, $3.23\times$ as wide as long, narrowly arched along entire width, anterior margin at midwidth much behind line joining apices of lateral lobes, lobes strongly expanded laterally, prominent anteriorly, posterior margin rounded; base regularly distinctly arched along entire width. Pronotum on disc weakly regularly domed; in lateral view flat.

Elytra oval, $1.25\times$ as long as wide, with slightly rounded sides, apically broadly rounded; in lateral view vaulted; base arched. Interstriae wide and flat; striae very narrow.

Protibiae $4.1\times$ as long as wide; apically regularly rounded, laterally slightly widened, armed around entire apex by 8–9 yellow, stout, short spines, mucro very short. Tarsi with segment 2 $1.4\times$ as wide as long; segment 3 $1.3\times$ as wide as long and $1.3\times$ as wide as segment 2; onychium $1.4\times$ as long as segment 3.

Ventrites broadened, as long as wide, margin of ventrite 1 broadly and regularly convex at apex, at midwidth as long as ventrites 2–5 together; ventrite 5 short, $2.2\times$ as wide as long.

Sternite VIII with plate umbrella-shaped, as wide as long, apodeme terminating at basal margin. Spermatheca with short, regularly curved cornu; ramus straight, robust, slightly longer than wide and longer than collum, subtrapezoidal; collum slightly wider than long, rounded.

Biology. The type specimen was collected with a ground trap.

Origin of the name. The specific epithet was suggested by the peculiar shape of the pronotum, similar to a crescent moon.

Differential remarks. *Nama semilunata* differs from all the known species of *Nama* for the peculiar shape of the pronotum.

***Nama martiana* Meregalli & Borovec sp. n.**

Nama sp. 237 in Meregalli et al., 2021 [2].

Nama sp. 238 in Meregalli et al., 2021 [2].

Figure 9 (Morphology); Figure 17e (Terminalia)

Zoobank registration: urn:lsid:zoobank.org:act:50E988A3-DCB9-4E5B-921E-BDD108CF0749

Type material. **Holotype:** ♀, ZA—N [Northern] Cape, Aggeneys/Gamsberg, 1116 m/29°15.591' S, 18°57.705' E/17.IX.2012 Meregalli leg. (TMSA). **Paratype:** 1 ♂, ZA—N Cape, Aggeneys/Gamsberg base, 890 m/29°15.073' S 18°55.201' E/17.IX.2012, Meregalli leg. (MMTI). The paratype is incomplete, lacking all legs and funicles with clubs.

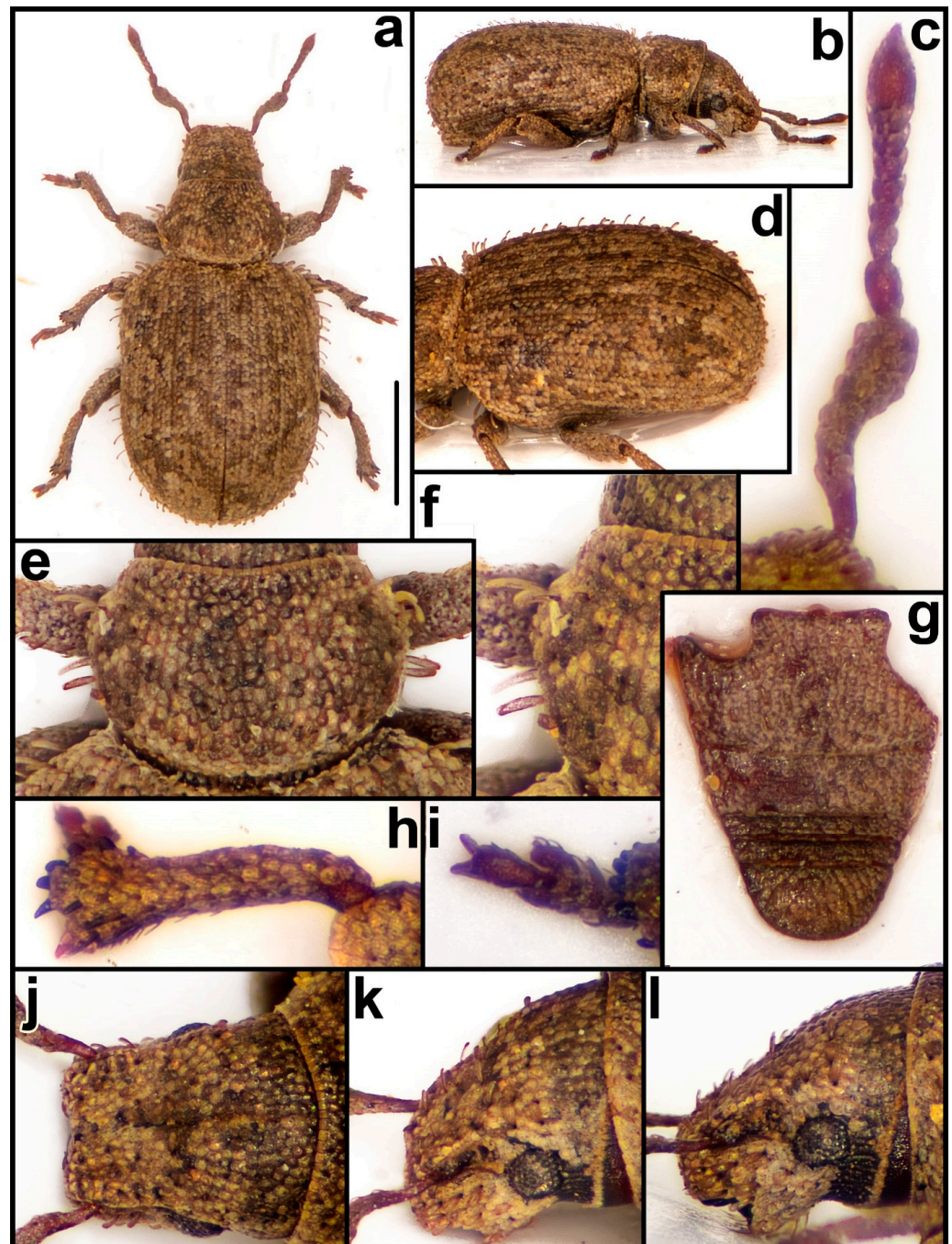


Figure 9. *Nama martiana* sp. n. Habitus photographs, dorsal view (a), lateral view (b); antenna (c); elytra, dorso-lateral view (d); pronotum, dorsal view (e), detail of sides (f); ventrites (g); protibia (h); protarsus (i); rostrum, dorsal view (j), dorso-lateral view (k), lateral view (l). Bar: 1 mm.

Description. Body length: holotype 2.84 mm, paratype 2.69 mm. Body densely covered with rounded, finely striate appressed scales, 3–4 across each interstria, on elytra slightly imbricated, on pronotum and head with rostrum reciprocally isolated. Interstriae with erect, subspatulate setae, apically rounded, slightly shorter than half width of interstria, slightly longer on interstria 7; distance between two setae $3\times$ one seta length; setae on pronotum identical, on head and rostrum slightly shorter; erect lateral setae of pronotum slender, lanceolate, $4\times$ as long as wide.

Rostrum $1.78\text{--}1.83\times$ as wide as long, subparallel-sided, with straight sides; epifrons wide, at base almost as wide as rostrum, slightly tapering anteriad, with straight sides, at

base 1.11–1.14× as wide as at apex, dorsally flat, with distinct median longitudinal furrow reaching anterior margin of pronotum and hardly visible lateral striae. Antennal scrobes invisible in dorsal view. Eyes medium sized, faintly vaulted and faintly prominent from outline of head; in lateral view placed at middle of head. Vertex wide, regularly domed; head slightly evenly enlarged posteriad.

Antennae short; scape 4.2–4.3× as long as wide, curved at basal third, then evenly enlarged apicad, inner margin almost straight, outer side convex, at apex 1.3× as wide as club. Funicle segment 1 conical, 1.6× as long as wide and 1.4× as long as segment 2, this 1.5× as long as wide; segments 3–5 1.3× as wide as long; segment 6 1.5× as wide as long; segment 7 1.7× as wide as long; club 1.8× as long as wide.

Pronotum 1.58–1.63× as wide as long, widest at midlength with rounded sides, behind anterior margin constricted; lateral lobes not developed; disc regularly domed; base slightly arched; pronotum in lateral view vaulted.

Elytra long oval, 1.28–1.32× as long as wide, subparallel-sided, apically broadly rounded; base arched. Striae narrow, finely punctate; interstriae wide, flat. Elytra in lateral view flat.

Protibiae robust, 5.1× as long as wide at midlength, broadened apicad, apically rounded, with 6 dark brown spines, 5 outer spines short, stout, most lateral spine finer, inner spine longer, pointed, hook-shaped, and 4 supplementary subapical spines short; mucro light brown. Tarsi with segment 2 1.2× as wide as long; segment 3 1.2× as wide as long and 1.2× as wide as segment 2; onychium short, 1.3 × as long as segment 3.

Ventrites moderately broadened basad, length/width ratio 1.18, ventrite 1 very weakly curved at margin, much shorter than 2–5 together, ventrite 2 as long as 3 + 4 together, ventrite 5 2× as wide as long.

Penis very short with slightly rounded sides, slightly constricted at midlength, enlarged apicad, apically broadly rounded.

Sternite VIII in females with plate umbrella-shaped, slightly wider than long, apodeme terminating inside plate, Y-shaped. Spermatheca not examined.

Biology. The type specimen was collected by sifting small grasses in a rocky crevice; the paratype was found dead under a stone.

Origin of the name. The bare sandy and rocky, sometimes reddish, desert where this species was found bears some resemblance to some of Mars landscapes, hence the name assigned to it.

Differential remarks. *Nama smithi* (Figure 10), *N. kostali* (Figure 11) and *N. startorum* (Figure 4) have flat or even slightly concave margin of the ventrite 1, which resembles the feebly curved margin of the ventrite 1 of *N. martiana*. All these species have long ventrite 2. *Nama startorum* differs in the elytra covered with dense erect setae. The two other species differ for the pronotum with scales not reciprocally isolated and the lateral setae shortly spatulate; in addition, *N. smithi* has finely digitate scales on the sides of the pronotum; protibia with raised curved setae, absent in *N. martiana*, and long sharp spines; its penis is acutely pointed. *N. kostali* has protibia with apical lobes with a large number of setae around the lobes and in subapical position.

***Nama smithi* Meregalli & Borovec sp. n.**

Nama sp. 506; *Nama* sp. 519, in Meregalli et al., 2021 [2].

Figure 10 (Morphology); Figure 17g,r (Terminalia)

Zoobank registration: urn:lsid:zoobank.org:act:C97E5A84-1258-4FB8-BEDE-2807243 CCD54

Type material. Holotype: ♂, RSA, Northern Cape, Tswalu Kalahari Reserve, Pass South, 27°19.739' S, 22°31.502' E, 1302 m, 30.x.2018, R. Borovec & M. Meregalli lgt. (TMSA).

Paratypes: 21 spec., same data as the holotype (BMNH, CMNC, MMTI, RBSC); 1 ♀, RSA, Northern Cape, Olifantshoek, Langkloof, 27°54.138' S '22°39.598' E, 1473 m, 4.xi.2018, R. Borovec lgt. (RBSC).

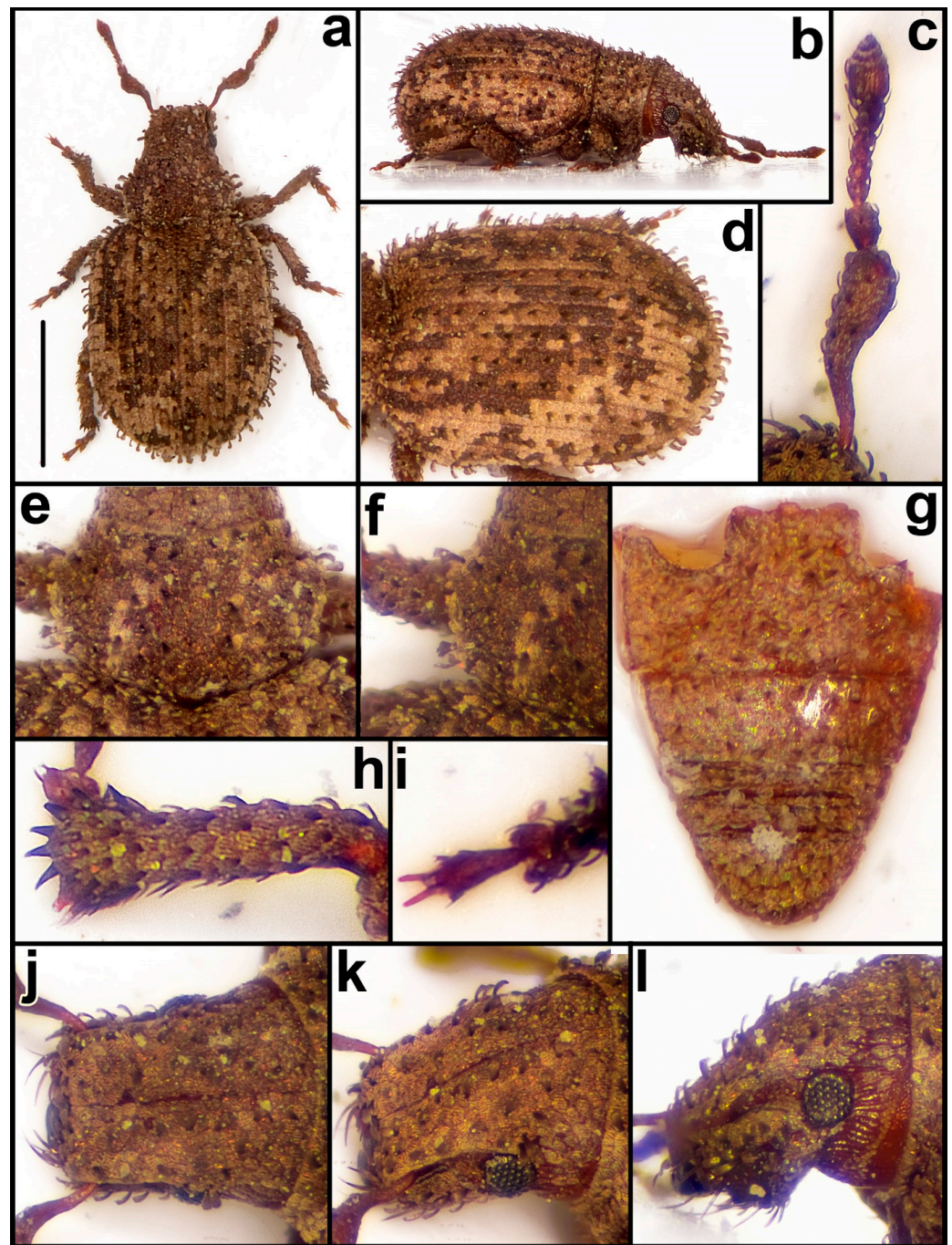


Figure 10. *Nama smithi* sp. n. Body, dorsum (a), profile (b); antenna (c); elytra, dorso-lateral view (d); pronotum, dorsum (e), detail of sides (f); ventrites (g); protibia (h); protarsus (i); rostrum, dorsum (j), dorso-lateral view (k), profile (l). Bar: 1 mm.

Description. Body length 1.97–2.51 mm, holotype 2.34 mm. Body covered with rounded, finely striate, slightly imbricated appressed scales, 3–4 across each interstria, on pronotum and head with rostrum scales slightly smaller; sides of pronotum with finely digitate scales. Each interstria with one row of semi-erect, subspatulate, regularly inserted setae, apically rounded, as long as half one interstria width, distance between two setae 2–3× one seta length; setae on pronotum and head with rostrum half as long as elytral ones, densely and irregularly scattered; lateral prominent setae on pronotum narrow at base and broadly spatulate on apical half. Ventrites with dense imbricate yellowish scales and very

few short setae. Vestiture variegated, on elytra mainly dark brown on dorsum and lighter on sides and declivity, on pronotum dark brown, with some ill-defined lighter stripes.

Rostrum 1.79–1.88× as wide as long, subparallel-sided, with straight sides; epifrons almost subequal in width as rostrum, subparallel-sided, with straight sides, at base 1.04–1.08× as wide as at apex, dorsally flat, with distinct longitudinal median stria along entire length, reaching anterior pronotal margin, and two indistinct, short, lateral longitudinal striae. Antennal scrobes invisible in dorsal view. Eyes small, weakly vaulted and weakly prominent from outline of head; in lateral view placed at middle of head. Vertex wide, regularly weakly domed; head slightly enlarged posteriad.

Antennae short; scape 3.7–3.9× as long as wide, curved at middle, in apical half distinctly evenly thickened, at apex 1.3–1.4× as wide as club. Funicle segment 1 long, conical, 1.7–1.8× as long as wide and 1.8–2.0× as long as segment 2, this 1.3–1.4× as long as wide; segments 3–5 1.2–1.3× as wide as long; segment 6 1.5–1.6× as wide as long; segment 7 1.7–1.8× as wide as long; club 1.7–1.8× as long as wide.

Pronotum 1.65–1.72× as wide as long, widest before midlength, here subangular, evenly tapering posteriad and constricted behind anterior margin; lateral lobes not developed; disc regularly domed; base slightly arched; pronotum in lateral view vaulted, behind anterior margin flat.

Elytra oval, 1.23–1.28× as long as wide, subparallel-sided, apically broadly rounded, base slightly arched. Striae narrow, finely punctuate; interstriae flat. Elytra in lateral view almost flat.

Protibiae robust, 4.6–4.8× as long as wide at middle, apically broadly rounded, with 6 stout blackish spines, evenly spaced, mucro short, light brown. Tarsi with segment 2 1.1–1.2× as wide as long; segment 3 1.3–1.4× as wide as long and 1.3–1.4× as wide as segment 2; onychium long, 1.7–1.8× as long as segment 3.

Ventrites scarcely broadened basally, length/width ratio 1.18; sides of ventrite 1 almost subparallel, margin perfectly straight, at midlength 0.65× as long as 2–5 together, ventrite 2 longer than 3–4 together, ventrite 5 half as long as wide.

Penis subparallel-sided in basal half, at apical portion tapering apicad with slightly rounded sides, tip narrowly rounded.

Female sternite VIII with large plate, slightly wider than long, apodeme terminating inside plate, here slightly Y-shaped. Spermatheca with cornu short and almost straight; ramus tube-shaped, straight, longer than wide; collum long and slender, 4–5× as long as wide, evenly tapering apicad, tip slightly curved to opposite side of cornu.

Biology. The type material was sifted from litter under shrubs of *Euclea undulata*, in a rocky outcrop in a savanna habitat.

Origin of the name. This species is named after Dylan Smith, the manager of the Tswalu Reserve, who was very friendly and helpful during our visit.

Differential remarks. *Nama smithi* shares the shape of the ventrites with *N. kostali* (Figure 11), *N. startorum* (Figure 4) and in part with *N. martiana* (Figure 9). The former differs by the distantly inserted semi-appressed elytral setae sparse; the protibiae apically lobed, with a large number of spines variously placed in the apical part; the ventrite 1 with margin slightly sinuate at middle; the ventrite 5 with numerous dark brown setae; the plate of the female sternite VIII umbrella-shaped; wider than long and with apodeme simple. See *N. startorum* and *N. martiana* for the differences from those species.

***Nama kostali* Meregalli & Borovec sp. n.**

Figure 11 (Morphology); Figure 17i,q (Terminalia)

Zoobank registration: urn:lsid:zoobank.org:act:AFDB007C-A629-4548-8E77-962CC95EE36C

Type material. Holotype: ♂, South Africa/Northern Cape bor. or./Michael Košťál leg.//Danielskuil env./pr. Postmasburg 1480 m/28°15.5' S, 23°34.8' E/14.xi.2022 (TMSA). **Paratypes:** 5 ♂♂1 ♀, same data as the holotype (MKŠS, MMTI, RBSC).

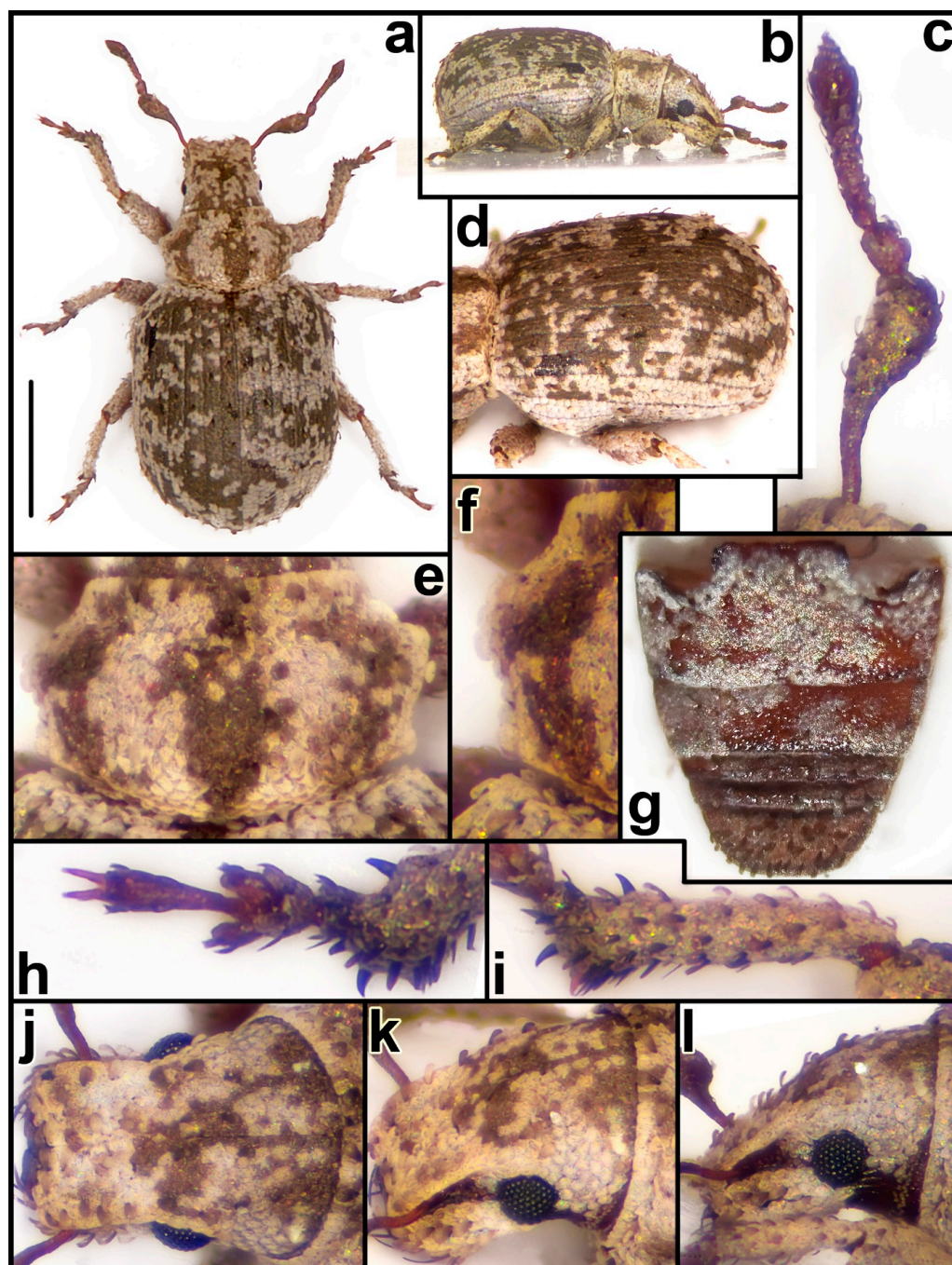


Figure 11. *Nama kostali* sp. n. Body, dorsum (a), profile (b); antenna (c); elytra, dorso-lateral view (d); pronotum, dorsum (e), detail of sides (f); ventrites (g); protibia (i); protarsus (h); rostrum, dorsum (j), dorso-lateral view (k), profile (l). Bar: 1 mm.

Description. Body length: holotype 2.47 mm, paratypes 2.19–2.66 mm. Elytra and pronotum covered with rounded, finely striate, moderately large, slightly imbricated appressed scales, 3–4 across each interstria, on head with rostrum distinctly smaller; scales on dorso-lateral parts of pronotum distinctly long digitate. Each elytral interstria with short, distantly spaced, on disc semi-appressed, on posterior declivity semi-erect, spatulate setae, apically rounded, distinctly shorter than half interstria width, distance between two setae more than $5\times$ one seta length; setae on pronotum and head with rostrum slightly shorter than elytral ones, irregularly scattered; lateral setae on pronotum 5–6, short, wider than long, broadly spatulate. Ventrites with dense round imbricate translucent scales; ventrite 5 with

dense dark brown spatulate setae. Body vestiture maculate, light grey with feeble pearly sheen spots and contrasting large dark brownish spots on interstriae 1 to 6, lateral interstriae almost completely light-scaled; pronotum with three brown wide longitudinal stripes.

Rostrum 1.53–1.58× as wide as long, subparallel-sided with straight sides; epifrons very wide, occupying majority of rostral width, subparallel-sided with straight sides, subequal in width at base and at apex, dorsally flat with distinct narrow longitudinal median stria along entire length, reaching anterior margin of pronotum, and two indistinct, short, shallow, lateral longitudinal striae with ill-defined margins. Antennal scrobes invisible in dorsal view. Eyes small, slightly vaulted and prominent from outline of head; in lateral view placed at middle of head. Vertex wide, slightly domed; head regularly enlarged posteriorly.

Antennae short; scape 3.4–3.7× as long as wide, slightly curved at base and distinctly curved at middle, in basal half very slender, in apical half abruptly enlarged, at apex 1.4–1.5× as wide as club. Funicle segments short and compact, segment 1 large and conical, 1.5–1.6× as long as wide and 1.9–2.0× as long as short segment 2, this 1.2–1.3× as long as wide; segments 3–7 progressively shorter and wider towards club; segment 3 1.2× as wide as long; segment 4 1.3× as wide as long; segment 5 1.4× as wide as long; segment 6 1.6–1.7× as wide as long; segment 7 1.8–1.9× as wide as long, almost as wide as basal part of club; club 1.7–1.8× as long as wide.

Pronotum 1.56–1.61× as wide as long, widest at midlength, with distinctly rounded sides, distinctly constricted shortly behind anterior margin; lateral lobes not regularly expanded, only present as small subangular prominences before midlength; disc regularly domed; base arched; pronotum in lateral view distinctly vaulted, flat behind anterior margin.

Elytra oval, 1.19–1.23× as long as wide, with sides almost straight, apically broadly rounded, base arched. Striae narrow, linear; interstriae flat. Elytra in lateral view almost flat.

Protibiae robust, 5.4–5.6× as long as wide at middle, apically *Trachyphloeus*-like lobed, with middle lobe armed with two large, apically rounded spines, outer and inner lobe with one smaller, pointed spine and one further spine at inner indentation. Two fine and small, hardly visible spines present above inner indentation. Outer indentation slightly longer and deeper than inner one. Spines, lobes and indentations finer and smaller in males than in females. Spines black, mucro brown. Tarsi with segment 2 1.2–1.3× as wide as long; segment 3 1.3–1.4× as wide as long and 1.3–1.4× as wide as segment 2; onychium long, 1.7–1.8× as long as segment 3.

Ventrites moderately broadened basad, length/width ratio 1.05, sides not continuously curved from 1 to 5; ventrite 1 subsinuate medially at margin, 0.70× as long as 2–5 together; ventrite 2 as long as 3 + 4, ventrite 5 very short, 2.2× as wide as long.

Female sternite VIII with plate small, very short, conspicuously wider than long, with deep narrow concavity at middle of anterior margin. Spermatheca U-shaped, with long and almost straight cornu; corpus rounded; ramus small, slightly wider than long, rounded; collum very long, 5× as long as wide at base, slightly tapered apicad, curved along entire length and distinctly curved outside at short tip.

Penis short, in basal half subparallel sided, in apical portion evenly tapered apicad with convex sides. Endophallus with two short and slender sclerites, one distinctly curved.

Biology. This species was swept from the low perennial vegetation in a plain terrain with sandy soil, and subsequently sifted under cushion-like perennials in places where specimens were swept.

Origin of the name. This species is named after its collector, our good friend Michael Košťál.

Differential remarks. The peculiar shape of the apex of the protibia and the distribution of apical and subapical spines are typical of this species.

Nama seriehispida Meregalli & Borovec sp. n.

Nama sp. 460, in Meregalli et al., 2021 [2].

Figure 12 (Morphology); Figure 17n (Terminalia)

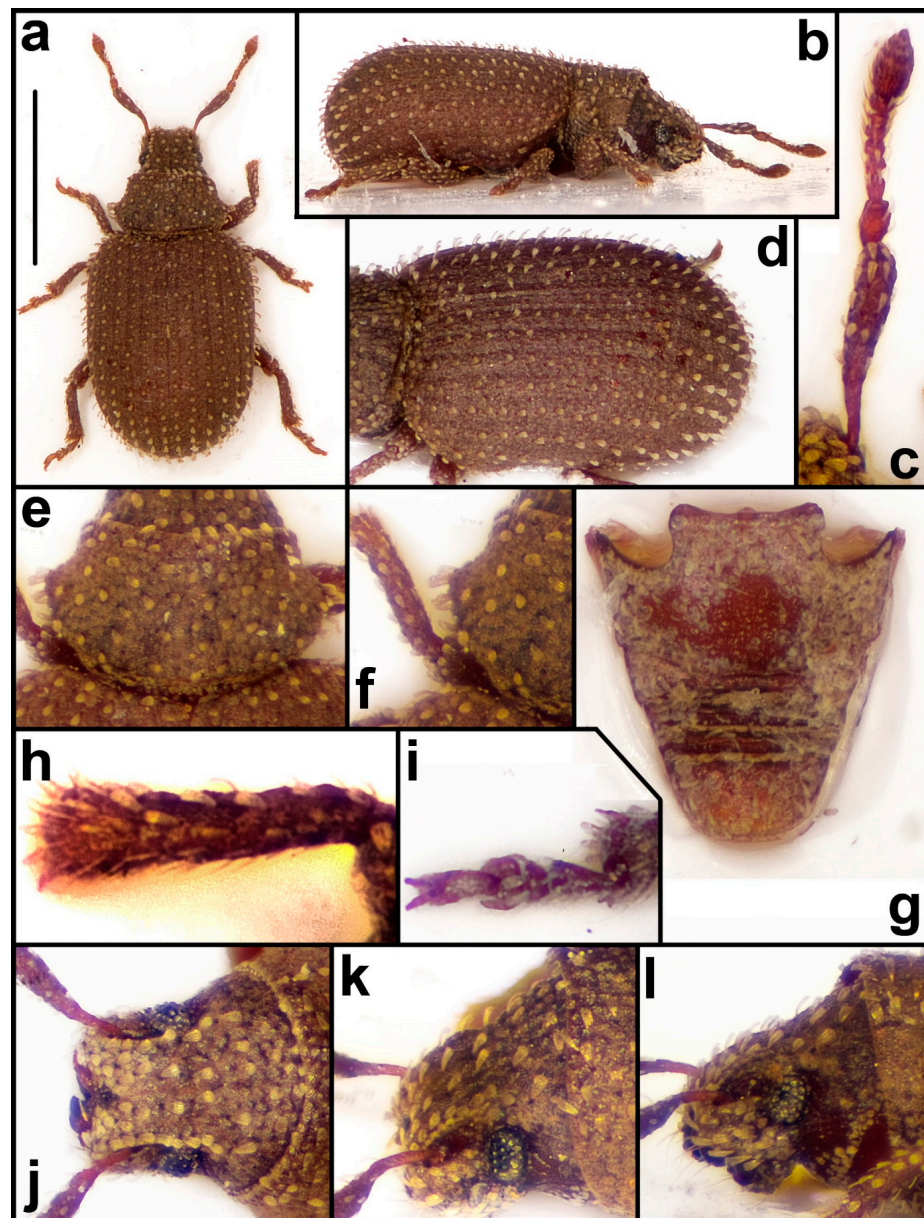


Figure 12. *Nama seriehispidata* sp. n. Habitus photographs, dorsal view (a), lateral view (b); antenna (c); elytra, dorso-lateral view (d); pronotum, dorsal view (e), detail of sides (f); ventrites (g); protibia (h); protarsus (i); rostrum, dorsal view (j), dorso-lateral view (k), lateral view (l). Bar: 1 mm.

Zoobank registration: urn:lsid:zoobank.org:act:C759BB89-25C5-4BC7-B60D-ED8B39CF4917

Type material. Holotype: ♀, RSA Western Cape/R 358 NE Bitterfontein/21.xi.2016 397 m/30°53.921' S, 18°19.809' E//Sifting of detritus, dead/leaves and branches/below shrubby *Euphorbia* sp./R. Borovec & M. Meregalli lgt (TMSA). **Paratype:** same data as the holotype, 1♀, 1 fragment (♀RBSC, fragment MMTI)

Description. Body length: holotype 1.81 mm, paratype 1.75 mm. Body densely covered with rounded appressed scales with short and fine fringes on circumference, 3–4 across each interstria. Interstriae with one row of semi-erect, subspatulate, dense and equally spaced setae; setae apically rounded, slightly shorter on disc than on apical declivity, on disc shorter than half the width of one interstria; distance between two setae 2× one seta length. Semi-erect setae on pronotum and head with rostrum identical to those on elytra, densely irregularly scattered; lateral setae on pronotum 4–5, inserted behind

point of maximum width, erect, straight, spatulate, $2.5\text{--}3\times$ as long as wide. Ventrites with dense coating of scales similar to those on elytra and sparse narrow suberect setae. Dorsal vestiture light brown, matt.

Rostrum $2.08\text{--}2.13\times$ as wide as long, slightly evenly tapering anteriorly with straight sides; epifrons narrow, at base distinctly narrower than base of rostrum, slightly tapering anteriorly, with concave sides, at base $1.06\text{--}1.08\times$ as wide as at apex, dorsally flat, with narrow median longitudinal stria reaching dorsal margin of pronotum and two short longitudinal striae in lateral parts. Antennal scrobes in dorsal view visible as narrow furrows in apical part. Eyes small, distinctly vaulted, scarcely prominent from outline of head in dorsal view; in lateral view placed at middle of head thickness. Vertex wide, regularly domed; head distinctly enlarged posteriorly.

Antennae slender; scape narrow, slightly curved at basal third, then elongate subtriangular, evenly enlarged apically, straight, at apex as wide as club. Funicle 7-segmented; segment 1 largest, conical, $1.5\text{--}1.6\times$ as long as wide and $1.8\text{--}2.0\times$ as long as segment 2, this $1.2\text{--}1.3\times$ as long as wide; segments 3–5 $1.1\text{--}1.2\times$ as wide as long; segment 6 $1.2\text{--}1.3\times$ as wide as long; segment 7 $1.4\text{--}1.5\times$ as wide as long; club $1.6\text{--}1.8\times$ as long as wide.

Pronotum $1.73\text{--}1.77\times$ as wide as long, in anterior third distinctly constricted behind anterior margin, then conspicuously widened, angulate at point of maximum width, rounded towards base; disc regularly domed; base rounded. Pronotum in lateral view flat.

Elytra long oval, $1.27\text{--}1.30\times$ as long as wide, with distinctly rounded humeral calli, subparallel-sided, apically broadly rounded; in lateral view flat. Striae finely punctate; interstriae flat.

Protibiae $5.4\text{--}5.6\times$ as long as wide at midlength, slightly enlarged outwards in apical portion, apically rounded, armed with 6 yellow slender spines, inner spines thicker, lateral spine smaller and finer. Tarsi with segment 2 $1.3\text{--}1.4\times$ as wide as long; segment 3 $1.3\text{--}1.4\times$ as wide as long and $1.3\text{--}1.4$ as wide as segment 2; onychium $1.5\text{--}1.6\times$ as long as segment 3.

Ventrites regularly subtriangular, sides almost linear from base to ventrite 5, length/width ratio of ventrite 1 at base 1.10, margin of ventrite 1 not regularly convex, sublinearly prominent towards median part, here linear, at midwidth almost as long as ventrites 2–5; ventrite 5 relatively well developed, $1.9\times$ as wide as long.

Female sternite VIII with plate umbrella-shaped, slightly wider than long, apodeme terminating inside plate, here Y-shaped. Spermatheca with cornu slender, straight at middle; ramus slightly longer than wide, subtrapezoidal; collum slightly shorter and narrower, curved.

Biology. The type specimens were sifted from litter under *Euphorbia mauritanica*.

Origin of the name. The regular distribution of the elytral setae suggested the specific epithet.

Differential remarks. This species is easily distinguishable from all the other *Nama* species by its small body size, less than 2 mm long; the seriate elytral setae; and the short rostrum, more than twice as wide as long.

***Nama khalidae* Meregalli & Borovec sp. n.**

Nama sp. 461, Meregalli et al., 2021 [2].

Figure 13 (Morphology); Figure 17o (Terminalia)

Zoobank registration: urn:lsid:zoobank.org:act:C5D010D5-F2E5-49A7-AA78-F6C67D26A855

Type material. Holotype: ♀, RSA Western Cape/R 358 ca 15 km SW Kliprand/21.xi.2016 747 m/30°40.720' S, 18°41.385' E//sifting of detritus, dry/leaves and branches/below shrubby *Euphorbia*/R. Borovec, M. Meregalli lgt. (TMSA).

Description. Body length 3.56 mm. Body densely covered with regularly rounded, finely striate, reciprocally isolated appressed scales, 4–5 across each interstria. Interstriae with two irregular rows of short, subspatulate, apically rounded setae; setae shorter than half width of interstria; distance between two setae $2\times$ one seta length; pronotum and head with rostrum with similar, slightly shorter setae, lateral setae of pronotum 6–7, inserted on margin of lobes, straight, thick, $3\times$ as long as wide; ventrites with appressed setae, in part

small, round, glossy, particularly on ventrite 2, in part larger, matt, and sparse setae similar to those on dorsum.

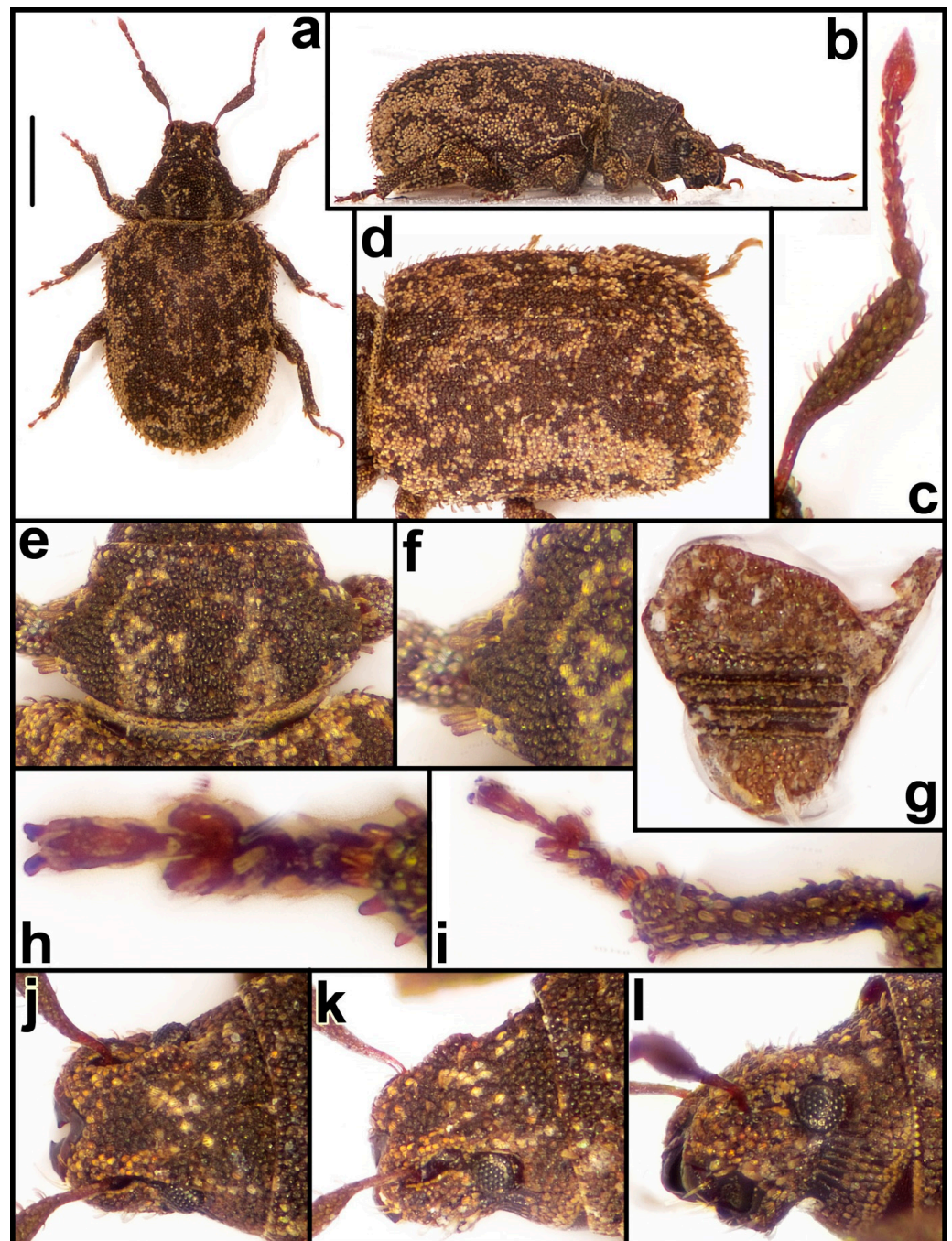


Figure 13. *Nama khalidae* sp. n. Habitus photographs, dorsal view (a), lateral view (b); antenna (c); elytra, dorso-lateral view (d); pronotum, dorsal view (e), detail of sides (f); ventrites (g); protibia (i); protarsus (h); rostrum, dorsal view (j), dorso-lateral view (k), lateral view (l). Bar: 1 mm..

Rostrum $1.91\times$ as wide as long, slightly tapering apicad, with slightly concave sides, in lateral view distinctly raised and separated from head, with a narrow acute raised elevation near head; epifrons narrow, slightly tapering apicad, with slightly concave sides, at base $1.2\times$ as wide as at apex; dorsally flat, with wide, U-shaped stria, opened apicad. Antennal sockets visible near apex. Eyes small, irregularly vaulted, weakly prominent from outline of head in dorsal view; in lateral view placed on upper half of head thickness, near dorsum. Vertex wide, flat, with slender median longitudinal stria; head distinctly enlarged posteriad.

Antennae slender; scape $7.1\times$ as long as wide at apex, in basal quarter weakly S-shaped, then elongate subtriangular, evenly enlarged apicad, at apex $1.4\times$ as wide as club. Funicle 7-segmented; segments 1 and 2 elongate, subequal in length, segment 1 $1.7\times$ as long as wide, thicker than 2, this $2.4\times$ as long as wide; segment 3 $1.4\times$ as long as wide; segment 4 $1.1\times$ as long as wide; segments 5 and 6 as long as wide; segment 7 $1.1\times$ as wide as long; club twice as long as wide.

Pronotum wide, $1.79\times$ as wide as long, behind anterior margin distinctly constricted, widest at basal third, lateral lobes moderately developed; disc regularly domed; in lateral view flat.

Elytra long oval, $1.32\times$ as long as wide, with subparallel sides, apically broadly rounded; in lateral view almost flat. Striae narrow; interstriae flat and wide.

Protibiae $6.1\times$ as long as wide at midlength, slightly curved, apically regularly rounded, widened outwards; armed with 6 stout yellow spines of subequal size, 3 outer spines positioned close together, 4th spine slightly shorter and spaced further apart, 2 inner spines distantly separated; mucro brown. Tarsi slender; segment 2 $1.2\times$ as wide as long; segment 3 $1.3\times$ as wide as long and $1.4\times$ as wide as segment 2; onychium $1.6\times$ as long as segment 3.

Ventrites broad, length/width ratio 0.90; ventrite 1 broadened in basal part, margin sublinear near sides, margin moderately convex in median part, at midwidth longer than 2–5 together, ventrite 5 almost $2\times$ as wide as long.

Female sternite VIII with plate small, as long as wide, with semicircular apical margin and enlarged basal margin; apodeme terminating inside plate, here Y-shaped. Spermatheca moderately large, cornu large, wide, slightly curved; corpus elongated; ramus and collum small, ramus isodiametric; collum much narrower, sharply pointed apicad.

Biology. The type specimen was sifted under *Euphorbia* sp.

Origin of the name: Khalida Popal (born 1987) is an Afghan football player and director. She is the Program and Event Director of the Afghanistan Women's National Football Team. After the Taliban regained power in Afghanistan in August–September 2021, she helped coordinate the evacuation of young female Afghan football players and their families, 135 persons in total, who eventually landed in the UK on November 18th 2021.

Differential remarks. *Nama khalidae* is very similar to *N. switzeriae* (Figure 14), which differs by the lobes of the pronotum almost not broadened; with small, short lateral setae, the interstriae with setae usually aligned in a single row; the epifrons narrower at the base, with ratio rostrum/epifrons width 1.6 (1.2 in *N. khalidae*); the spines at the apex of the protibia equally spaced.

Nama switzeriae Meregalli & Borovec sp. n.

Nama sp. 361, in Meregalli et al., 2021 [2]

Figure 14 (Morphology); Figure 17b (Terminalia)

Zoobank registration: urn:lsid:zoobank.org:act:A255E9E7-D198-497C-9DA0-64851B423155

Type material. Holotype: ♀, RSA Northern Cape/rd Gamoep–Kamieskroon/cca 10 km W Gamoep/24.ix.2013 950 m/29°58.938' S, 18°22.328' E//sifting of detritus, dead/leaves and branches/below shrubby *Euphorbia*/(TMSA).

Description. Body length 2.98 mm. Body densely covered with regularly rounded, finely striate, isolated appressed scales, 4–5 across each interstria. Interstriae 1–3 with one regular row, 4–7 with two irregular rows of short, erect, subspatulate, apically obtuse setae, shorter than half interstria width; distance between two setae $2\times$ one seta length; pronotum with similar setae, head with rostrum with slightly shorter setae; lateral setae on pronotum 5–6, small, subrectangular, about $3\times$ as long as wide; ventrites with dense appressed scales, not isolated, and spatulate setae, slightly longer than scales.

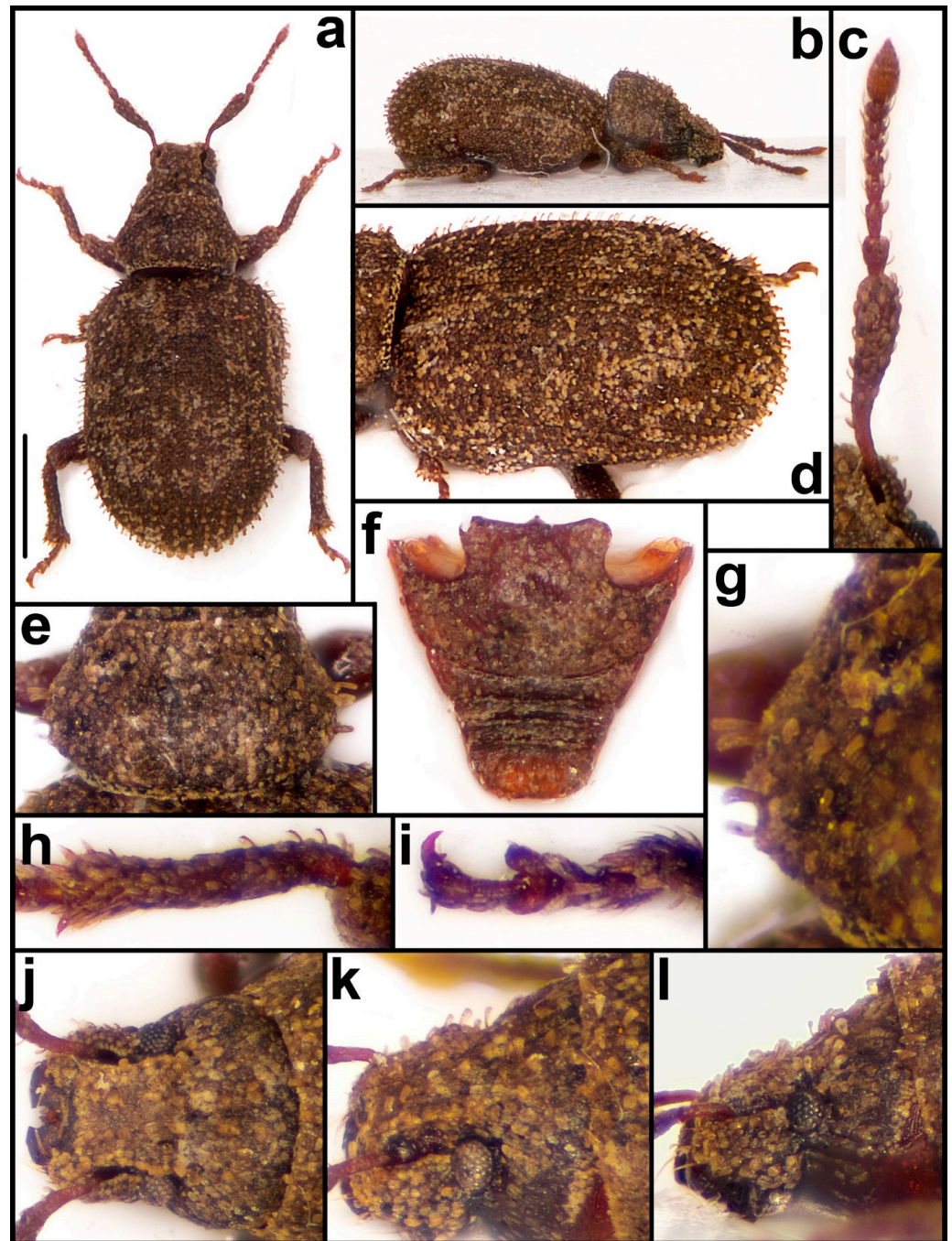


Figure 14. *Nama switzeriae* sp. n. Habitus photographs, dorsal view (a), lateral view (b); antenna (c); elytra, dorso-lateral view (d); pronotum, dorsal view (e), detail of sides (g); ventrites (f); protibia (h); protarsus (i); rostrum, dorsal view (j), dorso-lateral view (k), lateral view (l). Bar: 1 mm.

Rostrum $1.85\times$ as wide as long, subparallel, with straight sides; epifrons narrow, slightly tapering apicad, with concave sides, at base $1.3\times$ as wide as at apex; dorsally flat with two longitudinal striae in lateral parts. Antennal scrobes narrowly visible in dorsal view. Eyes small, vaulted, hardly prominent from outline of head in dorsal view; in lateral view placed at middle of head. Vertex wide, regularly domed with distinct middle longitudinal stria; head distinctly enlarged posteriad.

Antennae slender; scape $4.7\times$ as long as wide at apex, in basal quarter slightly curved, then elongate subtriangular, evenly enlarged apicad, at apex $1.4\times$ as wide as club. Funicle 7-segmented; segment 1 $1.5\times$ as long as wide and $1.1\times$ as long as segment 2, this $1.8\times$ as

long as wide; segments 3 and 4 1.2× as long as wide; segments 5 and 6 as long as wide; segment 7 1.1× as wide as long; club twice as long as wide.

Pronotum wide, 1.74× as wide as long, widest at basal third, distinctly more tapering anteriorly than posteriorly, lateral lobes very scarcely developed; disc regularly convex; in lateral view slightly domed, flattened behind anterior margin.

Elytra long oval, 1.35× as long as wide, subparallel-sided, apically broadly rounded; in lateral view almost flat. Striae very narrow; interstriae flat and wide.

Protibiae 6.0× as long as wide at midlength, slightly curved, apically slightly rounded, slightly widened outwards, armed with 6 yellow, slender, equally spaced spines, lateral spine finer and shorter, mucro brown, strong. Tarsi slender; segment 2 1.2× as wide as long; segment 3 1.4× as wide as long and 1.6× as wide as segment 2; onychium 1.7× as long as segment 3.

Ventrites broad, length/width ratio 0.95, ventrite 1 widened at base, margin distinctly curved almost from sides, distinctly longer than 2–5 together, ratio length ventrite 1/length ventrites 2–5 1.31; ventrite 5 very wide and short, 2.5× as wide as long.

Penis in basal half subparallel-sided with slightly concave sides, in apical half evenly subtriangular with straight sides.

Biology. The type specimen was sifted from litter under *Euphorbia* sp.

Origin of the name. Kathrine Virginia Switzer (born 1947) is an American marathon runner. In 1967 she became the first woman to run the Boston Marathon as an officially registered competitor. During her run race manager Jock Semple assaulted Switzer, trying to grab her bib number and thereby remove her from official competition. She was inducted into the National Women's Hall of Fame in 2011 for creating a social revolution by empowering women around the world through running.

Differential remarks. See description of *Nama khalidae*.

Nama peternormani Meregalli & Borovec sp. n.

Nama sp. 335a, in Meregalli et al., 2021 [2].

Figure 15 (Morphology); Figure 17h,s (Terminalia)

Zoobank registration: urn:lsid:zoobank.org:act:17A4F604-C69F-4BAE-991B-ED25FC01710B

Type material. Holotype: ♂, RSA Northern Cape 545 m/Steinkopf 16.xi.2013/west side Anenous Pass/29°14.475' S, 17°35.922' E//Sifting of detritus, dry/leaves and branches/below shrubby *Euphorbia*/R. Borovec, M. Meregalli lgt. (SANP). **Paratypes:** 9 spec., same data as the holotype (BMNH, CMNC, MMTI, RBSC); same data, but 16.xi.2016, 2 spec. (MMTI, RBSC).

Description. Body length 2.22–2.84 mm, holotype 2.34 mm. Body densely covered with isolated, regularly rounded, finely striate appressed scales, 4–5 across each interstria. Interstriae with a row of slender, spatulate erect setae, apically obtuse, slightly wider and 2–3× longer than diameter of one scale, longer on lateral interstriae; distance between two setae about 4–5× one seta length. Pronotum and head with rostrum with similar setae, irregularly scattered; lateral setae of pronotum 6–7, erect, long and thick, 4× as long as wide. Elytra marbled with grey and dark brown small spots, pronotum dark brown with two oval longitudinal grey spots, not always distinct. Ventrites light brownish, with dense isolated scales and short spatulate setae, scarcely longer than scales.

Rostrum 1.59–1.67× as wide as long, with slightly rounded sides, subequal in width at base and at apex; epifrons very wide, almost as wide as rostrum in dorsal view, slightly tapering apically with straight sides, at base 1.12–1.15× as at apex, dorsally flat with median longitudinal stria, posteriorly reaching vertex, and 2 indistinct lateral striae. Antennal scrobes in dorsal view invisible. Eyes small, moderately vaulted, prominent from outline of head; in lateral view placed at middle of head. Vertex wide and flat; head distinctly enlarged posteriorly, with rounded sides.

Antennae short, scape 4.5–5.8× as long as wide at apex, at basal third slender, then distinctly curved, in apical two thirds conspicuously enlarged, slightly curved, before apex widest and here 1.3–1.4× as wide as club. Funicle 7-segmented; segment 1 1.6–1.7×

as long as wide, conical, $1.4\text{--}1.5\times$ as long as segment 2, this $1.6\text{--}1.7\times$ as long as wide; segments 3–5 isodiametric; segment 6 $1.1\times$ as wide as long; segment 7 $1.2\text{--}1.3\times$ as wide as long; club $1.7\text{--}1.8\times$ as long as wide.

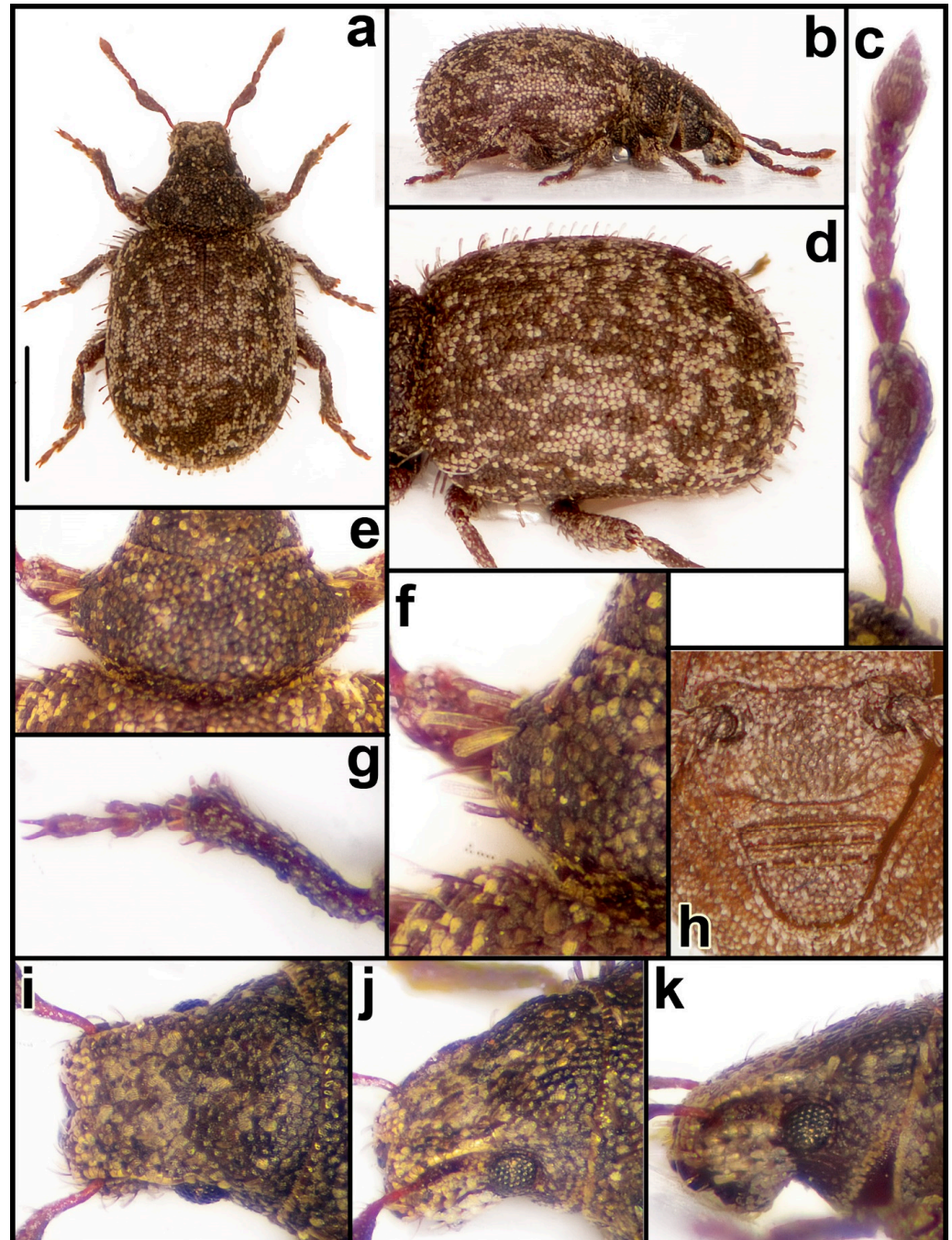


Figure 15. *Nama peternormani* sp. n. Habitus photographs, dorsal view (a), lateral view (b); antenna (c); elytra, dorso-lateral view (d); pronotum, dorsal view (e), detail of sides (f); ventrites (h); protibia and protarsus (g); rostrum, dorsal view (i), dorso-lateral view (j), lateral view (k). Bar: 1 mm.

Pronotum very wide and short, $2.23\text{--}2.42\times$ as wide as long, widest at basal third with distinctly rounded sides, behind anterior margin constricted, lateral lobes moderately prominent; disc regularly domed; base slightly arched. Pronotum in lateral view flat.

Elytra oval, $1.19\text{--}1.22\times$ as long as wide, subparallel-sided, apically broadly rounded. Striae very narrow, interstriae flat. Elytra in lateral view almost flat.

Protibiae 5.5–5.8× as long as wide at midlength, apically rounded, armed with 5–6 short, stout, yellow spines and light brownish mucro. Tarsi long, segment 2 1.2–1.3× as wide as long; segment 3 1.3× as wide as long and 1.3× as wide as segment 2; onychium 2.0–2.2× as long as segment 3.

Ventrites short and broad, length/width ratio of ventrite 1 at base 0.95, ventrite 1 with margin moderately convex medially, almost straight near sides, 0.90× as long as ventrites 2–5 together; ventrite 2 very narrow at midwidth, only as long as ventrite 3; ventrite 5 rather short, 2.13× as wide as long.

Penis short, widest at base and evenly tapering apicad, broadly rounded apically.

Female sternite VIII with plate umbrella-shaped, almost twice as wide as long and with apodeme terminating inside plate, Y-shaped. Spermatheca with cornu short, almost straight; corpus large, subtriangular; ramus narrowly subtrapezoidal, slightly longer than wide and conspicuously longer and wider than hump-shaped collum, slightly separated from ramus at base.

Biology. All type material was sifted from litter under *Euphorbia* sp.

Origin of the name. Peter Norman (1942–2006) was an Australian track athlete, who won the silver medal in the 200 metres at the 1968 Summer Olympics in Mexico City. During the medal ceremony he wore a badge of the Olympic Project for Human Rights in support of fellow athletes John Carlos and Tommie Smith. Returning home after the race, he was violently condemned by the Australian media for what he did during the award ceremony and continually boycotted by sports officials, being forever excluded from competitive racing. It was only in 2012 that the Australian Parliament passed a belated rehabilitation.

Differential remarks. *Nama peternormani* is similar to *N. wallacei* (Figure 16), which differs by the ventrites longer than wide, with ventrite 2 almost as long as 3 and 4 together; the pronotum with lateral lobes moderately expanded and subangular anteriorly, with scales long digitate on its dorso-lateral parts; the very compact segments of the funicle; the apex of the protibia sublobate, with stout spines and the short and thick onychium.

Nama wallacei Meregalli & Borovec sp. n.

Nama sp. 1, in Meregalli et al., 2021 [2].

Figure 16 (Morphology)

Zoobank registration: urn:lsid:zoobank.org:act:8E5B344D-FB96-4DE3-8B44-F16AC57552F3

Type material. Holotype: ♀, South Africa: N. [Northern] Cape/Pofadder/29°07.2' S, 19°25.9' E/29.iv.2002 A. Jürgens/Col-014-02//National coll/of insects (SANC)/Pretoria, South Africa (SANC). The holotype lacks the left antennal funicle with club.

Description. Body length 2.75 mm. Body densely covered with moderately large, regularly rounded appressed scales, reciprocally isolated, 4 across each interstria, on pronotum and head with rostrum with fringes on circumference. Interstriae with one regular row of semi-erect, subspatulate setae; setae apically rounded, on inner 6 interstriae short, about as long as quarter of interstriae width, distance between two setae about 5× one seta length, setae on lateral interstriae longer. Setae on pronotum and head with rostrum similar to elytral ones, irregularly scattered, lateral setae of pronotum 4, large, thick and elongate, broader in basal part, 4× as long as wide. Ventrites with scales round, translucent, very dense.

Rostrum 1.89× as wide as long, subparallel-sided, with straight sides; epifrons very wide, occupying majority of rostral width in dorsal view, at base almost as wide as width of rostrum, slightly tapering apicad, at base 1.1× as wide as at apex, with slightly convex sides, dorsally regularly flat, with very slender median longitudinal stria. Antennal scrobes dorsally invisible. Eyes medium sized, moderately vaulted and prominent from outline of head; in lateral view placed in middle of head. Vertex wide and flat, with elongate fovea; head short, evenly enlarged posteriad.

Antennae short; scape thick, 4.0× as long as wide at apex, moderately curved at middle and slightly at apical third, apical half enlarged, at apex 1.3× as wide as club. Funicle 7-segmented, short, segments very compact; segment 1 1.6× as long as wide and

twice as long as segment 2, this $1.3\times$ as long as wide; segment 3 $1.2\times$ as wide as long; segment 4 $1.3\times$ as wide as long; segment 5 $1.4\times$ as wide as long; segment 6 $1.6\times$ as wide as long; segment 7 $1.8\times$ as wide as long; club $1.8\times$ as long as wide.

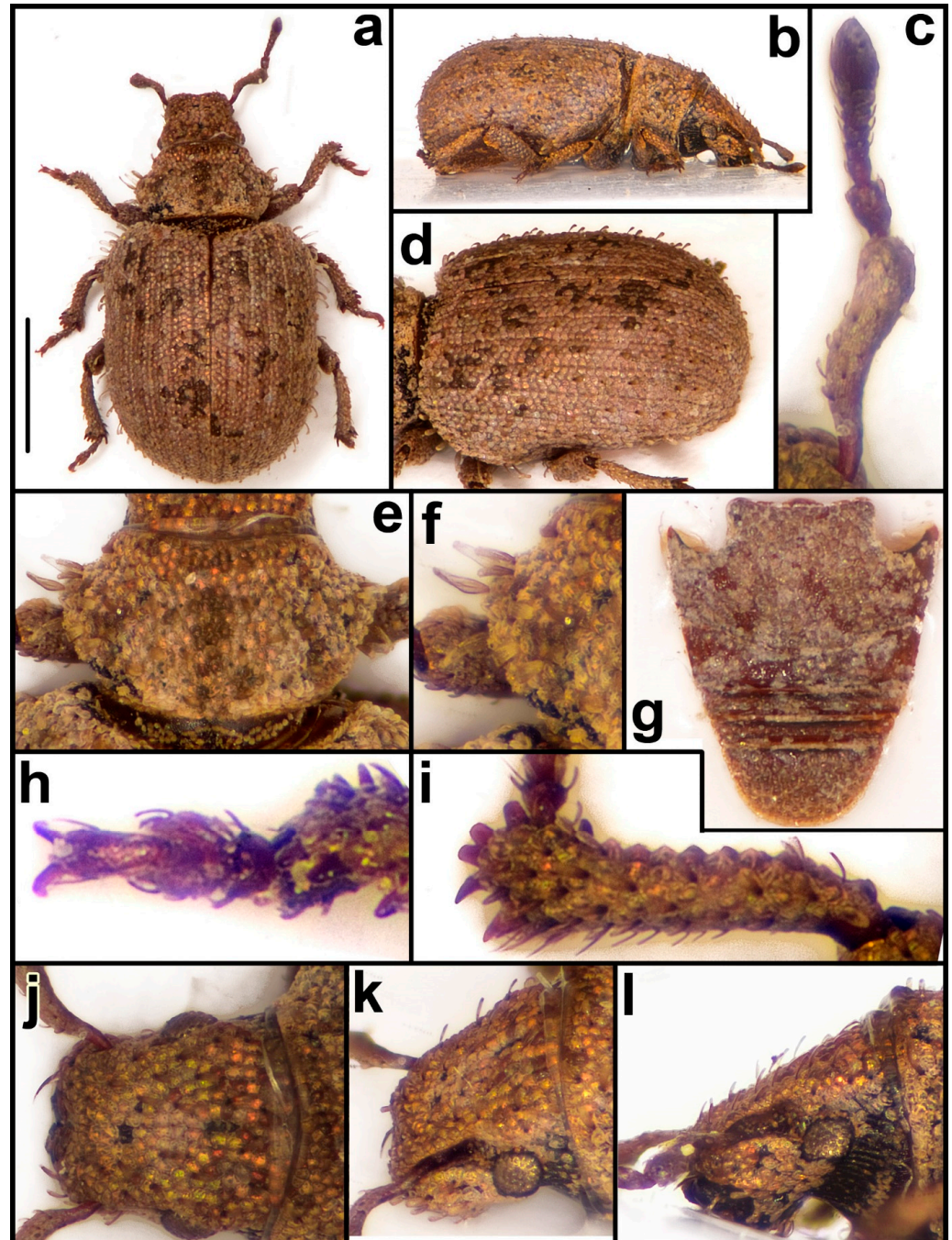


Figure 16. *Nama wallacei* sp. n. Habitus photographs, dorsal view (a), lateral view (b); antenna (c); elytra, dorso-lateral view (d); pronotum, dorsal view (e), detail of sides (f); ventrites (g); protibia (i); protarsus (h); rostrum, dorsal view (j), dorso-lateral view (k), lateral view (l). Bar: 1 mm.

Pronotum wide, $1.62\times$ as wide as long, widest behind midlength, behind anterior margin constricted, lateral lobes moderately developed, anterior margin linear, posterior margin curved; disc regularly domed; base weakly curved. Pronotum in lateral view vaulted.

Elytra oval, $1.26\times$ as long as wide, with distinctly rounded humeral calli, then subparallel-sided, apically broadly rounded. Striae narrow, finely densely punctate; interstriae wide, flat.

Protibiae $5.6\times$ as long as wide at midlength, with a series of conically raised scales on outer margin, apically rounded with short shallow indentation in inner part, slightly widened outwards. Apex armed on outer part with 4 reddish, short, rounded, stout spines, on inner part with one acute, longer, claw-shaped spine and two further very tiny spines. Tarsi short, segment 2 $1.2\times$ as wide as long; segment 3 $1.2\times$ as wide as long and $1.3\times$ as wide as segment 2; onychium $1.4\times$ as long as segment 3.

Ventrites elongate, length/width ratio 1.2, sides sublinearly convergent towards ventrite 5; ventrite 1 scarcely broadened laterally, margin almost linear towards sides, convex only in median part, at midlength distinctly shorter than 2–5 together, ratio length ventrite 1/length ventrites 2–5 0.80, ventrite 2 long, as long as 3–4 together, ventrite 5 $2\times$ as wide as long.

Female sternite VIII with plate umbrella-shaped, more than twice as wide as long, with apodeme terminated inside plate, Y-shaped. Spermatheca not examined.

Biology. Unknown.

Origin of the name. This species is named after the naturalist, explorer, geographer, anthropologist, biologist and illustrator Alfred Russell Wallace (1823–1913), who established the fundamental bases of zoogeography and, independently from Darwin, conceived the theory of evolution through natural selection.

Differential remarks. See description of *Nama peternormani*, the most similar species.

3.4. Key to the Genus *Nama*

1. Funicle 5-segmented (Figure 3c). Appressed scales on elytra large, two across each interstria (Figure 3d). Size 1.9–2.6 mm *Nama chaslavskae* sp. n.
 - Funicle 7-segmented. Appressed scales on elytra smaller, at least 3–4 across each interstria 2
2. Pronotum very short and wide, at least $1.94\times$ as wide as long, almost as wide as elytra or only slightly narrower, behind anterior margin distinctly constricted, laterally with conspicuous, dorso-ventrally flattened lobes, lobes apically wide and rounded (Figures 4f and 5f) 3
 - Pronotum narrower, 1.6 – $1.8\times$ as wide as long, distinctly narrower than elytra; only in *N. peternormani* more than twice as wide as long, but with lateral lobes very small, not prominent (Figures 9f and 10f) 7
3. Spines at apex of protibiae dark brown, almost black (Figure 4h). Ventrite 2 in middle longer than 3 + 4 together. Suture between ventrites 1 and 2 straight (Figure 4g). Size 2.0–2.6 mm *Namastartorum* sp. n.
 - Spines at apex of protibiae yellow to light brown (Figure 5h). Ventrite 2 in middle as long as 3 or 4. Suture between ventrites 1 and 2 deeply arched (Figure 5g) 4
4. Antennal scape slender, at least $4.4\times$ as long as wide at midlength, curved in basal third, at apex slender, at most $1.2\times$ as wide as club (Figures 5c and 6c) 5
 - Antennal scape robust, at most $3.6\times$ as long as wide at midlength, curved in basal quarter, at apex wider, at least $1.4\times$ as wide as club (Figures 7c and 8c) 6
5. Bigger, 3.3–3.9 mm. Appressed scales on elytra small, reciprocally isolated. Erect elytral setae as long as half interstria width, at least $5\times$ as long as wide at apex (Figure 5d). Pronotal lobes strongly expanded, posterior margin concave, not regularly continuing curvature of sides towards base (Figure 5f) *Nama ginobartalii* sp. n.
 - Smaller, 2.1–2.8 mm. Appressed scales on elytra large, imbricated. Erect elytral setae as long as $1/3$ to $1/4$ of interstria width, at most twice as long as wide at

- apex (Figure 6d). Pronotal lobes moderately expanded, posterior margin convex, continuously curved towards base (Figure 6f) *Nama yusrae* sp. n.
6. Length/width ratio of pronotum 0.50, line joining anterior apices of lateral lobes passing behind anterior margin at midwidth (Figure 7e). Size 2.3–2.6 mm *Nama goegapensis* sp. n.
 - Length/width ratio of pronotum 0.30, line joining anterior apices of lateral lobes passing before anterior margin at midwidth (Figure 8e). Size 2.8 mm *Nama semilunata* sp. n.
7. Spines at apex of protibiae black (Figure 9h). Ventrite 2 at middle longer than 3 + 4 together. Suture between ventrites 1 and 2 straight or very weakly curved (Figure 9g) 8
 - Spines at apex of protibiae yellow to brown (Figure 13 h). Ventrite 2 at middle as long as 3 or 4. Suture between ventrites 1 and 2 deeply arched (Figure 13g) 10
8. Protibiae armed with 9 spines: 5 apical, robust, and 4 subapical, very fine and short (Figure 9h). Onychium short, 1.3× as long as tarsal segment 3 (Figure 9i). Margin of ventrite 1 feebly but visibly curved (Figure 9g). Penis apically broadly rounded (Figure 17e). Size 2.7–2.8 mm *Nama martiana* sp. n.
 - Protibiae armed with 5–6 spines (Figure 10h). Onychium long, 1.7–1.8× as long as tarsal segment 3 (Figure 10i). Margin of ventrite 1 straight (Figure 10g). Penis distinctly tapering apicad (Figure 17g). Size 2.0–2.5 mm 9
9. Protibiae apically broadly rounded with 6 spines, no spines on preapical area (Figure 10h). Elytral setae semierect, dense, distance between two setae slightly longer than length of one seta (Figure 10d). Size 2.0–2.5 mm *Nama smithi* sp. n.
 - Protibiae apically lobed with two indentations; spines present on apex and preapical area (Figure 11h). Elytral setae sparse, distance between two setae at least 5× length of one seta (Figure 11d). Size 2.2–2.7 mm ... *Nama kostali* sp. n.
10. Small species, less than 2 mm. Rostrum very short, more than twice as wide as long *Namaseriehispidia* sp. n.
 - Bigger species, at least 2.7 mm. Rostrum short, less than twice as wide as long 11
11. Antennal scape curved at base, straight in apical 2/3, evenly broadened apicad (Figures 2c and 13c). Lateral setae of pronotum at most 3× as long as wide 12
 - Antennal scape distinctly bisinuate from base to apex, outer side convex in apical part (Figures 15c and 16c). Lateral setae of pronotum 4× as long as wide 14
12. Antennal scape in basal quarter distinctly S-shaped (Figure 2c). Ventrites slender, length/width ratio >1.10 (Figure 2h). Size 2.7–3.4 mm *Nama richtersveldiana* Borovec & Meregalli, 2013
 - Antennal scape in basal quarter slightly curved, not distinctly S-shaped (Figure 13c). Ventrites broad, ratio length/width <0.90 13
13. Pronotum and elytra with reciprocally isolated scales; elytral interstriae 2 and 3 with two irregular rows of setae. Elytral erect setae apically rounded (Figure 13d). Pronotum with moderately broadened lateral lobes, length/width ratio 0.55, behind anterior margin distinctly constricted (Figure 13e,f). Bigger, 3.6 mm *Namakhaliidae* sp. n.

- Pronotum and elytra with scales appressed to one another; elytral interstriae 1–3 with one regular row of setae. Elytral erect setae apically truncate (Figure 14d). Pronotum with scarcely broadened lateral lobes, length/width ratio 0.60, slightly constricted behind anterior margin (Figure 14e,f). Smaller, 3.0 mm *Nama switzeriae* sp. n.
 - *Nama switzeriae* sp. n.
14. Pronotum strongly transverse, 2.23–2.42× as wide as long (Figure 15d). Protibiae armed with 5–6 spines subequal in length and shape. Onychium long, 2.0–2.2× as long as segment 3 (Figure 15g). Rostrum 1.59–1.67× as wide as long (Figure 15i). Funicle segments long and slender, segment 2 1.6–1.7× as long as wide, segments 3–5 as long as wide (Figure 15c). Size 2.2–2.8 mm *Namapeternormani* sp. n.
- Pronotum moderately transverse, 1.62× as wide as long (Figure 16e). Protibiae armed with 4 broad, rounded spines at apex and one narrower, claw-shaped, inner spine. Onychium short, 1.4× as long as segment 3 (Figure 16h). Rostrum 1.89× as wide as long (Figure 16j). Funicle segments short and wide, segment 2 1.3× as long as wide, segments 3–5 distinctly wider than long (Figure 16c). Size 2.8 mm *Nama wallacei* sp. n.

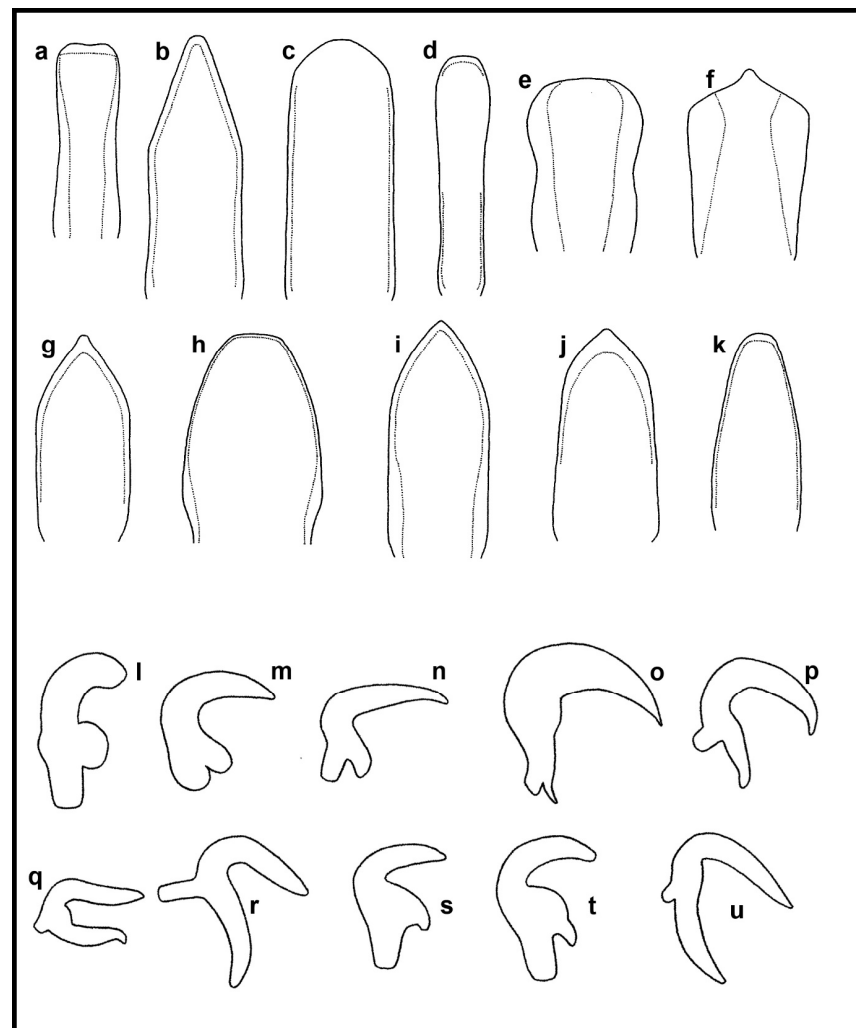


Figure 17. Male terminalia. Penis and tementes of: *Nama ginobartalii* (a); *N. switzeriae* (b); *N. goegapensis* (c); *N. richtersveldiana* (d); *N. martiana* (e); *N. chaslavskae* (f); *N. smithi* (g); *N. peternormani* (h); *N. kostali* (i); *N. startorum* (j); *N. yusrae* (k). Female terminalia. Spermatheca of: *N. semilunata* (l); *N. chaslavskae* (m); *N. seriehispidia* (n); *N. khalidae* (o); *N. goegapensis* (p); *N. kostali* (q); *N. smithi* (r); *N. peternormani* (s); *N. richtersveldiana* (t); *N. startorum* (u).

Author Contributions: All authors listed have made a substantial, direct, and intellectual contribution to the work and approved it for publication. All authors have read and agreed to the published version of the manuscript.

Funding: This research was supported by the grant “Advanced research supporting the forestry and wood-processing sector’s adaptation to global change and the 4th industrial revolution,” No. CZ.02.1.01/0.0/0.0/16_019/0000803 financed by OP RDE.

Institutional Review Board Statement: The study was carried out under the following research permits. 2012: SANParks. Permit released September 7, 2012, unnumbered; Northern Cape Province: ODB 1977 & 1987/2012; Cape Nature: AAA041-00157-0056. 2013: SANParks. Permit released September 7, 2012, unnumbered, renewed; Northern Cape Province: ODB 1764 & 1794/2013; Cape Nature: AAA007-00085-0056. 2016: SANParks: Permit number CRC/2016/035–2012/V1; Northern Cape: ODB 2399/2016; Cape Nature: AAA041-00158-0056. 2018: SANParks: Permit number MERM/AGR/035–2012/2017–2022/V1; Northern Cape: ODB 2399/2016 renewed; Cape Nature: AAA041-00158-0056. 2019: SANParks: Permit number MERM/AGR/035–2012/2017–2022/V1; Cape Nature: CN44-28-11324.

Data Availability Statement: All data are published in this paper.

Acknowledgments: We are indebted to friends and colleagues who lent us specimens for study. In particular we thank Max Barclay (Natural History Museum, London, UK), Johannes Bergsten (Naturhistoriska Riksmuseet, Stockholm, Sweden), Ruth Mueller (Ditsong National Museum of Natural History, Pretoria, South Africa), and Riaan Stals (South African National Collection of Insects, Pretoria, South Africa) for allowing the examination of extensive material of South African weevils, including many type specimens, deposited in these institutions. We are also indebted to friends who gave us specimens collected during their field research in South Africa.

Conflicts of Interest: The authors declare that they have no conflict of interest.

References

1. Borovec, R.; Meregalli, M. Soil insect research in South Africa. 1. A new genus of terricolous weevils with four new species from the Richtersveld National Park (Coleoptera: Curculionidae: Entiminae: Trachyphloeini). *Zootaxa* **2013**, *3646*, 501–515. [[CrossRef](#)] [[PubMed](#)]
2. Meregalli, M.; Borovec, R.; Cervella, P.; Santovito, A.; Toševski, I.; Ottati, S.; Nakládal, O. The Namaini, a new weevil tribe with six new genera from South Africa (Coleoptera: Curculionidae: Entiminae). *Zool. J. Linn. Soc.* **2021**, *193*, 95–123. [[CrossRef](#)]
3. Lyal, C.H.C. (Ed.) Glossary of Weevil Characters. International Weevil Community Website. Available online: <http://weevil.info/glossary-weevil-characters> (accessed on 1 June 2023).
4. Oberprieler, R.G.; Anderson, R.S.; Marvaldi, A.E. Curculionoidea Latreille, 1802: Introduction, Phylogeny. In *Handbook of Zoology, Arthropoda: Insecta; Coleoptera, Beetles, Volume 3: Morphology and Systematics (Phytophaga)*; Leschen, R.A.B., Beutel, R.G., Eds.; Walter de Gruyter: Berlin, Germany; Boston, MA, USA, 2014; 675p, pp. 285–300.
5. Phillips, D.; Harris, W.J.; Dewit, M.C.J.; Matchen, E. Provenance history of detrital diamond deposits, West Coast of Namaqualand, South Africa. *Miner. Petr.* **2018**, *112*, 259–273. [[CrossRef](#)]
6. McKenna, D.D.; Sequeira, A.D.; Marvaldi, A.E.; Farrell, B.D. Temporal lags and overlap in the diversification of weevils and flowering plants. *Proc. Natl. Acad. Sci. USA* **2009**, *106*, 7083–7088. [[CrossRef](#)] [[PubMed](#)]

Disclaimer/Publisher’s Note: The statements, opinions and data contained in all publications are solely those of the individual author(s) and contributor(s) and not of MDPI and/or the editor(s). MDPI and/or the editor(s) disclaim responsibility for any injury to people or property resulting from any ideas, methods, instructions or products referred to in the content.