



Figure S1. Sampling sites and samples. A) Tannersville Cranberry bog B) Black Moshannon State Park C) Beulah bog D) Nescopeck State Park E) Pepper Run F) Honey Creek Natural Area G) Republic H) Bell Mills I) Deep Creek Lock J) detritus sample K) stream bed sample L) roots.



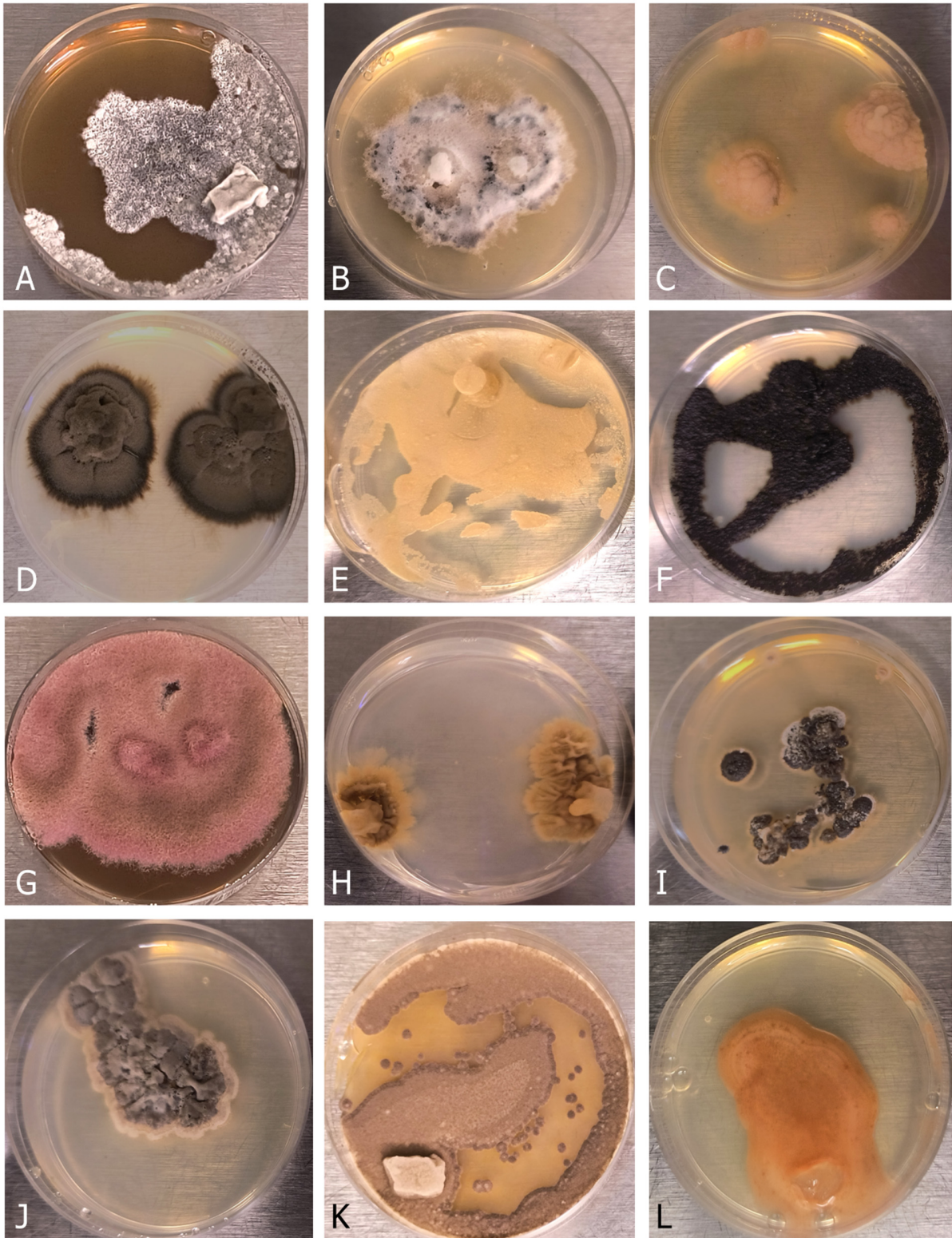


Figure S2. A representation of detritus-inhabiting and saltwater marsh root-associated fungi. A) *Acremonium* sp. B) *Alternaria* sp. C) *Aureobasidium* sp. D) *Cladosporium* sp. E) *Cryptococcus* sp. F) *Exophiala* sp. G) *Fusarium* sp. H) *Leotiomyces* sp. I) *Mycosphaerella* sp. J) *Paraphaeosphaeria* sp. K) *Penicillium* sp. and L) *Rhodotorula* sp.