

## Supplementary tables

## Gardens

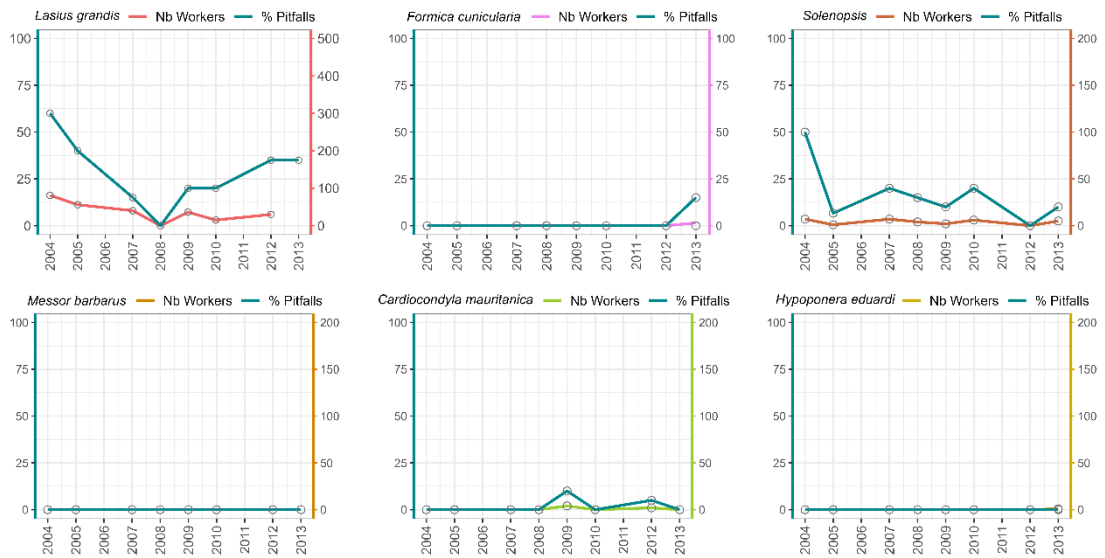
[illegible]



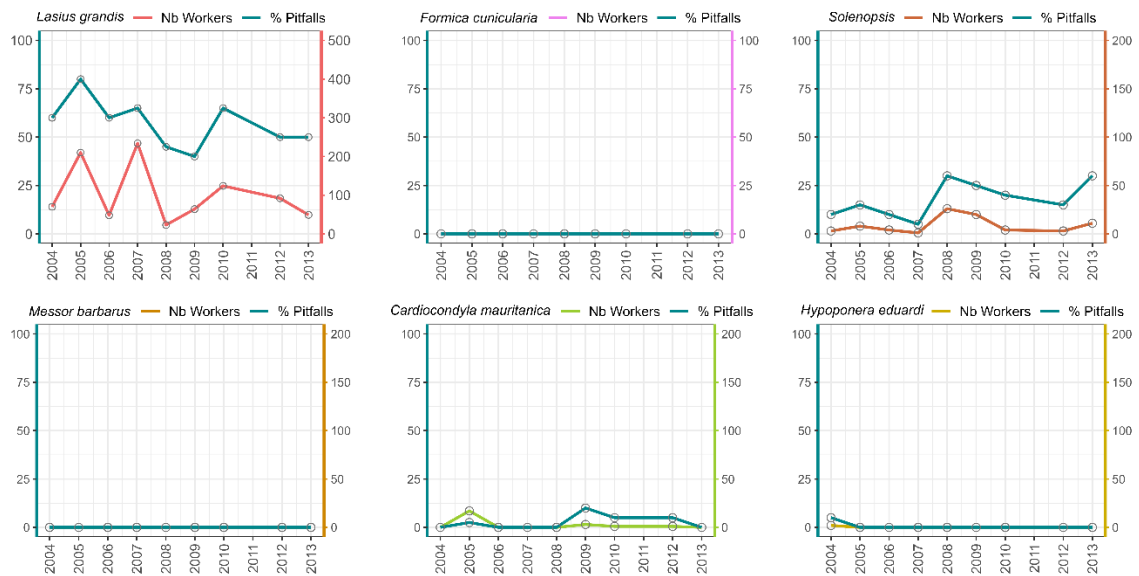
Supplementary Table S2. Anova post-hoc for testing pairwise differences between the different study areas of the campus. Significant results are highlighted in bold.

Pairwise comparisons	Df	Sums Of Sqs	F-Model	R2	p-value	p-adjusted
Garden-1 vs Garden-2	1	24.30555556	6.721644826	0.165063196	0.001	<b>0.036</b>
Garden-1 vs Garden-3	1	36.44852941	12.22912651	0.276494868	0.001	<b>0.036</b>
Garden-1 vs Garden-4	1	41.66578947	13.86933353	0.278113473	0.001	<b>0.036</b>
Garden-1 vs Eucalypts	1	17.14285714	5.310559006	0.218446602	0.001	<b>0.036</b>
Garden-1 vs Elms	1	28.23571429	9.029871727	0.257776329	0.001	<b>0.036</b>
Garden-1 vs Elms-2	1	13.4	3.890322581	0.177718833	0.009	0.063
Garden-1 vs Grassland-1	1	63.55656109	17.45495216	0.258764577	0.001	<b>0.036</b>
Garden-1 vs Grassland-2	1	23.42857143	6.546218487	0.25625	0.002	<b>0.036</b>
Garden-2 vs Garden-3	1	18.88643791	5.906658469	0.155821133	0.001	<b>0.036</b>
Garden-2 vs Garden-4	1	15.48450292	4.843345028	0.118583456	0.001	<b>0.036</b>
Garden-2 vs Eucalypts	1	13.05555556	3.633034988	0.160519126	0.001	<b>0.036</b>
Garden-2 vs Elms	1	28.04126984	8.261970716	0.241141141	0.001	<b>0.036</b>
Garden-2 vs Elms-2	1	14.30555556	3.734891217	0.171838505	0.003	<b>0.042</b>
Garden-2 vs Grassland-1	1	79.86211664	21.12717878	0.297033836	0.001	<b>0.036</b>
Garden-2 vs Grassland-2	1	24.76984127	6.279678068	0.24840815	0.003	<b>0.042</b>
Garden-3 vs Garden-4	1	8.058333333	3.130343711	0.084306888	0.001	<b>0.036</b>
Garden-3 vs Eucalypts	1	6.028508772	2.517534881	0.128988363	0.004	<b>0.048</b>
Garden-3 vs Elms	1	18.59423077	7.35494913	0.234570597	0.001	<b>0.036</b>
Garden-3 vs Elms-2	1	11.73611111	4.538435717	0.220972803	0.006	<b>0.05</b>
Garden-3 vs Grassland-1	1	45.44617647	13.51275974	0.219674094	0.001	<b>0.036</b>
Garden-3 vs Grassland-2	1	17.57236842	6.305651993	0.270563209	0.002	<b>0.036</b>
Garden-4 vs Eucalypts	1	10.51666667	4.129323777	0.164322917	0.002	<b>0.036</b>
Garden-4 vs Elms	1	21.21666667	8.088041752	0.224119718	0.001	<b>0.036</b>
Garden-4 vs Elms-2	1	13.62272727	5.031478217	0.201006036	0.004	<b>0.048</b>
Garden-4 vs Grassland-1	1	75.06895425	22.40750808	0.301145794	0.001	<b>0.036</b>
Garden-4 vs Grassland-2	1	22.89347826	7.992735552	0.275680628	0.001	<b>0.036</b>
Eucalypts vs Elms	1	10.44358974	4.313372485	0.281673582	0.005	<b>0.05</b>
Eucalypts vs Elms-2	1	9.066666667	3.709090909	0.552845528	0.1	0.4
Eucalypts vs Grassland-1	1	8.878113408	2.439192309	0.065150773	0.015	0.09
Eucalypts vs Grassland-2	1	9.5	2.85	0.416058394	0.1	0.4
Elms vs Elms-2	1	6.116666667	2.240537241	0.183042394	0.029	0.145
Elms vs Grassland-1	1	30.66390374	8.739781754	0.172247129	0.001	<b>0.036</b>
Elms vs Grassland-2	1	15.31538462	5.059136059	0.315031646	0.005	<b>0.05</b>
Elms-2 vs Grassland-1	1	14.05228758	3.73092431	0.098882399	0.002	<b>0.036</b>
Elms-2 vs Grassland-2	1	10.8	2.314285714	0.435483871	0.2	0.4
Grassland-1 vs Grassland-2	1	5.454689984	1.424107302	0.039097933	0.126	0.4

## Supplementary figures



Supplementary Figure S1. Population dynamics over time for the most abundant and representative ant species found in Garden-3 (a mature watered garden).



Supplementary Figure S2. Population dynamics over time for the most abundant and representative ant species found in Garden 4 (a mature watered garden).