

Electronic Supplementary Material (ESI)

Article

Functionalized Graphene Networks on Electrospun 3D Scaffold for Ultrasensitive NO₂ Gas Sensor

Bin Zou ¹, Yunlong Guo ^{1,2}, Nannan Shen ², Anshan Xiao ¹, Mingjun Li ¹, Liang Zhu ^{1,*}, Pengbo Wan ², Xiaoming Sun ^{2,*}

¹ State Key Laboratory of Safety and Control for Chemicals, SINOPEC Research Institute of Safety Engineering, Shandong Qingdao 266101, P.R. China; zoub.qday@sinopec.com (B. Z.); yunlong46@126.com (Y. G.); xiaoas.qday@sinopec.com (A. X.); limj.qday@sinopec.com (M. L.); zhul.qday@sinopec.com (L. Z.)

² State Key Laboratory of Chemical Resource Engineering, P.O. Box 98, Beijing University of Chemical Technology, Beijing 100029, P.R. China; yunlong46@126.com (Y. G.); shen_frank@126.com (N. S.); pbwan@mail.buct.edu.cn (P. W.); sunxm@mail.buct.edu.cn (X. S.)

* Correspondence: zhul.qday@sinopec.com (L. Z.); sunxm@mail.buct.edu.cn (X. S.); Tel.:+86-10-64448751 (X. S.)

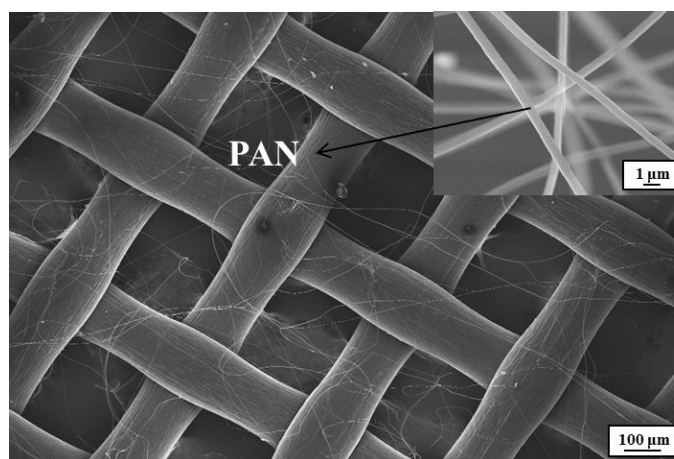


Figure S1. SEM image of electrospun PAN onto nylon window screens for 0.5 h.

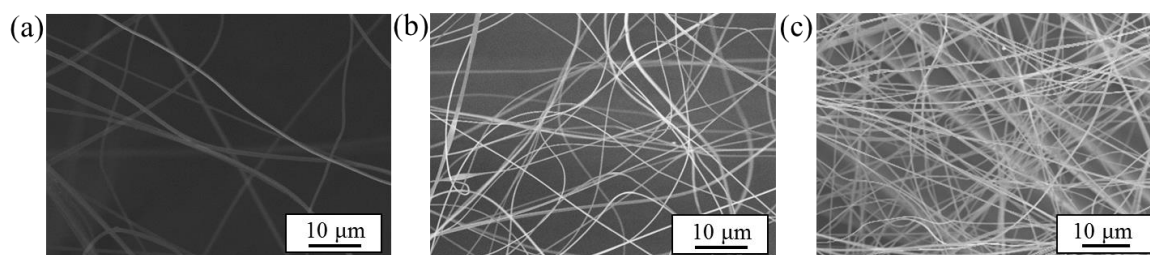


Figure S2. SEM images of electrospun PAN onto nylon window screens for (a) 0.5 h, (b) 1.0 h, and (c) 1.5 h, respectively.

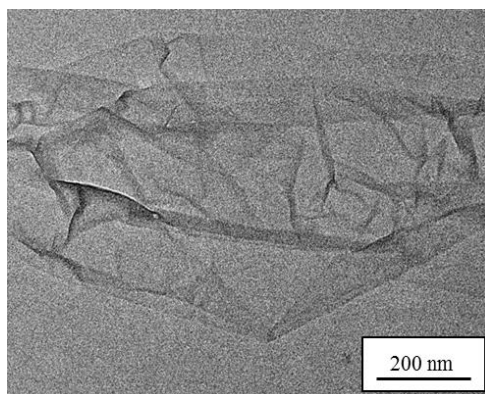


Figure S3. TEM image of SFRGO.

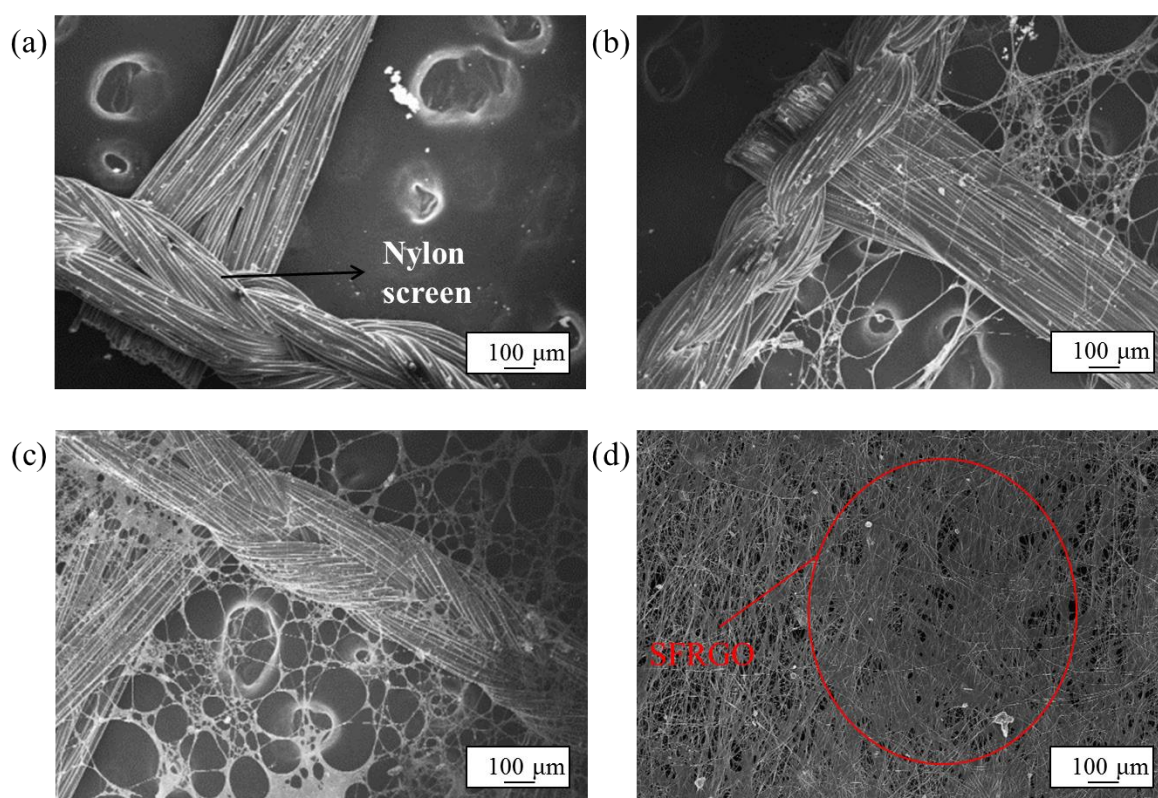


Figure S4. SEM images of SFRGO wrapping onto the electrospun PAN nanofibers with electrospinning time at (a) 0 h, (b) 0.5 h, (c) 1.0 h, (d) 1.5 h.

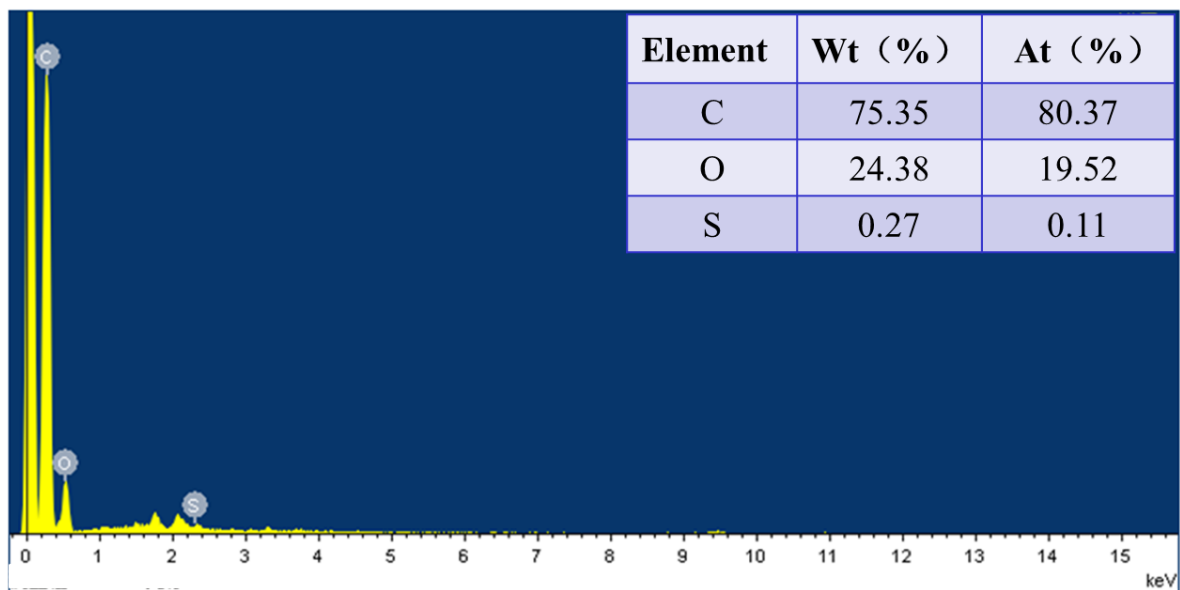


Figure S5. The EDX spectra of SFRGO.

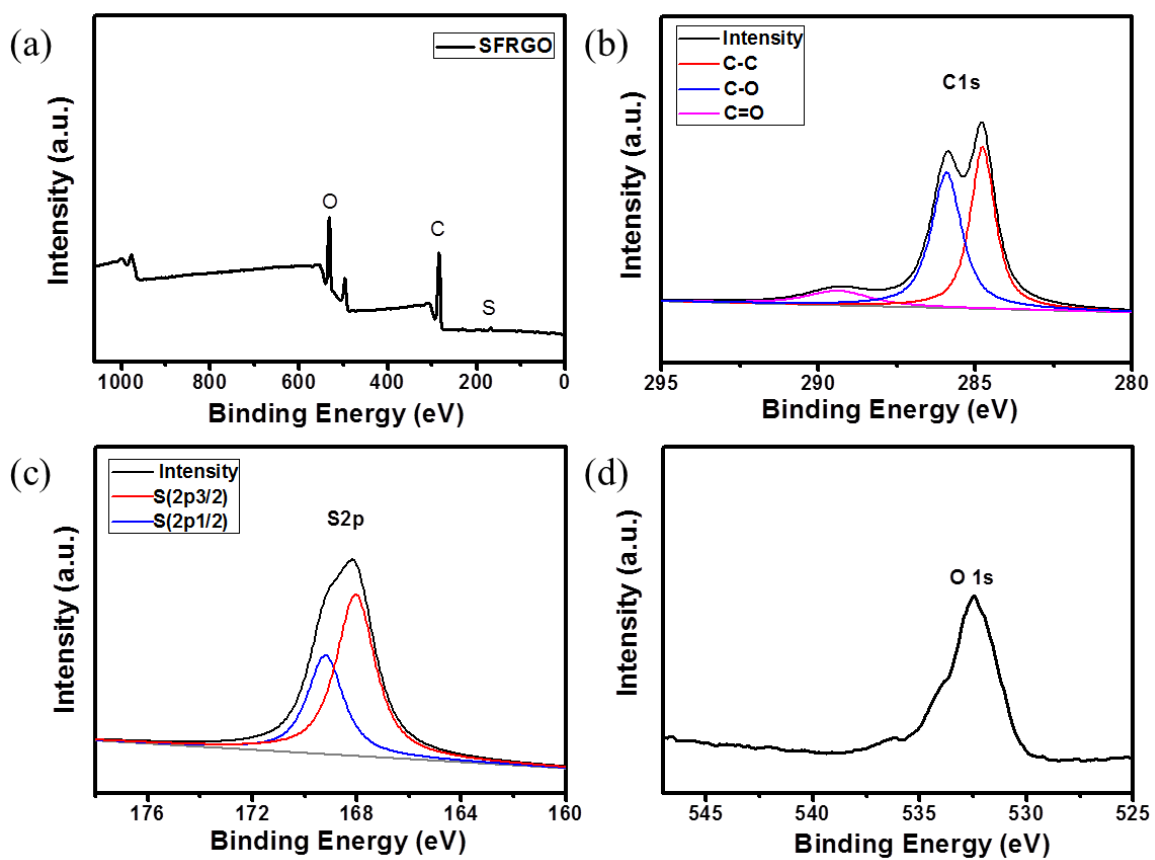


Figure S6. The XPS spectra of SFRGO.

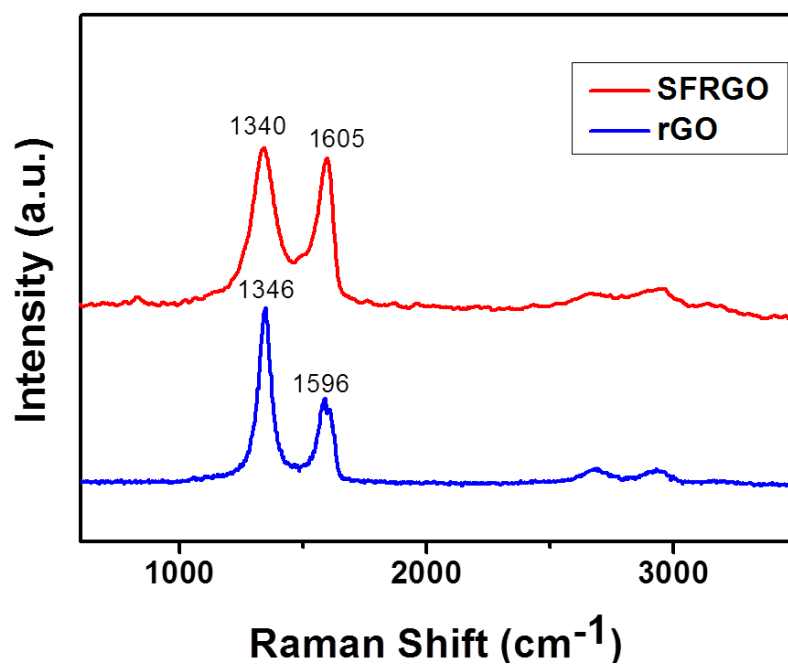


Figure S7. Raman spectra of SFRGO and rGO.

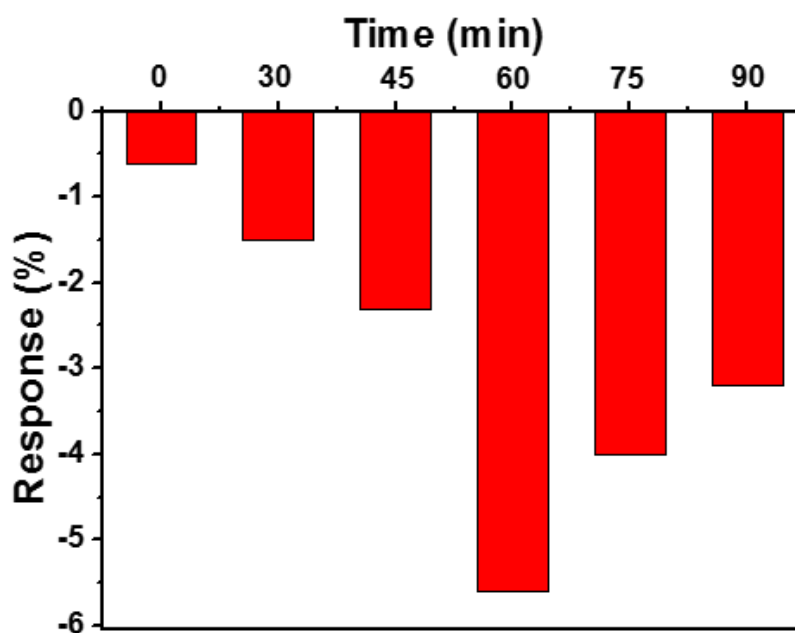


Figure S8. Sensing responses of SFRGO networks wrapped onto the electrospun PAN nanofiber scaffolds with different electrospinning time.