

Article

A Methodology to Monitor Airborne PM₁₀ Dust Particles Using a Small Unmanned Aerial Vehicle

Miguel Alvarado ^{1,*}, Felipe Gonzalez ², Peter Erskine ¹, David Cliff ³ and Darlene Heuff ⁴

¹ Environment Centre, Sustainable Mineral Institute, The University of Queensland, 4072 Brisbane, Australia; p.erskine@uq.edu.au

² Science and Engineering Faculty, Queensland University of Technology (QUT), 4000 Brisbane, Australia; felipe.gonzalez@qut.edu.au

³ People Centre, Sustainable Mineral Institute, The University of Queensland, 4072 Brisbane, Australia; d.cliff@mishc.uq.edu.au

⁴ Advanced Environmental Dynamics Pty Ltd., Ferny Hills, 4055 Queensland, Australia; darlene.heuff@aedconsultants.com.au

* Correspondence: m.alvaradomolina@uq.edu.au; Tel.: +61-7-3346-4065 or +61-7-3346-4086

Academic Editor: Assefa M. Melesse

Received: 15 December 2016; Accepted: 4 February 2017; Published: 14 February 2017

Abstract: Throughout the process of coal extraction from surface mines, gases and particles are emitted in the form of fugitive emissions by activities such as hauling, blasting and transportation. As these emissions are diffuse in nature, estimations based upon emission factors and dispersion/advection equations need to be measured directly from the atmosphere. This paper expands upon previous research undertaken to develop a relative methodology to monitor PM₁₀ dust particles produced by mining activities making use of small unmanned aerial vehicles (UAVs). A module sensor using a laser particle counter (OPC-N2 from Alphasense, Great Notley, Essex, UK) was tested. An aerodynamic flow experiment was undertaken to determine the position and length of a sampling probe of the sensing module. Flight tests were conducted in order to demonstrate that the sensor provided data which could be used to calculate the emission rate of a source. Emission rates are a critical variable for further predictive dispersion estimates. First, data collected by the airborne module was verified using a 5.0 m tower in which a TSI DRX 8533 (reference dust monitoring device, TSI, Shoreview, MN, USA) and a duplicate of the module sensor were installed. Second, concentration values collected by the monitoring module attached to the UAV (airborne module) obtaining a percentage error of 1.1%. Finally, emission rates from the source were calculated, with airborne data, obtaining errors as low as 1.2%. These errors are low and indicate that the readings collected with the airborne module are comparable to the TSI DRX and could be used to obtain specific emission factors from fugitive emissions for industrial activities.

Keywords: PM₁₀; monitoring; blasting; unmanned aerial vehicle (UAV); multi-rotor UAV; optical sensor

1. Introduction

The use of Unmanned Aerial Vehicles (UAVs) to collect environmental data has increased exponentially in only a few years. Their capacity to reach places where humans could be at risk or it could become too expensive for small operations, makes them very useful for gas and particulate monitoring in the mining industry. Several authors have published articles where progress on the use of UAVs for industrial use or investigation has been made by using two UAVs simultaneously [1], combining multiple gas sensors and imagery [2,3], using gas tracking algorithms [4–6], using solar energy [7], and making use of microwave sensors [8].

The methodology applied and tests undertaken for this investigation are a continuation of the work published by Alvarado et al. [9,10]. Improvements to the methodology include: the development of a new modular sensor, focusing only on the use of a multi-rotor UAV with a tailored sampling probe, and the use of a 5 m tower to validate the PM₁₀ readings obtained by the UAV. The emission rates obtained from a point source created for the flight tests, were evaluated to determine the capability of the methodology to be used at open pit mine sites to estimate emission factors. In the following sections these experiments are described and their results discussed.

2. Experimental Development

2.1. Dust Monitoring Module

Following Alvarado et al. [9,10] a sampling module and data logger transmission system were developed using the OPC-N2 particle counter from Alphasense (Great Notley, Essex, UK) [11] with a minimum response time of 0.2 s. In addition to the particle counter the dust monitoring module is integrated with a:

- Barometer, temperature and humidity sensor, BME280 (Bosch, Reutlingen, Germany);
- Raspberry Pi 3 board (Raspberry Pi Foundation, Cambridge, UK);
- uBlox LEA6 GPS (uBlox, Thalwil, Switzerland);
- XBee 2.4 GHz Radio (XBee, Minnetonka, MN, USA);
- 3DR Airspeed Sensor (3DR, Berkeley, CA, USA);
- Lipo battery (3.7 V) (3DR, Berkeley, CA, USA).

The architecture of the dust monitoring module is presented in Figure 1. Information from each sensor (e.g., dust, pressure, temperature and humidity) was sent to a ground station via the XBee 2.4 GHz radio for monitoring, and recorded in a micro-SD card used by the Raspberry Pi. The dust monitoring module was programmed to have a response time of 0.2 s. Time synchronisation was mainly achieved using the GPS time stamp of each reading. The name of each log file was also recorded with the time and date synchronised with the internet using a portable WiFi hot spot.

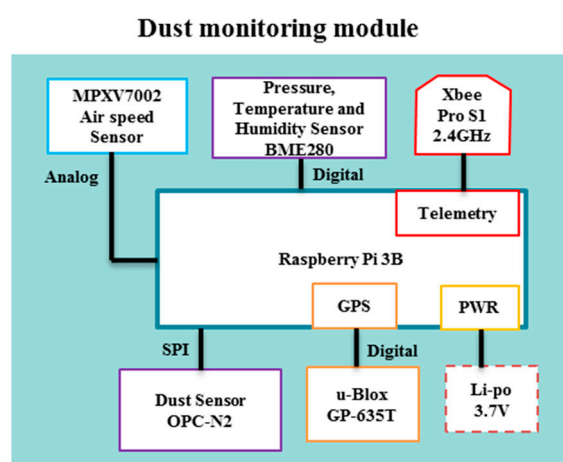


Figure 1. Architecture of dust monitoring module.

The total weight of the dust monitoring module was of 382.0 g and had the following dimensions: 14.0 cm × 9.0 cm × 10.0 cm. The small multi-rotor UAV used for the investigation was an IRIS+ from 3DR (Berkeley, CA, USA), with an endurance of approximately 10 min. The IRIS+ multi-rotor UAV was the selected flying platform due to robustness, user-friendly controls, versatility and ability to be modified and serviced. The IRIS+ was adapted to carry an air sampling probe and an enclosure for the dust monitoring module as shown in Figure 2.

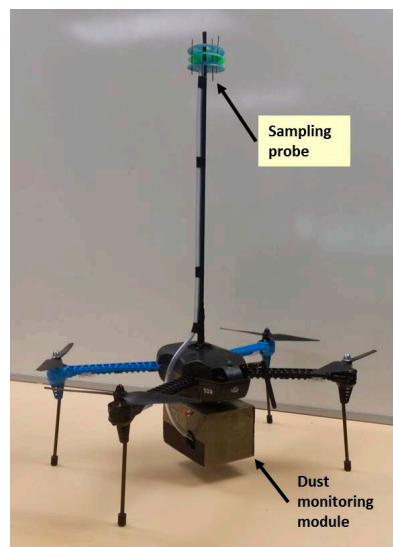


Figure 2. Physical configuration of the multi-rotor UAV with the sampling probe and dust monitoring module attached.

2.2. Aerodynamics Downwash/Upwash Experiment and Analysis

When using a multi-rotor UAV two main issues are identified when obtaining a representative air sample from the atmosphere: difficulty of producing isokinetic flow, and designing an air sampling probe and determining the best position in the multi-rotor UAV.

To understand the disturbance produced by the propellers in the volume of air that will be sampled, an aerodynamic experiment was designed. Through this experiment, it was possible to observe the behavior of the volume of air surrounding the multi-rotor UAV and determine if isokinetic flow would be possible. Isokinetic flow is an important consideration when monitoring or sampling for particles below 10 μm in diameter, otherwise the resulting value could be under or over-predicted [12]. However, being able to obtain isokinetic flow in non-static conditions can be extremely difficult [13,14]. Air flow intake needs to be controlled so the air streamlines are unaltered during the transportation of particles from the atmosphere past the probe's nozzle. To achieve these conditions several factors have to be considered: air velocity has to be equal inside and outside the sampling nozzle, air intake has to have the same direction (iso-axial), and has to be placed out of the air mixing zone [14–16]. Other variables to consider for isokinetic measurements with aircrafts are: diffusion, sedimentation, and turbulent inertial deposition. However, the variables considered will vary depending on the type of aircraft [15–17]. Related literature on the topic mainly focuses on fixed wing UAVs which, due to their flight characteristics, can provide better conditions for isokinetic sampling [16,17]. Factors such as angled flight, static flight or hovering, and constant change in wind direction, make achieving isokinetic conditions very challenging for multi-rotor UAVs. Von der Weiden et al. [12], used a different approach due to the difficulty of sampling in isokinetic conditions. They created a correction calculator for air sampling that does not meet the criteria necessary to be isokinetic and iso-axial. The calculator considers variation in sedimentation, deposition due to inlets, bends, contractions, and diffusion factors. However, their approach was only used and tested for the fixed wing UAV specified in their study.

For the aerodynamics experiment, the UAV was placed indoors and mounted on a 2.5 m pole. Measurements were taken with a Kestrel 2500 anemometer (Minneapolis, MN, USA) which was positioned around the UAV following a grid pattern at different x, y and z positions (Figure 3). With the readings collected, a 3D visualization map was generated to observe the airflow produced by the propeller downwash and upwash (Figure 4).

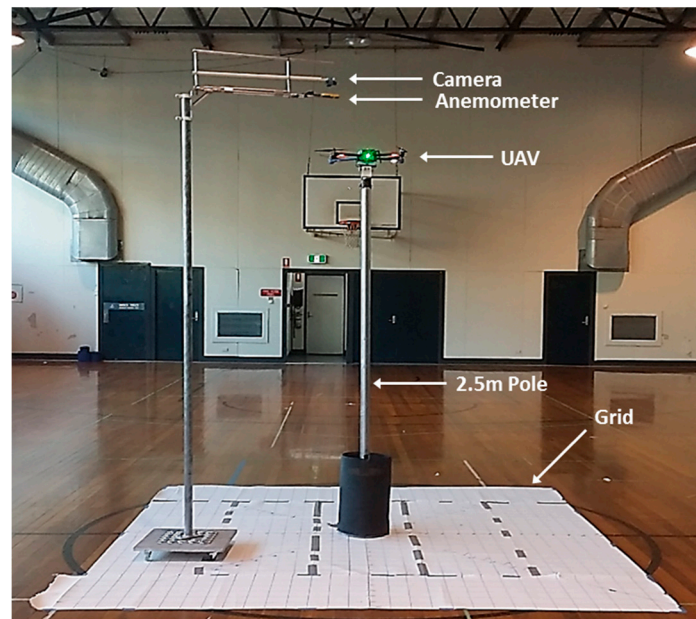


Figure 3. Set up of the multi-rotor UAV and airspeed measuring pole for aerodynamics test.

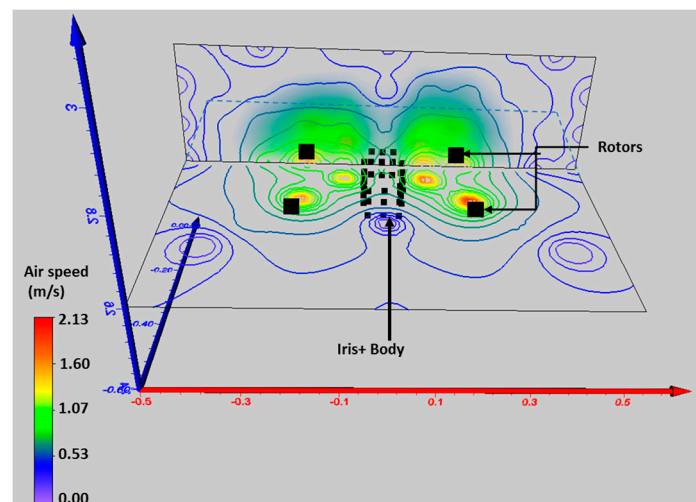


Figure 4. 3D visualization of the different airspeed regions produced by the propellers upwash at the top and sides of the multi-rotor UAV. Axis units in meters.

It was determined that the downwash produced by the multi-rotor UAV does not generate a uniform pattern by observing the readings and visualisations. The downwash varies by forming a cone which increases its base as distance from the center of the UAV increases (Figure 4). The upper side of the UAV on the other hand has a constant air speed flux which drops after a distance of approximately 40.0–45.0 cm. This constant air flux is also observed to the sides of the UAV up to a distance of 40.0–45.0 cm. The constant mixed air boundaries around the multi-rotor UAV helped define the position of the probe on the side of the UAV (horizontally) or on the top of it (vertically). A horizontal probe would increase the capacity of the UAV to collect an isokinetic sample when the wind direction is in line with the direction of the probe. However, when conducting field tests, wind direction varied up to 68° during the testing period (10 min approximately) for three out of four flights conducted. Such ample variation in the intake angle is a considerable change of the ideal conditions required for isokinetic sampling. To overcome this issue, it was decided to use the vertical probe on

top of the UAV at a distance of 47.5 cm from the center of the UAV (Figure 2). The use of a canopy on the top also increases its capacity to retain small volumes of the air targeted. This can be useful in high wind speeds. A vertical probe has the same exposure when taking air samples regardless of the orientation of the multi-rotor UAV or the wind flow.

2.3. Calcined Alumina Correction Factor

A correction factor was calculated for the dust source so the data collected by the sensing module could be used for further estimates. The source of dust chosen for the test was calcined alumina, which is less hygroscopic than talcum powder, used in previous tests [9]. Being less hygroscopic helped keep the optical sensors free of dust adhering to the components and accumulating inside the protective casing. In addition, according to the particle size distribution of the calcined alumina used for the experiment, the dust had a PM₁₀ content of approximately 30%. This value is ten times higher than the average PM₁₀ content found in talcum powder. A higher PM₁₀ content allowed testing the sensor with small amounts of dust. The highest concentration of PM₁₀ measured during the experiment was of 17.32 mg/m³ (19.42 mg/m³ of TSP). An OPC-N2 optical particle counter and a TSI DRX 8533 [18] were collocated with a gravimetric sampler, an AirChek2000 (Eighty Four, PA, USA), to calculate their correction factor (Figures 5 and 6). Concentrations from the OPC-N2 and the TSI DRX were obtained directly from the logging files produced by the interface software provided by the manufacturers. Tests were done in a dust chamber of approximately 0.104 m³.

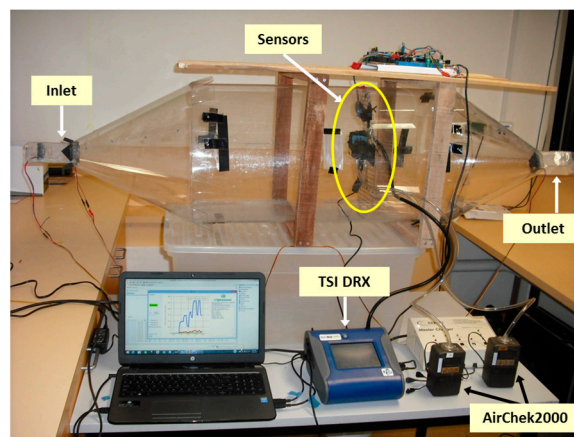


Figure 5. Set up of monitoring devices and dust chamber for calcined alumina calibration tests.

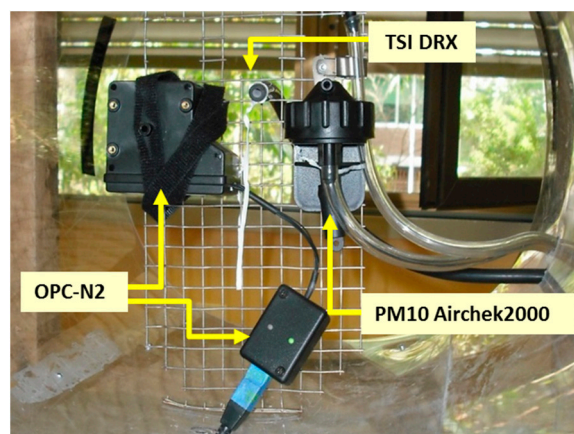


Figure 6. Layout of all monitoring equipment and sensors used to obtain the particle correction factor.

The tests consisted of inducing dust into the chamber with the aid of an axial fan. Three tests were conducted using a regular supply of dust at intervals lasting 3 min for the first, 6 min for the second and 9 min for the third test. In addition to the tests where dust was supplied, two blank tests were conducted to know background dust levels, resulting in an average concentration of $4.82 \mu\text{g}/\text{m}^3$ of PM_{10} . Once all the data was collected, lineal regression analysis was used to calculate the correction factors between devices.

The samples collected with the AirChek2000 were used as the main reference. The filters used by the sampler were sent to a certified laboratory (ALS Environmental, New Castle, Australia) for analysis and determination of calcined alumina PM_{10} concentrations. The correction factors calculated are shown in Table 1. Figure 7 shows the resulting predicted values for the AirChek2000 making use of the particle correction factor calculated with the correlation between the TSI DRX and the air sampler. A coefficient of determination (R^2) of 0.92 for the correlation indicates a good fit between the optical sensor and the air sampler.

Table 1. Correction factors calculated with the analysis of the data from the dust chamber.

| Device | TSI DRX | | AirChek2000 | |
|--------------------------|-------------------|-------|-------------------|-------|
| | Correction Factor | R^2 | Correction Factor | R^2 |
| OPC N2 (airborne module) | 0.342 | 0.62 | 1.362 | 0.73 |
| TSI DRX | NA | NA | 1.312 | 0.92 |

NA = Not Applicable.

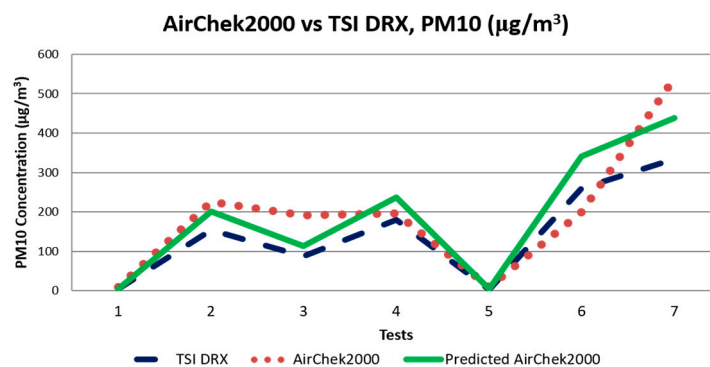


Figure 7. Correlation obtained to calculate the correction factor for the TSI DRX against the gravimetric sampler.

In Figure 8, the process to obtain the correction factors is presented as a flow diagram. This diagram also summarises the other two experiments conducted to validate the readings of the dust monitoring sensors. These experiments are described in the following sections.

2.4. Variable Wind Speed Modeling

In addition to the previous test a variable air speed experiment was designed to study the response of the OPC-N2 with the probe attached using different wind speeds. For this experiment a wind tunnel was built to produce a laminar flow and have control of the air speed changes (Figure 9). The test area of the wind tunnel was 40.0 cm cross section, in which the probe (attached to the OPC-N2), a secondary OPC-N2 without a probe, and the TSI DRX (making use of the conductive tubing), were placed at the same height (15.0 cm from base of test area) for uniformity.

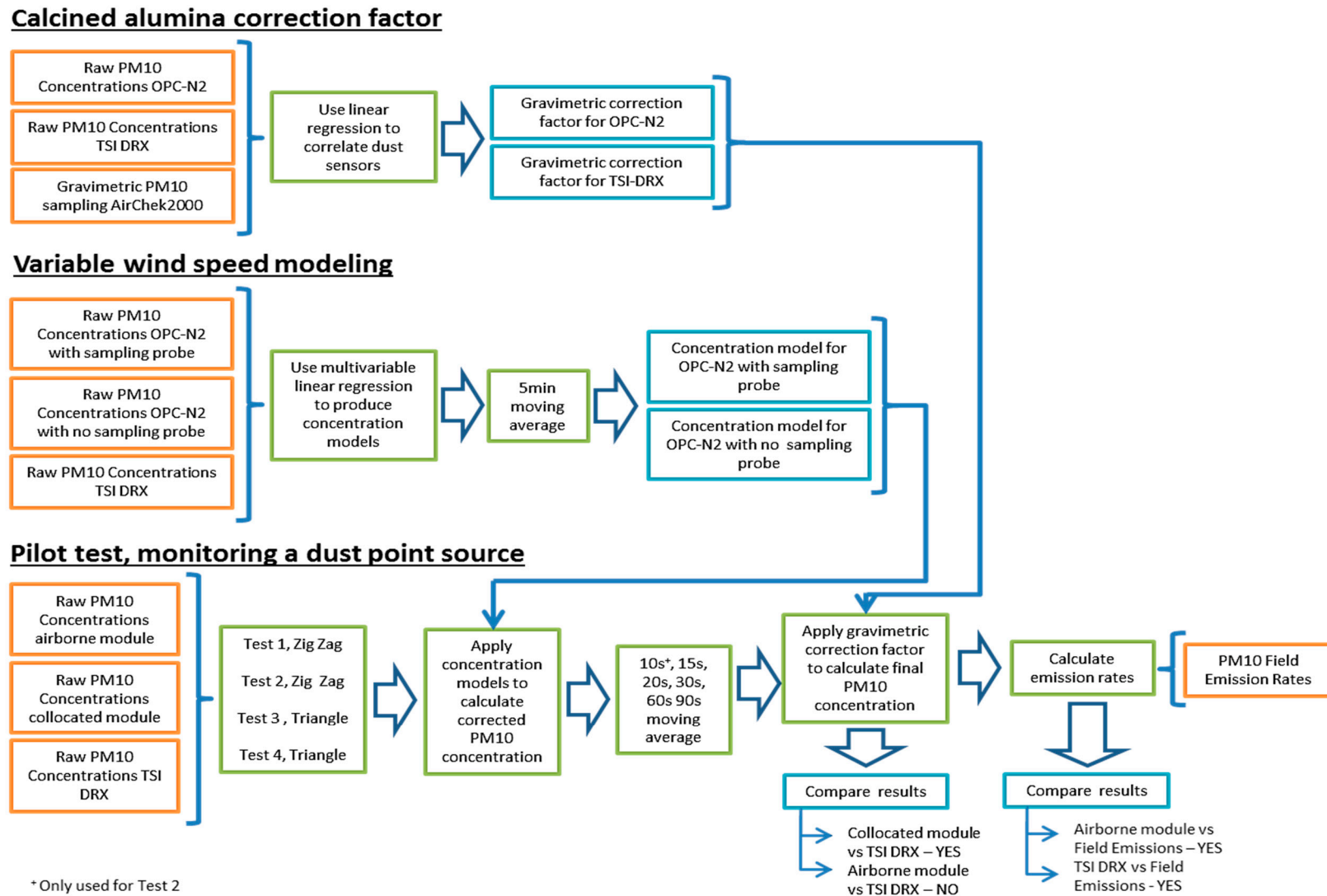


Figure 8. Flow diagram summarizing tests undertaken to validate readings collected with the dust monitoring sensors.

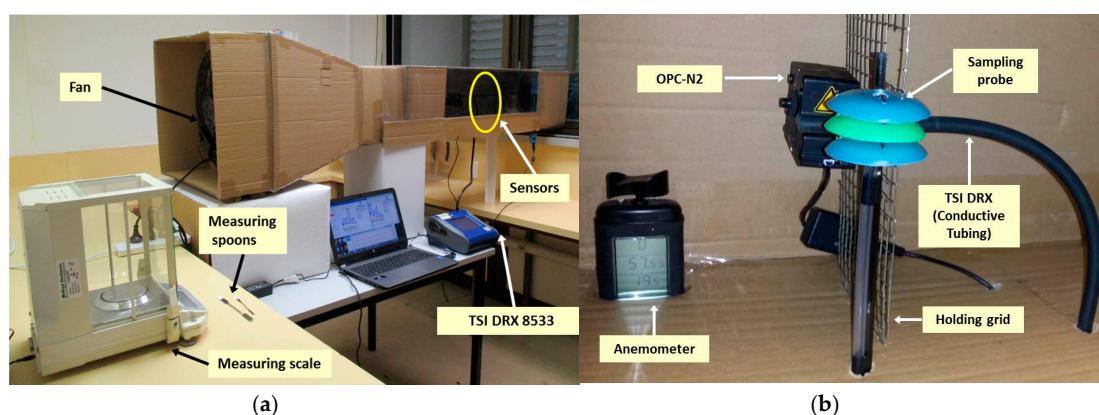


Figure 9. Wind tunnel and equipment used for the variable wind speed tests, (a) overall view of the wind tunnel and equipment used; and (b) test area set with the anemometer, probe, OPC-N2 and TSI DRX.

Four individual experiments were conducted to generate a variable wind speed model. Each experiment used a different wind speed: 1.11 m/s, 1.67 m/s, 3.06 m/s and 3.89 m/s. The air flow was produced with fans and measured with a SkyWatch ATMOS anemometer (Sudbury, UK). Dust particles were supplied using calcined alumina at an approximate rate of 0.015 g every 10 min. The concentration read by the OPC-N2 was logged and reported by the software interface provided by Alphasense Ltd. (Great Notley, Essex, UK).

Two equations were generated out of this experiment, one for the OPC-N2 connected to the probe and one equation for the OPC-N2 which was collocated with the TSI DRX during the flight tests. The resulting coefficients for the airborne module system equation and for the collocated module are shown in Equations (1) and (2) and Table 2:

$$C_{UAV} = (2.118 \times C_R) - (1.175 \times R.H.) - (1.261 \times T) + (1.822 \times U) + 102.082 \quad (1)$$

$$C_{Coll} = (0.197 \times C_R) - (0.623 \times R.H.) - (0.641 \times T) + (1.125 \times U) + 57.292 \quad (2)$$

Table 2. Resulting coefficients for variables of equations for dust monitoring sensors with their *p*-value and confidence level.

| Sensor | Variable | Coefficients | <i>p</i> -Value |
|---|--|--------------|------------------------|
| Airborne module (C_{UAV}) | Intercept | 102.082 | 2.5×10^{-223} |
| | Raw Conc. PM_{10} (C_R , $\mu\text{g}/\text{m}^3$) | 2.118 | ~ 0.0 |
| | Relative Humidity (R.H. %) | -1.175 | 4.2×10^{-235} |
| | Temperature (T, $^{\circ}\text{C}$) | -1.261 | 2.1×10^{-231} |
| | Air speed (U, m/s) | 1.822 | 2.8×10^{-159} |
| | R^2 | 0.55 | NA |
| Collocated module sensor (C_{Coll}) | Intercept | 57.292 | 2.7×10^{-84} |
| | Raw Conc. PM_{10} (C_R , $\mu\text{g}/\text{m}^3$) | 0.197 | ~ 0.0 |
| | Relative Humidity (R.H. %) | -0.623 | 5.6×10^{-79} |
| | Temperature (T, $^{\circ}\text{C}$) | -0.641 | 1.7×10^{-72} |
| | Air speed (U, m/s) | 1.125 | 2.0×10^{-74} |
| | R^2 | 0.66 | NA |

NA = Not Applicable.

The R^2 for both equations using a multivariate linear regression was above 0.5. The airborne module had a coefficient of 0.55 and the collocated module sensor of 0.66. Coefficients with

a p -value < 0.05 (95% confidence) is regarded as statistically significant. Coefficients within a 95% confidence level interval indicate they have a strong influence in the model outcome [19]. For Equations (1) and (2), all variables have a confidence level of approximately 100% (calculated as $1-P$ and expressed as a percentage). The model produced reliable results when used to correct raw data collected from the dust monitoring modules. However, both equations were calculated without the use of the feeding dust rate, due to resulting overestimated values, with errors up to 1000% when applying the model to field data collected during the flight tests. A possible explanation to the high error produced could be that the dust was supplied manually and this could produce less precise measurements than using an automated system. Due to this limitation, the models generated did not include the dust supply variable (W). Nevertheless, results of the calculations were the models were used produced estimates with low percentage errors.

2.5. Particle Size Distribution for Variable Wind Speed Experiment

Research has demonstrated that factors like wind speed, wind direction, air intake angle and shape of the nozzle, among others, affect the proportion of particles that are measured by monitoring devices [12]. Due to these considerations, dust particles should be measured under isokinetic and iso-axial conditions. In order to assess how the particle size distribution of the air sampled would be affected by the probe and different wind speeds, the data was normalised based on a percentage calculated with the average quantity of particles counted in determined size ranges.

Figure 10 shows the normalized data for all wind speeds classified by particle size diameter (using the bins set by the OPC-N2). It is observed that the particles ranging from 0.38–0.54 μm are dominant when using the probe with a percentage difference of 45.5%. These are followed by particles ranging from 0.54–1.59 μm with an average percentage difference of 9.6%. This data indicates that up to a diameter of 2.0 μm , particles are expected to be in higher proportion than particles with larger diameter. Particles with a diameter from 1.59 μm to 10 μm presented a lower difference of 1.0%. Finally, the total difference estimated was of 7.6%. Through this analysis, it is possible to observe that particles up to approximately 2.0 μm are dominant when measuring with the sampling probe suggested in the methodology. However, results of the modeling estimates suggest that the effect of the probe can be corrected to obtain comparable results to field values.

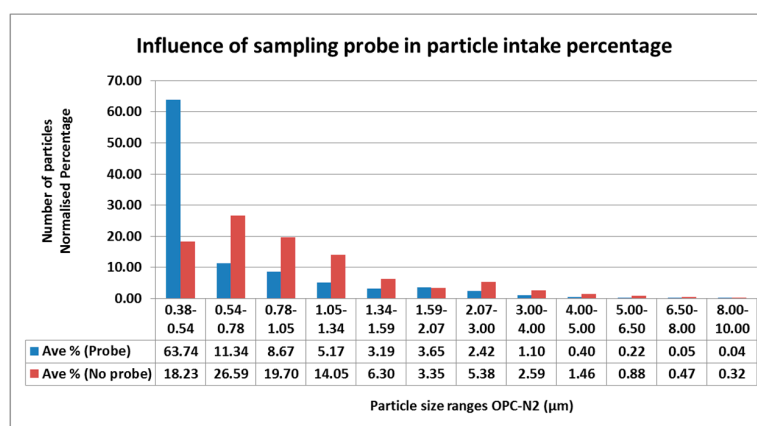


Figure 10. Influence of the sampling probe used with the OPC-N2 over particle counting readings per particle size range.

Figure 11a,b shows the impact that variable wind speeds produce in the OPC-N2 by itself and with the sample probe attached. The distribution of particles counted by the sensor follows the same pattern that was observed in Figure 10. The average difference between wind speeds per bin is higher when not using the sampling probe, with difference of 10.3% in particles within 0.38–0.54 μm . The highest difference was also observed in the particle range from 0.38–0.54 μm when using the sampling probe.

Impacts by the probe were expected, nevertheless as stated previously, by using the models it was possible to correct these effects in the sample intake and obtain results with low errors.

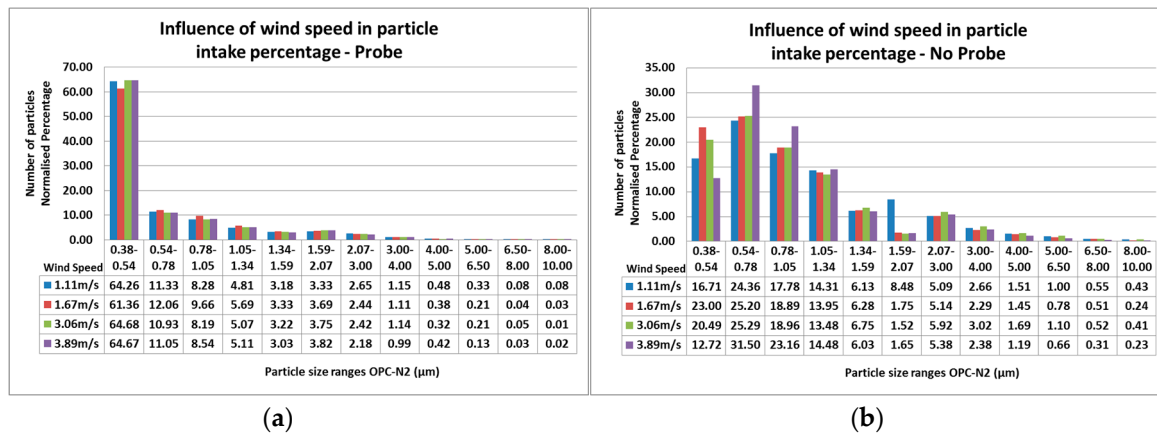


Figure 11. Influence of wind speed variation over particle counting readings per particle size range for (a) OPC-N2 with a sampling probe attached; and (b) OPC-N2 without a sampling probe.

For the TSI DRX, the concentration for different particle size fractions was analysed. Particle fractions considered for the analysis were: PM_{1.0}, PM_{2.5}, PM_{4.0} (respirable according to ISO 12103-1, A1), and PM₁₀. Figure 12 shows the averaged raw concentration per wind speed used. It is observed that the greatest difference between readings of a particle size with different wind speeds is produced by PM_{1.0} and PM₁₀ fractions with values approximately 50.0% greater than the minimum average reading. Lower average concentrations were constant for wind speeds of 1.67 m/s and 3.89 m/s, and greater for wind speeds of 1.11 m/s and 3.89 m/s. These constant patterns observed in the different particle size fractions, produced a better outcome when generating the models.

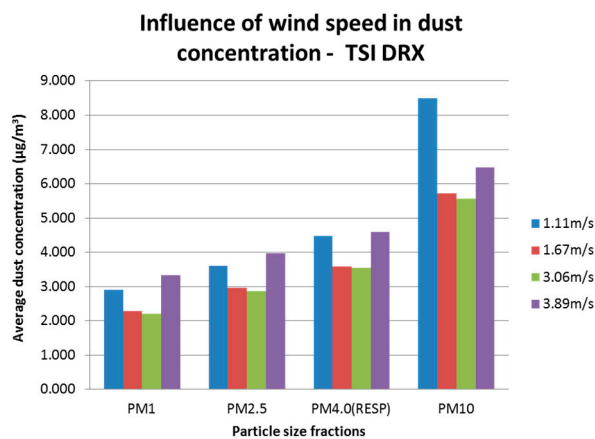


Figure 12. Influence of wind speed variation over dust concentration (raw) for different particle size fractions reported by the TSI DRX.

3. Flight Tests, Monitoring a Dust Point Source

An experiment was designed to collect experimental data similar to that obtained at open pit mine sites from activities such as hauling, stockpiling, blasting, etc. These activities are area sources or fugitive emissions, however to create an experimental site in which variables could be easily monitored and controlled, a stack emission was the most feasible option. The experiment consisted of using a 5.0 m stack (5.0 cm diameter), through which calcined alumina was supplied and expelled with the use of an electric leaf blower. Due to the dimensions of the stack, it was not possible to sample PM₁₀

concentration readings from inside the stack isokinetically. However, this contributed in making the scenario similar to a real fugitive emission, measuring directly with the multi-rotor UAV from the plume generated. A 5.0 m tall “monitoring tower” was installed at a distance of 10.0 m downwind from the stack. At the top of the tower, a TSI DRX and a duplicate of the dust monitoring module were installed. This tower was used to compare dust concentration readings from stationary devices against airborne data (Figure 13).

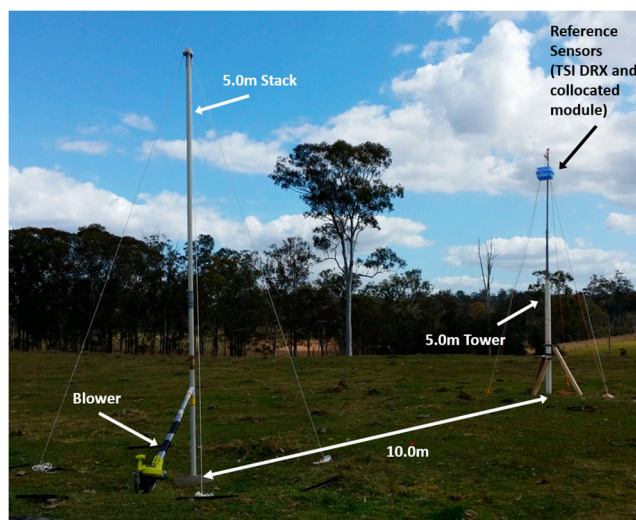


Figure 13. Experimental set up for the flight tests with the source stack and the monitoring tower.

A variable quantity of calcined alumina was blown out of the stack at approximately 30 s intervals. The total weight of powder expelled per interval was measured using an electronic balance (ELB600, Shimadzu, Kyoto, Japan). In-situ meteorological data was collected with an Oregon Scientific WMR200 weather station placed at the test site. Status and readings from the two modular sensors were followed via the radio link and controlled using SSH connection. In order to use the data produced by all the monitoring devices (dust monitoring modules, TSI DRX, and meteorological station) it was necessary to synchronise their datasets by programming the weather station and the TSI DRX. However, the dust monitoring modules had to be adjusted by internet clock link using WiFi and a portable hot-spot connection.

3.1. Procedure for Flight Tests 1 and 2

In Alvarado et al. (2015), a circular flight pattern was used to scan the area and create a grid to characterize the dust plume. However, for this flight test a different grid was designed for this test due to the small size of the plume and the endurance of the UAV, which was of approximately 10 min. Two grids were designed for the first two tests. The grids were oriented northwest, downwind from the stack (source), and followed a zig-zag path around the monitoring tower (Figure 14).

For Test 1 the multi-rotor UAV was programmed to follow a predetermined path using the “Tower” mobile application from 3DR, hovering at waypoints for 15 s. The pattern was repeated at heights of 7.0 m and 9.0 m covering an area of 225.0 m² approximately. The hovering periods were estimated on 15 s lapses according to the analysis of data produced in the laboratory during the calibration tests. This was estimated by averaging concentrations at different time periods and obtaining their correlation (linear association) using the Pearson product-moment correlation coefficient (r). Making a plot of the coefficients, it was possible to choose a time period that could reduce noise in the readings produced by the OPC-N2, and also allowed enough readings to be collected during the 10 min flights (Figure 15).

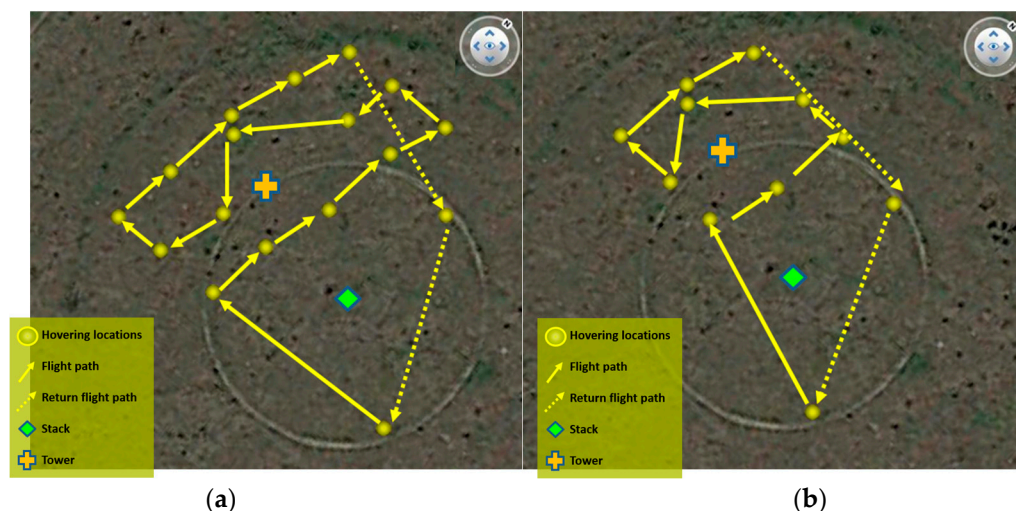


Figure 14. Characterizing zig-zag grids designed for (a) Test 1 and (b) Test 2.

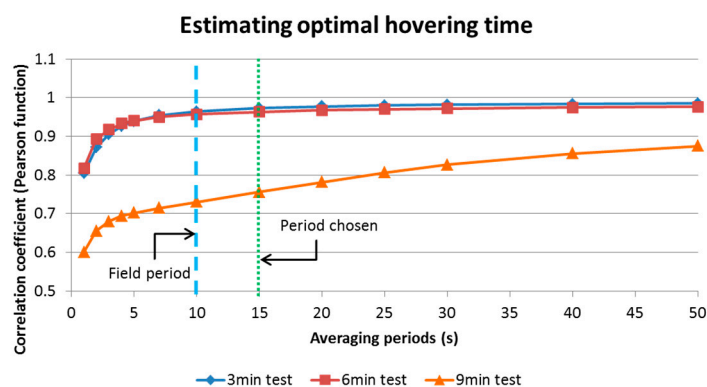


Figure 15. Calculated correlation coefficients (r) for different averaging periods of PM_{10} concentrations for three sets of tests.

However, once in the field it was observed that the battery did not last long enough to cover the flight programmed. A second grid was designed for Test 2. For this test, the multi-rotor UAV hovered at the waypoints for 10 s, repeating the pattern at heights of 7.0 m, 9.0 m and 11.0 m. The grid covered an approximate area of 130.0 m². For this experiment, the OPC-N2 software interface was not used to log the resulting concentration. A custom made program was written to record the data from all sensors that integrated the dust monitoring module. The OPC-N2 provided the particles counted for 16 predetermined bins, from which only 12 were considered due to the particle size targeted (PM_{10}) (see Table 3).

To calculate the concentration for each reading produced by OPC-N2, the total bin volume of particles was estimated and multiplied by the particle density with a value of $1.65 \times 10^{12} \mu\text{g}/\text{m}^3$ [11] to determine the total dust mass. The total mass was divided by the total volume of air sampled to calculate the final concentration. The total volume of air sampled was estimated with the sampling period and the sample flow rate (data provided by the sensor). Sampling period was set to 1 s as all data was averaged to match the sampling period of the TSI DRX.

Table 3. Bins considered to calculate PM₁₀ concentrations and their boundaries according to particle diameter.

| Bins | Bin Low Boundary, Particle Diameter (µm) | Bin High Boundary, Particle Diameter (µm) |
|------|--|---|
| 0 | 0.38 | 0.54 |
| 1 | 0.54 | 0.78 |
| 2 | 0.78 | 1.05 |
| 3 | 1.05 | 1.34 |
| 4 | 1.34 | 1.59 |
| 5 | 1.59 | 2.07 |
| 6 | 2.07 | 3.00 |
| 7 | 3.00 | 4.00 |
| 8 | 4.00 | 5.00 |
| 9 | 5.00 | 6.50 |
| 10 | 6.50 | 8.00 |
| 11 | 8.00 | 10.00 |

3.2. Procedure for Flight Tests 3 and 4

Tests 3 and 4 followed a different flight strategy with the objective to only collect data flying next to the monitoring tower to determine the best way to validate readings from the dust monitoring module. These tests consisted of hovering close to the sides and behind the collocated devices in a triangular pattern. The flight was made in hover (loiter) mode and controlled manually. In total 4 flights were undertaken, two with a zig-zag pattern and two with a triangle pattern, each one of them with a total duration of 10 min approximately. Table 4 summarizes the characteristics of the four tests conducted for this section.

Table 4. Characteristics of the four flight tests conducted.

| Test | Pattern | Flight Mode | Hovering Periods (s) | Approximate Area Covered (m ²) | Heights Flown (m) |
|------|----------|-------------------|----------------------|--|-------------------|
| 1 | Zig-Zag | Auto (programmed) | 10 | 225.0 | 7, 9 |
| 2 | Zig-Zag | Auto (programmed) | 15 | 130.0 | 7, 9, 11 |
| 3 | Triangle | Manual | Variable | 10.6 | 5 m approx. |
| 4 | Triangle | Manual | Variable | 10.2 | 5 m approx. |

4. Flight Test Results

4.1. Results and Analysis of Data Collected with the Collocated Module

Linear multivariate regression was used to observe the relation between variables and obtain the correlation between the TSI DRX and the two dust monitoring modules. The variables included in the analysis were: air speed (m/s), relative humidity (%), temperature (C), raw concentration (µg/m³), and emission rate (µg/s). When the raw data was used as an input no correlation was observed. However, a better correlation was found by using the moving average of the concentrations. This was done in a similar way to how the OPC-N2 reports readings in its standalone interface (provided by Alphasense Ltd.) using a 5 min moving average.

For all tests, moving averages of 15 s, 20 s and 30 s were used to determine the best fit for the linear multivariate regression (Section 2.3). This resulted in having 20 s–30 s periods with the highest correlations with R² of up to 0.8 for the collocated module. Tables 5 and 6 presents a summary of the different approaches used to correlate data collected with the TSI DRX and the collocated module in the four tests analysed.

Table 5. Models generated from data collected with the TSI DRX and the collocated module using corrected concentrations and field data for Tests 1 and 2.

| Variables | Corrected Concentration Test 1 | | | Raw Concentration Test 1 | | | Corrected Concentration Test 2 | | | Raw Concentration Test 2 | | |
|---|--|----------------|----------------|------------------------------|-------------------------------|-------------------------------|--------------------------------|-------------------------------|------------------------------|------------------------------|-------------------------------|------------------------------|
| | Coefficients for Different Moving Averages | | | | | | | | | | | |
| | 15 | 20 | 30 | 15 | 20 | 30 | 15 | 20 | 30 | 15 | 20 | 30 |
| Intercept | 3527.905 | 3806.125 | 4339.276 | 2916.909 | <i>1225.689</i> | <i>−32.446</i> | <i>−734.98</i> | <i>−670.73</i> | <i>−413.48</i> | <i>−311.39</i> | <i>−279.21</i> | <i>−194.93</i> |
| Air speed (m/s) | <i>−28.921</i> | <i>−15.235</i> | <i>8.638</i> | <i>−32.403</i> | <i>−20.484</i> | <i>−11.931</i> | <i>−5.052</i> | <i>−3.76</i> | <i>−1.56</i> | 0.53 | 0.74 | 0.84 |
| Rel. Humidity (%) | <i>−53.060</i> | <i>−65.410</i> | <i>−84.957</i> | <i>−17.782</i> | 0.900 | 14.214 | 6.08 | 4.89 | 1.12 | 2.74 | 2.43 | 1.07 |
| Temperature (°C) | <i>−63.276</i> | <i>−55.941</i> | <i>−46.391</i> | <i>−78.939</i> | <i>−46.455</i> | <i>−21.134</i> | 15.65 | 15.79 | 13.55 | 7.37 | 6.60 | 5.58 |
| Conc. PM ₁₀ (µg/m ³) | 25.568 | 25.720 | 23.828 | 5.347 | 6.200 | 6.584 | 4.85 | 3.69 | 1.40 | 1.77 | 1.88 | 1.88 |
| Emission Rate (µg/s) | 0.002 | 0.002 | 0.003 | <i>1.0 × 10^{−4}</i> | <i>−9.5 × 10^{−5}</i> | <i>−2.0 × 10^{−4}</i> | <i>3.0 × 10^{−4}</i> | <i>3.55 × 10^{−5}</i> | <i>4.0 × 10^{−4}</i> | <i>1.1 × 10^{−4}</i> | <i>9.96 × 10^{−5}</i> | <i>1.5 × 10^{−4}</i> |
| R ² | 0.61 | 0.64 | 0.61 | 0.67 | 0.81 | 0.89 | 0.46 | 0.54 | 0.59 | 0.63 | 0.74 | 0.80 |

Note: Numbers in *italics* indicate a confidence level lower than 95%.

Table 6. Models generated from data collected with the TSI DRX and the collocated module using corrected concentrations and field data for Tests 3 and 4.

| Variables | Corrected Concentration Test 3 | | | Raw Concentration Test 3 | | | Corrected Concentration Test 4 | | | Raw Concentration Test 4 | | |
|---|--|------------------|------------------|--------------------------|------------------|------------------|--------------------------------|------------------------------|-------------------------------|------------------------------|------------------------------|------------------------------|
| | Coefficients for Different Moving Averages (s) | | | | | | | | | | | |
| | 15 | 20 | 30 | 15 | 20 | 30 | 15 | 20 | 30 | 15 | 20 | 30 |
| Intercept | <i>−3205.983</i> | <i>−2758.832</i> | <i>−2383.600</i> | <i>−2471.678</i> | <i>−2031.929</i> | <i>−1727.493</i> | <i>−2603.777</i> | <i>−2453.5</i> | <i>−1930.551</i> | <i>−2244.417</i> | <i>−2164.951</i> | <i>−1773.315</i> |
| Air speed (m/s) | <i>−70.601</i> | <i>−60.273</i> | <i>−48.545</i> | <i>−58.775</i> | <i>−49.292</i> | <i>−39.101</i> | <i>−9.773</i> | 2.415 | <i>−8.908</i> | 3.379 | <i>3.002</i> | 2.615 |
| Rel. Humidity (%) | 26.778 | 24.405 | 24.722 | 17.740 | 15.217 | 16.573 | 14.641 | 13.608 | 10.115 | 9.471 | 8.975 | 6.509 |
| Temperature (°C) | 83.074 | 67.556 | 52.224 | 80.139 | 64.912 | 48.573 | 69.263 | 65.052 | 50.422 | 71.857 | 69.719 | 58.798 |
| Conc. PM ₁₀ (µg/m ³) | 16.947 | 16.412 | 13.282 | 80.139 | 3.383 | 2.839 | 14.059 | 14.349 | 14.679 | 2.813 | 2.916 | 3.058 |
| Emission Rate (µg/s) | <i>−0.003</i> | <i>−0.002</i> | <i>−0.001</i> | 3.396 | <i>−0.002</i> | <i>−0.002</i> | <i>3.0 × 10^{−4}</i> | <i>3.0 × 10^{−4}</i> | <i>8.66 × 10^{−5}</i> | <i>4.0 × 10^{−4}</i> | <i>3.0 × 10^{−4}</i> | <i>2.0 × 10^{−4}</i> |
| R ² | 0.41 | 0.46 | 0.52 | 0.41 | 0.47 | 0.54 | 0.42 | 0.47 | 0.54 | 0.44 | 0.49 | 0.57 |

Note: Numbers in *italics* indicate a confidence level lower than 95%.

Equations (1) and (2) were used to correct the raw concentrations. It is observed that the R^2 values for correlations made with corrected concentrations, when compared against R^2 values from regressions made with raw concentrations, were very close. This indicated that a model can be generated without making the correction. However, the use of corrected values was necessary when calculating emission rates. Figure 16 presents the values predicted using the model generated for Test 2, compared with the readings from the TSI DRX. An R^2 of 0.74 (moving average of 20 s) was obtained with linear regression. By using a moving average of 30 s the R^2 can be improved to 0.8, reducing greatly the noise observed in the corrected values. Such R^2 indicates that the sensor module design can obtain reliable PM_{10} readings comparable to a TSI DRX in the field when placed at the monitoring tower.

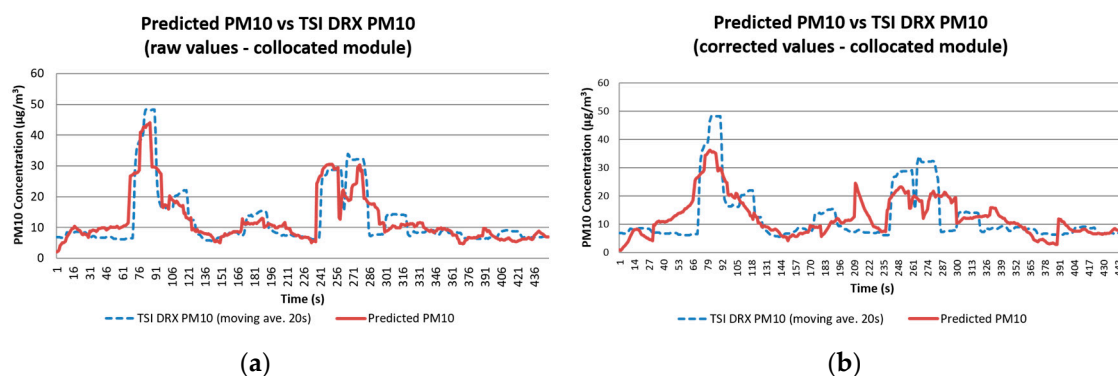


Figure 16. Comparison between PM_{10} concentration readings obtained with the TSI DRX and the predicted values calculated using the models generated for Test 2 with (a) raw values; and (b) corrected data.

From Tables 4 and 5 and comparing R^2 from Tests 1 and 2 against Tests 3 and 4, it was observed that Tests 1 and 2 have higher values. This could indicate that the multi-rotor UAV was flown closer to the tower, affecting the natural flow of the plume across the reference devices.

4.2. Comparison of Average Concentrations, Airborne Module Results Tests 2

Table 7 presents the correlation between the data collected with the airborne module for Test 2 and the TSI DRX. A linear multivariate regression was also performed for this dataset. The data is presented as an example to show that models created for the airborne module whilst traveling to different waypoints during the test do not have a high correlation with data collected with the TSI DRX. A statistical analysis was conducted to investigate if the model could be improved by including other variables that affect the dispersion of dust, such as wind direction and UTM coordinates of the UAV. However, when the model was generated and used, the resulting predicted values were not correlated and produced a R^2 of 0.1–0.2.

Figure 17 presents the results of the concentrations calculated using the corrected concentration and raw field values. The comparison between TSI DRX values and the predicted TSI DRX values presents noise, and their R^2 indicates that 40%–60% of the data is represented by the model created. For Figure 17a with corrected values, errors were identified due to their negative value, and removed. The regression was recalculated obtaining an R^2 of 0.53. This value is closer to the coefficient obtained with the regression generated with the raw concentration values.

Table 7. Models generated with data collected with the TSI DRX and experimental modules using corrected concentrations and field data for Test 2.

| Variable | Corrected Concentration | | | Raw Concentration | | |
|---|---|-------------------------|--------|-------------------|-------------------------|--------|
| | Coefficients for Different Moving Average (s) | | | | | |
| | 15 | 20 * | 30 | 15 | 20 * | 30 |
| Airborne module | | | | | | |
| Intercept | 296.29 | 319.96 | 214.72 | 182.79 | 221.04 | 182.19 |
| Air speed (m/s) | -0.46 | -0.77 | -1.39 | -1.91 | -1.47 | -0.67 |
| Rel. Humidity (%) | -3.30 | -3.58 | -2.62 | -2.35 | -2.81 | -2.44 |
| Temperature (°C) | -3.66 | -4.30 | -3.01 | -2.32 | -3.06 | -2.47 |
| Conc. PM ₁₀ (µg/m ³) | -1.4 | -1.11 | -0.04 | -4.39 | -3.04 | -1.72 |
| Dist. to source (m) | * | * | * | 0.63 | 0.70 | 0.61 |
| Emission Rate (µg/s) | 0.00018 | 0.0002 | 0.0002 | 0.0002 | 0.0002 | 0.0002 |
| R ² | 0.43 | 0.49 [†] /0.54 | 0.45 | 0.45 | 0.52 [†] /0.56 | 0.51 |

Note: Numbers in *italics* indicate a confidence level lower than 95%. * Distance value not used to obtain the best fit of the equation. † R² value before errors were eliminated.

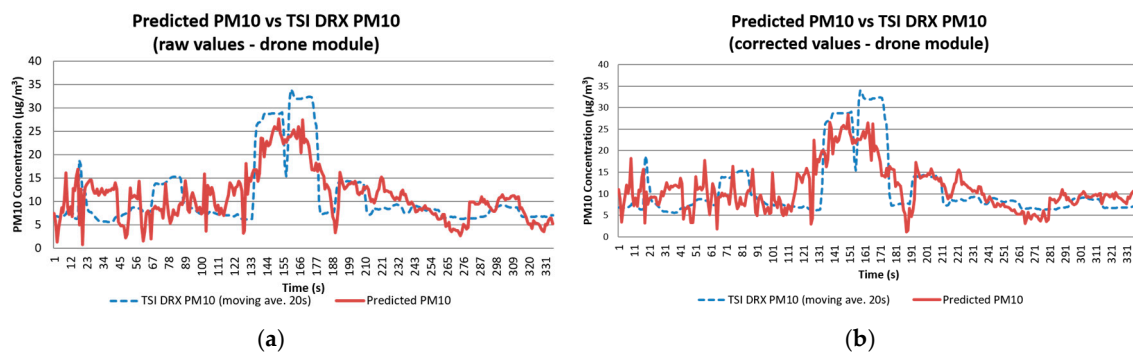


Figure 17. Comparison between PM₁₀ concentration readings obtained with the TSI DRX and the predicted values calculated for Test 2 using the models generated with (a) raw values; and (b) corrected data.

The confidence level for all the variables used in the correlation of the raw data, was above 95%, indicating their high significance in the model to calculate dust emission concentrations. It was observed that for the emission rate field values, even though they had a value greater than 95%, by excluding this value from the model equation the resulting corrected values (used to calculate concentrations or emission rates) had a better fit. As mentioned before, this variation could be due to manual recording of the feeding rate.

4.3. Comparison of Average Emission Rates, Airborne Module Results Tests 1 and 2

Analysis of the zig zag dataset collected with the airborne module required isolating groups of waypoints corresponding to the 10 s and 15 s hovering periods programmed, and then averaging them by 10 s and 15 s, respectively. Once again, the moving average of the TSI DRX values together with the corrected values of the airborne module were calculated for periods of 10 s (only Test 2), 15 s, 20 s and 30 s. The percentage error between the reference device and the airborne module was calculated, to determine if the corrected concentration would be representative for the analysis. A total of 23 averaged hovering positions were used for Test 1 (Figure 18). Two thirds of 24 hovering positions collected were used from Test 2 (Figure 19). The hovering positions not considered for analysis were left out due to errors in the logging of data with the airborne module.

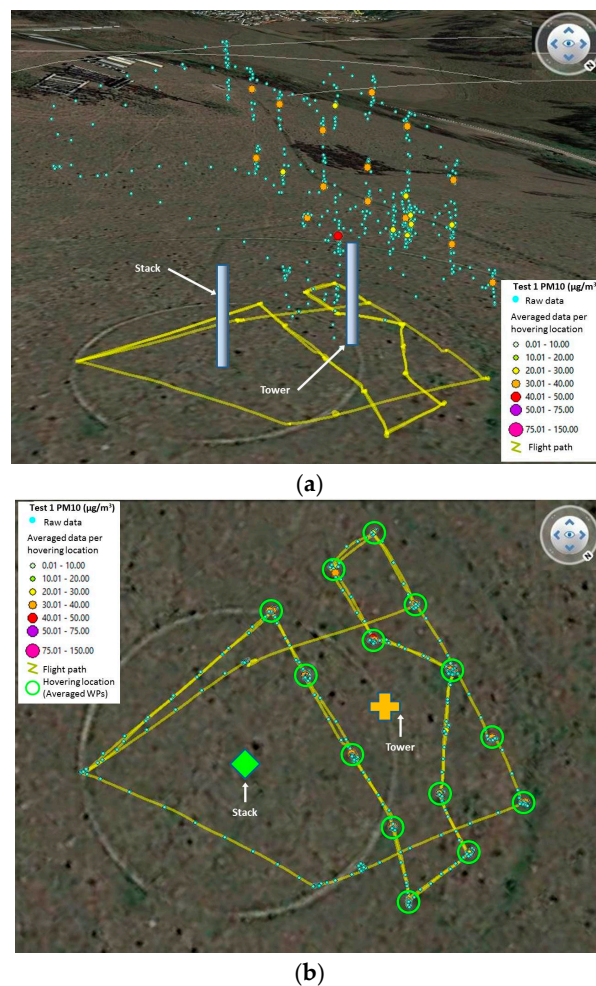


Figure 18. Field data collected for Test 1 with the airborne module before and after processing, (a) 3D view; and (b) top view with averaged locations indicated (repeated per height programmed).

As discussed in Section 4.2, concentrations of the airborne module are not considered comparable to the TSI DRX in Tests 1 and 2. Therefore, to validate the field values obtained, the average emission rate for the TSI DRX and the airborne module were calculated. Table 8 presents the results of the emission rates obtained with the readings of the TSI DRX and the corrected values of the airborne module. The emission rate was calculated using the general Gaussian equation for sources at ground level [20]:

$$Q = C \times 2\pi \times \sigma_y \times \sigma_z \times U, \quad (3)$$

With Q being the emission rate in $\mu\text{g}/\text{s}$, C is the concentration in $\mu\text{g}/\text{m}^3$, σ_y and σ_z the dispersion factors for a puff emission, and U the wind speed in m/s . A Gaussian model was used for this investigation due to its simplicity and extensive use for different modeling scenarios [21–23]. Background levels were estimated by reviewing the data from all flight tests and checking the minimum concentrations registered, which ranged from $0.0 \mu\text{m}/\text{m}^3$ to $5.6 \mu\text{m}/\text{m}^3$.

The values collected with the TSI DRX in Test 1 presented errors ranging from 8.9% to 192.9% when compared against an estimated average field emission rate of $20,449.15 \mu\text{g}/\text{s}$.

The lower value corresponded to a moving average of 20 s. The percentage errors produced by comparing the airborne module against the field emission rate have smaller differences ranging from 8.9% to 9.8%. The lowest percentage error corresponds to the emission rate calculated with a moving average of 90s. A high variability in the emission rates was observed between values calculated with the TSI DRX and airborne module.

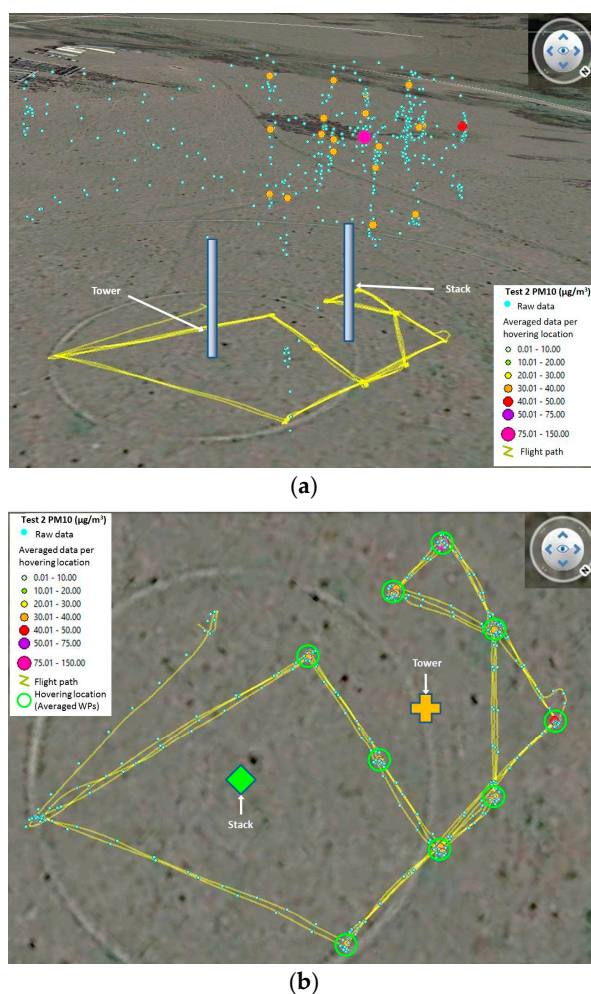


Figure 19. Field data collected for Test 2 with the airborne module before and after processing, (a) 3D view; and (b) top view with averaged locations indicated (repeated per height programmed).

Calculations of the emission rate for Test 1 were performed considering an atmospheric stability class D. The average wind speed of 3.0 m/s observed in this Test and this should correspond to a stability class B. However, wind speed values were measured at a height of 3.0 m (instead of using the standard height of 10.0 m), and friction with the ground would slow the wind down resulting in a different atmospheric stability. Considering this situation, a stability class D, better described the atmospheric conditions. Emission rates calculated with stability class B parameters produced errors ranging from 150% to 1333%, hence being considered not applicable for the analysis and interpretation of data.

Emission rates were calculated using stability class D parameters, having an average wind speed of 5.3 m/s for Test 2. Error values varied from 144.6% to 181.7% between emission rates calculated with the concentrations from the TSI DRX and the airborne module (Table 8). However, when comparing the emission rates against the average field emission rate of $15,383.67 \mu\text{g}/\text{m}^3$, the airborne module had percentage errors ranging from 18.5% to 28.4%. Even though these values overestimated the field value, they are closer than the emissions calculated using the values obtained by the TSI DRX located in the tower, ranging from 47.8% to 56.1%.

The raw values of the airborne module, for Tests 1 and 2, presented higher errors in their emission rates. This indicated that the correction made to the readings with the model developed in the laboratory, produced a better fit, having a higher correlation between the real value and the value obtained with the airborne module.

Table 8. Summary of concentrations and emission rates calculated for Tests 1 and 2 with their percentage error.

| Measurement | Average Concentration ($\mu\text{g}/\text{m}^3$) | Conc. Error (%), TSI DRX vs. Airborne Module | Emission Rate ($\mu\text{g}/\text{s}$) | Emission Error (%), Calculated Value vs. Field Value | Test 1 | | Test 2 | |
|------------------------|--|--|--|--|--|--|--|--|
| | | | | | Average Concentration ($\mu\text{g}/\text{m}^3$) | Conc. Error (%), TSI DRX vs. Airborne Module | Emission Rate ($\mu\text{g}/\text{s}$) | Emission Error (%), Calculated Value vs. Field Value |
| TSI DRX | | | | | | | | |
| Raw data | 18.579 | NA | 10,646.214 | 47.9 | 14.339 | NA | 7213.353 | 53.1 |
| 10 s Mov. Ave. | NA * | NA | NA * | NA * | 13.766 | NA | 6924.893 | 54.9 |
| 15 s Mov. Ave. | 29.165 | NA | 16,712.084 | 18.27 | 13.874 | NA | 6979.260 | 54.6 |
| 20 s Mov. Ave. | 32.500 | NA | 18,623.284 | 8.93 | 13.504 | NA | 6793.132 | 55.8 |
| 30 s Mov. Ave. | 39.484 | NA | 22,625.078 | 10.64 | 13.414 | NA | 6747.759 | 56.1 |
| 60 s Mov. Ave. | 93.055 | NA | 53,322.700 | 160.76 | 14.377 | NA | 7232.394 | 52.9 |
| 90 s Mov. Ave. | 104.552 | NA | 59,911.108 | 192.98 | 15.952 | NA | 8024.461 | 47.8 |
| Airborne module | | | | | | | | |
| Raw data | 3.201 | 82.7 | 1834.189 | 91.0 | 1.549 | 89.29 | 779.523 | 94.9 |
| 10 s Mov. Ave. Corr. | NA * | NA * | NA * | NA * | 36.245 | 163.39 | 18,232.334 | 18.5 |
| 15 s Mov. Ave. Corr. | 32.336 | 10.9 | 18,529.561 | 9.4 | 36.373 | 162.2 | 18,296.784 | 18.9 |
| 20 s Mov. Ave. Corr. | 32.129 | 1.1 | 18,410.932 | 9.8 | 36.559 | 170.7 | 18,390.435 | 19.6 |
| 30 s Mov. Ave. Corr. | 32.357 | 18.8 | 18,541.318 | 9.3 | 37.782 | 181.7 | 19,005.532 | 23.5 |
| 60 s Mov. Ave. Corr. | 32.382 | 65.2 | 18,555.661 | 9.3 | 39.258 | 173.1 | 19,748.159 | 28.4 |
| 90 s Mov. Ave. Corr. | 32.487 | 68.9 | 18,615.632 | 8.9 | 39.012 | 144.7 | 19,624.319 | 27.6 |

NA = Not Applicable. Mov. Ave. = Moving Average. Mov. Ave. Corr. = Moving Average of Corrected data from the airborne module. * A Moving Average of 10s was calculated only for Test 3 as the hovering period for each way point programmed was of 10 s, for Test 1 the hovering period was of 15 s.

4.4. Comparison of Emission Rates, Airborne Module Results for Tests 3 and 4

The triangle flight pattern tests required different approach for their analysis. The main objective was to collect as much data close to the TSI DRX and the collocated module by flying to the sides and behind the monitoring devices. Once the data was collected, it was grouped into high density areas. This resulted in six areas for Test 3 and five areas for Test 4 (Figures 20 and 21). The moving average of all values was calculated considering intervals of 15 s, 20 s, 30 s, 60 s and 90 s. Then, each area was isolated and averaged per hovering period. This was done to determine the corrections with least error against the TSI DRX data. After observing the data in Test 4, it was considered necessary to eliminate an area located west of the devices and another located south of them, due to a high amount of blank readings (Figure 21). The other two areas located west and south of the devices presented very few blank logging records. All other areas selected for Tests 3 and 4 did not present drop-outs of sensor packets. The number of waypoints averaged per area defined in both tests ranged from 25 to 175, each waypoint representing a reading taken in one second.

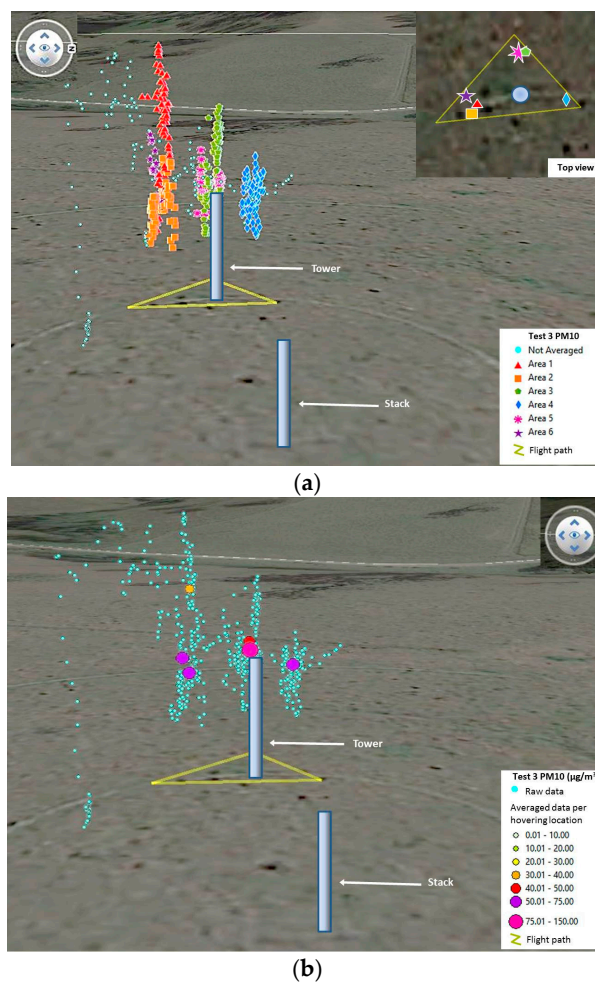


Figure 20. 3D visualization for Test 3, showing (a) the waypoints grouped per high density areas; and (b) the raw data and waypoints used once averaged per area.

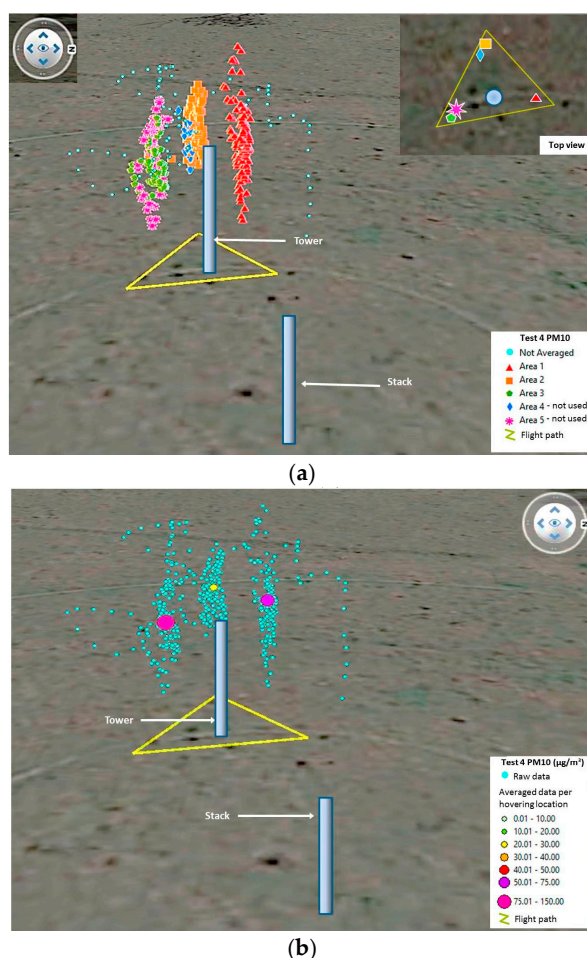


Figure 21. 3D visualization for Test 4, showing (a) the waypoints grouped per high density areas; and (b) the raw data and way points used once averaged per area.

Table 9 shows the resulting concentrations and emission rates obtained with the TSI DRX and calculated with the airborne module, as well as the calculated emission rate and their corresponding percentage error. The average estimated field value against which the airborne module values are compared was of 22,589.09 $\mu\text{g}/\text{s}$ for Test 3 and of 50,864.86 $\mu\text{g}/\text{s}$ for Test 4. For both tests, atmospheric stability class D was used in the calculation of emission rates, with average wind speeds of 5.2 m/s for Test 3 and of 5.1 m/s for Test 4. From Table 9 can be determined, in a similar way to Tests 1 and 2, that the values that produce the highest errors in the data are the raw values, indicating that the use of the moving average and the correction equation improved the precision of the readings considerably.

Emission rates calculated with the airborne module obtained errors as low as 1.2% in Test 3, and had the highest error in Test 4 at 43.3%. Percentage errors observed in Test 4 are considerably higher than errors presented by Test 3. This could be due mainly to the amount of data available to calculate a final emission rate with Test 3 having a complete dataset, and Test 4 having many points not considered due to errors in the log files. However, even with less data available the airborne module had a minimum error of 40.8% which is similar to errors obtained in the other tests with the TSI DRX, indicating data can still be considered useful.

Average concentrations obtained with the TSI DRX and the airborne module for both tests, have similar errors for moving averages of 15 s to 30 s, with higher variability in the 60 s and 90 s periods. This could be due to the lower amount of information in Test 4. The same behavior was also observed in Tests 1 and 2. This can lead us to the conclusion that 15 s to 30 s periods can be chosen as the preferred time periods.

Table 9. Summary of concentrations and emission rates calculated for the triangle test with their percentage error.

| Measurement | Average Concentration ($\mu\text{g}/\text{m}^3$) | Conc. error (%), TSI DRX vs. Airborne Module | Emission Rate ($\mu\text{g}/\text{s}$) | Emission error (%), Calculated Value vs. Field Value | Average Concentration ($\mu\text{g}/\text{m}^3$) | Conc. Error (%), TSI DRX vs. Airborne Module | Emission Rate ($\mu\text{g}/\text{s}$) | Emission Error (%), Calculated Value vs. Field Value |
|------------------------|--|--|--|--|--|--|--|--|
| | Test 3 | | | | Test 4 | | | |
| TSI DRX | | | | | | | | |
| Raw data | 67.263 | NA | 25,328.05 | 12.1 | 76.610 | NA | 37,452.015 | 26.4 |
| 15s Mov. Ave. | 57.832 | NA | 21,777.01 | 3.6 | 55.746 | NA | 27,252.411 | 46.4 |
| 20s Mov. Ave. | 50.777 | NA | 19,120.22 | 15.4 | 54.135 | NA | 26,464.745 | 47.9 |
| 30s Mov. Ave. | 43.630 | NA | 16,428.88 | 27.3 | 51.831 | NA | 25,338.413 | 50.2 |
| 60s Mov. Ave. | 36.639 | NA | 13,796.32 | 38.9 | 51.197 | NA | 25,028.419 | 50.8 |
| 90s Mov. Ave. | 34.733 | NA | 13,078.78 | 42.1 | 48.600 | NA | 23,758.769 | 53.3 |
| Airborne module | | | | | | | | |
| Raw data | 9.2702 | 86.2 | 3490.715 | 84.5 | 8.464 | 88.95 | 4137.911 | 91.9 |
| 15s Mov. Ave. Corr. | 61.399 | 06.2 | 23119.81 | 2.3 | 60.952 | 9.34 | 29,797.558 | 41.4 |
| 20s Mov. Ave. Corr. | 59.276 | 16.7 | 22320.61 | 1.2 | 61.017 | 12.71 | 29,829.075 | 41.4 |
| 30s Mov. Ave. Corr. | 55.987 | 28.3 | 21081.93 | 6.7 | 61.204 | 18.08 | 29,920.592 | 41.2 |
| 60s Mov. Ave. Corr. | 55.455 | 51.4 | 20881.7 | 7.6 | 61.548 | 20.22 | 30,088.789 | 40.8 |
| 90s Mov. Ave. Corr. | 54.424 | 56.7 | 20,493.45 | 9.3 | 59.052 | 21.51 | 28,868.344 | 43.3 |

NA = Not Applicable. Mov. Ave. = Moving Average. Mov. Ave. Corr. = Moving Average of Corrected data from the airborne module.

5. Discussion

Analysis of the four available datasets demonstrated that very good estimations could be calculated, with percentage errors as low as 1.1% when compared to field emission rates. The use of different grids, hovering periods, moving average periods and the collection of environmental parameters, as well as UAV telemetry data from several sources, produced a very rich dataset.

Analysis of the particle size distribution during the variable wind experiment demonstrated that particles with a diameter up to approximately 2.0 μm dominated the sample when using the sampling probe. An average difference of 7.6% was observed to affect PM_{10} readings when the sampling probe was used and similar behavior was observed when analyzing the effect of variable wind speed in the OPC-N2 with and without the sampling probe. The particles with diameters ranging from 0.38–0.54 μm were also dominant. However, results from the models generated suggest that these impacts were corrected to obtain comparable results with field values.

Having observed that correlations were only possible if a moving average function analysis was used, different time periods were investigated to balance noise reduction, flight time and area covered. Moving averages of 15 s to 30 s produce consistent results and had some of the lowest percentage errors. On the other hand, it was observed that periods of 60 s to 90 s can produce noticeable variability due to the constant movement of the multi-rotor UAV which increased the difference between data collected as the sampling period increased.

It was expected that a moving average of 15 s or 10 s would produce a better correlation for Test 1 and Test 2 respectively, as these were the hovering sampling periods for which they were programmed. However, it was observed that only Test 2, with the airborne module, produced a reasonable correlation. This could be due to the influence of other environmental variables such as wind speed, wind direction, dust supply rate, etc. For both Tests 1 and 2, the raw values of the airborne module presented the higher errors in the calculation of emission rates. This indicated that the correction made to the readings with the model developed in the laboratory does increase the correlation between the real value and the value obtained with the airborne module. Lower percentage errors resulted when correcting the values calculated with the airborne module with Equations (1) and (2), due to an overestimation observed in all values once processed, when compared with the values of the TSI DRX.

The lowest errors produced when comparing calculated emission rates from the airborne module and the field values, were produced by Test 1 and Test 4. These results indicate that by hovering for short periods of time (10 s to 15 s) it is possible to produce estimations very close to the field values. Another advantage of hovering for short periods of time is that the battery can be used more efficiently, and more hovering locations can be covered within its flying endurance. Having the UAV hovering close to the devices in the tower can assist in concluding that the concentrations corrected with the model developed in the laboratory and the field values were comparable, with a low error between them.

It was possible to identify sources of error, such as: the synchronization of sensors and devices, calibration of sensors, calculation of correction factors and models, individual specifications of sensors (response time, precision, and resistance to exposure in the environment) through the analysis of all data. However, errors obtained for the tests analysed were low and it was important to consider that the methodology tested was a relative monitoring procedure; and not an absolute method such as a gravimetric test.

6. Conclusions

Four datasets were analysed for this investigation. With the current findings, it can be concluded that calculation of emission factors for specific activities in the industrial sector is possible making use of UAV technology. By using the proposed methodology, it is possible to generate emission factors per mine site and activity targeted.

The results of the four tests indicate that the airborne module can be used to obtain PM₁₀ emission rates comparable to a monitoring system located in a tower with the major advantage that the airborne module can be transported to any location, at any time, weather conditions permitting.

Work will continue to include other variables in the modeling analysis. This includes micro and local meteorological data, more telemetry data, and a different modeling approach using artificial neural networks to include more variables. Artificial neural networks will increase the reliability of the model not only by linking a greater number of significant variables but also by providing feedback from new datasets generated.

Acknowledgments: The authors wish to thank Andrew Fletcher, Nathan Unwin, Ashray Doshi, Karl O’Neil, Sam Downs, Armando Navas, Juan Jose Frausto, and Vinod Nath. The authors would like to acknowledge Japan Coal Development Australia Grant, People Centre and Environment Centre at the University of Queensland Sustainable Mineral Institute.

Author Contributions: Miguel Angel Alvarado Molina was responsible for conducting the literature review, design and coordination of experimental procedures. He had the main role in the writing of this paper. Felipe Gonzalez provided advice on experimental design and data interpretation. He also provided guidance on the structure and editing of the research article. David Cliff and Peter Erskine provided overall project guidance and advice on experimental design and data interpretation. They also provided guidance regarding the formatting and editing of the research article. Darlene Heuff provided advice on experimental design and data interpretation.

Conflicts of Interest: The authors declare no conflict of interest.

References

1. Hening, S.; Baumgartner, J.; Walden, C.; Kirmayer, R.; Teodorescu, M.; Nguyen, N.; Ippolito, C. Distributed sampling using small unmanned aerial vehicles (UAVS) for scientific missions. In Proceedings of the AIAA Infotech@Aerospace 2013 Conference, Boston, MA, USA, 19–22 August 2013.
2. Danilov, A.; Smirnov, U.D.; Pashkevich, M. The system of the ecological monitoring of environment which is based on the usage of UAV. *Russ. J. Ecol.* **2015**, *46*, 14–19. [[CrossRef](#)]
3. Haas, P.; Balistreri, C.; Pontelandolfo, P.; Triscone, G.; Peko, H.; Pignatiello, A. Development of an unmanned aerial vehicle UAV for air quality measurements in urban areas. In Proceedings of the 32nd AIAA Applied Aerodynamics Conference, Atlanta, GA, USA, 16–20 June 2014.
4. Gonzalez, L.F.; Lee, D.; Walker, R.A.; Periaux, J. Optimal mission path planning (MPP) for an air sampling unmanned aerial system. In Proceedings of the Austral-Asian Conference on Robotics and Automation, Sydney, Australia, 2–4 December 2009.
5. Gonzalez, L.F.; Castro, M.P.; Tamagnone, F.F. Multidisciplinary design and flight testing of a remote gas/particle airborne sensor system. In Proceedings of the 28th International Congress of the Aeronautical Sciences, Brisbane, Australia, 23–28 September 2012; Optimage Ltd.: Brisbane, Australia, 2012; pp. 1–13.
6. Malaver, A.; Gonzalez, F.; Motta, N.; Depari, A.; Corke, P. Towards the Development of a Gas Sensor System for Monitoring Pollutant Gases in the Low Troposphere Using Small Unmanned Aerial Vehicles. In Proceedings of the Workshop on Robotics for Environmental Monitoring, Sydney, Australia, 11 July 2012.
7. Malaver Rojas, A.J.; Gonzalez, L.F.; Motta, N.; Villa, T.F. Design and flight testing of an integrated solar powered UAV and WSN for remote gas sensing. In Proceedings of the 2015 IEEE Aerospace Conference, Big Sky, MT, USA, 7–14 March 2015.
8. Krüll, W.; Tobera, R.; Willms, I.; Essen, H.; von Wahl, N. Early Forest Fire Detection and Verification using Optical Smoke, Gas and Microwave Sensors. *Procedia Eng.* **2012**, *45*, 584–594. [[CrossRef](#)]
9. Alvarado, M.; Gonzalez, F.; Fletcher, A.; Doshi, A. Towards the development of a low cost airborne sensing system to monitor dust particles after blasting at open-pit mine sites. *Sensors* **2015**, *15*, 19667–19687. [[CrossRef](#)] [[PubMed](#)]
10. Alvarado, M.; Gonzalez, F.; Fletcher, A.; Doshi, A. Correction: Alvarado, M., et al. Towards the Development of a Low Cost Airborne Sensing System to Monitor Dust Particles after Blasting at Open-Pit Mine Sites. *Sensors* **2015**, *15*, 19667–19687. *Sensors* **2016**, *16*, 1028. [[CrossRef](#)] [[PubMed](#)]
11. Alphasense. Alphasense User Manual. In *OPC-N2 Optical Particle Counter*, 5th ed.; Alphasense Ltd.: Essex, UK, 2015.

12. Von der Weiden, S.L.; Drewnick, F.; Borrmann, S. Particle Loss Calculator—A new software tool for the assessment of the performance of aerosol inlet systems. *Atmos. Meas. Tech.* **2009**, *2*, 479–494. [[CrossRef](#)]
13. Lodge, J.P. *Methods of Air Sampling and Analysis*; Taylor & Francis: London, UK, 1988.
14. Pena, J.; Norman, J.; Thomson, D. Isokinetic sampler for continuous airborne aerosol measurements. *J. Air Pollut. Control Assoc.* **1977**, *27*, 337–341. [[CrossRef](#)]
15. Wilcox, J.D. Isokinetic Flow and Sampling. *J. Air Pollut. Control Assoc.* **1956**, *5*, 226–245. [[CrossRef](#)]
16. Huebert, B.; Lee, G.; Warren, W. Airborne aerosol inlet passing efficiency measurement. *J. Geophys. Res. Atmos.* **1990**, *95*, 16369–16381. [[CrossRef](#)]
17. Irshad, H.; McFarland, A.R.; Landis, M.S.; Stevens, R.K. Wind Tunnel Evaluation of an Aircraft-Borne Sampling System. *Aerosol Sci. Technol.* **2004**, *38*, 311–321. [[CrossRef](#)]
18. TSI. Operation and Service Manual, Dusttrak™ DRX. Available online: http://www.tsi.com/uploadedFiles/_Site_Root/Products/Literature/Manuals/8533--8534-DustTrak_DRX-6001898-web.pdf (accessed on 1 January 2017).
19. Napier-Munn, T. *Statistical Methods for Mineral Engineers—How to Design Experiments and Analyse Data*; Julius Kruttschnitt Mineral Research Centre: Brisbane, Australia, 2014; Volume 5.
20. Barrat, R. *Atmospheric Dispersion Modelling, an Introduction to Practical Applications*; Earthscan Publications Ltd.: Sterling, VA, USA, 2001; p. 151.
21. Roddis, D.; Laing, G.; Boulter, P.; Cox, J. *ACARP Project C22027—Development of Australia-Specific PM₁₀ Emission Factors for Cal Mines*; 06961P; Australian Coal Association Research Program (ACARP): Brisbane, Australia, 2015.
22. Visscher, A.D. Gaussian Dispersion Modeling. In *Air Dispersion Modeling*; John Wiley & Sons, Inc.: New York, NY, USA, 2013; pp. 141–200.
23. Chakraborty, M.K.; Ahmad, M.; Singh, R.S.; Pal, D.; Bandopadhyay, C.; Chaulya, S.K. Determination of the emission rate from various opencast mining operations. *Environ. Model. Softw.* **2002**, *17*, 467–480. [[CrossRef](#)]



© 2017 by the authors; licensee MDPI, Basel, Switzerland. This article is an open access article distributed under the terms and conditions of the Creative Commons Attribution (CC BY) license (<http://creativecommons.org/licenses/by/4.0/>).