

Determination of Zinc, Cadmium, Lead, Copper and Silver Using a Carbon Paste Electrode and a Screen Printed Electrode Modified with Chromium(III) Oxide

Zuzana Koudelkova ¹, Tomas Syrový ^{2,3}, Pavlina Ambrozova ⁴, Zdenek Moravec ⁵, Lubomir Kubac ^{3,6}, David Hynek ^{1,7}, Lukas Richtera ^{1,7}, Vojtech Adam ^{1,7,*}

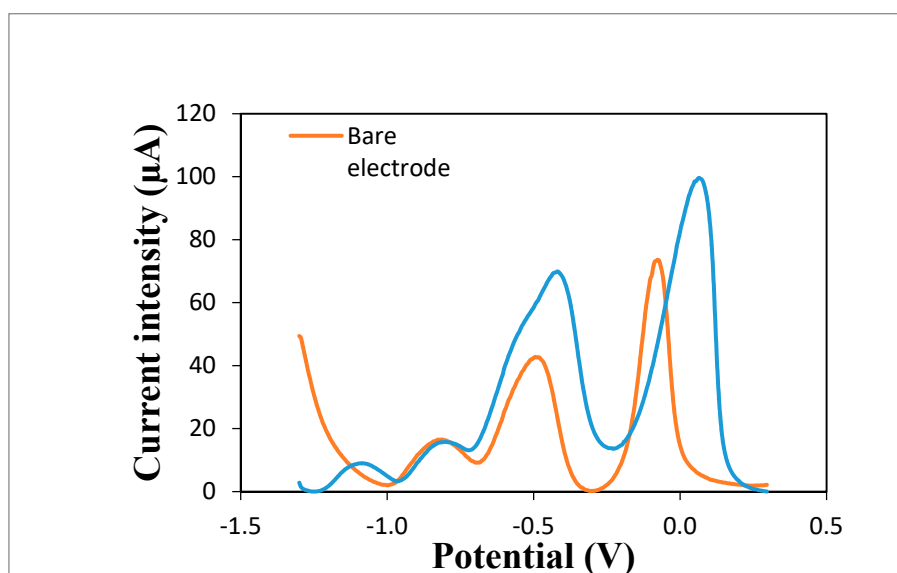
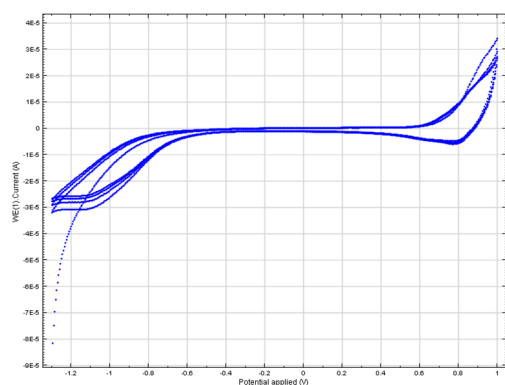
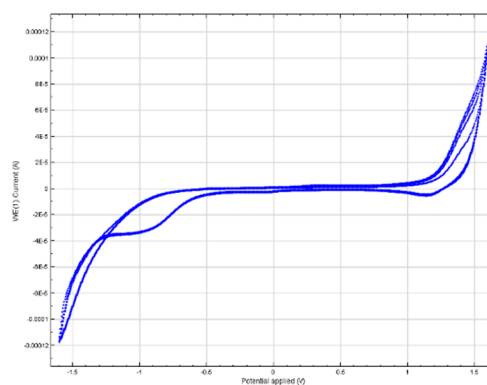


Figure S1. Comparison of the influence of the heavy metals detection with the bare electrode compared to the CPE modified with thermally produced Cr_2O_3 . The concentration of individual metals was $800 \mu\text{g}\cdot\text{L}^{-1}$.



(a)



(b)

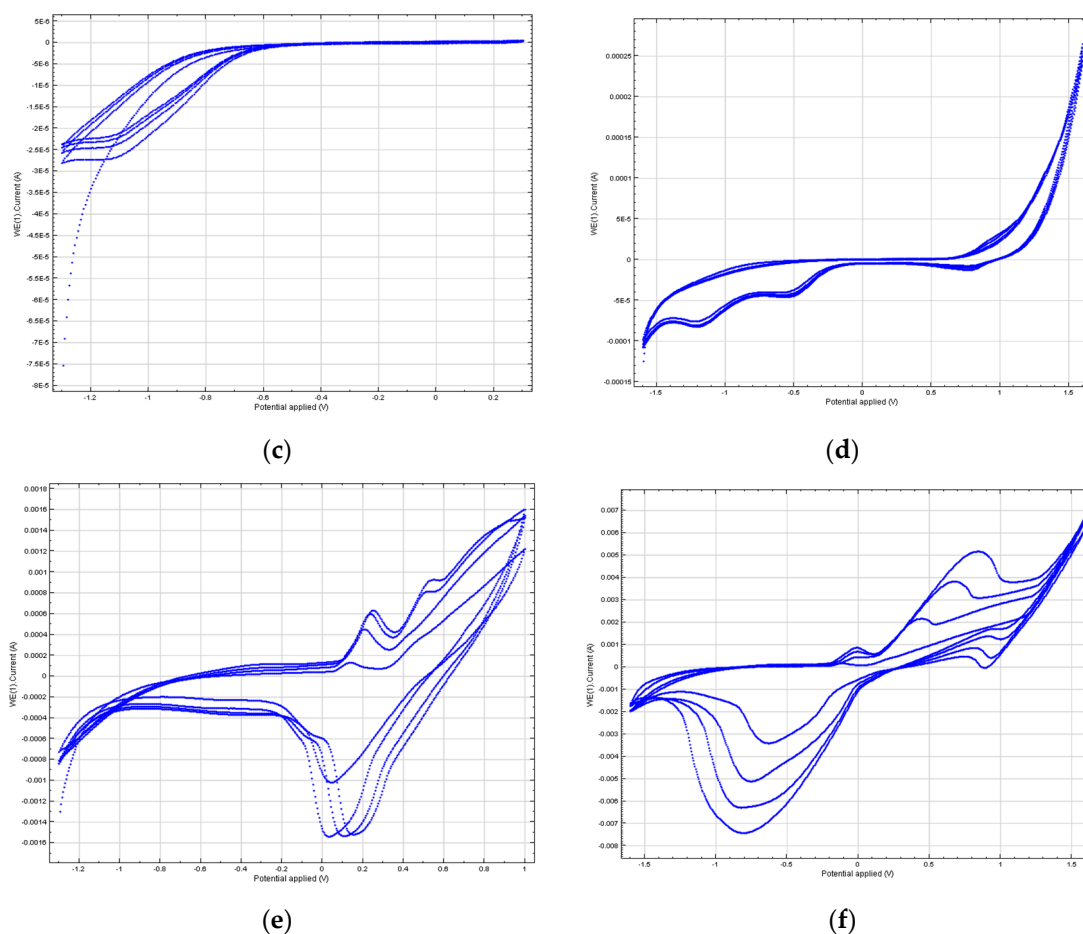


Figure S2. Cyclic voltammetry of individual materials. (a) CV for the bare electrode, the range from -1.3 to 0.3 V, (b) CV for the bare electrode, the range from -1.6 to 1.6 V, (c) CV for the Cr-CPE, the range from -1.3 to 0.3 V, (d) CV for the Cr-CPE, the range from -1.6 to 1.6 V, (e) CV for the Cr-SPE, the range from -1.3 to 0.3 V, (f) CV for the Cr-SPE, the range from -1.6 to 1.6 V.

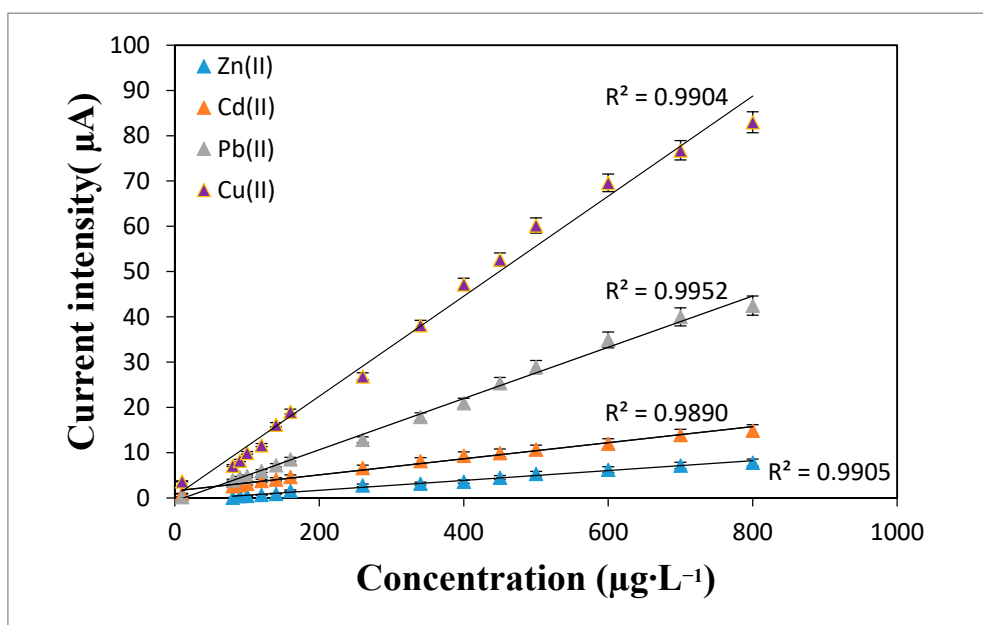


Figure S3. The calibration curves for each metals ions Zn(II), Cd(II), Pb(II) and Cu(II), measurement by the Cr-CPE.