

## Supplementary Information

# Capacitive Heart-Rate Sensing on Touch Screen Panel with Laterally Interspaced Electrodes

Junhyung Kim <sup>1</sup>, Wonho Song <sup>2</sup>, Sungchul Jung <sup>3</sup>, Yuna Kim <sup>4</sup>, Wonsang Park <sup>4</sup>, Bonghyun You <sup>4</sup>, and Kibog Park <sup>1,2,\*</sup>

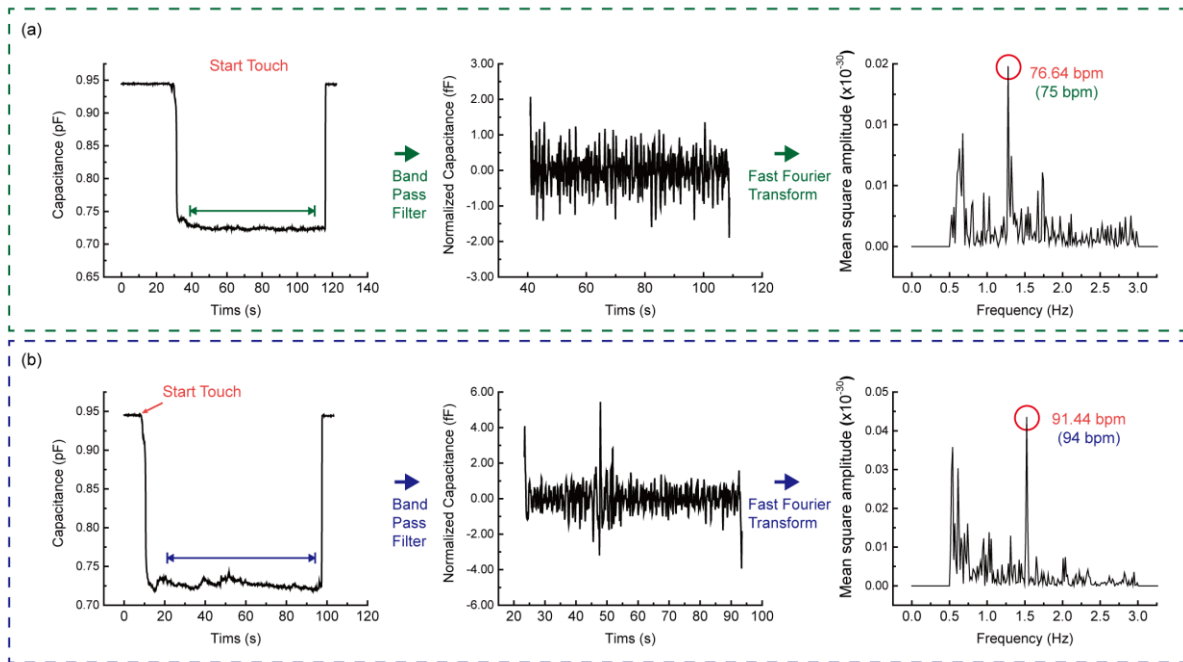
<sup>1</sup> School of Electrical and Computer Engineering, Ulsan National Institute of Science and Technology (UNIST), Ulsan 44919, Republic of Korea; junhyung@unist.ac.kr

<sup>2</sup> Department of Physics, Ulsan National Institute of Science and Technology (UNIST), Ulsan 44919, Republic of Korea; iuu13456@unist.ac.kr

<sup>3</sup> SK hynix, Icheon 17336, Republic of Korea; sungchul.jung@sk.com

<sup>4</sup> Samsung Display Giheung Campus, Yongin-si, Gyeonggi-do, 17113, Republic of Korea; yuna0731.kim@samsung.com (Y. K.); wongsang.park@samsung.com (W. P.); yubong@samsung.com (B.Y.)

\* Correspondence: kibogpark@unist.ac.kr; Tel.: +(82)-052-217-2111



**Figure S1.** In case of the PDMS protective layer, the capacitance signal when a finger touches the PDMS surface, normalized capacitance signal after band pass filtering, and its frequency spectrum obtained from FFT corresponding to the directly-counted heart-rate of (a) 75 bpm and (b) 94 bpm