

Article

Electrochemical Immunosensor for the Early Detection of Rheumatoid Arthritis Biomarker: Anti-Cyclic Citrullinated Peptide Antibody in Human Serum Based on Avidin-Biotin System

Somasekhar R. Chinnadayala ¹ and Sungbo Cho ^{1,2,*}

¹ Department of Electronic Engineering, Gachon University, 1342 Seongnamdaero, Seongnam-si, Gyeonggi-do 13120, Korea; ssreddy@gachon.ac.kr

² Department of Health Science and Technology, GAIHST, Gachon University, Incheon 21999, Korea

* Correspondence: sbcho@gachon.ac.kr; Tel.: +82-(31)-750-5321

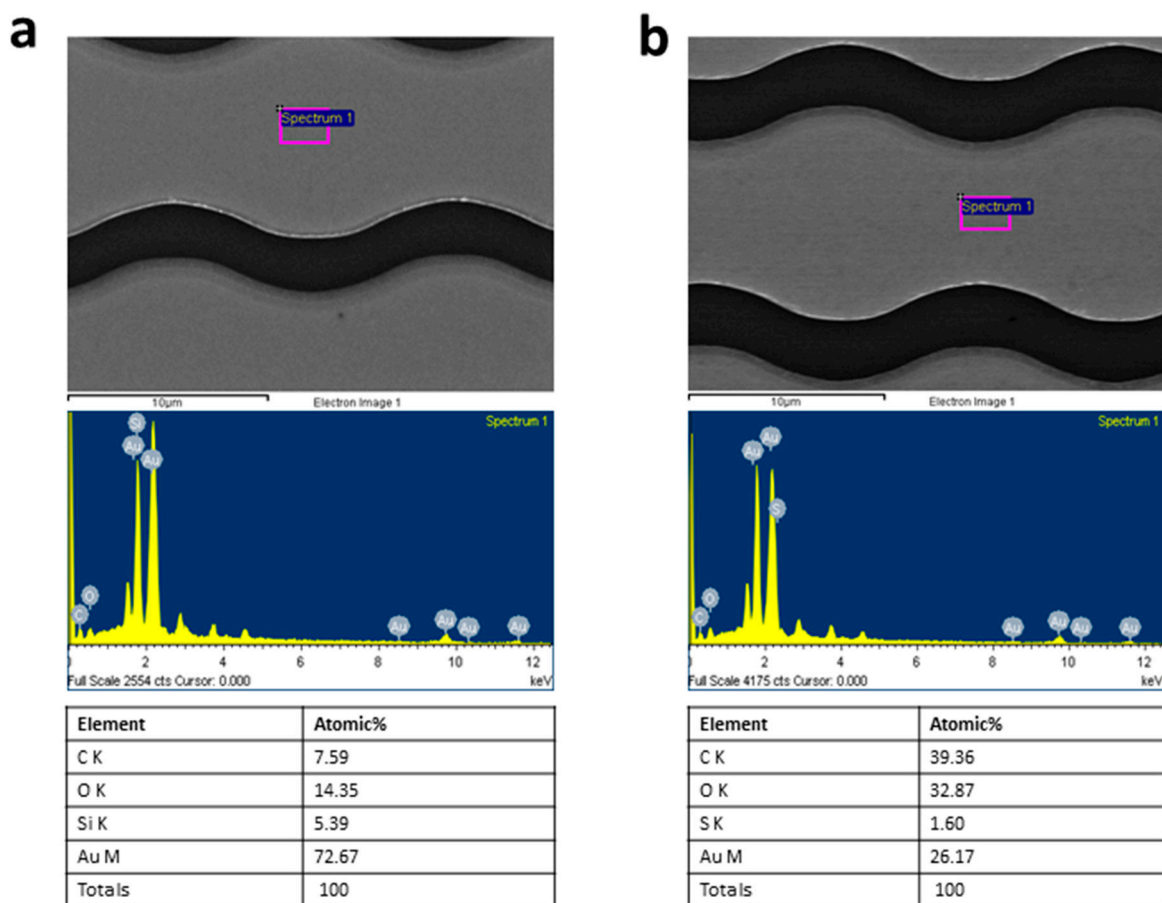


Figure S1. Energy dispersive x-ray spectroscopy of the bare ICE (a) and the 6-Mercaptohexanoic acid modified ICE surface (b).

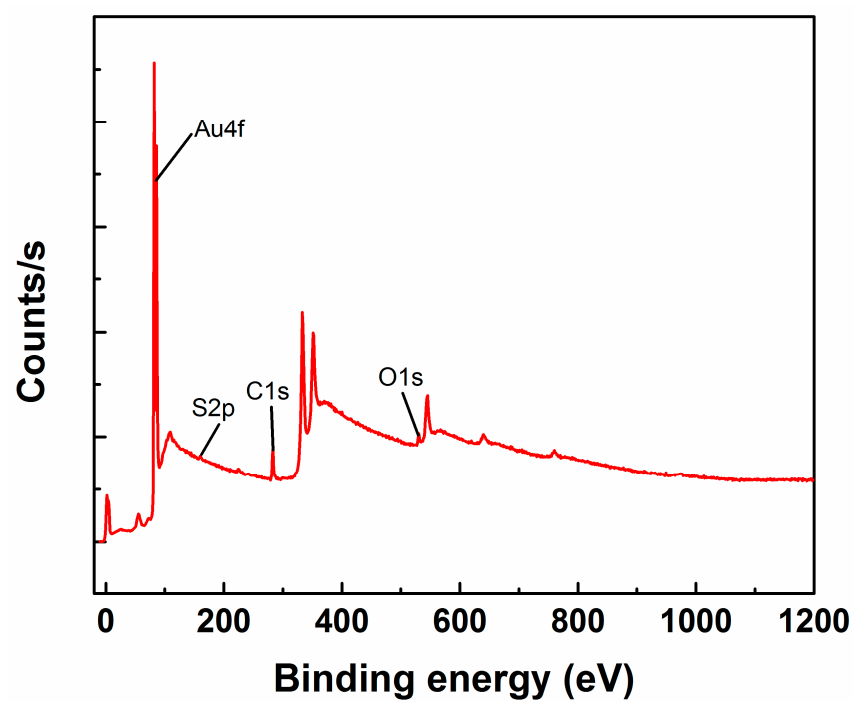


Figure S2. X-ray photoelectron spectroscopy survey spectra of the 6-mercaptopropionic acid functionalized on the electrode surface.