

Figure A3a: Envelope of muscle activity during gait in FXS subjects and CS (median values and IQR), bilaterally for the following muscles: Tibialis Anterior, Rectus Femoris, Gastrocnemius Lateralis, Biceps Femoris. Horizontal bars represent intervals of gait cycle with significant differences (Kruskal-Wallis test with post-hoc Wilcoxon rank sum test with Bonferroni correction). FXS Full mutation (red), FXS Mosaics (green) and CS (grey). Colors refer to the online version of the figure.

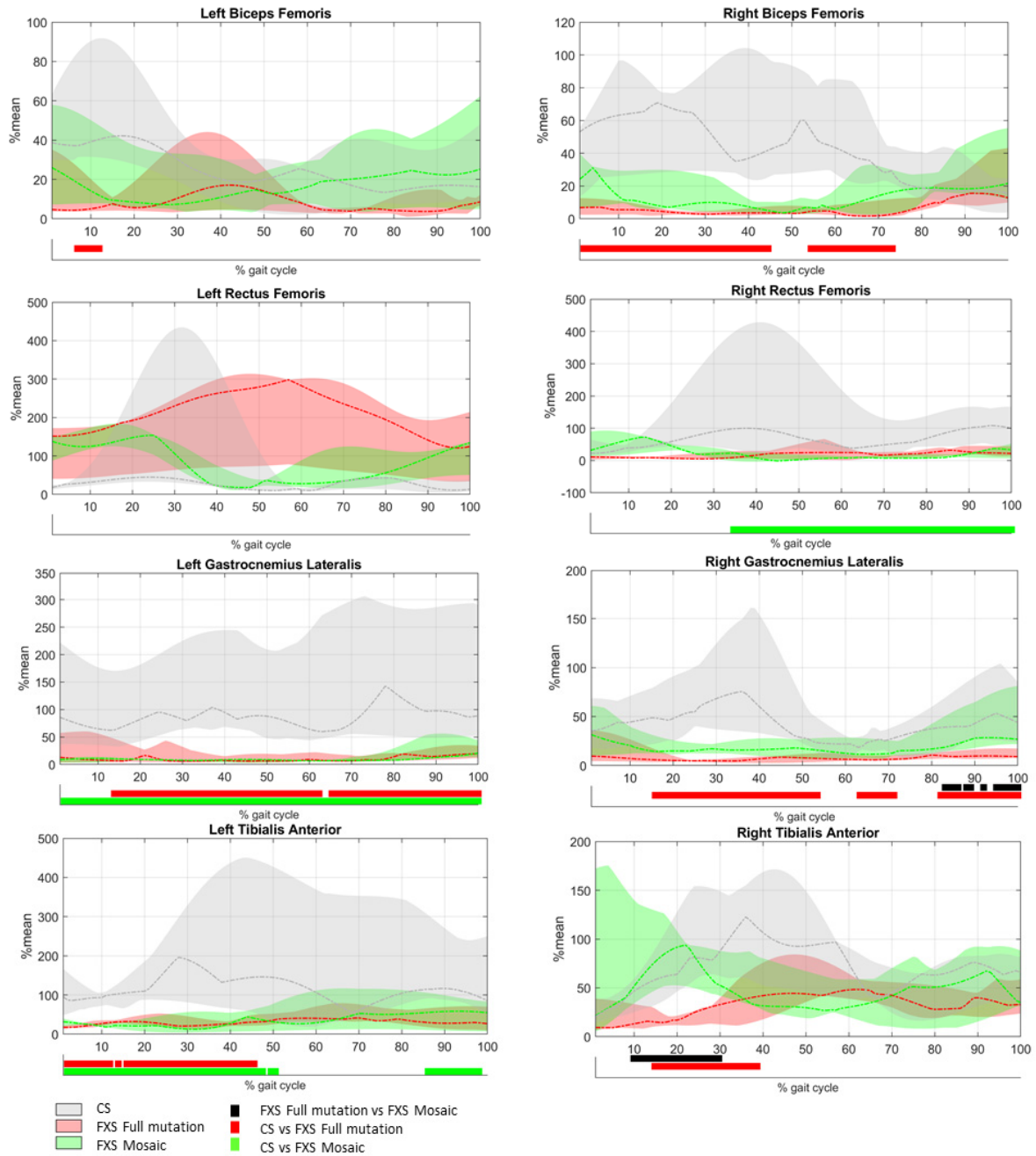
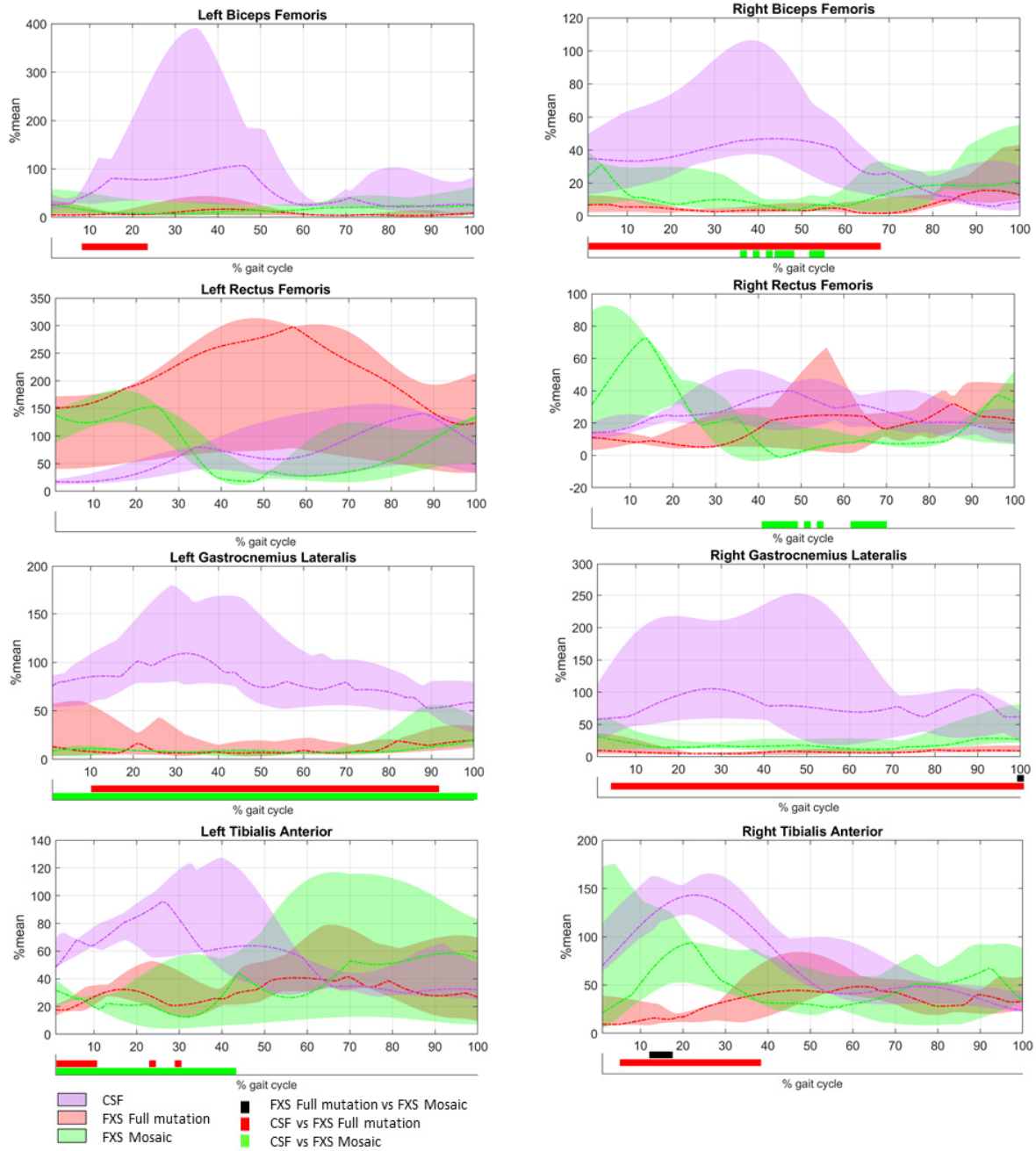


Figure A3b: Envelope of muscle activity during gait in FXS subjects and CS (median values and IQR), bilaterally for the following muscles: Tibialis Anterior, Rectus Femoris, Gastrocnemius Lateralis,



Biceps Femoris. Horizontal bars represent intervals of gait cycle with significant differences (Kruskal-Wallis test with post-hoc Wilcoxon rank sum test with Bonferroni correction). FXS Full mutation (red), FXS Mosaics (green) and CSF (purple). Colors refer to the online version of the figure.

Figure A3c: Envelope of muscle activity during gait in FXS subjects and CS (median values and IQR), bilaterally for the following muscles: Tibialis Anterior, Rectus Femoris, Gastrocnemius Lateralis, Biceps Femoris. Horizontal bars represent intervals of gait cycle with significant differences (Kruskal-

Wallis test with post-hoc Wilcoxon rank sum test with Bonferroni correction). FXS Full mutation (red), FXS Mosaics (green) and CSL (yellow). Colors refer to the online version of the figure

