

## Supplementary material

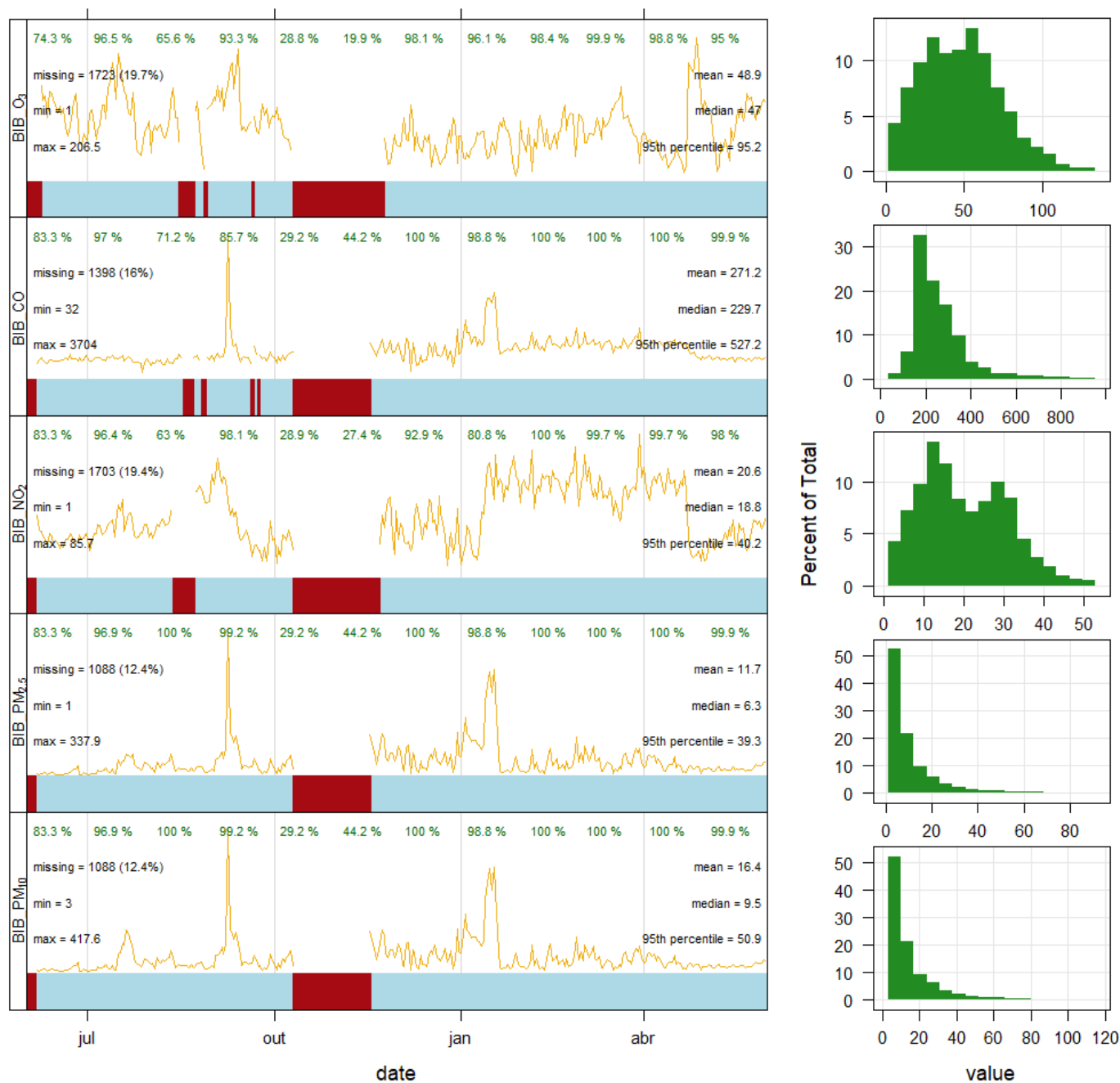


Figure S1. Timeseries of the daily means and density probability plot for all the pollutants measured in the Library sensors station.

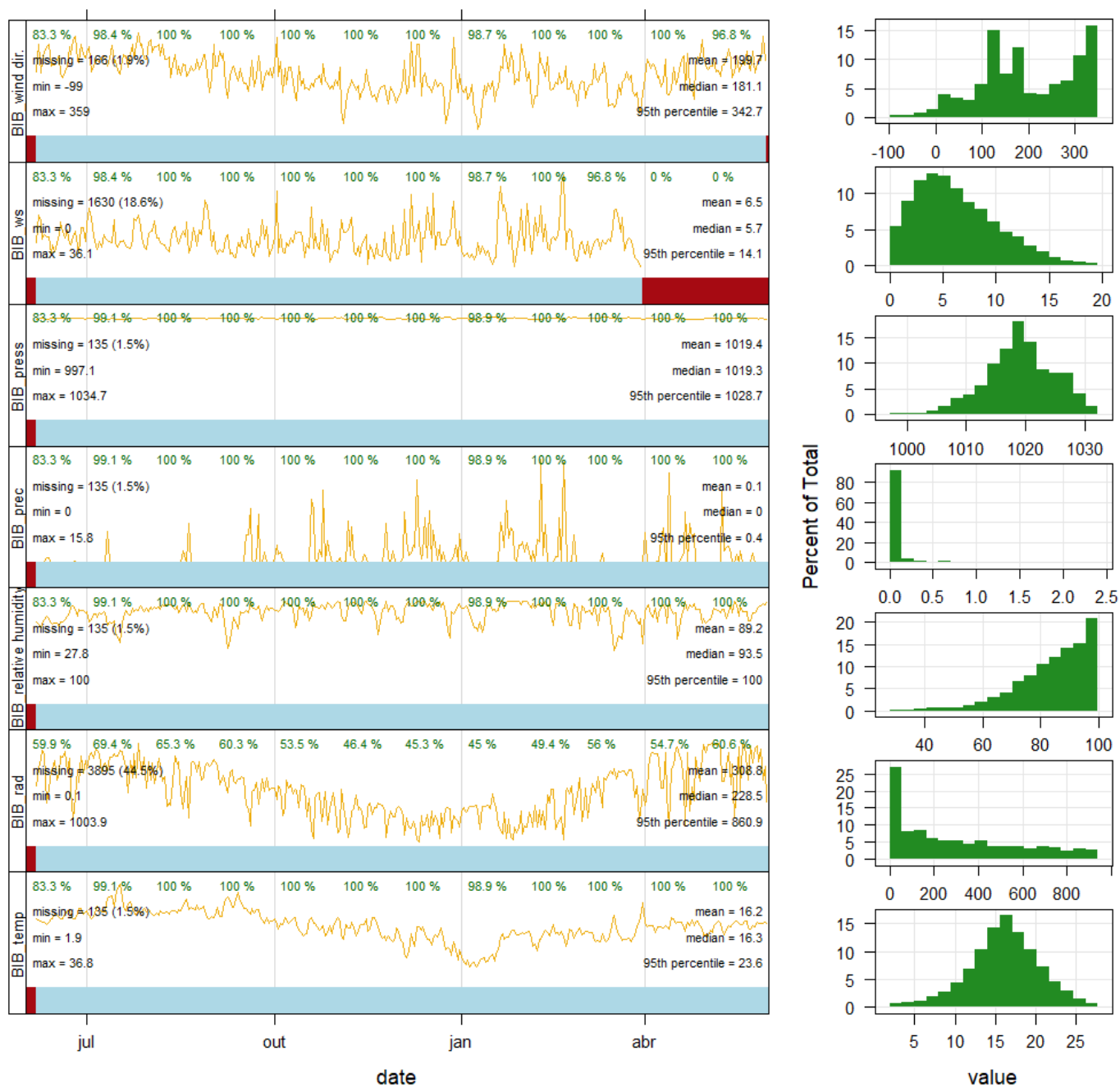


Figure S2. Timeseries of the daily means and density probability plot for all the meteorological parameters measured in the Library meteorological station.

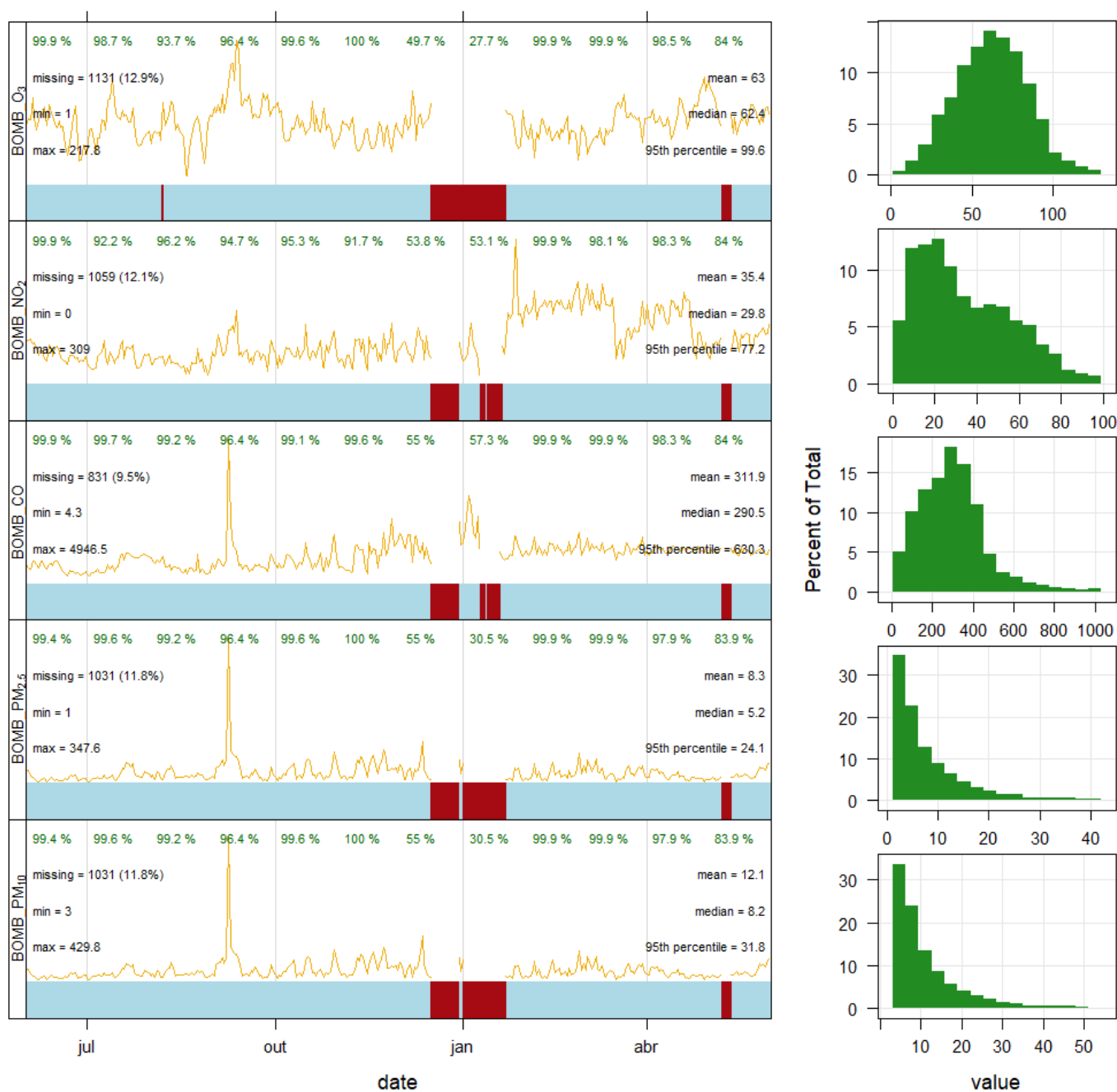


Figure S3. Timeseries of the daily means and density probability plot for all the pollutants measured in the Firefighters Headquarters sensors station.

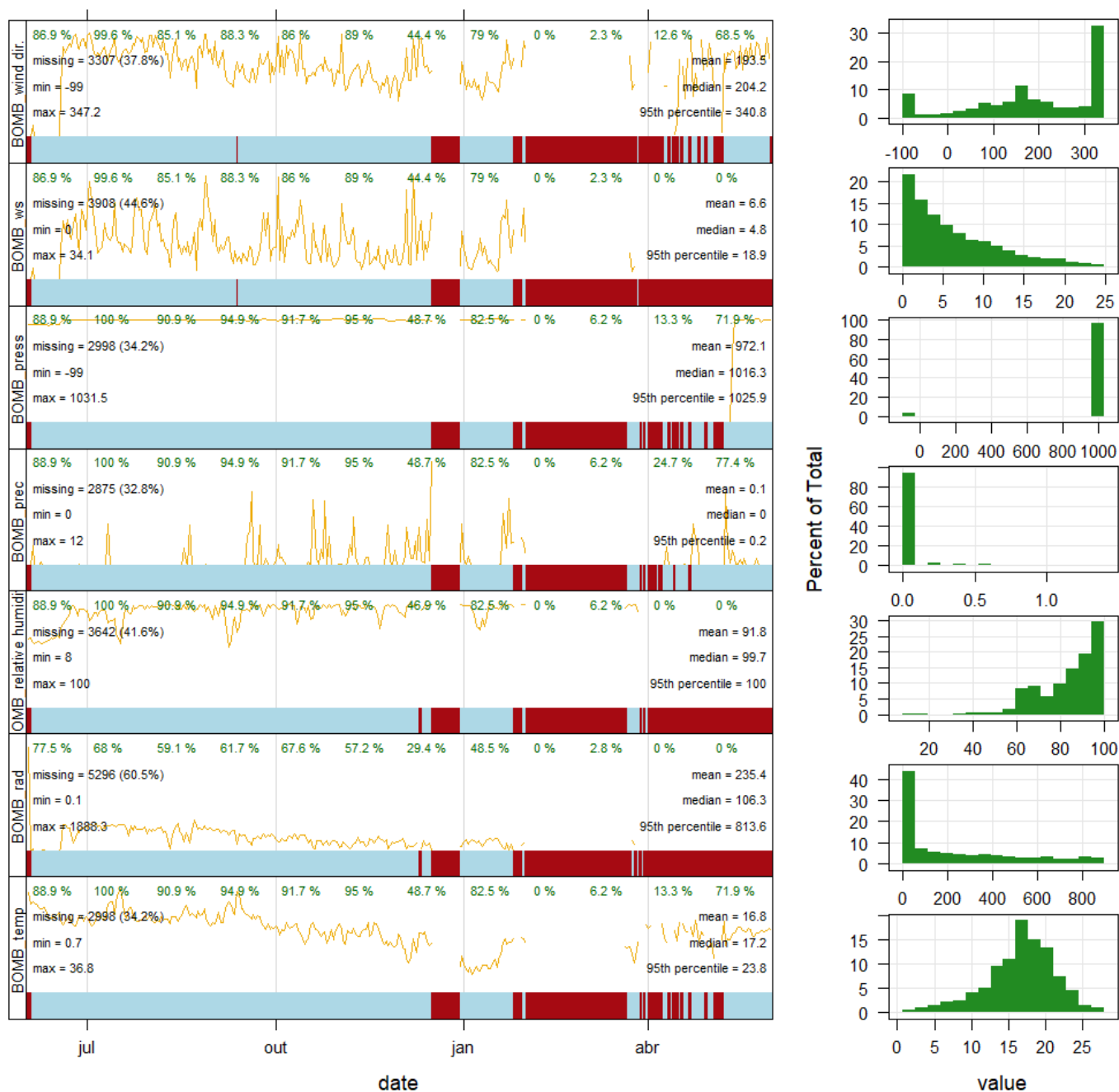


Figure S4. Timeseries of the daily means and density probability plot for all the meteorological parameters measured in the Firefighters Headquarters meteorological station.



Figure S5. Timeseries of the daily means and density probability plot for all the pollutants measured in the Congress Centre sensors station.



Figure S6. Timeseries of the daily means and density probability plot for all the pollutants measured in the Chapel sensors station.

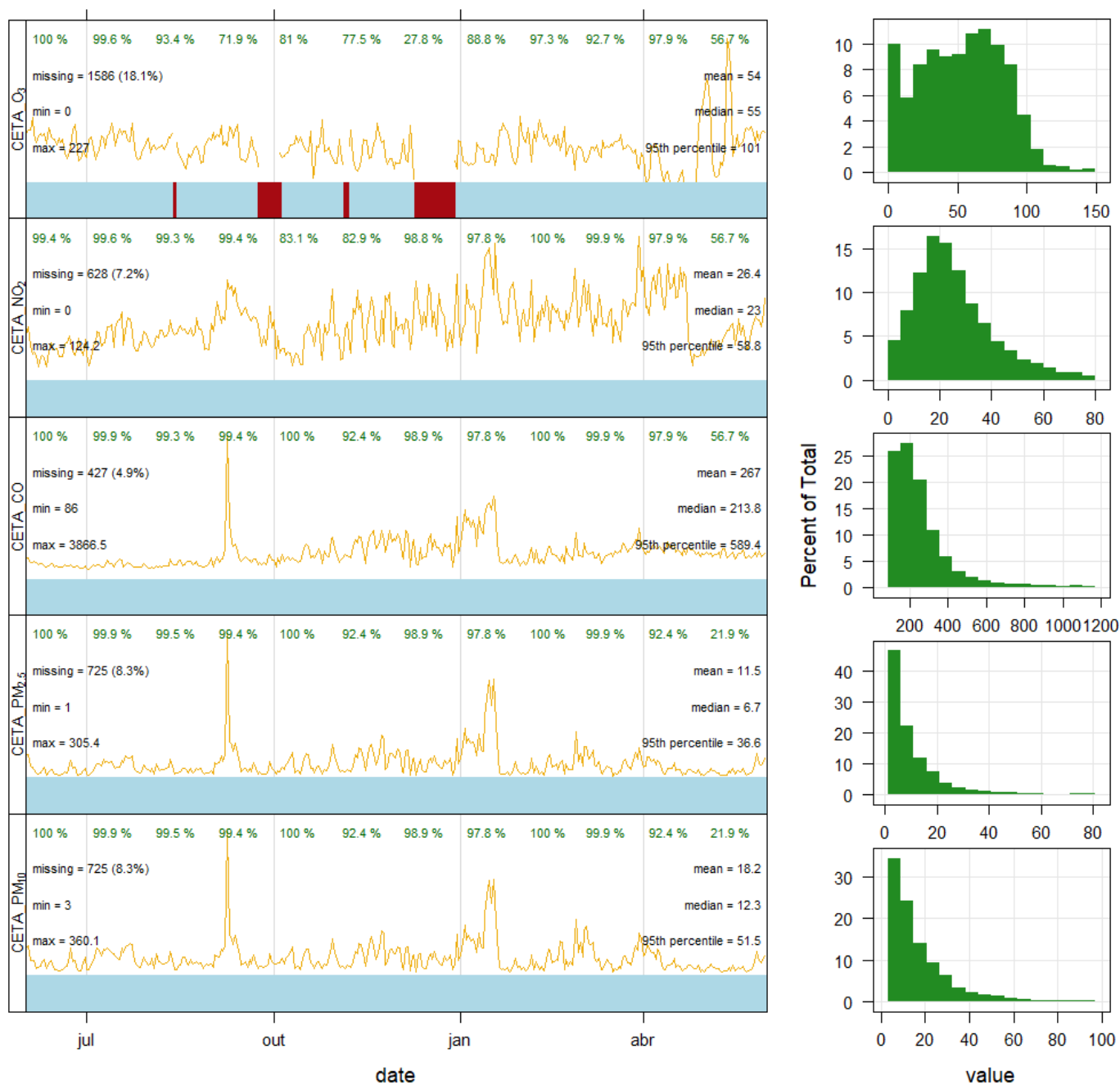


Figure S7. Timeseries of the daily means and density probability plot for all the pollutants measured in the CETA sensors station.

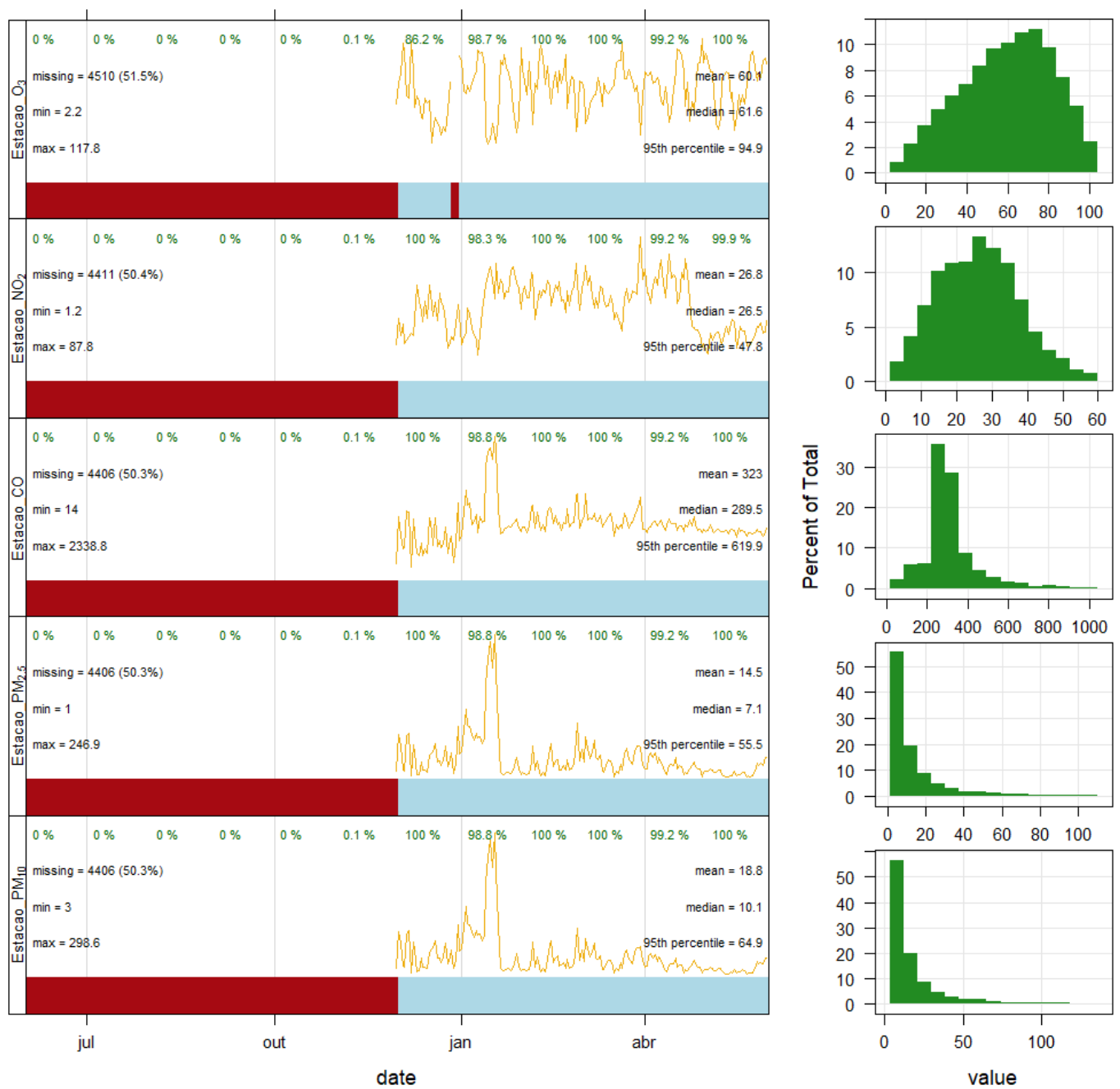


Figure S8. Timeseries of the daily means and density probability plot for all the pollutants measured in the Train Station sensors station.



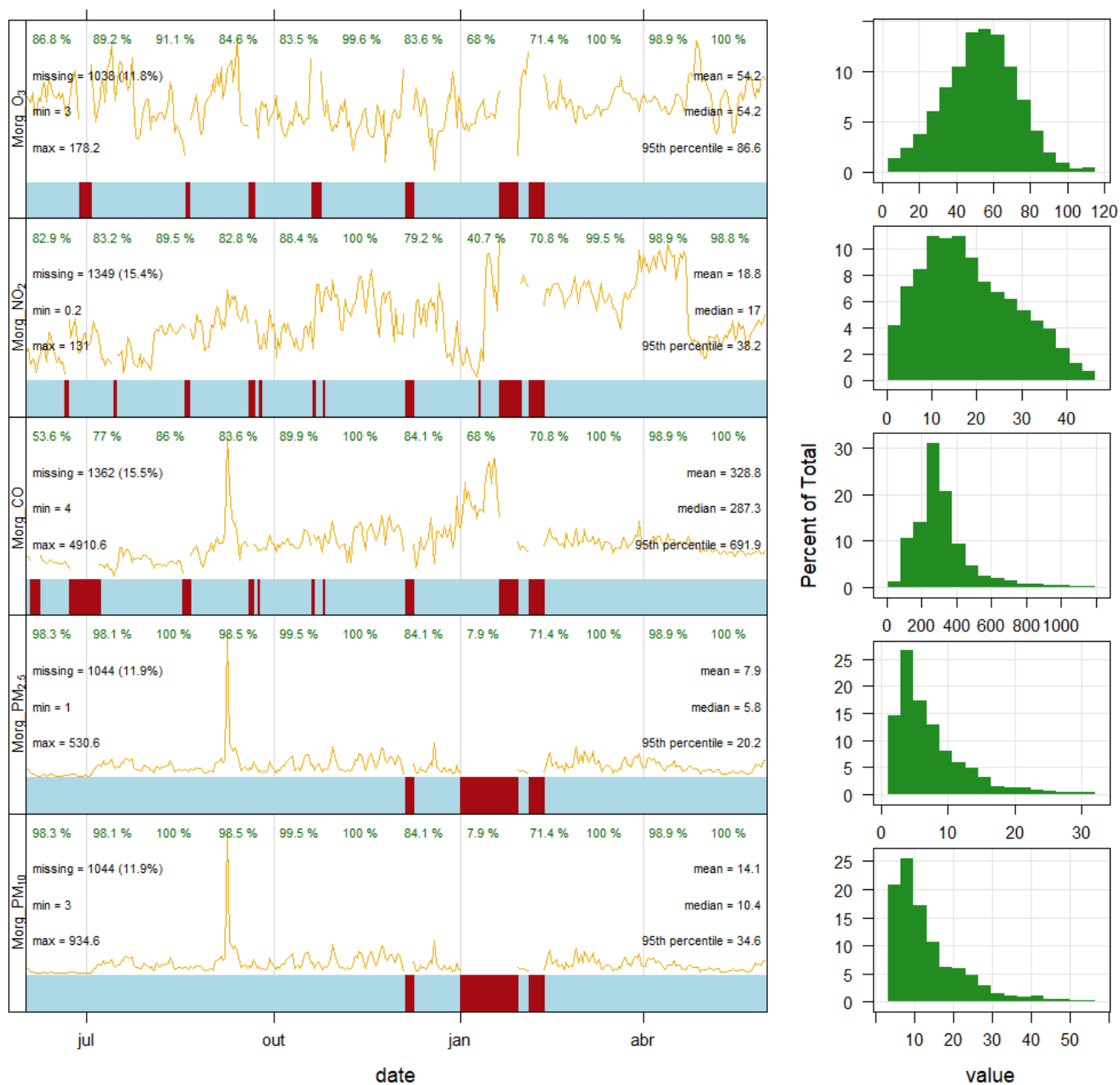


Figure S9. Timeseries of the daily means and density probability plot for all the pollutants measured in Morgados sensors station.

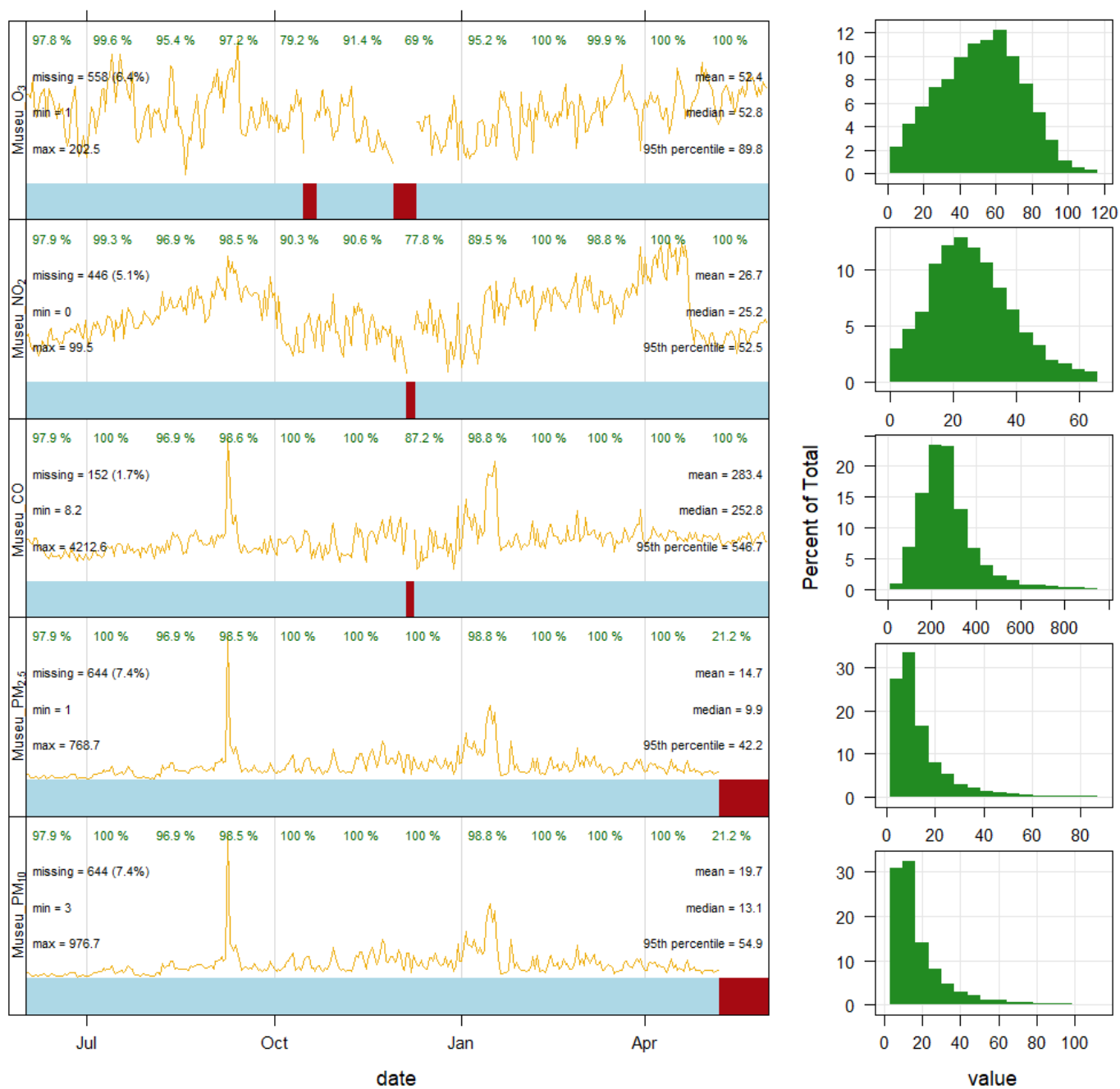


Figure S10. Timeseries of the daily means and density probability plot for all the pollutants measured in the Museum sensors station

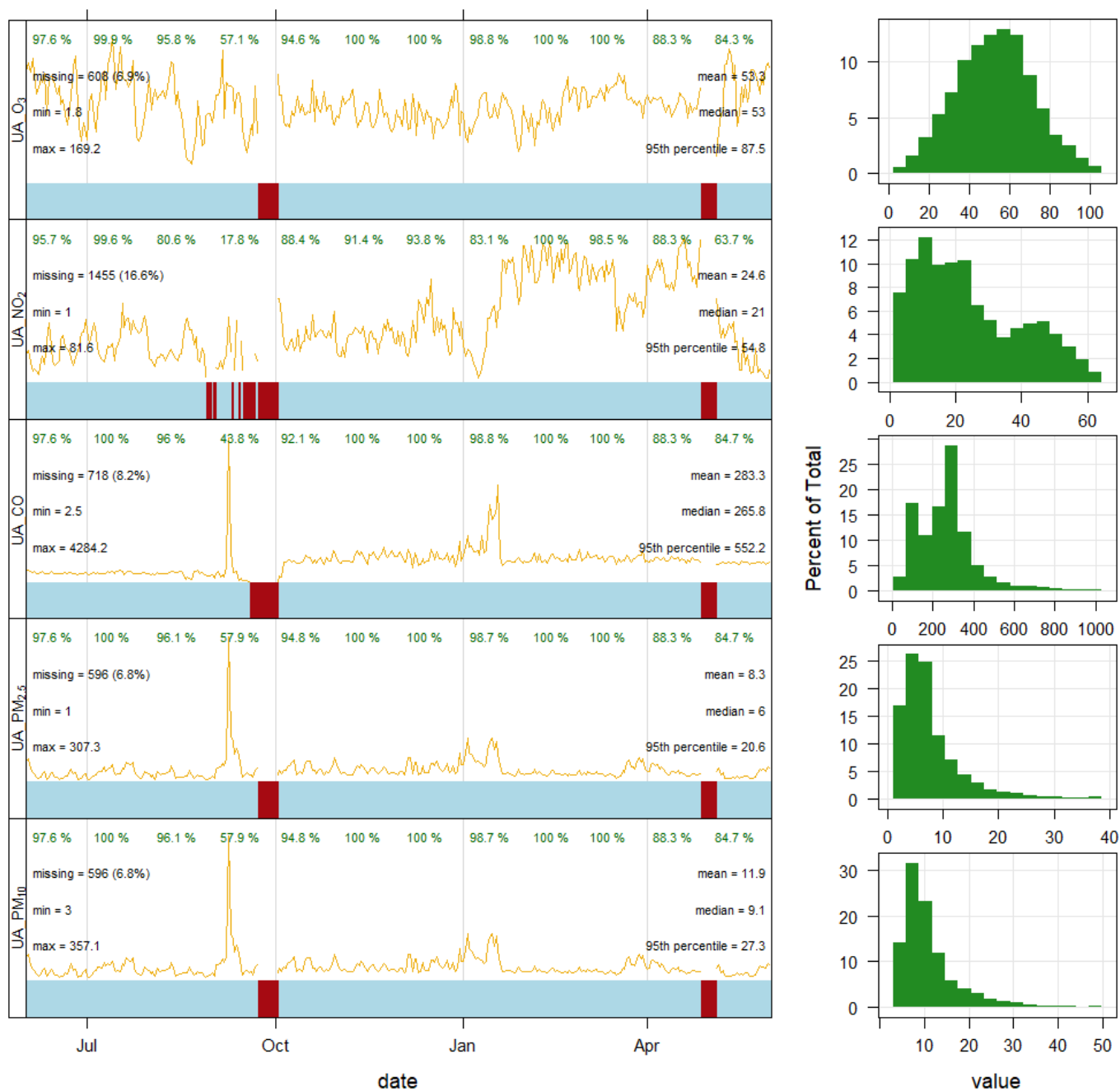


Figure S11. Timeseries of the daily means and density probability plot for all the pollutants measured in University sensors station

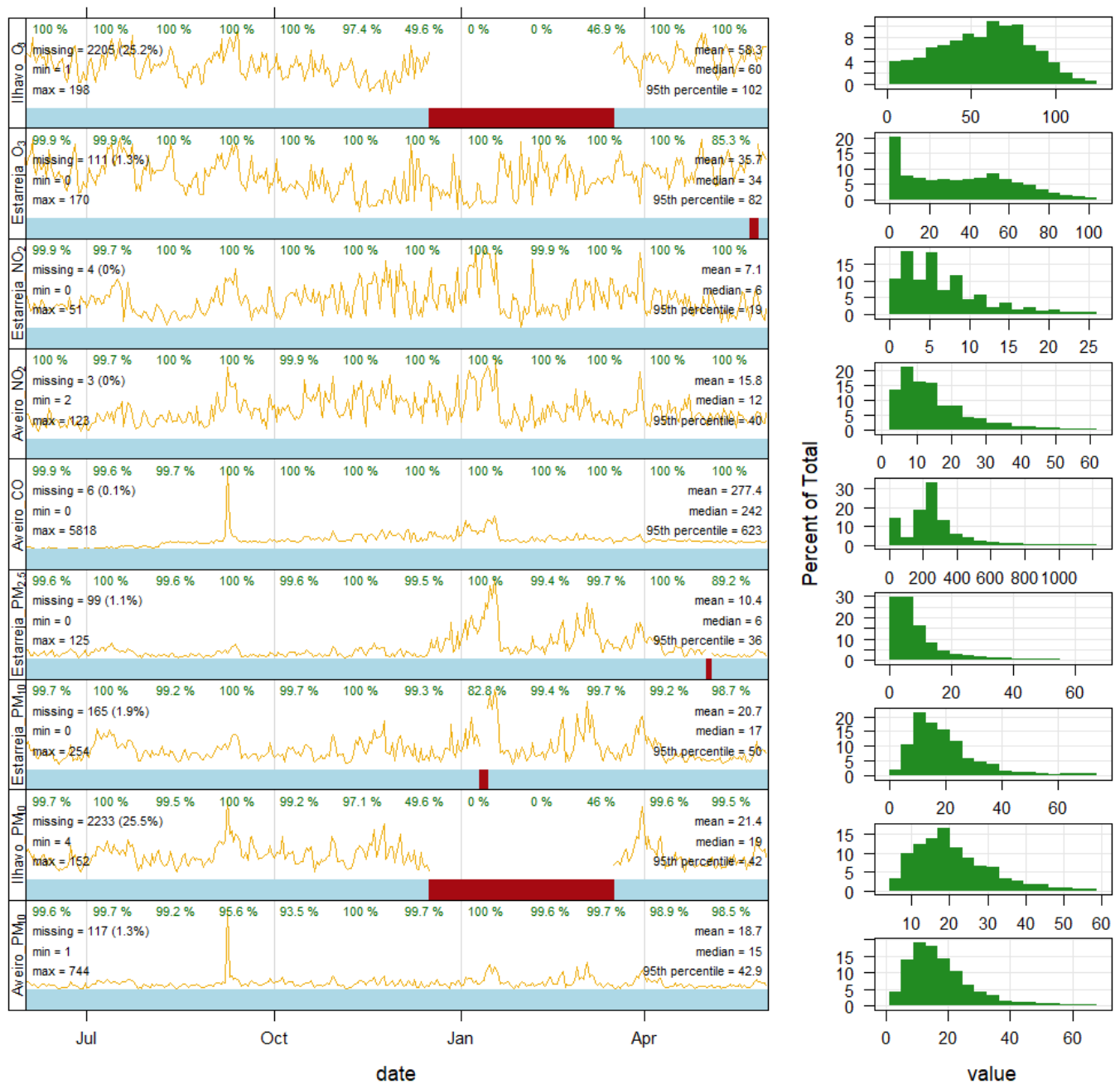


Figure S12. Timeseries of the daily means and density probability plot for PM<sub>10</sub>, PM<sub>2.5</sub>, NO<sub>2</sub> and O<sub>3</sub> in the reference stations of Aveiro, Estarreja and Ílhavo.



Figure S13. Satellite image of 8 September of 2020 as an example of one of the wildfires that occurred in September (WorldView, NASA).