

Supplementary material

Figure S1. Dataset

	PT_01		PT_02		PT_03		PT_04		PT_05		PT_06		PT_07		PT_08		PT_09		PT_10		PT_11		PT_12		PT_13		PT_14		PT_15		PT_16		PT_17		PT_18		PT_19		PT_20		PT_21	
Fraction	CT	CBCT	CT	CBCT	CT	CBCT	CT	CBCT	CT	CBCT	CT	CBCT	CT	CBCT	CT	CBCT	CT	CBCT	CT	CBCT	CT	CBCT	CT	CBCT	CT	CBCT	CT	CBCT	CT	CBCT	CT	CBCT	CT	CBCT	CT	CBCT	CT	CBCT	CT	CBCT		
CT < 1 day before																																										
1		TR		X										TR			X																				TR	TS				
2																																										
3																																										
4						TR																																				
5		TR										TR																														
6								TR		TS																																
7														TR																												
8				X													X																									
9								TR																																		
10																																										
11		TR						TR		TS		TR																														
12																																										
13														TR																												
14																																										
15						TR						TR																														
16		TR																																								
17																																										
18														TR			X																									
19																																										
20																																										
21		TR																																								
22														TR																												
23																																										
24														TR																												
25		TR				TR																																				
26																																										
27																																										
28														TR																												
29																																										
30																																										
31																																										
32																																										
33																																										

**Legend:** Light blue: all available CBCTs; green: same-day CBCTs used for training (TR); orange: same-day CBCTs used for testing (TS); red: same day CBCTs discarded (X).

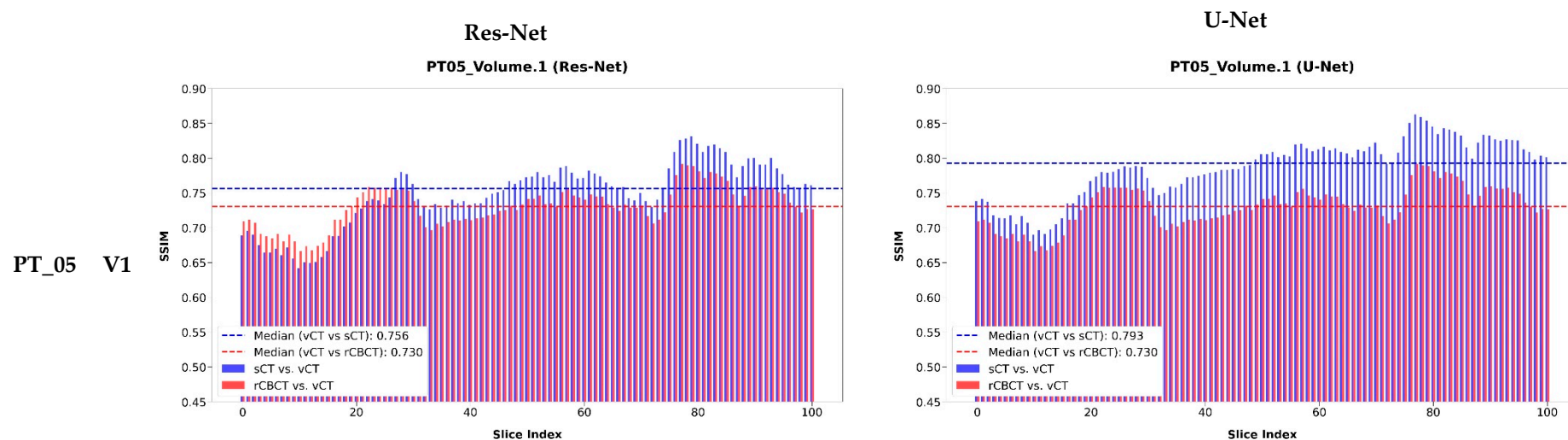
**Abbreviations:** CBCT: cone beam computed tomography; CT: computed tomography; PT\_: patient.

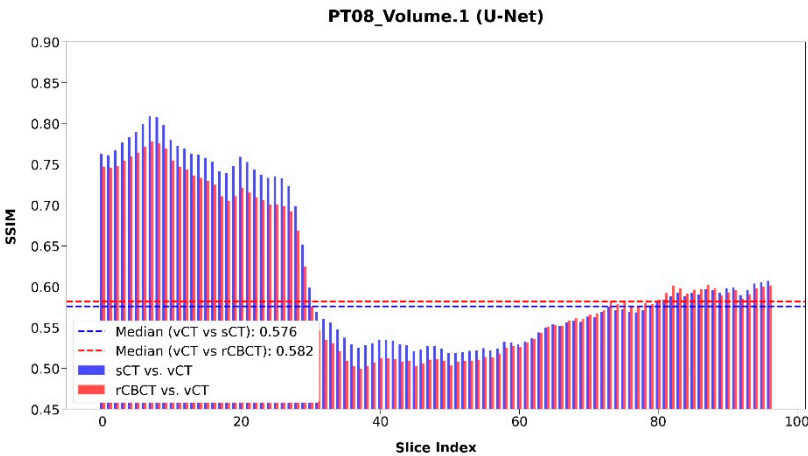
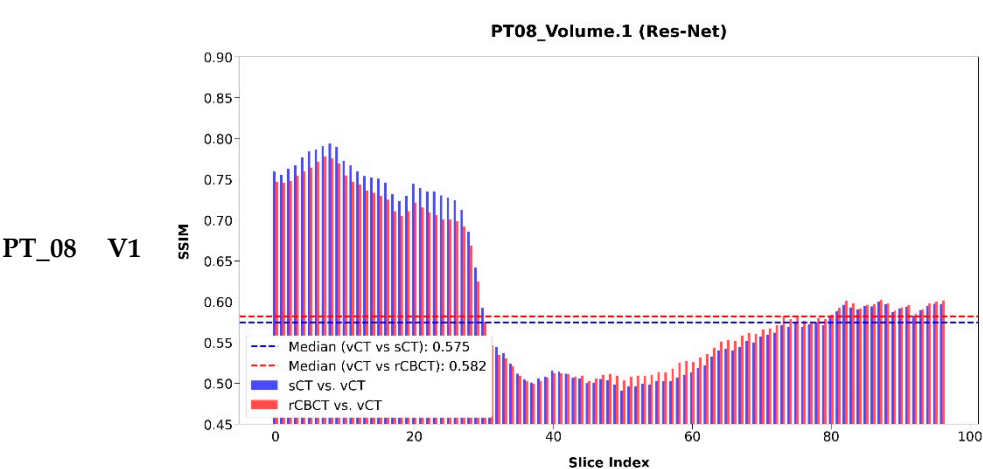
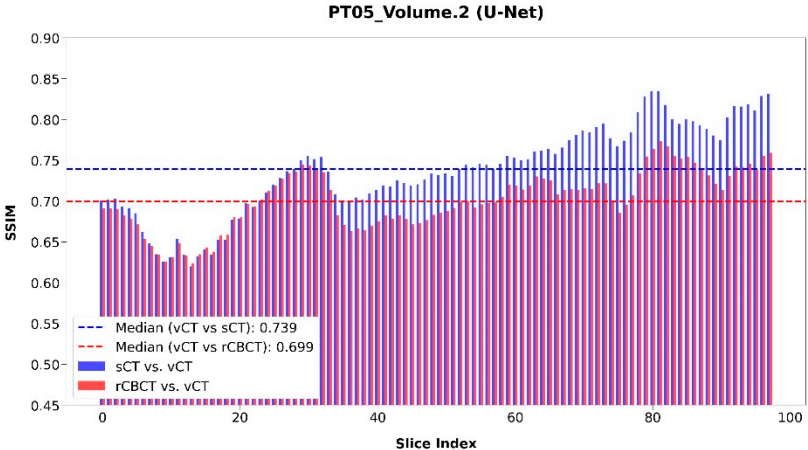
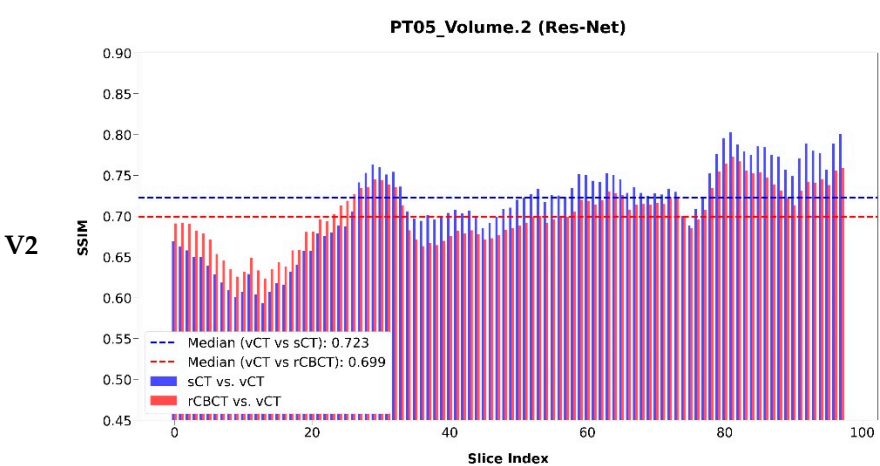
**Figure S2.** Slice-wise SSIM values before (rCBCT vs vCT) and after (sCT vs vCT) cycleGAN for both Res-Net (left) and U-Net (right) architectures. Median values are also reported.

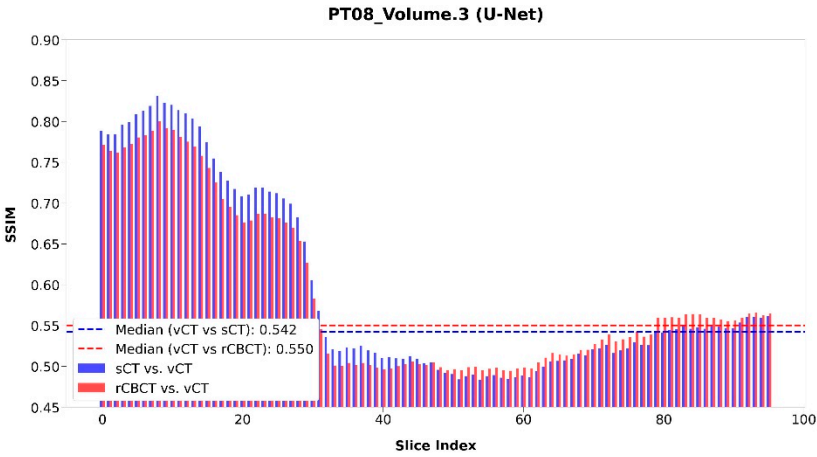
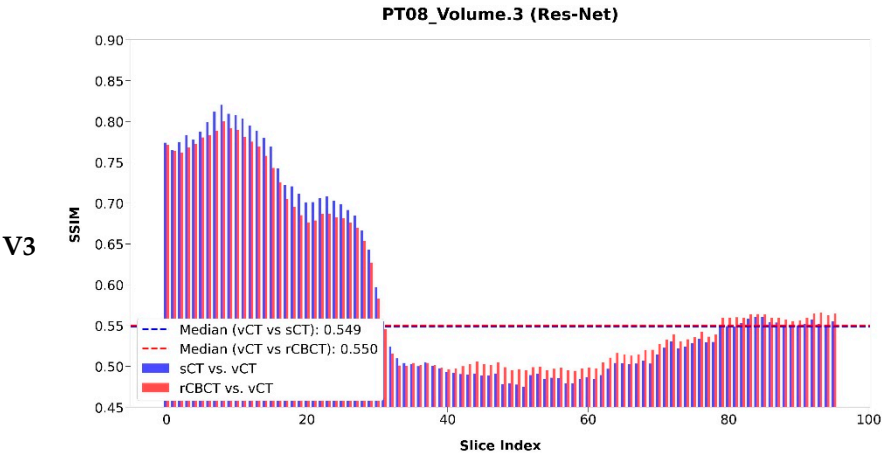
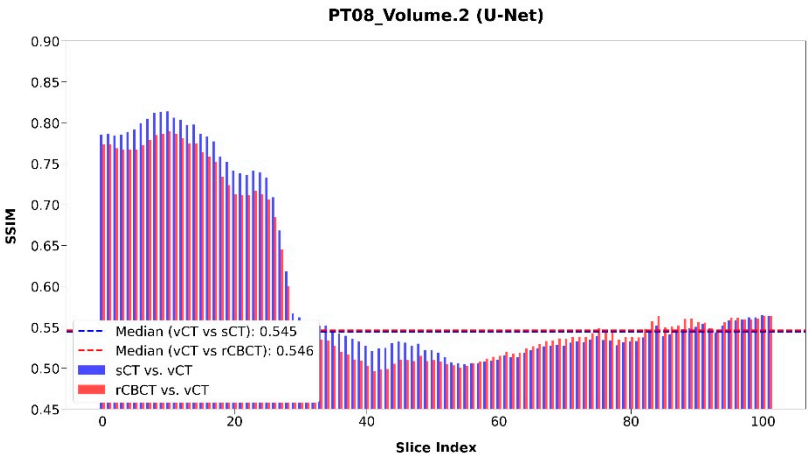
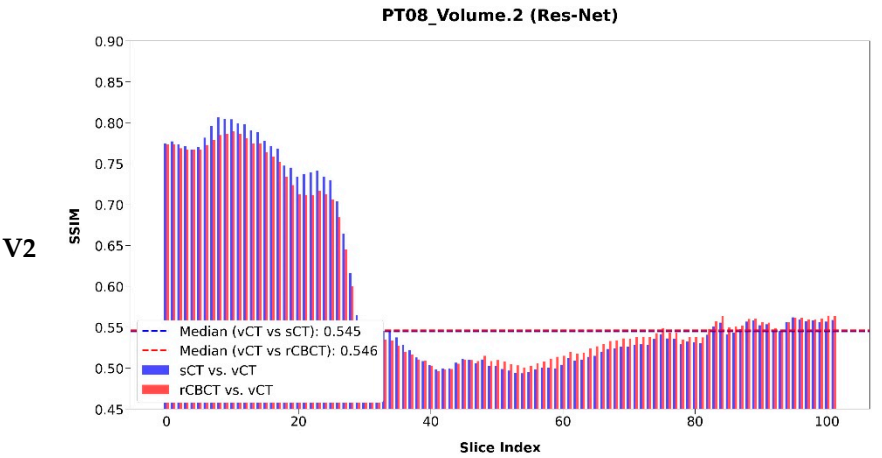
6

7

8

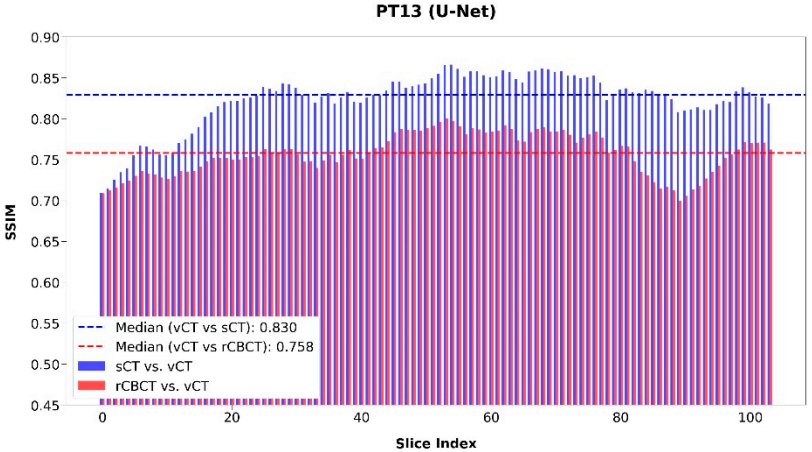
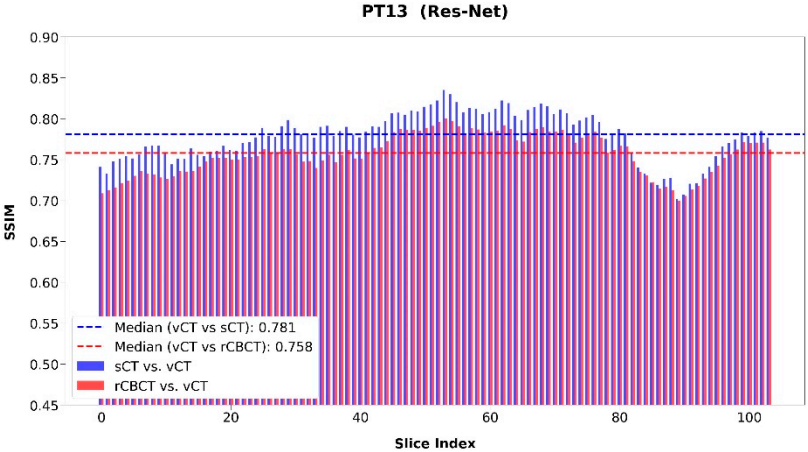




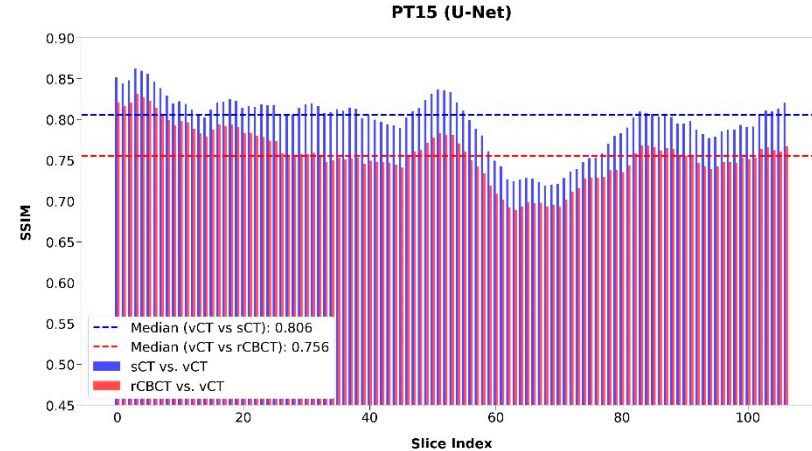
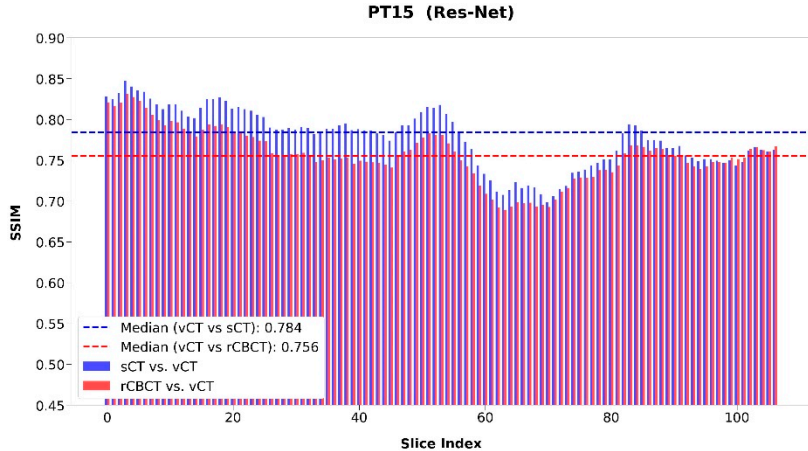




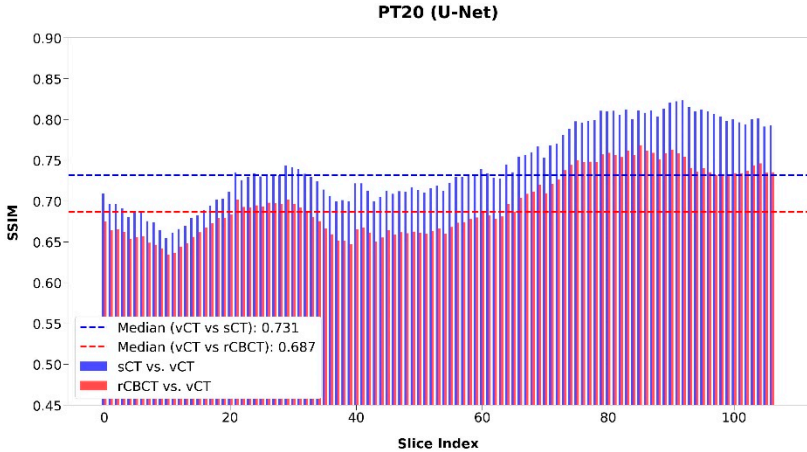
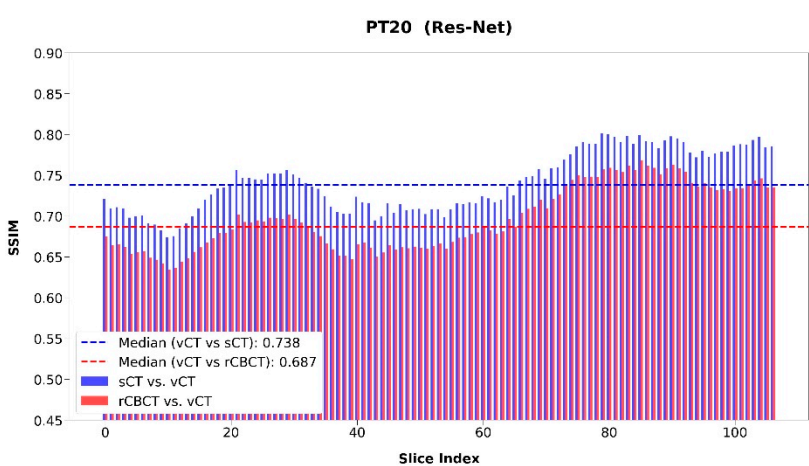
PT\_13



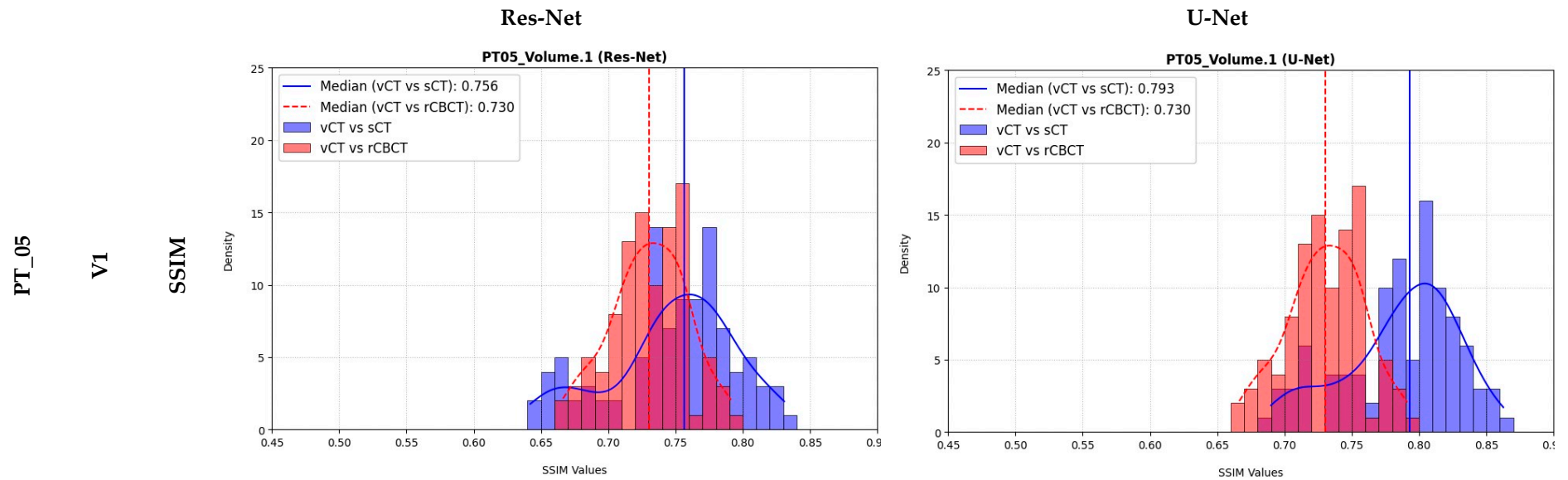
PT\_15

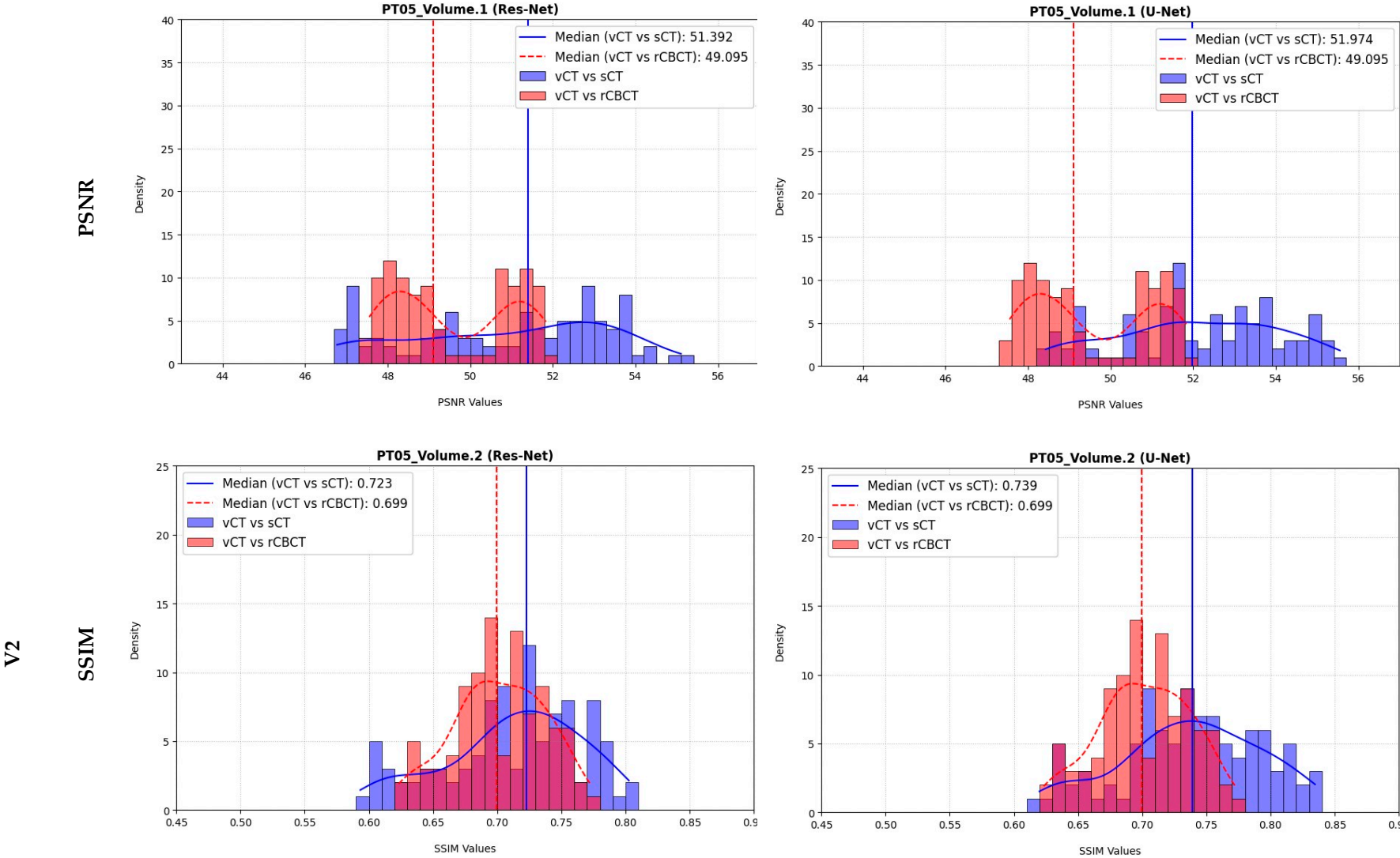


PT\_20



**Figure S3.** SSIM (up) and PSNR (down) values distribution before (vCT vs rCBCT) and after (vCT vs sCT) cycleGAN, for both architectures (Res-Net, left and U-Net, right). Median values are also reported.

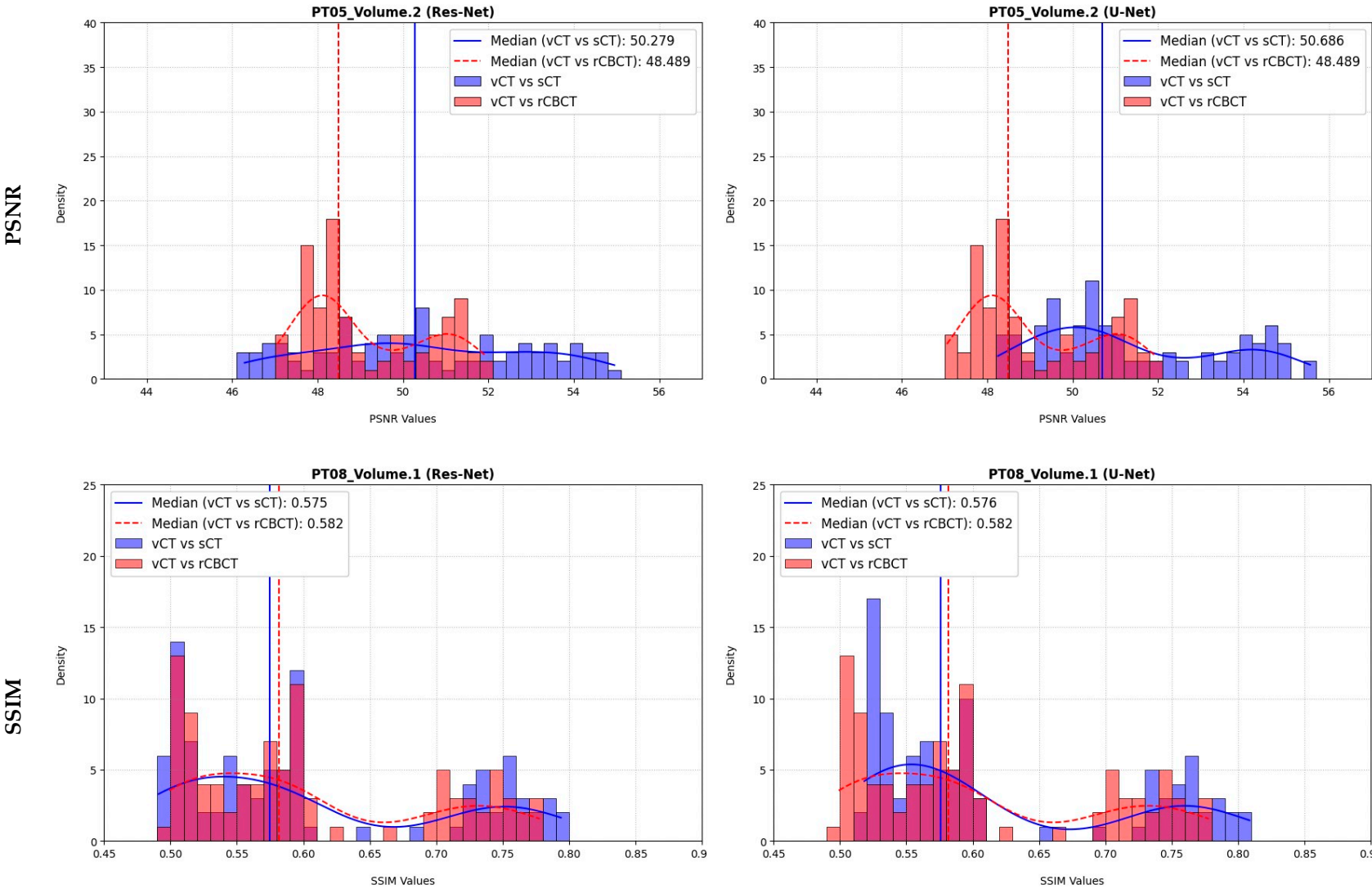


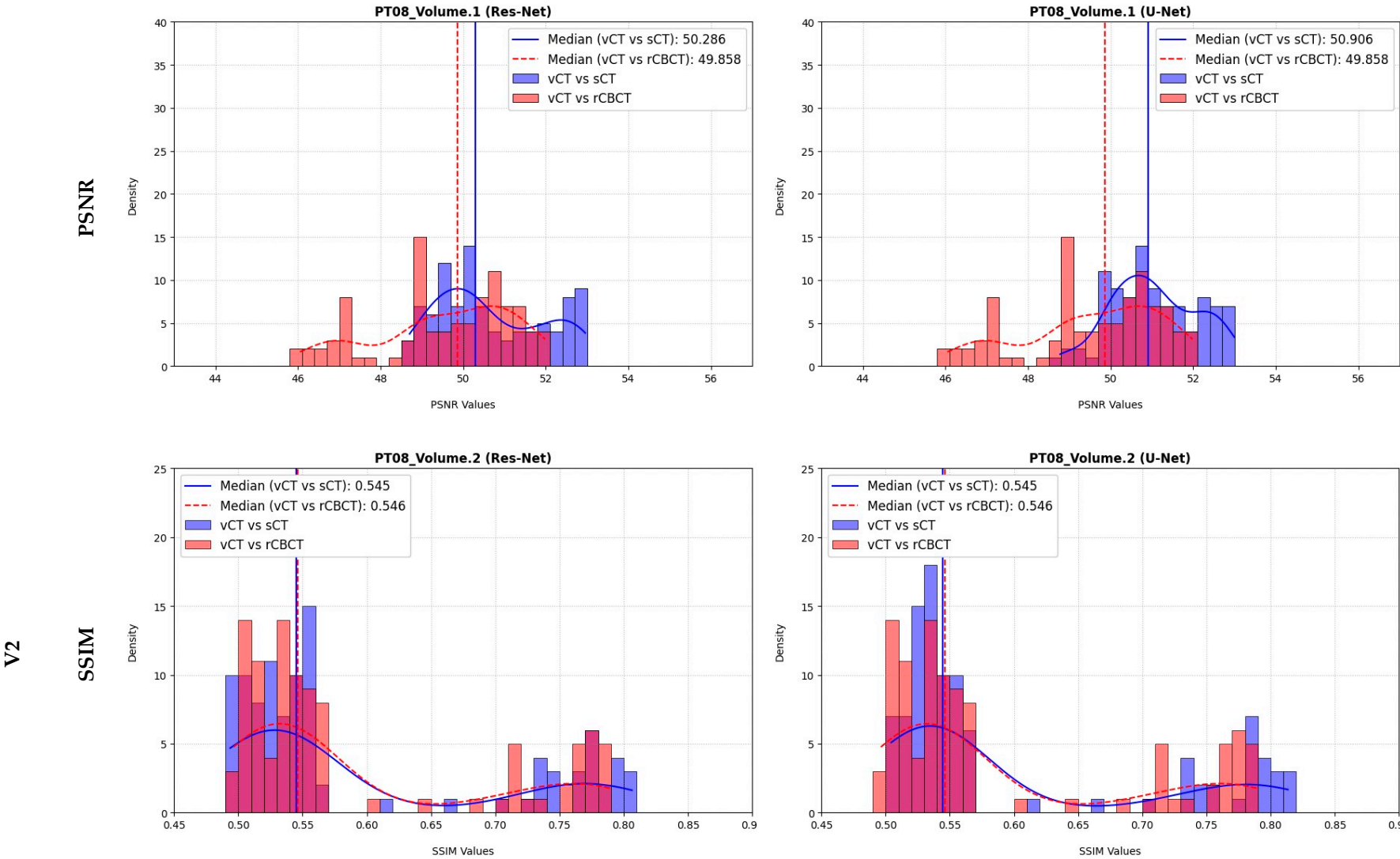


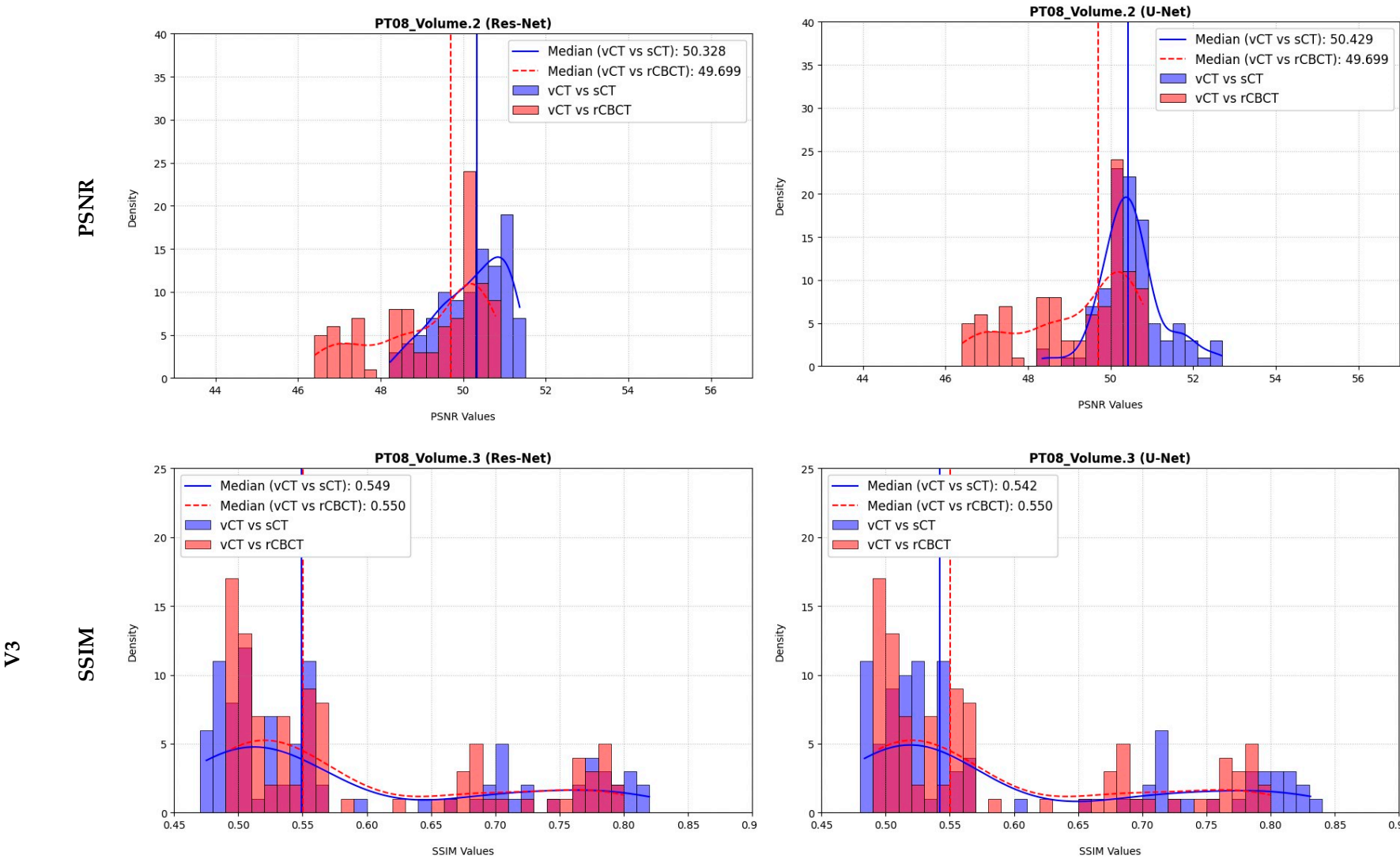
PT\_08

V1

SSIM

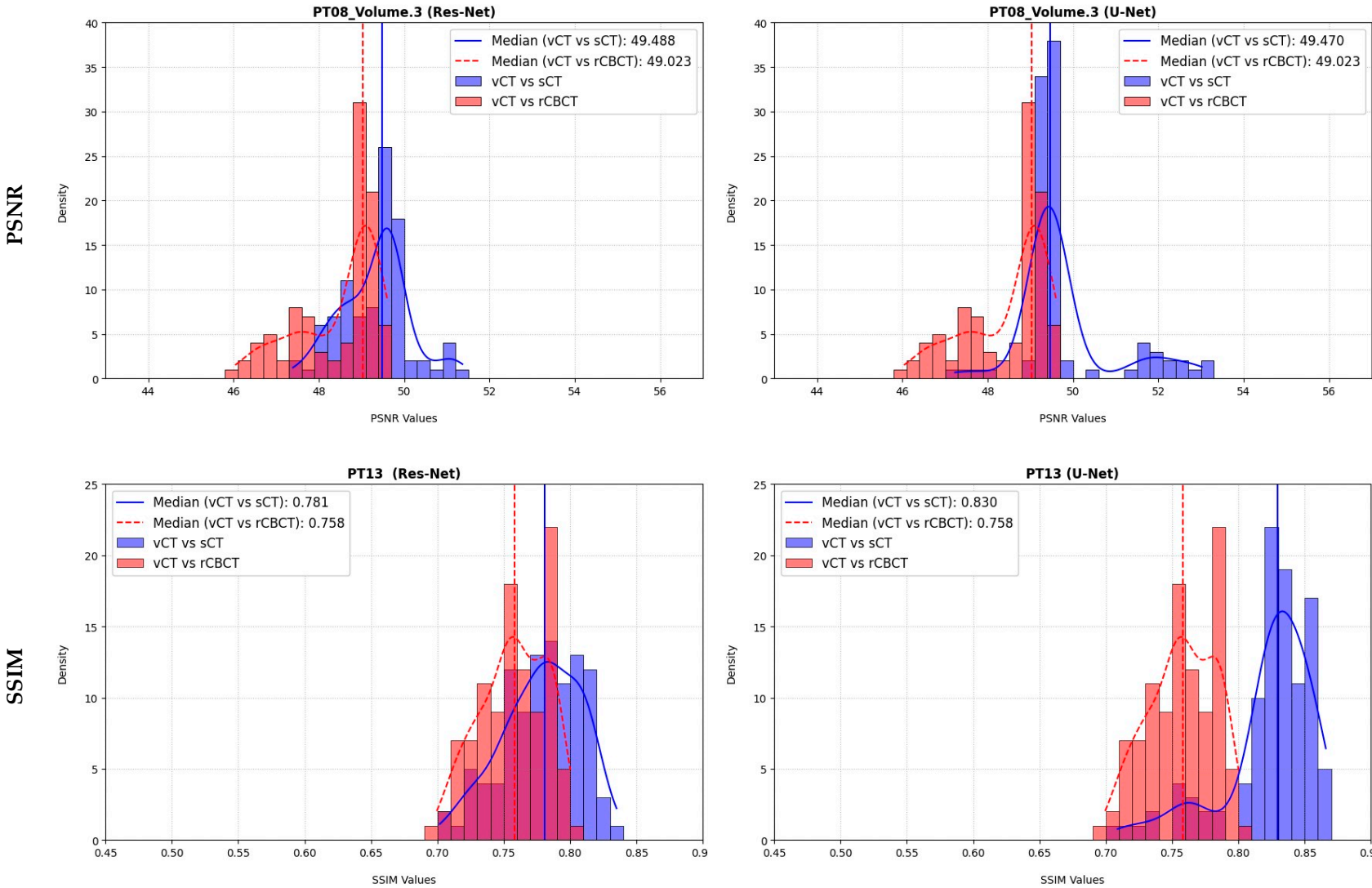






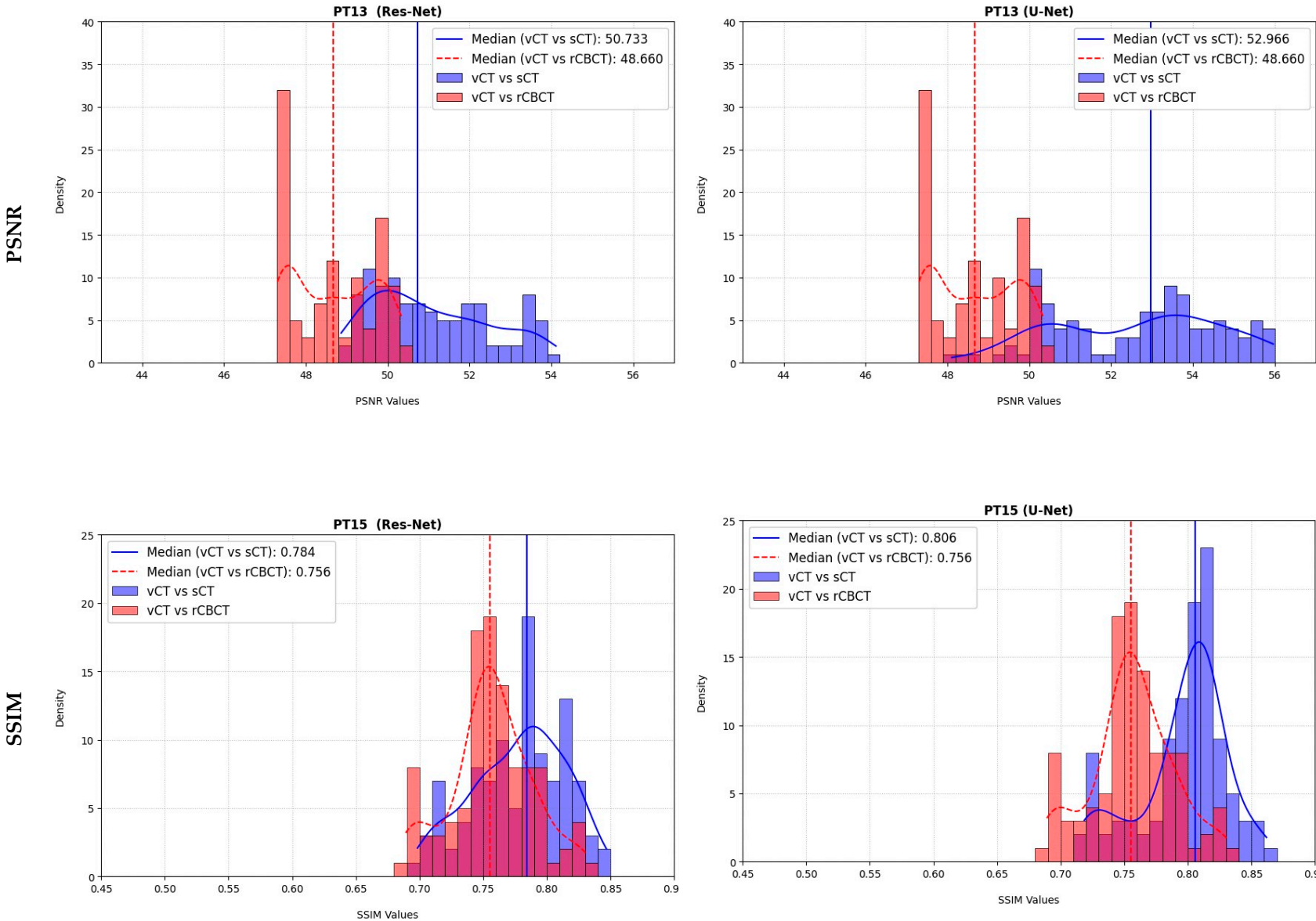


PT\_13





PT\_15



PT\_20

