

Supplementary Materials: In Search of Small Molecule Inhibitors Targeting the Flexible CK2 Subunit Interface

Benoit Bestgen, Zakia Belaid-Choucair, Thierry Lomberget, Marc Le Borgne, Odile Filhol and Claude Cochet

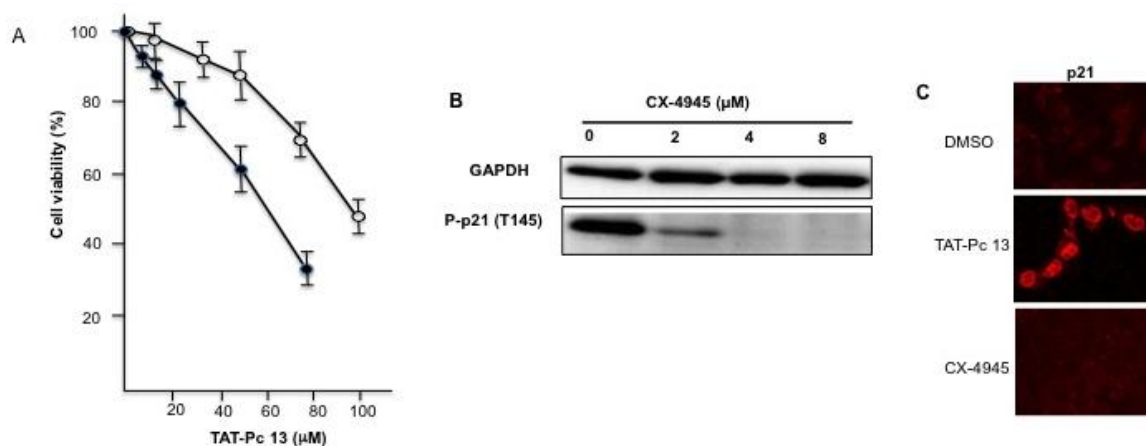


Figure S1. Cellular effects of TAT-Pc 13. (A) MDA MB-231 cells (•-•) or HeLa cells (○-○) were incubated for 6 h with increasing concentrations of TAT-Pc 13 and cell death was measured using the PrestoBlue assay as described in Material and Methods; (B) 786-O cells were treated for 12 h with increasing concentrations of CX-4945, lysed and analyzed by Western blot; (C) 786-O cells were treated with 20 μM TAT-Pc 13 or 5 μM CX-4945 and immunostained for p21 expression.

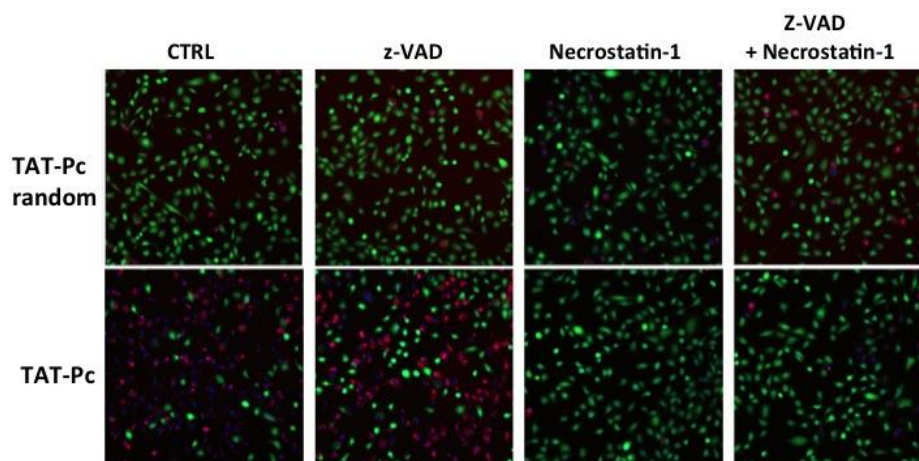


Figure 2. Inhibition of TAT-Pc-induced cell death. MCF-10A cells were pre-treated in the absence (CTRL) or presence of 20 μM z-VAD or 30 μM Necrostatin-1 or 20 μM z-VAD + 30 μM Necrostatin-1 for 5 h and then incubated for 4 h with 25 μM random TAT-Pc 13 or TAT-Pc 13 and cell viability was evaluated as in Figure 8A.