

Figure S1. LC-DAD-ESI-QTOF-MS/MS chromatogram fragile of the *Sanguisorba officinalis* L. flowers extract at 320 and 360 nm.

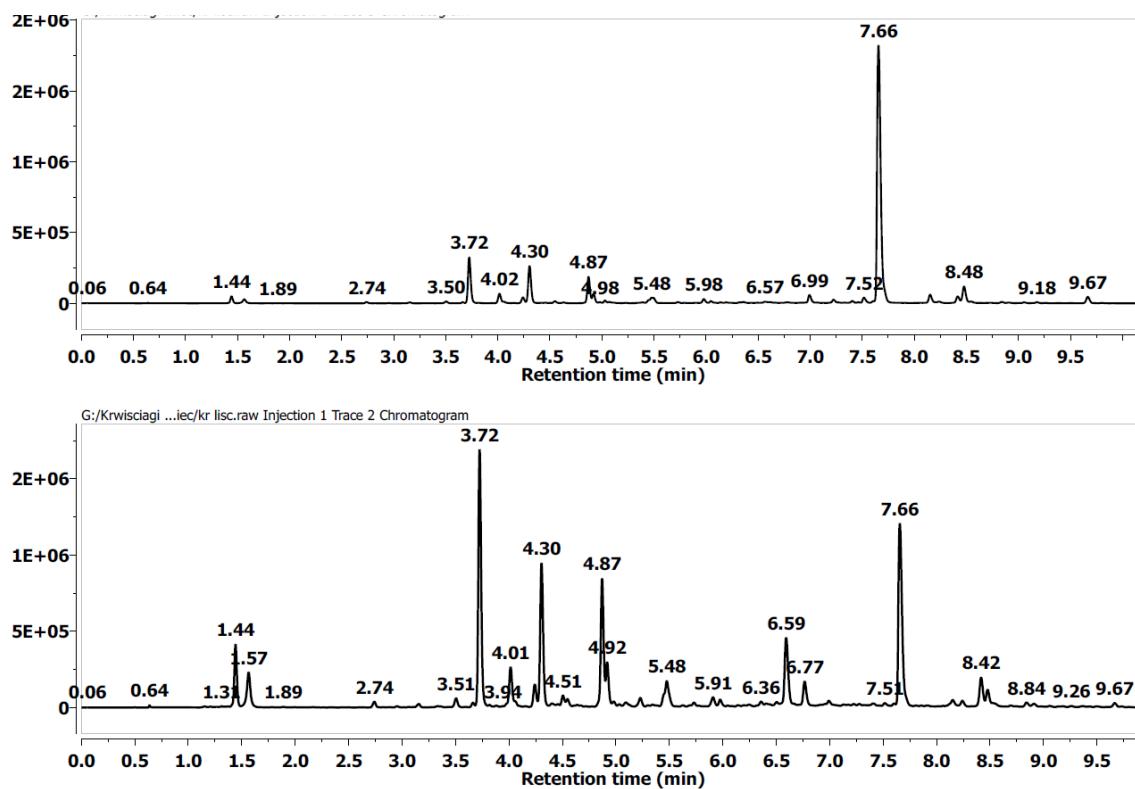


Figure S2. LC-DAD-ESI-QTOF-MS/MS chromatogram fragile of the *Sanguisorba officinalis* L. leaves extract at 320 and 360 nm.

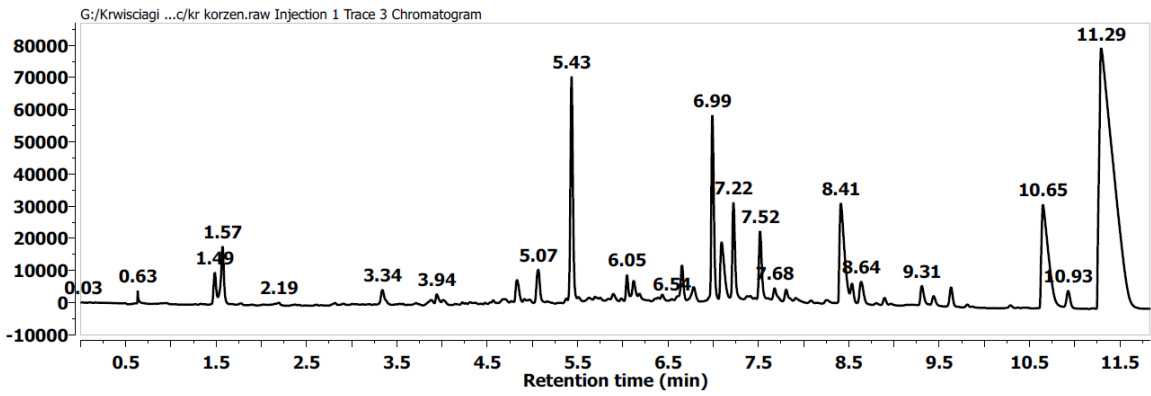
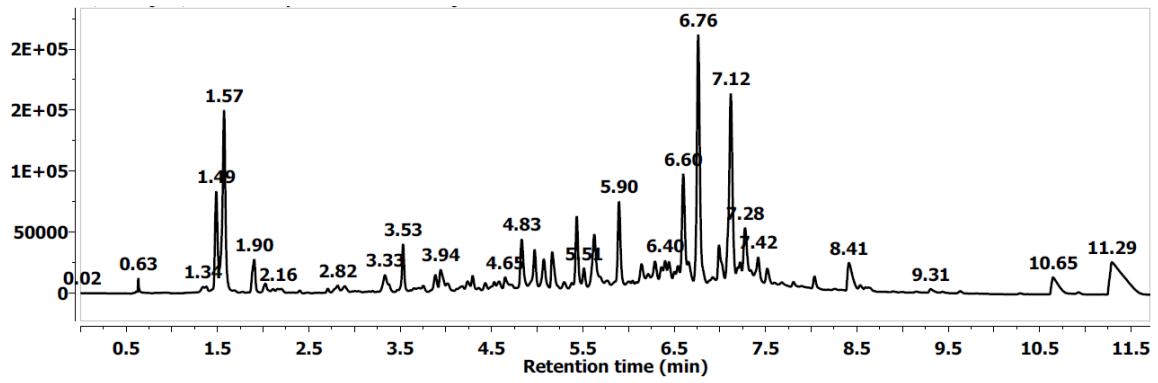


Figure S3. LC-DAD-ESI-QTOF-MS/MS chromatogram fragile of the *Sanguisorba officinalis* L. roots extract at 320 and 360 nm.

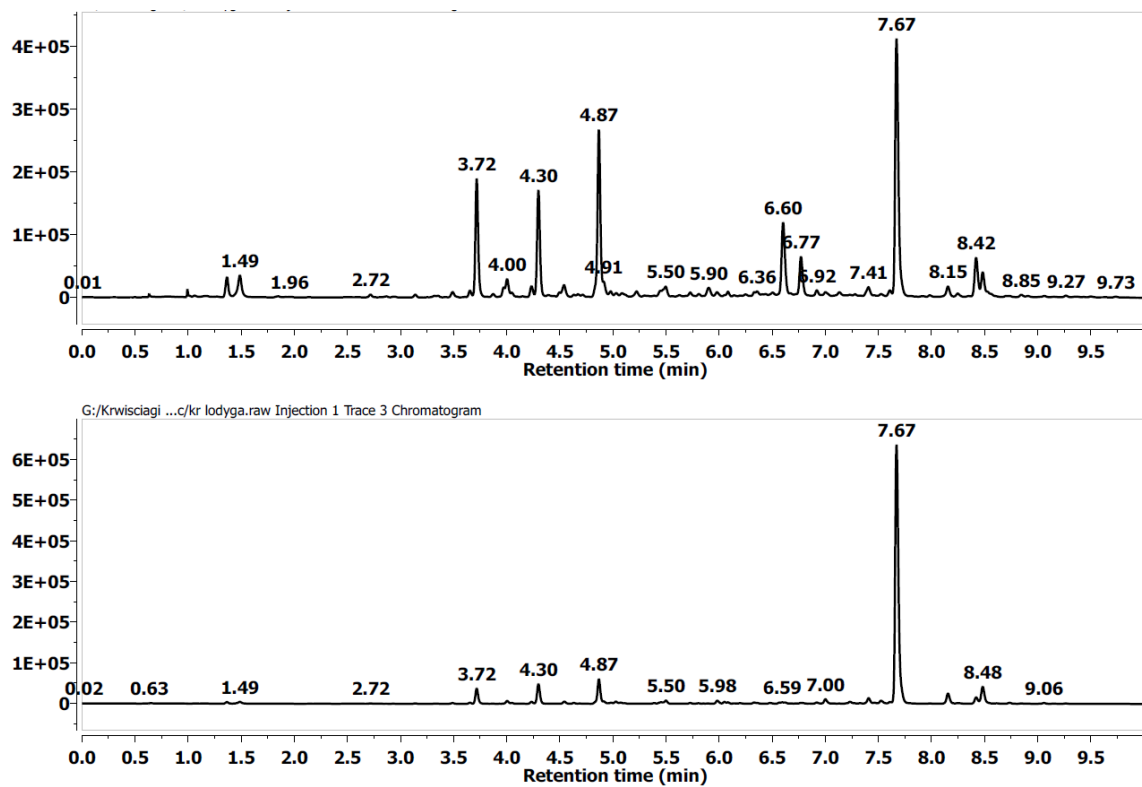


Figure S4. LC-DAD-ESI-QTOF-MS/MS chromatogram fragile of the *Sanguisorba officinalis* L. stalks extract at 320 and 360 nm.