

Figure S1. ARPE-19 and RF/6A cells phenotype in culture. (A) ARPE-19 cells were positive for RPE65 (green). (B) RF/6A cells were positive for lectin (red). Nuclei were stained with DAPI (blue). Scale bar: 20 μ m.

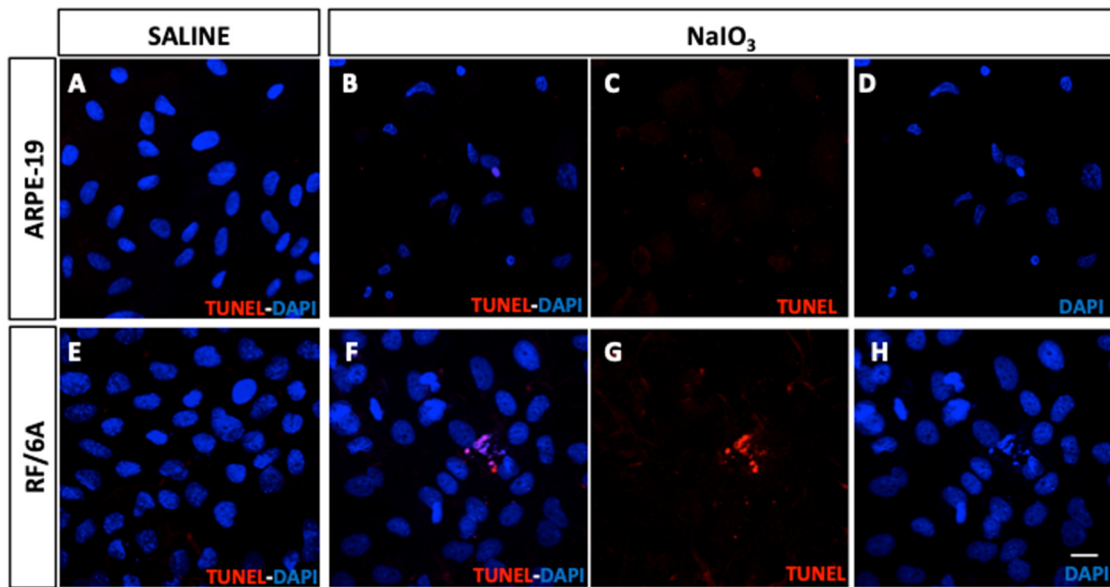


Figure S2. TUNEL assay in ARPE-19 and RF/6A. Saline (A and E) and sodium iodate (B-D and F-H) treated ARPE-19 (A-D) and RF/6A cells (E-H). Unmerged images are shown for sodium iodate treated samples to identify TUNEL signal (red, C and G) and DAPI (D and H). Scale bar: 20 μ m

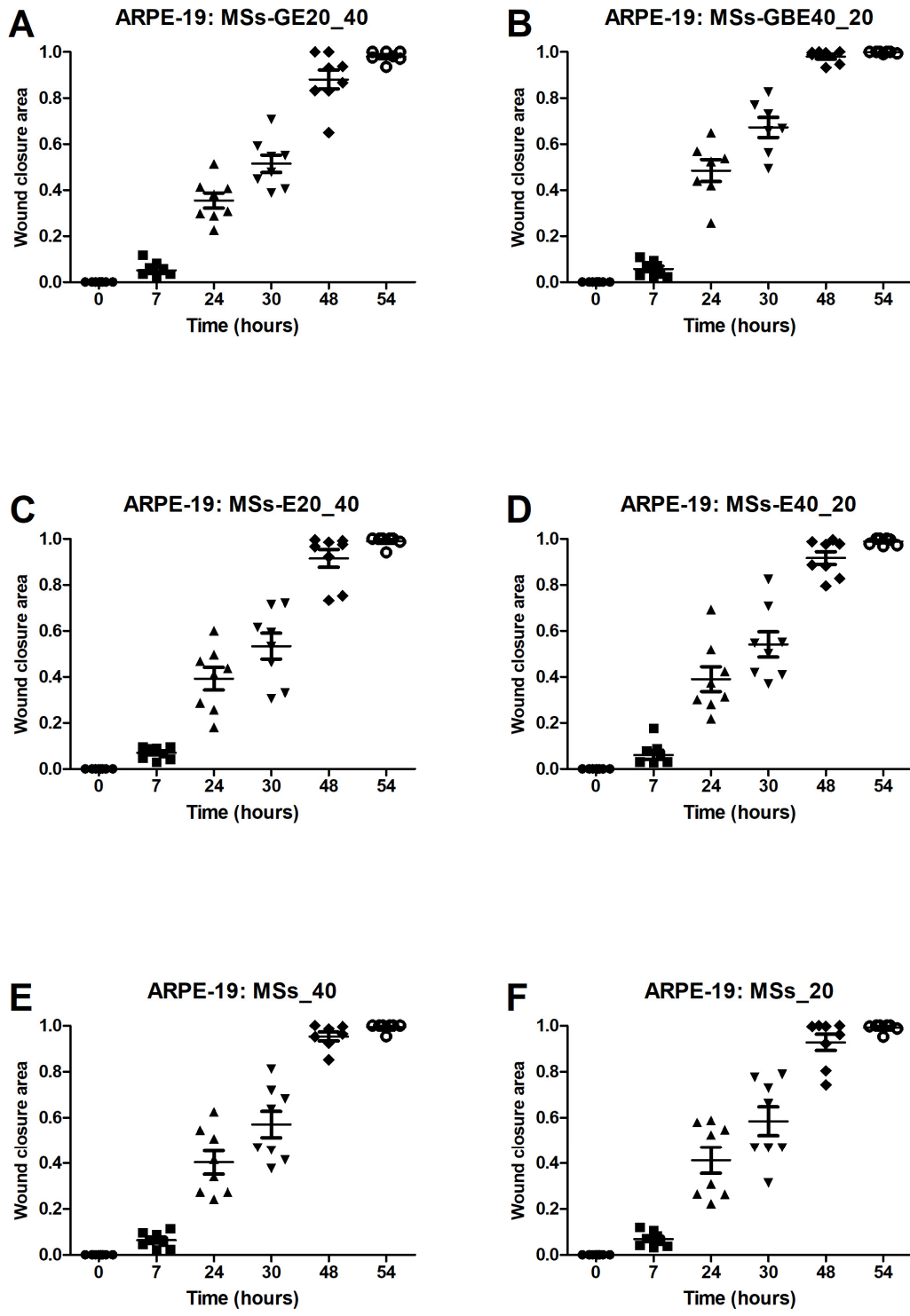


Figure S3. Wound healing assay in ARPE-19 cells. Scatter plot representation of wound closure area pattern in ARPE-19 cells (n=6-8) for the different study groups.

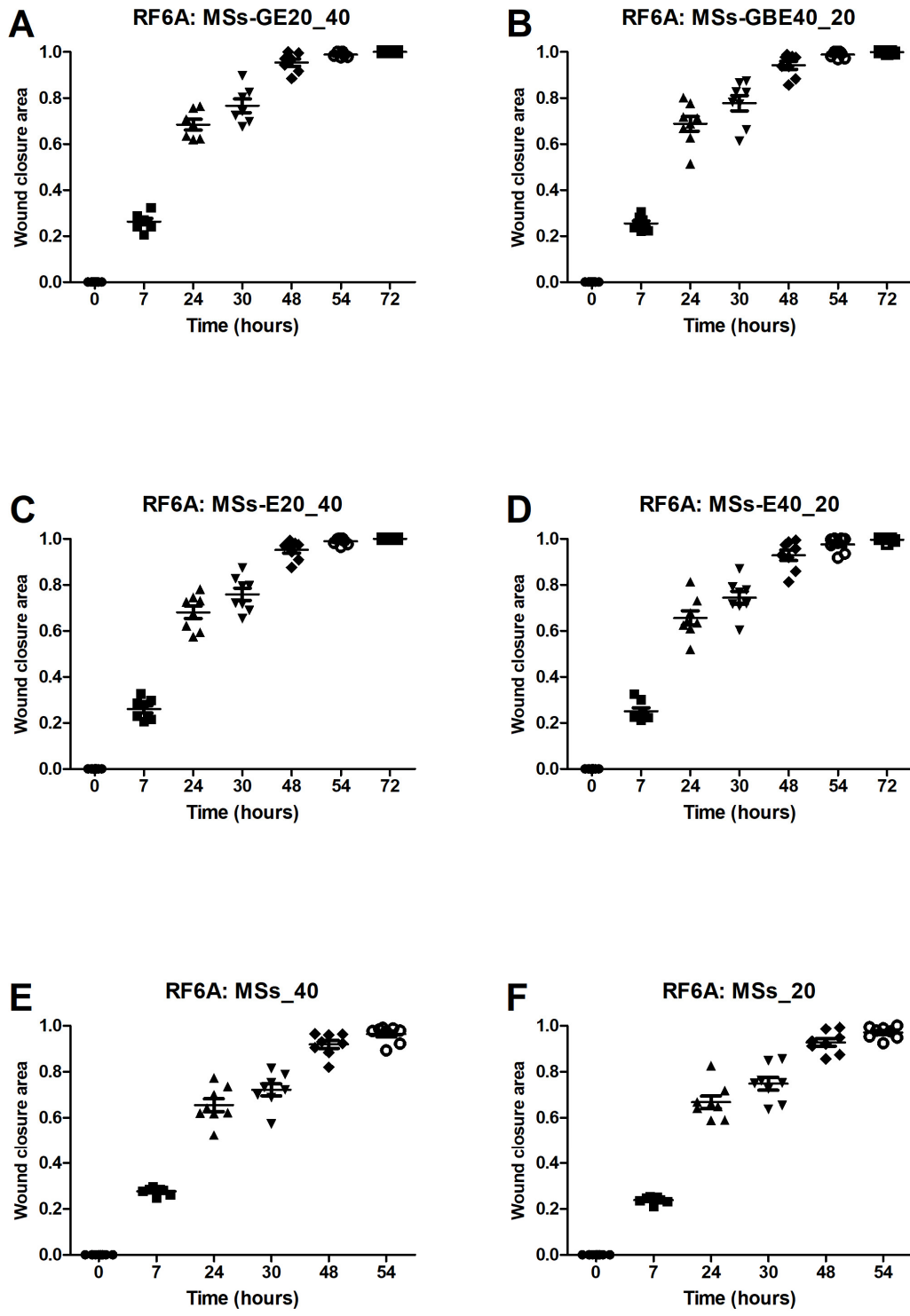


Figure S4. Wound healing assay in RF/6A cells. Scatter plot representation of wound closure area pattern in RF/6A cells (n=7-8) for the different groups of study.