

Supporting information

Investigation of the antibacterial activity and efflux pump inhibitory effect of *Cycas thouarsii* R.Br. extract against *Klebsiella pneumoniae* clinical isolates.

Walaa Negm¹, Mona El-Asar¹, Amal Abokamer², Engy Elekhawwy²

¹ Pharmacognosy department, faculty of pharmacy, Tanta University, Tanta, El Gharbia governorate, Egypt.

² Pharmaceutical microbiology department, faculty of pharmacy, Tanta University, Tanta, El Gharbia governorate, Egypt.

Table S1: Sequences of oligonucleotides utilized in RT-PCR

Tested genes	Primer*	Sequence
<i>norE</i>	F	5'-TCGCAGGACATCAGATTG-3'
	R	5'-CAGACACCCACCATAAGC-3'
<i>acrB</i>	F	5'-GAAGAGCACGCACCACTACAC-3'
	R	5'-GCAGACGCACGAACAGATAGG-3'
<i>mdfA</i>	F	5'-TTTATGCTTTCGGTATTGG-3'
	R	5'-GAGATTAAACAGTCCGTTGC-3'
<i>yihV</i>	F	5'- GGCTATCATCCTCGTCTTCC-3'
	R	5'- GCGTCATCCACCAGTAACC-3'
<i>gapA</i>	F	5'-GGACGAAGTTGGTGTGAC-3'
	R	5'-TTCTGAGTAGCGGTAGTAGC-3'

*F: forward, R: reverse

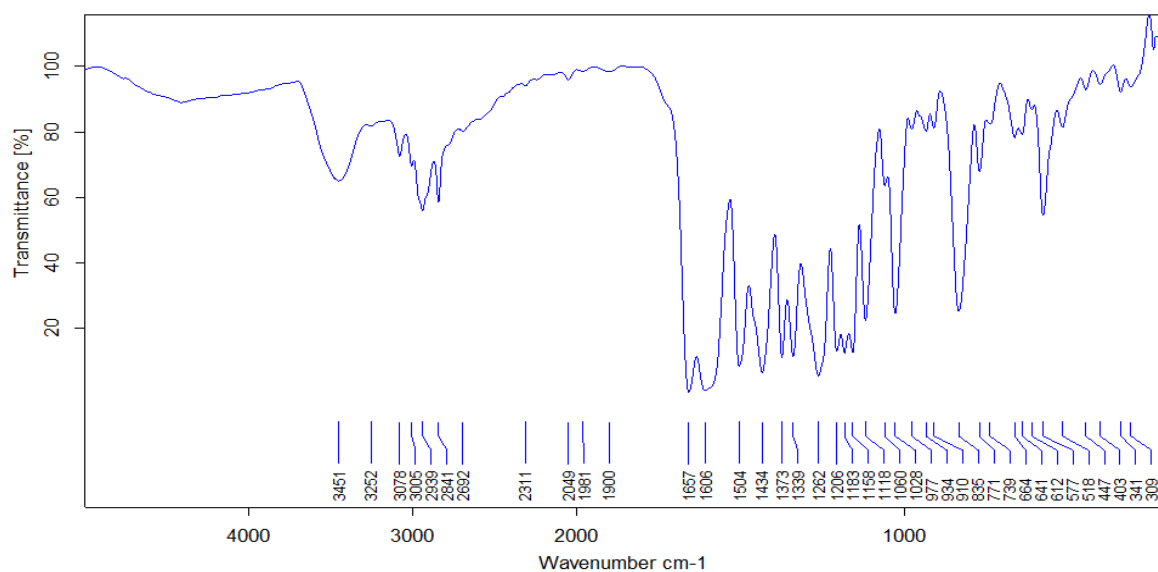


Figure S1. IR spectrum of compound 3

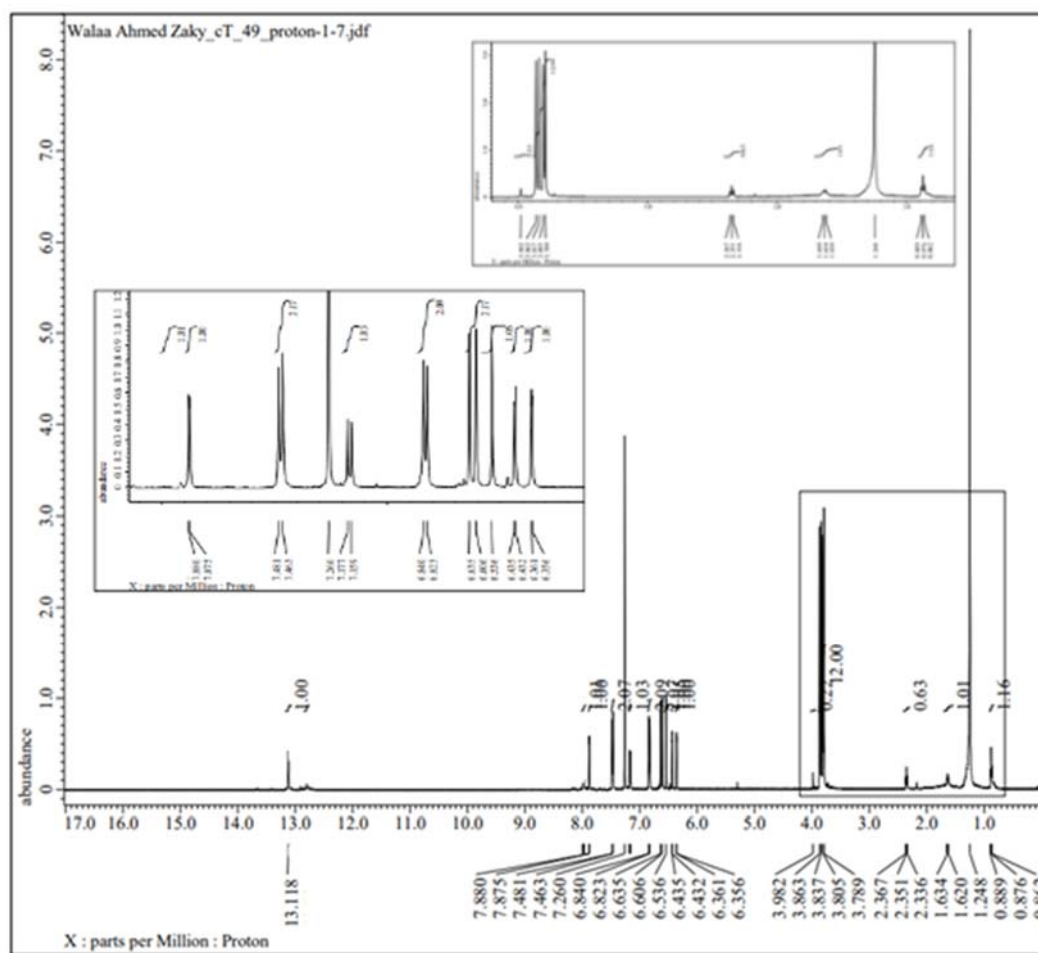


Figure S2. ¹H-NMR spectrum of compound 3

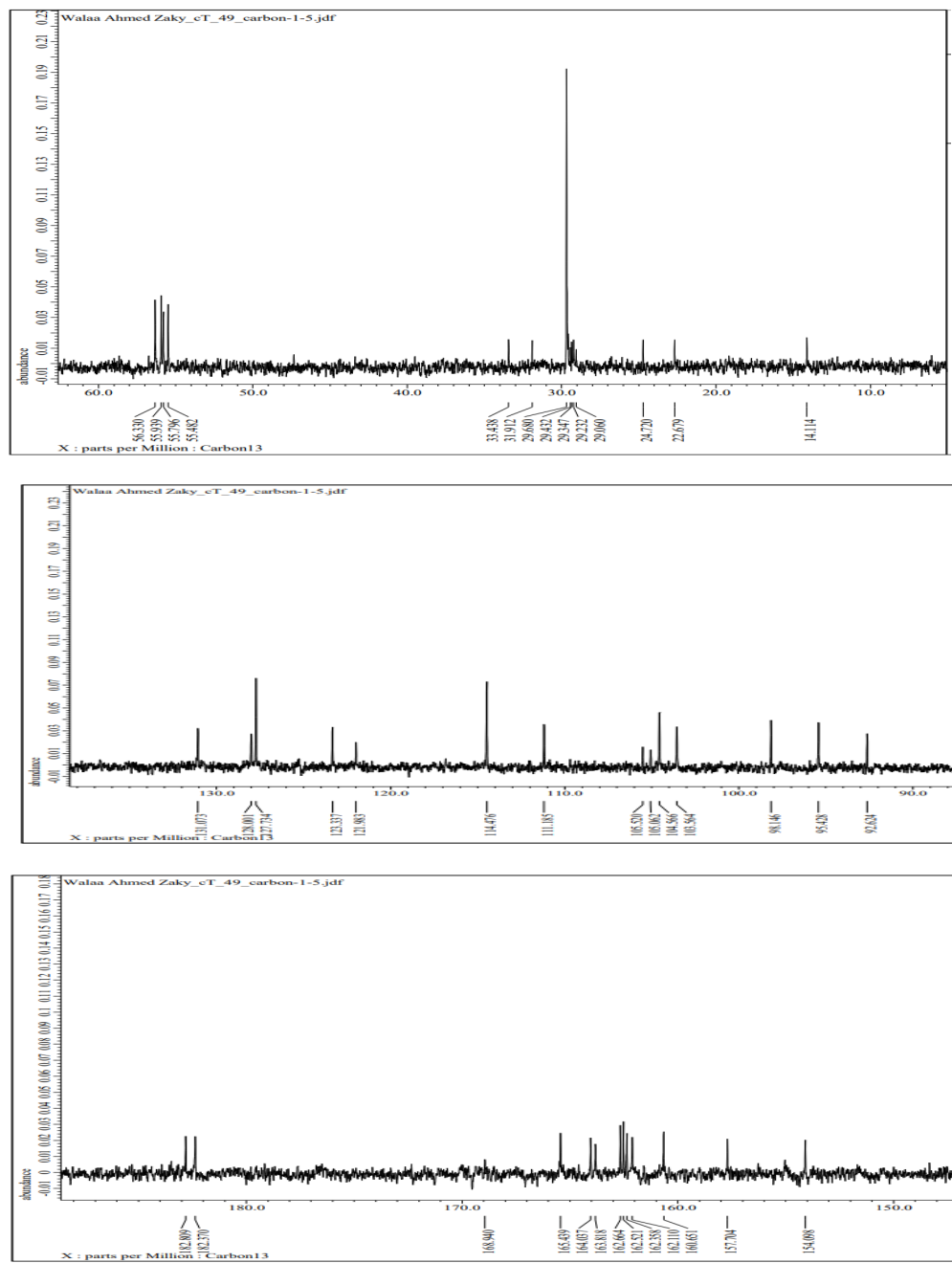


Figure S3. ^{13}C -NMR spectrum of compound 3

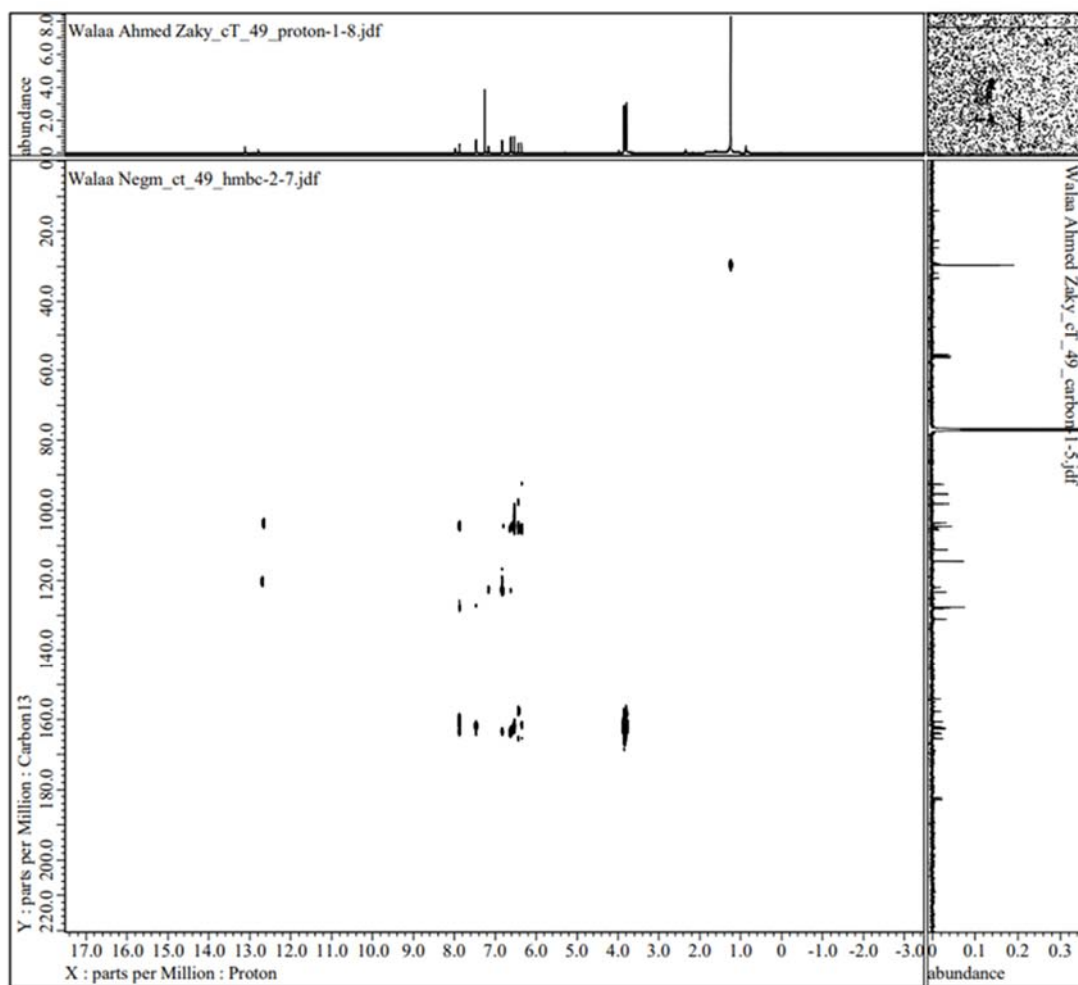


Figure S4. HMBC spectrum of compound 3

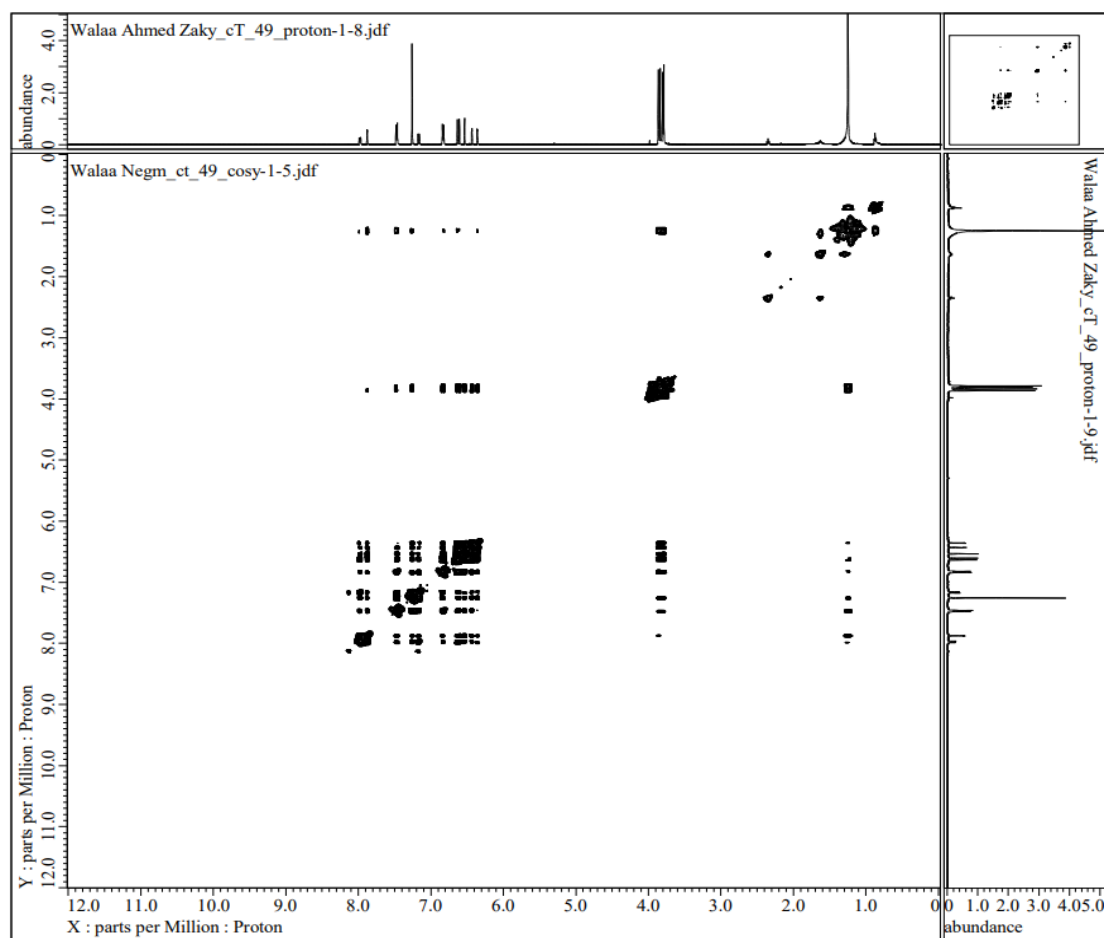


Figure S5. COSY spectrum of compound 3

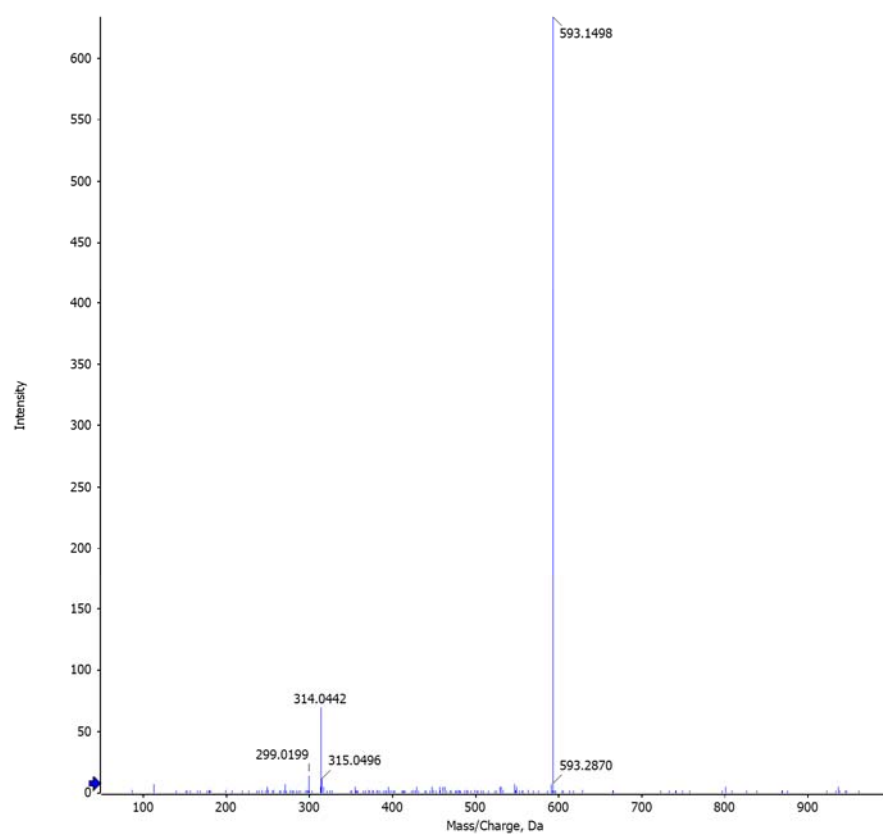
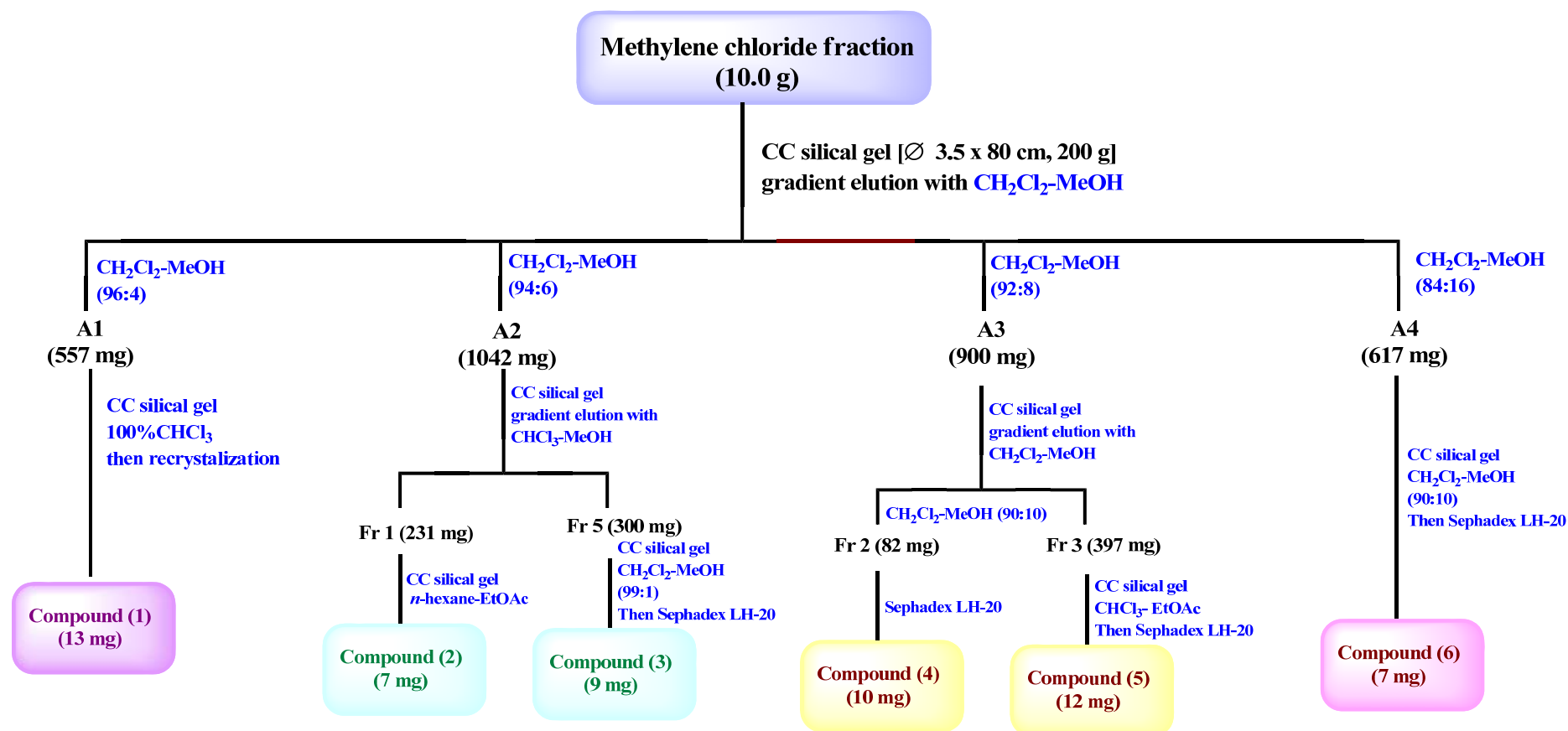


Figure S6. ESI mass spectrum of compound **3**



Scheme S1. Column chromatography of methylene chloride fraction of *Cycas thouarsii* leaves.