

Mitochondrion-targeted NIR therapeutic agent suppresses melanoma by inducing apoptosis and cell cycle arrest *via* E2F/Cyclin/CDK pathway

Changzhen Sun^{1†}, Jianv Wang^{2†}, Tong Xia², Qin Sun¹, Yijing He³, Hailan Wang¹, Qizhou He^{4*}, Li Liu^{2*}

¹ Drug Research Center of Integrated Traditional Chinese and Western Medicine, National Traditional Chinese Medicine Clinical Research Base, The Affiliated Traditional Chinese Medicine Hospital of Southwest Medical University, Luzhou, China.

² Department of Dermatology, The Affiliated Hospital of Southwest Medical University, Luzhou, China

³ Department of Science and Technology, The affiliated hospital of Southwest Medical University, Luzhou, China

⁴ Department of Radiology, The Affiliated Traditional Chinese Medicine Hospital of Southwest Medical University, Luzhou, China

[†] These authors contributed equally to this work.

* Corresponding author: liuli@swmu.edu.cn (L. Liu),
lyhqz0806@163.com (Q. He).

Tel: +86-193-3860-9127 (L. Liu); +86-159-0836-2735 (Q. He)

Table S1. Primer sequences for RT-qPCR assay.

	Primer Name	Sequence (5'-3')
108961	<i>E2f8-F</i>	GCTCTGAAGGAGGATTGACAGG
	<i>E2f8-R</i>	ATGCAGGGGGCTTTTCATCA
52679	<i>E2f7-F</i>	GATGCGTTCGTGAACTCCCTG
	<i>E2f7-R</i>	CCGACGACACGGTCTTCAAAGA
12544	<i>Cdc45-F</i>	CCGGCAACAAGGAACCAATC
	<i>Cdc45-R</i>	GGCGGATACCTAGAACTGGC
12428	<i>Ccna2-F</i>	GAGCTCCCAAGCTCTACTGC
	<i>Ccna2-R</i>	TTTTCATGGGCAGTCCTGGT
12534	<i>Cdk1-F</i>	AAGTGTGGCCAGAAGTCGAG
	<i>Cdk1-R</i>	TCGTCCAGGTTCTTGACGTG
20135	<i>Rrm2-F</i>	TGATGCCGGGCCTTACATT
	<i>Rrm2-R</i>	CCTGCTCTATCCTAACGGCG
12433	<i>Ccnd1-F</i>	CAGCCCCAACAACCTCCTCT
	<i>Ccnd1-R</i>	CAGGGCCTTGACCGGG
12567	<i>Cdk4-F</i>	CTTAGCCGAGCGTAAGGCTG
	<i>Cdk4-R</i>	CCAGGCCGCTTAGAAACTGA
12447	<i>Ccne1-F</i>	GACACAGCTTCGGGTCTGAG
	<i>Ccne1-R</i>	CTGGAGCGGACTGAAAGGTC

12566	<i>Cdk2-F</i>	CGGCTCGACACTGAGACTG
	<i>Cdk2-R</i>	TTCTTGAGGTCCTGGTGACG
12575	<i>P21-F</i>	CAGAATAAAAGGTGCCACAGGC
	<i>P21-R</i>	CGTCTCCGTGACGAAGTCAA
12576	<i>P27-F</i>	CAGACGTAAACAGCTCCGAATTA
	<i>P27-R</i>	GGCAGATGGTTTAAGAGTGCC

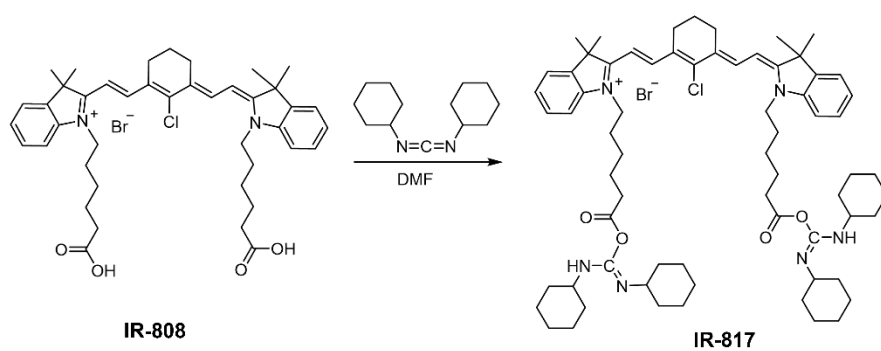


Figure S1. The synthetic route of IR-817.

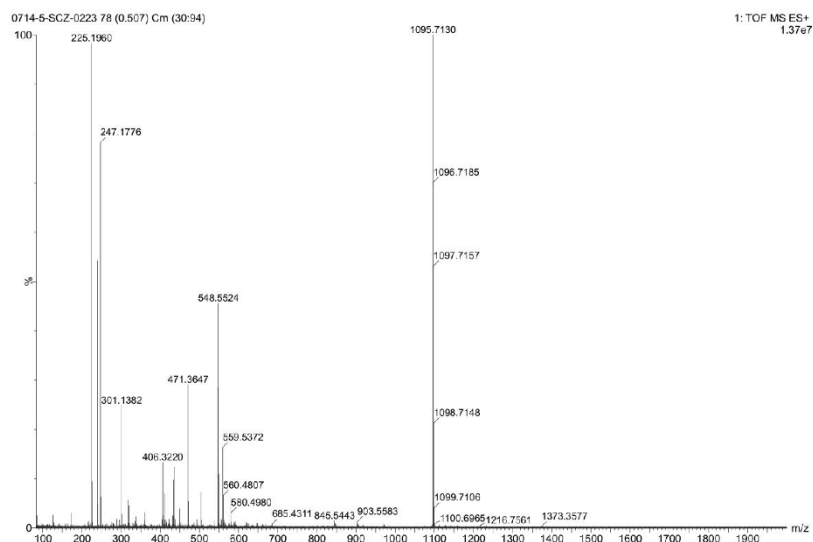


Figure S2. HRMS spectrum of IR-817.

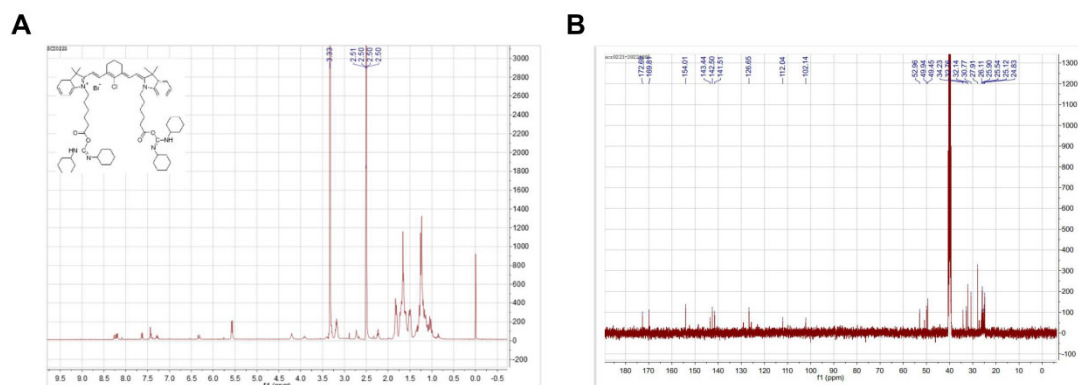


Figure S3. ^1H NMR and ^{13}C NMR spectrum of IR-817.

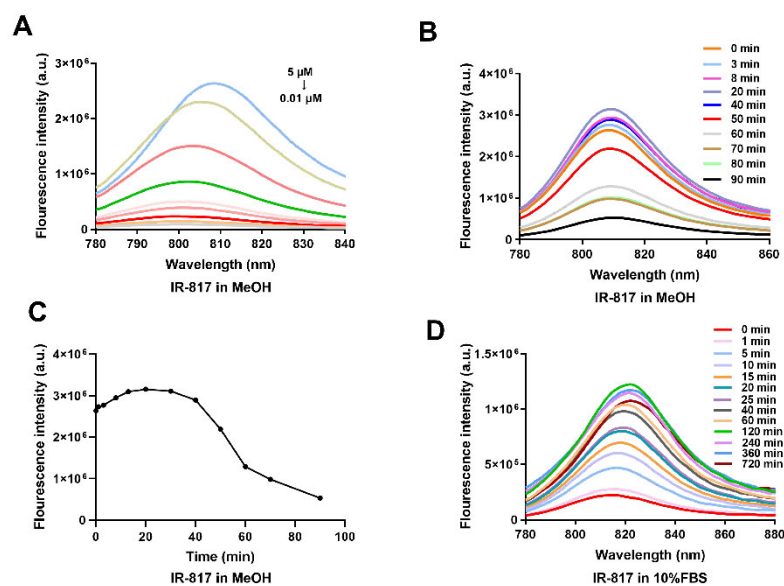
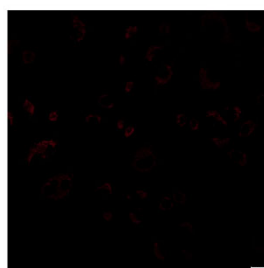


Figure S4. (A) The fluorescence intensity was plotted versus with different concentration (0.01-5 μM) of IR-817 in MeOH. (B) Fluorescence intensity of 5 μM IR-817 in MeOH over time. (C) Fluorescence instability of IR-817 in MeOH. (D) Fluorescence intensity of 5 μM IR-817 in 10% FBS over time.



A549

Figure S5. Fluorescence image of 5 μM IR-817 co-incubated with A549 cells for 1 h. Scale.

bars, 20 μm .

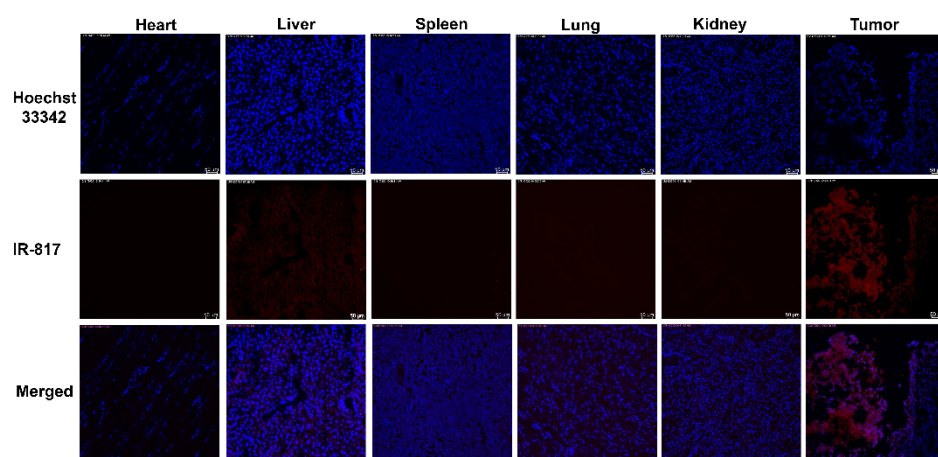


Figure S6. C57BL/6J mice with B16-F10 subcutaneous tumor xenografts were subjected to histopathologic analysis after a single-dose intravenous administration of IR-817 at 5 mg/kg for 12 h. Organs and xenografts were imaged by fluorescence microscope. Scale bars, 50 μm .

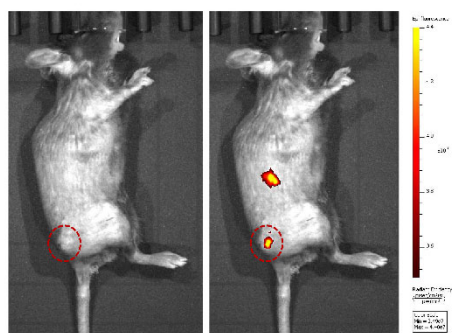


Figure S7. *In vivo* imaging of the subcutaneous tumor mice model after tail vein injection 48 h of IR-817 (5mg/kg).

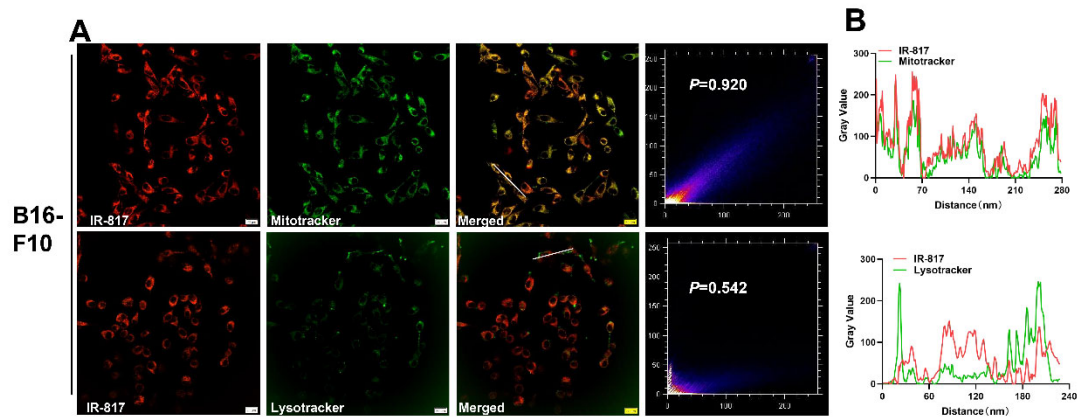


Figure S8. (A) Fluorescence co-localization of IR-817 and Mitotracker Green or Lysotracker Green in B16-F10 cells. (B) Normalized intensity profiles of co-localized image along the pixels marked by the solid line.

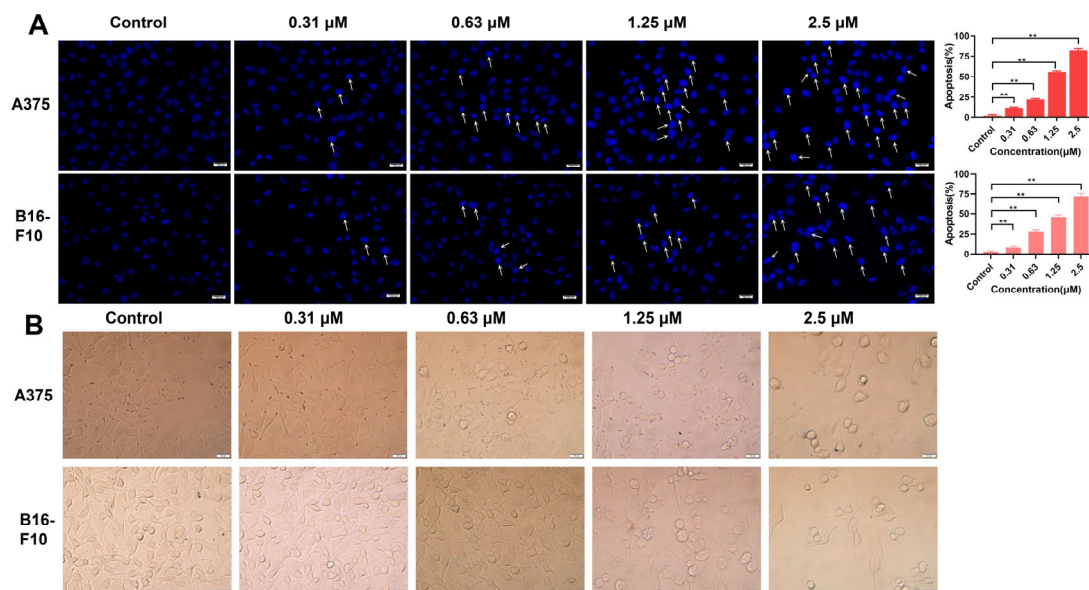


Figure S9. (A) The nuclear changes of A375, B16-F10 were observed after Hoechst 33342 staining ($\times 400$ magnification, scale bar = 100 μ m). The arrow refers to apoptotic cells. Each value was mean \pm SD, $n = 3$. ** $p < 0.01$. (B) Photographs showing morphological changes in A375 and B16-F10 cells with different concentrations of IR-817 for 24 h.

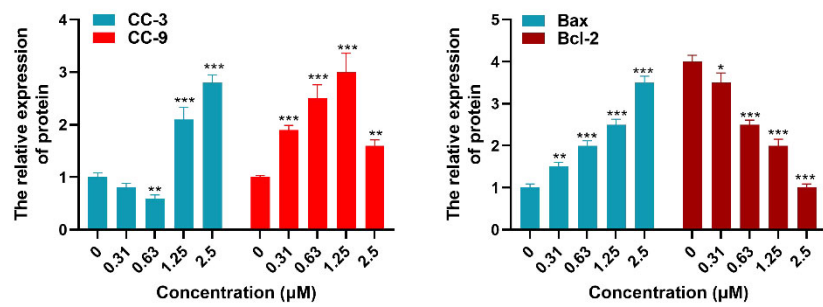


Figure S10. Relative protein expression levels of CC-3, CC-9 (35KDa), Bax and Bcl-2 in B16-F10 cells after different treatments analyzed from Western blotting were shown in each bar. Each value was mean \pm SD, $n = 3$. *** $p < 0.001$, ** $p < 0.01$, * $p < 0.05$.

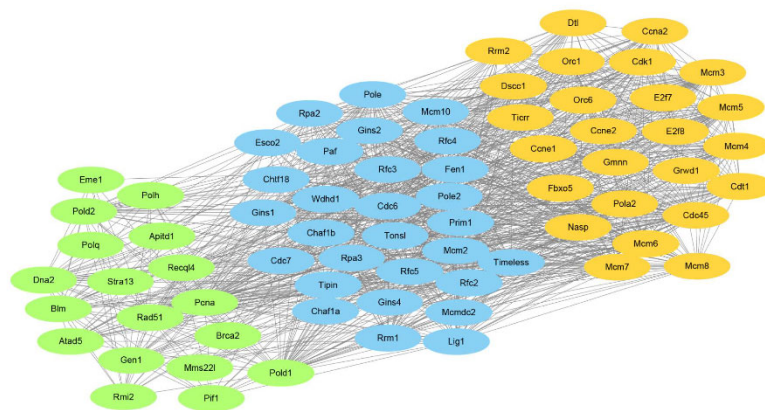


Figure S11. The PPI network complex of the 72 genes in the DNA repair pathway. The nodes meant proteins; the edges meant the interaction of proteins; three major clusters were identified by MCODE plug-in and labeled by green, blue and orange colors.

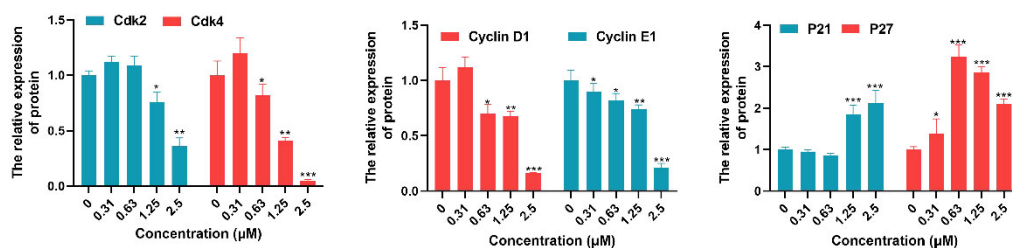


Figure S12. Relative protein expression levels of Cdk2, Cdk4, Cyclin D1, Cyclin E, P21 and P27 in B16-F10 cells after different treatments analyzed from Western blotting were shown in each bar. Each value was mean \pm SD, $n = 3$. *** $p < 0.001$, ** $p < 0.01$, * $p < 0.05$.