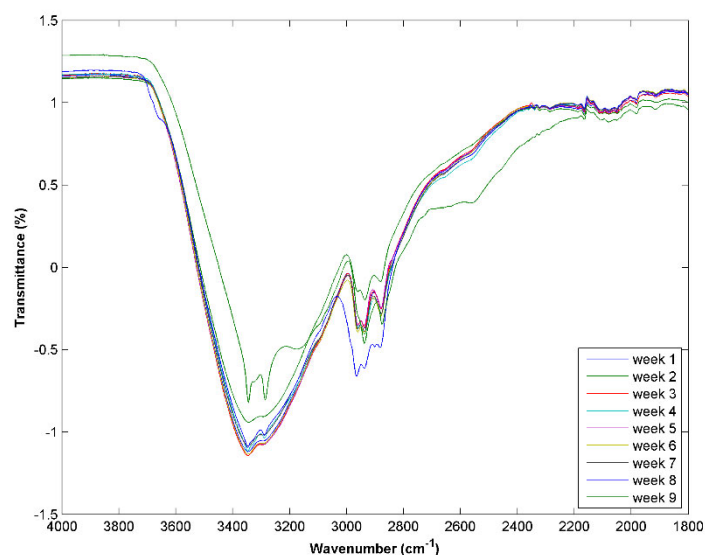


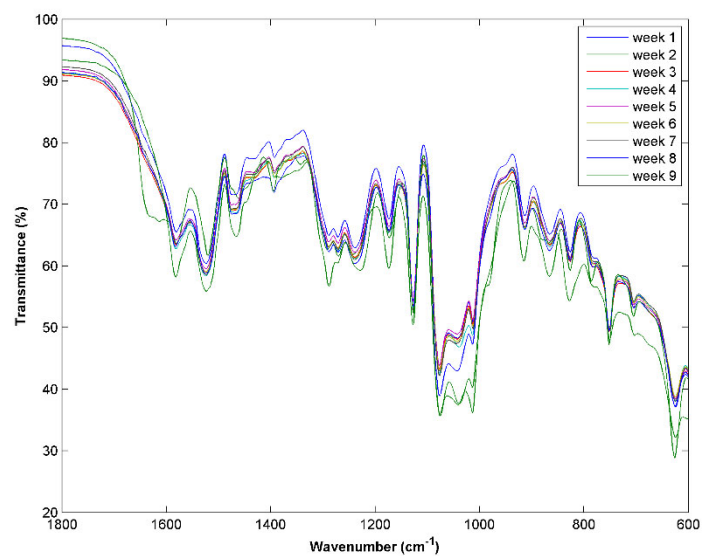
## Supporting Information

# Solids turn into liquids. Liquid Eutetic Systems of pharmaceuticals to improve drug solubility

*Mafalda Sarraguça, Paulo R. S. Ribeiro Cláudia Nunes, Catarina Leal Seabra*

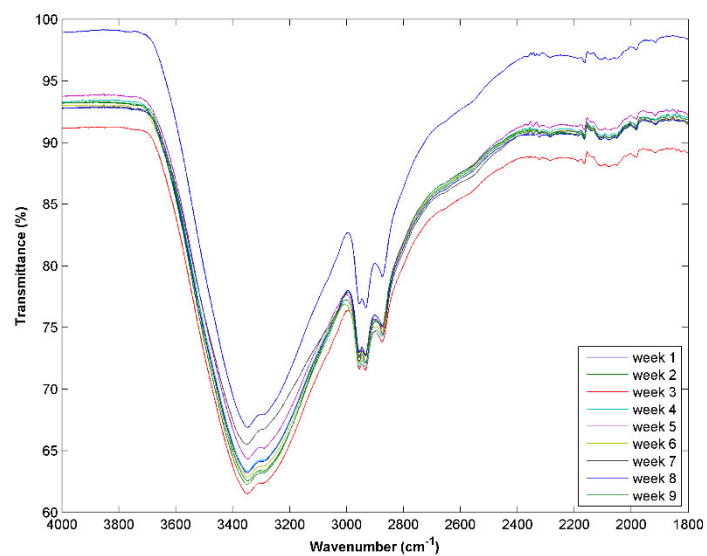


(a)

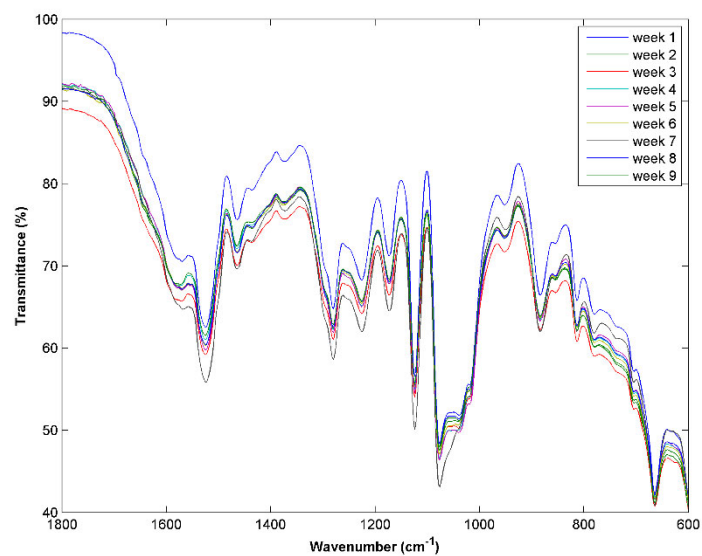


**(b)**

**Figure S1.** MIR spectra for the CLP-THEDES made for 9 weeks (once a week) to study its stability at room temperature **(a)** spectral range between 4000  $\text{cm}^{-1}$  and 1800  $\text{cm}^{-1}$ ; **(b)** spectral range between 1800  $\text{cm}^{-1}$  and 600  $\text{cm}^{-1}$ .

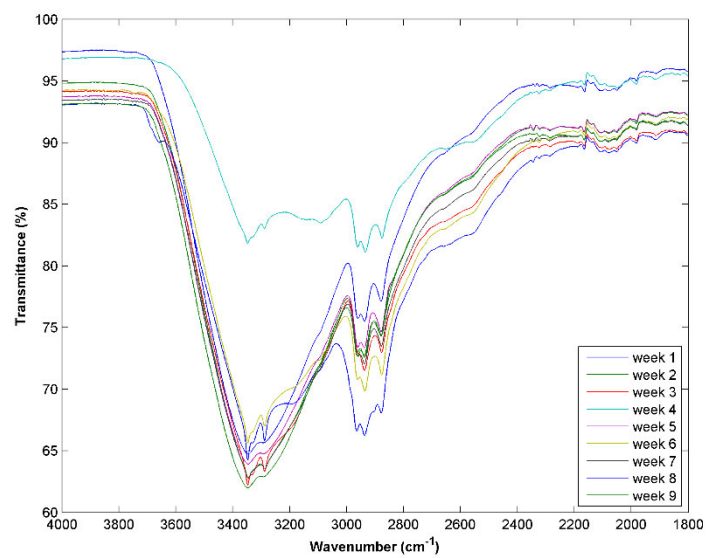


(a)

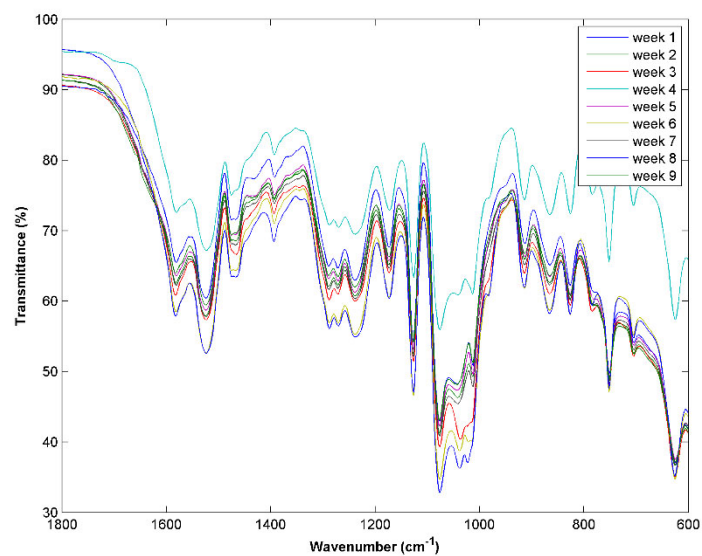


(b)

**Figure S2.** MIR spectra for the TLB-THEDES made for 9 weeks (once a week) to study its stability at room temperature **(a)** spectral range between 4000  $\text{cm}^{-1}$  and 1800  $\text{cm}^{-1}$ ; **(b)** spectral range between 1800  $\text{cm}^{-1}$  and 600  $\text{cm}^{-1}$ .

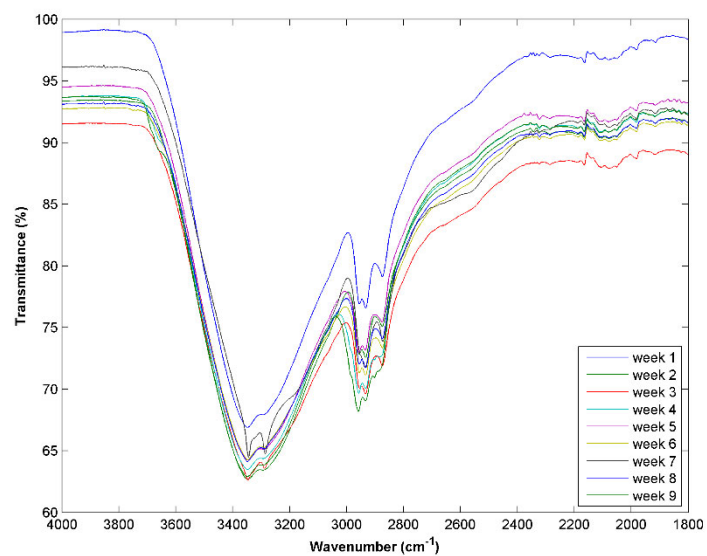


(a)

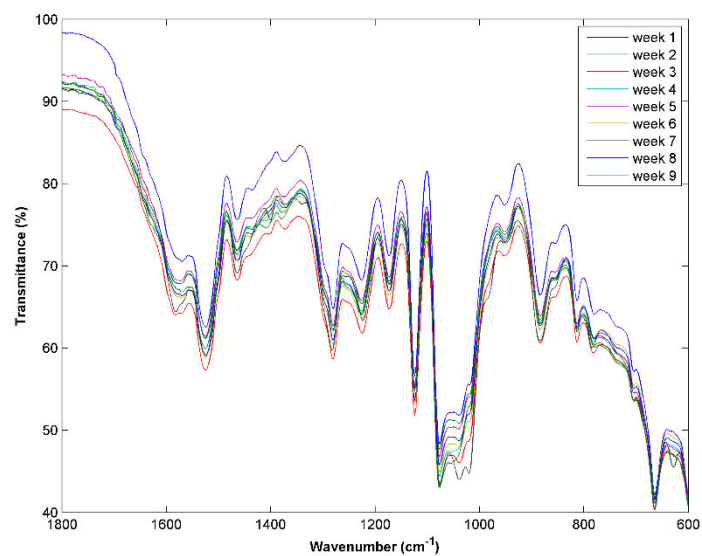


(b)

**Figure S3.** MIR spectra for the CLP-THEDES made for 9 weeks (once a week) to study its stability at 40°C **(a)** spectral range between 4000  $\text{cm}^{-1}$  and 1800  $\text{cm}^{-1}$ ; **(b)** spectral range between 1800  $\text{cm}^{-1}$  and 600  $\text{cm}^{-1}$ .



(a)



(b)

**Figure S4.** MIR spectra for the TLB-THEDES made for 9 weeks (once a week) to study its stability at 40°C **(a)** spectral range between 4000  $\text{cm}^{-1}$  and 1800  $\text{cm}^{-1}$ ; **(b)** spectral range between 1800  $\text{cm}^{-1}$  and 600  $\text{cm}^{-1}$ .