

# Soloxolone Methyl Reduces the Stimulatory Effect of Leptin on the Aggressive Phenotype of Murine Neuro2a Neuroblastoma Cells via the MAPK/ERK1/2 Pathway

Kirill V. Odarenko <sup>1</sup>, Oksana V. Salomatina <sup>1,2</sup>, Ivan V. Chernikov <sup>1</sup>, Nariman F. Salakhutdinov <sup>2</sup>, Marina A. Zenkova <sup>1</sup> and Andrey V. Markov <sup>1,\*</sup>

<sup>1</sup> Institute of Chemical Biology and Fundamental Medicine, Siberian Branch of the Russian Academy of Sciences, 630090 Novosibirsk, Russia; k.odarenko@yandex.ru (K.V.O.); ana@nioch.nsc.ru (O.V.S.); chernikovivanv@gmail.com (I.V.C.); marzen@nioch.nsc.ru (M.A.Z.)

<sup>2</sup> N.N. Vorozhtsov Novosibirsk Institute of Organic Chemistry, Siberian Branch of the Russian Academy of Sciences, 630090 Novosibirsk, Russia; anvar@nioch.nsc.ru

\* Correspondence: andmrkv@gmail.com; Tel.: +7-383-363-51-61

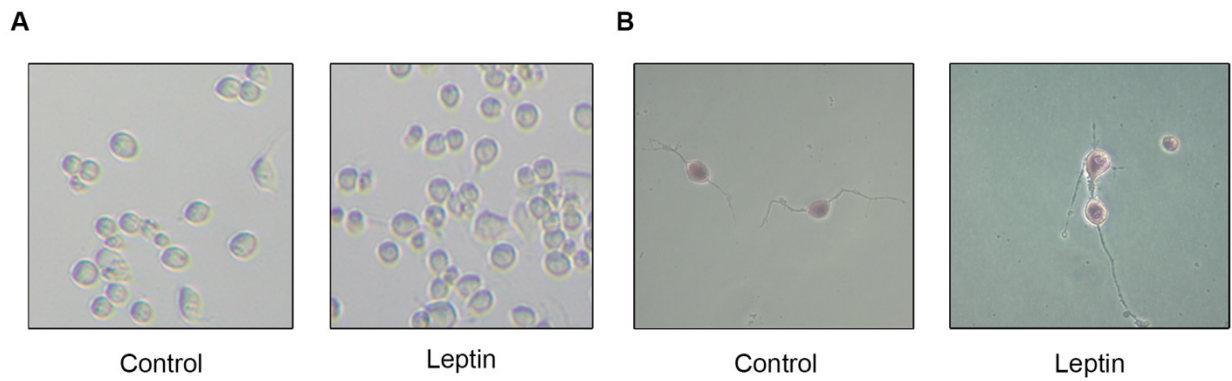
## Supplementary material

**Table S1.** The primers used in the study

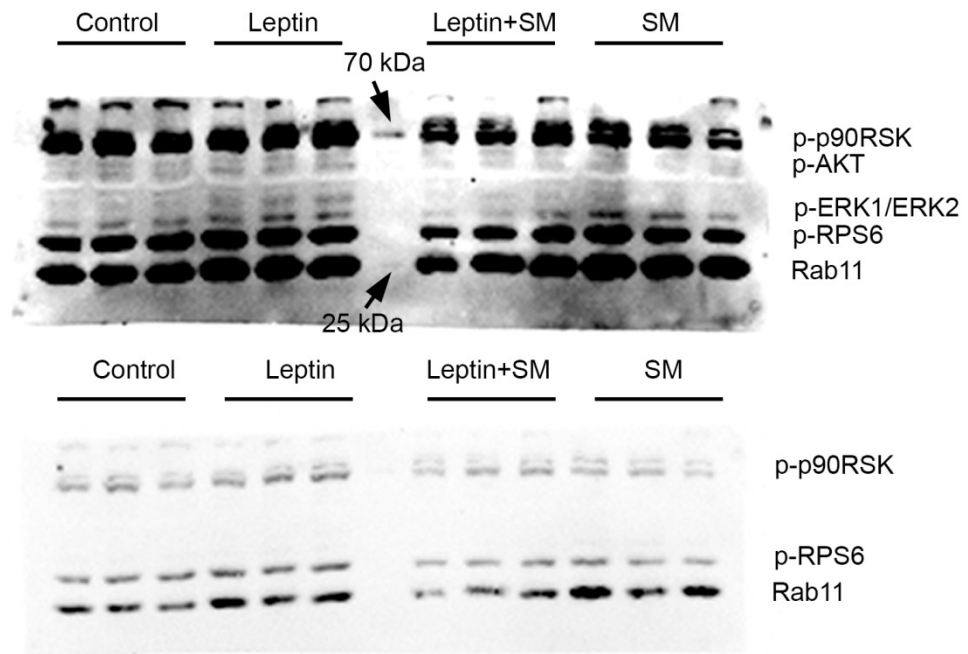
Gene	Type	Sequence
<i>Itga1</i>	Forward	5'-CTAACCAGATTGTCATCCCTC-3'
	Reverse	5'-CCAGCGATATAGAGCACATC-3'
<i>Itgb1</i>	Forward	5'-CTGGAGAATGTGAAAAGTCTTG-3'
	Reverse	5'-GGGTTGTGCTAATATACGGC-3'
<i>L1cam</i>	Forward	5'-GAGGTTTCAGGGCATCTATC-3'
	Reverse	5'-GGTTTTACAGTCTCCTTCGG-3'
<i>Ncam1</i>	Forward	5'-GACACTATCTGGTCAAGTACAG-3'
	Reverse	5'-CACATAGACTTCATACTCTGCG-3'
<i>Cdh2</i>	Forward	5'-CCTCCAGAGTTTACTGCCATG-3'
	Reverse	5'-ACCACTGATTCTGTATGCCG-3'
<i>Vim</i>	Forward	5'-CTCCTACGATTCACAGCCAC-3'
	Reverse	5'-GAGCCACCGAACATCCTG-3'
<i>Gapdh</i>	Forward	5'-AAGAGAGGCCCTATCCCAAC-3'
	Reverse	5'-GCAGCGAACTTTATTGATGG-3'

**Table S2.** The parameters of the molecular docking simulations.

Protein target	PDB ID	Grid box					
		Coordinates			Size		
		x	y	z	x	y	z
JAK2	6VGL	24.400	13.420	53.879	14	18	16
SHP-2	7JVM	20.068	-23.098	27.019	16	10	16
SOS	4NYI	37.466	30.416	22.908	16	14	12
H-RAS	6ZJO	-21.211	40.151	23.363	14	14	14
c-Raf	3OMV	6.360	16.358	33.441	14	18	14
MEK1	7JUR	-55.347	76.653	12.309	16	22	16
ERK2	1TVO	6.416	-4.156	16.954	14	16	14



**Figure S1.** Evaluation of Neuro2a cell morphology after 48-h incubation with leptin (400 ng/ml). (A) Cell size was assessed at  $\times 100$  magnification. (B) Neuritogenesis was visualized after crystal violet staining.  $\times 100$  magnification.



**Figure S2.** Levels of phosphorylated p90RSK and ERK1/ERK2 in leptin-stimulated Neuro2a cells treated with SM. Neuro2a cells were induced with SM (0.1  $\mu$ M) for 1 hour and then treated with leptin (400 ng/ml) for 30 minutes. The top and bottom images represent the same blot exposed for a longer and shorter time, respectively.